



LOT 1



LOT 46

GENETIC ADVANTAGE SALE  
 THE GENETIC ADVANTAGE SALE THE GENETIC  
 THE GENETIC ADVANTAGE SALE THE GENETIC  
 GENETIC ADVANTAGE SALE THE GENETIC  
 GENETIC ADVANTAGE SALE THE GENETIC  
 GENETIC ADVANTAGE SALE THE GENETIC



*Elite Black Hereford Genetics*

**Saturday • 12 Noon (CST)**  
**Sept 19, 2015**

JM Cattle Co., Lawrenceburg, TN.



LOT 67

# THE GENETIC ADVANTAGE SALE



**Saturday • 12 Noon (CST) Sept 19, 2015**  
 JM Cattle Co., Lawrenceburg, TN.

### SCHEDULE


#### Thursday, September 17

Cattle available for viewing

#### Friday, September 18

Cattle available for viewing

5:30 pm - Futurity Open and Junior Black Hereford Show

6:30 pm - Dinner sponsored by 

#### Saturday, September 19

11 am – Lunch will be served

12 noon CST – The Genetic Advantage Sale

### AIR TRANSPORTATION

Nashville International Airport is one hour 30 minute drive to JM Cattle Co. Huntsville International Airports is one hour 20 minute drive to JM Cattle Co.

### MOTEL ACCOMMODATIONS

Richland Inn, Lawrenceburg, TN 931-762-0061

Comfort Inn - Pulaski, TN 931-424-1600

### HERD HEALTH

Cattle will be accompanied with proper health certificates for immediate shipment.

### TRUCKING

We will be happy to assist you with trucking arrangements. No free delivery on the Bulls or females.

### INSURANCE

Your purchases can be insured sale day at the clerk's desk.

### ANNOUNCEMENTS

A supplement sheet will be available sale day with up-to-date breeding and calving information. All announcements made sale day from the auction block take precedence over printed matter in the sale catalog.

### DIRECTIONS

GPS Address: 118 Powdermill Hill Rd., Lawrenceburg, TN 38464  
 From Pulaski head west on Hwy. 64 10 Miles to JM Cattle Company. From Lawrenceburg head east on Hwy. 64 to JM Cattle Co. The sale site sits on the south side of Hwy. 64 look for the big tents and signs.

### MARKETING AGENTS



Dustin N. Layton  
 (405) 464-2455 • laytond@yahoo.com  
 TFL# 5818 • TAL# 6690  
 www.laytonauction.com

### SINGLETON MARKETING SERVICE

Bobby Singleton  
 (615) 708-1034  
 bsingleton@att.net

### SALE STAFF

Dustin Layton, Auctioneer TFL# 5818, TAL# 6690..... 405-464-2455  
 Bobby Singleton, Marketing Agent ..... 615-708-1034  
 Don Birk, Special Representative ..... 417-860-8595  
 Andy Marston, Special Representative..... 785-250-4449  
 Luke Mobley, Special Representative..... 205- 270 0999  
 Dustin Hedrick, DV Auction ..... 662-574-9433  
 Jim Potts..... 931-703-7219  
 Nathan Nelson ..... 931-703-3484

### SPECIAL GUEST

Tim Tarter, ABHA President  
 Mark Smith, ABHA Vice President  
 Jim Potts, ABHA Administrator  
 Tammy Bargaen, ABHA Board Member  
 Mark Baxter, ABHA Board Member  
 Logan Hill, ABHA Board Member  
 Dirck Hoagland, ABHA Board Member  
 Thomas Wilson, ABHA Board Member

### ACKNOWLEDGEMENTS

DVM Don Malone, Pulaski Vet Clinic..... 931-363-7575  
 Wesley Klipfel, Embryologis,  
 Cottage Farm Genetics..... 731-664-7400



www.DVAuction.com • (402) 316-5460



Jeremiah & Candace Malone  
 Lawrenceburg, TN • 931-309-6805  
 email jrmalone20@gmail.com  
 www.jm-cattlecompany.com

# THE GENETIC ADVANTAGE SALE

Fellow Cattleman

On behalf of The Genetic Advantage Breeders I would like to cordially invite you to be with us on Saturday, September 19, 2015 for the Inaugural Genetic Advantage Sale, featuring Bulls and Females from some of the most respected operations in the Black Hereford Industry. We will also be hosting the first Futurity Black Hereford Show that will consist of both a junior show and open show that will begin at 5:30 pm CST on Friday, September 18, 2015. David Burns from Pikeville, TN will be the judge of this Inaugural Event. Cash prizes and sale credits will be awarded to the winners! Following this event will be hosting a social event and dinner serving CHB and all the trimmings at 6:30 pm CST. Times have never been better in the Beef Business and more importantly in the Black Hereford Business!

We feel we have assembled an elite set of genetics for your appraisal. This offering of Black Hereford bulls and females not only excel numerically but also phenotypically. If you like females that are sound in structure, easy keeping, big ribbed, stout, highly fertile and ultra feminine fronted this set of females is your kind. The bull offering consists of stout made, big bodied, big scrotal high performance bulls with many of the bulls being both Homozygous Black and Homozygous Polled.

I would like to personally thank all the programs that joined this venture to begin The Genetic Advantage Sale: Triple C Black Herefords, R&R Farms, Smith Black Herefords, Crescent Hill Black Herefords, Triple T Farms, Woolfolk Farms and JO Bulls. All the breeders listed above along with us, JM Cattle Co., have stepped up to the plate offering only our best genetics to expand the gene pool for Black Hereford seed stock. We feel we have done our due diligence and are anxiously waiting your appraisal of our respected Black Hereford operations.

In advance I would like to personally thank you for taking time out of your busy schedules to view and appraise the offering in the Inaugural Genetic Advantage Sale. If you have any questions do not hesitate to call any of The Genetic Advantage Breeders, the sale management team or myself as we would be more than happy to answer any of your questions. We look forward to seeing you at the Futurity Black Hereford Show and dinner social on Friday, September 18, 2015 and for the Inaugural Genetic Advantage Sale at 12 noon CST on Saturday, September 19, 2015.

Sincerely yours

Jeremiah & Candace Malone  
JM Cattle Company

118 Powdermill Hill Rd. Lawrenceburg, TN 38464 931-309-6805 jrmalone20@gmail.com



# THE GENETIC ADVANTAGE SALE

## SALE INDEX

	Pages
Fall Bred Heifer.....	2
Fall Yearling Open Heifers .....	3-9
Fall Breds .....	10
Elite Spring Open Heifers .....	11-12
Spring Bred Heifers.....	13-17
Spring Splits.....	18
Spring Bred Cows .....	19
Hereford Fall Bred Cows .....	20-21
Hereford Spring Pairs and Spring Breds .....	22-23
Bulls .....	24-27
Commercial Spring Bred Heifers ...	28

## CONSIGNORS



Jeremiah & Candace Malone  
Lawrenceburg, TN • 931-309-6805  
email jrmalone20@gmail.com  
www.jm-cattlecompany.com



Richard & Ruth Kelley  
Arab, Alabama 35016  
256-586-4446  
rrkblackhereford@gmail.com



Marc, Brenda, Jacob, and Jenna Smith  
7525 N. 19th Ave. West, Newton, Iowa 50208  
641-791-9438, Cell: 641-521-0797



Tim Tarter  
2616 Hwy 1664, Nancy, KY 42544  
ph: 606-305-2289  
fax: 606-871-7975  
ngsstriper@hotmail.com



Chad and Kaitlin Jones  
35863 Crescent Hill Rd, Osawatomie, KS  
913-731-3428  
www.crescenthillblackherefords.com  
email: crescenthillblackherefords@gmail.com



Charles Crow  
105 River Park Road, Florence, AL 35634  
Home: 256-757-8848 • Cell: 256-710-3594  
chcrow@comcast.net



131 Hallie Anderson Rd, Jackson, TN 38305  
Scott: 731-571-7399 • John: 731-225-2620  
woolfolkfarms@yahoo.com



BLACK HEREFORDS  
Brock Johansen  
PO Box 706  
Castle Dale, Utah 84513  
435-381-5785  
bjohansen@emerytel.com

# THE GENETIC ADVANTAGE SALE



Lot 1 - JM Cattle Lady A301

**1**

## JM CATTLE LADY A301

BD: 9-16-2013 Cow HB004954 Tattoo: A301 80% HB

WR Curve Bender 8616 HB000830	JN Balder 6449	Feltons 615	Act BW 45		
	JN Baldee 616	JN Baldee 449 Feltons Performer 572 JN Baldee 133		Adj WW 487	
Iron Lady 124T HB003002	JN Balder 6432	JN Balder 4008	Adj YW 821		
	G Bar G 502	JN Baldee 432 JN Balder 3136 K-K 147H Gwen M82			
	BW	VW	Milk	M&G	YW
	+2.4	+29	+16	+30	+61

★ **Homozygous Black and HOMOzygous Polled**



Loewen C&L 33N Apollo A42 ET  
Reference Sire A and Service Sire on Lot 1.

- ★ Consigned by JM Cattle Company
- ★ A direct daughter of our immortal donor 124T who stemmed from the Iron Lake Ranch program in Athens, TX! A calving-ease female with true performance and style! A301 had an actual BW of 45 lbs. and an adjusted YW of 821 lbs.
- ★ If you like females with tremendous depth of rib, super correct in their lines, square hipped and ultra feminine in their make and design this future donor is your female. A301 is a beef cow in every aspect and is ready to make an impact in your herd!
- ★ PE from 11/27/14 to 2/1/15 to Loewen C&L 33N Apollo A42 ET. Checked Safe.



Lot 2A - JM Cat Dynasty 124T 452ET

**2A JM CAT DYNASTY MS 124T 452ET**

BD: 9-13-2014 Cow HB006684 Tattoo: 452ET 75% HB

Act BW	Adj WW	Adj YW
80	592	

★ *Homozygous Black and Homozygous Polled*

**2B JM CAT DYNASTY MS 124T 472ET**

BD: 12-8-2014 Cow HB006683 Tattoo: 472ET 75% HB

BCKST Black Dynasty HB0003405	JN Balder 9405	JN Balder 6449	Act BW 79
	JN Baldee 913	JN Baldee 405	
Iron Lady 124T HB003002	JN Balder 6432	JN Balder 1905	Adj YW
	G Bar G 502	JN Baldee 005	
		JN Balder 4008	
		JN Baldee 432	
		JN Balder 3136	
		K-K 147H Gwen M82	

BW	WW	Milk	M&G	YW
+2.8	+34	+15	+32	+70



Reference Dam of Lots 1, 2A & 2B - Iron Lady 124T

★ *Homozygous Black and Homozygous Polled*

- ★ Consigned by JM Cattle Company
- ★ Two full sibs sired by the ever-popular Black Dynasty and out of the immortal donor 124T. This pair of sisters could possibly be the best offspring of Black Dynasty we have seen to date. We were not able to get a picture of 472B as she was raised in a calf raiser program offsite of the farm.
- ★ Both females display a super feminine look like their dam and have tremendous depth and dimension with added muscle. What a choice it will be deciding between the two genetic gems. Females of this stature are the kind that will put your program on the map!
- ★ Both Sell Open.

# THE GENETIC ADVANTAGE SALE



Lot 3 - JM Cattle Miss X51 1217 464

## 3 JM CATTLE MISS X51 1217 464

BD: 10-24-2014 Cow HB006769 Tattoo: 464 Purebred

MSU TCF Revolution 4R Feltons Legend 242  
**KCF Bennett Revolution X51** MSU TCF Rachael ET 54N  
**P43081556** KCF Miss Proficient U201 EFBEEF Schu-lar Proficient N093  
 KCF Miss L82

JN Balder 8622 JN Balder 6449  
 HB003363 JN Baldee 535 JN Baldee 622  
 JN Baldee 049 Feltons Langworth 249

Act BW	65
Adj WW	541
Adj YW	

BW	WW	Milk	M&G	YW
+2.6	+56	+20	+48	+86

- ★ Consigned by JM Cattle Company
- ★ Sired by the ever-poplar X51 this female is something to see in person. She has the highest WW EPD of 56 and YW EPD of 86 of any Purebred Black Herford selling!
- ★ If you need to add performance and style to your cow base I would take a good look right here. She has her whole productive life in front of her and will only increase in value once she hits production. Future donor alert!
- ★ **Sells Open.**

## 4 3C'S LADDY VALLIS B22

BD: 10-16-2014 Cow HB006757 Tattoo: B22 84% HB

JN Balder 6314 JN Balder 2903  
**TBH Vallis** JN Baldee 314  
**HB003290** LPH Vivian 0604 DRF Victor S97 781  
 LPH Vintage Knight 938

JN Balder 7487 Feltons 620  
**JRK 451 Ms Brock Homebru 233** JN Baldee 487  
**HX001433** JRK Home Bru 451 KPH Homefront 0261  
 JRK 906 Corina Bru 13L

Act BW	78
Adj WW	502
Adj YW	

BW	WW	Milk	M&G	YW
+2.0	+35	+15	+33	+53

- ★ Consigned by Triple C Black Herefords
- ★ A high percentage female that is built solid from the ground up and is backed by a solid EPD profile.
- ★ **Sells Open.**

## 5 3C'S LADY VALLIS B24

BD: 10-27-2014 Cow HB006759 Tattoo: B24 Purebred

**TBH Vallis** JN Balder 6314 JN Balder 2903  
**HB003290** LPH Vivian 0604 JN Baldee 314  
 DRF Victor S97 781  
 LPH Vintage Knight 938

LPH Ambrose 0429 LPH Precious 0023  
**LPH Vada 0843** LPH Amber 0207  
**P42893689** LPH Vivian 0604 DRF Victor S97 781  
 LPH Vintage Knight 938

Act BW	88
Adj WW	475
Adj YW	

BW	WW	Milk	M&G	YW
+2.2	+35	+14	+32	+55

- ★ Consigned by Triple C Black Herefords
- ★ Here lies an opportunity to acquire a high quality sound purebred female who will be a great performer for years to come.
- ★ **Sells Open.**

## 6 3C'S LADY VALLIS B31

BD: 11-3-2014 Cow HB006760 Tattoo: B31 Purebred

JN Balder 6314 JN Balder 2903  
**TBH Vallis** JN Baldee 314  
**HB003290** LPH Vivian 0604 DRF Victor S97 781  
 LPH Vintage Knight 938

LPH Ambrose 0429 LPH Precious 0023  
**LPH Louisa 0617** LPH Amber 0207  
**P42692371** LPH Lulu 0617 DRF Victor S97 781  
 LPH Ravena 997

Act BW	83
Adj WW	487
Adj YW	

BW	WW	Milk	M&G	YW
+2.4	+36	+15	+34	+59

- ★ Consigned by Triple C Black Herefords
- ★ This female is built right from the ground up! Posted a BW ratio of 94 and is solid across the board on her EPD profile.
- ★ **Sells Open.**

**Lot 7 - RR Miss Demand R84B**



**Lot 8 - R&R Miss Moon**

**7**

**RR MISS DEMAND R84B**

BD: 6-1-2014 Cow HB006364 Tattoo: R84B 83% HB

WR Curve Bender 8616 JN Balder 6449  
**R&R Hat Band 012** JN Baldee 616  
 HB003551 RR Vickie U8 Tyler Supreme 322  
 SPH Vic 5050 P17

Act BW	81
Adj WW	557
Adj YW	

Destin On Demand 122L F114 ET Remitall Online 122L  
**JWR 155P Miss Demand 057X ET** CES Vicky 776 P70  
 43125345 JWR L408 Princess 155P PW Victor Boomer P606  
 LPH Victoria L007 L-408

BW	WW	Milk	M&G	YW
+2.4	+28	+15	+29	+50

- ★ Consigned by R&R Black Hereford Farm
- ★ Polled
- ★ Check out the profile on this high percentage young female. R84B puts everything together in a very attractive package and will be an asset to anyone's program. Grab onto this young set of highly attractive royal bred females to push your program to the next level.
- ★ **Sells Open.**

**8**

**R&R MISS MOON**

BD: 8-23-2014 Cow HB006763 Tattoo: R92B 78% HB

JN Balder 9405 JN Balder 6449  
**BCKST Black Dynasty Z420 ET** JN Baldee 405  
 HB003405 JN Baldee 913 JN Balder 1905  
 JN Baldee 005

Act BW	65
Adj WW	539
Adj YW	

JN Balder 7334 JN Balder 4130  
**R & R Phillis** JN Baldee 334  
 HB002321 SPH Victra 1001 T9 DRF P70 Vic P88 1001  
 SPH Ms Nancy K11

BW	WW	Milk	M&G	YW
+2.4	+26	+14	+27	+60

- ★ Consigned by R&R Black Hereford Farm
- ★ **Homozygous Black and Homozygous Polled**
- ★ A high percentage female that is built solid from the ground up and is backed by a solid EPD profile.
- ★ **Sells Open.**

**9**

**R&R VICTOR LADY**

BD: 11-19-2014 Cow HB006768 Tattoo: R09B 84% HB

JN Balder 4130 Feltons Langworth 249  
**JN Balder 7334** JN Baldee 130  
 HB000557 JN Baldee 334 BJH Balder 7504  
 JN Baldee 005

Act BW	81
Adj WW	545
Adj YW	

DRF P70 Vic P88 1001 CES Victor M90 P88  
**SPH Victra 1001 T5** CES Vicky 776 P70  
 P42926927 CES Krissy S19 U140 CES HRP Victor 103T S19  
 CES Victoria M90 P17

BW	WW	Milk	M&G	YW
+3.1	+28	+15	+29	+52

- ★ Consigned by R&R Black Hereford Farm
- ★ Polled
- ★ Check out the age just a November! This will be one of the younger females in her particular age division but does not sacrifice quality anywhere as she is super correct in her lines, goggle-eyed and will be one whale of a productive cow.
- ★ **Sells Open.**

**10**

**3C'S CLASSIC SMITH LADY B12**

BD: 9-3-2014 Cow HB005917 Tattoo: B12 Purebred

Bar Z Balder 680 Bar Z Balder 5  
**JO Bull Classic Smith 2008** Bar Z Battle 180  
 HB003736 JO Miss Curve Fork 0008 WR Curve Bender 8616  
 C 176 Devo Lass 47

Act BW	67
Adj WW	378
Adj YW	

LPH Ambrose 0429 LPH Precious 0023  
**TPH Voncile 0901** LPH Amber 0207  
 P43124442 LPH Vivian 0604 DRF Victor S97 781  
 LPH Vintage Knight 938

BW	WW	Milk	M&G	YW
+1.1	+25	+15	+28	+56

- ★ Consigned by Triple C Black Herefords
- ★ Polled
- ★ B12 posted a BW ratio of 89 and has a low BW EPD of 1.1. A purebred that will make a solid foundation female.
- ★ **Sells Open.**

# THE GENETIC ADVANTAGE SALE

★ You talk about a brood cow in the making check out this high percentage direct daughter of Black Dynasty who is certainly leaving his mark in the breed. B18 is long made, big barreled, big topped, very correct in her lines and ultra cool fronted. This female is a donor in the making just imagine her in production!

★ **Sells Open.**



**BCKST Black Dynasty Z420 ET**  
Reference Sire



**Lot 11 - 3C's Dynasty Lady B18**

**11**

## 3C'S DYNASTY LADY B18

BD: 9-13-2014 Cow HB005920 Tattoo: B18 86% HB

BCKST Black Dynasty HB0003405	JN Balder 9405	JN Balder 6449	Act BW 77		
	JN Baldee 913	JN Baldee 005			
LPH Britney 0827 P42893697	LPH Ambrose 0429	LPH Precious 0023	Adj WW 479		
	LPH Bella 0631	LPH Amber 0207 DRF Victor S97 781 LPH Belinda 9814	Adj YW		
	<b>BW</b>	<b>WW</b>	<b>Milk</b>	<b>M&amp;G</b>	<b>YW</b>
	+2.4	+32	+15	+31	+65

★ Consigned by Triple C Black Herefords  
★ Polled

**12**

## 3C'S DYNASTY LADY B14

BD: 9-9-2014 Cow HB005918 Tattoo: B14 82% HB

BCKST Black Dynasty HB0003405	JN Balder 9405	JN Balder 6449	Act BW 72		
	JN Baldee 913	JN Baldee 005			
Iron Lady 033 LK HB002012	JN Balder 8615	JN Balder 6000	Adj WW 443		
	Iron Lady 808	JN Baldee 615 KCF Bennett 774 R413 Churchill Lady 618S	Adj YW		
	<b>BW</b>	<b>WW</b>	<b>Milk</b>	<b>M&amp;G</b>	<b>YW</b>
	+2.6	+23	+14	+26	+51

★ Consigned by Triple C Black Herefords  
★ Polled



**Lot 12 - 3C's Dynasty Lady B14**

★ What a sampling of Black Dynasty genetics we have for you to evaluate in the Genetic Advantage Sale. B14's dam stems from a high quality Iron Lake Ranch bred female. This high percentage female is built right from the ground up and has that extra eye-appeal we all seek in our seed stock. If you are looking for females that will only increase with value as they come into production take a hard look at this division of cattle.

★ **Sells Open.**



- ★ I do not know if you could draw a picture of a brood cow in the making any better than R87. Just analyze the volume and capacity she exhibits through the middle portion of her body. Folks she is only 11 months old in this picture! Look at her picture perfect udder development as far as spacing and size of tits, she is going to be a milking machine. Sound as a cat and super correct in her lines this female is a flat out beast! If an operation only had a pasture full of females that looked like her they would be in the driver seat.
- ★ Her sire R117 is the paternal grand sire of C Miles McKee the \$600,000 world record setting Hereford bull.
- ★ R87's maternal sister sell as lot 47.
- ★ **Sells Open.**



Lot 13 - R&R M326 Miss Ribeye

**13** **R&R M326 MISS RIBEYE**

BD: 8-10-2014 Cow NR/2714 Tattoo: R87B 50% HB

<b>SHF Rib Eye M326 R117</b> P42584003	KCF Bennett 3008 M326	RRH Mr Felt 3008	Act BW 72			
	HVH Miss Hudson 83K 8M	KCF Miss 459 F284 MSU MF Hudson 19H Sun Vindy Miss 83K				
<b>SBP Blackcap 7237</b> 15862409	GAR Retail Product	GAR Precision 1680	Adj WW 550			
	Riverbend Blackcap R616	GAR EXT 4927 G A R Integrity A Plus Blackcap 2006	Adj YW			
		<b>BW</b>	<b>WW</b>	<b>Milk</b>	<b>M&amp;G</b>	<b>YW</b>
		+1.0	+45	+25	+47	+77

- ★ Consigned by R&R Black Hereford Farm
- ★ Polled

**14** **R&R M326 MISS RIBEYE GIRL**

BD: 11-4-2014 Cow NR/2722 Tattoo: R08B 50% HB

<b>SHF Rib Eye M326 R117</b> P42584003	KCF Bennett 3008	RRH Mr Felt 3008	Act BW 77			
	HVH Miss Hudson 83K 8M	KCF Miss 459 F284 MSU MF Hudson 19H Sun Vindy Miss 83K				
<b>TRM Rita 080</b> 16860127	B C Lookout 7024	O C C Legend 616L	Adj WW 594			
	15942236	Gibbet Hill Mignonne E37 S A V 8180 Traveler 004 GAR Precision G313	Adj YW			
		<b>BW</b>	<b>WW</b>	<b>Milk</b>	<b>M&amp;G</b>	<b>YW</b>
		+1.9	+49	+23	+47	+82

- ★ Consigned by R&R Black Hereford Farm
- ★ Polled



Lot 14 - R&R M326 Miss Ribeye Girl

- ★ A paternal sister to lot 13 and may be just as good, just 3 months younger in age. Only 8 months of age at picture time and you can already see the bell shape she displays through her underline. Maybe a nickel longer necked and tad bigger boned than her sister but that is cutting hairs. Here lies two tremendous individuals and I do not know where you could go anywhere in America and find any better made with the genetics they have. This is truly a buyers opportunity as the Genetic Advantage breeders have stacked the gene pool full!
- ★ **Sells Open.**

# THE GENETIC ADVANTAGE SALE



Lot 15 - R&R Miss Safeguard

## 15 R&R MISS SAFEGUARD

BD: 8-26-2014 Cow NR/2716 Tattoo: R94B 50% HB

PA Safeguard 021 16772185	GAR New Design PA Lorna Marshall 2905-730	B/R New Design 036 GAR Precision 706 Woodhill Foresight Petes 2905 Dateline Marshall	Act BW 72
CES Nicole 148R ET P43251455	Westwind JWR Tundra 148R CMR Cindy P606 148N ET	TH JWR SOP 16G 57G Tundra 63N CES Victoria 4009 B64 PW Victor Boomer P606 GV P183 Nicole 9113	Adj WW 510 Adj YW

BW	WW	Milk	M&G	YW
+2.8	+52	+23	+49	+52

- ★ Consigned by R&R Black Hereford Farm
- ★ Polled
- ★ If you like your females super stout and attractive you will love 94B. Just look at the power and dimension she displays throughout her hip and down her top line. If it is hard to create a beast this powerful yet still feminine fronted. This female is a "power cow" in the making! We will hear more from this female in the future!
- ★ **Sells Open.**

## 16 R&R ABSOLUTE LINDSEY

BD: 8-17-2014 Cow NR/2715 Tattoo: R91B 50% HB

KCF Bennett Absolute 164310795	S A V Final Answer 0035 Thomas Miss Lucy 5152	Sitz Traveler 8180 S A V Emulous 8145 Wuffs EXT 6106 Thomas Miss Lucy 3050	Act BW 70
JWR 070T Lindsey 060X P43115838	JWR L56 Round Up 071R ET JWR B64 Marlene 070T	NJW 57G 712B Cowtown 60M SB P416 Liberty Belle L56 JWR P416 Marshall L57 CES Victoria 4009 B64	Adj WW 588 Adj YW

BW	WW	Milk	M&G	YW
+1.3	+65	+26	+58	+110

- ★ Consigned by R&R Black Hereford Farm
- ★ Polled
- ★ Her sire KCF Bennett Absolute is one of the most heavily used bulls in the Angus breed today. Semen is and has been on back order since the beginning of the year. R91B not only has the biggest spread for BW to YW in the offering but also has the highest WW and YW EPD of the entire sale offering. If you want proven predictable genetics with added performance take a good look right here.
- ★ **Sells Open.**

## 17 R&R MISS LIBERTY

BD: 9-21-2014 Cow NR/2719 Tattoo: R02B 50% HB

Syngen Liberty GA 8627 16214558	Connealy Forward Syngen Blackbird FA 051	Connealy Onward Becky Loo Of Conanga 74 EXAR New Look 2971 SAF Blackbird 6028	Act BW 75
TRM 7220 Lidea 9084 P43064014	RRO TRM 2250 Limestone 6122 TRM Ms Tomorrow 7220	TRM HV 334 High Energy 3228 RRO TRM Vivian 2250 RRO TRM Ta-Dah-Boom 4267 TRM Fay 0109	Adj WW 610 Adj YW

BW	WW	Milk	M&G	YW
+1.6	+54	+28	+55	+90

- ★ Consigned by R&R Black Hereford Farm
- ★ Polled
- ★ The dam of R02B is a powerfully designed female that originated in the TRM program in Fort Payne, AL. She will make a tremendous brood cow prospect with the hip and body she displays. Loaded with performance and is a big spread female.
- ★ **Sells Open.**



KCF Bennett Absolute

**18****R&R THUNDER GIRL**

BD: 9-12-2014 Cow NR/2718 Tattoo: R99B 50% HB

**Connealy Thunder**  
15148659

Baldrige Kaboom K243 KCF  
Parka of Conanga 241

Jauer 353 Traveler 589 27  
Pleasant of Conanga 736  
Bon View Bando 598  
Partina of Conanga 6237

**CES Jaime 145R J2 ET**  
P43095787

Grandview 70Oaks Sonora 145R  
CES Jaime Z52 C267

Remital Online 122L  
DJB 46B Beth 1L  
CES SLF Victor 964 Z52  
DRF Victoria 218 5094

Act BW
64
Adj WW
534
Adj YW

BW	WW	Milk	M&G	YW
+1.3	+20	+13	+23	+34

- ★ Consigned by R&R Black Hereford Farm
- ★ Polled
- ★ Dam is a direct daughter of Sonora who is a direct descendant of Online 122L and Beth 1L, the full sister to P606, two of the most influential genetic lines in the Herford breed over the past 15 years. Goggle eyed, big bodied and super feminine fronted this female will be one to watch out for.
- ★ **Sells Open.**



Lot 18 - R&amp;R Thunder Girl

**19****R&R MOLER ET THUNDER**

BD: 10-6-2014 Cow NR/2721 Tattoo: R06B 50% HB

**Connealy Thunder**  
15148659

Baldrige Kaboom K243 KCF  
Parka of Conanga 241

Jauer 353 Traveler 589 27  
Pleasant of Conanga 736  
Bon View Bando 598  
Partina of Conanga 6237

**JWR 155P Miss Molly 055X ET**  
43115898

BR Moler ET  
JWR L408 Princess 155P

Remital Online 122L  
DM L1 Dominette 820  
PW Victor Boomer P606  
LPH Victoria L007 L-408

Act BW
71
Adj WW
582
Adj YW

BW	WW	Milk	M&G	YW
+1.8	+50	+25	+50	+88

- ★ Consigned by R&R Black Hereford Farm
- ★ Polled
- ★ Powerful genetic package with brood cow prospect written all over her. If you want to build a heard around a solid set of foundation females take a hard look at this set of paternal sisters. Don't overlook her EPD profile!
- ★ **Sells Open.**



Lot 19 - R&amp;R Moller ET Thunder

**DONATION HEIFER****20****R&R THUNDER VICKIE**

BD: 10-6-2014 Cow NR/2720 Tattoo: R03B 50% HB

**Connealy Thunder**  
15148659

Baldrige Kaboom K243 KCF  
Parka of Conanga 241

Jauer 353 Traveler 589 27  
Pleasant of Conanga 736  
Bon View Bando 598  
Partina of Conanga 6237

**SPH Victra 390 T14**  
P42926930

CES Victor 4009 B390 ET  
SPH Vicki Will-Via Max M7

HRP Victor 72A 4009  
CES Betsy 103T S8  
Will-Via CCC Max  
CMF 7A Vicki 444H

Act BW
74
Adj WW
470
Adj YW

BW	WW	Milk	M&G	YW
+0.4	+40	+23	+43	+74

- ★ Polled
- ★ The Dynasty Group and JM Cattle are donating all the proceeds from this female to the ABHA.
- ★ **Sells Open.**



Lot 20 - R&amp;R Thunder Vickie

# THE GENETIC ADVANTAGE SALE

Lot 21 - JN Baldee 1218



Lot 22 - JM Cattle Gus Miss A302

**21**

## JN BALDEE 1218

BD: 2-26-2012 Cow HB003206 Tattoo: 1218 62% HB

JN Balder 1905 JN Balder 7130 HB000560	JN Baldee 130	Feltons Langworth 249 JN Baldee 905 Finks 7243 M Of 4131 6148 JN Dominette 417 4 ET	Act BW 64 Adj WW 546 Adj YW
JN Balder 1905 JN Baldee 1006 HB001854	JN Baldee 483	Feltons Langworth 249 JN Baldee 905 JAK Double Take L417 JAK L1 Dominette K173	

BW	WW	Milk	M&G	YW
+0.6	+36	+11	+30	+72

- ★ Consigned by JM Cattle Company
- ★ **Homozygous Black**
- ★ Polled
- ★ A young powerfully designed bred female with extra rib and dimension with added stoutness. JM Cattle is retaining her first heifer calf in the herd otherwise we would not be selling her. The heifer calf in her belly will be homozygous black just like momma.
- ★ PE from 11/27/14 to 2/1/14 to JO Bull Advantage JN Y413. Ultrasound safe with a heifer calf. Estimated due date is 11/16/15.

**22**

## JM CATTLE GUS MISS A302

BD: 10-10-2013 Cow HB005470 Tattoo: A302 Purebred

JN Balder 9622 HB001269	JN Balder 6449 JN Baldee 622	Feltons 615 JN Baldee 449 Feltons 613 JN Baldee 237	Act BW 95 Adj WW 547 Adj YW 878
J-B Story Online 122 P43190466	DCC 122L Life6270 ET X0112 AHR Story Online T3	Remital Online 122L Hanson 94K Lassie 3106 BR Key Online 3026 AHR Victoria 31E]	

BW	WW	Milk	M&G	YW
+4.4	+33	+16	+33	+56

- ★ Consigned by JM Cattle Company
- ★ Polled
- ★ A302's dam, a double-bred Online daughter on the maternal side, has one of the most beautiful udders in the JM Cattle herd. Don't miss out on the opportunity to acquire these high percentage females.
- ★ AI on 11/20/14 to JM Cattle Resolve A746.
- ★ PE from 11/27/14 to 12/31/14 to JM Cattle Resolve A746.

**23**

## JM CATTLE 8622 MISS 263

BD: 9-5-2013 Cow HB005469 Tattoo: 263 73% HB

JN Balder 8622 HB000813	JN Balder 6449 JN Baldee 622	Feltons 615 JN Baldee 449 Feltons 613 JN Baldee 237	Act BW 97 Adj WW 448 Adj YW 876
JN Baldee 918 HB001236	JN Balder 6038 JN Baldee 475	Feltons Performer 572 JN Baldee 038 E E 394 HY Trend 819 EE Ms 5102 L1 0108	

BW	WW	Milk	M&G	YW
+5.2	+45	+17	+40	+64

- ★ Consigned by JM Cattle Company
- ★ **Homozygous Black**
- ★ Polled
- ★ A natural calf out of the 918 donor that is co-owned with Triple T Farms. Maternal bothers sell as lots 68 and 69. Young and good!
- ★ AI on 11/20/14 to Loewen C&L 33N Apollo A42 ET. Checked Safe AI.
- ★ PE from 11/27/14 to 12/31/14 to Loewen C&L 33N Apollo A42 ET.

**24**

## RR MISS FOCUS R38A

BD: 2-27-2013 Cow NR/2392 Tattoo: R38A 50% HX

SAF Focus of E R 12618076	S A F Fame G D A R Forever Lady 246	Minerts Fortune 2000 S A F Royal Lass 1027 Transformer 100 E A R G D A R Forever Lady 718	Act BW 74 Adj WW 448 Adj YW 876
CE Victoria F74 P43095487	Destin Solute 446 F74 CES My Way 157H F236	WALKERFBCES]LOBrace118EP70446E JLO Brooklyn 122L C137 Remital Highway ET 157H MHF CEF Victoria 218 A24 ET	

BW	WW	Milk	M&G	YW

- ★ Consigned by R&R Black Hereford Farm
- ★ Polled
- ★ Sired by the legendary Focus of ER and is deep bodied and super attractive. A maternal sister sold in The Black is The Color Sale commanding \$6,500. R38A is just as good or maybe even better!
- ★ Checked safe AI to JN Balder 9622 (Gus) and will calve before sale day.

**25****JM WF MS RODEO 1624**

BD: 1-15-2015 Cow HB006779 Tattoo: 1624 75% HB

THM Sleep Easy 3060	NJB 218 Easy Domino ET	Act BW 65
THM 3060 Rodeo 7478	THM 8045 Victra Dom 1092	
P42819934 THM TL's Heidyeta 4050	Star 8006 Enyeto 163M ET	Adj WW 651
	THM TL's Heidi 2017	Adj YW
Deer Valley All Around 9393	Connealy All Around	
WF MS Victoria 90F 1278	Werner Forever Lady 1866	
NR/2723 WF MS Victor 8036 688	THM Victor Dom 8036	
	WF Victoria 90F	

BW	WW	Milk	M&G	YW
+2.8	+59	+20	+49	+92

- ★ Consigned by JM Cattle Company and Wolfolk Farms
- ★ Polled
- ★ Big hiped with body and power! This direct daughter of Rodeo 7478 is loaded with performance and eye-appeal. Check out the Adj. WW of 651 lbs!
- ★ **Sells Open.**



Lot 25 - JM WF Ms Rodeo 1624

**26****JM CATTLE MISS MONEY 692 510**

BD: 2-11-2015 Cow HB006697 Tattoo: 510 Purebred

JN Balder 8622	JN Balder 6449	Act BW 80
JO Money Train JN Z928	JN Baldee 622	
HB003398 JN Baldee 928	JN Balder 7130	Adj WW
	JN Baldee 719	Adj YW
HR Revolution 4159	MSU TCF Revolution 4R	
R Miss Revolution 692	HR Miss Wrangler 3167	
P43307399 R Miss Domino 3015	OXH Domino 1095	
	R Miss Domino 3015	

BW	WW	Milk	M&G	YW
+4.0	+47	+19	+43	+80

- ★ Consigned by JM Cattle Company
- ★ Polled
- ★ Dam is a descendant of Revolution 4R who has been one of the most heavily used bulls in the Hereford breed the past few year. This set of spring calves are young and good with a world of earning potential.
- ★ **Sells Open.**

**27****CHBH C104 OF Z071 C001**

BD: 2-3-2015 Cow HB006660 Tattoo: C001 82% HB

JN Balder Z071	JN Balder 7312	JN Balder 2903	Act BW 62
HB003274	JN Baldee 1071	JN Baldee 312	
		JN Balder 8622	Adj WW
		JN Baldee 846	Adj YW
WR Curve Bender 8616	JN Balder 6449	JN Baldee 616	
C Baldee 104	HL Red Doggie 120M	Bar B 838C Red Dog	
HB002327		HL British Lass 115	

BW	WW	Milk	M&G	YW
+3.1	+35	+15	+33	+57

- ★ Consigned by Crescent Hill Black Herefords
- ★ Polled
- ★ C001's dam has been one of the top producing and most consistent producing females in the Crescent Hill Black Hereford program the past 2 years. This female was hard for them to part with, as she not only excels genetically but phenotypically as well. Very correct in her lines and ties it all together in a very attractive feminine package. Her sire Z071 is proving to be a bull that consistently sires progeny with superior growth.
- ★ **Sells Open.**

**28****SBH MISS Q 513**

BD: 2-22-2015 Cow HB006780 Tattoo: 513 75% HB

LCC Back N Time ET	Star Bright Future 533P ET	Act BW 92
JB LCC Quagmire 506	LCC Merry Time 244	
43159300 LCC 3228 Dandy Lion 7141 ET	UPS Kootenay 3228 1ET	Adj WW
	MCR 552 Gold Markrtte 413 ET	Adj YW
Century Atlas 31	Stevevon Bruno 561G	
SBH 9112	Century Sara 226	
NR/1627 OF MS Mickinley 508R	5PH Mckinley 5K	
	OF Miss E	

BW	WW	Milk	M&G	YW
+2.8	+55	+23	+51	+89

- ★ Consigned by Smith Black Herefords
- ★ Polled
- ★ Sire by the 2011 NAILE Reserve National Champion Bull "Quagmire". This high percentage female is a product of Jacob's best producing F1 female. She will be halter broke and ready for the show ring. Jr's pay attention here!
- ★ **Sells Open.**

**29****SBH SARA 518**

BD: 3-5-2015 Cow HB006781 Tattoo: 518 70% HB

Bar Z Balder 680	Bar Z Balder 5	Act BW 66
JO Bull Classic Smith 2008	Bar Z Battle 180	
HB003736 JO Miss Curve Fork 0008	WR Curve Bender 8616	Adj WW
	C 176 Devo Lass 47	Adj YW
OF Iceberg 726T	O F Iceman 424P	
SBH F191X	O F Trackette 495P	
NR/1988 OF Dominette 5C 16K	WRI Perfect Dom 45W 5C	
	OF Eve Spec 252B	

BW	WW	Milk	M&G	YW
+0.9	+34	+17	+34	+71

- ★ Consigned by Smith Black Herefords
- ★ Polled
- ★ A super feminine smooth shouldered female with tremendous depth of rib and flank. This female will show and with her super easy disposition she is becoming one of Jenna's favorites.
- ★ **Sells Open.**

# THE GENETIC ADVANTAGE SALE

Lot 30 - JM Cattle Miss Y413 1123 507



## 30 JM CATTLE MISS Y413 1123 507

<b>30</b>	BD: 2-4-2015	Cow HB006686	Tattoo: 507	68% HB
JO Bull Advantage HB002513	JN Balder 8622	JN Balder 6449	Act BW 75	
	JN Y413	JN Baldee 622		
	JN Baldee 413	JAK 7085 CM K22	Adj WW	
		JAK MS Virginia C101		
JN Baldee 1123 HB002475	JN Balder 8079	JN Balder 4126	Adj YW	
	JN Baldee 617	JN Baldee 079		
		Feltons 613		
		JN Baldee 138		
	<b>BW</b>	<b>WW</b>	<b>Milk</b>	<b>M&amp;G</b>
	+4.2	+40	+16	+36
			<b>YW</b>	+77

- ★ Consigned by JM Cattle Company
- ★ Polled
- ★ The picture does not do this female justice as she is something to spectate in person. Her front legs are in a hole, which is not allowing her to display her self to her full potential. Huge topped and wide pinned this female really has some power. She will be competitive in the show ring but more importantly she will be a tremendous brood cow.
- ★ **Sells Open.**

## 31 JM WF MS RODEO QUEEN 1618

<b>31</b>	BD: 1-12-2015	Cow NR/2724	Tattoo: 1618	50% HB
Deer Valley All Around 16354170	Connealy All Around	Connealy Whitman	Act BW 68	
	Werner Forever Lady 1866	Entrust Of Conanga 894		
		Boyd On Target 1083	Adj WW	
		SVF Forever Lady 57D		
WF 7478 Rodeo Queen P43284798	THM 3060 Rodeo 7478	THM Sleep Easy 3060	Adj YW	
	WF MS Victor 8036 332M	THM TL's Heidyeta 4050		
		THM Victor Dom 8036		
		WF Resistol's Move 78F		
	<b>BW</b>	<b>WW</b>	<b>Milk</b>	<b>M&amp;G</b>
	+3.1	+54	+22	+49
			<b>YW</b>	+89

- ★ Consigned by JM Cattle Company and Wolfolk Farms
- ★ Polled
- ★ Ultra smooth made female with an excellent shape to her underline especially as green as she is. When this one gets pulled together with a little time she will be some kind of female. If you want a highly competitive female be sure to look up 1618 sale day!
- ★ **Sells Open.**



Lot 31 - JM WF Ms Rodeo Queen 1618



Lot 32 - 3C's R&R Bender's A18

### 32 3C'S R&R BENDER'S A18

BD: 9-27-2013 Cow HB005360 Tattoo: A18 84% HB

R&R Curve Bender C46K HB002826	WR Curve Bender 8616	JN Balder 6449	Act BW 53
	R&R My Ruth	JN Baldee 616	
TBH Nichole 0109 HB002975	JN Balder 6314	JN Balder 6442	Adj WW 492
	LPH Vivian 0604	JWS W368 Vicki S7	Adj YW 670
		JN Balder 2903	BW
		JN Baldee 314	WW
		DRF Victor S97 781	Milk
		LPH Vintage Knight 938	M&G
			YW
			+0.4
			+31
			+15
			+31
			+54

- ★ Consigned by Triple C Black Herefords
- ★ What a way to kick off the Spring Bred heifer division with this very well constructed homozygous black daughter that descends from the Curve Bender genetic line. Beautiful profile and super correct in her lines with a super calving ease EPD profile. Came into this world at a light 53 lbs. and has exploded from there.
- ★ AI on 5/12/15 to BKST Black Dynasty Z420 ET.
- ★ PE from 5/27/15 to 7/17/15 to Triple T's 114 By Ribeye ET.

### 33 SBH CLASSIC GAL 405

BD: 1-11-2014 Cow HB006014 Tattoo: 405 82% HB

JO Bull Classic Smith 2008 HB003736	Bar Z Balder 680	Bar Z Balder 5	Act BW 89
	JO Miss Curve Fork 0008	Bar Z Battle 180	
JN Baldee 647 HB001064	Feltons Performer 572	WR Curve Bender 8616	Adj WW 405
	JN Baldee 036	C 176 Devo Lass 47	Adj YW 741
		Feltons Endurance 745	BW
		Feltons B32 BMD	WW
		JN Domino 4794E 4 ET	Milk
		A V F Blackcap 9744	M&G
			YW
			+4.0
			+30
			+14
			+30
			+55

- ★ Consigned by Smith Black Herefords
- ★ Polled
- ★ This heifer stems from one of the Smith Black Herefords original JN cow families. 405 has brood cow written all over with her extra body and stoutness.
- ★ AI on 5/12/15 to Jo Money Train JN 2928.
- ★ PE from 6/1/15 to 7/15/15 to LCC 743 Straight Shooter 456. Checked Safe PE. Estimated calving date in 3/6/16.

### 34 SBH CLASSIC LIBERTY 417

BD: 3-14-2014 Cow HB006016 Tattoo: 417 70% HB

JO Bull Classic Smith 2008 HB003736	Bar Z Balder 680	Bar Z Balder 5	Act BW 91
	JO Miss Curve Fork 0008	Bar Z Battle 180	
SBH F1 135X NR/1991	OF Iceberg 726T	WR Curve Bender 8616	Adj WW 500
	OF Classy 10H 719T	C 176 Devo Lass 47	Adj YW 813
		O F Iceman 424P	BW
		O F Trackette 495P	WW
		DR World Class 517 10H	Milk
		OF MS Mckinley 511R	M&G
			YW
			+3.9
			+28
			+15
			+29
			+54

- ★ Consigned by Smith Black Herefords
- ★ Polled
- ★ The Classic sired females are a solid set of foundation females that will only increase in value. A lot of potential lies here in this young bred heifer.
- ★ AI on 4/12/15 to Jo Money Train JN Z928. Checked Safe AI.
- ★ PE from 6/1/15 to 7/15/15 to LCC 743 Straight Shooter 456.

### 35 R & R BLACK TOP R56A

BD: 8-20-2013 Cow HB006054 Tattoo: R56A 76% HB

JN Balder 0905 HB001835	JN Balder 6449	Feltons 615	Act BW 73
	JN Baldee 905	JN Baldee 449	
RR Miss Abby HB001323	JN Balder 7334	GDAR Royce 131	Adj WW 626
	SPH Vicki 390S14	JN Dominet 529	Adj YW 692
		JN Balder 4130	BW
		JN Baldee 334	WW
		CES Victor 4009 B390 ET	Milk
		SPH Miss Nancy 1001 N2	M&G
			YW
			+2.8
			+30
			+14
			+30
			+52

- ★ Consigned by R&R Black Hereford Farm
- ★ Polled
- ★ This long bodied, slick haired, black beauty is one whale of a cow prospect in the making. Combines calving-ease with exceptional growth to WW and YW.
- ★ Observed bred on 3/10/15 to JN Balder A146.

# THE GENETIC ADVANTAGE SALE

Lot 37 - 3C's Lady Thunder A23



Lot 36 - 3C's Lady Thunder A24



## 36 3C'S LADY THUNDER A24

<b>36</b>	BD: 10-7-2013	Cow HB005365	Tattoo: A24	81% HB	
<b>Triple T's Rollin Blk Thunder ET</b> HB002162	JN Balder 3049	BJH Balder 7504	<b>Act BW</b> 79		
	JN Baldee 241	JN Baldee 049			
<b>TPH Voncile 0901</b> P43124442	LPH Ambrose 0429	LPH Precious 0023	<b>Adj WW</b> 413		
	LPH Vivian 0604	LPH Amber 0207			
		DRF Victor S97 781	<b>Adj YW</b> 606		
		LPH Vintage Knight 938			
	<b>BW</b>	<b>WW</b>	<b>Milk</b>	<b>M&amp;G</b>	<b>YW</b>
	+4.9	+26	+15	+28	+53

- ★ Consigned by Triple C Black Herefords
- ★ Polled
- ★ Buy up these Black Thunder daughters they are flat out good! Look at the rib, hip, bone and femininity this young girl portrays. This is a beef cow in the making and will be something to see in production. What a set of females for your appraisal on September 19 at the Inaugural Genetic Advantage Sale.
- ★ PE from 5/12/15 to 7/17/15 to Triple T's 114 By Ribeye ET.

## 38 3C'S LADY THUNDER A20

<b>38</b>	BD: 10-3-2013	Cow HB005362	Tattoo: A20	81% HB	
<b>Triple T's Rollin Blk Thunder ET</b> HB002162	JN Balder 3049	BJH Balder 7504	<b>Act BW</b> 87		
	JN Baldee 241	JN Baldee 049			
<b>LPH Alicia 0615</b> P42692347	DRF Victor S97 781	CESDRF Victoria S19U 10ET	<b>Adj WW</b> 469		
	LPH Alice 0101	UG 517 Excitement 7221			
		LPH Alexis Knight 9611	<b>Adj YW</b> 700		
	<b>BW</b>	<b>WW</b>	<b>Milk</b>	<b>M&amp;G</b>	<b>YW</b>
	+5.7	+30	+15	+30	+64

## 37 3C'S LADY THUNDER A23

<b>37</b>	BD: 10-6-2013	Cow HB005364	Tattoo: A23	81% HB	
<b>Triple T's Rollin Blk Thunder ET</b> HB002162	JN Balder 3049	BJH Balder 7504	<b>Act BW</b> 72		
	JN Baldee 241	JN Baldee 049			
<b>LPH Leah 0823</b> P42893693	TRM K021 Sonic Boom 4180	PW Victor Boomer P606	<b>Adj WW</b> 457		
	LPH Louisa 0617	Red Hill Emily 20X K021			
		LPH Ambrose 0429	<b>Adj YW</b> 612		
		LPH Lulu 0617			
	<b>BW</b>	<b>WW</b>	<b>Milk</b>	<b>M&amp;G</b>	<b>YW</b>
	+4.2	+29	+15	+30	+50

- ★ Consigned by Triple C Black Herefords
- ★ Polled
- ★ Fancy made bred heifer that is stout! Big hipped, big topped and full of red meat and muscle yet still maintains a very feminine look. Stems from the Thunder family and is one impressive brood cow prospect.
- ★ AI on 5/12/15 to WR Casinova 0712.
- ★ PE from 5/27/15 to 7/17/15 to R&R Curve Bender C45K.

- ★ Consigned by Triple C Black Herefords
- ★ Polled
- ★ Here is an opportunity to acquire a group of Black Thunder daughters that will flat out work and get the job done. This set of females will be a great foundation to start or add to an existing herd.
- ★ PE from 5/12/15 to 7/17/15 to Triple T's 114 By Ribeye ET.



39

**JM CATTLE BLACK ROSE 407**

BD: 3-10-2014 Cow HB006203 Tattoo: 407 74% HB

Triple L Z019 ET HB003440	JN Balder 0449 JN Baldee 829	JN Balder 6000 JN Baldee 449 JN Balder 4136 JN Baldee 905	Act BW 70	
YJA Black Rose Abbie HB003643	Triple L X091 Triple L X216	JN Balder 8026 J Bar B Montys June WR Rocky 5104 WR Black Rose U144-S108	Adj WW 586	
			Adj YW	
BW	WW	Milk	M&G	YW
+3.2	+33	+13	+30	+54

- ★ Consigned by JM Cattle Company
- ★ Polled
- ★ Solid black and solid good! A very attractive female with extra length of body and is a tremendous brood cow prospect in the making.
- ★ AI on 3/17/15 to JM Cattle Resolve A746.
- ★ PE from 5/12/15 to 7/9/15 to Triple T's 114 By Ribeye ET.

40

**SBH IRON FOUNDATION 413**

BD: 2-8-2014 Cow HB005559 Tattoo: 413 67% HB

Iron Man 1016 T HB001988	JN Balder 6432 DBLH Ely S09	JN Balder 4008 JN Baldee 432 RF Harvey 1G 17) DR 651 Chella 154L ET	Act BW 82	
SBH 995W NR/1626	Century Atlas 31 OF Classy 10H 629S	Stevenson Bruno 561G Century Sara 226 DR World Class 517 10H OF Joy Trend 901J 181L	Adj WW 448	
			Adj YW 736	
BW	WW	Milk	M&G	YW
+4.1	+37	+15	+33	+67

- ★ Consigned by Smith Black Herefords
- ★ Polled
- ★ 413's sire derived from the Iron Lake Ranch program in Athens, TX and has been a solid breeding bull. This bred heifer is super cool fronted, big topped and powerfully constructed. This is one the Smith Family had a hard time letting go as they made a commitment to bring their very best.
- ★ AI on 4/12/15 to Jo Bull Classic Smith 2008. Checked Safe AI.
- ★ PE from 6/1/15 to 7/15/15 to LCC 743 Straight Shooter 456.

41

**VH IM SO FANCY 4240**

BD: 1-8-2014 Cow HB006023 Tattoo: 240 66% HB

Bar Z Balder 8211 HB003581	JN Balder 5044 Bar Z Boomer 211	Feltons Langworth 249 JN Baldee 044 Bar Z Balder 55 Bar Z New Era 036	Act BW 68	
Bedwells MS J240 NR/2289	OF Heston 242 819U O F Marie 786 PX	Feltons Legend 242 OF Dominette 5C 836H CAR Chinook 786 OF Trackette 558R	Adj WW 566	
			Adj YW 870	
BW	WW	Milk	M&G	YW
+1.9	+33	+14	+31	+50

- ★ Consigned by Smith Black Herefords
- ★ Polled
- ★ This attractive bred heifer is loaded with performance. This female posted an adjusted YW of 870 lbs. with a very light actual BW of 68 lbs.
- ★ PE from 4/25/15 to 6/1/15 to Jo Bull Classic Smith 2008 and then was PE from 6/1/15 to 7/15/15 to LCC 743 Straight Shooter 456.
- ★ Checked safe to Jo Bull Classic Smith 2008. Expected due date is 1/25/16.

42

**VH LITTLE BIT 4246**

BD: 1-15-2014 Cow HB006029 Tattoo: 246 66% HB

Bar Z Balder 8211 HB003581	JN Balder 5044 Bar Z Boomer 211	Feltons Langworth 249 JN Baldee 044 Bar Z Balder 55 Bar Z New Era 036	Act BW 75	
Bedwells MS J246 NR/2295	OF Heston 242 819U O F Anne 424P 959W	Feltons Legend 242 OF Dominette 5C 836H O F Iceman 424P O F Trackette 505R	Adj WW 494	
			Adj YW 811	
BW	WW	Milk	M&G	YW
+2.7	+27	+14	+28	+50

- ★ Consigned by Smith Black Herefords
- ★ Polled
- ★ If you are in search of a female with added foot and bone yet still maintains a very feminine look on the profile take a good look right here.
- ★ PE from 4/25/15 to 6/1/15 to Jo Bull Classic Smith 2008 and then was PE from 6/1/15 to 7/15/15 to LCC 743 Straight Shooter 456.
- ★ Checked safe to Jo Bull Classic Smith 2008. Expected due date is 2/20/16.



Lot 39 - JM Cattle Black Rose 407

43

**VH CUTIES LITTLE LADY 4245**

BD: 1-23-2014 Cow HB006028 Tattoo: 245 66% HB

Bar Z Balder 8211 HB003581	JN Balder 5044 Bar Z Boomer 211	Feltons Langworth 249 JN Baldee 044 Bar Z Balder 55 Bar Z New Era 036	Act BW 75	
Bedwells MS J245 NR/2294	OF Heston 242 819U O F Miss Marie 786 913W	Feltons Legend 242 OF Dominette 5C 836H CAR Chinook 786 O F Evergreen 222 434P	Adj WW 533	
			Adj YW 828	
BW	WW	Milk	M&G	YW
+2.7	+30	+14	+30	+50

- ★ Consigned by Smith Black Herefords
- ★ Polled
- ★ A beautifully designed blazed face female that will sure attract some attention come sale day.
- ★ PE from 6/1/15 to 7/15/15 to LCC 743 Straight Shooter 456. Checked Safe. Estimated due date is 3/5/16.

44

**VH RUSH HOUR 4241**

BD: 2-3-2014 Cow HB006024 Tattoo: 241 66% HB

Bar Z Balder 8211 HB003581	JN Balder 5044 Bar Z Boomer 211	Feltons Langworth 249 JN Baldee 044 Bar Z Balder 55 Bar Z New Era 036	Act BW 89	
Bedwells MD J241 NR/2290	OF Heston 242 819U O F Legend 502R	Feltons Legend 242 OF Dominette 5C 836H O C C Legend 616L O F Marta 105A 642F	Adj WW 588	
			Adj YW 966	
BW	WW	Milk	M&G	YW
+4.2	+35	+15	+32	+50

- ★ Consigned by Smith Black Herefords
- ★ Polled
- ★ 4241 is an easy keeping female who is huge middled, sound structured and loaded with performance. Almost broke the 1,000 pound barrier with an adjusted YW of 966 lbs.
- ★ PE from 4/25/15 to 6/1/15 to Jo Bull Classic Smith 2008 and then was PE from 6/1/15 to 7/15/15 to LCC 743 Straight Shooter 456.
- ★ Checked safe to Jo Bull Classic Smith 2008. Expected due date is 1/25/16.

45

**SBH FINAL FIRE 409**

BD: 1-26-2014 Cow HB006206 Tattoo: 409 62% HB

SBH Kole 21038 HB003640	JN Balder 7312 JN Baldee 1038	JN Balder 2903 JN Baldee 312 JN Balder 6449 JN Baldee 135	Act BW 59	
RCR Smith's F1 1232 NR/2377	Ponca Creek Final Answer 9001 JRR Fire 116N 943W	S A V Final Answer 0035 ALC Forever Lady W065 JRR Foundation 116N JRR Miss Fire 16F	Adj WW 422	
			Adj YW 672	
BW	WW	Milk	M&G	YW
+1.1	+28	+15	+29	+61

- ★ Consigned by Smith Black Herefords
- ★ Polled
- ★ 409's dam was a first calf heifer. 409 is well built, super correct and moderate in her make.
- ★ AI on 5/9/15 to JO Money Train JN Z928. Checked Safe AI.
- ★ PE from 6/1/15 to 7/15/15 to LCC 743 Straight Shooter 456.

# THE GENETIC ADVANTAGE SALE



Lot 46 - R & R Miss Bismark R57A

## 46 R & R MISS BISMARK R57A

BD: 8-20-2013 Cow NR/2613 Tattoo: R57A 50% HB

SAV Bismarck 5682  
15109865

GAR Grid Maker  
S A V Abigale 0451

GDAR Traveler 044  
GAR Precision 2536  
Schoenes Fix It 826  
S A V Abigale 6062

CES Nicole 148R ET  
P43251455

Westwind JWR Tundra 148R  
CMR Cindy P606 148N ET

TH JWR SOP 16G 57G Tundra 63N  
CES Victoria 4009 B64  
PW Victor Boomer P606  
GV P183 Nicole 9113

Act BW
73
Adj WW
589
Adj YW
739

BW	WW	Milk	M&G	YW
+2.3	+53	+25	+51	+91



Sire of Lot 46 - SAV Bismarck 5682

- \* Consigned by R&R Black Hereford Farm
- \* Polled
- \* Phenotypically R57A is one of the best females being offered in the Genetic Advantage Sale. Just set back and analyze this female they do not come around like this every day! Tremendous depth of rib and flank with a picture perfect bell shape to her underline. Big boned and big hiped with a massive top. So smooth in her lines and has that rocket neck that attaches just perfectly out of the top of her shoulders. Folks this is a power cow in the making! She is good in any breed any color any day!
- \* PE from 6/1/15 to 9/17/15 to R&R Hats Off P606 R85B.
- \* Observed bred on 6/24/15.

# 47 R & R MISS WORLD WIDE R54A

BD: 8-17-2013 Cow NR/2612 Tattoo: 54A 50% HB

SHF Rib Eye M326 R117 KCF Bennett 3008 M326  
 Boyd WorldWide 9050 ET HVH Miss Hudson 83K 8M  
 P42982024 MSU TCF Rachael 22S ET Feltons Legend 242  
 MSU TCF Rachael ET 54N

Act BW	69
Adj WW	616
Adj YW	748

GAR Retail Product GAR Precision 1680  
 SBP Blackcap 7237 GAR EXT 4927  
 15862409 Riverbend Blackcap R616 G A R Integrity  
 A Plus Blackcap 2006

BW	WW	Milk	M&G	YW
+1.0	+41	+24	+44	+70



Lot 47 - R & R Miss World Wide R54A

- ★ Consigned by R&R Black Hereford Farm
- ★ Polled
- ★ What a cow family this direct daughter of World Wide stems from just check out her maternal sister who sells as lot 13. This female will be a producer! She will produce offspring that will have low BW's with optimal growth and tremendous style. She is the kind of female that is often referred to as a belly dragger. May carry as much substance and volume as any female being offered. If you are serious about the Black Hereford business you need to be investing into females that look like this one. Powerful cow family!

★ AI on 3/1/15 to JM Cattle Resolve A746. Checked Safe AI.

# 48 3C'S DAISY A16

BD: 9-16-2013 Cow NR/2582 Tattoo: A16 50% HB

SAF Connection SVF GDAR 216 LTD  
 Sydgen C C & 7 15330743 Sydgen Forever Lady 4087 SAF Royal Queen 5084  
 Sydgen 1407 Corona 2016  
 S A F Forever Lady 8292

Act BW	87
Adj WW	506
Adj YW	743

DRF Victor S97 781 CES Victor 336 S97  
 LPH Bella 0631 15862403 LPH Belinda 9814 CESDRF Victoria S19U 10ET  
 MJR Knight Ryder 644  
 BHF Miss ENF S212 807

BW	WW	Milk	M&G	YW
+2.1	+46	+28	+51	+78



Lot 48 - 3C's Daisy A16

- ★ Consigned by Triple C Black Herefords
- ★ Polled
- ★ Solid F1 bred heifer with superior outcross genetics. Her sire is the highly recognized Angus bull CC & 7. She will create a great opportunity to improve your herd and develop new Black Hereford bloodlines!
- ★ AI on 5/12/15 to WR Casinova 0712.
- ★ PE from 5/27/15 to 7/17/15 to R&R Curve Bender C46K.

# 49 3C'S CHLOE A11

BD: 9-5-2013 Cow NR/2580 Tattoo: A11 50% HB

S A V New Worth 4200 S A V 8180 Traveler 004  
 Buford Bluestem 9974 16543415 LCC Erica NG724 S A V May 2410  
 C A Future Direction 5321  
 LCC Erica LG075

Act BW	59
Adj WW	382
Adj YW	645

LPH Ambrose 0429 LPH Precious 0023  
 LPH Vada 0843 15862409 LPH Vivian 0604 LPH Amber 0207  
 DRF Victor S97 781  
 LPH Vintage Knight 938

BW	WW	Milk	M&G	YW
+1.3	+47	+18	+41	+77



Lot 49 - 3C's Chloe A11

- ★ Consigned by Triple C Black Herefords
- ★ Polled
- ★ Sired by Buford Bluestem the ABS Bull and all time record selling bull at Buford Ranches in Welch, OK. This genetic line will be an outcross for most operations to develop new Black Hereford bloodlines.
- ★ AI on 5/12/15 to WR Casinova 0712.
- ★ PE from 5/27/15 to 7/17/15 to R&R Curve Bender C46K.

# THE GENETIC ADVANTAGE SALE

**50**

## R&R MISS BOOMER 32Z

BD: 9-20-2012 Cow HB004047 Tattoo: R32Z 84% HB

JN Balder 7334 HB000557 JN Balder 4130 JN Baldee 334  
 Feltons Langworth 249 JN Baldee 130 BJH Balder 7504 JN Baldee 005

Act BW
68
Adj WW
Adj YW

TRM 5119 Boomerang 9141 P43064073 RRO TRM Billaboom 29F 7007 ET TRM RRO H41 Martha 5119  
 CS Boomer 29F TRM RRO Phillie 0002 RST ROF Star Linedrive AF Victoria 44F H41

BW	WW	Milk	M&G	YW
+2.7	+26	+15	+28	+51

- ★ Consigned by R&R Black Hereford Farm
- ★ Polled
- ★ This is one of Richard's favorites and it is easy to see why. R32Z is a beautifully designed female with a gorgeous udder. Her Dynasty heifer calf is long made with a solid white face.
- ★ PE from 6/1/15 to 9/17/15 to JN Balder A146.



Lot 50 - R&R Miss Boomer 32Z

**LOT 50A:** Heifer calf (reg. pending) born 2/16/15, sired by BCKST Black Dynasty Z420 ET, tattoo R17C. BW 86lbs.

**51**

## RR MISS ON TRACK R37A

BD: 2-12-2013 Cow NR/2391 Tattoo: R37A 50% HB

S S Fast Track M719 15926857 Mytty In Focus S S Miss Objective OT26 5J5  
 SAF Focus Of E R Mytty Countess 906 S S Objective T510 OT26 S S Miss Diane 1407 H310

Act BW
81
Adj WW
Adj YW

SPH Vicki 390 S15 P42770208 CES Victor 4009 B390 ET SPH Vicki Will-Via Max M7  
 HRP Victor 72A 4009 CES Betsy 103T S8 Will-Via CCC Max CMF 7A Vicki 444H

BW	WW	Milk	M&G	YW

- ★ Consigned by R&R Black Hereford Farm
- ★ Polled
- ★ If you like cattle that are a little bigger and longer made then you will love this female. Just a two-year old this female will only get better with age as she matures out. She will be one massive, impressive individual some day. Her heifer calf has typical Hereford markings and is ultra nice.
- ★ PE from 6/1/15 to 9/17/15 to R&R Hats Off P606 R85B.



Lot 51 - RR Miss On Track R37A

**LOT 51A:** Heifer calf (reg. pending) born 2/1/14, sired by JN Balder 9622, tattoo R15C. BW 72 lbs.

**52**

## BRUSERS LADY DETERS 374

BD: 2-21-2013 Cow HB004077 Tattoo: 374 70% HB

JN Balder 8475 HB000919 JN Balder 1905 JN Baldee 475  
 Feltons Langworth 249 JN Baldee 905 E E 394 HY Trend 819 EE MS 5102 L1 0108

Act BW
85
Adj WW
502
Adj YW

JN Baldee 931 HX001249 JN Balder 6000 JN Baldee 607  
 JN Balder 1974 EB Selkirk Lass 0007 JN Balder 1905 JN Baldee 019

BW	WW	Milk	M&G	YW
+4.3	+41	+12	+33	+58

- ★ Consigned by JM Cattle Company
- ★ Polled
- ★ Good udder with a super feminine look. Just a two-year old with her whole productive life ahead of her. 374 is doing a wonderful job raising her Resolve heifer calf. Lots of value in this pair as they will sell as a 3 n 1 package.
- ★ PE from 5/1/15 to 7/30/15 to JO Bull Advantage JN Y413.
- ★ Ultrasound safe estimated due date is 4-15-16.



Lot 52 - Brusers Lady Deters 374

**LOT 52A:** Heifer calf (HB006694) born 5/20/14, sired by JN Cattle Resolve A746, tattoo 530. BW 55 lbs.

BW +2.7, WW +35, Milk +14, M&G 32, YW +57

**Lot 54 - Brusers Lady Deters 3538**



**Lot 53 - JN Baldee 1254**

**53**

**JN BALDEE 1254**

BD: 3-12-2012 Cow HB003240 Tattoo: 1254 84% HB

Schu-lar 3T Of 206 5N P42791092	Schu-lar 5N Of 9L 3008 Schu-lar 206 Of 1H 121 ET	RRH Mr Felt 3008 Schu-lar 9L Of 821C KPH Phase 121 Schu-lar 1H Of 1F 597	Act BW 85
JN Baldee 938 HB001239	JN Baldee 6000 JN Baldee 482	JN Baldee 1974 EB Selkirk Lass 0007 JAK L1 Domino L45 JAK MS Americus G109	Adj WW 580
			Adj YW 980

BW	WW	Milk	M&G	YW
+2.8	+36	+15	+33	+75

- ★ Consigned by JM Cattle Company
- ★ Polled
- ★ Wow if you like them big, stout and attractive be sure to find this one in Lawrenceburg, TN on September 19! A direct daughter Schul-Lar 3T who sired the high selling heifer at the 2013 ABHA National Heifer Sale. 1254 is young and good and will certainly end up in a donor pen somewhere in the country. It might as well be your donor pen!
- ★ PE from 5/1/15 to 7/30/15 to JO Bull Advantage JN Y413.
- ★ Ultrasound safe with a heifer calf estimated due date is 3-2-16.

**54**

**BRUSERS LADY DETERS 3538**

BD: 2-17-2013 Cow HB004076 Tattoo: 3538 65% HB

JN Balder 8475 HB000919	JN Balder 1905 JN Baldee 475	Feltons Langworth 249 JN Baldee 905 E E 394 HY Trend 819 EE MS 5102 L1 0108	Act BW 74
DBH Lady Domendur HB000296	JN Balder 2903 JN Baldee 309	BJH Balder 7504 JN Baldee 903 Feltons Long Ton 205 JN Baldee 127	Adj WW 481

BW	WW	Milk	M&G	YW
+1.6	+32	+14	+30	+49

- ★ Consigned by JM Cattle Company
- ★ Polled
- ★ This Bruiser daughter is Homozygous Black and Polled. She will have a beautiful udder when in production as Bruiser daughters do. She is a calving-ease female so it opens up your breeding options. Good young female with tremendous upside.
- ★ The calf she is carrying in her belly sired by Y413 will be Homozygous Black.
- ★ PE from 5/1/15 to 7/30/15 to JO Bull Advantage JN Y413.
- ★ Ultrasound safe. Estimated due date 2/28/16.

# THE GENETIC ADVANTAGE SALE



Lot 55 - R Miss Revolution 001

**55**

## R MISS REVOLUTION 001

BD: 3-8-2011 Cow 43204523 Tattoo: 001

MSU TCF Revolution 4R  
**R 2nd Revolution 2767**  
 P42817015 HR Miss Puckster 51

Feltons Legend 242  
 MSU TCF Rachael ET 54N  
 R Puckster 2923  
 HR Miss Navigate 339

Act BW
Adj WW
Adj YW

Lagrand Wideload 75P ET  
**R Miss Wideload 439**  
 43011916 R Miss Ribstone 303

AA PRF Wideload  
 TSF MS Keynote 729  
 R Ribstone 146  
 VJR Miss Domino 424

BW	WW	Milk	M&G	YW
+3.9	+70	+29	+64	+103

- ★ Consigned by JM Cattle Company
- ★ Polled
- ★ What a way to begin the Hereford division with this stout made, perfectly designed, elegant fronted granddaughter of Revolution 4R. She has an excellent EPD profile topping the +100 mark for YW with a +103.
- ★ JM is retaining a daughter sired by X337 otherwise this female would not be for sale. Triple T Farms in Nancy, KY flushed this female last year.
- ★ **Checked safe with a heifer calf pregnancy by JO Bull Advantage JN 413. Expected due date 11/16/15.**

**56**

## RC MISS HARLAND 096A

BD: 9-6-2013 Cow 43469238 Tattoo: 096A

CJH Harland 408  
**KCF Bennett Harland X337 ET**  
 P43155703 KCF Miss 3008 N68

HH Advance 9005J  
 CJH L1 Dominette 0064  
 RRH Mr Felt 3008  
 KCF Miss 745 K98

Act BW
Adj WW
Adj YW

BN Ribstone 501  
**R Miss Ribstone 780**  
 43107056 R Miss Major 1324

K 64H Ribstone Lad 157K  
 SWS Miss Excel 333  
 RR Major 139  
 R Miss Major 077

BW	WW	Milk	M&G	YW
+3.7	+48	+27	+51	+84

- ★ Consigned by JM Cattle Company
- ★ Polled
- ★ Sired by X337 the former Knoll Crest Farms high seller who commanded \$62,000! This big bodied nice numbered female will make a tremendous cow.
- ★ **AI on 11/20/14 to JM Cattle Resolve A746.**
- ★ **PE from 11/27/14 to 12/31/14 to JM Cattle Resolve A746.**

**57**

## R MISS PATEND 2880

BD: 4-30-2010 Cow 43106965 Tattoo: 2880

R Patend 2426  
**R Patend 2082**  
 42285343 R Miss Captain 679

HR Patend 3214  
 VJR Miss Mark 654  
 R Captain 2507  
 R Miss Domino 305

Act BW
Adj WW
Adj YW

KR Navigator 94P  
**R Miss Navigator 164**  
 42507246 R Miss Patend 778

GK Navigator 212X  
 KR 514 Belle 144Y  
 R Patend 317  
 VJR Miss Encore 149

BW	WW	Milk	M&G	YW
+3.0	+49	+20	+44	+79

- ★ Consigned by JM Cattle Company
- ★ Horned
- ★ This female originated from the Rausch Hereford program in Hoven, SD. Unique bred and a solid EPD profile.
- ★ **AI on 11/20/14 to JM Cattle Resolve A746. Ultrasound safe AI. Estimated due date 9/19/15 with a heifer calf pregnancy.**
- ★ **PE from 11/27/14 to 2/1/15 to JO Bull Advantage JN Y413.**

**58****R MISS NEON 3250**

BD: 5-25-2010 Cow 43107000 Tattoo: 3250

UPS Neon 7024 GH Neon 17N GH Difference Britisher 45L  
42814195 UPS Miss Knight 3866 GH Sir Simba Lass 107K  
BCD 721G Knight 4K  
UPS Lady Domino 2300

Act BW

Adj WW

Adj YW

R Miss Wrangler 5194 JDF 16D Wrangler 15 NJW 5B Wrangler 16D  
42507579 R Miss Perkins 870 JDF Miss 223B 4E  
VJR Perkins 2274  
R Miss Patend 17

BW	WW	Milk	M&G	YW
+3.8	+56	+22	+49	+90

- ★ Consigned by JM Cattle Company
- ★ Horned
- ★ 3250 is a powerfully constructed stout made individual with an excellent EPD spread. She is just coming into her most productive years from a production standpoint.
- ★ **Ultrasound safe to Y413. Estimated due date 10/7/15.**
- ★ **PE from 11/27/14 to 2/1/15 to JO Bull Advantage JN Y413. Checked Safe.**



Lot 58 - R Miss Neon 3250

**59****R MISS WIDELoad 2160**

BD: 4-13-2010 Cow P43106894 Tattoo: 2160

Lagrand Wideload 75P ET AA PRF Wideload AA Boomer 611  
P42538226 TSF MS Keynote 729 PRF MS Scarlett 919  
Remital Keystone 20X  
BTF MS Forage 109W 9001

Act BW

Adj WW

Adj YW

R Miss Centurion 915 KB Centurion 258 Bar-N Centurion 921J  
42603551 R Miss Lad 1732 Montana Miss 9134  
SNS 28E Standard Lad 23J  
R Miss Patend 1307

BW	WW	Milk	M&G	YW
+5.2	+51	+33	+58	+90

- ★ Consigned by JM Cattle Company
- ★ Polled
- ★ If you need to add a little bone and power to your heard this direct daughter of Wideload has it bred into her!
- ★ **Ultrasound safe to Y413. Estimated due date 10/19/15.**
- ★ **PE from 11/27/14 to 2/1/15 to JO Bull Advantage JN Y413. Checked Safe.**



Lot 59 - R Miss Wideload 2160

**60****R MISS ADVANCE 861**

BD: 3-27-2011 Cow 43204846 Tattoo: 861

HH Advance 8181U HH Advance 5212R CL 1 Domino 206M  
42897181 HH Miss Advance 5140R ET HH Miss Advance 1028L  
CL1 Domino 180L  
HH Miss Advance 793G

Act BW

Adj WW

Adj YW

R Miss Wideload 478 Lagrand Wideload 75P ET AA PRF Wideload  
42914140 R Miss Domino 1452 TSF MS Keynote 729  
KB L1 Domino 9169  
R Miss Navigate 880

BW	WW	Milk	M&G	YW
+4.5	+51	+31	+56	+84

- ★ Consigned by JM Cattle Company
- ★ Horned
- ★ A sweet fronted long made female! 861 flows heavy with milk when in production. .
- ★ **AI on 11/20/14 to JM Cattle Resolve A746. Ultrasound safe AI. Estimated due date 9/19/15.**
- ★ **PE from 11/27/14 to 2/1/15 to JO Bull Advantage JN Y413.**



Lot 60 - R Miss Advance 861

# THE GENETIC ADVANTAGE SALE



Lot 63 - MNF 908 Tera 1308

## 61 R MISS REVOLUTION 112

BD: 3-9-2012 Cow P43307107 Tattoo: 112

**MSU TCF Revolution 4R**  
P42593689 MSU TCF Rachael ET 54N

Feltons Legend 242  
Feltons Domino 774  
Feltons G15  
Remital Online 122L  
HH Miss Adv 786G 1ET

R Puckster 2013  
**R Miss Puckster 149**  
43011734 R Miss Wideload 3327

Bar JZ Puckster 892H  
R Miss Patend 421  
Lagrand Wideload 75P ET  
R Miss Online 346

BW	WW	Milk	M&G	YW
+2.6	+59	+25	+55	+95

Act BW
Adj WW
Adj YW

- ★ Consigned by JM Cattle Company
- ★ Polled
- ★ A Revolution 4R daughter who flat out produces! Just look at her Money Train heifer calf. This direct daughter of 4R is young and good with the proof in the progeny. Excellent EPD profile leaving you with many breeding options when the time comes.
- ★ PE 5/1/15 to 7/30/15 to JO Bull Advantage JN 413.

**LOT 61A: Purebred heifer calf (HB006696) born 2/10/15, sired by JO Money Train JN Z928, tattoo 509. BW 80 lbs. BW +3.2, WW +49, Milk +19, M&G 44, YW +82**



Lot 61A - JM Cattle Miss Money 112 509

## 62 SPH MISS 16T DUDE 5A

BD: 3-12-2013 Cow P43434794 Tattoo: 5A

**GBF Dude 139U**  
P42994949 MGM 20X Fancy Man 693 ET  
AAA Victress 4j

Remital Online 122L  
Mohican Fancy 27D  
Huth Vaquero Vic 1F  
BG Lady Stkman 419

GBF Total Boomer 44P  
**SPH MS Asendent Boomer 16T**  
P42826840 GBF MS Ascendant 28P

TS Total 1K  
AAA Miss Thunder 47L  
HH Ascendant 629  
AAA Miss Ascendant 38j

BW	WW	Milk	M&G	YW
+2.7	+35	+13	+31	+57

Act BW
Adj WW
Adj YW

- ★ Consigned by Crescent Hill Black Herefords
- ★ Polled
- ★ A super fancy two year old who is raising a very nice Purebred Black Hereford bull. If you look through her pedigree you will see some very influential lines of Hereford genetics Online 122L and Boomer. The bull she sells bred to, JN Balder A535, is homozygous black and was used very successfully on heifers last year. JM Cattle has a donor 1217 who is a full sib to A535.
- ★ PE from 6/9/15 to 9/1/15 to JN Balder A535.

**LOT 62A: Bull calf (HB006791) born 6/9/15, sired by JN Balder A535, tattoo C019. BW 86 lbs. BW +3.5, WW +36, Milk +14, M&G +32, YW +56**

## 63 MNF 908 TERA 1308

BD: 10-3-2013 Cow P43472140 Tattoo: 1308

**GH Boomer Reliance 908**  
P43165390 LJR P606 Reliance 8R  
GH MS P Pluss 520

PW Victor Boomer P606  
LJR Victra Rose 60K  
RF Postive Plus 73C  
GH MS Embr 8E 323

**MNF Tera 1102**  
P43258091 DR World Class 517 10H  
MV Tera 3091

Feltons 517  
VPI Marathon Lady 0081  
MV Jayhawk Pride 9085  
DMP Nicky 54

BW	WW	Milk	M&G	YW
+6.0	+54	+20	+47	+82

Act BW
Adj WW
Adj YW

- ★ Consigned by Crescent Hill Black Herefords
- ★ Polled
- ★ Dark red, goggle eye and powerful. This female is very balanced from end to end with added bone and muscle yet still very feminine through her front 1/3. She is bred to the super star bull A535 who carries as much or more thickness as any bull in the ABHA.
- ★ PE from 5/1/15 to 9/1/15 to JN Balder A535.





Lot 64 - LVF Revolution Wears Prada 15Z

**64** **LVF REVOLUTION WEARS PRADA 15Z**

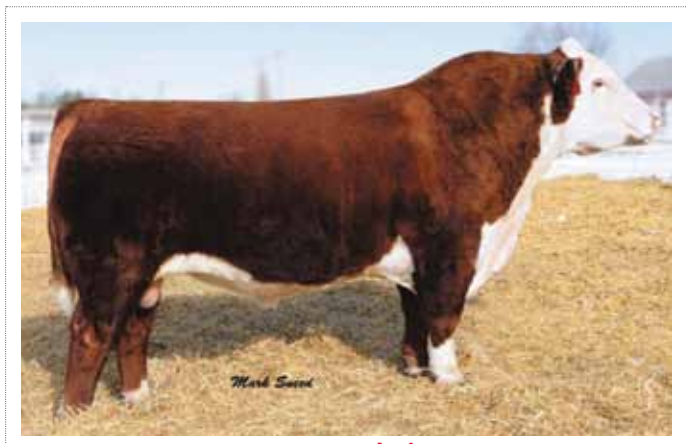
BD: 9-8-2012 Cow P43352771 Tattoo: 15Z

MSU TCF Revolution 4R  
P42593689  
 Feltons Legend 242  
MSU TCF Rachael ET 54N  
 Feltons Domino 774  
Feltons G15  
Remital Online 122L  
HH Miss Adv 786G 1 ET

ADG 210 MS Brooks Key 0145 15U  
P42891131  
 Burks Key Delivery 20X 0145  
ADG MS Kailey Brooke 164D 210  
 Remital Keynote 20X  
FCF Delivery Queen C264  
JNHR 414 Diamnd 164D  
ADG MS Sharon 903

Act BW
Adj WW
Adj YW

BW	VW	Milk	M&G	YW
+3.9	+58	+21	+50	+94



MSU TCF Revolution 4R  
Sire of Lot 64

- ★ Consigned by JM Cattle Company
- ★ Polled
- ★ 15Z is one of the stoutest made 4R daughters you will find anywhere in the country. Big volume female with bone, butt and body. This female will be fun to mate with her very attractive EPD profile and phenotype.
- ★ PE 5/1/15 to 7/30/15 to JO Bull Advantage JN 413.
- ★ Ultrasound safe. Estimated due date 1/14/16.

# THE GENETIC ADVANTAGE SALE



Lot 65 - JO Black Diamond 4C ET

**65**

## JO BLACK DIAMOND 4C ET

BD: 2-20-2014 Bull HB005810 Tattoo: 4C 78% HB

JO Bull Advantage HB002513	JN Balder 8622	JN Balder 6449	Act BW		
	JN Y413	JN Baldee 622		89	
JO Miss Rocky Advance HB002154	JN Baldee 413	J A K 7085 C M K22	Adj WW		
	WR Rocky S104	JAK MS Virginia C101	589		
	JO Miss Rocky Advance 0010	JN Balder 3025	Adj YW		
	JH Miss OXH Advance 8039	WR Amber K303	1069		
	OXH Advance 3250	EU Miss Diamond 305			
	BW	WW	Milk	M&G	YW
	+3.8	+33	+15	+32	+58

- ★ Consigned by JO Bulls
- ★ **Homozygous Black and Homozygous Polled**
- ★ An impressive individual to lead off the bull division in the Inaugural Genetic Advantage Sale. This homozygous black high percentage herd bull is huge bodied, big butted with added length of body. Herd bull time!

**66**

## CHBH PHANTOM B002

BD: 3-6-2014 Bull HB005984 Tattoo: B002 76% HB

JN Balder Y498 HB002522	JN Balder 4136	Feltons Langworth 249	Act BW		
	JN Baldee 498	JN Baldee 136		82	
C Baldee 104 HB002327	WR Curve Bender 8616	J A K L1 Domino L45	Adj WW		
	HL Red Doggie 120M	JAK MS 7085 C M L65	624		
	JN Balder 6449	JN Balder 616	Adj YW		
	Bar B 838C Red Dog	HL British Lass 115	990		
	BW	WW	Milk	M&G	YW
	+1.3	+23	+16	+27	+45

- ★ Consigned by Crescent Hill Black Herefords
- ★ Polled
- ★ B002 is a powerfully constructed bull with added bone and butt. Check out his production ratios and actual performance data. This guy can cover a lot of cows and will add the pounds to your calf crop!



Lot 66 - CHBH Phantom B002



Lot 67 - 3C's Barney B04

**67**

**3C'S BARNEY B04**

BD: 8-29-2014 Bull HB005914 Tattoo: B04 75% HB

JN Balder 9405  
**BCKST Black Dynasty Z420 ET**  
 HB003405 JN Baldee 913

JN Balder 6449  
 JN Baldee 405  
 JN Balder 1905  
 JN Baldee 005

Act BW	71
Adj WW	534
Adj YW	

JN Balder 6432  
**Iron Lady 036 T**  
 HB002103 G-G 712

JN Balder 4008  
 JN Baldee 432  
 JN Balder 3136  
 K-K 6110f Lady Regina L54

BW	VW	Milk	M&G	YW
+2.9	+33	+14	+31	+64

- ★ Consigned by Triple C Black Herefords
- ★ **Homozygous Black and Homozygous Polled**
- ★ Sired by the ever-popular Black Dynasty and by an Iron Lake dam who is super wet when in production. This homozygous black and polled bull is something to spectate in person. Long bodied, square hipped, added bone and extremely attractive on the profile. You have to admire his length of body and smoothness he possesses. A high quality individual that will make a tremendous impact in your herd!

**TRIPLE T'S 284 BY Z420 ET**

**68**

BD: 8-26-2014 Bull HB005836 Tattoo: 284 67% HB

JN Balder 9405  
**BCKST Black Dynasty Z420 ET**  
 HB003405 JN Baldee 913

JN Balder 6449  
 JN Baldee 405  
 JN Balder 1905  
 JN Baldee 005

Act BW	81
Adj WW	649
Adj YW	1050

JN Balder 6038  
**JN Baldee 918**  
 HB001236 JN Baldee 475

Feltons Performer 572  
 JN Baldee 038  
 E E 394 HY Trend 819  
 EE MS 5102 L1 0108

BW	VW	Milk	M&G	YW
+2.4	+41	+16	+37	+69

- ★ Consigned by Triple T Farm and JM Cattle Company
- ★ **Homozygous Black and Polled**

**69**

**JM CATTLE DYNASTY 124T 460**

BD: 9-28-2014 Bull HB006679 Tattoo: 460 75% HB

JN Balder 9405  
**BCKST Black Dynasty Z420 ET**  
 HB003405 JN Baldee 913

JN Balder 6449  
 JN Baldee 405  
 JN Balder 1905  
 JN Baldee 005

Act BW	90
Adj WW	748
Adj YW	1060

JN Balder 6432  
**Iron Lady 124T**  
 HB003002 G Bar G 502

JN Balder 4008  
 JN Baldee 432  
 JN Balder 3136  
 K-K 147H Gwen M82

BW	VW	Milk	M&G	YW
+2.8	+34	+15	+32	+70

- ★ Consigned by JM Cattle Company
- ★ Polled
- ★ 460 is 124T's natural calf and has the highest adjusted weaning weight of 748 lbs!
- ★ Full sisters sell as Lots 2A & 2B and a maternal sister sells as Lot 1.

# THE GENETIC ADVANTAGE SALE



Lot 70 - RR Hats Off P606 R85B

**70**

## RR HATS OFF P606 R85B

BD: 6-7-2014 Bull HB006365 Tattoo: R85B 83% HB

WR Curve Bender 8616	JN Balder 6449	<table border="1"> <tr><td>Act BW</td></tr> <tr><td>88</td></tr> <tr><td>Adj WW</td></tr> <tr><td>717</td></tr> <tr><td>Adj YW</td></tr> <tr><td></td></tr> </table>	Act BW	88	Adj WW	717	Adj YW	
Act BW								
88								
Adj WW								
717								
Adj YW								
R&R Hat Band 012	JN Baldee 616							
HB003551 RR Vickie U8	Tyler Supreme 322 SPH Vic 5050 P17							

PW Victor Boomer P606	Remittal Boomer 46B
SPH Vicki P606 S28	PW Victoria 964 8114
P42774738 JWR 70E Victoria 639 439M	MHF Morgan Victra 215 639 JF Victoria 218 70E

BW	WW	Milk	M&G	YW
2.4	+28	+15	+29	+44

- ★ Consigned by R&R Black Hereford Farm
- ★ Polled
- ★ R85B is out of our R&R Farms Curve Bender son and one of the easiest fleshing best uddered P606 daughters you will find anywhere. Other than a little feed at weaning time he is a product of nature not a creep feeder. He has great eye appeal, slick haired, moderate BW and super weaning and yearling weights. One great package!



Lot 71 - R&R 9405 Tanker

**71**

## R&R 9405 TANKER

BD: 8-15-2014 Bull HB006762 Tattoo: R90B 66% HB

JN Balder 9405	JN Balder 6449	Feltons 615	<table border="1"> <tr><td>Act BW</td></tr> <tr><td>73</td></tr> <tr><td>Adj WW</td></tr> <tr><td>646</td></tr> <tr><td>Adj YW</td></tr> <tr><td></td></tr> </table>	Act BW	73	Adj WW	646	Adj YW	
Act BW									
73									
Adj WW									
646									
Adj YW									
HB001218	JN Baldee 405	JN Baldee 449 Feltons Long Ton 205 JN Baldee 955							

JWS Z13W	Destin JWS Lookout J10	B C Lookout 7024
NR/2397	JWS F44 Power Vicki X33	Z A F Miss Revolution 243 CES JWS Empower 8E F44 ET JWS Ms Liberty U384

BW	WW	Milk	M&G	YW
-0.1	+9	+8	+13	+21

- ★ Consigned by R&R Black Hereford Farm
- ★ **Homozygous Black and Polled**
- ★ A big hipped long made son of 9405. If you are in need of heifer bull pay close attention here. This may be one of the last opportunities to acquire the genetics this young bull has so take advantage.



Lot 72 - R&R Closers Boy

**72**

## R&R CLOSERS BOY

BD: 8-29-2014 Bull HB006764 Tattoo: R95B 76% HB

JN Balder 9498	JN Balder 4136	Feltons Langworth 249	<table border="1"> <tr><td>Act BW</td></tr> <tr><td>76</td></tr> <tr><td>Adj WW</td></tr> <tr><td>672</td></tr> <tr><td>Adj YW</td></tr> <tr><td></td></tr> </table>	Act BW	76	Adj WW	672	Adj YW	
Act BW									
76									
Adj WW									
672									
Adj YW									
HB001246	JN Baldee 498	JN Baldee 136 JAK L1 Domino L45 JAK MS 7085 C M L65							

Miss TRM Legal	WR Curve Bender 8616	JN Balder 6449
HB003180	TRM 5126 I'm Legal 9123	JN Baldee 616 HCC Legacy S01 ET TRM 0089 Martha 5126

BW	WW	Milk	M&G	YW
+1.1	+23	+16	+27	+46

- ★ Consigned by R&R Black Hereford Farm
- ★ **Homozygous Black and Polled**
- ★ R95B has typical Hereford markings, wide topped and big middle. He is Homozygous Black and 76% a F1 Breeders dream. A really really good young bull.



Lot 73 - JM Cattle 8079 1172 436

**73 JM CATTLE 8079 1172 436**

BD: 8-26-2014 Bull HB006674 Tattoo: 436 62% HB

JN Balder 8079 HB000856	JN Balder 4126	JN Balder 1905	Act BW 95
	JN Baldee 079	JN Baldee 126 Vermilion 7337 George 3976 SR MS Mark Dom 5116	
JN Baldee 1172 HB002554	JN Balder 7108	Feltons Performer 572	Adj WW 626
	JN Baldee 040	JN Baldee 108 JN Domino 4794E 4 ET A V F Erica Parks 654	Adj YW 1147

BW	WW	Milk	M&G	YW
+4.5	+45	+15	+38	+78

- ★ Consigned by JM Cattle Company
- ★ Polled
- ★ A goggle eyed, black necked, black legged 8079 son that is big bodied and big scrotal. There are not many bulls in the offering but the quality is high. Take advantage as many of the bulls selling are Herd Bulls in the making.

**74 JM CATTLE 8079 WHOOSIER 441**

BD: 8-29-2014 Bull HB006676 Tattoo: 441 74% HB

JN Balder 8079 HB000856	JN Balder 4126	JN Balder 1905	Act BW 90
	JN Baldee 079	JN Baldee 126 Vermilion 7337 George 3976 SR MS Mark Dom 5116	
Whoosier 77X HB002917	JN Balder 9519	JN Balder 6449	Adj WW 600
	MC Ms Sidney	JN Baldee 519 JN Balder 4026 HL Miss Feltons 202M	Adj YW 1066

BW	WW	Milk	M&G	YW
+4.1	+34	+14	+31	+53

- ★ Consigned by JM Cattle Company
- ★ **Homozygous Black and Polled**
- ★ This bull just keeps coming on every day. A direct son of 8079 with added power and performance.

# THE GENETIC ADVANTAGE SALE

## COMMERCIAL HEIFERS

### 13 BLACK SPRING BRED HEIFERS

- ★ AI on 4/17/15 to Loewen C&L 33N Apollo A42 ET.
- ★ PE from 4-24-15 to 5-14-15 to KCF Bennett Harland X337ET.
- ★ PE from 5-15-15 to 8-1-15 to JM Cattle Star Performer 405.

### 8 BLACK YEARLING OPEN HEIFERS READY TO BREED THIS FALL.



AI Service Sire - Loewen C&L 33N Apollo A42 ET



Pasture Exposure Sire - KCF Bennett Harland X337 ET

# NOTES



Dustin N. Layton  
 PO Box 31684  
 Edmond, OK 73003  
 www.laytonauction.com

PRSR  
 STANDARD  
 U.S. POSTAGE  
 PAID  
 Slate Group

**THE GENETIC ADVANTAGE SALE**

*Elite Black Hereford Genetics*



Lot 2A - 452



Lot 11 - B18



Lot 13 - 2714



Lot 50 - 32Z



Lot 65 - 4C

**Saturday**  
**12 Noon (CST)**  
**Sept 19, 2015**

JM Cattle Co., Lawrenceburg, TN.