

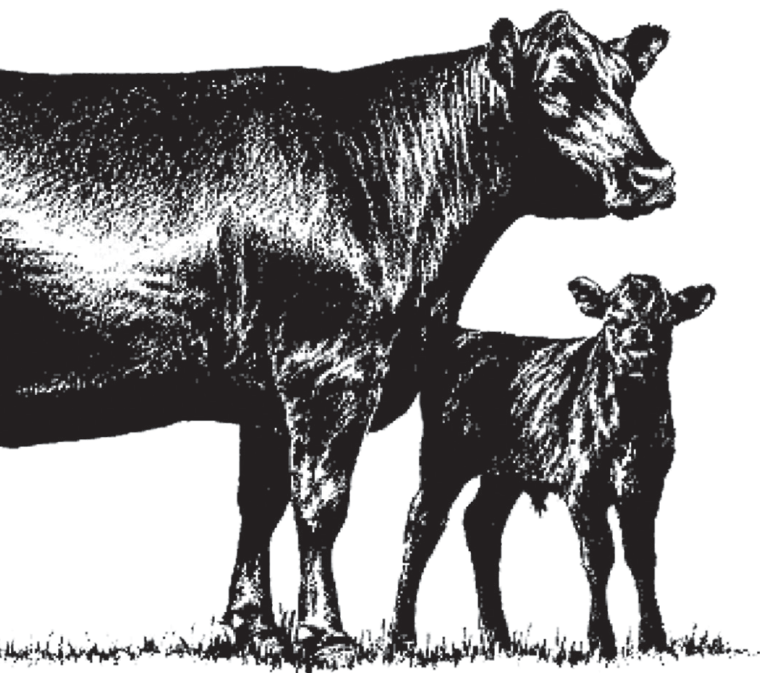


**Charlotte, Arkansas**

# **Northeast Arkansas Angus Association**

**November 15, 2014**

# **FALL SALE**



**[www.neaaa.org](http://www.neaaa.org)**

AM, NH and CA Tested Free or No Carrier Ancestors



**Saturday • 12 Noon**

**November 15, 2014**

**Selling 98 Lots**

**38 Bulls • 60 Females**

Location: Charlotte, Arkansas

Batesville Stockyards, Inc. • Hwy. 25 East

Physical Address: 7750 White Drive, Cord, AR

**Owners**

**Mike Nix, Billy Bob and Melanie Billingsley**

**SALE DAY PHONE**

**870-799-8661**

Wes Tiemann, Regional Manager (816) 244-4462

Richard Dyar, Special Assignment (816) 390-6601

Luke Mobley, Special Assignment (205) 270-0999

---

## **Northeast Arkansas Angus Association**

Tommy Hill, President  
(870) 236-3187

Bill Davis, Vice President  
(501) 283-0601

Pam Taylor, Secretary  
(870) 346-5657

Bill Maxwell, Treasurer  
(870) 878-6485

**Check Us Out!!**

[www.neaaa.org](http://www.neaaa.org)



NEAAA

(Thanks to Amye Winger for our new Facebook!!)



*Sale Managed By:*



**American Livestock Brokers**

**Jarvene Shackelford, Auctioneer #573**

Office: 662-837-4904 • Mobile: 662-837-1776

E-mail: [alb@albauction.com](mailto:alb@albauction.com)

[www.albauction.com](http://www.albauction.com)

## FALL 2014 CONSIGNORS

Consignor	Bull Lots	Female Lots	Consignor	Bull Lots	Female Lots
<b>Appalachian Cattle LLC</b> Jordan Gilreath 1150 Ferge Drive Somerville, TN 38068 901-299-6571 jgilreath@tennesseetractor.com		39-40	<b>Hickory Hill</b> Stan & Angela Smith 5033 CR 1820 West Plains, MO 65775 417-256-1220 • 417-293-8220 hickoryhillangus@hotmail.com		73-74
<b>Asher Farms</b> Thomas Asher 6215 St Rt. N Pomona, MO 65789 417-257-3220 ashers60acres@yahoo.com		41-43	<b>Hill Angus</b> Tommy & Harrie Leigh Hill 21 Sundale Circle Paragould, AR 72450 870-236-3187 • 870-239-1384		75
<b>Barnett Farms</b> Jeff & Heidi Barnett 1555 Rock Creek Rd Hardy, AR 72542 870-710-0681 • 870-710-0372 heidirbar@yahoo.com	3, 6, 7		<b>Kimboob Farm</b> Bob & Kim Thornton 101 Burnett Road Ward, AR 72176 501-993-4479 • 501-993-4479 bthornton001@centurytel.net		76-78
<b>Busted P Ranch</b> Sam Powell P.O. Box 704 Malden, MO 63863 573-576-4395 bustedp@riddlehill.net	9, 11, 12, 36	44-49	<b>LakeView Farms</b> Gary and Christina Spencer PO Box 85 Powhatan, AR 72458 870-878-6939 • 870-809-0910 christina@lakeviewangus.com	13	
<b>Camp Town Angus</b> Britt Camp 10 Hill Home Drive Paragould, AR 72450 870-236-5033 • 870-926-7771 brittcamp@att.net		50-52	<b>Newberry Angus Farm</b> Eric Newberry 5916 Newcastle Drive Jonesboro, AR 72401 870-215-2703 ericbnewberry@hotmail.com	10	
<b>Checkerhill Angus</b> Kelly Smith 7601 CR 8580 West Plains, MO 65775 417-256-5957 • 417-855-9461 kelly.smith@hubbardfeeds.com	18	53-55	<b>R &amp; D Farms</b> Richie & Divella Gray 10166 Galla Rock Rd. Dardanelle, AR 72834 479-576-2721 • 479-477-2351 rdfarms100@yahoo.com	26, 37	
<b>Circle D Farms</b> William G. Davis 449 Dairy Lane Concord, AR 72523 870-668-3716 • 501-283-0601 mdavis449@hughes.net	25, 27		<b>RJ Stacker Cattle Company</b> Jolene Staker 450 Sheepshank Bend Quitman, AR 72131 501-589-3437 • 501-413-7763 sunflowerjolie@yahoo.com	14, 16, 20	
<b>Copeland Angus Ranch</b> Tyler Copeland 514 Mtn. Home Road Paragould, AR 72450 870-450-4089 • 870-215-6740 SVCVET@yahoo.com		56-60	<b>Rockin' Rock Ranch</b> Rich & Patty Horner 1084 Deep Wood Trail Salem, AR 72576 870-895-4998 • 870-754-0283 RLHorner52@me.com	35, 38	
<b>Cross Brothers Farm</b> Jerry Cross 3514 Hwy. 135 N Paragould, AR 72450 870-236-3375 • 870-239-1321 ccs@paragould.net	4	61-63	<b>Rocky Bayou Angus Farm</b> Oscar Crofford PO Box 610 Melbourne, AR 72556 870-346-5214 • 870-291-0442 obcrofford@centurytel.net		79-88
<b>Double D Angus</b> Doug Thornton 11778 Plainview Rd. Carlisle, AR 72024 501-516-6628 d.thornton@yahoo.com	30-33		<b>Satterfield Angus</b> Mark Satterfield 169 Satterfield Farm Road Norfolk, AR 72658 870-499-5379 • 501-944-9274 satterfield@centurytel.net		89-90
<b>Dunman Angus</b> John Dunman 457 Fox Run Truman, AR 72472 870-243-4642 JohnD@crvseed.com	34		<b>Charles Buddy Smith</b> 3617 Fairview Rd. Paragould, AR 72450 870-236-6164	1, 17	
<b>EAE Cattle</b> Allie Martin 4081 Greene Rd. 721 Paragould, AR 72450 870-251-3723 • 870-215-3723 jasonmartin@fusionmedia.tv		64	<b>T-BAR</b> Joe Corbin 88 Angus Trail Tecumseh, MO 65760 417-679-0246 • 870-421-0480 louarta@yahoo.com		91
<b>Foster Angus Ranch</b> Luke and Stan Foster PO Box 91 Paragould, AR 72450 870-565-2803 fosterangusranch@live.com		65	<b>Taylor Angus Ranch</b> Lester & Pam Taylor 2821 Love Hollow Mount Pleasant, AR 72561 870-346-5657 • 870-291-1295 taylorangus@hughes.net	15, 22, 23	92-95
<b>Fulper Angus Farm</b> Chris Fulper PO Box 621 Booneville, MS 38829 662-728-4934 • 662-210-4934 jefulper@gmail.com		66-72	<b>W &amp; G Davis Livestock</b> William Davis 186 CR 635 Bay, AR 72411 870-781-3214 • 870-930-8155	19, 21, 28, 29	
<b>Hay Pat Farm</b> Hayden Taylor 466 Campbell Rd. Williford, AR 72482 870-966-4495 • 870-710-0422 haypat466@aol.com	2, 5, 8		<b>Wingert Cattle Company</b> Scott Wingert 195 Fry Road Rose Bud, AR 72137 501-556-0780 • 501-230-1202 wingerta@live.com	24	96-98

# Things You Should Know:



Charlotte, Arkansas

**Physical Address:**  
7750 White Drive  
Cord, AR 72524  
Batesville Stockyards, Inc.  
Hwy 25 East  
Please refer to map on back cover.

**Accommodations:**  
Batesville, Arkansas:  
Ramada Inn: (870) 698-1800  
Super 8 Motel: (870) 793-5888  
Holiday Inn Express: (870) 698-2700  
Comfort Suites (870) 698-1900

**Health:** Complete health papers will be furnished for immediate shipment. All cattle have proper vaccinations. Calves: Age three months and above will have IBR, BVD, BRSV, Pasteurella, 7-way Blackleg and Haemophilus. Cows and Bulls: IBR, BVD, 7-way Blackleg, Haemophilus and Lepto-vibrio. AM, NH and CA tested free or no carrier ancestors.

**Inspection of Cattle:** Cattle will be available for inspection at the sale site from noon, March 14, 2014 through the completion of the sale.

**Terms:** Cattle sell under the suggested Terms and Conditions of the American Angus Association ([http://www.angus.org/Pub/suggested\\_sale\\_terms.pdf](http://www.angus.org/Pub/suggested_sale_terms.pdf)). Settlement must be made day of sale.

**Liability:** All persons attending this sale do so at their own risk. American Livestock Brokers, Charlotte Stockyards, and the N.E. Arkansas Angus Association act as agents only - agreement is between the buyer and seller.

**Insurance:** Insurance will be available from the sale management on purchases if desired.

**Food & Refreshments:** Food will be available at the sale.

**Announcements:** All announcements made from the sale box take precedence over sale book information.

**Sale Book:** Please bring this sale book with you on sale day.



Visit the *Angus Journal* Website, [www.angusjournal.com](http://www.angusjournal.com), and view this sale book online *References:* American Angus Association®, AHIR®, Angus Source®, CAB®, Pathfinder® EPDs current as of October 2, 2014. Updated EPDs can be viewed at [www.angus.org](http://www.angus.org).

## A Few Words From Sale Manager

Please consider this your special invitation to join us on November 15, 2014 for The Northeast Arkansas Angus Association Annual Fall Sale to be held at the stockyard at Charlotte, Arkansas near Batesville.

This Association has a mission to provide an avenue to promote and sell top Angus Genetics plus encourage the breeding of higher quality Angus within this organization. The purpose of the association is to conduct two Registered Angus Sales per year on the third Saturday of March and November while providing our customers with functional productive cattle at fair prices. Simple - yet a proven concept. This is truly "An Association on the move!!!"

Join us for the finest hospitality plus awesome food from the ASU Heber Springs Culinary School compliments of the Northeast Arkansas Angus Association. This is offered as a special treat to our customers.

Examine this sale book for Angus Genetics of the future and then join us on November 15 to evaluate this offering. You will be impressed with not only the cattle but the people that back the cattle.

Contact me or any consignor and we will be happy to assist you in any manner.

Kindest regards,  
Jarvene



AMERICAN  
LIVESTOCK  
BROKERS

## Breed Average EPDs

### Current Sires<sup>1</sup>

CED	BW	WW	YW	RADG	YH	SC	Doc	HP	CEM	Milk
+6	+1.7	+48	+85	+16	+5	+78	+11	+9.0	+8	+23
MW	MH	SEN	CW	Marb	RE	Fat	\$W	\$F	\$G	\$B
+28	+3	-2.66	+27	+44	+39	+011	+32.05	+29.82	+28.06	+69.05

### Current Dams<sup>1</sup>

CED	BW	WW	YW	RADG	YH	SC	Doc	HP	CEM	Milk
+4	+2.1	+44	+77	+15	+6	+67	+9	+8.9	+8	+22
MW	MH	SEN	CW	Marb	RE	Fat	\$W	\$F	\$G	\$B
+28	+3	+1.42	+23	+41	+29	+007	+28.85	+21.91	+26.74	+63.29

### Non-Parent Bulls

CED	BW	WW	YW	RADG	YH	SC	Doc	HP	CEM	Milk
+5	+1.8	+49	+85	+16	+5	+82	+12	+9.5	+8	+24
MW	MH	SEN	CW	Marb	RE	Fat	\$W	\$F	\$G	\$B
		-4.64	+28	+47	+46	+010	+31.51	+30.21	+29.98	+72.74

### Non-Parent Cows

CED	BW	WW	YW	RADG	YH	SC	Doc	HP	CEM	Milk
+5	+1.8	+48	+85	+16	+5	+76	+12	+9.6	+8	+24
MW	MH	SEN	CW	Marb	RE	Fat	\$W	\$F	\$G	\$B
		-4.59	+28	+51	+49	+010	+31.23	+29.87	+30.31	+72.95

<sup>1</sup> at least one calf record in herd book within the past two years

# Semen Donation Auction

Sam Powell, Busted P Ranch 573-276-2749

Donates \$100 for Juniors

## LAKEVIEW PERFECT 905 [DDF]

BEPD	WEPD	YEPD	MILK	CW	MARB	REA	FAT
+2	+76	+125	+23	+55	+58	+14	-.029
				SW	SF	SG	SB
				+47.32	+69.11	+30.66	+101.14

Sire: SS Objective T510 OT26  
MGS: WAR Alliance 9126 6006

BW: 65                      Ratio: 90  
Adj. WW: 673              Ratio: 105  
Adj. YW: 1,132              Ratio: 106

Christina Spencer · 870-878-6939  
Christina@lakeviewangus.com

**5 units LakeView  
Perfect 905**

*Now part of  
Genex Lineup*

## TMB ANGUS

### Breeding Services LLC

Terry & Mary Brown · 870-204-2425

10 units JMB Traction 292 7AN394 AAA#17262374

10 units Connealy Full Proof 682E 7AN372 AAA#16204942

## Southeast Select Sires

Wade Hall (501) 454-7806  
and/or

Terry M. Brown (870) 204-2425

10 Units Connealy Combination 0188 7AN352 AAA# 16748950

10 units SAT Revival 210 7AN386 AAA# 17329930



## Accelerated Genetics

Mary Ann Brown: 870-204-2424



10 units MF Net Return 8197 014AN00364

AAA# 16036822



**Bobby Robertson: 918-822-0020**

and/or

**Terry M. Brown: 870-204-2425**

10 units PVF Insight 0129 1AN01313 AAA# 16805884

10 units SAV Bismarck 5682 1AN01131 AAA# 15109865



**MultiMin USA-MultiMin 90**

**Mike Runner · 918-693-3838**

Northeast Arkansas Angus Association Sponsor

Donating \$250 to the NEAAA.

Brittany & David Carwell

B & D Genetics · 870-588-4205

Certificate for 20 each Bio-PRYN pregnancy tests and supplies (tubes & needles) to take the samples.



**Luke & Stan Foster  
Foster Angus Ranch  
870-565-2803**

**Buford Ranches  
Mike Horrell, Mgr.  
918-948-5104**

10 Units BUF Blackhawk W969 AAA#16660549

10 Units Buford Oklahoma X239 AAA#16701554

## VITAFERM®

HAYDEN TAYLOR · 870-710-0422 - Cell

**100 lbs. Vita Ferm Concept Aid**



### **ASU Culinary School of Heber Springs, AR**

The Northeast Arkansas Angus Association acknowledges with great appreciation the ASU Culinary School and Dr. Rusty Miller, instructor along with students for preparing the meat and other items for the Friday night meal plus the Saturday lunch. This is an exciting program with various degree opportunities offering students a path to enter the Hospitality/Tourism business, the largest industry in the world and the second largest industry in the State of Arkansas.

You may go to [rdmiller@asub.edu](mailto:rdmiller@asub.edu) or phone 501-362-1221 for further information concerning a Hospitality Degree with emphasis on culinary and/or administration.

**Northeast Arkansas Angus Association Sponsored \$500 Scholarship for 2014 going to David York, a second year culinary student from Rison, AR at ASU-Heber. David plans to complete his Associate degree in the Spring of 2015. Congratulations Mr. York.**



Bill's Fresh Market is now offering Certified Angus Beef! They are the only market in the region offering CAB products and at the best prices you will find anywhere. They will also cut to order! Bill's Fresh Market has five locations; two in Jonesboro, Tuckerman, Batesville and Marked Tree. Check out their specials on the web at [www.bills-freshmarket.com](http://www.bills-freshmarket.com) click on "Circular" or call for more information 870-910-0225.

Meat for Friday night and Saturday lunch provided by Bill's Fresh Market and the Northeast Arkansas Angus Association.

### **Nanci Solis, DVM**

Sale Day Veterinary  
**THOUSAND HILLS VETERINARY SERVICE**  
7020 White Drive  
Charlotte, AR 72522  
870-793-3337

E-mail: [info@1000hillsveterinary.com](mailto:info@1000hillsveterinary.com)

**Dr. Solis will be available Sale Day or you may contact her with your questions. She will be happy to assist you.**





## Connealy Final Product

### 1 **BS GOOD PRODUCT 80**

Birth Date: 11-15-2013

Bull 17848326

Tattoo: 136

Connealy Product 568  
**Connealy Final Product**  
**15848422** #Ebonista of Conanga 471  
 #Mytty In Focus (RF)  
**BS Special Queen 70**  
**16053686** BS Miss Special Maid 75

#GAR Retail Product  
 Pride Fine of Conanga 566  
 #Connealy Deep Canyon 454  
 Ebonisa of Conanga 5469  
 #SAF Focus of ER  
 Mytty Countess 906  
 #JR Something Special  
 Kattie Danielle

<b>CW</b>
N/A
<b>MARB</b>
N/A
<b>REA</b>
N/A
<b>FAT</b>
N/A

BEPD	WEPD	YEPD	MILK	\$W	\$F	\$G	\$B
+1.9	+158	+103	+26	+35.80	+48.07	N/A	N/A

- **Consignor: Charles "Buddy" Smith, Paragould, AR**
- BW: 80
- A thick-made, attractive son of Final Product.
- His dam is by Mytty In Focus and out of Something Special daughter.
- Top 10% YW and \$F, top 15% WW, top 25% BW and \$W.

### 2 **HAYPATS CAMPBELL 173A** [DDP]

Birth Date: 11-14-2013

Bull 17880916

Tattoo: 173A

Dunlouse Jipsey Earl E161 (RF)  
**BUBS Earl X79**  
**16789453** BUBS Ethta Pride M21  
 BUBS Captain Jack TA03  
**Haypats Black Pearl 100X**  
**16778558** HPF Laura 16S

Betro of Classlochie  
 Dunlouse Jipsey Clova C095  
 +Bubs Crown Prince  
 #+Ankony Pride 1N19  
 #Boyd On Target 1083  
 Hickory Hill Blackbird NA02  
 #+Boyd New Day 8005  
 AF Laura Max Withdrawal 426

<b>CW</b>
N/A
<b>MARB</b>
N/A
<b>REA</b>
N/A
<b>FAT</b>
N/A

BEPD	WEPD	YEPD	MILK	\$W	\$F	\$G	\$B
+2.6	+34	+59	+23	+24.77	+4.64	N/A	N/A

- **Consignor: Hay Pat Farm, Williford, AR**
- This bull along with his paternal brother, Lot 5, will do a good job.
- His dam is a highly productive Captain Jack daughter whose GAR Ultimate son sold as Lot 6 in the 2013 Fall Northeast Arkansas Angus Association Sale.
- This one is even better.

### 3 **B F PRINCE JACK**

Birth Date: 11-11-2013

Bull 17875159

Tattoo: A27

BUBS Captain Jack TA03  
**Haypats Prince Jack 31Y**  
**16980497** HPF Princess 68U  
 #SAV 8180 Traveler 004 (RF)  
**HPF Rita's Traveler 004 47T**  
**15907502** JCS Miss Rita 115

#Boyd On Target 1083  
 Hickory Hill Blackbird NA02  
 BUBS Buzzsaw P126  
 HPF Princess 365  
 #Sitz Traveler 8180  
 +Boyd Forever Lady 8003  
 JCS Over Draft 518  
 JCS Rita 339

<b>CW</b>
N/A
<b>MARB</b>
N/A
<b>REA</b>
N/A
<b>FAT</b>
N/A

BEPD	WEPD	YEPD	MILK	\$W	\$F	\$G	\$B
+12.7	+142	N/A	+22	N/A	N/A	N/A	N/A

- **Consignor: Barnett Farms, Hardy, AR**
- An impressive young bull that combines Captain Jack with Traveler 004. Lots of strong maternal genetics here.

**4****CBF OBJECTIVE 3113** [DDF]

Birth Date: 11-10-2013

Bull 17653437

Tattoo: 3113

#SS Traveler 6807 T510

#DHD Traveler 6807

**SS Objective T510 OT26**

#SS Miss Hi Spade A114

#13776378 SS Miss Rita R011 7R8

SS Rito Rito R76 R011

SS Miss Ultress U56

#GAR Predestined

#B/R New Design 036

**CBF Thomas Lucy 311**

#+GAR Ext 4206

17178904 Thomas Lucy 71108

+MtnMeadow Beefmaker Too

+Thomas Lucy 4978

<b>CW</b>
I+23
<b>MARB</b>
I+.94
<b>REA</b>
I+.51
<b>FAT</b>
I-.008

BEPD	WEPD	YEPD	MILK	\$W	\$F	\$G	\$B
+2.6	+57	+99	+28	+33.57	+43.21	+48.56	+87.73

• **Consignor: Cross Brothers Farm, Paragould, AR**

• A low birth weight son of Objective out of a really good Predestined dam, that in turn is out of the donor cow, Thomas Lucy 71108.

• Top 3% \$QG, top 4% Marbling and \$G, top 20% WW, YW, \$F, \$FG and \$B.

**5****HAYPATS SIR JAMES 133A**

Birth Date: 11-6-2013

Bull 17880917

Tattoo: 133A

Dunlouse Jipsey Earl E161 [DF]

Betro of Classlochie

**BUBS Earl X79**

Dunlouse Jipsey Clova C095

16789453 BUBS Ethta Pride M21

+Bubs Crown Prince

BUBS Captain Jack TA03

#+Ankony Pride 1N19

**Haypats Black Pearl 60X**

#Boyd On Target 1083

16778560 HPF Princess 365

Hickory Hill Blackbird NA02

#Connealy Freightliner

JCS Erica 571

<b>CW</b>
N/A
<b>MARB</b>
N/A
<b>REA</b>
N/A
<b>FAT</b>
N/A

BEPD	WEPD	YEPD	MILK	\$W	\$F	\$G	\$B
+2.6	+34	+58	+26	+26.17	+3.50	N/A	N/A

• **Consignor: Hay Pat Farm, Williford, AR**

• A brother to Lot 2 and this one is out of an own daughter of Captain Jack. The Captain Jack offspring excel.

• This bull has been the pick of the bull calves by everyone who has seen them.

• He had 791 lbs. Weaning Weight and will be well over 1,000 lbs. by sale day. Bub Ranch bred top to bottom. You are going to like this bull.

**6****B F WATCHMAN**

Birth Date: 10-28-2013

Bull 17875158

Tattoo: A25

+BC Lookout 7024

OCC Legend 616L

**Silveiras Watchout 0514**

Gibbet Hill Mignonne E37

+16869498 +Silveiras Elba 6546

Gambles Hot Rod

BUBS Ralphy P110

+Silveiras Elba 2520

**BUBS Good N Plenty 582**

+Bubs Don Carlo J76

15660963 BUBS Good N Plenty N8

Bubs Florio K32

#Basin Max 602C

+BUBS Good N Plenty L18

<b>CW</b>
I+22
<b>MARB</b>
I+.30
<b>REA</b>
I+.08
<b>FAT</b>
I+.010

BEPD	WEPD	YEPD	MILK	\$W	\$F	\$G	\$B
I+2.7	I+52	I+88	I+15	+27.58	+31.37	+21.38	+58.41

• **Consignor: Barnett Farms, Hardy, AR**

• A powerful young son of Silveiras Watchout.

• He has the muscle pattern to be a top herd bull. His offspring should excel.

**7****B F IMPRESSION**

Birth Date: 10-25-2013

Bull 17875445

Tattoo: A29

#Connealy Reflection

#Bon View New Design 878

**Connealy Impression**

Happy Grill of Conanga 6260

#15543702 Pearl Pammy of Conanga 194

#Vermilion Dateline 7078

Pearl Jam of Conanga 6114

#+SAV Bismarck 5682 [DF]

#+GAR Grid Maker

**AF Blackbird 586**

SAV Abigale 0451

17140365 AF Blackbird 546

#Connealy Power One

Bar P Blackbird 9871

<b>CW</b>
N/A
<b>MARB</b>
N/A
<b>REA</b>
N/A
<b>FAT</b>
N/A

BEPD	WEPD	YEPD	MILK	\$W	\$F	\$G	\$B
I+1.4	I+56	I+96	I+27	+36.60	+39.75	N/A	N/A

• **Consignor: Barnett Farms, Hardy, AR**

• Genetics to suit the most selective producer.

• He is by Connealy Impression out of a Bismarck dam out of a Connealy Power One daughter.

• Top 15% WW and \$W, top 20% CED, top 25% YW, top 30% \$F.





## Connealy Consensus

# 8

## HAYPATS VINDICATOR 113A

Birth Date: 10-24-2013

Bull 17880909

Tattoo: 113A

KG 5594 Traveler 3020  
**WRA Vindicator W2**  
**16467233** WRA Eileen Bar 115P

#+Boyd New Day 8005

**HPF Rita Ann 26S**

**15527348** JCS Miss Bando 84

RR 7012 Traveler 5594  
 KG Erica 1195  
 #CAR Duke 104  
 WRA Eileen Bar 115M  
 #AAR New Trend  
 SVF Forever Lady 57D  
 #Bon View New Design 878  
 DCS Rito Bando Miss

<b>CW</b>
N/A
<b>MARB</b>
N/A
<b>REA</b>
N/A
<b>FAT</b>
N/A

BEPD	WEPD	YEPD	MILK	\$W	\$F	\$G	\$B
+1	+47	+85	+25	+33.01	+30.01	N/A	N/A

• **Consignor: Hay Pat Farm, Williford, AR**

- A son of the Select Sires AI Sire, WRA Vindicator and out of a Boyd New Day dam out of an 878 daughter.
- Weaning Weight of 805 lbs. and he weighed over 1,000 lbs. at 10 months of age. He will add weight to your calf crop.

# 9

## BPARCONSENSUS 1114 P17

Birth Date: 10-15-2013

Bull 17809897

Tattoo: P17

Connealy Consensus  
**Connealy Consensus 3191 718**  
**+17073447** #Executa of Conanga 939

#+SAV Bismarck 5682 (RF)

**Bpar Lady Traveler 1114**

**17031829** WRR Lady Traveler 940

#KMK Alliance 6595 I87  
 Blinda of Conanga 004  
 #Jauer 353 Traveler 589 27  
 #Exec of Conanga 6940  
 #+GAR Grid Maker  
 SAV Abigale 0451  
 #HARB Pendleton 765 JH  
 WRR Lady Objective 752

<b>CW</b>
N/A
<b>MARB</b>
N/A
<b>REA</b>
N/A
<b>FAT</b>
N/A

BEPD	WEPD	YEPD	MILK	\$W	\$F	\$G	\$B
I-3	I+67	I+110	I+25	+43.07	+52.87	N/A	N/A

• **Consignor: Busted P Ranch, Malden, MO**

- A highly impressive young Consensus son out of a really good Bismarck dam. This is the type bull to help move your herd in a forward direction.
- Top 2% WW, top 5% YW, \$W and \$F, top 10% BW, top 15% CED. Semen tested.

# 10

## NEWBERRY PROWLER A23

Birth Date: 10-3-2013

Bull +17849409

Tattoo: A23

HF Kodiak 5R  
**HF Prowler 43U**  
**16894092** HF Rosebud 98P

#+OCC Emblazon 854E

**Duff EM 814G DixieErica 7132**

**+16795811** OCC Dixie Erica 814G

Sandy Bar Advantage 43M  
 Wilbar Ruby 955N  
 +Riverbend Powerline 0050  
 HF Rosebud 138J  
 #DHD Traveler 6807  
 Dixie Erica of CH 1019  
 #OCC Anchor 771A  
 OCC Dixie Erica 764C

<b>CW</b>
I+19
<b>MARB</b>
I+.37
<b>REA</b>
I+.36
<b>FAT</b>
I+.027

BEPD	WEPD	YEPD	MILK	\$W	\$F	\$G	\$B
I+1.7	I+54	I+86	I+13	+41.24	+27.84	+26.45	+59.39

• **Consignor: Newberry Angus Farm, Jonesboro, AR**

- Adj. WW: 684; Adj. YW: 1,182
- An ET bull is sired by HF Prowler 43U. The sire sold an interest for \$100,000 at private treaty, during the 2012 National Western. He is Canadian bred.
- Individual ratios for birth and weaning over 100.
- He is a thick, big-top, big-butted and heavy boned bull.
- His dam is a donor in my program and is out of the famous Dixie Erica 814G which produced Duff New Edition and Duff Basic Instinct, both which are AI sires.

**11****BPAR OBJECTIVE E14 EP14**

Birth Date: 9-28-2013

Bull +17887395

Tattoo: EP14

#SS Traveler 6807 T510  
**SS Objective T510 0T26**  
 #13776378 SS Miss Rita R011 7R8

#JLB Exacto 416  
**BPAR Forever Lady 416-E14**  
 +14231693 GDAR Forever Lady 178

#DHD Traveler 6807  
 #SS Miss Hi Spade A114  
 SS Rito Rito R76 R011  
 SS Miss Ultress U56  
 #GAR Precision 1680  
 +Brost Burgess 041  
 #Traveler 3173 GDAR  
 #GDAR Forever Lady 98

<b>CW</b>
+25
<b>MARB</b>
+47
<b>REA</b>
+30
<b>FAT</b>
-024

<b>BE PD</b>	<b>WE PD</b>	<b>YE PD</b>	<b>MILK</b>
+2.4	+52	+88	+31

<b>\$W</b>	<b>\$F</b>	<b>\$G</b>	<b>\$B</b>
+36.06	+31.37	+33.89	+74.88

• **Consignor: Busted P Ranch, Malden, MO**

- An attractive Objective son out of a daughter of the Sire Alliance Winner, JLB Exacto 416 a cow used in the BPAR donor program and descends from the great Forever Lady family of females.
- Top 20% \$W and \$YG, top 30% \$G. Semen tested.

**12****BPAR CONSENSUS P11**

Birth Date: 9-20-2013

Bull 17886222

Tattoo: P11

Connealy Consensus  
**Connealy Consensus 3191 718**  
 +17073447 #Executa of Conanga 939

#+HA Image Maker 0415  
**Bpar Forever Lady 1119 E912**  
 +17031831 +SydGen BPAR Forever Lady

#KMK Alliance 6595 I87  
 Blinda of Conanga 004  
 #Jauer 353 Traveler 589 27  
 #Exec of Conanga 6940  
 #Hero 6267 of RR 2418  
 HA Rito Blackcap 9038  
 #+SAF 598 Bando 5175  
 GDAR Forever Lady 246

<b>CW</b>
+49
<b>MARB</b>
+33
<b>REA</b>
+51
<b>FAT</b>
-029

<b>BE PD</b>	<b>WE PD</b>	<b>YE PD</b>	<b>MILK</b>
+1.3	+63	+103	+28

<b>\$W</b>	<b>\$F</b>	<b>\$G</b>	<b>\$B</b>
+49.15	+45.45	+27.04	+91.67

• **Consignor: Busted P Ranch, Malden, MO**

- Another BPAR bred bull with a strong performance pedigree. This Consensus son is out of an Image Maker daughter used in the BPAR donor program.
- Top 2% \$W, top 10% WW, top 15% YW, \$F and \$B. Semen tested.

**13****LAKEVIEW TOP SIDE 310**

Birth Date: 9-20-2013

Bull 17677013

Tattoo: 310

#SS Traveler 6807 T510  
**SS Objective T510 0T26**  
 #13776378 SS Miss Rita R011 7R8

#WAR Alliance 9126 6006  
**LakeView Blackbird 915**  
 16495861 LakeView Blackbird 410

#DHD Traveler 6807  
 #SS Miss Hi Spade A114  
 SS Rito Rito R76 R011  
 SS Miss Ultress U56  
 #Sitz Alliance 6595  
 WAR Bando 6006 598 4053  
 #+SAF Strategy 9015  
 RF Blackbird 2058

<b>CW</b>
+37
<b>MARB</b>
+65
<b>REA</b>
+33
<b>FAT</b>
+001

<b>BE PD</b>	<b>WE PD</b>	<b>YE PD</b>	<b>MILK</b>
+1.1	+55	+101	+22

<b>\$W</b>	<b>\$F</b>	<b>\$G</b>	<b>\$B</b>
+34.04	+46.94	+35.62	+90.26

• **Consignor: LakeView Farms, Powhatan, AR**

- BW: 75
- A curve-bender sire here with calving ease that is proven top and bottom for heifer yet still has triple digit growth that will add pounds to the mature cows.
- He ranks in the top 20% or better of the breed in CED, YW, \$F, \$QG and \$B and sports 7 Pathfinders on his pedigree. His dam is beautifully uddered and very easy fleshing.
- An excellent set of feet and legs and very docile personality.
- All yearling AHIR and ultrasound data will be available by Sale day. Certified Brucellosis free herd ARB27, Johnes Free herd and Anaplasmosis vaccinated.

**14****MR HOOVER 312**

Birth Date: 9-15-2013

Bull 17817488

Tattoo: 312

#SydGen CC&7  
**Hoover Dam**  
 16124994 #Erica of Ellston C124

#Mytty In Focus (RF)  
**RRR Anna Mytty Maker 1123**  
 17006657 RRR Anna Maker 9046

#+SAF Connection  
 SydGen Forever Lady 4087  
 #TC Gridiron 258  
 Erica of Ellston V65

#SAF Focus of ER  
 Mytty Countess 906  
 RC Grid Maker 649  
 Springfield Anna 0100

<b>S</b>	<b>D</b>
<b>CW</b>	<b>CW</b>
+28	N/A
<b>MARB</b>	<b>MARB</b>
+71	N/A
<b>REA</b>	<b>REA</b>
+1.14	N/A
<b>FAT</b>	<b>FAT</b>
-.047	N/A

<b>BE PD</b>	<b>WE PD</b>	<b>YE PD</b>	<b>MILK</b>
+1	+51	+96	+32
<b>S</b>			
N/A	N/A	N/A	N/A
<b>D</b>			
N/A	N/A	N/A	N/A

<b>\$W</b>	<b>\$F</b>	<b>\$G</b>	<b>\$B</b>
+39.27	+42.31	+51.09	+96.32
N/A	N/A	N/A	N/A

• **Consignor: RJ Stacker Cattle Company, Quitman, AR**

- A really good son of the ever popular Hoover Dam and out of a Mytty In Focus daughter from the Horner program.
- This one should sire a great set of calves.

# 15 TAR F Focus Tyler Farr 328

Birth Date: 9-13-2013

Bull 17648727

Tattoo: 328

#Mytty In Focus <sup>[DF]</sup>  
**Yon Future Focus T219**  
**15748572** YON Hazel R133

#SAF Focus of ER  
 Mytty Countess 906  
 #CA Future Direction 5321  
 +YON Hazel N02  
 #SydGen 1407 Corona 2016  
 TAR Emuls PRNCS Rose Ann 406  
 #Quaker Hill Objective 3J15  
 RBA Bando Becky 819

CW
N/A
MARB
N/A
REA
N/A
FAT
N/A

TAR Corona BigNRich 806

**TAR BNR Corona Ora Rose 36**  
**16830074** RBA Objective Betts 802

BEPD	WEPD	YEPD	MILK	\$W	\$F	\$G	\$B
+3.0	+65	+106	+27	+40.57	+48.46	N/A	N/A

- **Consignor: Taylor Angus Ranch, Mount Pleasant, AR**
- Great confirmation that includes the docility and thickness of In Focus in a taller version from Future Direction.
- No wimpy calves from this Future Focus son! Tyler 328 exhibited amazing growth from 80 lb. birth weight to adj. weaning weight of 677 lbs., a whopping 112 ratio and average daily gain of 3.32 lbs. Nuff said.

# 16 RJS Bismarck 311

Birth Date: 9-10-2013

Bull 17810966

Tattoo: 311

#+SAV Bismarck 5682 <sup>[DF]</sup>  
**SSR Bismarck 5600**  
**+16928691** Westwind Julia DJH 650

#+GAR Grid Maker  
 SAV Abigale 0451  
 #N Bar Emulation EXT  
 Julia of Westwind DJH 487

S	D
CW	CW
I+14	N/A
MARB	MARB
I+39	N/A
REA	REA
I+42	N/A
FAT	FAT
I+003	N/A

BUBS Buzzsaw P126

**HPF Pride 108U**  
**16281347** HV Pride 50

NPF 905 1P19  
 Bubs Onion K93  
 Williams Bando 598 1036  
 Miss HV Pride 99

	BEPD	WEPD	YEPD	MILK	\$W	\$F	\$G	\$B
S	I+1.6	I+47	I+83	I+22	+34.78	+27.48	+31.34	+57.45
D	+1.0	+34	+52	+16	+28.11	-3.24	N/A	N/A

- **Consignor: RJ Stacker Cattle Company, Quitman, AR**
- This bull has a great combination of genetics.
- His sire is a Bismarck son out of an EXT dam.
- His dam is a product of the Hay Pat program.

# 17 B S Final Power 70

Birth Date: 9-9-2013

Bull 17820672

Tattoo: 113

Connealy Product 568  
**Connealy Final Product**  
**15848422** #Ebonista of Conanga 471

#GAR Retail Product  
 Pride Fine of Conanga 566  
 #Connealy Deep Canyon 454  
 Ebonista of Conanga 5469  
 HA Future Direction 3540  
 +HA Blackcap Lady 2782  
 #Mytty In Focus <sup>[DF]</sup>  
 BS Lady Jane 68

CW
N/A
MARB
N/A
REA
N/A
FAT
N/A

#HA Program 5652

**Miss Best Program 70**  
**16931046** BS Lady Design 68

BEPD	WEPD	YEPD	MILK	\$W	\$F	\$G	\$B
I+8	I+62	I+108	I+30	+38.86	+52.78	N/A	N/A

- **Consignor: Charles "Buddy" Smith, Paragould, AR**
- BW: 70
- Great combination of strong genetics in this bull.
- You will like this Final Product son out of a Program daughter that is out of a Mytty dam.
- Top 5% YW and \$F, top 10% WW, top 15% \$W, top 25% BW.



**SS Incentive 9J17**



## EXAR Upshot 0562B

18

CHECKERHILL INCENTIVE 312

Tattoo: 312

Birth Date: 9-9-2013      Bull 17833953

<b>SS Incentive 9J17</b> 16508278 #SS Objective T510 0T26 #SS Miss Fran P142 B76 #Boyd On Target 1083 <b>KAR Blackbird 946</b> 16658481 KM Blackbird 880	#SS Traveler 6807 T510 SS Miss Rita R011 7R8 #Basin Franchise P142 SS Miss Priscilla E161 E116 #+SAF 598 Bando 5175 +Boyd Forever Lady 7095 #Bon View New Design 878 KM Blackbird 368	<table border="1" style="width: 100%; border-collapse: collapse;"> <tr><td style="text-align: center;"><b>CW</b></td></tr> <tr><td style="text-align: center;">+42</td></tr> <tr><td style="text-align: center;"><b>MARB</b></td></tr> <tr><td style="text-align: center;">+41</td></tr> <tr><td style="text-align: center;"><b>REA</b></td></tr> <tr><td style="text-align: center;">+74</td></tr> <tr><td style="text-align: center;"><b>FAT</b></td></tr> <tr><td style="text-align: center;">+047</td></tr> </table>	<b>CW</b>	+42	<b>MARB</b>	+41	<b>REA</b>	+74	<b>FAT</b>	+047
<b>CW</b>										
+42										
<b>MARB</b>										
+41										
<b>REA</b>										
+74										
<b>FAT</b>										
+047										

BEPD	WEPD	YEPD	MILK	\$W	\$F	\$G	\$B
+2.1	+46	+97	+30	+24.90	+46.24	+26.41	+85.86

- **Consignor: Checkerhill Angus, West Plains, MO**
- September SS Incentive bull calf.
- This bull is from a Boyd On Target cow that we purchased from Kimzey Angus in Kansas.
- Those cows have been outstanding and we have sold a lot of great show heifers and bulls from this set of cows!
- This calf has a really balanced and solid set of numbers and is very good in his own right!

19

WG FUTURE UPSHOT

Tattoo: 1308

Birth Date: 9-9-2013      Bull 17634254

<b>EXAR Upshot 0562B</b> 16541214 #+EXAR Barbara T020 B/R Future Direction 4268 <b>Ashlee 4268 of TMB</b> 16885974 Creeks Black Betty 04T	#Sitz Upward 307R #Connealy Onward Sitz Henrietta Pride 81M #Isu Imaging Q 9111 LCC Mc Henry Barbar MG382 #CA Future Direction 5321 B/R Ruby 9114 #+BT Equator 395M Blueblood Hallie 268 of SW40	<table border="1" style="width: 100%; border-collapse: collapse;"> <tr> <td style="width: 50%; text-align: center;">S</td> <td style="width: 50%; text-align: center;">D</td> </tr> <tr> <td style="text-align: center;"><b>CW</b></td> <td style="text-align: center;"><b>CW</b></td> </tr> <tr> <td style="text-align: center;">+53</td> <td style="text-align: center;">N/A</td> </tr> <tr> <td style="text-align: center;"><b>MARB</b></td> <td style="text-align: center;"><b>MARB</b></td> </tr> <tr> <td style="text-align: center;">+67</td> <td style="text-align: center;">N/A</td> </tr> <tr> <td style="text-align: center;"><b>REA</b></td> <td style="text-align: center;"><b>REA</b></td> </tr> <tr> <td style="text-align: center;">+1.18</td> <td style="text-align: center;">N/A</td> </tr> <tr> <td style="text-align: center;"><b>FAT</b></td> <td style="text-align: center;"><b>FAT</b></td> </tr> <tr> <td style="text-align: center;">+0.25</td> <td style="text-align: center;">N/A</td> </tr> </table>	S	D	<b>CW</b>	<b>CW</b>	+53	N/A	<b>MARB</b>	<b>MARB</b>	+67	N/A	<b>REA</b>	<b>REA</b>	+1.18	N/A	<b>FAT</b>	<b>FAT</b>	+0.25	N/A
S	D																			
<b>CW</b>	<b>CW</b>																			
+53	N/A																			
<b>MARB</b>	<b>MARB</b>																			
+67	N/A																			
<b>REA</b>	<b>REA</b>																			
+1.18	N/A																			
<b>FAT</b>	<b>FAT</b>																			
+0.25	N/A																			

	BEPD	WEPD	YEPD	MILK	\$W	\$F	\$G	\$B
S	+2.9	+62	+117	+31	+40.33	+65.41	+41.10	+110.43
D	+2.5	+50	+84	+25	+32.18	+27.27	N/A	N/A

- **Consignor: W & G Davis Livestock, Bay, AR**
- BW: 80; WW: 780; YW: 1,160
- A powerful son of the Express, BoBo and ABS AI sire, EXAR Upshot 0562B. His dam is a consistent producer.

20

RJS BISMARCK 310

Tattoo: 310

Birth Date: 9-7-2013      Bull 17810965

<b>SSR Bismarck 5600</b> +16928691 Westwind Julia DJH 650 #FAR Krugerrand 410H <b>LakeView Golden Erica 506</b> 15121256 Lakeviews New Trend 006	#+SAV Bismarck 5682 (P01) #+GAR Grid Maker SAV Abigale 0451 #N Bar Emulation EXT Julia of Westwind DJH 487 #Krugerrand of Donamere 490 #FAR Erianna 286F Williams Flash Point 241 WAF Miss Erica 445	<table border="1" style="width: 100%; border-collapse: collapse;"> <tr> <td style="width: 50%; text-align: center;">S</td> <td style="width: 50%; text-align: center;">D</td> </tr> <tr> <td style="text-align: center;"><b>CW</b></td> <td style="text-align: center;"><b>CW</b></td> </tr> <tr> <td style="text-align: center;">+14</td> <td style="text-align: center;">+40</td> </tr> <tr> <td style="text-align: center;"><b>MARB</b></td> <td style="text-align: center;"><b>MARB</b></td> </tr> <tr> <td style="text-align: center;">+39</td> <td style="text-align: center;">+17</td> </tr> <tr> <td style="text-align: center;"><b>REA</b></td> <td style="text-align: center;"><b>REA</b></td> </tr> <tr> <td style="text-align: center;">+42</td> <td style="text-align: center;">+17</td> </tr> <tr> <td style="text-align: center;"><b>FAT</b></td> <td style="text-align: center;"><b>FAT</b></td> </tr> <tr> <td style="text-align: center;">+003</td> <td style="text-align: center;">-005</td> </tr> </table>	S	D	<b>CW</b>	<b>CW</b>	+14	+40	<b>MARB</b>	<b>MARB</b>	+39	+17	<b>REA</b>	<b>REA</b>	+42	+17	<b>FAT</b>	<b>FAT</b>	+003	-005
S	D																			
<b>CW</b>	<b>CW</b>																			
+14	+40																			
<b>MARB</b>	<b>MARB</b>																			
+39	+17																			
<b>REA</b>	<b>REA</b>																			
+42	+17																			
<b>FAT</b>	<b>FAT</b>																			
+003	-005																			

	BEPD	WEPD	YEPD	MILK	\$W	\$F	\$G	\$B
S	+1.6	+47	+83	+22	+34.78	+27.48	+31.34	+57.45
D	+3.8	+49	+89	+12	+12.82	+34.15	+14.63	+71.31

- **Consignor: RJ Stacker Cattle Company, Quitman, AR**
- A son of the Sugar Spring's Bismarck son out of a dam sired by the growth sire and past Denver Champion, FAR Krugerrand 410H.

**21****WG FINAL FOCUS** [DDP]

Birth Date: 9-7-2013

Bull 17634253

Tattoo: 1393

Connealy Product 568  
**Connealy Final Product**  
**15848422** #Ebonista of Conanga 471

#GAR Retail Product  
 Pride Fine of Conanga 566  
 #Connealy Deep Canyon 454  
 Ebonista of Conanga 5469

#Mytty In Focus [REF]  
**WCC In Focus 70**  
**16258463** Bobby

#SAF Focus of ER  
 Mytty Countess 906  
 Sequoyah K136 of G25  
 K&B EXT 1016

S	D
CW	CW
+34	N/A
MARB	MARB
+34	N/A
REA	REA
+76	N/A
FAT	FAT
+076	N/A

	BEPD	WEPD	YEPD	MILK	\$W	\$F	\$G	\$B
S	+8	+66	+118	+34	+62.18	+64.62	+21.63	+75.56
D	N/A	N/A	N/A	N/A	N/A	N/A	N/A	N/A

- **Consignor: W & G Davis Livestock, Bay, AR**
- BW: 77; WW: 680; YW: 940
- A long-bodied, heavy-muscled son of Final Product and out of a Mytty In Focus dam.
- He combines carcass growth and maternal in an attractive package.

**22****TAR MENTOR JOHN BYRNE 308**

Birth Date: 9-6-2013

Bull 17650914

Tattoo: 308

#GAR Retail Product  
**Connealy Mentor 7374**  
**15832714** #Executa of Conanga 939

#GAR Precision 1680  
 +GAR Ext 4927  
 #Jauer 353 Traveler 589 27  
 #Exec of Conanga 6940  
 #SS Traveler 6807 T510  
 SS Miss Rita R011 7R8  
 #Sitz Alliance 6595  
 Bootheel Bee 344

#SS Objective T510 OT26  
**Checkerhill Bee U04**  
**16151716** Bootheel Bee 329

CW
+30
MARB
+51
REA
+59
FAT
+039

	BEPD	WEPD	YEPD	MILK	\$W	\$F	\$G	\$B
	+1.2	+59	+102	+25	+39.94	+46.19	+31.46	+79.04

- **Consignor: Taylor Angus Ranch, Mount Pleasant, AR**
- Full brother to our herd bull 214 used last fall. This one just sticks out in a crowd.
- Actual birth weight of 85 lbs. and adjusted weaning weight of 618 lbs., ratio of 102 and average daily gain of 3.18 lbs.
- His mother has presented three A.I. babies at a weaning ratio of 106 and her 4th A.I. baby arrived 9-3-14.

**23****TAR LV PERFECT EL GRECO 304**

Birth Date: 9-4-2013

Bull 17658484

Tattoo: 304

#SS Objective T510 OT26  
**LakeView Perfect 905**  
**16495852** #LakeView EXT's Alliance 608

#SS Traveler 6807 T510  
 SS Miss Rita R011 7R8  
 #WAR Alliance 9126 6006  
 MAF Lady Cindy 726  
 #Connealy Onward  
 Sitz Henrietta Pride 81M  
 #KMK Alliance 6595 I87  
 MAF Southern Esso 213

#Sitz Upward 307R  
**MAF Miss Upward Alliance 014**  
**16935572** MAF Southern Alliance 506

CW
N/A
MARB
N/A
REA
N/A
FAT
N/A

	BEPD	WEPD	YEPD	MILK	\$W	\$F	\$G	\$B
	-.6	+71	+118	+28	+47.89	+61.87	N/A	N/A

- **Consignor: Taylor Angus Ranch, Mount Pleasant, AR**
- Outstanding son of LakeView Perfect 905 who shines with a stacked pedigree. Tremendous growth from 71 lb. birth weight to adj. weaning weight of 661 lbs., ratio of 109 and average daily gain of 3.19 lbs.
- This exceptional young bull's EPDs speak loud and clear. He can do it all! Fertile? You better believe it! Check out his scrotal.

**24****W C FINAL ANSWER 913** [DDP]

Birth Date: 6-29-2013

Bull 17732147

Tattoo: 913

#Sitz Traveler 8180  
**SAV Final Answer 0035** [REF]  
**#13592905** SAV Emulous 8145

#GDAR Traveler 71  
 Sitz Everelda Entense 1137  
 #Bon View Bando 598  
 SAV Sky Emulous 2124

#Leachman Saugahatchee 3000C  
**WCC Saugahatchee 78**  
**16258466** Jane

#N Bar Emulation EXT  
 Leachman BC 7100  
 Sequoyah K136 of G25  
 K&B Fame 154

S	D
CW	CW
+13	N/A
MARB	MARB
+51	N/A
REA	REA
+67	N/A
FAT	FAT
+045	N/A

	BEPD	WEPD	YEPD	MILK	\$W	\$F	\$G	\$B
S	-.9	+61	+102	+24	+59.78	+45.15	+34.74	+60.85
D	N/A	N/A	N/A	N/A	N/A	N/A	N/A	N/A

- **Consignor: Wingert Cattle Company, Rose Bud, AR**
- This bull will work on heifers or cows. He weaned at 625 lbs. at 6 months.
- After weaning he was placed on a high forage ration where he gained 4.5 lbs. a day.
- On March 25 at 9 months of age he was ultrasounded and had a 10.8 ribeye and 3.6 IMF.





## KCF Bennett Reliable

# 25

## CDF BILL'S RELIABLE A06

Birth Date: 6-25-2013

Bull 17551975

Tattoo: A06

#KCF Bennett Performer  
**KCF Bennett Reliable**  
**15953356** #KCF Miss Alliance L272

#Connealy Freightliner  
**JMc Enid May 5442 3310**  
**15387447** JMc Enid 3310

#Hyline Right Time 338  
 KCF Miss 589 L182  
 #Sitz Alliance 6595  
 +KCF Miss EXT J30  
 #Bon View Bando 598  
 Joana Erica of Conanga  
 #Connealy Lead On  
 Envelopa of Conanga 847

<b>CW</b>
+38
<b>MARB</b>
+34
<b>REA</b>
+30
<b>FAT</b>
+0.23

<b>BEPD</b>	<b>WEPD</b>	<b>YEPD</b>	<b>MILK</b>
+3.0	+52	+101	+24

<b>\$W</b>	<b>\$F</b>	<b>\$G</b>	<b>\$B</b>
+33.24	+48.51	+21.31	+77.44

- **Consignor: Circle D Farms, Concord, AR**
- BW: 69 (twin w/cow); WW: 543; YW: 1,023
- You can't get a much stronger genetic package. He combines Bennett Performer, Sitz Alliance, Freightliner and Lead On.
- Top 10% \$F, top 15% YW, top 20% CW.
- Complete BSE and Trich tested.

# 26

## RDF DeBULL MAKER <sup>[M1P]</sup>

Birth Date: 5-20-2013

Bull 17800545

Tattoo: 02A

+EF Total 8099  
**WR DeBull D041 of 718**  
**16794094** WR PC Queen 718

#+B/R Ambush 28  
**7L MS Poundmaker 8090**  
**16269014** +EE Ms Poundmaker 573

#TC Total 410  
 GAR 9296 Precision 1743  
 #Three Trees Prime Cut 0145  
 WR NL Queen 551  
 #Rockn D Ambush 1531  
 +B/R Ruby of Tiffany 8250  
 #+Boyd Poundmaker 21  
 #EE MS 594 TA 7127

<b>CW</b>
+37
<b>MARB</b>
+66
<b>REA</b>
+56
<b>FAT</b>
+0.20

<b>BEPD</b>	<b>WEPD</b>	<b>YEPD</b>	<b>MILK</b>
+3.2	+49	+92	+19

<b>\$W</b>	<b>\$F</b>	<b>\$G</b>	<b>\$B</b>
+23.58	+38.05	+36.74	+90.73

- **Consignor: R & D Farms, Dardanelle, AR**
- BW: 66
- Excellent growth and carcass qualities. His dam is by the former top IMF bull, B/R Ambush 28.
- Top 15% \$B, top 20% CW, Marbling and \$QG, top 25% \$G, top 30% \$F.
- EPDs are based on enhanced DNA testing (Genomic Test).
- Will be tested for Trich and receive complete BSE.

# 27

## CDF BILL'S YIELD GRADE A02

Birth Date: 4-28-2013

Bull 17511133

Tattoo: A02

#GAR Precision 1680  
**GAR Yield Grade**  
**#+13724351** +GAR Ext 4526

RDF Destination Z34 01W  
**CDF Maggie's Rose Y10**  
**16950113** CDF Maggie's Rose S01

#Tehama Bando 155  
 9J9 GAR 856  
 #N Bar Emulation EXT  
 +GAR 6807 Traveler 93  
 #B/R Destination 727-928  
 VT 616 Rito Z34  
 Subi 208 Com 346  
 EAF Emulous Rose 442

<b>CW</b>
+47
<b>MARB</b>
+33
<b>REA</b>
+36
<b>FAT</b>
-0.59

<b>BEPD</b>	<b>WEPD</b>	<b>YEPD</b>	<b>MILK</b>
+2.2	+51	+96	+22

<b>\$W</b>	<b>\$F</b>	<b>\$G</b>	<b>\$B</b>
+34.35	+42.31	+28.30	+90.97

- **Consignor: Circle D Farms, Concord, AR**
- BW: 93; WW: 586; YW: 1,005
- EPDs enhanced by DNA profile. A GAR Yield Grade son out of a Destination bred dam.
- Top 10% CW, top 15% \$B, top 20% \$F, top 30% \$W and \$YG.
- Complete BSE and Trich tested.



**28****WG PREDESTINED** [DDP]

Birth Date: 4-6-2013

Bull 17569170

Tattoo: 0134

#B/R New Design 036

**GAR Predestined**

#13395344 #+GAR Ext 4206

RRR Precision 7003

**RRR Precisions Image 0068**

16817694 Chris's Image Marker 603

#VDAR New Trend 315

B/R Blackcap Empress 76

#N Bar Emulation EXT

+GAR 6807 Traveler 1432

#+E&amp;B 1680 Precision 1023

+Springfield Burgess 2516

#+HA Image Maker 0415

Chris's New Design 303

<b>CW</b>
N/A
<b>MARB</b>
N/A
<b>REA</b>
N/A
<b>FAT</b>
N/A

BEPD	WEPD	YEPD	MILK	\$W	\$F	\$G	\$B
+2.5	+47	+82	+28	+30.80	+26.22	N/A	N/A

• **Consignor: W & G Davis Livestock, Bay, AR**

• BW: 74; WW: 660; YW: 1,120

• A son of the total-performance and carcass sire, GAR Predestined. His dam is a solid producer from the Horner Program.

**29****WG DUKES FINAL ANSWER**

Birth Date: 3-20-2013

Bull 17563179

Tattoo: 0131

#SAV Final Answer 0035 [PDF]

**Tanner Final Answer 964Y**

+16713384 Kem 322 of Woodlawn

#BC 7022 Raven 7965

**Werner Dutchess 2469**

16578426 Sedgwicks Dutchess T264

#Sitz Traveler 8180

SAV Emulous 8145

#+SAF 598 Bando 5175

KEM 119 of Woodlawn

#BC Marathon 7022

OCC Blackbird 796F

#SAV 8180 Traveler 004 [PDF]

Sedgwicks Dutchess 22264

<b>CW</b>
+28
<b>MARB</b>
+49
<b>REA</b>
+47
<b>FAT</b>
+028

BEPD	WEPD	YEPD	MILK	\$W	\$F	\$G	\$B
+2.3	+57	+97	+23	+33.65	+40.55	+30.85	+75.85

• **Consignor: W & G Davis Livestock, Bay, AR**

• BW: 65; WW: 640; YW: 980

• A son of the second top-selling bull of a past Turner Farms bull sale. His dam is by BC Raven out of a daughter of Traveler 004.

• Top 20% WW, top 25% YW and \$F.

**30****DDA STRIKER 315** [DDP]

Birth Date: 2-24-2013

Bull 17637346

Tattoo: 315

#Mytty In Focus [PDF]

**WHS Limelight 64V**

16073564 #WHS Predestined Lass 77T

#Bon View New Design 878

**Dda Lady D 912**

16500885 Twin Pines Miss H6

#SAF Focus of ER

Mytty Countess 906

#GAR Predestined

#WHS 8180 Lass 14K

#B/R New Design 036

Bon View Gammer 85

#Nichols Extra H6

Twin Pines Maggie

<b>CW</b>
+45
<b>MARB</b>
+78
<b>REA</b>
+53
<b>FAT</b>
+017

BEPD	WEPD	YEPD	MILK	\$W	\$F	\$G	\$B
+2.4	+60	+108	+28	+32.72	+53.85	+38.47	+100.65

• **Consignor: Double D Angus, Carlisle, AR**

• This is a bull that has a power packed pedigree. His maternal brother was the second highest selling bull in the March Sale.

• This is an easy going bull with EPDs to back him up. This bull will add value to your herd.

• Top 3% \$B, top 5% YW and \$F, top 10% WW, CW, Marbling and \$QG, top 20% \$G.

**31****DDA LIGHTNING 312**

Birth Date: 2-23-2013

Bull 17637347

Tattoo: 312

#Mytty In Focus [PDF]

**WHS Limelight 64V**

16073564 #WHS Predestined Lass 77T

#Nichols Extra K205

**DDA Blackbird 803**

16213539 Shepherds Blackbird 153

#SAF Focus of ER

Mytty Countess 906

#GAR Predestined

#WHS 8180 Lass 14K

#Nichols Extra H6

Nichols Black Heiress F346

Shepherds Rainmaker 002

Shepherds Blackbird 309

<b>CW</b>
+43
<b>MARB</b>
+81
<b>REA</b>
+53
<b>FAT</b>
+016

BEPD	WEPD	YEPD	MILK	\$W	\$F	\$G	\$B
+2.0	+62	+108	+31	+36.50	+52.78	+39.76	+100.12

• **Consignor: Double D Angus, Carlisle, AR**

• This long, deep-bodied son of WHS Limelight has an excellent combination of growth and carcass values. He would be a great addition to anybody's herd.

• Top 3% \$B, top 5% WW and YW, top 10% CW, Marbling, \$F and \$QG, top 20% \$W, top 30% \$G.



## Connealy Forward

# 32

## DDA FINAL TIME 37

Birth Date: 2-19-2013

Bull 17640574

Tattoo: 37

Connealy Product 568

#GAR Retail Product

**Connealy Final Product**

Pride Fine of Conanga 566

**15848422** #Ebonista of Conanga 471

#Connealy Deep Canyon 454

DDA Easy Focus 709

Ebonisa of Conanga 5469

**DDA Miss Blackbird 1024**

#Mytty In Focus <sup>(DF)</sup>

**16708705** Hickory Hill Blackbird SA01

Donnell BLKBERRYF0040699 562

#Connealy Onward

Hickory Hill Blackbird 829

<b>CW</b>
N/A
<b>MARB</b>
N/A
<b>REA</b>
N/A
<b>FAT</b>
N/A

BEPD	WEPD	YEPD	MILK
+2.8	+62	+108	+30

\$W	\$F	\$G	\$B
+34.18	+52.78	N/A	N/A

• **Consignor: Double D Angus, Carlisle, AR**

• This powerful son of Final Product will enhance your herd with his muscular and masculine body style. He is in the top 10% of the breed in both WW and YW.

Take a good look at this bull.

• Top 5% WW and YW, top 10% \$F, top 30% \$W.

# 33

## DDA FAST FORWARD 33 <sup>[DDP]</sup>

Birth Date: 2-16-2013

Bull 17640503

Tattoo: 33

#Connealy Onward

#Connealy Lead On

**Connealy Forward**

Altune of Conanga 6104

**#15491633** Becky Lee of Conanga 74

#+GAR Grid Maker

#Bon View New Design 1407

Beckon Lee of Conanga 73

**CR Empress 5138**

#B/R New Design 036

**15228361** CR Empress N057

Bon View Pride 664

#VDAR Bando 701

CR Empress J008

<b>CW</b>
I+30
<b>MARB</b>
I+.50
<b>REA</b>
I+.73
<b>FAT</b>
I+.023

BEPD	WEPD	YEPD	MILK
+1.3	+46	+88	+34

\$W	\$F	\$G	\$B
+32.79	+34.36	+34.49	+81.47

• **Consignor: Double D Angus, Carlisle, AR**

• This is a calving-ease bull that is very well balanced, with an excellent pedigree to back him up.

• He is in the top 1% in Milk and top 5% for CED. He would make a great bull for heifers or cows.

• Top 5% CED, top 15% RE, top 30% \$G and \$B.

# 34

## DF BLACK CEDAR KID 224

Birth Date: 10-29-2012

Bull 17472971

Tattoo: 224

#CH Quantum 6247

#CH Quantum 3330

**Cole Creek Black Cedar 46P**

CH Blackbird 0136

**14496765** Cole Creek Clova Juanada 67

#AAR Windy Ridge 523

#GDAR Traveler 044

Cole Creek Clova Juanada 811

**DF Beulah 251D**

#DHD Traveler 6807

**14662822** #Leachman BC Beulah C3195

#GDAR Blackcap Lady 840

#Tehama Bando 155

Canyon Beulah 9157

<b>CW</b>
I+.20
<b>MARB</b>
I+.34
<b>REA</b>
I+.46
<b>FAT</b>
I+.023

BEPD	WEPD	YEPD	MILK
I+2.4	I+41	I+74	I+17

\$W	\$F	\$G	\$B
+24.05	+19.19	+26.76	+60.87

• **Consignor: Dunman Angus, Truman, AR**

• An outcross to everything in the sale. This bull is out of the popular sire Cole Creek Black Cedar 46P who is known for producing fertile easy keeping females.

• His 12-year-old dam is out of the great AI sire, GDAR Traveler 044 and Pathfinder Donor Dam Leachman BC Beulah C3195 of Tehama Bando 155.

**35****RRR BLACKCAP OBJECTIVE 2162**

Birth Date: 10-16-2012

Bull 17804980

Tattoo: 2162

#SS Traveler 6807 T510  
**SS Objective T510 OT26**  
 #13776378 SS Miss Rita R011 7R8

#DHD Traveler 6807  
 #SS Miss Hi Spade A114  
 SS Rito Rito R76 R011  
 SS Miss Ultress U56

S	D
CW	CW
+22	+36
MARB	MARB
+88	+60
REA	REA
+45	+58
FAT	FAT
-.024	-.004

#TC Total 410  
**RRR Blackcap Total 8026**  
 16315268 Springfield Blackcap 4049

#Bon View New Design 208  
 +TC Erica Eileen 2047  
 #Bon View New Design 878  
 +Springfield Blackcap 2647

	BE PD	WE PD	YE PD	MILK	\$W	\$F	\$G	\$B
S	+1.0	+69	+119	+29	+54.60	+64.39	+48.07	+88.59
D	+3.0	+54	+95	+24	+29.44	+39.45	+37.79	+91.26

• **Consignor: Rockin' Rock Ranch, Salem, AR**

- This bull is stacked with great genetics. He has growth, carcass and maternal qualities.
- He stacks Objective, TC Total and 878 through the great cow Springfield Blackcap 4049.

**36****BPAR RETAIL OBJECTIVE E5 BP1** [DDF]

Birth Date: 10-15-2012

Bull 17625668

Tattoo: BP15

#SS Traveler 6807 T510  
**SS Objective T510 OT26**  
 #13776378 SS Miss Rita R011 7R8

#DHD Traveler 6807  
 #SS Miss Hi Spade A114  
 SS Rito Rito R76 R011  
 SS Miss Ultress U56  
 #GAR Precision 1680  
 +GAR Ext 4927  
 #SS Traveler 6807 T510  
 GAR New Design 2609

CW	+25
MARB	+81
REA	+69
FAT	-.007

#GAR Retail Product  
**Bpar Caroline 510 E5**  
 +16815847 +GAR T510 Traveler 1892

	BE PD	WE PD	YE PD	MILK	\$W	\$F	\$G	\$B
	-.3	+55	+103	+30	+43.35	+49.65	+46.90	+89.05

• **Consignor: Busted P Ranch, Malden, MO**

- This bull has a great set of genetics. He is an Objective son out of a Retail Product dam that is out of the famed donor cow, GAR T510 Traveler 1892.
- Top 4% \$YG, top 10% RE, \$W and \$G, top 15% CED, YW, Marbling, \$F and \$QG, top 20% \$W.

**37****RDF02WWR37** [DDP]

Birth Date: 2-23-2012

Bull 17348034

Tattoo: 02Z

#+GAR New Design 5050  
**RDF 5050 Ambush 02W**  
 16503306 +OA GCC Miss Barbara H107

#B/R New Design 036  
 GAR Precision 706  
 #+B/R Ambush 28  
 Summitcrest Barbara 0H31  
 #Summitcrest Hi Flyer 3B18  
 WAFJ Band Elbadina 97  
 #Perry Power Design 715  
 PRL Barbara 106

CW	+25
MARB	+56
REA	+56
FAT	-.003

#RCC Preference  
**WR Pref 706 of 507**  
 15777646 WR Miss Power Line 507

	BE PD	WE PD	YE PD	MILK	\$W	\$F	\$G	\$B
	+1.7	+51	+96	+19	+29.79	+42.31	+37.95	+79.43

• **Consignor: R & D Farms, Dardanelle, AR**

- Excellent heifer bull, proven breeder, easy keeper, excellent growth and carcass traits.
- Top 20% \$G and \$YG, top 25% YW and \$F, top 35% CED.
- Will have complete BSE and Trich test.
- EPD's are based on enhanced DNA testing (Genomic Test).

**38****RRR FINAL PRIDE OF 5050 1132** [DDF]

Birth Date: 10-20-2011

Bull 17056063

Tattoo: 1132

#B/R New Design 036  
**GAR New Design 5050**  
 #+13728513 GAR Precision 706

#VDAR New Trend 315  
 B/R Blackcap Empress 76  
 #GAR Precision 1680  
 +GAR Ext 2114  
 #Sitz Traveler 8180  
 SAV Emuloso 8145  
 #JLB Exacto 416  
 Springfield Pride 4050

CW	+31
MARB	+73
REA	+87
FAT	-.011

#SAV Final Answer 0035 [PDF]  
**RRR Final Pride 8029**  
 16319474 +Springfiled Pride 2550

	BE PD	WE PD	YE PD	MILK	\$W	\$F	\$G	\$B
	+2.9	+55	+100	+30	+32.02	+45.59	+46.11	+94.94

• **Consignor: Rockin' Rock Ranch, Salem, AR**

- A proven son of GAR New Design 5050. You will be impressed with the volume and overall quality of this bull. His dam is by the legendary Final Answer of a daughter of the Sire Alliance Winner, JLB Exacto 416.
- Top 10% \$G, \$YG and \$B, top 15% Marbling and \$QG, top 20% YW and \$F, top 30% WW.



**Thomas Lucy 1041** - Famous grandam of Lot 39.

**39 EXG Lucy 6166 PPC** [DDP]  
 Birth Date: 9-18-2006 Cow +15799113 Tattoo: 6166

#Schurrtop MC <b>Schurrtop MC 2500</b> #14840227 Schurrtop RS 1413 2153	#Papa Euator 2928 Schurrtop 1483 9024 Brooks Schurr Trend Ryans Schurrtop 2125 #B/R New Design 036 Bon View Pride 664 #Emulation N Bar 5522 #Thomas Lucy 9083	<b>CW</b> +4 <b>MARB</b> +31 <b>REA</b> +17 <b>FAT</b> -064
---	--	--

#Bon View New Design 1407  
**Paws Up Lucy 2509**  
 +14260532 #Thomas Lucy 1041

BEPD	WEPD	YEPD	MILK	\$W	\$F	\$G	\$B
+5.3	+42	+76	+25	+18.97	+21.17	+32.47	+42.87

- **Consignor: Appalachian Cattle LLC, Somerville, TN**
- A daughter of the marbling sire, Schurrtop MC 2500 and out of an own daughter of the famous donor cow, Thomas Lucy 1041. 1041 has been a dominant cow in the Thomas Program.
- Few daughters of this great cow are left in the breed. Pasture exposed to Appalachian 6807 U85.
- Safe and should calve before sale day.

**40 GOLD HILL NORTHERN MISS 8428** [DDP]  
 Birth Date: 8-28-2008 Cow +16613429 Tattoo: 8428

#B/R New Design 036 <b>GAR Predestined</b> #13395344 #+GAR Ext 4206	#VDAR New Trend 315 B/R Blackcap Empress 76 #N Bar Emulation EXT +GAR 6807 Traveler 1432 #N Bar Emulation EXT Leachman Erica 0025 #Finks 5522-6148 +Finks Miss 4168 8130 5204	<b>CW</b> +35 <b>MARB</b> +1.12 <b>REA</b> +40 <b>FAT</b> +033
---	--	---

#+Leachman Right Time  
**Finks Miss 3101 1124 RT**  
 +14676541 +Finks Miss 1124 4168 6148

BEPD	WEPD	YEPD	MILK	\$W	\$F	\$G	\$B
+2.6	+47	+84	+24	+34.96	+28.74	+44.39	+96.44

- **Consignor: Appalachian Cattle LLC, Somerville, TN**
- A high-volume, attractive daughter of the carcass sire, GAR Predestined and out of a high-quality donor female by Leachman Right Time.
- Top 1% Marbling and \$QG, top 2% \$B, top 15% CW, top 20% \$W.
- LOT 40A SEX: Heifer DOB: 9-19-14 SIRE: Connealy Final Product

**41 A F MISS LINDA HD 679**  
 Birth Date: 12-27-2013 Cow 17834657 Tattoo: 679

#SydGen CC&7 <b>Hoover Dam</b> 16124994 #Erica of Ellston C124	#+SAF Connection SydGen Forever Lady 4087 #TC Gridiron 258 Erica of Ellston V65 #SAV 8180 Traveler 004 [PDF] Bar P Blackbird 0651 #+Boyd New Day 8005 LF Miss Hi Piere 83	<b>CW</b> N/A <b>MARB</b> N/A <b>REA</b> N/A <b>FAT</b> N/A
--	--	--

AF 004 Enterprize 514  
**AF Linda's Duke's 224**  
 17020801 AF Linda's New Day 154

BEPD	WEPD	YEPD	MILK	\$W	\$F	\$G	\$B
+1.3	+57	+96	+26	+37.45	+39.24	N/A	N/A

- **Consignor: Asher Farms, Pomona, MO**
- Right out of the Asher Show String, halter broke, just check her out!
- Her pedigree speaks for itself.
- A daughter of the highly popular Hoover Dam. Her dam combines 004 and New Day. This one has the class you are looking for. Top 15% WW and \$W, top 20% YW, top 25% \$F.
- Sells open.



## Connealy Irish 0204

### 42 A F Miss IRISH 678

Birth Date: 12-18-2013

Cow 17834656

Tattoo: 678

Connealy Wrangler  
**Connealy Irish 0204**  
 16761484 #Black Crest of Conanga 5640

#Connealy Forward  
**AF Forward's Lass 618**  
 17415511 GPN Lass 8N11

Connealy Cowboy  
 Kelly of Conanga 577  
 #Mytty In Focus [RF]  
 Black Cresha of Conanga 3314  
 #Connealy Onward  
 Becky Lee of Conanga 74  
 #+HSAF Bando 1961  
 GPN Lass 4N8

CW
N/A
MARB
N/A
REA
N/A
FAT
N/A

BEPD	WEPD	YEPD	MILK	\$W	\$F	\$G	\$B
+1.0	+48	+93	+23	+28.85	+39.88	N/A	N/A

- **Consignor: Asher Farms, Pomona, MO**
- A real cow prospect with a stacked pedigree, the real deal here. She combines Connealy Irish, Mytty In Focus, Connealy Forward and Bando 1961.
- Top 15% CED, top 25% \$F and top 30% YW.
- Sells open, halter broke.

### 43 A F DUKE'S GLENDA 623

Birth Date: 5-9-2012

Cow 17415520

Tattoo: 623

#SAV 8180 Traveler 004 [RF]  
**AF 004 Enterprize 514**  
 15998799 Bar P Blackbird 0651

#+Boyd New Day 8005  
**AF Glenda's New Day 160**  
 15763798 WRR Lady Design 001

#Sitz Traveler 8180  
 +Boyd Forever Lady 8003  
 #+Rito 9M9 of 2036 Scotch Cap  
 Bar P Star 0264  
 #AAR New Trend  
 SVF Forever Lady 57D  
 #Bon View New Design 878  
 WRR Lady Power 003

CW
N/A
MARB
N/A
REA
N/A
FAT
N/A

BEPD	WEPD	YEPD	MILK	\$W	\$F	\$G	\$B
+4.2	+58	+91	+18	+31.78	+32.23	N/A	N/A

- **Consignor: Asher Farms, Pomona, MO**
- A fancy bred heifer and one of the first Duke daughters we have sold. This heifer is right from the heart of the Asher herd.
- Her calf by Safeguard should be a great one. Safe in calf to PA Safeguard 021.
- You will like this pair.

### 44 BPAR LADY JAYE 16L BP32

Birth Date: 2-14-2013

Cow 17566897

Tattoo: BP32

Connealy Consensus  
**Connealy Consensus 3191 718**  
 +17073447 #Executa of Conanga 939

#+SAV Bismarck 5682 [RF]  
**ACF Lady Jaye 0060**  
 16675141 ACF Lady Jaye 7001

#KMK Alliance 6595 187  
 Blinda of Conanga 004  
 #Jauer 353 Traveler 589 27  
 #Exec of Conanga 6940  
 #+GAR Grid Maker  
 SAV Abigale 0451  
 #+EXAR New Look 2971  
 +BAAR USA Lady Jaye 5047

CW
I+33
MARB
I+40
REA
I+.78
FAT
I-.016

BEPD	WEPD	YEPD	MILK	\$W	\$F	\$G	\$B
-.7	+65	+105	+27	+48.05	+47.10	+34.26	+84.92

- **Consignor: Busted P Ranch, Malden, MO**
- Strong, strong pedigree here. She is a fancy daughter of Consensus 3191 718. Her dam is a Bismarck daughter from the Lady Jaye family and traces to BAAR USA Lady Jaye 5047.
- Top 1% \$W, top 3% WW, top 5% \$YG, top 10% CED, BW and YW, top 15% RE and \$F, top 30% \$B.
- Sells open.





## SAV Bismarck 5682

# 45

## BPAR JOANIE 012 BP17

Birth Date: 11-2-2012

Cow 17511596

Tattoo: BP17

#+GAR Grid Maker  
**SAV Bismarck 5682** (PDF)  
 #+15109865 SAV Abigale 0451

#TC Rito 416  
**Joanie 416 9116 of J&G 012**  
**16867040** Bpar Joanie 9126 9116

#GDAR Traveler 044  
 GAR Precision 2536  
 #Schoenes Fix It 826  
 SAV Abigale 6062  
 #+Rito 112 of 2536 Rito 616  
 #+TC Chloe 2056  
 #WAR Alliance 9126 6006  
 +SFI Joanie L42

<b>CW</b>
N/A
<b>MARB</b>
N/A
<b>REA</b>
N/A
<b>FAT</b>
N/A

BE PD	WE PD	YE PD	MILK
+1.5	+59	+100	+26

\$W	\$F	\$G	\$B
+37.70	+43.51	N/A	N/A

- **Consignor: Busted P Ranch, Malden, MO**
- A high-volume bred heifer by Bismarck and out of a female from the great Joanie family of females.
- The Joanie family is well known in Missouri. Top 10% WW, top 15% YW and \$W, top 20% \$F.
- Will calve by sale time to 16L.

# 46

## BPAR JOANIE 759 EB6 [DDF]

Birth Date: 9-12-2012

Cow +17463186

Tattoo: EB6

#CRA Bextor 872 5205 608  
**TC Aberdeen 759**  
 #15840414 #+TC Blackbird 4034

#B/R New Design 036  
**SFI Joanie L42**  
 +13898867 MB Joanie Ext 3605

#BAR Ext Traveler 205  
 Cra Lady Jaye 608 498 S Easy  
 #Bon View New Design 208  
 TC Blackbird 1013  
 #VDAR New Trend 315  
 B/R Blackcap Empress 76  
 #N Bar Emulation EXT  
 #MB Joanie 8E8 1627

<b>CW</b>
+27
<b>MARB</b>
+39
<b>REA</b>
+72
<b>FAT</b>
+017

BE PD	WE PD	YE PD	MILK
+3.6	+42	+79	+28

\$W	\$F	\$G	\$B
+24.26	+24.89	+31.17	+73.97

- **Consignor: Busted P Ranch, Malden, MO**
- A daughter of one of the most popular Genex AI sires, TC Aberdeen. Like all Aberdeen daughters, this one is attractive and correct.
- Strong maternal traits here. She is another female from the great Joanie family. Her dam is a BPAR donor female.
- Bred AI on 1-5-14 to WHS Limelight 64V.
- Should calve before sale day.

# 47

## BPAR LADY JAY 16L P20

Birth Date: 10-14-2013

Cow 17725728

Tattoo: P20

Connealy Consensus  
**Connealy Consensus 3191 718**  
 +17073447 #Executa of Conanga 939

+R/M Ironstone 4047  
**Bpar Lady Jaye 4047 E923**  
 +17031827 +BAAR USA Lady Jaye 486

#KMK Alliance 6595 187  
 Blinda of Conanga 004  
 #Jauer 353 Traveler 589 27  
 #Exec of Conanga 6940  
 #CA Future Direction 5321  
 B/R Ruby of Tiffany 5144  
 #BAR Ext Traveler 205  
 Cra Lady Jaye 608 498 S Easy

<b>CW</b>
+29
<b>MARB</b>
+45
<b>REA</b>
+77
<b>FAT</b>
-032

BE PD	WE PD	YE PD	MILK
+2.0	+61	+100	+21

\$W	\$F	\$G	\$B
+45.84	+42.48	+38.05	+84.22

- **Consignor: Busted P Ranch, Malden, MO**
- An attractive daughter of Consensus 3191 718 and a young female that should make a top cow. She descends from the great Lady Jaye family.
- Top 2% \$W, top 10% WW and \$YG, top 20% YW, RE and \$B, top 25% \$F, top 30% CW and \$G.
- Sells open.



48

**BPAR ENAMEL GAL 7120 B37**

Birth Date: 2-24-2014

Cow 17894020

Tattoo: B37

Connealy Tobin  
**Connealy Confidence 0100**  
 16761479 Becka Gala of Conanga 8281

+Rito 416 of 2536 6807

**Fox Run Enamel Gal 7120**  
 15745438 Enamel Gal 225

#Bon View New Design 208  
 Delia of Conanga 667  
 #Connealy Thunder <sup>(PDF)</sup>  
 Becka Lee of Conanga 37  
 #DHD Traveler 6807  
 GAR Precision 2536  
 #+GDAR SVF Traveler 234D  
 Enamel Gal 853

<b>CW</b>
+21
<b>MARB</b>
+34
<b>REA</b>
+89
<b>FAT</b>
-005

BEPD	WEPD	YEPD	MILK
+6	+46	+81	+21

\$W	\$F	\$G	\$B
+36.40	+25.45	+33.80	+69.17

• **Consignor: Busted P Ranch, Malden, MO**

- Just like all Connealy Confidence females, this one has style and balance with plenty of thickness. His daughters have been sale-toppers at Maplecrest Farms and Boyd Beef Cattle, just to name a couple.
- Top 10% RE, top 15% CED, top 20% BW and \$W.
- Sells open. Halter broke.

49

**BPAR FOREVER LADY 9026 B32**

Birth Date: 2-24-2014

Cow 17894021

Tattoo: B32

#Connealy Onward  
**Werner War Party 2417**  
 +16004857 +BAAR USA Lady Jaye 489

#SAV Net Worth 4200

**OBCC Forever Lady 9026**  
 16411402 Fox Run Forever Lady 6084

#Connealy Lead On  
 Altune of Conanga 6104  
 #BAR Ext Traveler 205  
 Cra Lady Jaye 608 498 S Easy  
 #SAV 8180 Traveler 004 <sup>(PDF)</sup>  
 +SAV May 2410  
 #BR Midland  
 Pauls Forever Lady 271

<b>CW</b>
N/A
<b>MARB</b>
N/A
<b>REA</b>
N/A
<b>FAT</b>
N/A

BEPD	WEPD	YEPD	MILK
+2.7	+59	+108	+32

\$W	\$F	\$G	\$B
+31.95	+54.38	N/A	N/A

• **Consignor: Busted P Ranch, Malden, MO**

- A powerful young female with a great phenotype. War Party progeny are gentle, have added length and growth.
- This one is out of a high-volume Net Worth dam out of a Midland daughter.
- Top 4% \$F, top 5% YW, top 10% \$WW.
- Sells open. Halter broke.

50

**CAMPTOWN DEBORAH A05**

Birth Date: 3-5-2013

Cow 17597698

Tattoo: A05

Limestone Darkhorse U322  
**Limestone Darkhorse X104**  
 +16837157 +Rudow's Too Hot 722

#SydGen CC&amp;7

**BoPat Deborah 125**  
 16905364 BoPat Deborah 7130

#BC 7022 Raven 7965  
 PAF Tridge 5768  
 DCC New Look 101  
 Cane Ridge Lucy 2270L

#+SAF Connection  
 SydGen Forever Lady 4087  
 #+B/R New Frontier 095  
 BoPat Deborah 3148

S	D
<b>CW</b>	<b>CW</b>
+18	+42
<b>MARB</b>	<b>MARB</b>
+36	+41
<b>REA</b>	<b>REA</b>
+72	+55
<b>FAT</b>	<b>FAT</b>
-012	-043

BEPD	WEPD	YEPD	MILK
S +2.6	+47	+82	+16
D +2.5	+47	+88	+30

\$W	\$F	\$G	\$B
+29.33	+26.22	+33.97	+65.58
+28.76	+33.86	+33.25	+91.70

• **Consignor: Camp Town Angus, Paragould, AR**

- An attractive young bred heifer by Darkhorse, and out of a female from the BoPat herd in Tennessee that combines CC&7 and 095.
- Bred AI on 5-2-14 to Buford Bluestem 9974 then pasture exposed to Buford Casanova Y904 from 5-16-14 to 7-22-14. Examined safe to AI.

51

**CAMPTOWN QUEEN MOTHER A06**

Birth Date: 4-18-2013

Cow 17597697

Tattoo: A06

Limestone Darkhorse U322  
**Limestone Darkhorse X104**  
 +16837157 +Rudow's Too Hot 722

B/R New Day 454

**BoPat Queen Mother 137**  
 16906313 BoPat Queen Mother 774

#BC 7022 Raven 7965  
 PAF Tridge 5768  
 DCC New Look 101  
 Cane Ridge Lucy 2270L

#+Boyd New Day 8005  
 B/R Ruby 1224  
 B/R New Design 323-342  
 BoPat Queen Mother 230

S	D
<b>CW</b>	<b>CW</b>
+18	+30
<b>MARB</b>	<b>MARB</b>
+36	+70
<b>REA</b>	<b>REA</b>
+72	+74
<b>FAT</b>	<b>FAT</b>
-012	-013

BEPD	WEPD	YEPD	MILK
S +2.6	+47	+82	+16
D +1.4	+48	+85	+23

\$W	\$F	\$G	\$B
+29.33	+26.22	+33.97	+65.58
+31.76	+29.52	+44.30	+90.76

• **Consignor: Camp Town Angus, Paragould, AR**

- Another deep-bodied Darkhorse bred heifer, and this one out of a daughter of the high Marbling sire, B/R New Day 454.
- Bred AI on 5-2-14 to Buford Bluestem 9974 then pasture exposed to Buford Casanova Y904 from 5-16-14 to 7-22-14. Examined safe.

**52****CAMPTOWN QUEEN MOTHER A07**

[DDP]

Birth Date: 5-10-2013

Cow 17597696

Tattoo: A07

Limestone Darkhorse U322  
**Limestone Darkhorse X104**  
 +16837157 +Rudow's Too Hot 722

+BoPat Ambush 28-8164  
**BoPat Queen Mother 1125**  
 16901127 BoPat Queen Mother 7138

#BC 7022 Raven 7965  
 PAF Tridge 5768  
 DCC New Look 101  
 Cane Ridge Lucy 2270L

#+B/R Ambush 28  
 B/R Lantz Blackcap 49  
 +B/R Lead On 4335  
 BoPat Queen Mother 298

S	D
CW	CW
+18	N/A
MARB	MARB
+36	N/A
REA	REA
+72	N/A
FAT	FAT
-.012	N/A

	BEPD	WEPD	YEPD	MILK	\$W	\$F	\$G	\$B
S	+2.6	+47	+82	+16	+29.33	+26.22	+33.97	+65.58
D	1+1.9	1+48	1+85	1+20	+29.39	+29.52	N/A	N/A

• **Consignor: Camp Town Angus, Paragould, AR**

- The three Darkhorse daughters would make a welcome addition to any herd. This one is out of one of the top female lines in the BoPat program, the Queen Mother line.
- Pasture exposed from 6-1-14 to 7-22-14 to Buford Casanova Y904, safe and should calve in April, 2015.

**53****CHECKERHILL FOREVER LADY 204**

[DDF]

Birth Date: 3-1-2012

Cow 17459432

Tattoo: 204

#Hero 6267 of RR 2418  
**HA Image Maker 0415**  
 #+13739532 HA Rito Blackcap 9038

#Mytty In Focus [DDF]  
**KAR Forever Lady Kem 8190**  
 16315093 KM Forever Lady KEM 5151

#RR Hero 6267  
 RR Everelda Entense 0413  
 H 96 Rito 2100 7371  
 H 96 Blackcap 3835  
 #SAF Focus of ER  
 Mytty Countess 906  
 #+GAR Integrity  
 KM Forever Lady 2283

CW
N/A
MARB
N/A
REA
N/A
FAT
N/A

	BEPD	WEPD	YEPD	MILK	\$W	\$F	\$G	\$B
	1+4	1+54	1+89	1+30	+39.57	+31.66	N/A	N/A

• **Consignor: Checkerhill Angus, West Plains, MO**

- This 2-year-old Image Maker daughter is very impressive. Sells with a 5-26-14 heifer calf sired by the Hoover Dam bull we sold as the 2nd high-seller at \$5,000 in the Spring 2014 NEA Angus Sale!
- AI bred on 8-30-14 to VAR Reserve!
- LOT 53A      SEX: Heifer      DOB: 5-26-14      SIRE: Hoover Dam

**54****CHECKERHILL LUCILLE X22**

Birth Date: 9-17-2010

Cow 16913411

Tattoo: X22

#+HA Power Alliance 1025  
**Connealy Stimulus 8419**  
 16205004 Black Creesa of Conanga 5332

#Bon View New Design 878  
**Checkerhill Lucille R10**  
 15286711 Bubs Lucille H803

#Sitz Alliance 6595  
 +HA Rito Lady 4167  
 #+GAR Grid Maker  
 Black Crust of Conanga  
 #B/R New Design 036  
 Bon View Gammer 85  
 #Nichols Formula B42  
 +Ankony Lucy 1N42

CW
1+22
MARB
1+.67
REA
1+.34
FAT
1-.027

	BEPD	WEPD	YEPD	MILK	\$W	\$F	\$G	\$B
	+0	+47	+80	+30	+36.62	+23.72	+41.73	+78.44

• **Consignor: Checkerhill Angus, West Plains, MO**

- Great young Connealy Stimulus daughter.
- Sold her last calf private treaty for \$3,800 at 2 1/2 months old for a show heifer.
- Shown by Lindsay Anderson, Conway, MO at MO State Fair and Junior Nationals!
- AI bred to VAR Reserve on 3-20-14. Due to calve 12-29-14!

**Connealy Stimulus 8419**



## Buford Blue Stem 9974

# 55

# CHECKERHILL BLUE BLOOD 326

Birth Date: 10-21-2013

Cow 17834140

Tattoo: 326

#SAV Net Worth 4200

**Buford BlueStem 9974**

16543415 +LCC Erica NG724

#TC Aberdeen 759

**Checkerhill Blue Blood X13**

17004076 KAR Blueblood Lady 8128

#SAV 8180 Traveler 004 (RF)

+SAV May 2410

#CA Future Direction 5321

LCC Erica LG075

#CRA Bextor 872 5205 608

#+TC Blackbird 4034

#Connealy Forward

KM Blueblood Lady 6140

CW

N/A

MARB

N/A

REA

N/A

FAT

N/A

BE PD	WE PD	YE PD	MILK
+1.5	+52	+93	+29

\$W	\$F	\$G	\$B
+34.14	+37.84	N/A	N/A

• **Consignor: Checkerhill Angus, West Plains, MO**

- Awesome Buford Bluestem heifer.
- Deep, thick and massive. Brood cow deluxe!
- Calving ease and a good set of EPDs.
- Sells open!

# 56

# COPELAND RITA 4115

Birth Date: 4-2-2014

Cow +17833307

Tattoo: 4115

#+GAR Grid Maker

**SAV Bismarck 5682** (RF)

#+15109865 SAV Abigale 0451

#+OCC Emblazon 854E

**Limestone Rita T101**

+15828110 +GAR New Design 6231

#GDAR Traveler 044

GAR Precision 2536

#Schoenes Fix It 826

SAV Abigale 6062

#DHD Traveler 6807

Dixie Erica of CH 1019

#B/R New Design 036

+GAR Precision 1928

CW

1+12

MARB

1+.47

REA

1+.77

FAT

1-.021

BE PD	WE PD	YE PD	MILK
1+.6	1+.51	1+.85	1+.20

\$W	\$F	\$G	\$B
+39.61	+28.05	+40.37	+63.62

• **Consignor: Copeland Angus Ranch, Paragould, AR**

- Rita 4115 is a nicely balanced April heifer by of SAV Bismarck 5682 and T101, a donor that we flushed several times and as you can tell they are all very nice!
- We wouldn't normally be getting rid of this one, and we still wouldn't if we hadn't had such good luck with heifers out of our T101 embryo pregnancies.
- This is a really good opportunity to get in on a daughter out of such a good donor cow. Call us crazy if you will, but we want to offer you some of our best genetics that just plain work.
- Sells open.



**Limestone Rita T101** - Donor dam of Lot 56.

**Werner Emblynette 1190 -**  
Donor dam of Lot 57.



## 57 COPELAND EMBLYNETTE 4019

Birth Date: 5-1-2014

Cow 17832891

Tattoo: 4019

+Werner War Party 2417

**Werner War Party 1472**

+17236833 GCC Dixie Erica 7125

SAV Iron Mountain 8066

**Werner Emblynette 1190**

+17276187 +Champion Hill EMBLYNETTE6535

#Connealy Onward

+BAAR USA Lady Jaye 489

#OCC Missing Link 830M

+OCC Dixie Erica 620N

#TC Gridiron 258

SAV Madame Pride 3249

#SAV 8180 Traveler 004 <sup>[PDF]</sup>

+Champion Hill EMBLYNETTE4299

<b>CW</b>
+39
<b>MARB</b>
+44
<b>REA</b>
+63
<b>FAT</b>
+040

BEPD	WEPD	YEPD	MILK	\$W	\$F	\$G	\$B
+1.1	+63	+110	+24	+48.67	+55.01	+27.54	+84.77

• **Consignor: Copeland Angus Ranch, Paragould, AR**

- Emblynette 4019 is a really unique made heifer from the infamous Champion Hill Emblynette 6535, which in turn is a full sister to SAV Predominant, and out of Werner War Party 1472 which is a lead herd sire for Werner Angus, Cordova, IL.
- This heifer really excites us as a potential show prospect down the road. She could be a cool prospect and a killer bred. If she takes after her mother, we are in on this heifer. • Mark this young May heifer down and check her out in November! • Sells open.

## 58 JACS FOREVER LADY 7036

Birth Date: 1-23-2007

Cow 15980027

Tattoo: 7036

#Sitz Traveler 8180

**SAV 8180 Traveler 004** <sup>[PDF]</sup>

#13512009 +Boyd Forever Lady 8003

#+Leachman Right Time

**JACS Forever Lady 4064**

14714386 Rocky Mt Forever Lady 918

#GDAR Traveler 71

Sitz Everelda Entense 1137

#AAR New Trend

SVF Forever Lady 57D

#N Bar Emulation EXT

Leachman Erica 0025

+Rocky MT Vision 708

+Rocky MT Forever Lady 716

<b>CW</b>
+39
<b>MARB</b>
+11
<b>REA</b>
+12
<b>FAT</b>
+030

BEPD	WEPD	YEPD	MILK	\$W	\$F	\$G	\$B
+3.7	+50	+91	+24	+30.60	+36.24	+6.83	+62.51

• **Consignor: Copeland Angus Ranch, Paragould, AR**

- This Jac's bred cow comes from the infamous Forever Lady cow family while also being out of one of the female making bulls in the breed, SAV 8180 Traveler 004.
- This cow is still in the prime of her life. She still looks like a young, good-producing cow with the most beautiful udder underneath her. The proof in what she can produce is standing beside her. • This split-off heifer calf screams longevity and brood cow. • Bred AI to SAV Thunderbird 9061 on 6-22-14, an exciting sire that has a BW EPD of +.2 and YW +121! • Pasture exposed to our herd sire Buford Emblazon Z898 from 7-1-14 to 8-15-14. Her calf is the split-off heifer that we think so highly of. She is out of a son of Jac's Ranch, Bush Angus' and Vin-Mar Cattle Co.'s lead herd sire, Vin-Mar O'Reilly Factor.

• LOT 58A      SEX: Heifer      DOB: 4-1-14      SIRE: Jacs Factor 2024

## 59 L S A F CHEYENNE OF 1961 <sup>[DDF]</sup>

Birth Date: 7-1-2008

Cow 16067110

Tattoo: 1826

#+SAF 598 Bando 5175

**HSAF Bando 1961**

#+13896250 +JKS Miss Cheyenne 196

#SAV 8180 Traveler 004 <sup>[PDF]</sup>

**Champion Hill Cheyenne 5486**

+15391514 +Covells Cheyenne 0020

#Bon View Bando 598

+SAF Royal Lass 1002

#N Bar Emulation EXT

+Magic Meadow Miss Cheyenne

#Sitz Traveler 8180

+Boyd Forever Lady 8003

#+SAF 598 Bando 5175

+Champion Hill Cheyenne 935

<b>CW</b>
+48
<b>MARB</b>
+30
<b>REA</b>
+11
<b>FAT</b>
+043

BEPD	WEPD	YEPD	MILK	\$W	\$F	\$G	\$B
+3.9	+53	+92	+24	+34.09	+36.03	+11.65	+75.35

• **Consignor: Copeland Angus Ranch, Paragould, AR**

- Here is a beautiful daughter of Bando 1961 and a "004" cow. Big-bodied, attractive, excellent milking female that raises a big calf every year. Her last year's bull calf went to Wann Ranch, OK. • Bred AI 1-4-14 to GAR Composure for a fall calf. A Gardiner bred sire with an EPD spread of BW -1.3 to YW +111 and \$B +98. • With his numbers, if it's a bull, he could be a herd changer and a heifer could raise a herd sire. Buy here with confidence.

**60****BLACK GOLD BLACKBIRD 8007**

Birth Date: 2-10-2008

Cow +15975165

Tattoo: 8007

#BC Marathon 7022  
**BC 7022 Raven 7965**  
 #15034593 OCC Blackbird 796F

#GAR Precision 1680  
**Daltons Blackbird 1262**  
 +14024399 OCC Blackbird 833E

OCC Kirby 633K  
 Gibbet Hill Mignonne E37  
 #OCC Bonanza 880B  
 OCC Blackbird 779A  
 #Tehama Bando 155  
 9J9 GAR 856  
 #DHD Traveler 6807  
 OCC Blackbird 778A

<b>CW</b>
+31
<b>MARB</b>
+35
<b>REA</b>
+65
<b>FAT</b>
-.040

BE PD	WE PD	YE PD	MILK	\$W	\$F	\$G	\$B
+3.2	+44	+82	+19	+23.10	+27.68	+33.28	+80.93

- **Consignor: Copeland Angus Ranch, Paragould, AR**
- If you just want a really good looking, practical type of Angus cow look in here.
- This six-year-old daughter of the popular and proven BC Raven 7965 was produced from the J&J Cattle Company donor Daltons Blackbird 1262.
- This female combines that soft, easy doing rib shape with a really long and feminine front end to her.
- She is one that can produce some beautiful offspring, and could have her best one to date by the \$57,500 Buford Meatwagon, Al'd 1-27-14. It's females like this that just flat get the job done!

**61****CBF THOMAS CAROL 3043**

Birth Date: 12-15-2013

Cow 17695131

Tattoo: 3043

#SS Objective T510 OT26  
**CBF Objective 5010**  
 16708726 Rubles Forever Lady T246

+MtnMeadow Beefmaker Too  
**Thomas Carol 71069**  
 15829242 +Thomas Carol 4984

#SS Traveler 6807 T510  
 SS Miss Rita R011 7R8  
 #GAR Predestined  
 +Birkgen Forever Lady 1602  
 #CA Future Direction 5321  
 +Boyd Forever Lady 7120  
 #+GAR Expectation 4915  
 Thomas Carol 1246

<b>CW</b>
N/A
<b>MARB</b>
N/A
<b>REA</b>
N/A
<b>FAT</b>
N/A

BE PD	WE PD	YE PD	MILK	\$W	\$F	\$G	\$B
+2.4	+53	+92	+33	+34.12	+36.03	N/A	N/A

- **Consignor: Cross Brothers Farm, Paragould, AR**
- This is the first of three half-sisters by an Objective son and out of three of our strongest cow families.
- This one from the great Thomas Carol family and traces to the \$58,000 Thomas Carol 1246. Top 30% WW, YW and \$W.
- Sells open.

**62****CBF OBJECTIVE 9713** [DDF]

Birth Date: 12-14-2013

Cow 17695130

Tattoo: 9713

#SS Objective T510 OT26  
**CBF Objective 5010**  
 16708726 Rubles Forever Lady T246

#GAR Predestined  
**GAR Predestined 2097**  
 +15823191 GAR Retail Product 1484

#SS Traveler 6807 T510  
 SS Miss Rita R011 7R8  
 #GAR Predestined  
 +Birkgen Forever Lady 1602  
 #B/R New Design 036  
 #+GAR Ext 4206  
 #GAR Retail Product  
 GAR T510 Traveler 1042

<b>CW</b>
N/A
<b>MARB</b>
N/A
<b>REA</b>
N/A
<b>FAT</b>
N/A

BE PD	WE PD	YE PD	MILK	\$W	\$F	\$G	\$B
+2.7	+55	+97	+25	+31.24	+41.58	N/A	N/A

- **Consignor: Cross Brothers Farm, Paragould, AR**
- A half-sister to Lots 61 and 63.
- On the dam's side she combines Predestined and Retail Product, two of the great bulls ever in the Gardiner Angus Ranch Program. Top 20% YW and \$F, top 25% WW.
- Sells open.

**63****CBF ERISKAY 5913**

Birth Date: 12-10-2013

Cow 17695129

Tattoo: 5913

#SS Objective T510 OT26  
**CBF Objective 5010**  
 16708726 Rubles Forever Lady T246

#GAR Predestined  
**CBF Eriskay 59**  
 16418799 Clearwater Eriskay J 1368

#SS Traveler 6807 T510  
 SS Miss Rita R011 7R8  
 #GAR Predestined  
 +Birkgen Forever Lady 1602  
 #B/R New Design 036  
 #+GAR Ext 4206  
 #GAR Precision 1680  
 #Clearwater Eriskay J 1433

<b>CW</b>
N/A
<b>MARB</b>
N/A
<b>REA</b>
N/A
<b>FAT</b>
N/A

BE PD	WE PD	YE PD	MILK	\$W	\$F	\$G	\$B
+3.2	+46	+84	+27	+26.77	+29.23	N/A	N/A

- **Consignor: Cross Brothers Farm, Paragould, AR**
- Half-sister to Lots 61 and 62.
- This 5010 daughter traces on her bottom side to Clearwater Eriskay J 1368, a highly productive female in the Cross herd.
- Sells open.



**64****BUBS Miss U A11**

Birth Date: 3-17-2013

Cow 17717756

Tattoo: A11

BUBS Tom Tom W02  
**BUBS Hoss X99**  
**17015843** BUBS Kiss A Me U80  
 BUBS Wyatt Earp 603  
**BUBS Miss U W20**  
**16371716** BUBS Miss U R13

#+HA Image Maker 0415  
 BUBS Blackbird S28  
 #Mytty In Focus [RF]  
 BUBS Kiss A Me R4  
 Cooley La Sorda 3122  
 +Bubs Zena J35  
 +Bubs Don Carlo J76  
 +Bubs Miss U H851

CW
N/A
MARB
N/A
REA
N/A
FAT
N/A

BE PD	WE PD	YE PD	MILK
+1.4	+57	+95	+21

\$W	\$F	\$G	\$B
+35.99	+37.92	N/A	N/A

• **Consignor: EAE Cattle, Paragould, AR**

- This deep-bodied broody heifer goes back to the productive and fertile BUBS Miss U cow family.
- She is in the top 15% WW and top 20% YW and \$W percentile.
- Blood tested safe in calf to PA Safeguard 021.
- His EPDs are +1.3 BW, +67 WW, +117 YW, +34 MILK, +49.79 \$W, +62.65 \$F, +52.58 \$G, +114.05 \$B.
- Due 2-17-15.

**65****MARTENS POWER LASS 312**

Birth Date: 2-17-2005

Cow 15202232

[DDP]

Tattoo: 312

#Bon View New Design 878  
**MAF New Design B235**  
**14386365** MAF Marnest Blackbird 0301  
 ALS Drover 9058  
**AS Power Lass 203**  
**14060801** Power Lass 827 MM

#B/R New Design 036  
 Bon View Gammer 85  
 #Sitz Traveler 6802  
 MAF Marnest Blackbird 4105  
 Sedgwicks 1483 Drover  
 ALS Mariah Doll 9024  
 MA Marriott 205  
 Power Lass 220 MM

CW
N/A
MARB
N/A
REA
N/A
FAT
N/A

BE PD	WE PD	YE PD	MILK
+1.1	+31	+59	+14

\$W	\$F	\$G	\$B
+20.93	+5.98	N/A	N/A

• **Consignor: Foster Angus Ranch, Paragould, AR**

- A very productive cow that has proven herself in the Foster herd. Pay close attention to her heifer calf.
- Top 25% BW.
- Lot 65A      SEX: Heifer      DOB: 9-5-14      SIRE: Tanner Final Answer 964Y

**66****LENA ROYAL LASS T123**

Birth Date: 11-3-2007

Cow 16067986

[CAF-DDF]

Tattoo: T123

#B/R New Design 036  
**Lena GW Prime Design L300**  
**14313677** +Gdar SVF Forever Lady 136D  
 #Bon View Bando 598  
**LENA Royal Lass P250**  
**+14959252** +SAF Royal Lass 4031

#VDAR New Trend 315  
 B/R Blackcap Empress 76  
 #GT Maximum  
 +GDAR Forever Lady 718  
 #Tehama Bando 155  
 #Bon View Dora 56  
 #VDAR New Trend 315  
 +SAF Royal Lass 2086

CW
+24
MARB
+37
REA
+25
FAT
-.031

BE PD	WE PD	YE PD	MILK
+3.5	+38	+65	+16

\$W	\$F	\$G	\$B
+19.58	+9.81	+30.08	+69.38

• **Consignor: Fulper Angus Farm, Booneville, MS**

- A high-volume, productive cow. She represents some of the best from the Lena Farms program.
- Her dam is out of the famed donor female SAF Royal Lass 4031, the great-grandam of BR Midland.
- Bred AI on 6-12-14 to SS Objective T510 OT26.
- LOT 66A      SEX: Bull      DOB: 2-8-14      SIRE: EXAR Upshot 0562B

**67****CROW PRECISELY 39WS**

Birth Date: 4-25-2006

Cow 15641835

[AMF-DDF-NHF]

Tattoo: 39WS

#+PVF New Horizon 001  
**WR Patton Verizon 303**  
**14438216** Rocky MT Beauty 836  
 #White Oak Precise 6002  
**BCCC Precise DG 39P**  
**15198323** KM Barb 3617

#B/R New Design 323  
 Hyline Ellen 410  
 #+RR Daquantae 789E  
 +VDAR Beauty 441  
 #GAR Precision 1680  
 Stone Gate Jessie  
 KM Mc Traveler 935  
 KM Barb 2975

CW
+13
MARB
+22
REA
+15
FAT
-.023

BE PD	WE PD	YE PD	MILK
+2.5	+29	+54	+11

\$W	\$F	\$G	\$B
+15.98	+1.16	+23.46	+47.88

• **Consignor: Fulper Angus Farm, Booneville, MS**

- Solid bred cow that has a really good heifer calf at side.
- LOT 67A      SEX: Heifer      DOB: 8-30-14      SIRE: SS Objective T510 OT26



**68****BoBo QUEEN PEGGY 5344** [AMF-NHF]

Birth Date: 12-11-2005

Cow 15241135

Tattoo: 5344

R3 Scanner L527 SCC  
 14048508 Erica Lassie of RR 7766

#GAR Precision 1680

Southern Queen Peggy 3442  
 +14456446 JB Queen Peggy 5B

#B/R New Design 036  
 Bon View Pride 664  
 HA 2041 Traveler 5016  
 #Erica Lassie of RR 5607  
 #Tehama Bando 155  
 9J9 GAR 856  
 #Traveler 124 GDAR  
 JB Queen Peggy 7Z

<b>CW</b>
+16
<b>MARB</b>
+66
<b>REA</b>
+14
<b>FAT</b>
+035

BEPD	WEPD	YEPD	MILK	\$W	\$F	\$G	\$B
+1.5	+33	+64	+27	+25.81	+10.91	+33.58	+62.09

• **Consignor: Fulper Angus Farm, Booneville, MS**

- This 1407, Traveler bred female is out of dam that traces through the Queen Peggy family of females.
- Bred AI on 12-28-13 to SS Objective T510 OT26. Safe and due 10-4-14.
- Lot 68A Bull 10-5-14 Sire: SS Objective T510 OT26

**69****FULPER BLACKBIRD F070**

Birth Date: 8-19-2010

Cow 16877348

Tattoo: F070

Nichols Extra K205  
 #13752642 Nichols Black Heiress F346

#GAR Retail Product

Bo Bo Blackbird 444-786  
 15898373 DA Blackbird Ethel 822 444

#N Bar Emulation EXT  
 Nichols Eileen May F261  
 +Nichols Heavy Duty D20  
 Nichols Black Heiress B3  
 #GAR Precision 1680  
 +GAR Ext 4927  
 #Bon View New Design 878  
 DA Blackbird Ethel 33 P 822

<b>CW</b>
+26
<b>MARB</b>
+41
<b>REA</b>
+42
<b>FAT</b>
-014

BEPD	WEPD	YEPD	MILK	\$W	\$F	\$G	\$B
+3.0	+48	+90	+26	+34.86	+35.95	+31.82	+73.89

• **Consignor: Fulper Angus Farm, Booneville, MS**

- A high-volume daughter of the ABS Global sire, Nichols Extra K205. Her dam, a product of the Dyar Angus program, is a great cow.
- Top 20% YW, \$W and \$F, top 25% \$YG, top 30% \$B.
- Bred AI on 4-13-14 to SS Objective T510 OT26.
- LOT 69A SEX: Bull DOB: 1-26-14 SIRE: B/R New Day 454

**70****TT MISS PRIDETA W278**

Birth Date: 10-13-2011

Cow 17256082

Tattoo: W278

#+Boyd New Day 8005  
 GDAR Game Day 449 (RF)  
 #+14691231 #GDAR Miss Wix 474

#Sitz Upward 307R

CWL Pride 9042  
 +16584905 +Lemmon Pride P170

#AAR New Trend  
 SVF Forever Lady 57D  
 #Tehama Band 207  
 GDAR Miss Wix 749  
 #Connealy Onward  
 Sitz Henrietta Pride 81M  
 #BCC Bushwacker 41-93  
 +B/R Lemmon Pride K42

<b>CW</b>
+29
<b>MARB</b>
+57
<b>REA</b>
+59
<b>FAT</b>
+025

BEPD	WEPD	YEPD	MILK	\$W	\$F	\$G	\$B
+1.8	+56	+94	+29	+48.61	+37.12	+35.09	+81.03

• **Consignor: Fulper Angus Farm, Booneville, MS**

- A young impressive Game Day daughter out of a Sitz Upward and out of the donor cow Lemmon Pride P170.
- Great genetics here and she has an Image Maker bull calf at side.
- Bred AI on 5-30-14 to SS Objective T510 OT26.
- LOT 70A SEX: Bull DOB: 2-26-14 SIRE: H A Image Maker 0415

**HA Image Maker 0415**

**71****FULPER RITA 032** [DDP]

Birth Date: 3-24-2012

Cow 17708210

Tattoo: 032

#Nichols Extra H6

**Nichols Extra K205**

#13752642 Nichols Black Heiress F346

#+Dr J Analyst M250

**Ray Rita 8478**

#16420116 +Ray Rita 297

#N Bar Emulation EXT

Nichols Eileen May F261

+Nichols Heavy Duty D20

Nichols Black Heiress B3

#BCC Bushwacker 41-93

GAR Precision 706

#B/R New Design 323

GAR Pierre 1322

<b>CW</b>
+26
<b>MARB</b>
+0.63
<b>REA</b>
+0.47
<b>FAT</b>
+0.017

BE PD	WE PD	YE PD	MILK	\$W	\$F	\$G	\$B
+2.0	+51	+92	+29	+37.26	+37.04	+37.04	+79.25

• **Consignor: Fulper Angus Farm, Booneville, MS**

• Another attractive K205 daughter and this one traces on her bottom side to the Ray Cattle Company foundation donor, GAR Pierre 1322. Top 15% \$W, top 20% \$QG, top 25% \$G, top 30% Marbling and \$F.

• Just look at her CC&amp;7 bull calf at side.

• Bred 5-10-14 to VAR Discovery.

• LOT 71A

SEX: Bull

DOB: 3-24-14

SIRE: SydGen CC&amp;7

**72****H A BONNIE 950** [DDP]

Birth Date: 9-24-2009

Cow 16536688

Tattoo: 950

#B/R New Design 036

**Bon View New Design 1407**

#12783540 Bon View Pride 664

#Hyline Right Time 338

**BW Bonnie 5118**

#15169731 Whites Ms Burgess 107 903 982

#VDAR New Trend 315

B/R Blackcap Empress 76

#+GAR Sleep Easy 1009

#Bon View Pride 1551

#+Leachman Right Time

Hyline Pride 265

Whites 903 NT 585

Flying W Angus Bonnie 982

<b>CW</b>
+22
<b>MARB</b>
+0.61
<b>REA</b>
+0.38
<b>FAT</b>
-0.003

BE PD	WE PD	YE PD	MILK	\$W	\$F	\$G	\$B
+1.4	+40	+74	+24	+29.71	+19.67	+38.10	+74.89

• **Consignor: Fulper Angus Farm, Booneville, MS**

• A high-volume, attractive 1407 daughter out of a Right Time 338 dam.

• Top 20% Marbling, \$G and \$QG, top 30% \$YG and \$B.

• LOT 72A

SEX: Bull

DOB: 09-12-14

SIRE: SS Objective T510 OT26

**73****HICKORY HILL ERICA 301**

Birth Date: 3-14-2013

Cow 17885894

Tattoo: 301

Connealy Product 568

**Connealy Final Product**

#15848422 #Ebonista of Conanga 471

#Connealy Impression

**Hickory Hill Erica 036**

#16944099 Hickory Hill Erica 011

#GAR Retail Product

Pride Fine of Conanga 566

#Connealy Deep Canyon 454

Ebonista of Conanga 5469

#Connealy Reflection

Pearl Pammy of Conanga 194

#Leachman Explorer

Hickory Hill Lisa Marie

S D

<b>CW</b>	<b>CW</b>
+34	+27
<b>MARB</b>	<b>MARB</b>
+0.34	+0.32
<b>REA</b>	<b>REA</b>
+0.76	+0.55
<b>FAT</b>	<b>FAT</b>
+0.076	-0.003

BE PD	WE PD	YE PD	MILK	\$W	\$F	\$G	\$B
S +0.8	+66	+118	+34	+62.18	+64.62	+21.63	+75.56
D +2.2	+51	+83	+20	+32.57	+25.53	+28.31	+71.16

• **Consignor: Hickory Hill, West Plains, MO**

• Hickory Hill Erica 301 is a long-bodied, gentle bred heifer sired by the popular ABS sire, Connealy Final Product. Her dam is a moderate-framed, nice uddered Connealy Impression daughter that was Senior Calf Champion at the Heart Of The Ozarks Fair.

• This heifer sells bred on 8-8-14 to the highest \$B Final Answer son in the Angus breed, KCF Bennett Absolute. Erica 301 should make an outstanding producing brood cow.

**KCF Bennett Absolute**

**74****HICKORY HILL BLACKBIRD 234** [DDP]

Birth Date: 11-14-2012

Cow 17537350

Tattoo: 234

#Connealy Leadtime

**Connealy Lead On**

#13447282 Eligence Plus of Conanga

#+SAV Bismarck 5682 (PDF)

**Hickory Hill Blackbird 921**

17254512 Hickory Hill Blackbird 111

#Connealy Dateline

#Ruths Rona of Conanga

#TC Dividend 963 (PDF)

Eura Cap of Conanga

#+GAR Grid Maker

SAV Abigale 0451

Hickory Hill Designer Gene

Hickory Hill Blackbird 725

<b>CW</b>	N/A
<b>MARB</b>	N/A
<b>REA</b>	N/A
<b>FAT</b>	N/A

BE PD	WE PD	YE PD	MILK
+1.7	+50	+90	+25

\$W	\$F	\$G	\$B
+31.71	+34.94	N/A	N/A

• **Consignor: Hickory Hill, West Plains, MO**

- Hickory Hill Blackbird 234 is a long, feminine bred heifer sired by the still popular Connealy Lead On. Lead On daughters have been some of our best foundation cows in the Hickory Hill herd. Her dam is our most powerful Bismarck daughter with a pleasing udder shape and small teat size. The grandam is sired by our Designer Gene bull that was the record-selling bull in a NEA sale until a couple of years ago.
- This heifer sells bred on 9-9-14 to the very popular ABS sire, KCF Bennett Absolute.

**75****HILLS LORI LEISURE 362**

Birth Date: 3-23-2013

Cow 17715807

Tattoo: 362

Sitz Dash 10277

**Harris Dash 003**

16601739 Harris Mary 773

#LT 598 Bando 9074

**Hills Lori Leisure 840**

16363406 Hills Lori Leisure 617

#Sitz Upward 307R

+Sitz Everelda Entense 2665

Harris 6595 Alliance TC 404

Harris Mary 862

#+SAF 598 Bando 5175

#Mill Coulee Barbara K 323

HAF Traveler 8180 500

Hills Lori Leisure 605

<b>CW</b>	N/A
<b>MARB</b>	N/A
<b>REA</b>	N/A
<b>FAT</b>	N/A

BE PD	WE PD	YE PD	MILK
+0	+45	+74	+22

\$W	\$F	\$G	\$B
+34.60	+17.31	N/A	N/A

• **Consignor: Hill Angus, Paragould, AR**

- Low birth EPD female. She combines Stiz Upward, Sitz Alliance, Bando 9074 and many other great bulls.
- Bred AI on 6-28-14 to Connealy Freightliner then pasture exposed after 7-15-14 to EAF 0105 Black Cedar 302. Safe.

**76****KIMBOB NEW DESIGN MISSY K001** [DDP-CAF]

Birth Date: 6-28-2008

Cow 16351605

Tattoo: K001

#B/R New Design 036

**XXG New Design P22**

+14154326 Broken Arrow Miss Russ 807

+Bubs Crown Prince

**Hickory Hill Missy NA22**

14667610 Hickory Hill Missy 809

#VDAR New Trend 315

B/R Blackcap Empress 76

#+Gdar SVF Russ 184B

+HR Wendy 605

#Bubs Direct Deposit 200

Bubs Good Formula E189

#Sitz Traveler 8180

Hickory Hill Caroline (PDF)

<b>CW</b>	N/A
<b>MARB</b>	N/A
<b>REA</b>	N/A
<b>FAT</b>	N/A

BE PD	WE PD	YE PD	MILK
+2.3	+49	+81	+15

\$W	\$F	\$G	\$B
+29.43	+24.00	N/A	N/A

• **Consignor: Kimbob Farm, Ward, AR**

- An attractive, productive female out of a Bubs Crown Prince daughter from the Hickory Hill program. Good deal here with an Impression heifer calf at side.
- LOT 76A      SEX: Heifer      DOB: 9-1-14      SIRE: Connealy Impression

**77****KIMBOB QUEEN J OT26 K029**

Birth Date: 10-30-2010

Cow 17045339

Tattoo: K029

#SS Traveler 6807 T510

**SS Objective T510 OT26**

#13776378 SS Miss Rita R011 7R8

#+B/R New Frontier 095

**Clearwater Queen J 285**

15122795 Clearwater Queen J 111

#DHD Traveler 6807

#SS Miss Hi Spade A114

SS Rito Rito R76 R011

SS Miss Ultress U56

#B/R New Design 036

White Fence Pride H1

#+GDAR SVF Traveler 234D

Clearwater Queen J 107

<b>CW</b>	N/A
<b>MARB</b>	N/A
<b>REA</b>	N/A
<b>FAT</b>	N/A

BE PD	WE PD	YE PD	MILK
+5	+55	+94	+21

\$W	\$F	\$G	\$B
+36.47	+37.63	N/A	N/A

• **Consignor: Kimbob Farm, Ward, AR**

- An eye-catching young cow by the noted carcass sire, Objective. Her yearling heifer sells as Lot 78.
- Bred to Connealy Impression due 11-7-14, safe.



## Connealy Impression

# 78

## KIMBOB QUEEN J K065

Birth Date: 12-18-2013

Cow 17769014

Tattoo: K065

#Connealy Reflection  
**Connealy Impression**  
 #15543702 Pearl Pammy of Conanga 194

#SS Objective T510 OT26  
**Kimbob Queen J OT26 K029**  
 17045339 Clearwater Queen J 285

#Bon View New Design 878  
 Happy Grill of Conanga 6260  
 #Vermilion Dateline 7078  
 Pearl Jam of Conanga 6114  
 #SS Traveler 6807 T510  
 SS Miss Rita R011 7R8  
 #+B/R New Frontier 095  
 Clearwater Queen J 111

<b>CW</b>
N/A
<b>MARB</b>
N/A
<b>REA</b>
N/A
<b>FAT</b>
N/A

BEPD	WEPD	YEPD	MILK
+8	+60	+100	+25

\$W	\$F	\$G	\$B
+39.08	+42.99	N/A	N/A

• **Consignor: Kimbob Farm, Ward, AR**

- A fancy young heifer by the ever popular AI sire, Connealy Impression. Her dam sells as Lot 77. Impression is noted for attraction offspring with great carcass qualities. Sells open.

# 79

## RBA GAME DAY ANGEL 401

Birth Date: 2-10-2014

Cow 17875603

Tattoo: 401

#+Boyd New Day 8005  
**GDAR Game Day 449** (PDF)  
 #+14691231 #GDAR Miss Wix 474

RBA Alliance St Patrick 916  
**RBA Alliance Abby 1111**  
 16913812 RBA 103 P Play Annabelle 320

#AAR New Trend  
 SVF Forever Lady 57D  
 #Tehama Band 207  
 GDAR Miss Wix 749  
 RBA Alliance Eli  
 RBA Scotchcap 9440 Pam  
 RBA Power Play 103  
 RBA Rainmaker Corey 705

<b>CW</b>
N/A
<b>MARB</b>
N/A
<b>REA</b>
N/A
<b>FAT</b>
N/A

BEPD	WEPD	YEPD	MILK
+0	+36	+69	+22

\$W	\$F	\$G	\$B
+27.19	+15.48	N/A	N/A

• **Consignor: Rocky Bayou Angus Farm, Melbourne, AR**

- Lots 79 through 88 are right from the heart of the Rocky Bayou herd. Game Day daughters are efficient, excellent uddered daughters. Sells open.

# 80

## RBA GAME DAY HOPE 403

Birth Date: 2-18-2014

Cow 17875598

Tattoo: 403

#+Boyd New Day 8005  
**GDAR Game Day 449** (PDF)  
 #+14691231 #GDAR Miss Wix 474

#SydGen CC&7  
**RBA Elsie 201**  
 17220510 RBA Alliance Elizabeth 1003

#AAR New Trend  
 SVF Forever Lady 57D  
 #Tehama Band 207  
 GDAR Miss Wix 749  
 #+SAF Connection  
 SydGen Forever Lady 4087  
 RBA Alliance Eli  
 RBA Strategy's Erin

<b>CW</b>
N/A
<b>MARB</b>
N/A
<b>REA</b>
N/A
<b>FAT</b>
N/A

BEPD	WEPD	YEPD	MILK
+8	+56	+100	+29

\$W	\$F	\$G	\$B
+36.15	+45.07	N/A	N/A

• **Consignor: Rocky Bayou Angus Farm, Melbourne, AR**

- Another Game Day daughter and out of the same mold as Lot 79. This one is out of a high quality CC&7 dam. Sells open.

**81****RBA UNMISTAKABLE Vonita 405**

Birth Date: 2-18-2014

Cow 17875671

Tattoo: 405

OCC Paxton 730P  
**OCC Unmistakable 946U**  
 +16294218 +FCC Revolution Rose 2476

RBA Alliance Eli  
**RBA Alliance Esther 906**  
 16309129 RBA Strategy's Erin

+OCC Focus 813F  
 OCC Blackbird 736K  
 #+OCC Emblazon 854E  
 OCC Revolution Rose 887H  
 #Sitz Alliance 6595  
 RBA Rainmaker Penny 812  
 #+SAF Strategy 9015  
 RBA Rainmaker Molly 104

<b>CW</b>
N/A
<b>MARB</b>
N/A
<b>REA</b>
N/A
<b>FAT</b>
N/A

BEPD	WEPD	YEPD	MILK	\$W	\$F	\$G	\$B
+2.0	+58	+97	+16	+32.45	+40.04	N/A	N/A

- **Consignor: Rocky Bayou Angus Farm, Melbourne, AR**
- A daughter of Unmistakable, a bull noted for combining moderate size and fleshing ability. This one should make a great brood cow. Sells open.

**82****RBA UNMISTAKABLE Becca 406**

Birth Date: 2-18-2014

Cow 17875672

Tattoo: 406

OCC Paxton 730P  
**OCC Unmistakable 946U**  
 +16294218 +FCC Revolution Rose 2476

#+SAF Strategy 9015  
**RBA Strategy Amelia 612**  
 15373466 RBA Rainmaker Amy 813

+OCC Focus 813F  
 OCC Blackbird 736K  
 #+OCC Emblazon 854E  
 OCC Revolution Rose 887H  
 #SAF Focus of ER  
 +SAF Royal Queen 5084  
 R&R Max 503  
 Barnett Rainmaker Betty 275

<b>CW</b>
N/A
<b>MARB</b>
N/A
<b>REA</b>
N/A
<b>FAT</b>
N/A

BEPD	WEPD	YEPD	MILK	\$W	\$F	\$G	\$B
+1.3	+56	+93	+16	+34.09	+35.82	N/A	N/A

- **Consignor: Rocky Bayou Angus Farm, Melbourne, AR**
- Another Unmistakable daughter and this one out of a Strategy dam.
- Top 20% WW, top 30% YW and \$W.
- Sells open.

**83****RBA UNMISTAKABLE Juanita 410**

Birth Date: 2-20-2014

Cow 17875670

Tattoo: 410

OCC Paxton 730P  
**OCC Unmistakable 946U**  
 +16294218 +FCC Revolution Rose 2476

RBA Alliance Eli  
**RBA Alliance Ethel 907**  
 16309130 RBA Strategy's Erin

+OCC Focus 813F  
 OCC Blackbird 736K  
 #+OCC Emblazon 854E  
 OCC Revolution Rose 887H  
 #Sitz Alliance 6595  
 RBA Rainmaker Penny 812  
 #+SAF Strategy 9015  
 RBA Rainmaker Molly 104

<b>CW</b>
N/A
<b>MARB</b>
N/A
<b>REA</b>
N/A
<b>FAT</b>
N/A

BEPD	WEPD	YEPD	MILK	\$W	\$F	\$G	\$B
+2.0	+57	+96	+16	+31.87	+39.24	N/A	N/A

- **Consignor: Rocky Bayou Angus Farm, Melbourne, AR**
- These half to three-quarter sisters by Unmistakable are sure to make top cows.
- Their dams are really great producers in the Rocky Bayou herd. Top 15% WW, top 25% YW and \$F.
- Sells open.

**84****RBA UNMISTAKABLE Moxie 411**

Birth Date: 2-20-2014

Cow 17875669

Tattoo: 411

OCC Paxton 730P  
**OCC Unmistakable 946U**  
 +16294218 +FCC Revolution Rose 2476

RBA Alliance Eli  
**RBA Alliance Elena 1007**  
 16654705 Barnetts Bando Elba 435

+OCC Focus 813F  
 OCC Blackbird 736K  
 #+OCC Emblazon 854E  
 OCC Revolution Rose 887H  
 #Sitz Alliance 6595  
 RBA Rainmaker Penny 812  
 MAR Bando 915  
 Barnetts Elba Pattern 173

<b>CW</b>
N/A
<b>MARB</b>
N/A
<b>REA</b>
N/A
<b>FAT</b>
N/A

BEPD	WEPD	YEPD	MILK	\$W	\$F	\$G	\$B
+1.2	+49	+81	+13	+30.17	+24.00	N/A	N/A

- **Consignor: Rocky Bayou Angus Farm, Melbourne, AR**
- These heifers are just like peas in a pod. They are sure to add value to the herds they go to.
- It would be great if they all went to the same operation. Sells open.



**85****RBA UNMISTAKABLE JAWNIE 412**

Birth Date: 2-20-2014

Cow 17875675

Tattoo: 412

OCC Paxton 730P  
**OCC Unmistakable 946U**  
 #+16294218 +FCC Revolution Rose 2476

#Bon View New Design 878

**RBA New Design Judy 325**  
 14399279 RBA Bando Becky 819

+OCC Focus 813F  
 OCC Blackbird 736K  
 #+OCC Emblazon 854E  
 OCC Revolution Rose 887H  
 #B/R New Design 036  
 Bon View Gammer 85  
 R&R Max 503  
 Barnettts Bando Elba 435

<b>CW</b>
N/A
<b>MARB</b>
N/A
<b>REA</b>
N/A
<b>FAT</b>
N/A

BE PD	WE PD	YE PD	MILK	\$W	\$F	\$G	\$B
-1	+55	+90	+15	+35.94	+32.44	N/A	N/A

- **Consignor: Rocky Bayou Angus Farm, Melbourne, AR**
- Just look at this genetic package. The Unmistakable daughter is out of a daughter of the legendary Pathfinder Sire 878.
- This is a total maternal package.
- Sells open.

**86****RBA GAME DAY REBA 413**

Birth Date: 2-21-2014

Cow 17875600

Tattoo: 413

#+Boyd New Day 8005  
**GDAR Game Day 449** (DF)  
 #+14691231 #GDAR Miss Wix 474

#Connealy Thunder (DF)

**RBA Thunder Eva 1101**  
 16915729 RBA Alliance Esther 906

#AAR New Trend  
 SVF Forever Lady 57D  
 #Tehama Band 207  
 GDAR Miss Wix 749  
 #Baldrige Kaboom K243 KCF  
 #Parka of Conanga 241  
 RBA Alliance Eli  
 RBA Strategy's Erin

<b>CW</b>
N/A
<b>MARB</b>
N/A
<b>REA</b>
N/A
<b>FAT</b>
N/A

BE PD	WE PD	YE PD	MILK	\$W	\$F	\$G	\$B
+5	+42	+82	+24	+28.23	+28.66	N/A	N/A

- **Consignor: Rocky Bayou Angus Farm, Melbourne, AR**
- A high-volume, easy fleshing daughter of Game Day and out of a Connealy Thunder dam.
- The Thunder daughters are beautiful cows with nice udders.
- Sells open.

**87****RBA UNMISTAKABLE BETSY 414**

Birth Date: 2-21-2014

Cow 17875673

Tattoo: 414

OCC Paxton 730P  
**OCC Unmistakable 946U**  
 #+16294218 +FCC Revolution Rose 2476

#+SAF Strategy 9015

**RBA Strategy's Erin**  
 14751774 RBA Rainmaker Molly 104

+OCC Focus 813F  
 OCC Blackbird 736K  
 #+OCC Emblazon 854E  
 OCC Revolution Rose 887H  
 #SAF Focus of ER  
 +SAF Royal Queen 5084  
 #N Bar Power Play B363 C526  
 RBA Rainmaker Corey 705

<b>CW</b>
N/A
<b>MARB</b>
N/A
<b>REA</b>
N/A
<b>FAT</b>
N/A

BE PD	WE PD	YE PD	MILK	\$W	\$F	\$G	\$B
+2.7	+60	+100	+19	+33.13	+42.99	N/A	N/A

- **Consignor: Rocky Bayou Angus Farm, Melbourne, AR**
- This Unmistakable daughter is out of a really good Strategy dam. Lots of really strong genetics bred into this attractive heifer.
- Top 10% WW, top 15% YW, top 20% \$F.
- Sells open.

**88****RBA GAME DAY KIM 416**

Birth Date: 2-24-2014

Cow 17875601

Tattoo: 416

#+Boyd New Day 8005  
**GDAR Game Day 449** (DF)  
 #+14691231 #GDAR Miss Wix 474

#Connealy Thunder (DF)

**RBA Thunder Cassie 1104**  
 16915728 RBA Alliance Carmen 917

#AAR New Trend  
 SVF Forever Lady 57D  
 #Tehama Band 207  
 GDAR Miss Wix 749  
 #Baldrige Kaboom K243 KCF  
 #Parka of Conanga 241  
 RBA Alliance Eli  
 RBA Bando Coretta 606

<b>CW</b>
N/A
<b>MARB</b>
N/A
<b>REA</b>
N/A
<b>FAT</b>
N/A

BE PD	WE PD	YE PD	MILK	\$W	\$F	\$G	\$B
+9	+49	+91	+25	+31.55	+36.75	N/A	N/A

- **Consignor: Rocky Bayou Angus Farm, Melbourne, AR**
- A Game Day heifer that is a three-quarter sister to Lot 86.
- These heifers are bred to be top-producing brood cows. Top 25% BW.
- Sells open.



**CSC MS Peg X58 - Lot 89**

**89**

**CSC Ms PEG X58** [DDC]

Birth Date: 9-1-2010

Cow 16802040

Tattoo: X58

#Connealy Onward

#Connealy Lead On

**Connealy Forward**

Altune of Conanga 6104

#15491633 Becky Lee of Conanga 74

#+GAR Grid Maker

Beckon Lee of Conanga 73

#+Rito 2V1 of 2536 1407

#Bon View New Design 1407

**Days Ms Peg S641**

GAR Precision 2536

#+15721955 +Toebben Peg C001

#Sitz Traveler 8180

+Harmony Hill Peg 443

<b>CW</b>
+33
<b>MARB</b>
+46
<b>REA</b>
+57
<b>FAT</b>
+024

BEPD	WEPD	YEPD	MILK	\$W	\$F	\$G	\$B
+1.7	+55	+98	+28	+34.30	+42.91	+30.52	+81.11

• **Consignor: Satterfield Angus, Norfolk, AR**

• A powerful, attractive Connealy Forward daughter out of a really great cow from the Harmony Hill Peg family of females.

• Heifer calf at side by SydGen CC&7 0065, a bull that adds extra length and muscle. Pasture exposed from 5-15-14 to 9-1-14 to SydGen Stacked Deck 1605. A really solid performance sire and could be the best son to date.

• Safe in calf.

• LOT 89A      SEX: Heifer      DOB: 2-13-14      SIRE: SydGen CC&7 0065

**90**

**ESF LADY LUCK J514**

Birth Date: 9-13-2009

Cow 16651094

Tattoo: J514

#SAF Directive

#Millcreek Diversity

**SydGen Turbo 6684**

+SAF Royal Queen 5084

15553710 +GAR 616 Rito 2472

#Rito 616 of 4B20 6807

+GAR Precision 709

#TC Gridiron 258

#+GAR Grid Maker

**ESF Lady Luck 256**

#TC Blackbird 7049

15917250 ESF Lady Luck J300

#SAF Focus of ER

#ESF Lady Luck J268

<b>CW</b>
+42
<b>MARB</b>
+41
<b>REA</b>
+28
<b>FAT</b>
-038

BEPD	WEPD	YEPD	MILK	\$W	\$F	\$G	\$B
+3.9	+65	+114	+11	+23.52	+59.51	+29.76	+90.12

• **Consignor: Satterfield Angus, Norfolk, AR**

• Big, high-performance, easy fleshing cow and sure to create attention on sale day. She and her Stacked Deck daughter at side could both become donors in many programs.

• Top 1% WW, YW and \$F, top 5% \$B. Heifer calf by the exciting ORlGen AI Sire SydGen Stacked Deck 1605.

• His two grandams are the dams of CC&7, Googol, Jack Daniel, Trust and Dealer.

• These two cows are two of the most influential cows in the SydGen herd.

• LOT 90A      SEX: Heifer      DOB: 8-3-14      SIRE: SydGen Stacked Deck 1605



**ESF Lady Luck J514 - Lot 90**



### Mytty In Focus

# 91

## BRAMBILLA PRINCESS D 9089

[DDP]

Birth Date: 9-8-2009

Cow 16480578

Tattoo: 9089

#SAF Focus of ER

#SAF Fame

**CW**

Mytty In Focus [PDF]

GDAR Forever Lady 246

**+25**

#13880818 Mytty Countess 906

#Sitz Alliance 6595

**MARB**

#Bon View New Design 1407

Baldrige Countess 357

**+71**

Day's Princess D D107

#B/R New Design 036

**REA**

15045138 Circle A Princess D 9261

Bon View Pride 664

**+26**

#+SVF Gdar 216 LTD

**FAT**

+Circle A Princess D 6269

**+011**

BEPD	WEPD	YEPD	MILK
-1.2	+49	+87	+24

\$W	\$F	\$G	\$B
+34.25	+31.58	+37.70	+78.71

• **Consignor: T-BAR, Tecumseh, MO**

- This young calving-ease cow has a -.2 BW EPD, is very well proportioned and has a high Marbling EPD.
- Pasture exposed to EXAR Cowboy 3037 (Reg. No. 17572070) from 6-9-14 to 11-1-14. Pregnancy will be confirmed by veterinarian before sale day.
- Mytty In Focus is the maternal grandsire of her stout bull calf at side. He will also be a calving-ease bull.
- LOT 91A SEX: Bull DOB: 5-9-14 BW: 85 SIRE: EXAR Hoover Dam 1316B

# 92

## NEWBERRY BLACKBIRD Y13

[DDF]

Birth Date: 2-10-2011

Cow 17073839

Tattoo: Y13

#+SAF Connection

#+SVF Gdar 216 LTD

**CW**

SydGen CC&7

+SAF Royal Queen 5084

**+42**

#15330743 SydGen Forever Lady 4087

#SydGen 1407 Corona 2016

**MARB**

#+GAR Integrity

+SAF Forever Lady 8292

**+38**

Deer Valley Blackbird 543

#Bon View New Design 1407

**REA**

+14985604 +Triple E Blackbird 1018

GAR Precision 1019

**+50**

#Bon View Bando 598

**FAT**

Davis Yr Blackbird 558H

**-036**

BEPD	WEPD	YEPD	MILK
+1.1	+42	+85	+25

\$W	\$F	\$G	\$B
+31.19	+32.49	+30.81	+89.11

• **Consignor: Taylor Angus Ranch, Mount Pleasant, AR**

- This beautiful young CC&7 daughter is hard to part with. We are keeping her 2013 calf who has her mother's classy good looks.
- Top 5% CW, top 10% \$B, top 20% RE, top 25% \$F.
- Blackbird Y13 is safe in calf to TAR Mentor Val Byrne 214 and is due 11-10-14. The mating of these two pedigrees will result in an outstanding calf.



**Triple E Blackbird 1018** - Donor grandam of Lot 92.



### B/R New Frontier 095

# 93

## TAR NFRNTR AMELIA EARHART 135

Birth Date: 10-16-2011

Cow 17049545

Tattoo: 135

#B/R New Design 036  
**B/R New Frontier 095**  
 #+13588640 White Fence Pride H1

#SS Objective T510 0T26  
**TAR KLC Audrey Hepburn 817**  
 16208574 TAR Elsie Phillipa 502

#VDAR New Trend 315  
 B/R Blackcap Empress 76  
 #Connealy Dateline  
 #Pleasant Pill of Conanga  
 #SS Traveler 6807 T510  
 SS Miss Rita R011 7R8  
 #Nichols Extra H6  
 TAR Elsie Leela Ameer 320

CW
N/A
MARB
N/A
REA
N/A
FAT
N/A

BEPD	WEPD	YEPD	MILK	\$W	\$F	\$G	\$B
+8	+47	+81	+18	+38.99	+24.97	N/A	N/A

• **Consignor: Taylor Angus Ranch, Mount Pleasant, AR**

- B/R New Frontier 095 daughter with gorgeous confirmation and udder.
- Top 10% \$W, top 15% CED, top 20% BW.
- Safe in calf to TAR Mentor Val Byrne 214 and due 11-1-14. Sports a \$EN of +10.40, now that is feed efficient! Amelia 135 is the front pasture kind you will be proud of.

# 94

## TAR MFLR DOROTHY DUNNETT 819

Birth Date: 10-1-2008

Cow 16208581

Tattoo: 0819

#Bon View New Design 208  
**Rito 4L6 of 2536 208**  
 +14641538 GAR Precision 2536

#Mytty In Focus <sup>PDF</sup>  
**TAR Mflwr Lady Jane Grey 617**  
 15471534 Mayflower Jo Mary Cassatt

#B/R New Design 036  
 #Bon View Erica 443  
 #GAR Precision 1680  
 +GAR Ext 2104  
 #SAF Focus of ER  
 Mytty Countess 906  
 #Summitcrest Hi Flyer 3B18  
 Tar Mayflower Madam Jo 706

CW
N/A
MARB
N/A
REA
N/A
FAT
N/A

BEPD	WEPD	YEPD	MILK	\$W	\$F	\$G	\$B
+1.6	+35	+68	+19	+29.84	+14.75	N/A	N/A

• **Consignor: Taylor Angus Ranch, Mount Pleasant, AR**

- This Rito 4L6 of 2536 208 daughter is a credit to her grandam and one of our favorites. She and her half-sister Caroline 820 selling as Lot 95 are foundation cows.
- Dorothy 819 settles, delivers and raises a beautiful calf every year.
- Terrific confirmation, udder and disposition that she passes to her offspring.
- Bred and safe in calf to TAR Mentor Val Byrne 214 and due 10-9-14.

# 95

## TAR KLC CAROLINE 820

Birth Date: 10-1-2008

Cow 16208577

Tattoo: 820

#Bon View New Design 208  
**Rito 4L6 of 2536 208**  
 +14641538 GAR Precision 2536

#SS Objective T510 0T26  
**TAR Elsie Leela Sophia 608**  
 15471525 TAR Elsie Leela Ameer 320

#B/R New Design 036  
 #Bon View Erica 443  
 #GAR Precision 1680  
 +GAR Ext 2104  
 #SS Traveler 6807 T510  
 SS Miss Rita R011 7R8  
 #+SAF Strategy 9015  
 TAR Nefertiti Karen Lynn 001

CW
N/A
MARB
N/A
REA
N/A
FAT
N/A

BEPD	WEPD	YEPD	MILK	\$W	\$F	\$G	\$B
-.6	+45	+72	+20	+37.89	+14.90	N/A	N/A

• **Consignor: Taylor Angus Ranch, Mount Pleasant, AR**

- Half-sister to Lot 94 and daughter of Rito 4L6 of 2536 208. Another foundation cow denoting all the good stuff of her famous grandam.
- Breeds every year, delivers and raises a great calf with a good disposition. Caroline 820 is feminine in the classic Angus sense with pluses in all the right places and is simply a great cow.
- Top 2% CED, top 5% BW.
- Bred to TAR Mentor Val Byrne 214, safe in calf and due 10-10-14.



**96****WC Miss Sara 191**

Birth Date: 12-10-2013

Cow 17880107

Tattoo: 191

#SAV Net Worth 4200  
**WCC Worth It 511**  
**16933130** TAR Johanna Wilhelmina 718

#SAV 8180 Traveler 004 <sup>(PDF)</sup>  
 +SAV May 2410  
 #+Rito 4L60 of 2536 BVND 208  
 Mayflower Jo Mary Cassatt

S	D
CW	CW
N/A	N/A
MARB	MARB
N/A	N/A
REA	REA
N/A	N/A
FAT	FAT
N/A	N/A

Sunset Traveler 079  
**Sunset Miss Sara 191**  
**14143337** Sunset Miss Susan 19

Sunset Travelers Dividend116  
 MAF Sunset Maid 107  
 Sunset Dividend 07  
 Sunset Miss Dividend

	BEPD	WEPD	YEPD	MILK	\$W	\$F	\$G	\$B
S	N/A	N/A	N/A	N/A	N/A	N/A	N/A	N/A
D	+1.8	+24	+43	+12	+16.69	-8.83	N/A	N/A

- **Consignor: Wingert Cattle Company, Rose Bud, AR**
- Nice replacement heifer that combines Net Worth with Dividend on bottom.
- Sells open.

**97****PLANTATION PRIDE LADY 967**

Birth Date: 9-23-2009

Cow 16605224

Tattoo: 967

#SAV 8180 Traveler 004 <sup>(PDF)</sup>  
**Plantation 004 2905**  
 +15711494 #+GAR Expectation 290

#Sitz Traveler 8180  
 +Boyd Forever Lady 8003  
 #+GAR Expectation 4915  
 +GAR Sleep Easy 2177  
 #+Leachman Right Time  
 Hyline Pride 265  
 #+VDAR New Trend 933  
 Macedon Pride Lady 180

CW
+40
MARB
+36
REA
+39
FAT
+044

#Hyline Right Time 338  
**Plantation Pride Lady PF67**  
**15624293** Macedon Pride Lady 204

	BEPD	WEPD	YEPD	MILK	\$W	\$F	\$G	\$B
	+4.1	+49	+91	+25	+23.81	+36.75	+20.21	+77.19

- **Consignor: Wingert Cattle Company, Rose Bud, AR**
- A young pair that blends several Pathfinders in her pedigree.
- Macedon Pride Lady 204 was one of the top producers in the Plantation herd.
- Top 5% CW, top 20% YW and \$F, top 25% \$B, top 30% WW.
- LOT 97A Sex: Bull DOB: 8-20-14 SIRE: Final Product

**98****W C Lady Jilt C713**

Birth Date: 2-16-2013

Cow +17586378

Tattoo: C713

#+SAF Connection  
**SydGen CC&7**  
**#15330743** SydGen Forever Lady 4087

#+SVF Gdar 216 LTD  
 +SAF Royal Queen 5084  
 #SydGen 1407 Corona 2016  
 +SAF Forever Lady 8292  
 #Schurrtop MC  
 Schurrtop RS 1413 2153  
 #N Bar Emulation EXT  
 Lemmon Jilt 1394

CW
+37
MARB
+20
REA
+51
FAT
-064

#Schurrtop MC 2500  
**Lemmon Jilt S214**  
**15485863** +Lemmon Jilt H456

	BEPD	WEPD	YEPD	MILK	\$W	\$F	\$G	\$B
	+3.1	+52	+92	+36	+33.39	+36.53	+26.02	+79.83

- **Consignor: Wingert Cattle Company, Rose Bud, AR**
- This heifer comes from Lemmon Jilt S214, donor owned by Wingert Cattle & Lemmon Cattle Company.
- Jilt was a past Georgia National, Grand Champion and she is a great producer. She has produced several top sellers, one of which was the top-selling bull at the Northwest Georgia Bull Test.
- Bred to proven calving-ease bull, WC Blackout A860.



**Lemmon Jilt S214** - Donor dam of Lot 98.



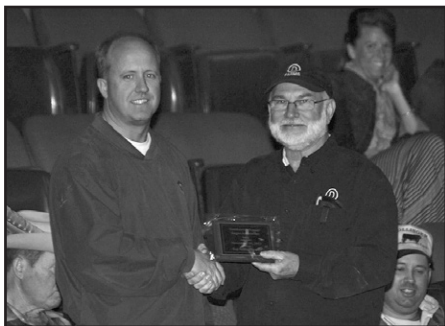
# *Thank You To March 2014 Buyers*

**James Bass**, McRae, AR  
**Ron Benedict**, Gassville, AR  
**Charles Blakenship**, Smithville, AR  
**Aaron Britt**, Paragould, AR  
**Clear Rock Creek Ranch, Inc.**, Russellville, AR  
**Chad Conder**, Batesville, AR  
**Sanford Cothorn**, Rose Bud, AR  
**Alvin Cox**, Paragould, AR  
**Christian Cox**, Paragould, AR  
**Alvin Crabtree**, Bono, AR  
**William Crum**, Bartlett, TN  
**Jim & Jamie Davault**, Senath, MO  
**Craig Day**, Cave City, AR  
**Double H Farms**, Vilonia, AR  
**Double J Cattle Ranch**, Imboden, AR  
**Flying C Ranch**, Searcy, AR  
**Frank Turner & Sons**, Hayneville, AL  
**Haley Hill Angus**, Quitman, AR  
**Morgan Hamrick**, Cherry Valley, AR  
**Happy Hollow**, Bee Branch, AR  
**Johnny Harris**, Lonoke, AR  
**Shane Harris**, Lonoke, AR  
**Heileman Cattle Company LLC**, Jonesboro, AR  
**J & J Farms**, Williford, AR  
**Kerlin Angus**, Batesville, AR  
**Lonnie King**, Jonesboro, AR  
**Lauren Koch**, North Little Rock, AR  
**Little Cattle Co. LLC**, Piggott, AR  
**Steve Long**, Pleasant Plains, AR  
**M & K Cattle**, Black Rock, AR  
**James Martin**, Cherry Valley, AR  
**Rafter D Ranch**, Mt. Pleasant, AR  
**Bob Ramsey**, Conway, AR  
**Rock & Roots LLC**, Mountain View, MO  
**S & S Farm**, Newport, AR  
**Scott Smith**, Doniphan, MO  
**Speer Farms**, Marmaduke, AR  
**Spencer Farms**, Caulfield, MO  
**Amos Stoltzfus**, Drasco, AR  
**Josie Tanner**, Pittsburg, IL  
**Tice Farms Inc.**, Crossett, AR  
**TRG Livestock LLC**, Piggott, AR  
**Tom & Margaret Vanenburg**, Desha, AR  
**W & G Davis Livestock**, Bay, AR  
**Haley Grace Walker**, Potts Camp, MS



**Mark Satterfield -**  
High-Selling Bull & Open  
Heifer 2013 Fall Sale  
presented by Bill Davis,  
VP

**Steve Copeland -** High-  
Selling Pair 2013 Fall Sale  
presented by  
Bill Davis, VP



**Pam Taylor presents**  
to Ruth Bonds Service  
Award

**ASU Culinary  
Scholarship**



www.neaaa.org



# ANGUS



**"because.....All black cattle are not created equal"**

## Northeast Arkansas Angus Association • Membership List

- |  |  |
|--|--|
| Lowell Abney, Brookland, AR              | Steve Long, Pleasant Plains, AR              |
| Thomas Asher, Pomona, MO                 | Charles A. "Ed" Mabry, Batesville, AR        |
| Glen Ballard, Cave City, AR              | Becky March, Doniphan, MO                    |
| Jeff Barnett, Hardy, AR                  | Tarry Marlal, Fort Smith, AR                 |
| Ruth Bonds, Mountain View, AR            | Wayne Marquis, Poplar Bluff, MO              |
| Steve Bone, Clinton, AR                  | Jason Martin, Paragould, AR                  |
| Josh Brand, Imboden, AR                  | Billy E. Maxwell, Black Rock, AR             |
| Brad Brown, Somerville, TN               | Roger Meyer, Koshkonong, MO                  |
| Patricia A. Burge, West Plains, MO       | Keith Mikel, Paragould, AR                   |
| Britt Camp, Paragould, AR                | Junior Miller, Batesville, AR                |
| James "Jim" Clayton, Brookland, AR       | Donald F. Miller, Searcy, AR                 |
| William E. Coe, Batesville, AR           | Ralph Myers III, McCrory, AR                 |
| Joe Corbin, Tecumseh, MO                 | Eric Newberry, Paragould, AR                 |
| Sanford D. Cothren, Rosebud, AR          | Dustin Nichols, Parma, AR                    |
| Alvin Cox, Paragould, AR                 | Michael Parnell, Yellville, AR               |
| Marcus Creasy, Drasco, AR                | Rondle Parnell, Searcy, AR                   |
| Oscar Crofford, Melbourne, AR            | Sam Powell, Malden, MO                       |
| Jerry Cross, Paragould, AR               | Doyle Ragland, Marshall, AR                  |
| William G. "Bill" Davis, Concord, AR     | Don Rainbolt, Leslie, AR                     |
| Margaret Davis, Concord, AR              | Bob Ramsey, Conway, AR                       |
| Ray Davis, Fayetteville, AR              | Truman L. Redwine, Maynard, AR               |
| William Davis, Bay, AR                   | Mark Satterfield, Norfolk, AR                |
| Al DeClerk, Pochontas, AR                | Gerald Shackelford, Poplar Bluff, MO         |
| Victoria Whitlock DeClerk, Pochontas, AR | Jarvene Shackelford, Ripley, MS              |
| J.W. Dial, Paragould, AR                 | Pam Shelton, Scotland, AR                    |
| John Dunman, Trumann, AR                 | Dickie Smith, Black Rock, AR                 |
| Nathan Dunman, Keiser, AR                | Charles "Buddy" Smith, Paragould, AR         |
| Luke & Stan Foster, Paragould, AR        | Kelly Smith, West Plains, MO                 |
| Jody Fulper, Booneville, MS              | Stan, Angela & Landon Smith, West Plains, MO |
| Michael Gadberry, Hattiesville, AR       | Harmon Smith, DVM, Wynne, AR                 |
| Jordan Gilreath, Somerville, TN          | Gregory Spaunhorst, Paragould, AR            |
| Richie Gray, Dardanelle, AR              | Stacey Speer, Marmaduke, AR                  |
| Stacy Guffey, Bakersfield, MO            | Christina Spencer, Powhatan, AR              |
| Sam Haley, Quitman, AR                   | William Boyd Spencer, Caulfield, MO          |
| Jerry Hall, Damascus, AR                 | Joe Spradlin, Bald Knob, AR                  |
| Wade Hall, Clinton, AR                   | Kevin Stair, Drasco, AR                      |
| David Heileman, Jonesboro, AR            | Trudy Stair, Drasco, AR                      |
| Harrie Leigh Hill, Paragould, AR         | Jolene Staker, Quitman, AR                   |
| Tommy R. Hill, Paragould, AR             | Joe Stephens, Kenton, TN                     |
| Patricia Horner, Salem, AR               | Dustin Tackett, Dover, AR                    |
| Rich Horner, Salem, AR                   | Pam Taylor, Mt. Pleasant, AR                 |
| Ron Hubbard, Leslie, AR                  | Lester Taylor, Mt. Pleasant, AR              |
| Ray Hudson, Searcy, AR                   | Hayden Taylor, Williford, AR                 |
| Tom Huls, Lincoln, AR                    | Bob Thornton, Ward, AR                       |
| Jason Jackson, Williford, AR             | Doug Thornton, Carlisle, AR                  |
| Shirley Jautz, Pomona, MO                | Nick Thomas, Bartlett, TN                    |
| John D. Johnson, Pochontas, AR           | Will Tippit, Somerville, TN                  |
| Tom Jones, Little Rock, AR               | Cheri Tweedy, Imboden, AR                    |
| Ronnie Koch, North Little Rock, AR       | Tom Vanenburg, Desha, AR                     |
| Tommy Jumper, Paragould, AR              | Theodore "Ted" Warren, Harrison, AR          |
| Isaac Jumper, Paragould, AR              | Rex Whitfield, Pineville, AR                 |
| Emma Jumper, Paragould, AR               | Scott Wingert, Rosebud, AR                   |
| Glen Kerlin, Batesville, AR              | Troy & Amye Winger, Bartlett, TN             |
| Sam Kirkland, Caulfield, MO              | Emily & Alyson Woodard, Black Rock, AR       |
| Harold Lewis, Carlisle, AR               | Charles W. Yancey, Horseshoe Bend, AR        |

www.neaaa.org



### Northeast Arkansas Angus Association Membership Application

Name \_\_\_\_\_

Spouse Name \_\_\_\_\_

Farm Name \_\_\_\_\_

Address \_\_\_\_\_

City \_\_\_\_\_

State \_\_\_\_\_

Zip \_\_\_\_\_

Phone \_\_\_\_\_

E-mail Address \_\_\_\_\_

Membership Fees: \$25

Send Application To: Bill Maxwell • P.O. Box 125, Black Rock, AR 72415



American Livestock Brokers  
Jarvene Shackelford, Auctioneer #573  
20971 Hwy. 4 East • Ripley, MS 38663  
Office: 662-837-4904 • Mobile: 662-837-1776  
E-mail: alb@albauction.com  
www.albauction.com

PRSR  
FIRST CLASS  
U.S. POSTAGE  
**PAID**  
St. Joseph, MO  
Permit #2017

## First Class To:



[www.neaaa.org](http://www.neaaa.org)

**November 15,  
2014**

**Charlotte, Arkansas**

