



**Rogers Bar HR
Fall
“Turn-Out”
Charolais Bull Sale
2015**

Saturday, October 17, 2015
Collins, Mississippi
At the Ranch - 12:30 p.m.



Rogers Bar HR

Ranching Since 1926

1-800-343-5051

P.O. Box 1718 / Collins, Mississippi 39428

GENERAL INFORMATION

DAY, DATE, TIME: Saturday
October 17, 2015
12:30 p.m.

SALE LOCATION: Rogers Bar HR Ranch
Collins, Mississippi
(601) 765-8848
(800) 343-5051

SALE HEADQUARTERS: Collins Inn & Suites
Phone: (601) 765-0800

TRUCKING: Arrangements can be made at the sale.

AUCTIONEER: Tommy Barnes
189 River Road
Lowndesboro, Alabama 36752
(334) 462-4004

RINGMEN
Floyd Wampler
Charolais Journal
(423) 612-2144

Luke Mobley
Cattle Business in MS

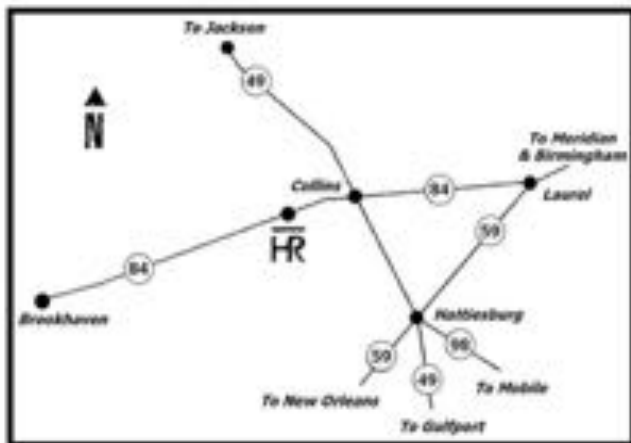
Justin Stout
The Stock Exchange

Bubba Nelson
Cattle Today

RANCH MANAGER: Doug Rogers
(601) 765-8848 (office)
(601) 765-7751 (mobile)

Schedule of Events

Friday	1:00-6:00	View Sale Cattle (In Pasture)
Saturday	9:00-12:00	View Sale Cattle
	11:00-12:15	Complimentary Lunch
	12:30	Turn-Out Bull Sale Begins
Approximately 1:30		Commercial Brangus Sale



Dear Cattleman,

I would like to welcome you to Rogers Bar HR. My father started the Charolais herd in 1959 with the emphasis on important economic traits. The traits of calving ease, high weaning weights, and ease of keeping are always on the front of our mind when we are breeding and developing our cattle. But the most important thing that we have done has been to develop these traits on GRASS. Our bulls will not fall apart on you when you turn them out. Even though we have developed our herd on grass, they excel when placed on feed tests or in the feedlots. **We have won more BIF tests than any other Charolais breeder in the nation!** And we did it again this year by winning both the Florida Bull Test and the Hinds Bull Test. Our herd is not one that we bought and then tried to adapt to the Southeast. Our herd was developed over the last half century on the rolling hills of southeast Mississippi and after 56 years we feel that we have developed the best herd of Charolais in the Southeast and the United States. These efforts are evident in the 10 Trait leaders that we have this year in the Charolais breed.

We have the selling philosophy of wanting to sell you a bull today, but we also want to sell you one when you replace him. That was one of the best lessons my father ever taught me. Our goal is to produce cattle that will put the most pounds on the quickest and the most efficiently... and we have been doing just that! Our cattle gain well on feed, but also on grass. More pounds at weaning means more money in your pocket!

The cattle market is the best it has ever been! A 725 lb. steer will bring you \$1,443!!! The US cow herd is the smallest since the 1930's. The economy is looking up and agriculture exports are also up. You can get your cattle bigger and they do not discount them for being large because gain is cheaper on grass than in the feed yard. Feeder cattle prices are at record highs. Today is the time to improve and enlarge your herd to take advantage of this economic situation.

We have had great demand for our bulls. Why? Because people are trading in their smaller black bulls and putting our Charolais bulls on their cows and are having fantastic results. They are having calves that grow and fit the market. With the instability of corn prices, feedlots want a calf that will grade select with as little corn as possible, and Charolais cross calves do just that.

If you need help selecting a bull, or if you have any questions, please give me a call at (601) 765-7751. Our philosophy is we want to sell you a bull not only today, but also tomorrow.

Yours for Better Charolais,

Doug Rogers

Rogers Bar HR Produced 10 Trait Leaders in 2014

The first question I would ask is “what is a trait leader?” A trait leader is a bull that has the highest performance in a particular trait with a high level of accuracy. For example, HBR Profit 729 is a weaning weight trait leader. That means that his calves are some of the fastest growing calves in the Charolais Breed!!! So if one of the bulls listed below is in a bull’s pedigree you should feel very confident in that bull’s performance. Last year we had two bulls that were Multiple Trait Leaders. These are very special bulls. These bulls had high growth in combination with low birth.

Weaning Weight Trait leaders

HBR Profit 729 P

HBR Profit 639 P

HBR Magnum 93 P (Leader 3 times)

HEP Auto Pilot 101 P (Leader 2 times)

Maternal Milk

HBR Magnum 93 P

HBR Program 297 P

Maternal Calving Ease

HBR Magnum 93 P

Ribeye Area

HBR Program 297 P

Carcass Fat

HBR Program 297 P

Marbling

HBR Program 297 P

Multiple Trait Leaders

HBR Cannon 2250 P

HBR Profit 554 P

Understanding EPDs

Expected Progeny Differences (EPDs)

The expected differences in performance of a bull's progeny when compared to the average progeny performance of all bulls of the breed evaluated. EPDs are reported in pounds and are directly comparable across all herds within a breed, but not across breeds. Most knowledgeable people agree this is the most accurate way to evaluate cattle. **We have been performance testing for 56 years, and as you would expect, our EPDs are more accurate than most.**

Birth Weight EPD (BW)

Birth weight EPDs predict the difference in average birth weights of a bull's calves compared to calves of other bulls. A positive value indicates heavier than average birth weights, while a negative value indicates lighter than average birth weights. This figure is more reliable than actual birth weight of the bull.

Weaning Weight EPD (WW)

Weaning weight EPDs predict the difference in average 205-day weights of a bull's calves, compared to calves of all other bulls evaluated. A positive value indicates heavier than average weaning weights while a negative value indicates lighter than average weaning weights. This figure is important if you sell calves at weaning.

Yearling Weights EPD (YW)

Yearling weights EPDs predict the differences in average 365-day weight of a bull's progeny compared to progeny of all other bulls evaluated. Positive values indicate heavier than average yearling weights, while negative values indicate lighter than average yearling weights. This figure is especially important if you own your cattle through the feedlot.

Milk

Pure Milk EPDs predict the difference due to milking ability in average 205-day weights of a bull's daughters' calves compared to calves of all other bulls evaluated. Positive values indicate above average milking ability of daughters, while negative values indicate below average milking ability. We have the best milking Charolais herd in the nation. If you are saving daughters to go back in your herd, this is important. If you are using the bull as a terminal cross (keeping no heifers) this is not important.

Total Maternal (TM)

Total Maternal EPD factors in milk plus growth of a bull's progeny. If you are saving a bull's daughters to go back in your herd, it is very important.

Lot 1

HBR Lo-Hi 967 P
E4C P814 Mr High Point
HBR Lady Magnum 814 P

HBR High Point 698 P

HBR Lo-Hi 967 P
E4C Lady Duke
HBR Lady Duke 155 P

DOB: 3/28/13

Polled

BIRTH		WWR			SCROT CIR	
65		83			38	
2015	BW	WW	YW	MILK	TM	
EPDs	-4.3	14	22	12	19	

Lot 2

HBR Magnum 93 P
HBR Magnum 427 P ET
HBR Lady GI 207 P ET

HBR Magnum 559 P

HBR Magnum 427 P ET
JEW MaggieY03
PSF Lady Duke 603

DOB: 7/21/13

Polled

BIRTH		WWR			SCROT CIR	
74		99			41.5	
2015	BW	WW	YW	MILK	TM	
EPDs	2.0	27	45	15	29	

Lot 3

HEP Auto Pilot 101H ET
HBR Auto Pilot 977 P
HBR Lady Magnum 455 P

HBR Auto Pilot 8330

HBR Fasttrack 144 P
VWC Lady Fasttrack S40
VWC Maggie 940

DOB: 9/7/13

Dehorned

BIRTH		WWR			SCROT CIR	
60		100			40	
2015	BW	WW	YW	MILK	TM	
EPDs	0.3	30	52	18	33	



Lots 3 and 24



Lot 4



Lot 7

Lot 4

WCR Sir Duke 815
HBR Magnum 93 P
HBR Lady Performer 915 P

HBR Magnum 172 P

HBR Profit 672 P
HBR Lady Profit 114 P
HBR Lady Auto Pilot 834 P

DOB: 9/14/13

Polled

BIRTH		WWR		SCROT CIR	
74		98		38.5	
2015	BW	WW	YW	MILK	TM
EPDs	1.8	37	61	18	37

Lot 5

HBR Equalizer 941 P ET
HBR Equalizer 402 P
HBR Dorothy 641 P

HBR Equalizer 8331 P

HBR Profit 639 P
VWC Lady Magnum 1131
VWC Lady Magnum 9152

DOB: 9/16/13

Polled

BIRTH		WWR		SCROT CIR	
45		100		39	
2015	BW	WW	YW	MILK	TM
EPDs	-1.7	33	59	20	36

Lot 6

HEP Auto Pilot 101H ET
HBR Auto Pilot 977 P
HBR Lady Magnum 455 P

HBR Auto Pilot 8332 P

HBR Profit 543 P
VWC Lady Shadowbrook 1039
VWM Maggie P64

DOB: 9/18/13

Polled

BIRTH		WWR		SCROT CIR	
70		100		36.5	
2015	BW	WW	YW	MILK	TM
EPDs	2.8	32	58	18	34

Lot 7

HEP Auto Pilot 101H ET
HBR Auto Pilot 977 P
HBR Lady Magnum 455 P

HBR Auto Pilot 8333 P

HBR Multi 151 P ET
VWC Duchess S20
VWC PRG M11

DOB: 9/21/13

Polled

BIRTH		WWR		SCROT CIR	
75		100		40	
2015	BW	WW	YW	MILK	TM
EPDs	2.7	30	54	23	37

Lot 8

HEP Auto Pilot 101H ET
HBR Auto Pilot 977 P
HBR Lady Magnum 455 P

HBR Auto Pilot 8334

HBR Magnum 436 P
VWC Maggie R05
VWC Rose 070

DOB: 9/22/13

Dehorned

BIRTH		WWR		SCROT CIR	
75		100		46	
2015	BW	WW	YW	MILK	TM
EPDs	3.8	32	57	22	38

Lot 9

SC Shadowbrook 416 ET
HBR Profit 729 P
HBR Lady Program 448 P

HBR Profit 8335 P

HBR Profit 543 P
VWC Profit W32
VWC Duchess S16

DOB: 9/28/13

Polled

BIRTH		WWR		SCROT CIR	
80		100		37	
2015	BW	WW	YW	MILK	TM
EPDs	3.7	32	56	14	31

Lot 10

HEP Auto Pilot 101H ET
HBR Auto Pilot 977 P
HBR Lady Magnum 455 P

HBR Auto Pilot 8336 P

HBR Program 10 P
VWC Program R07
VWC Duchess 141

DOB: 9/28/13

Polled

BIRTH		WWR		SCROT CIR	
80		100		38	
2015 EPDs	BW	WW	YW	MILK	TM
	3.4	24	44	22	34

Lot 11

HEP Auto Pilot 101H ET
HBR Auto Pilot 977 P
HBR Lady Magnum 455 P

HBR Auto Pilot 8338 P

HBR Multi 151 P ET
VWC Duchess S16
VWC 729

DOB: 10/2/13

Polled

BIRTH		WWR		SCROT CIR	
80		105		42	
2015 EPDs	BW	WW	YW	MILK	TM
	2.0	22	44	21	32

Lot 12

HBR Equalizer 402 P
HBR Equalizer 982 P
HBR Dorothy 641 P

HBR Equalizer 8339 P

HBR Profit 639 P
VWC Lady Magnum 1201
VWC Lady Program S14

DOB: 10/4/13

Polled

BIRTH		WWR		SCROT CIR	
70		95		37	
2015 EPDs	BW	WW	YW	MILK	TM
	1.5	24	44	20	32

Lot 13

HEP Auto Pilot 101H ET
HBR Auto Pilot 977 P
HBR Lady Magnum 455 P

HBR Auto Pilot 8341 P

HBR Auto Pilot 282 P
VWC Lady Autopilot 1047
VWC Lady Shadow T11

DOB: 10/7/13

Polled

BIRTH		WWR		SCROT CIR	
75		100		43	
2015	BW	WW	YW	MILK	TM
EPDs	2.1	35	66	22	39

Lot 14

SC Shadowbrook 416 ET
HBR Profit 729 P
HBR Lady Program 448 P

HBR Profit 8343 P

CC Master Mac 01P
VWC Comp 119
NTF Brazilia 161

DOB: 10/9/13

Polled

BIRTH		WWR		SCROT CIR	
60		98		38	
2015	BW	WW	YW	MILK	TM
EPDs	-0.2	27	48	15	28

Lot 15

HBR Equalizer 402 P
HBR Equalizer 915 P
HBR Lady Profit 760 P

HBR Equalizer 8344 P

HBR Multi 151 P ET
VWC Duchess S46
VWC 815

DOB: 10/13/13

Polled

BIRTH		WWR		SCROT CIR	
75		98		41	
2015	BW	WW	YW	MILK	TM
EPDs	0.7	26	47	18	31

Lot 16

HEP Auto Pilot 101H ET
HBR Auto Pilot 977 P
HBR Lady Magnum 455 P

HBR Auto Pilot 8345 P

HBR Thunder 894P
VWC Lady Thunder S36
VWC Donna 006

DOB: 10/14/13

Polled

BIRTH		WWR		SCROT CIR	
85		107		41.5	
2015	BW	WW	YW	MILK	TM
EPDs	3.8	33	58	16	33

Lot 17

HEP Auto Pilot 101H ET
HBR Auto Pilot 714 P
HBR Lady Equalizer 409 P

HBR Auto Pilot 195 P

HBR Cannon 2250 ET
HBR Lady Cannon 666 P
HBR Lady Magnum 604 P

DOB: 10/19/13

Polled

BIRTH		WWR		SCROT CIR	
94		100		34.5	
2015	BW	WW	YW	MILK	TM
EPDs	5.0	33	57	23	40

Lot 18

SC Shadowbrook 416 ET
HBR Profit 729 P
HBR Lady Program 448 P

HBR Profit 8347 P

HBR Profit 543 P
VWC Profit W48
VWC Lady Thunder S34

DOB: 10/20/13

Polled

BIRTH		WWR		SCROT CIR	
80		99		36	
2015	BW	WW	YW	MILK	TM
EPDs	3.0	38	64	14	33

Lot 19

SC Shadowbrook 416 ET
HBR Profit 729 P
HBR Lady Program 448 P

HBR Profit 8348

HBR Profit 543 P
VWC Profit W51
VWC Duchess S20

DOB: 10/22/13

Dehorned

BIRTH		WWR		SCROT CIR	
75		93		39.5	
2015 EPDs	BW	WW	YW	MILK	TM
	2.5	33	56	17	33

Lot 20

HEP Auto Pilot 101H ET
HBR Auto Pilot 977 P
HBR Lady Magnum 455 P

HBR Auto Pilot 8349 P

HBR Program 297 P
HBR Lady Program 312 P
HBR Lady Magnum 689 P

DOB: 10/23/13

Polled

BIRTH		WWR		SCROT CIR	
80		94		36	
2015 EPDs	BW	WW	YW	MILK	TM
	2.9	29	50	20	35

Lot 21

HBR Equalizer 402 P
HBR Equalizer 982 P
HBR Dorothy 641 P

HBR Equalizer 8350 P

HBR Profit 639 P
VWC Lady Magnum 1213
HBR Lady Pilot 364 P

DOB: 10/23/13

Polled

BIRTH		WWR		SCROT CIR	
70		98		38	
2015 EPDs	BW	WW	YW	MILK	TM
	1.8	33	61	19	36

Lot 22

SC Shadowbrook 416 ET
HBR Profit 729 P
HBR Lady Program 448 P

HBR Profit 8351 P

AC Duke 9121 PLD
VWC Duchess M22
Miss Josie

DOB: 10/23/13

Polled

BIRTH		WWR		SCROT CIR	
75		102		40	
2015 EPDs	BW	WW	YW	MILK	TM
	2.2	33	51	9	25

Lot 23

HBR Cannon 2250 ET
HBR Cannon 017 P
HBR Lady Magnum 319 P

HBR Cannon 201 P

HBR Program 7041
HBR Lady Program 159 P
HBR Lady Magnum 755 P

DOB: 10/27/13

Polled

BIRTH		WWR		SCROT CIR	
80		98		39.5	
2015 EPDs	BW	WW	YW	MILK	TM
	3.6	32	57	23	39

Lot 24

HEP Auto Pilot 101H ET
HBR Auto Pilot 977 P
HBR Lady Magnum 455 P

HBR Auto Pilot 8353 P

SC Shadowbrook 416 ET
VWC Lady Shadow T11
VWC Duchess P38

DOB: 10/30/13

Polled

BIRTH		WWR		SCROT CIR	
80		101		44.5	
2015 EPDs	BW	WW	YW	MILK	TM
	3.1	33	61	23	39



Lot 11



Lot 21



Lot 26 and 38

Lot 25

HEP Auto Pilot 101H ET
HBR Auto Pilot 977 P
HBR Lady Magnum 455 P

HBR Auto Pilot 8373 P

HBR Magnum 427 P ET
VWC Lady Magnum 9159
HBR Lady Big Mack 403 P

DOB: 11/1/13

Polled

BIRTH		WWR		SCROT CIR	
80		96		36.5	
2015 EPDs	BW	WW	YW	MILK	TM
	1.9	26	48	21	35

Lot 26

SC Shadowbrook 416 ET
HBR Profit 729 P
HBR Lady Program 448 P

HBR Profit 8354 P

HBR Magnum 542 P
HBR Lady Magnum 371 P
JWK Darla H020

DOB: 11/3/13

Polled

BIRTH		WWR		SCROT CIR	
75		90		42.5	
2015 EPDs	BW	WW	YW	MILK	TM
	1.7	36	58	12	30

Lot 27

HBR Cannon ET
HBR Cannon 602 P
HBR Lady Magnum 850 P

HBR Cannon 210 P/S

HBR Magnum 514 P ET
HBR Lady Magnum 023 P
HBR Lady Program 624P TW

DOB: 11/4/13

Scurs

BIRTH		WWR		SCROT CIR	
80		97		36.5	
2015 EPDs	BW	WW	YW	MILK	TM
	3.4	32	53	21	37

Lot 28

Baldrige Kojack 29K
HBR Harlan's Keystone 016 P
HBR Lady Cannon 847 P

HBR Keystone 691

SCC Charlie P32
MCF Juggernaut T21 P TW
MCF MS Juggernaut R15 PET

DOB: 11/5/13

Polled

BIRTH		WWR			SCROT CIR	
66		103			36.5	
2015	BW	WW	YW	MILK	TM	
EPDs	1.8	34	61	16	32	

Lot 29

Baldrige Kojack 29K
HBR Harlan's Keystone 016 P
HBR Lady Cannon 847 P

HBR Keystone 693 P

LHD Flawless R1538 PLD
TC Miss Flawless Choice
TC Miss Choice S07

DOB: 11/5/13

Polled

BIRTH		WWR			SCROT CIR	
65		97			40.5	
2015	BW	WW	YW	MILK	TM	
EPDs	0.9	35	51	17	34	

Lot 30

HEP Auto Pilot 101H ET
HBR Auto Pilot 977 P
HBR Lady Magnum 455 P

HBR Auto Pilot 8355 P

HBR Multi 151 P ET
VWC Duchess S10
VWC Maggie N831

DOB: 11/6/13

Polled

BIRTH		WWR			SCROT CIR	
75		95			38	
2015	BW	WW	YW	MILK	TM	
EPDs	1.7	24	46	24	36	

Lot 31

SC Shadowbrook 416 ET
HBR Profit 729 P
HBR Lady Program 448 P

HBR Profit 8356 P

SC Shadowbrook 416 Et
VWC Lady Shadowbrook S58
VWC Duchess P52

DOB: 11/8/13

Polled

BIRTH		WWR		SCROT CIR	
80		102		41	
2015	BW	WW	YW	MILK	TM
EPDs	3.2	39	66	18	37

Lot 32

WCR Sir T 8007
WCR Power T 2375 Polled
WCR Miss Powerpoint 9908

HBR Power T 212 P

HBR Cannon 2250 ET
HBR Lady Cannon 011 P
HBR Lady Auto Pilot 227P

DOB: 4/5/14

Polled

BIRTH		WWR		SCROT CIR	
80		100		40	
2015	BW	WW	YW	MILK	TM
EPDs	2.7	32	58	19	35

Lot 33

HBR Program 218 P
HBR Program 7041
HBR Lady Program 539P

HBR Program 213 P

HBR Cannon 602 P
HBR Lady Cannon 037 P
HBR Lady Magnum 319 P

DOB: 11/14/13

Polled

BIRTH		WWR		SCROT CIR	
74		92		40.5	
2015	BW	WW	YW	MILK	TM
EPDs	2.8	31	54	25	40



Lot 34



Lot 35



Lot 38

Lot 34

HBR Big Mack 408 P Et
HBR Big Mack 983 P
HBR Lady Program 874 P

HBR Big Mack 218 P

HBR Cannon 36 P
CC Lady Performer 239 P
CC Lady Cate 919 P

DOB: 11/20/13

Polled

BIRTH		WWR		SCROT CIR	
68		96		38.5	
2015	BW	WW	YW	MILK	TM
EPDs	0.1	26	47	17	30

Lot 35

HBR Program 218 P
HBR Program 7041
HBR Lady Program 539P

HBR Program 219 P

SC Shadowbrook 416 ET
HBR Lady Profit 10 P
HBR Lady Equalizer 600P

DOB: 11/21/13

Polled

BIRTH		WWR		SCROT CIR	
76		98		40	
2015	BW	WW	YW	MILK	TM
EPDs	3.0	36	64	24	42

Lot 36

HBR Big Mack 408 P ET
HBR Big Mack 906 P
HBR Lady Magnum 749 P

HBR Big Mack 8357 P

HBR Program 10 P
VWC Lady Program S19
VWC Duchess 144

DOB: 11/21/13

Polled

BIRTH		WWR		SCROT CIR	
75		99		37	
2015	BW	WW	YW	MILK	TM
EPDs	2.4	17	31	21	30

Lot 37

HEP Auto Pilot 101H ET
HBR Auto Pilot 941 P
HBR Lady Program 673P ET

HBR Auto Pilot 222 P

HBR Cannon 2250 ET
HBR Lady Cannon 949 P TW
HBR Lady Program 326 P

DOB: 11/14/13

Polled

BIRTH		WWR		SCROT CIR	
78		101		40	
2015 EPDs	BW	WW	YW	MILK	TM
	2.9	41	71	21	42

Lot 38

HBR Equalizer 402 P
HBR Equalizer 915 P
HBR Lady Profit 760 P

HBR Equalizer 8361 P

HBR Magnum 379 P TW
VWC Maggie W15
VWC Maggie 047

DOB: 11/24/13

Polled

BIRTH		WWR		SCROT CIR	
80		104		37	
2015 EPDs	BW	WW	YW	MILK	TM
	2.9	31	52	17	33

Lot 39

HBR Big Mack 408 P ET
HBR Big Mack 906 P
HBR Lady Magnum 749 P

HBR Big Mack 8362 P

HBR Program 8362 P
VWC Lady Program S18
VWC Jessie 706

DOB: 11/24/13

Polled

BIRTH		WWR		SCROT CIR	
85		109		36	
2015 EPDs	BW	WW	YW	MILK	TM
	3.6	26	45	18	32

Lot 40

HBR Program 218 P
HBR Program 7041
HBR Lady Program 539P

HBR Program 225 P

HBR Big Mack 408 P ET
HBR Lady Big Mack 055 P
HBR Lady Equalizer 456 P

DOB: 11/26/13

Polled

BIRTH		WWR		SCROT CIR	
82		93		40	
2015	BW	WW	YW	MILK	TM
EPDs	3.5	32	58	23	39

Lot 41

HBR Equalizer 402 P
HBR Equalizer 982 P
HBR Dorothy 641 P

HBR Equalizer 8364 P

HBR Profit 639 P
VWC Lady Magnum 1132
VWC Lady Thunder S34

DOB: 11/27/13

Polled

BIRTH		WWR		SCROT CIR	
75		115		41	
2015	BW	WW	YW	MILK	TM
EPDs	2.9	41	71	17	37

Lot 42

HBR Big Mack 408 P ET
HBR Big Mack 906 P
HBR Lady Magnum 749 P

HBR Big Mack 8365 P

HBR Magnum 379 P TW
VWC Maggie W23
VWC Lady Thunder P801

DOB: 11/27/13

Polled

BIRTH		WWR		SCROT CIR	
80		86		38.5	
2015	BW	WW	YW	MILK	TM
EPDs	3.9	20	37	19	29

Lot 43

HBR Magnum 118 P
HBR Magnum 625 P/S
HBR Lady Equalizer 409 P

HBR Magnum 226 P

HBR Cannon 2251 P/S ET
HBR Lady Cannon 047 P
HBR Dolly 869 P

DOB: 11/28/13

Polled

BIRTH		WWR		SCROT CIR	
72		98		40	
2015 EPDs	BW	WW	YW	MILK	TM
	1.8	27	47	19	33

Lot 44

HBR Equalizer 402 P
HBR Equalizer 982 P
HBR Dorothy 641 P

HBR Equalizer 8366 P

HBR Magnum 379 P TW
VWC Lady Magnum 1112
VWC Lady Shadowbrook S59

DOB: 11/30/13

Polled

BIRTH		WWR		SCROT CIR	
70		92		35	
2015 EPDs	BW	WW	YW	MILK	TM
	1.0	26	48	21	34

Lot 45

HBR Big Mack 408 P ET
HBR Big Mack 983 P
HBR Lady Program 874 P

HBR Big Mack 230 P

HBR Profit 554 P
CC Lady Brook 232
CC Lady Kate 709

DOB: 12/2/13

Polled

BIRTH		WWR		SCROT CIR	
78		110		39	
2015 EPDs	BW	WW	YW	MILK	TM
	2.8	36	64	18	36

Lot 46

HEP Auto Pilot 101H ET
HBR Auto Pilot 941 P
HBR Lady Program 673P ET

HBR Auto Pilot 232 P

SC Shadowbrook 449 ET
HBR Profit 925 P
HBR Lady Magnum 463 P

DOB: 12/2/13

Polled

BIRTH		WWR		SCROT CIR	
76		100		34	
2015 EPDs	BW	WW	YW	MILK	TM
	2.4	46	78	17	40

Lot 47

HBR Magnum 342 P ET
HBR Magnum 923 P
HBR Lady Program 734 P

HBR Magnum 233 P

HBR Cannon 2250 ET
HBR Lady Cannon 964 P
HBR Lady Auto 612 P

DOB: 12/3/13

Polled

BIRTH		WWR		SCROT CIR	
72		98		34	
2015 EPDs	BW	WW	YW	MILK	TM
	2.0	33	60	21	37

Lot 48

HBR Profit 549 P
CC Sir Profit 101 P
HEP Miss Joan 35R

HBR Profit 235 P

ASC Eliminator 032
PI962 Tracy P962
MV MS 2244 Flash 420 P

DOB: 12/5/13

Polled

BIRTH		WWR		SCROT CIR	
78		100		37.5	
2015 EPDs	BW	WW	YW	MILK	TM
	0.9	23	41	18	29

Lot 49

HBR Cannon 2250 Et
HBR Cannon 614 P
HBR Lady Magnum 98 P

HBR Cannon 341 P

HBR Program 297 P
HBR-Desco Pat 04 PET
HBR Lady Magnum 850 P

DOB: 12/6/13

Polled

BIRTH		WWR		SCROT CIR	
108		99		36	
2015	BW	WW	YW	MILK	TM
EPDs	3.0	35	57	21	39

Lot 50

HBR Cannon 2250 ET
HBR Cannon 614 P
HBR Lady Magnum 98 P

HBR Cannon 340 P

Baldrige Fasttrack 82F
DES Fast Lady 801 PLD
MCF MS Lady Mack H41 PET

DOB: 12/7/13

Polled

BIRTH		WWR		SCROT CIR	
111		101		39	
2015	BW	WW	YW	MILK	TM
EPDs	1.8	36	59	14	32

Lot 51

HBR Cannon 2250 ET
HBR Cannon 602 P
HBR Lady Magnum 850 P

HBR Cannon 238 P

HEP Auto Pilot 101H ET
HBR Lady Auto Pilot 062 P
HBR Lady Duke 606 P

DOB: 12/8/13

Polled

BIRTH		WWR		SCROT CIR	
80		103		36.5	
2015	BW	WW	YW	MILK	TM
EPDs	4.0	38	67	23	42



Lot 45



Lot 48 and 77



Lot 65 and 69



Lot 49



Lot 49, 52, 55, and 57



Lot 52

Lot 52

HEP Auto Pilot 101H ET
HBR Auto Pilot 977 P
HBR Lady Magnum 455 P

HBR Auto Pilot 8367 P

SC Shadowbrook 416 ET
VWC Lady Shadowbrook S57
VWC Duchess P41

DOB: 12/9/13

Polled

BIRTH		WWR		SCROT CIR	
75		100		38	
2015	BW	WW	YW	MILK	TM
EPDs	2.2	30	55	21	36

Lot 53

HBR Big Mack 408 P ET
HBR Big Mack 983 P
HBR Lady Program 874 P

HBR Big Mack 242 P

HBR Profit 554 P
CC Lady Brook 222 P
CC Lady Kate 813 P

DOB: 12/12/13

Polled

BIRTH		WWR		SCROT CIR	
54		100		34.5	
2015	BW	WW	YW	MILK	TM
EPDs	-1.9	21	41	18	28

Lot 54

HBR Equalizer 402 P
HBR Equalizer 915 P
HBR Lady Profit 760 P

HBR Equalizer 8368 P

HEP Auto Pilot 101H ET
HBR Lady Pilot 364 P
HBR Lady Gainer 989 P

DOB: 12/16/13

Polled

BIRTH		WWR		SCROT CIR	
75		102		36.5	
2015	BW	WW	YW	MILK	TM
EPDs	2.6	34	61	19	36

Lot 55

Baldrige Kojack 29K
HBR Harlan's Keystone 016 P
HBR Lady Cannon 847 P

HBR Keystone 244 P

SC Shadowbrook 449 ET
HBR Lady Profit 1/10 P
HBR Lady Program 745 P

DOB: 12/17/13

Polled

BIRTH		WWR		SCROT CIR	
76		92		33	
2015	BW	WW	YW	MILK	TM
EPDs	2.0	40	67	18	38

Lot 56

Baldrige Kojack 29K
HBR Harlan's Keystone 016 P
HBR Lady Cannon 847 P

HBR Keystone 245 P

HBR Profit 782 P
HBR Lady Profit 1209
VWC Lady Pilot W22

DOB: 12/17/13

Polled

BIRTH		WWR		SCROT CIR	
68		106		37	
2015	BW	WW	YW	MILK	TM
EPDs	1.3	40	68	22	42

Lot 57

HBR Program 297 P
HBR Program 797 ET
HBR Lady Magnum 319 P

HBR Program 247 P

HBR Profit 729 P
HBR Lady Profit 186 P
HBR Lady Magnum 732 P

DOB: 12/20/13

Polled

BIRTH		WWR		SCROT CIR	
66		100		31.5	
2015	BW	WW	YW	MILK	TM
EPDs	1.0	29	49	19	33

Lot 58

HEP Auto Pilot 101H ET
HBR Auto Pilot 977 P
HBR Lady Magnum 455 P

HBR Auto Pilot 8358 P

HBR Profit 608 P
VWC Lady Shadowbrook 1053
HBR Lady Pro-Grow 369 P

DOB: 12/22/13 Polled

BIRTH		WWR			SCROT CIR	
80		91			35.5	
2015 EPDs	BW	WW	YW	MILK	TM	
	2.8	31	55	16	31	

Lot 59

HBR Cannon 2250 ET
HBR Cannon 017 P
HBR Lady Magnum 319 P

HBR Cannon 249 P

SC Shadowbrook 449 ET
HBR Lady Profit 1/5 P
HBR Miss Complete 527P

DOB: 12/23/13 Polled

BIRTH		WWR			SCROT CIR	
70		121			37	
2015 EPDs	BW	WW	YW	MILK	TM	
	1.8	43	71	18	40	

Lot 60

HBR Program 297 P
HBR Program 797 ET
HBR Lady Magnum 319 P

HBR Program 250 P/S

HBR Profit 729 P
HBR Lady Profit 180 P
KCC Ms Right Flash 674P

DOB: 12/24/13 Scurs

BIRTH		WWR			SCROT CIR	
78		113			36.5	
2015 EPDs	BW	WW	YW	MILK	TM	
	3.6	39	66	18	37	

Lot 61

HBR Program 297 P
HBR Program 797 ET
HBR Lady Magnum 319 P

HBR Program 254 P

HBR Cannon 690 P
HBR Lady Cannon 1140 P
VWC Profit W31

DOB: 12/26/13

Polled

BIRTH		WWR		SCROT CIR	
68		100		36	
2015 EPDs	BW	WW	YW	MILK	TM
	1.4	32	55	18	34

Lot 62

HBR Program 7041
HBR Program 11 P
HBR Lady Profit 806 P

HBR Program 8369 P

HBR Magnum 379 P TW
VWC Magge W11
VWC PRG 175

DOB: 12/26/13

Polled

BIRTH		WWR		SCROT CIR	
75		104		33.5	
2015 EPDs	BW	WW	YW	MILK	TM
	2.3	40	66	19	39

Lot 63

HBR Big Mack 638 P
HBR Big Mack 408 P ET
HBR Lady GI 207 P ET

HBR Big Mack 255 P

HBR Magnum 93 P
HBR Lady Magnum 219 P
HBR Lady Mack 7/9 P

DOB: 12/27/13

Polled

BIRTH		WWR		SCROT CIR	
80		97		41	
2015 EPDs	BW	WW	YW	MILK	TM
	2.9	26	43	19	32



Lot 63



Lot 65



Lot 72

Lot 64

HBR Program 297 P
HBR Program 797 ET
HBR Lady Magnum 319 P

HBR Program 256 P

HBR Profit 729 P
HBR Lady Profit 190 P
HBR Lady Equalizer 658 P

DOB: 12/28/13

Polled

BIRTH		WWR			SCROT CIR	
78		100			38	
2015 EPDs	BW	WW	YW	MILK	TM	
	4.0	38	65	20	40	

Lot 65

HBR Equalizer 402 P
HBR Equalizer 915 P
HBR Lady Profit 760 P

HBR Equalizer 8370

HBR Profit 543 P
VWC Profit W57
VWC Lady Program S28

DOB: 12/28/13

Dehorned

BIRTH		WWR			SCROT CIR	
80		118			45	
2015 EPDs	BW	WW	YW	MILK	TM	
	2.6	38	65	21	40	

Lot 66

HBR Big Mack 408 P ET
HBR Big Mack 906 P
HBR Lady Magnum 749 P

HBR Big Mack 8371 P

HBR Fasttrack 144 P
VWC Lady Fasttrack S37
VWC Duchess 141

DOB: 12/28/13

Polled

BIRTH		WWR			SCROT CIR	
80		80			40	
2015 EPDs	BW	WW	YW	MILK	TM	
	2.7	16	29	16	24	

Lot 67

SC Shadowbrook 449 ET
HBR Profit 639 P
HBR Lady Program 448 P

HBR Profit 260 P

HBR Big Mack 408 P ET
HBR Lady Big Mack 104 P
HBR Lady Icon 620 P

DOB: 1/2/14

Polled

BIRTH		WWR		SCROT CIR	
80		97		38	
2015 EPDs	BW	WW	YW	MILK	TM
	3.7	40	68	18	38

Lot 68

HBR Magnum 118 P
HBR Magnum 625 P/S
HBR Lady Equalizer 409 P

HBR Magnum 259 P

HBR Magnum 961 P
HBR Lady Magnum 455 P
HBR Lady Program 8/15 P

DOB: 1/3/14

Polled

BIRTH		WWR		SCROT CIR	
80		100		41	
2015 EPDs	BW	WW	YW	MILK	TM
	1.9	24	43	24	36

Lot 69

SC Shadowbrook 449 ET
HBR Profit 782 P
HBR Lady Magnum 396 P

HBR Profit 8401 P

HBR Magnum 379 P TW
VWC Lady Magnum 1032
VWC Grace 048

DOB: 1/8/14

Polled

BIRTH		WWR		SCROT CIR	
75		97		36	
2015 EPDs	BW	WW	YW	MILK	TM
	1.1	34	58	13	30

Lot 70

HEP Auto Pilot 101H ET
HBR Auto Pilot 977 P
HBR Lady Magnum 455 P

HBR Auto Pilot 8402 P

HBR Magnum 427 P ET
VWC Lady Magnum 9155
HBR Lady Magnum 2/12 P

DOB: 1/8/14

Polled

BIRTH		WWR		SCROT CIR	
80		99		40	
2015 EPDs	BW	WW	YW	MILK	TM
	3.1	32	59	22	38

Lot 71

HBR Cannon 2250 ET
HBR Cannon 602 P
HBR Lady Magnum 850 P

HBR Cannon 264 P

HEP Auto Pilot 101H ET
HBR Lady Auto Pilot 066 P
HBR Lady Magnum 947 P

DOB: 1/10/14

Polled

BIRTH		WWR		SCROT CIR	
74		93		37	
2015 EPDs	BW	WW	YW	MILK	TM
	2.1	30	56	24	39

Lot 72

HBR Program 7041
HBR Program 11 P
HBR Lady Profit 806 P

HBR Program 8404 P

HBR Magnum 379 P TW
VWC Lady Magnum 1058
VWC Duchess S60

DOB: 1/12/14

Polled

BIRTH		WWR		SCROT CIR	
65		98		40	
2015 EPDs	BW	WW	YW	MILK	TM
	1.1	36	64	18	36

Lot 73

HBR Program 7041
HBR Program 11 P
HBR Lady Profit 806 P

HBR Program 8405 P

HBR Auto Pilot 282 P
VWC Lady Autopilot 1012
VWC Duchess P41

DOB: 1/12/14

Polled

BIRTH		WWR		SCROT CIR	
80		106		42.5	
2015	BW	WW	YW	MILK	TM
EPDs	3.8	45	79	22	45

Lot 74

SC Shadowbrook 449 ET
HBR Profit 782 P
HBR Lady Magnum 396 P

HBR Profit 8407 P

HBR Mr Complete 449P TW
VWC Complete W30
VWC Lady Thunder S54 Twin

DOB: 1/24/14

Polled

BIRTH		WWR		SCROT CIR	
80		101		43.5	
2015	BW	WW	YW	MILK	TM
EPDs	3.2	41	67	12	33

Lot 75

HEP Auto Pilot 101H ET
HBR Auto Pilot 977 P
HBR Lady Magnum 455 P

HBR Auto Pilot 8408 P

HBR Multi 151 P ET
VWC Duchess S15
VWC 731

DOB: 1/24/14

Polled

BIRTH		WWR		SCROT CIR	
80		111		42	
2015	BW	WW	YW	MILK	TM
EPDs	2.6	32	57	19	35

Lot 76

HBR Big Mack 408 P ET
HBR Big Mack 906 P
HBR Lady Magnum 749 P

HBR Big Mack 8409 P

HBR Thunder 894P
VWC Lady Thunder S54 Twin
VWC Maggie 047

DOB: 1/31/14

Polled

BIRTH		WWR			SCROT CIR	
75		82			42	
2015	BW	WW	YW	MILK	TM	
EPDs	2.8	17	31	13	22	

Lot 77

SC Shadowbrook 449 Et
HBR Profit 782 P
HBR Lady Magnum 396 P

HBR Profit 8410 P

HBR Profit 543 P
VWC Profit W21
VWC Lady Thunder S36

DOB: 2/2/14

Polled

BIRTH		WWR			SCROT CIR	
70		97			37.5	
2015	BW	WW	YW	MILK	TM	
EPDs	0.6	34	59	10	27	

Lot 78

HBR Program 7041
HBR Program 11 P
HBR Lady Profit 806 P

HBR Program 8411 P

HBR Auto Pilot 282 P
VWC Lady Pilot W22
VWC Magge R05

DOB: 2/2/14

Polled

BIRTH		WWR			SCROT CIR	
75		106			39	
2015	BW	WW	YW	MILK	TM	
EPDs	3.0	47	82	21	44	

Lot 79

HBR Program 7041
HBR Program 11 P
HBR Lady Profit 806 P

HBR Program 8412 P

HBR Magnum 427 P ET
VWC Maggie 1005
HBR Lady Mack 2/34 P

DOB: 2/3/14

Polled

BIRTH		WWR		SCROT CIR	
70		100		42.5	
2015	BW	WW	YW	MILK	TM
EPDs	1.3	40	71	14	34

Lot 80

HBR Equalizer 402 P
HBR Equalizer 915 P
HBR Lady Profit 760 P

HBR Equalizer 8413 P

HBR Thunder 894P
VWC Lady Thunder P801
VWC Maggie 044

DOB: 2/3/14

Polled

BIRTH		WWR		SCROT CIR	
70		98		40	
2015	BW	WW	YW	MILK	TM
EPDs	1.7	29	50	15	30

Bred Brangus Heifers and Cows

We think brood cows should be adapted to the environment where they will be raised. We think these Brangus females do just that.

This fall we are offering approximately 25 spring calving Brangus heifers and 25 fall calving Brangus cows. All cattle have been pregnancy tested and had their pelvis measured. The bred heifers will be grouped according to due date, weight and amount of ear. They will be sold in groups of 3 and 4. The cows will be sold in groups of 3 and will be grouped according to due date. The Brangus will not run through the ring; we will have them videotaped by lots. They will be penned on sale day as they will be sold. If you have not been to one of our sales before, just ask me or one of the guys in the red shirts and we will be glad to help you.

The heifers are bred to Angus bulls and the Brangus cows are bred to Charolais bulls. The cows are 3 and 4 years old.

All heifers have had their pelvis measured and their reproductive track inspected for any problems. We have selected these heifers from a large group. Any animal that had a small pelvis or an unsound reproductive system was eliminated.

Many factors contribute to dystocia (calving problems) in heifers. While we stress that we have not eliminated all of the factors related to calving problems, we feel that our offering of heifers will have far fewer problems than most.

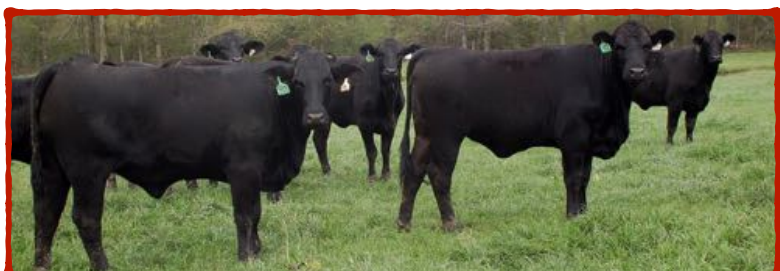
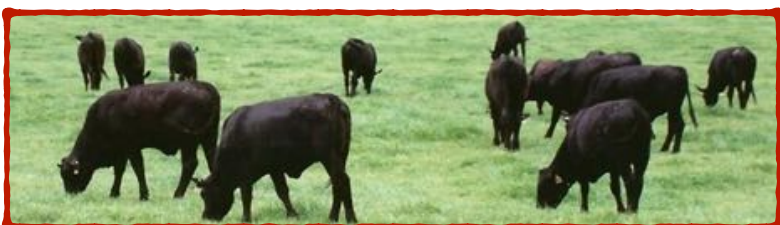
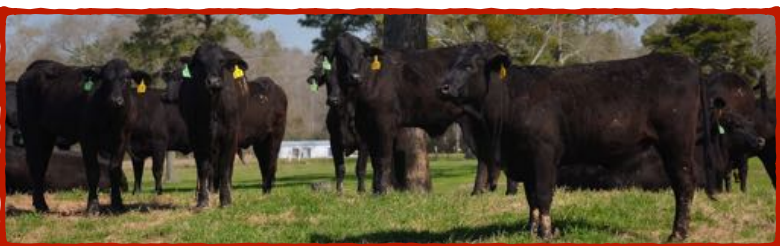
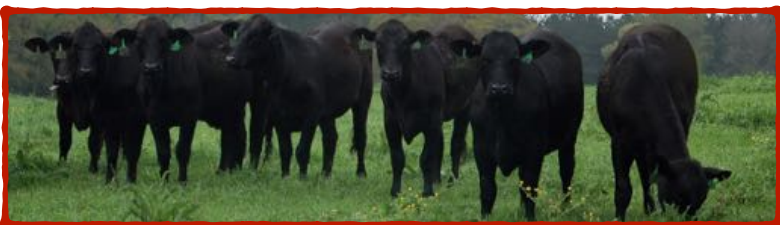
They have been vaccinated for IBR, BVD, P13, Blackleg, and Lepto, treated with Spotton and wormed with Dectomax.

Selling

25 Fall Calving Brangus Cows and 25 Spring Calving Brangus Heifers



- Pelvic Measurements
- Reproductive Tract Examined
- Offering Selected Out of a Large Group
- Heifers Adapted to Southeastern Environment



StockPro Animal Health

Antibiotics Vaccines De-wormers
Implants

AI & Breeding Supplies And SO MUCH
more!



StockPro Animal Health is a **VOLUME** distributor of
Animal Health Supplies, located at:

**115 Main Street (next to Main Street Café)
Collins, MS 39428**

Ph: 601.517.8178

Store Hours: Mon – Fri, 8AM – 4PM

Licensed Vet on Staff: Dr. Anna Ketchum, DVM

Competitive Pricing & 24 hr In-State Delivery



Cattle Buying Yard

Buying All Classes of Yearlings and Calves

NO COMMISSION & NO SHRINK

Cattle Weighed on State Certified Scales

Also offering Forward Contracting on Yearling Cattle

**EVERY MONDAY 7AM – 12PM
OR BY APPOINTMENT**

Hauling Available - Reasonable
Rates!

Call for Directions

Hwy 28, 7 miles West of Magee, MS

LEVI ROGERS: #601-315-1009



A History of Being Outstanding in Our Field.

Need to talk Ag Lending? See us today.



Peoples Bank
Mississippi's Main Street Bank

COLLINS • MAGEE • MENDENHALL • PUCKETT
peoplesbank-ms.com

Follow us on:



TERMS & CONDITIONS

BIDDING: Each animal on which there are two or more bids will be sold to the highest bidder.

TERMS: The terms of the sale are cash. Checks are accepted and should be made payable to **Rogers Bar HR**.

DISPUTES: The auctioneer will settle any disputes as to bids by declaring all bids off and reselling the animal in question.

HANDLING: Each animal will be at the purchaser's risk as soon as sold and settlement must be made at the completion of the sale. We will be happy to care for your cattle for a reasonable time and cost and arrange for delivery at competitive prices if you prefer. Make such arrangements with Dorotheann Rogers.

HEALTH: All animals will have health certificates. They have each been semen tested and found fertile. The bulls have been vaccinated for IBR, BVD, PI3, 8-way Blackleg and wormed with Dectomax. Mississippi is now Tuberculosis free and Bangs free.

BREEDERS GUARANTEE: Rogers Bar HR guarantees all bull's semen and all Brangus heifers as breeding stock for one year from date of purchase. If an animal fails to perform, credit toward another animal will be given for future sales. All animals that do not perform and are returned must be in good condition and weight according to their age. Contact Doug Rogers if you have a problem.

ANNOUNCEMENTS: Announcements from the auction box will take precedence over the printed matter in the catalog.

LIABILITIES: All persons attending this sale do so at their own risk and the owner and agents assume no liability, legal or otherwise, for any accidents or loss of property which may occur.

Notes