

Brands

OF RECOGNITION SALE

BRANGUS, CHAROLAIS, RED ANGUS, SIMANGUS



11.06.21 | 12:00 NOON

UNITED PRODUCERS | COLUMBIA TENNESSEE

SALE INFORMATION

SALE LOCATION: United Producers Barn
1231 Industrial Park Rd. Columbia, TN

SALE SCHEDULE & INSPECTION OF CATTLE:

FRIDAY, NOVEMBER 5: Cattle Available for Viewing at Sale Facility - Afternoon

SATURDAY, NOVEMBER 6

7:00 | Cattle Available for Viewing

12:00 Noon | "Brands of Recognition" Bull Sale Featuring

Brangus, Charolais, Red Angus, Simangus breeds

SALE DAY PHONES:

Bart Pope	931-722-0244
Doyle Miller.....	615-351-2783
Luke Mobley, Sale Manager/Auctioneer.....	205-270-0999
Danny Osborn.....	256-679-6307
William Mcintosh, Special Assignment.....	502-867-3131
Phil Richardson, Special Assignment.....	856-250-1375
Michelle Mobley, Office & Buyer Registration.....	205-454-6681

CATTLE CONTRIBUTORS

Miller Brangus - Lot 1-54 | Bert & Doyle Miller

Doyle Miller | 615-351-2783 & Bart Pope, Ranch Manager | 931-722-0244

Mike Davis Charolais - Lot 55-58 | Mike Davis | 423-489-9302

Mueller Charolais - Lot 59-63 | Tim Mueller | 573-803-8052

Osborn Red Angus - Lot 64-67 | Danny Osborn | 256-679-6307

Dixon Red Angus - Lot 68-69 | Jed Dixon | 256-614-4212

C&J Red Angus Ranch - Lot 70-72 | Keith Merritt | 847-651-9734

This sale will be broadcast live on the internet.

DVAuction
Broadcasting Real-Time Auctions

Real time bidding & proxy bidding available.

Online Bidding: Online bidding will be made available through DVAuction. To watch or bid online, please visit www.dvauction.com to register and apply for bidding prior to the sale. If you have any questions, please call DV Auction at 402-316-5460 or 402-474-5557 or via email at support@dvauction.com. Keep Logo make smaller if needed

Absentee Bidding: Bid with confidence from the comfort of your home, simply call any member of Sale Staff or Consignor. All phone bidders are required to register for a bidder number before the sale. Registration begins Saturday morning.

Terms & Conditions: Cash or check only. Full settlement must be made to the sales clerk the day of the sale. The auctioneer will settle any disputes as to bids. All registered cattle sell under the suggested terms & conditions of each appropriate breed association and or as stated below.

Guarantee: All animals are guaranteed to be breeders with the exception of: a) calves under 12 months of age; b) injury or disease occurring after the sale; c) gross negligence or willful misconduct on the part of the purchaser; d) death by any reason. Bulls sell under the terms and conditions of each breed association. The seller guarantees that all bulls are breeders for a period of 90 days following the initial turn out with buyers herd. A bull that settles a cow by natural service and passes a fertility test performed by a competent veterinarian or reproductive technician mutually agreed upon by the buyer and seller will be considered a breeder. Safe in calf females have been examined by competent personnel and are so guaranteed. Exposed females have been exposed but are not guaranteed to be safe in calf. Open females have not been served and are so guaranteed. This is not a life insurance policy. We will not replace a dead animal if it is killed, dies or is injured for any other reason. We would suggest that normal care be provided to these animals.

Health: Complete health papers will be provided on all cattle suitable for immediate shipment. All cattle will have proper vaccinations. All bulls will have a current Breeding Soundness Exam (BSE) & semen test. Sale Day Veterinarian

Updates & Announcements: A supplemental update sheet will be available sale day with complete and up to date information. Bulls current weight and scrotal circumference will be provided. Announcements from the block take precedence over any and all printed material.

Liability: Anyone previewing the cattle and or attending the sale does so at their own risk. Neither Mobley Livestock Marketing and associates, nor sale staff, nor United Producers and staff, nor sale consignors will be held liable for injury to attendees, or to purchased animals. The responsibility for sold animals passes to the buyer when the auctioneer says "sold". Mobley's Auction Service and United Producers staff will make every reasonable effort to ensure the safe handling of purchased cattle until picked up by the buyer, however buyers are encouraged to purchase their own insurance before transporting newly bought cattle.

Livestock Mortality Insurance: Ask Mobley Livestock Marketing associates for information.

Trucking: Truckers believed to be reliable will be available to assist with shipping. Please ask Mobley Livestock Marketing staff for more information.

Sale Accommodations: Hampton Inn: 931-540-1222; Holiday Inn Express 931-380-2025, 1561 Halifax Dr., Columbia, TN. Several other hotel chains are located in Columbia, TN.

Food & Refreshments: Sale barn cafe will be open sale day.

Auctioneer & Sale Management:
Col. Luke Mobley | 205-270-0999
www.LukeMobley.com



LOT 1: MB TORO 129G22



1

MB TORO 129G22

R10423102 | 129G22 | P | GEN: 2 | 09/26/19

CLVR-TJM HUASTEKO 535A
CLVR EL TORO 23C2
CLVR MISS IRIS 23Y1

CB FINAL CUT 924X
SF MS NEWSMAN 535R3
SVF GARRETT 274 U229
SVF MS 23S101
S A F FOCUS OF ER
MYTTY COUNTLESS 906
+JDH MADISON DE MANSO 737/4
GLC MS SASQUATCH 1129/Z

MYTTY IN FOCUS 109
MB MS INFOCUS 129X4
MC MS MADISON 129K4

	CEP	BW	WW	YW	MILK	TM	CEM	SC	REA	IMF	FAT	HPREG	STAY	CW
EPD	4.7	1.8	39	84	15	35	3.3	0.68	0.69	0.22	-0.017	1.82	2.17	16.06
%RK	60	80	10	5	10	2	75	30	10	15	>95	40	30	>95
REA	IMF	Fat	Sc											
365	365	365	40											
15.907	4.31	.26	40											

Toro son out of an own daughter of the outstanding donor cow 129K4. 129k4 has left a lasting legacy at Miller Brangus and the Brangus breed. What better way to start off than offering an elite member of this family. 129G22 is long bodied, deep sided, big hipped, with lots of growth and power. EPD's rank him in Top 10% WW, 5% YW, 10% Milk, 2% TM, 10% REA, and 15% IMF. Plenty of growth and carcass for even the most demanding breeder.

2

MB TORO 129H18

R10478294 | 129H18 | P | GEN: 3 | 04/01/20

CLVR-TJM HUASTEKO 535A
CLVR EL TORO 23C2
CLVR MISS IRIS 23Y1

CB FINAL CUT 924X
SF MS NEWSMAN 535R3
SVF GARRETT 274 U229
SVF MS 23S101

TJM THREE D 302A
MB MS THREE D 129D70
MB MS INFOCUS 129X14

CB FINAL CUT 924X
OAKS MS PATTON 302X3
MYTTY IN FOCUS 109
MC MS MADISON 129K4

	CEP	BW	WW	YW	MILK	TM	CEM	SC	REA	IMF	FAT	HPREG	STAY	CW
EPD	4.7	1.9	42	82	10	31	4.0	0.56	0.58	0.13	-0.029	1.80	1.63	14.82
%RK	60	80	10	10	35	10	20	40	15	30	90	40	40	>95
REA	IMF	Fat	Sc											
365	365	365	33											
12.627	4.59	.212	33											

Another Toro son who traces lineage back to 129K4. His dam is a powerful Three D daughter and granddaughter of 129K4. 129H18 is a powerful bull with Top 10% WW, 10% YW, 15% REA, and 30% IMF. He is visually appealing with a big hip, thick body and wide base.



LOT 2: MB TORO 129H18

3

MB TORO 240H

R10478314 | 240H | P | GEN: 6 | 03/04/20

CLVR-TJM HUASTEKO 535A
CLVR EL TORO 23C2
CLVR MISS IRIS 23Y1

CB FINAL CUT 924X
SF MS NEWSMAN 535R3
SVF GARRETT 274 U229
SVF MS 23S101

CSONKA OF BRINKS 30R4
OAKS MS CSONKA 240U9
MS BRINKS NIMITZ 240P28

LEAD GUN OF BRINKS 222K14
MISS BRINKS UPPERCUT 30L18
NIMITZ OF BRINKS 75L12
MISS BRINKS PICASSO 240H8

	CEP	BW	WW	YW	MILK	TM	CEM	SC	REA	IMF	FAT	HPREG	STAY	CW
EPD	4.2	2.4	38	75	15	34	3.8	0.53	0.51	0.10	-0.044	1.91	-0.07	1.94
%RK	75	90	15	10	10	3	30	40	25	35	40	35	90	70
REA	IMF	Fat	Sc											
365	365	365	34.5											
10.97	3.75	.12	34.5											

Yet another Toro son who is a sale highlight. Toro is one of our herd sires who is doing an excellent job for us. His offspring are phenotypically correct and visually pleasing with lots of growth and power. 240H posts Top 15% WW, 10% YW, 25% REA and 35% IMF EPD's. His dam is a Csonka daughter and a long time donor at Miller Brangus.

5

MB TORO 661H

R10478322 | 661H | P | GEN: 5 | 03/29/20

CLVR-TJM HUASTEKO 535A
CLVR EL TORO 23C2
CLVR MISS IRIS 23Y1

CB FINAL CUT 924X
SF MS NEWSMAN 535R3
SVF GARRETT 274 U229
SVF MS 23S101

ATLANTA OF SALACOA 488Z
MB ATLANTA 661D
MB MS REVELATION 661A6

LAMBERT OF BRINKS 317R3
MS SVF CADENCE 488X11
MC REVELATION 129T
MB MS REAL DEAL 661U5

	CEP	BW	WW	YW	MILK	TM	CEM	SC	REA	IMF	FAT	HPREG	STAY	CW
EPD	5.3	1.0	36	70	14	32	4.0	0.48	0.57	0.13	-0.029	2.02	0.57	4.23
%RK	40	60	15	10	5	20	45	20	20	30	90	30	70	85
REA	IMF	Fat	Sc											
365	365	365	38.5											
11.52	3.53	.13	38.5											



LOT 3 MB TORO 240H

4

MB TORO 129H19

R10478295 | 129H19 | P | GEN: 3 | 04/03/20

CLVR-TJM HUASTEKO 535A
CLVR EL TORO 23C2
CLVR MISS IRIS 23Y1

CB FINAL CUT 924X
SF MS NEWSMAN 535R3
SVF GARRETT 274 U229
SVF MS 23S101

MB YOSEMITE 17Y8
MB MS YOSEMITE 129C54
MB MS INFOCUS 129X4

MC JETHRO 00S3
MB MS NEW DIRECTION 17R5
MYTTY IN FOCUS 109
MC MS MADISON 129K4

	CEP	BW	WW	YW	MILK	TM	CEM	SC	REA	IMF	FAT	HPREG	STAY	CW
EPD	5.1	1.8	34	68	12	29	3.5	0.60	0.55	0.18	-0.022	2.17	1.67	12.76
%RK	45	80	20	20	20	15	55	35	20	20	95	25	40	>95
REA	IMF	Fat	Sc											
365	365	365	32											
9.49	3.67	.11	32											

Another powerful Toro son with 129 lineage. 129H19 is a big-footed, heavy-ribbed bull with plenty of growth and power. He posts 6 EPD's in top 20% or greater.



SIRE OF LOTS 1-11:
CLVR EL TORO 23C2

7

MB TORO 000H2

R10478290 | 000H2 | P | GEN: 5 | 02/28/20

CLVR-TJM HUASTECO 535A
CLVR EL TORO 23C2
CLVR MISS IRIS 23Y1

CB FINAL CUT 924X
SF MS NEWSMAN 535R3
SVF GARRETT 274 U229
SVF MS 23S101

MB JUSTIFIED 99Z3
MB MS JUSTIFIED 000D34
MB MS NUFF SAID 000Y20

MC REVELATION 129T
MB MS NEWSMAN 99U
MC NUFF SAID 889T50
MB MS LEAD GUN 000U4

	CEU	BW	WW	YW	MILK	TM	CEM	SC	REA	IMF	FAT	HPREG	STAY	CW
EPD	4.9	1.6	33	69	13	30	4.0	0.19	0.54	0.08	-0.043	2.39	0.96	8.65
%RK	50	75	25	15	15	10	20	75	20	40	45	20	55	95
REA	IMF	Fat	Sc											
365	365	365												
12.17	3.61	.10	33.5											

Toro son that is heavily-muscled, long-bodied, and thick-topped. Posts another set of impressive EPD's with 6 traits in Top 20% or greater than breed average.



LOT 7: MB TORO 000H2

8

MB TORO 000H7

UB10478291 | 000H7 | P | GEN: 2 | 03/18/20

CLVR-TJM HUASTECO 535A
CLVR EL TORO 23C2
CLVR MISS IRIS 23Y1

CB FINAL CUT 924X
SF MS NEWSMAN 535R3
SVF GARRETT 274 U229
SVF MS 23S101

S A V BEST INTEREST 0136
MB MS BEST INTEREST 000E40
MC MS FREIGHTLINER 000M20

S A V BISMARCK 5682
S A V EMBLYNETTE 8172
CONNELLY FREIGHTLINER 7549
MC MS 189/4-000J22

	CEU	BW	WW	YW	MILK	TM	CEM	SC	REA	IMF	FAT	HPREG	STAY	CW
EPD	4.3	2.4	38	79	15	34	3.5	0.53	0.57	0.13	-0.035	1.96	1.90	7.99
%RK	70	90	15	10	10	3	55	40	20	30	75	35	35	95
REA	IMF	Fat	Sc											
365	365	365												
9.70	3.91	.10	33											

9

MB TORO 607H

R10478321 | 607H | P | GEN: 5 | 02/25/20

CLVR-TJM HUASTECO 535A
CLVR EL TORO 23C2
CLVR MISS IRIS 23Y1

CB FINAL CUT 924X
SF MS NEWSMAN 535R3
SVF GARRETT 274 U229
SVF MS 23S101

MB MCCLELLAN 535B5
MB MS MCCLELLAN 607F4
MB MS 165 PATTON 607B

MB YOSEMITE 17Y8
MB MS CAHILL 535Y11
MB BRINKS PATTON 165Y9
MB MS CHISUM 607Y3

	CEU	BW	WW	YW	MILK	TM	CEM	SC	REA	IMF	FAT	HPREG	STAY	CW
EPD	6.0	0.9	33	61	12	28	3.5	0.26	0.53	0.16	-0.033	2.17	0.79	5.71
%RK	25	60	25	25	20	15	55	65	20	25	80	25	60	90
REA	IMF	Fat	Sc											
365	365	365												
10.67	4.24	.15	31.5											

10

MB TORO 99H

R10478327 | 99H | P | GEN: 5 | 04/13/20

CLVR-TJM HUASTECO 535A
CLVR EL TORO 23C2
CLVR MISS IRIS 23Y1

CB FINAL CUT 924X
SF MS NEWSMAN 535R3
SVF GARRETT 274 U229
SVF MS 23S101

MC SOMETHING SPECIAL 129W14
MB MS SOMETHING SPECIAL 99Y
MB MS STRAIGHT LINE 99W13

MC JETHRO 000S3
MC MS LEAD GUN 129T12
MC STRAIGHT LINE 12R3
MB MS LEAD GUN 99S5

	CEU	BW	WW	YW	MILK	TM	CEM	SC	REA	IMF	FAT	HPREG	STAY	CW
EPD	4.8	1.9	36	72	18	35	3.4	0.69	0.57	0.16	-0.033	2.25	0.72	5.10
%RK	55	80	15	15	2	2	70	25	20	25	80	25	65	85
REA	IMF	Fat	Sc											
365	365	365												
9.312	4.07	.115	34.5											

11

MB TORO 16H

R10478301 | 16H | P | GEN: 3 | 02/25/20

CLVR-TJM HUASTECO 535A
CLVR EL TORO 23C2
CLVR MISS IRIS 23Y1

CB FINAL CUT 924X
SF MS NEWSMAN 535R3
SVF GARRETT 274 U229
SVF MS 23S101

ATLANTA OF SALACOA 488Z
MB MS ATLANTA 16F
MB MS YOSEMITE 16D5

LAMBERT OF BRINKS 317R3
MS SVF CADENCE 488X11
MB YOSEMITE 17Y8
MB MS CRUSADER 16Z

	CEU	BW	WW	YW	MILK	TM	CEM	SC	REA	IMF	FAT	HPREG	STAY	CW
EPD	5.1	1.1	36	67	11	28	3.6	0.32	0.64	0.19	-0.029	2.16	0.85	1.45
%RK	45	65	15	20	30	15	50	60	10	20	90	25	60	65
REA	IMF	Fat	Sc											
365	365	365												
8.36	3.81	.12	31											

12

MB BIG TOWN 17G15

R10430560 | 17G15 | P | GEN: 4 | 10/11/19

MC NUFF SAID 889T50
 BWCC BIG TOWN 192B16
 BWCC MS REVELATION 192W8

MC JOHN WAYNE 165N3
 MC MS EXTRAVAGANT 889P4
 MC REVELATION 129T
 MISS 4C LEAD GUN 192P4
 CB FINAL CUT 924X
 OAKS MS PATTON 302X3
 MB GREAT BASIN 329Y5
 MB MS NEW DIRECTION 17R5

TJM THREE D 302A
 MB MS THREE D 17E18
 MB MS GREAT BASIN 17B4

	CEB	BW	WW	YW	MILK	TM	CEM	SC	REA	IMF	FAT	HPREG	STAY	CW
EPD	4.4	1.0	36	68	13	31	3.7	0.70	0.58	0.14	-0.031	3.22	1.32	6.96
%RK	70	60	15	20	15	10	40	25	15	25	85	5	45	90
REA	IMF	Fat	Sc											
365	365	365												
16.005	4.15	.23	39.5											

Big Town son with impressive spring of rib, muscling and eye appeal. Dam is a Three D daughter and granddaughter of the prolific MB donor 17R5. 17R5 left lasting impact at Miller Brangus. She is the dam of proven herd sires Yosemite and Yellowstone as well as multiple donors. A sure sale highlight that is sure to add value to any herd.



LOT 12 MB BIG TOWN 17G15

13

MB BIG TOWN 17H

R10478302 | 17H | P | GEN: 4 | 02/16/20

MC NUFF SAID 889T50
 BWCC BIG TOWN 192B16
 BWCC MS REVELATION 192W8

MC JOHN WAYNE 165N3
 MC MS EXTRAVAGANT 889P4
 MC REVELATION 129T
 MISS 4C LEAD GUN 192P4
 CLVR-TJM HUASTEKO 535A
 CLVR MISS IRIS 23Y1
 MB CAHILL 541T14
 MB MS FREIGHT LINER 17N3

CLVR EL TORO 23C2
 MB MS EL TORO 17F7
 MB MS CAHILL 17B9

	CEB	BW	WW	YW	MILK	TM	CEM	SC	REA	IMF	FAT	HPREG	STAY	CW
EPD	5.2	1.1	34	65	16	32	3.7	0.45	0.58	0.14	-0.032	2.86	1.02	4.87
%RK	40	65	20	20	5	5	40	45	15	25	85	10	55	85
REA	IMF	Fat	Sc											
365	365	365												
12.9	4.22	.10	36											



**SIRE OF LOTS 12-17:
 BWCC BIG TOWN 192B16**

14

MB BIG TOWN 75H

R10478304 | 75H | P | GEN: 4 | 02/26/20

MC NUFF SAID 889T50
 BWCC BIG TOWN 192B16
 BWCC MS REVELATION 192W8

MC JOHN WAYNE 165N3
 MC MS EXTRAVAGANT 889P4
 MC REVELATION 129T
 MISS 4C LEAD GUN 192P4
 LAMBERT OF BRINKS 317R3
 MS SVF CADENCE 488X11
 MB RAYLAN 129Z19
 MB MS TWOKAY 4 75X5

ATLANTA OF SALACOA 488Z
 MB MS ATLANTA 75F2
 MB MS RAYLAN 75D7

	CEB	BW	WW	YW	MILK	TM	CEM	SC	REA	IMF	FAT	HPREG	STAY	CW
EPD	5.7	0.4	36	67	12	30	3.6	0.54	0.61	0.20	-0.030	3.19	1.11	-0.59
%RK	30	45	15	20	20	10	50	40	15	20	85	5	50	45
REA	IMF	Fat	Sc											
365	365	365												
12.98	4.84	.16	37.5											

Another Big Town son with growth and power is an appealing package. 7 EPD's in Top 20% breed average. Dam is an Atlanta daughter and past donor.



LOT 14: MB BIG TOWN 75H

15

MB BIG TOWN 329H5

R10478317 | 329H5 | P | GEN: 4 | 03/08/20

MC NUFF SAID 889T50
 BWCC BIG TOWN 192B16
 BWCC MS REVELATION 192W8

MC JOHN WAYNE 165N3
 MC MS EXTRAVAGANT 889P4
 MC REVELATION 129T
 MISS 4C LEAD GUN 192P4
 MC JETHRO 000S3
 MB MS NEW DIRECTION 17R5
 MC CHISUM 468S8
 MB MS BIG CAT 129M3

MB YOSEMITE 17Y8
 MB MS YOSEMITE 329E17
 MB MS BIG CAT 129M3

	CEB	BW	WW	YW	MILK	TM	CEM	SC	REA	IMF	FAT	HPREG	STAY	CW
EPD	4.4	1.8	35	65	15	32	2.9	0.39	0.54	0.20	-0.029	3.67	1.59	6.93
%RK	70	80	20	20	10	5	95	55	20	20	90	2	40	90
REA	IMF	Fat	Sc											
365	365	365												
11.51	4.54	.12	36											

16

MB BIG TOWN 129H16

R10478308 | 129H16 | P | GEN: 3 | 04/01/20

MC NUFF SAID 889T50
 BWCC BIG TOWN 192B16
 BWCC MS REVELATION 192W8

MC JOHN WAYNE 165N3
 MC MS EXTRAVAGANT 889P4
 MC REVELATION 129T
 MISS 4C LEAD GUN 192P4
 MC CHISUM 468S8
 MB MS NEW DIRECTION 17R5
 MYTTY IN FOCUS 109
 MC MS MADISON 129K4

MB CRUSADER 17W9
 MB MS CRUSADER 129D4
 MB MS INFOCUS 129X12

	CEB	BW	WW	YW	MILK	TM	CEM	SC	REA	IMF	FAT	HPREG	STAY	CW
EPD	4.9	1.6	39	77	16	35	3.2	0.79	0.74	0.30	-0.019	3.23	1.95	9.43
%RK	50	75	10	10	5	2	80	20	5	10	>95	4	35	95
REA	IMF	Fat	Sc											
365	365	365												
13.48	4.42	.19	36											

MILLER BRANGUS BULLS - LOTS 1-54

17

MB BIG TOWN 329H

R10478315 | 329H | P | GEN: 4 | 01/07/20

MC NUFF SAID 889T50
 BWCC BIG TOWN 192B16
 BWCC MS REVELATION 192W8

MC JOHN WAYNE 165N3
 MC MS EXTRAVAGANT 889P4
 MC REVELATION 129T
 MISS 4C LEAD GUN 192P4

CLVR EL TORO 23C2
 MB MS EL TORO 329F9
 MB GUN HAND 329A23

CLVR-TJM HUASTEKO 535A
 CLVR MISS IRIS 23Y1
 MB LEAD GUN 000U34
 MB MS REAL DEAL 329U10

	CED	BW	WW	YW	MILK	TM	CEM	SC	REA	IMF	FAT	HPREG	STAY	CW
EPD	4.6	1.4	34	65	16	33	3.7	0.34	0.56	0.16	-0.037	3.09	1.24	5.96
%RK	65	70	20	20	5	4	40	60	20	25	70	10	45	90
REA 365	IMF 365	Fat 365	Sc											
11.57	4.6	.17	37											



**SIRE OF LOTS 18-19:
 ATLANTA OF SALACOA 488Z**

18

MB ATLANTA 129H8

R10478298 | 129H8 | P | GEN: 3 | 02/28/20

LAMBERT OF BRINKS 317R3
 ATLANTA OF SALACOA 488Z
 MS SVF CADENCE 488X11

LEAD GUN OF BRINKS 222K14
 MS BRINKS GOOD FORTUNE 317M
 CADENCE OF BRINKS 535D3
 MS BRINKS LEAD TIME 488N

TJM THREE D 302A
 MB MS THREE D 129D36
 MB MS INFOCUS 129X14

CB FINAL CUT 924X
 OAKS MS PATTON 302X3
 MYTTY IN FOCUS 109
 MC MS MADISON 129K4

	CED	BW	WW	YW	MILK	TM	CEM	SC	REA	IMF	FAT	HPREG	STAY	CW
EPD	5.7	0.2	40	72	5	24	4.4	0.62	0.58	0.22	-0.037	2.24	1.08	0.02
%RK	30	40	10	15	90	35	10	35	15	15	70	25	50	55
REA 365	IMF 365	Fat 365	Sc											
11.47	4.21	.16	37											

An Atlanta son with 129 cow family on bottom side of pedigree. Big spread bull with Top 30% CED to Top 10% WW and 15% YW. 129H8's sire Atlanta has been one of most used AI sires in breed by both registered and commercial cattlemen across the country.



LOT 18: MB ATLANTA 129H8

19

MB ATLANTA 15G2

R10420566 | 15G2 | P | GEN: 4 | 10/20/19

MC BOULDER 889Z14
 NEVER SURRENDER OF SALACOA 803D9
 MS BRINKS LOMBARDI 803S25

MC SOMETHING SPECIAL 129W14
 MC MS EXTRAVAGANT 889X4
 LOMBARDI OF BRINKS 468N10
 MISS BRINKS KO 803J

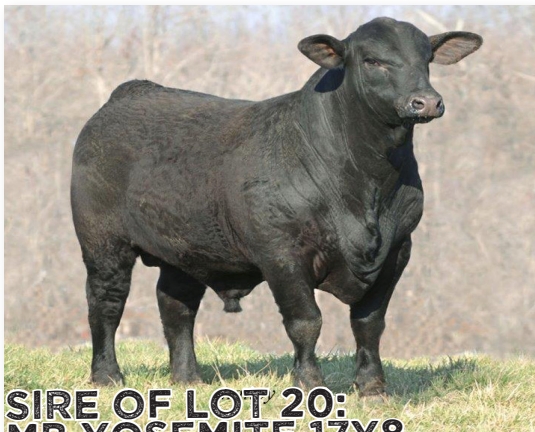
ATLANTA OF SALACOA 488Z
 MS SALACOA ATLANTA 23C20
 MS SVF WARRIOR 23Y37

LAMBERT OF BRINKS 317R3
 MS SVF CADENCE 488X11
 TCB CATAWBA WARRIOR R532
 SVF MS 23M28

	CED	BW	WW	YW	MILK	TM	CEM	SC	REA	IMF	FAT	HPREG	STAY	CW
EPD	2.3	2.4	46	93	8	31	2.5	0.79	0.90	0.17	-0.026	2.39	0.72	-5.51
%RK	95	85	2	1	65	10	95	15	1	15	95	15	55	25
REA 365	IMF 365	Fat 365	Sc											
13.4	3.49	.17	37.5											

Another Atlanta son with great blend of maternal and growth characteristics.

LOT 19: MB ATLANTA 15G2



**SIRE OF LOT 20:
 MB YOSEMITE 17Y8**

20

MB YOSEMITE 129E17

R10362791 | 129E17 | P | GEN: 2 | 04/27/17

MC JETHRO 000S3
 MB YOSEMITE 17Y8
 MB MS NEW DIRECTION 17R5

MC JOHN WAYNE 165N3
 MC MS STOUT 00M5
 MC NEW DIRECTION 000 M24
 MB MS BRIGHT SIDE 17N6

MYTTY IN FOCUS
 MB MS INFOCUS 129X16
 MC MS MADISON 129K4

S A F FOCUS OF ER
 MYTTY COUNTESS 906
 +JDH MADISON DE MANSO 737I4
 GLC MS SASQUATCH 1129I2

	CED	BW	WW	YW	MILK	TM	CEM	SC	REA	IMF	FAT	HPREG	STAY	CW
EPD	7.4	0.7	30	61	14	29	3.0	2.37	0.90	0.33	-0.014	2.77	2.49	18.60
%RK	10	50	30	25	10	15	90	1	1	10	>95	10	10	>95
REA 365	IMF 365	Fat 365	Sc											
14.91	4.94	.27	47											

22

MB 129E17 449H5

R10478324 | 449H5 | P | GEN: 3 | 04/18/20

MB YOSEMITE 17Y8
MB YOSEMITE 129E17
MB MS INFOCUS 129X16

MC JETHRO 00S3
MB MS NEW DIRECTION 17R5
MYTTY IN FOCUS
MC MS MADISON 129K4

MB YELLOWSTONE 17Y2
MB MS YELLOWSTONE 449C4
MB MS ABRAMS 449Y

MC JETHRO 00S3
MB MS NEW DIRECTION 17R5
MC ABRAMS 468T22
MB MS JOHNNY ENGLISH 449U3

	CED	BW	WW	YW	MILK	TM	CEM	SC	REA	IMF	FAT	HPREG	STAY	CW
EPD	6.0	1.9	33	68	14	31	3.1	1.32	0.78	0.33	-0.013	3.14	2.13	11.57
%RK	25	80	25	20	10	10	85	3	3	10	>95	5	30	>95
REA	IMF	Fat	Sc											
365	365	365	365											
10.77	4.067	.15	36											

23

MB 129E17 329H13

R10478316 | 329H13 | P | GEN: 3 | 05/04/20

MB YOSEMITE 17Y8
MB YOSEMITE 129E17
MB MS INFOCUS 129X16

MC JETHRO 00S3
MB MS NEW DIRECTION 17R5
MYTTY IN FOCUS
MC MS MADISON 129K4

MB MARSHALL 17B15
MB MS MARSHALL 329E15
MB MS DEATH VALLEY 329C15

MB GREAT BASIN 329Y5
MB MS DEAD ON 17Y9
MB DEATH VALLEY 568Y
MB MS ROCK STAR 329X24

	CED	BW	WW	YW	MILK	TM	CEM	SC	REA	IMF	FAT	HPREG	STAY	CW
EPD	5.5	1.9	28	51	14	27	3.2	1.46	0.55	0.17	-0.023	3.03	2.08	14.90
%RK	35	80	40	40	10	20	80	2	20	25	95	10	30	>95
REA	IMF	Fat	Sc											
365	365	365	365											
10.91	4.38	.14	36											



LOT 25: MB RIDGEWAY 20G2

24

MB 129E17 99H2

R10478306 | 99H2 | P | GEN: 3 | 05/19/20

MB YOSEMITE 17Y8
MB YOSEMITE 129E17
MB MS INFOCUS 129X16

MC JETHRO 00S3
MB MS NEW DIRECTION 17R5
MYTTY IN FOCUS
MC MS MADISON 129K4

NEW VISION OF SALACOA 209Y2
MS C STAR NEW VISION 99E44
MS C STAR PATTON 99X31

LAMBERT OF BRINKS 317R3
MS BRINKS BRIGHT SIDE 209L11
PATTON OF BRINKS 30T22
MS CSR RIGHT DIRECTION 99U19

	CED	BW	WW	YW	MILK	TM	CEM	SC	REA	IMF	FAT	HPREG	STAY	CW
EPD	7.1	0.1	25	46	9	21	3.5	1.54	0.68	0.18	-0.030	1.86	1.03	2.00
%RK	10	40	50	50	45	50	55	1	10	20	85	40	55	70
REA	IMF	Fat	Sc											
365	365	365	365											
11.28	3.066	.08	31											

25

MB RIDGEWAY 20G2

R10430576 | 20G2 | P | GEN: 5 | 11/14/19

MB DEATH VALLEY 568Y
MB RIDGEWAY 661B3
MB MS PATTON 661Y5

MC ROCK STAR 924U6
MB MS ANCHOR 568W
MC PATTON 129R70
MB MS JOHN WAYNE 661S5

MB LEAD GUN 74U18
MB MS RUGER 20B
MB MS CAHILL 20X3

LEAD GUN OF BRINKS 222K14
MC MS TEXAS MANDATE 74F2
MB CAHILL 541T14
MB MS NEW DIRECTION 20T3

	CED	BW	WW	YW	MILK	TM	CEM	SC	REA	IMF	FAT	HPREG	STAY	CW
EPD	4.1	2.1	38	66	8	27	3.4	0.37	0.48	0.00	-0.026	2.59	0.99	3.82
%RK	75	85	15	20	55	20	70	55	30	60	90	15	55	80
REA	IMF	Fat	Sc											
365	365	365	365											
14.23	4.65	.25	39											

Ridgeway son that is cleaner made with heavy muscling and lots of spring of rib. Ridgeway was a long term Miller Brangus herd sire who was very consistent in producing powerful bulls and fertile females. 20G2 should do same for future owner.

26

MB RIDGEWAY 129G25

R10430571 | 129G25 | P | GEN: 3 | 11/12/19

MB DEATH VALLEY 568Y
MB RIDGEWAY 661B3
MB MS PATTON 661Y5

MC ROCK STAR 924U6
MB MS ANCHOR 568W
MC PATTON 129R70
MB MS JOHN WAYNE 661S5

MB YELLOWSTONE 17Y2
MB MS YELLOWSTONE 129Y8
MB MS INFOCUS 129X2

MC JETHRO 00S3
MB MS NEW DIRECTION 17R5
MYTTY IN FOCUS
MC MS MADISON 129K4

	CED	BW	WW	YW	MILK	TM	CEM	SC	REA	IMF	FAT	HPREG	STAY	CW
EPD	4.3	2.9	42	77	12	33	3.5	0.61	0.62	0.17	-0.014	2.65	1.95	15.81
%RK	70	95	10	10	10	20	4	55	35	15	25	>95	15	35
REA	IMF	Fat	Sc											
365	365	365	365											
14.26	4.62	.21	38.5											

27

MB RIDGEWAY 329H9

R10478319 | 329H9 | P | GEN: 3 | 04/09/20

MB DEATH VALLEY 568Y
MB RIDGEWAY 661B3
MB MS PATTON 661Y5

MC ROCK STAR 924U6
MB MS ANCHOR 568W
MC PATTON 129R70
MB MS JOHN WAYNE 661S5

MC ROCK STAR 924U6
MB MS ROCK STAR 329X24
MB MS BIG CAT 129M3

MC JETHRO 00S3
MISS NMSU 924
CCC BIG CAT 209H2
MC MS MADISON 129K4

	CED	BW	WW	YW	MILK	TM	CEM	SC	REA	IMF	FAT	HPREG	STAY	CW
EPD	3.4	2.9	34	55	12	28	3.2	0.27	0.38	0.05	-0.021	2.99	1.61	12.03
%RK	85	95	20	35	20	15	80	65	45	45	95	10	40	>95
REA	IMF	Fat	Sc											
365	365	365	365											
11.43	3.81	.15	35											

Ridgeway son with great eye appeal and maternal traits. DAM is a Rock Star Daughter who goes back to MB MS Big Cat 129M3. 129M3 was long time donor for Miller Brangus and multi-trait breed leading cow.



LOT 27: MB RIDGEWAY 329H9



29 MB QUARRY 000G14

R10430558 | 000G14 | P | GEN: 3 | 10/14/19
 MC GRANITE 834B
 OAKS QUARRY 803D5
 LM MS HOMBRE 803B20
 MC BOULDER 889Z14
 MC MS 778 TRAVELER 834Z
 CB HOMBRE 541T3
 MS BRINKS LAMBERT 803T6
 MC JETHRO 00S3
 MISS 4C NEW DIRECTION 535R
 CONNEALY FOREFRONT
 MC MS 189/4-000J2



LOT 29: MB QUARRY 000G14

	CEB	BW	WW	YW	MILK	TM	CEM	SC	REA	IMF	FAT	HPREG	STAY	CW
EPD	8.5	-0.2	32	62	9	25	3.2	0.34	0.64	0.17	-0.026	1.91	2.57	4.02
%RK	3	30	25	25	45	30	80	60	10	25	90	35	10	85
REA	IMF	Fat	Sc											
365	365	365	37											
11.38	4.44	.15	37											

Quarry son with tremendous shape and dimensions, calving ease bull with Top 25% WW and YW EPD's. Great bull for producer looking for lower BW but not wanting to sacrifice weaning weight.

30 MB QUARRY 889H2

R10478300 | 889H2 | P | GEN: 2 | 04/26/20
 MC GRANITE 834B
 OAKS QUARRY 803D5
 LM MS HOMBRE 803B20
 MC BOULDER 889Z14
 MC MS 778 TRAVELER 834Z
 CB HOMBRE 541T3
 MS BRINKS LAMBERT 803T6
 MC REVELATION 129T
 MB MS NEWS MAN 99U
 BON VIEW NEW DESIGN 888
 MC MS COPANO 889J20

31 MB QUARRY 889H

R10478299 | 889H | P | GEN: 2 | 04/06/20
 MC GRANITE 834B
 OAKS QUARRY 803D5
 LM MS HOMBRE 803B20
 MC BOULDER 889Z14
 MC MS 778 TRAVELER 834Z
 CB HOMBRE 541T3
 MS BRINKS LAMBERT 803T6
 MC REVELATION 129T
 MB MS NEWS MAN 99U
 BON VIEW NEW DESIGN 888
 MC MS COPANO 889J20

	CEB	BW	WW	YW	MILK	TM	CEM	SC	REA	IMF	FAT	HPREG	STAY	CW
EPD	4.9	0.7	28	57	10	24	3.5	0.23	0.50	0.19	-0.039	1.94	1.51	3.35
%RK	50	50	40	30	35	35	55	70	25	20	65	35	40	80
REA	IMF	Fat	Sc											
365	365	365	37											
11.8	3.6	.16	37											

	CEB	BW	WW	YW	MILK	TM	CEM	SC	REA	IMF	FAT	HPREG	STAY	CW
EPD	4.8	1.0	31	61	9	24	3.6	0.34	0.52	0.18	-0.039	1.94	1.51	3.35
%RK	55	60	30	25	45	35	50	60	25	20	65	35	40	80
REA	IMF	Fat	Sc											
365	365	365	37											
11.8	3.6	.11	36.5											

32 MB 889F8 568H

R10478320 | 568H | P | GEN: 3 | 03/30/20
 ATLANTA OF SALACOA 488Z
 MB ATLANTA 889F8
 MB MS CRUSADER 889C18
 LAMBERT OF BRINKS 317R3
 MS SVF CADENCE 488X11
 MB CRUSADER 17W9
 MB MS BIRTHSTONE 889Y10
 MB DEATH VALLEY 568Y
 MB MS PATTON 661Y5
 MB CREDENTIAL 612X
 CCC MS FUTURE 568J

33 MB ANDERSON 129H23

R10478310 | 129H23 | P | GEN: 2 | 04/20/20
 MB YOSEMITE 17Y8
 MB ANDERSON 99B7
 MB MS SOMETHING SPECIAL 99Y
 MYTTY IN FOCUS
 MB MS INFOCUS 129X6
 MB MS MADISON 129K4
 MCJETHRO 00S3
 MB MS NEW DIRECTION 17R5
 MC SOMETHING SPECIAL 129W14
 MB MS STRAIGHT LINE 99W13
 S A F FOCUS OF ER
 MYTTY COUNTESS 906
 +JDH MADISON DE MANSO 737/4
 GLC MS SASQUATCH 1129/Z

	CEB	BW	WW	YW	MILK	TM	CEM	SC	REA	IMF	FAT	HPREG	STAY	CW
EPD	4.1	1.6	37	64	11	29	3.3	0.54	0.53	0.12	-0.029	2.60	1.74	-1.62
%RK	75	75	15	20	30	15	75	40	20	30	90	15	35	40
REA	IMF	Fat	Sc											
365	365	365	37											
11.18	3.43	.112	36.5											

	CEB	BW	WW	YW	MILK	TM	CEM	SC	REA	IMF	FAT	HPREG	STAY	CW
EPD	5.3	2.8	47	98	18	41	3.8	1.07	0.68	0.29	-0.018	2.65	2.22	15.16
%RK	40	95	3	2	2	1	30	10	10	10	>95	15	30	>95
REA	IMF	Fat	Sc											
365	365	365	37											
11.78	3.69	.09	36.5											

34 MB BRAVE 129G15

R10416416 | 129G15 | P | GEN: 3 | 05/01/19
 ATLANTA OF SALACOA 488Z
 MB BRAVE 000D
 MB MS HANNIBAL 000B7
 MB YELLOWSTONE 17Y2
 MB MS YELLOWSTONE 129C52
 MB MS INFOCUS 129X4

LAMBERT OF BRINKS 317R3
 MS SVF CADENCE 488X11
 HANNIBAL OF BRINKS 784T6
 MB MS RUGER 000Z3
 MC JETHRO 00S3
 MB MS NEW DIRECTION 17R5
 MYTTY IN FOCUS
 MC MS MADISON 129K4

	CE	BW	WW	YW	MILK	TM	CEM	SC	REA	IMF	FAT	HPREG	STAY	CW
EPD	5.1	0.9	28	53	8	23	3.2	0.50	0.59	0.28	-0.026	2.51	1.11	2.49
%RK	45	60	40	35	55	40	80	45	15	10	90	15	50	75
REA	IMF	Fat	Sc											
365	365	365	365											
11.52	3.50	.10	36											

35 MB BANKS 661H3

R10478323 | 661H3 | P | GEN: 3 | 05/08/20
 TJM THREE D 302A
 MB BANKS 000D6
 MC MS FREIGHTLINER 000M20
 MB YOSEMITE 17Y8
 MB MS YOSEMITE 661D7
 MB MS CRUSADER 661Y3

CB FINAL CUT 924X
 OAKS MS PATTON 302X3
 CONNEALY FREIGHTLINER
 MC MS 189/4-000J22
 MC JETHRO 00S3
 MB MS NEW DIRECTION 17R5
 MB CRUSADER 17W9
 MB MS STRAIGHT LINE 661U9

	CE	BW	WW	YW	MILK	TM	CEM	SC	REA	IMF	FAT	HPREG	STAY	CW
EPD	3.5	2.8	38	66	9	28	3.2	0.89	0.53	0.03	-0.041	2.57	1.76	10.89
%RK	85	95	15	20	45	15	80	15	20	50	55	15	35	>95
REA	IMF	Fat	Sc											
365	365	365	365											
10.17	4.02	.16	37											

36 MB BRAVE 17H4

R10478303 | 17H4 | P | GEN: 5 | 03/21/20
 ATLANTA OF SALACOA 488Z
 MB BRAVE 000D
 MB MS HANNIBAL 000B7
 MB JUSTIFIED 99Z3
 MB MS JUSTIFIED 17D13
 MB MS SUPER TANKER 17Z

LAMBERT OF BRINKS 317R3
 MS SVF CADENCE 488X11
 HANNIBAL OF BRINKS 784T6
 MB MS RUGER 000Z3
 MC REVELATION 129T
 MB MS NEWS MAN 99U
 MB SUPERTANKER 27T7
 MB MS LEAD GUN 17S

	CE	BW	WW	YW	MILK	TM	CEM	SC	REA	IMF	FAT	HPREG	STAY	CW
EPD	5.4	0.8	29	56	11	25	3.5	0.34	0.60	0.20	-0.036	2.51	0.05	-1.37
%RK	35	55	35	30	30	30	55	60	15	20	70	15	90	45
REA	IMF	Fat	Sc											
365	365	365	365											
10.87	4.21	.10	32											

37 MB BANKS 334G3

R10430577 | 334G3 | P | GEN: 2 | 12/17/19
 ATLANTA OF SALACOA 488Z
 MB BRAVE 000D
 MB MS HANNIBAL 000B7
 S A V RESOURCE 1441
 MB MS RESOURCE 334E8
 MB MS V8 960/5334W4

LAMBERT OF BRINKS 317R3
 MS SVF CADENCE 488X11
 HANNIBAL OF BRINKS 784T6
 MB MS RUGER 000Z3
 RITO 707 OF IDEAL 3407 7075
 S A V BLACKCAP MAY 4136
 MR V8 960/5
 MS 48 CENTER RANCH 334/K10

	CE	BW	WW	YW	MILK	TM	CEM	SC	REA	IMF	FAT	HPREG	STAY	CW
EPD	5.1	1.6	35	68	9	26	3.3	0.49	0.62	0.17	-0.032	2.53	1.60	-1.43
%RK	45	75	20	20	45	25	75	45	15	25	85	15	40	45
REA	IMF	Fat	Sc											
365	365	365	365											

38 MB BANKS 129G28

R10430577 | 129G28 | P | GEN: 3 | 11/22/19
 TJM THREE D 302A
 MB BANKS 000D6
 MC MS FREIGHTLINER 000M20
 TJM THREE D 302A
 MB MS THREE D 129D62
 MB MS INFOCUS 129X14

CB FINAL CUT 924X
 OAKS MS PATTON 302X3
 CONNEALY FREIGHTLINER
 MC MS 189/4-000J22
 CB FINAL CUT 924X
 OAKS MS PATTON 302X3
 MYTTY IN FOCUS
 MC MS MADISON 129K4

	CE	BW	WW	YW	MILK	TM	CEM	SC	REA	IMF	FAT	HPREG	STAY	CW
EPD	5.4	2.0	49	89	5	29	3.7	0.80	0.66	0.06	-0.046	2.04	2.25	17.51
%RK	35	80	2	4	90	15	40	20	10	45	30	30	25	>95
REA	IMF	Fat	Sc											
365	365	365	365											
13.21	4.11	.17	40											

39 MB BRAVE 541G6

R10430570 | 541G6 | P | GEN: 4 | 11/09/19
 ATLANTA OF SALACOA 488Z
 MB BRAVE 000D
 MB MS HANNIBAL 000B7
 ATLANTA OF SALACOA 488Z
 MB MS ATLANTA 541C4
 MC MS QUIET LADY 541S2

LAMBERT OF BRINKS 317R3
 MS SVF CADENCE 488X11
 HANNIBAL OF BRINKS 784T6
 MB MS RUGER 000Z3
 LAMBERT OF BRINKS 317R3
 MS SVF CADENCE 488X11
 MC JOHN WAYNE 661N13
 MISS BRINKS HEAVY DUTY 541E7

	CE	BW	WW	YW	MILK	TM	CEM	SC	REA	IMF	FAT	HPREG	STAY	CW
EPD	6.9	-0.5	31	55	9	25	3.9	0.68	0.46	0.25	-0.031	2.39	0.19	-6.03
%RK	15	25	30	35	45	30	25	30	30	15	85	20	85	20
REA	IMF	Fat	Sc											
365	365	365	365											
13.69	4.42	.24	36.5											

40 MB 99F11 75H2

R10478305 | 75H2 | P | GEN: 4 | 03/21/20
 CLVR EL TORO 23C2
 MB EL TORO 99F11
 MB MS REVELATION 99B26
 MB CORDELL 000C2
 MB MS CORDELL 75E8
 MB MS SUPER TANKER 75Z9

CLVR-TJM HUASTEKO 535Z
 CLVR MISS IRIS 23Y1
 MC REVELATION 129T
 MB MS NEWS MAN 99U
 MB RYLAN 129Z19
 MB MS NUFF SAID 000Y20
 MB SUPERTANKER 27T7
 MB MS WATASH 75P4

	CE	BW	WW	YW	MILK	TM	CEM	SC	REA	IMF	FAT	HPREG	STAY	CW
EPD	3.9	2.5	37	70	11	30	3.3	0.46	0.45	0.09	-0.038	2.40	1.09	8.82
%RK	80	90	15	15	30	10	75	45	30	35	65	20	50	95
REA	IMF	Fat	Sc											
365	365	365	365											
10.06	4.58	.15	33.5											

41 MB 99F11 129H24

R10478311 | 129H24 | P | GEN: 3 | 04/27/20
 CLVR EL TORO 23C2
 MB EL TORO 99F11
 MB MS REVELATION 99B26
 HOLLYWOOD OF SALACOA 23A53
 MB MS HOLLYWOOD 129F3
 MB MS YELLOWSTONE 129C28

CLVR-TJM HUASTEKO 535A
 CLVR MISS IRIS 23Y1
 MC REVELATION 129T
 MB MS NEWS MAN 99U
 NEW VISION OF SALACOA 209Y2
 MS SVF PATTON 23Y66
 MB YELLOWSTONE 17Y2
 MB MS INFOCUS 129X4

	CE	BW	WW	YW	MILK	TM	CEM	SC	REA	IMF	FAT	HPREG	STAY	CW
EPD	5.0	1.6	32	66	8	25	3.6	0.72	0.61	0.16	-0.026	2.01	0.77	5.07
%RK	50	75	25	20	55	30	50	25	15	25	90	30	65	85
REA	IMF	Fat	Sc											
365	365	365	365											
9.43	3.52	.09	32											

42

MB 99F11 160H

R10478313 | 160H | P | GEN: 4 | 04/24/20
 CLVR-TJM 535A
 CLVR EL TORO 23C2
 CLVR MISS IRIS 23Y1
 MB EL TORO 99F11
 MC REVELATION 129T
 MB MS NEWS MAN 99U
 CLVR-TJM HUASTECO 535A
 CLVR EL TORO 23C2
 CLVR MISS IRIS 23Y1
 MB MS EL TORO 160F
 MC REVELATION 129T
 MB MS REVELATION 160B5
 MB MS PATTON 160W

	CEP	BW	WW	YW	MILK	TM	CEM	SC	REA	IMF	FAT	HPREG	STAY	DW
EPD	3.1	2.5	38	74	12	31	2.7	0.58	0.52	0.11	-0.029	1.96	0.86	11.22
%RK	90	90	15	15	20	10	95	35	25	30	90	35	60	>95
	REA	IMF	Fat	Sc										
	365	365	365	365										
	9.58	3.53	.12	32										



Visit www.DVAuction.com
 and Register Today!

For General Questions Please Contact Our Office:
 (402) 316-5460 or support@dvauction.com



LOT 43: MB 99F12 111H5

43

MB 99F12 111H5

R10478307 | 111H5 | P | GEN: 3 | 04/19/20 |
 BRINKS BILLY THE KID 468Z1
 MB BILLY THE KID 99F12
 MB MS 165 PATTON 99B5
 CB HOMBRE 541T3
 MS SOUTHERN GIFFORD 468U3
 MB BRINKS PATTON 465Y9
 MB MS STRAIGHT LINE 99Y7
 ATLANTA OF SALACOA 488Z
 MB MS HANNIBAL 000B7
 CONNEALY FINAL PRODUCT
 MC MS ESTO 111R8

	CEP	BW	WW	YW	MILK	TM	CEM	SC	REA	IMF	FAT	HPREG	STAY	DW
EPD	4.4	1.5	33	62	12	29	3.7	0.54	0.62	0.14	-0.034	1.86	0.98	-1.31
%RK	70	70	25	25	20	15	40	40	15	25	80	40	55	45
	REA	IMF	Fat	Sc										
	365	365	365	365										
	10.96	3.65	.15	34.5										

44

MB 99F12 329H6

R10478318 | 329H6 | P | GEN: 3 | 03/31/20
 BRINKS BILLY THE KID 468Z1
 MB BILLY THE KID 99F12
 MB MS 165 PATTON 99B5
 CB HOMBRE 541T3
 MS SOUTHERN GIFFORD 468U3
 MB BRINKS PATTON 165Y9
 MB MS STRAIGHT LINE 99Y7
 JACKSON OF SALACOA 209B4
 STONEWALL OF RRR 222W6
 MS BRINKS BRIGHT SIDE 209L11
 MC ROCK STAR 924U6
 MB MS JACKSON 329F10
 MB MS ROCK STAR 329X24
 MB MS BIG CAT 129M3

	CEP	BW	WW	YW	MILK	TM	CEM	SC	REA	IMF	FAT	HPREG	STAY	DW
EPD	3.8	1.8	30	55	11	55	11	26	0.60	0.13	-0.029	2.05	0.64	2.57
%RK	80	80	30	35	30	35	30	25	15	30	90	30	70	75
	REA	IMF	Fat	Sc										
	365	365	365	365										
	8.70	4.40	.09	31										

45

MB 99F12 27H

R10478292 | 27H | P | GEN: 5 | 04/01/20
 BRINKS BILLY THE KID 468Z1
 MB BILLY THE KID 99F12
 MB MS 165 PATTON 99B5
 CB HOMBRE 541T3
 MS SOUTHERN GIFFORD 468U3
 MB BRINKS PATTON 165Y9
 MB MS STRAIGHT LINE 99Y7
 MB MCCLELLAN 535B5
 MS BRINKS BRIGHT SIDE 209L11
 MC CHISUM 468S8
 MB MS MCCLELLAN 27F2
 MB MS CHISUM 27W3
 MB YOSEMITE 17Y8
 MB MS CAHILL 535Y11
 MC CHISUM 468S8
 KB MISS JESSIE 27J

	CEP	BW	WW	YW	MILK	TM	CEM	SC	REA	IMF	FAT	HPREG	STAY	DW
EPD	4.3	1.6	28	53	10	24	3.3	0.42	0.41	0.09	-0.042	2.35	0.92	4.74
%RK	70	75	40	35	35	35	75	50	40	35	50	20	55	85
	REA	IMF	Fat	Sc										
	365	365	365	365										
	9.89	4.44	.14	36.5										

46

MB 99F12 75H3

R10478326 | 75H3 | P | GEN: 5 | 06/21/20
 BRINKS BILLY THE KID 468Z1
 MB BILLY THE KID 99F12
 MB MS 165 PATTON 99B5
 MB RIDGEWAY 661B3
 MB MS RIDGEWAY 75E7
 MB MS TOO COOL 75Z11
 CB HOMBRE 541T3
 MS SOUTHERN GIFFORD 468U3
 MB BRINKS PATTON 165Y9
 MB MS STRAIGHT LINE 99Y7
 MB DEATH VALLEY 568Y
 MB MS PATTON 661Y5
 MC TOO COOL 1420W30
 MB MS COLEMAN 75X7

	CEP	BW	WW	YW	MILK	TM	CEM	SC	REA	IMF	FAT	HPREG	STAY	DW
EPD	4.3	2.1	33	59	9	26	3.3	0.67	0.53	0.06	-0.032	1.99	0.83	3.94
%RK	70	85	25	30	45	25	75	30	20	45	85	35	60	80
	REA	IMF	Fat	Sc										
	365	365	365	365										
	8.92	4.04	.10	34.5										

47

MB 75F 129H7

R10478297 | 129H7 | P | GEN: 3 | 03/06/20
 MB CLIFTON 541C3
 MB CLIFTON 75F
 MB MS HOLLYWOOD 75D4
 MB GREAT BASIN 329Y5
 MB MS GREAT BASIN 129E47
 MB MS INFOCUS129X16
 MB LEAD GUN 74U18
 MC MS QUIET LADY 541S2
 HOLLYWOOD OF SALACOA 23A53
 MB MS REVELATION 75X2
 MC NUFF SAID 889T50
 MB MS REAL DEAL 329U22
 MYTTY IN FOCUS
 MC MS MADISON 129K4

	CEP	BW	WW	YW	MILK	TM	CEM	SC	REA	IMF	FAT	HPREG	STAY	DW
EPD	6.5	0.2	31	66	12	27	3.5	0.89	0.68	0.20	-0.027	2.53	1.52	8.73
%RK	15	40	30	20	20	20	55	15	10	20	90	15	40	95
	REA	IMF	Fat	Sc										
	365	365	365	365										
	10.89	4.53	.11	32										

48

MB 75F 131H

R10478312 | 131H | P | GEN: 5 | 04/25/20

MB CLIFTON 541C3
MB CLIFTON 75F
MB MS HOLLYWOOD 75D4

MB LEAD GUN 74U18
MC MS QUIET LADY 541S2
HOLLYWOOD OF SALACOA 23A53
MB MS REVELATION 75X2

ATLANTA OF SALACOA 488Z
MB MS ATLANTA 131E
MB MS GUN HAND 131Z

LAMBERT OF BRINKS 317R3
MS SVF CADENCE 488X11
MB LEAD GUN 000U34
MB MS JETHRO 131W

	CEU	BW	WW	YW	MILK	TM	CEM	SC	REA	IMF	FAT	HPREG	STAY	CW
EPD	6.0	0.1	31	60	9	24	3.9	0.56	0.60	0.21	-0.034	2.19	0.54	-3.45
%RK	25	40	30	25	45	35	25	40	15	20	80	25	70	35
REA	365	IMF	Fat	Sc										
	365	365	365	365										
	11.06	3.95	.14	36										

49

MB 75F 129H11

R10478293 | 129H11 | P | GEN: 3 | 03/06/20

TJM THREE D 302A
MB BANKS 000D6
MC MS FREIGHTLINER 000M20

CB FINAL CUT 924X
OAKS MS PATTON 302X3
CONNEALY FREIGHTLINER
MC MS 189/4-000J22
MC NUFF SAID 889T50
MB MS REAL DEAL 329U22
MYTTY IN FOCUS
MC MS MADISON 129K4

MB GREAT BASIN 329Y5
MB MS GREAT BASIN 129E43
MB MS INFOCUS 129X16

	CEU	BW	WW	YW	MILK	TM	CEM	SC	REA	IMF	FAT	HPREG	STAY	CW
EPD	4.3	2.1	37	74	12	31	3.0	1.00	0.69	0.10	-0.040	2.66	2.36	15.32
%RK	70	85	15	75	15	20	10	90	10	35	60	15	15	>95
REA	365	IMF	Fat	Sc										
	365	365	365	365										
	10.02	2.93	.08	31.5										

50

MB 75F 129H28

R10478296 | 129H28 | P | GEN: 3 | 05/09/20

MB CLIFTON 541C3
MB CLIFTON 75F
MB MS HOLLYWOOD 75D4

MB LEAD GUN 74U18
MC MS QUIET LADY 541S2
HOLLYWOOD OF SALACOA 23A53
MB MS REVELATION 75X2

MC PROFIT 924B16
MB MS PROFIT 129E48
MB MS INFOCUS 129X14

MC CROSSOVER 834Y
RBM MS JETHRO 924U2
MYTTY IN FOCUS
MC MS MADISON 129K4

	CEU	BW	WW	YW	MILK	TM	CEM	SC	REA	IMF	FAT	HPREG	STAY	CW
EPD	4.8	1.5	38	69	7	25	2.8	0.99	0.59	0.17	-0.028	2.24	1.17	7.36
%RK	55	70	15	15	75	30	95	10	15	25	90	25	50	95
REA	365	IMF	Fat	Sc										
	365	365	365	365										
	9.25	4.07	.11	29										

52

MB EL TORO 99G9

R10423104 | 99G9 | P | GEN: 4 | 10/02/19

CLVR-TJM HUASTEKO 535A
CLVR EL TORO 23C2
CLVR MISS IRIS 23Y1

CB FINAL CUT 924X
SF MS NEWSMAN 535R3
SVF GARRETT 274 U229
SVF MS 235S101

MC REVELATION 129T
MB MS REVELATION 99B26
MB MS NEWS MAN 99U

MC NEW DIRECTION 000 M24
MB MS NIMITZ 129R
MC NEWS MAN 81H13
MB MS LEAD GUN 99S5

	CEU	BW	WW	YW	MILK	TM	CEM	SC	REA	IMF	FAT	HPREG	STAY	CW
EPD	4.4	1.6	37	75	11	30	3.3	0.35	0.57	0.11	-0.031	2.17	0.66	11.78
%RK	70	75	15	10	30	10	75	55	20	30	85	25	65	>95
REA	365	IMF	Fat	Sc										
	365	365	365	365										
	11.28	3.06	.08	37										



52

MB QUARRY 329G13

R10430556 | 329G13 | P | GEN: 2 | 10/14/19

MC GRANITE 834B
OAKS QUARRY 803D5
LM MS HOMBRE 803B20

MC BOULDER 889Z14
MC MS 778 TRAVELER 834Z
CB HOMBRE 541T3
MS BRINKS LAMBERT 803T6

MC CHISUM 468S8
MB MS CHISUM 329X56
MB MS BIG CAT 129M3

TJM JOHN WAYNE 44L
MISS BRINKS CADENCE 468G15
CCC BIG CAT 209H2
MC MS MADISON 129K4

	CEU	BW	WW	YW	MILK	TM	CEM	SC	REA	IMF	FAT	HPREG	STAY	CW
EPD	1.9	2.9	42	81	10	31	2.3	0.01	0.54	0.13	-0.034	2.66	1.85	5.05
%RK	>95	95	10	10	35	10	>95	95	20	30	80	15	35	85
REA	365	IMF	Fat	Sc										
	365	365	365	365										
	10.74	3.56	.21											

54

MB PROFIT 889G2

R10419509 | 889G2 | P | GEN: 3 | 09/06/19

MC CROSSOVER 834Y
MC PROFIT 934B16
RBM MS JETHRO 924U2

LAMBERT OF BRINKS 317R3
MC MS GUNS 834W3
MC JETHRO 00S3
MISS NMSU 924

MC JETHRO 00S3
MB MS JETHRO 889Y16
MC MS 888 NEW DESIGN 889R8

MC JOHN WAYNE 165N3
MC MS STOUT 00M5
BON VIEW NEW DESIGN 888
MC MS COPANO 889J20

	CEU	BW	WW	YW	MILK	TM	CEM	SC	REA	IMF	FAT	HPREG	STAY	CW
EPD	4.3	2.4	27	39	3	17	2.6	0.84	0.45	0.27	-0.043	3.37	1.08	2.55
%RK	70	90	40	60	95	75	>95	20	30	15	45	3	50	75
REA	365	IMF	Fat	Sc										
	365	365	365	365										
	14.24	4.61	.21	41										



LOT 54: MB PROFIT 889G2

MILLER BRANGUS BULLS - LOTS 1-54

WELCOME

Cattlemen, welcome to the Brands Of Recognition 2nd Annual Sale, held at United Producers in Columbia, TN. Once again the Brands Of Recognition brings you an outstanding offering of Brangus, Charolais, Red Angus plus Red Simangus herd sire prospects.



I'm excited to be working with Bert and Doyle Miller owners and ranch manager Bart Pope of Miller Brangus providing the Brangus bulls offering. Please take note of the new members of the Brands Of Recognition providing the Charolais, Red Angus and Simangus bulls. I know these seedstock producers are committed to offering quality bulls, building a brand you can trust. Bulls that will fit your selection criteria including calving ease, production, carcass and maternal traits. All bulls will have a current Breeding Soundness Exam (BSE) semen test and health papers provided by a licensed veterinarian. Bulls of breeding age and ready to go to work. Please take note most of these bulls qualify for the Tennessee Ag Enhancement Program (TAEP).

I encourage you to contact these seedstock producers and learn more about their bull offering. Please contact me if you have any questions or if I can be of any assistance.

Thank You!
 Luke Mobley
 205-270-0999

MIKE DAVIS CHAROLAIS, MIKE DAVIS



SIRE OF LOT 55: RBM FARGO Y111

55 BMD FARGO TORNADO 025

M950694 | 025 | 09/24/20

SPARROWS FARGO 811U
 RBM FARGO Y111
 HC RHINESTONE 5100

WINN MANS LANZA 6105
 SPARROWS DELIGHT 74L
 LT EASY PRO 1158 PLD
 HC JACK 2082

WC BENELLI 2134 ET
 BMD BINELLI V01
 DDC FRANCIS V01

DA PASSPORT 502 P ET
 JWK CLARICE J139 ET
 KEYS MCHENRY 24M
 DDC FANNIE MAE N24

	CE	BW	WW	YW	MILK	MCE	MTL	SC	REA	FAT	MARB	CW
EPD	6.8	0.3	75	126	26	8.0	63	1.3	0.89	0.020	-0.02	36
%RK	45	60	2	6	30	25	5	10	15	75	95	4

BW 73; Outstanding growth & performance with carcass & maternal and moderate calving ease, Top 3% YW, 4% WW & CW, 9% TSI, 20% REA & Milk

56 BMD PATRIOTS VOLUNTEER 023

M950693 | 023 | 09/22/20

LT LEDGER 0332 P
 LT PATRIOT 4004 PLD
 LK MISS RIO 2119

LT BLUEGRASS 4017 P
 LT BRENDA 6120 PLD
 LK DISTANT RIO 900
 LK MISS SILVER T 059

LT LEDGER 0332 P
 WELCOME GROVEANETTE ET
 M6 761 SUPREME S11

LT BLUEGRASS 4017 P
 LT BRENDA 6120 PLD
 WCR SIR DUKE 761
 MS MS E46 SUPREME 4168ET

	CE	BW	WW	YW	MILK	MCE	MTL	SC	REA	FAT	MARB	CW
EPD	3.1	0.3	73	134	31	3.5	67	1.5	0.86	0.039	0.07	37
%RK	75	60	4	2	7	75	2	4	15	100	70	3

BW 75; Patriot son with lots of growth performance and moderate maternal, Top 20% YW & CW, 25% WW, 30% TSI



SIRE OF LOT 56 & 57: LT PATRIOT 4004 PLD

57 BMD PATRIOTS COLONEL 028 58 BMD HAZEL'S VENTURE 026

M950695 | 028 | 09/26/20

LT LEDGER 0332 P
 LT PATRIOT 4004 PLD
 LK MISS RIO 2119

LT BLUEGRASS 4017 P
 LT BRENDA 6120 PLD
 LK DISTANT RIO 900
 LK MISS SILVER T 059

BAMBOO DUKE 157 ET
 BMD VANILLA ROSE
 BMD SMOKESTER ROSE

VCR SIR DUKE 914 PLD
 GP MS ALI M76 ET
 KTR MR SMOKESTER 260 ET
 BMD PERFECT SILVER

	CE	BW	WW	YW	MILK	MCE	MTL	SC	REA	FAT	MARB	CW
EPD	5.7	-1.0	59	109	29	5.4	58	1.3	0.61	0.026	0.06	27
%RK	55	35	40	35	15	55	15	10	75	85	75	25

BW 78; Calving ease Patriot son with -4 BW EPD, Growth and strong maternal

M950140 | 026 | 09/25/20

LT VENTURE 3198 PLD
 WELCOME GROVE VISITOR
 WELCOME GROVE BELL 630

LT STAGECOACH 8068 PLD
 LT BALLET 9219 POLLED
 MAY PAYROLL 3021 ET
 MR MS IMPRESSIVER 405

SC-PCF CIGAR 509 P ET
 CMF 401T HAZEL 68C
 CMF 375P HAZEL 401T

LHD CIGAR E46
 WCR MISS TRADITION 9612P
 BALDRIDGE KOJACK 29K
 CMF 302M HAZEL 375P

	CE	BW	WW	YW	MILK	MTL	SC	REA	FAT	MARB	CW
EPD	5.1	0.5	61	113	20	50	0.6	0.64	0.009	-0.05	23
%RK	60	65	30	25	70	55	80	65	50	100	40

BW 81; Growth bull with moderate carcass, Top 25% WW & YW.

DVAuction

Broadcasting Real-Time Auctions

MUELLER CHAROLAIS, TIM MUELLER

**GRANDSIRE OF LOT 59-61:
RAILE SOVEREIGN J827 Y064**



59 TMC STANDARD 06P

M942852 | 06P | 03/18/20

RAILE SOVEREIGN J827 Y064 WIA SOVEREIGN P WEAVERS CHERI 0805	FINK 8790 OF 2126 GM RC NICHOLE T082 V175 JDJ SMOKESTER J1377 P ET BH H45 MS MAC N05
PJ NEW STANDARD 123 P TMC MISS RUBIES STANDARD 324P TMC MISS RUBY 503P	M6 NEW STANDARD 842 P ET PJ MS TRADEMARK 501 P TO UNLTD E Z TOY 0126PET TMC MISS RUBY 228P

	CE	BW	WW	YW	MILK	MCE	MTL	SC	REA	FAT	MARB	CW
EPD	5.5	-0.2	59	108	24	0.5	53	0.6	0.77	-0.010	-0.07	17
%RK	55	50	40	35	40	90	40	90	35	15	100	70

BW 85, Adj WW 674, Adj YW 1212
 Thick & smooth polled bull with great disposition, Lots of performance Ratio 109 WW & 108 YW

60 TMC STANDARD 010P

M943711 | 010P | 04/24/20

RAILE SOVEREIGN J827 Y064 WIA SOVEREIGN P WEAVERS CHERI 0805	FINK 8790 OF 2126 GM RC NICHOLE T082 V175 JDJ SMOKESTER J1377 P ET BH H45 MS MAC N05
PJ NEW STANDARD 123 P TMC MISS NELLIE 321P TMC MISS NELLIE 405 P	M6 NEW STANDARD 842 P ET PJ MS TRADEMARK 501 P BALDRIDGE FASTTRACK 82F TMC MISS NELLIE 930P

	CE	BW	WW	YW	MILK	MCE	MTL	SC	REA	FAT	MARB	CW
EPD	6.3	-0.5	52	94	26	1.6	53	0.5	0.72	-0.08	-0.10	16
%RK	50	45	70	75	25	90	40	90	45	20	100	75

BW 82, Adj WW 663, Adj YW 1394
 Smooth in the shoulders and smooth polled with maternal, Top 20% Milk, 15% Fat

61 TMC TURTON 853P

M913001 | 853P | 01/20/18

RAILE SOVEREIGN J827 Y064 WIA SOVEREIGN P WEAVERS CHERI 0805	FINK 8790 OF 2126 GM RC NICHOLE T082 V175 JDJ SMOKESTER J1377 P ET BH H45 MS MAC N05
M6 GRID TEN 225 TMC MISS AVA 542P GP PAMELA L39 ET	KEYS TEN-ACIOUS 166S PJ MS. GRIDMAKER 602 P LHD CIGAR E46 JWK GENIE G113 ET

	CE	BW	WW	YW	MILK	MCE	MTL	SC	REA	FAT	MARB	CW
EPD	4.3	0.9	58	99	28	3.3	57		0.91	-0.016	-0.15	18
%RK	65	70	50	60	20	75	25		10	20	100	40

BW 85, Adj WW 747, Adj YW 1220
 Great disposition bull with lots of growth, maternal and carcass, Top 15% Milk REA & Fat, Adj WW of 747 with a ratio of 122.

62 TMC RUPERT 04P

R10478326 | 75H3 | 06/21/20

RAILE 2250 T077 BCC5 BULLARD RUPERT ET BCC5 LADY FIRE	FINKS 2250 OF 3575D040ET RC FRANCESCA 0251 TR MR FIRE WATER 5792RET LAFRAISE ANN MARIE 957
BALDRIDGE FASTTRACK 82F TMC MISS RUBY 410 P TWN TMC MISS RUBY 686P	LT UNLIMITED EASE 9108 BALDRIDGE SWEETHEART 53D TR INTIMIDATOR 2412 PLD TMC MISS RUBY 935P

	CE	BW	WW	YW	MILK	MCE	MTL	SC	REA	FAT	MARB	CW
EPD	2.8	1.4	44	78	24	5.2	46	0.3	0.47	0.005	0.04	11
%RK	80	85	95	100	40	55	75	100	95	45	80	95

BW 90, Adj WW 573, Adj YW 1300
 Growth & performance bull with carcass, Top 20% REA, 35% CW

63 TMC RHINESTONE 016P

R10478297 | 129H7 | 03/06/20

RBM TR RHINESTONE Z38 BCC5 BULLARD GEM ET LAFRAISE CHARM 656	LT BLUEGRASS 4017 P HC RHINESTONE 5100 TR SMOKEONTHWATER ET LAFRAISE CHARM 460
COOLEY ROYCE 1107T39 DC MS POMONA ROYCE C424P DC MS POMONA DUKE HENRY C938P	SCHURRTOP HCR RANCHER MS COOLEY S DUKE 1107N60 DC POMONA DUKE C702P HALES MS MCHENRY Z113

	CE	BW	WW	YW	MILK	MCE	MTL	SC	REA	FAT	MARB	CW
EPD	8.1	-1.1	51	109	20	5.6	45	0.8	0.65	0.007	0.12	18
%RK	30	35	80	35	70	50	80	70	65	50	50	65

BW 85, Adj WW 700, Adj YW 1210
 RBM TR Rhinestone Z38 grandson, Calving ease bull that still weaned over 700 lbs. Top 25% TSI

OSBORN RED ANGUS, DANNY OSBORN

64 OSBORN ULTIMATUM 403H

R4309773 | 403H | 02/16/20 | TAEP: Term

5L BOURNE 117-48A
ANDRAS ULTIMATUM E026
ANDRAS OSCE 9017

5L ADVANTAGE 3267-221Y
5L ROXIE 854-117
BECKTON NEBULA L P093
ANDRAS OSCE 7033

WRAF KING JR
JEM ROBIN 1032
JEM ROBIN 634

LMAN KING ROB 8621
LONK MISS JR J979
WRAF KING JR
JEM ROBIN 0149

	CE	BW	WW	YW	MILK	ME	CEM	MARB	REA	YG	FAT	HPREG	STAY	CW
EPD	9	-0.1	67	106	32	10	5	0.31	0.15	0.08	0.03	14	13	23
%RK	91	81	23	27	4	90	83	73	37	61	72	13	80	39

BW 73, Adj WW 696, Added pounds with this bull Top 22% WW, 27% YW, 5% Milk, stout. as they come, GE-EPD's

65 OSBORN ULTIMATUM 405H

R4309753 | 405H | 02/27/20

5L BOORNE 117-48A
ANDRAS ULTIMATUM E026
ANDRAS OSCE 9017

5L ADVANTAGE 3267-221Y
5L ROXIE 854-117
BECKTON NEBULA L P093
ANDRAS OSCE 7033

BASIN HOBO 79E
JEM BERTHA 1022
BULL HILL BERTHA 7109

BUF CRK HOBO 2595
DOUBLE FORK 079Z
LMG GILLS MONTMENT 4562
BULL HILL BERTHA 4077

	CE	BW	WW	YW	MILK	ME	CEM	MARB	REA	YG	FAT	HPREG	STAY	CW
EPD	10	-1.0	61	88	33	5	5	0.43	0.10	0.11	0.05	6	20	15
%RK	84	66	46	68	2	71	90	43	49	80	95	98	5	69

BW 77, Adj WW 736, Stout made bull with tons of growth. He checks all the boxes., GE-EPD's.

66 OSBORN FUSION 404H

R4309751 | 404H | 02/23/20

ANDRAS FUSION C004
ANDRAS FUSION E130
ANDRAS MISSY B185

ANDRAS FUSION R236
ANDRAS NELL A031
ANDRAS THUNDER R196
ANDRAS MISSY 0007

ANDRAS LEGEND X11
OOF OMAK 1230
MONTVUE M375 RAC R078

ANDRAS LEGEND 7118
ANDRAS ANGELA 8125
BECKTON LANCER M375 TD
LCC RAC NA586

	CE	BW	WW	YW	MILK	ME	CEM	MARB	REA	YG	FAT	HPREG	STAY	CW
EPD	13	-1.4	64	104	26	-4	8	0.30	0.18	0.00	10	16	22	43
%RK	39	58	32	32	40	25	35	77	32	21	19	62	38	43

TAEP: BAL. CE & Term, BW 72, Adj WW 732, Calving ease with growth & carcass this bull does it all, Buy him with confidence, GE-EPD's.

67 OSBORN FUSION 407H

R4309743 | 407H | 03/10/20

ANDRAS FUSION C004
ANDRAS FUSION E130
ANDRAS MISSY B185

ANDRAS FUSION R236
ANDRAS NELL A031
ANDRAS THUNDER R196
ANDRAS MISSY 0007

OSBORN EXTRA THICK 1509
975 835F SMEENKS DIRECTION
SMEENK LITTLE BIT 6A07

ANDRAS EXTRA-THICK 8070
ANDRAS MISSY 6111
ANDRAS NEW DIRECTION R240
MPH BELLA A07

	CE	BW	WW	YW	MILK	ME	CEM	MARB	REA	YG	FAT	HPREG	STAY	CW
EPD	16	-2.1	58	95	26	-2	10	0.30	0.01	0.08	0.04	12	25	7
%RK	12	42	56	53	40	29	7	77	70	64	87	36	1	91

TAEP: Bal & CE; BW 70, Adj WW 702, Heifer bull with big time maternal built in Top 3% ProS, 1% HB 7% CE, GE-EPD's

DIXON RED ANGUS, JED DIXON



SIRE OF LOT 68:
WFL PROFITMAKER E7030

68 DIX MAKING PROFIT 176H

R4325295 | 176H | 02/01/20

WFL MERLIN 018A
WFL PROFITMAKER E7030
WFL PROSPECT

LJC MERLIN T179
WFL COMMITMENT 042Y
LSF PROSPECT 2035Z
WFL HOBO 140Z

ANDRAS EPIC 1070
OSBORN MS ANGEL 1408
OOF ANGEL 0233

MLK CRK EPIC 9175
ANDRAS PURE STYLE 8075
RD FREEDOM 33G
OOF ANGEL 435

	CE	BW	WW	YW	MILK	ME	CEM	MARB	REA	YG	FAT	HPREG	STAY	CW
EPD	14	-2.9	56	83	30	-8	7	0.19	0.04	0.02	0.01	12	16	10
%RK	32	29	64	77	12	14	53	95	63	28	39	37	50	86

TAEP: BAL. & CE, BW 73, ADJ WW 619, Heifer bull Top 16% HB Herd Builder, Easy keeper 14% ME Maintenance Energy.

69 DIX ATOMIC 180H

R4325299 | 180H | 01/27/21

ANDRAS FUSION R236
BIEBER CL ATOMIC C218
BIEBER DATELINE 308Y

ANDRAS IN FOCUS B175
ANDRAS BELLE B167
HUST CHIEF SEQUOYA R336
BASIN ROSE 7127

LCOC EXTRA A071S
ANDRAS MISSY 9059
COF MISSY

SCHULER SILVER BULLET 4604P
LCHMN ELEANOR J1266
ANDRAS EASY MAN 706
COF ANGIE

	CE	BW	WW	YW	MILK	ME	CEM	MARB	REA	YG	FAT	HPREG	STAY	CW
EPD	13	-2.0	56	100	31	4	9	0.42	0.04	0.03	0.01	13	19	9
%RK	37	46	63	40	8	63	16	45	63	31	43	22	12	87

BW 71, Adj WW 640
Heifer bull with loads of maternal, 9 EPD's in the top 1/3 of the breed, GE-EPD's



SIRE OF LOT 69:
BIEBER CL ATOMIC C218

C&J RED ANGUS RANCH, KEITH MERRITT

C & J RED ANGUS 70 & SIMANGUS 71 & 72



LOT 70: C19J HIGH CALIBER

70

C19J HIGH CALIBER

R 4302755 | C19J | 01/28/20

HXC CONQUEST 4405P
LSF TAKEOVER 9943W
LSF WIDELOAD R5014 U8061

BECKTON JULIAN GG B571
HXC ELLIE MAY MA638
MESSMER PACKER S008
LSF WIDELOAD N3195 R5014

LCF BORIS 110B
LCF ERIKA 556
LCF ROXANNE 126R

BECKTON EPIC R397 K
BROWN MS CHEROKEE M6760
STRAUB KING
LH 636

	CEU	BW	WW	YW	MILK	ME	CEM	MARB	REA	YG	FAT	HPREG	STAY	CW
EPD	10	-4.0	55	83	29	1	3	0.54	0.25	0.01	0.03	12	13	12
%RK	85	14	69	77	15	44	97	22	20	23	79	38	77	80

BW 69, Adj WW 793, Adj YW 1191

LSF Takeover son, Calving ease bull with balanced EPD's and maternal, Top 16% Milk, Look at that spread birth weight of 69 pounds and adjusted weaning weight of 793.

71

MB MCLELLAN 99G9

R4302759 | 99G9 | 01/10/20

VPFS BRANTZ 12B
EMINENCE AVE13
BOURBON AFB1

CROSSROAD RADIUM 789U
VPFS LILY 11X
ANCHOR T LEGEND 7H
MISS CJ Z201

LSF TBJ TAKEDOWN 4857B
LCF EMMA 508E
LCF MS VACATION 257U

LSF TAKEOVER 9943W
SRR DORY-JIBA 0121-663
BROWN REVELATION P7021
BROWN MS VACATION P6845

	CEU	BW	WW	YW	MILK	ME	CEM	MARB	REA	YG	FAT	HPREG	STAY	CW
EPD	13	-0.2	64	96	31	-7	7	0.09	0.73	-0.034	-0.06	9	12	18
%RK	48	79	35	49	7	16	43	99	1	1	1	89	85	59

50% AR/ 50% SM, BW 64, Adj WW 707, Adj YW 1334

Sired by Eminence AVE13 a son of VPFS Brantz 12B and out of a LSF Takedown daughter, Calving ease with growth carcass & maternal, Top 1% YG REA & Fat, 7% Milk

72

C19J 55G HIGH EXPECTATIONS

R4307315 | C19J 55G | 03/12/20

VPFS BRANTZ 12B
EMINENCE AVE13
BOURBON AFB1

CROSSROAD RADIUM 789U
VPFS LILY 11X
ANCHOR T LEGEND 7H
MISS CJ Z201

LCF BORIS 110B
LCF ERIN 555E
LCF ROXANNE 126R

BECKTON EPIC R397 K
BROWN MS CHEROKEE M6760
STRAUB KING
LH 636

	CEU	BW	WW	YW	MILK	ME	CEM	MARB	REA	YG	FAT	HPREG	STAY	CW
EPD	8	0.1	51	72	33	-10	4	-0.07	0.61	-0.34	-0.06	11	17	13
%RK	95	84	79	89	2	9	94	99	1	1	1	43	28	77

50% AR 50% SM, Sired by Eminence AVE13 a son of VPFS Brantz 12B with lots of growth carcass & maternal, Top 1% YG REA & Fat, 2% Milk, Adjusted weaning weight of 743 pounds.

MILLER COMMERCIAL BULLS BRANGUS X CHAROLAIS

LOT 73: DOB 03/26/2020, BW 68

LOT 74: DOB 04/11/2020, BW 77

**THESE BULLS FULL PEDIGREE AND EPD'S
WILL BE ON THE UPDATE SHEET:**

LOT 6: MB TORO 889G13: DOB 10/9/2019, SIRED BY CLVR EL TORO 23C2

LOT 21: MB BOTTOM LINE 329G19: DOB 10/14/2019, SIRED BY MB YOSEMITE 129 E17

LOT 28: MB RIDGEWAY 568H3: DOB 11/10/2019, SIRED BY MB RIDGEWAY 661B3

LOT 51: MB MCLELLAN 568G10: DOB 11/19/2019, SIRED BY 535B5

Tennessee Agricultural Enhancement Program (TAEP): Every effort has been made to offer the most current, correct information available.

Nevertheless it is the buyers responsibility to make sure the purchased bull meets TAEP requirements.

Please contact TDA representative Ryan Betzelberger, livestock.genetics@tn.gov for more information.



Col. Luke Mobley 205.270.0999

600 West Pine St.,
Batesville AR. 72501

BRANDS OF RECOGNITION SALE

NOVEMBER 6, 2021 @ 12:00 NOON

UNITED PRODUCERS BARN | 1231 INDUSTRIAL PARK RD
COLUMBIA, TN



**FEATURING
BRANGUS, CHAROLAIS,
RED ANGUS & SIMANGUS
BULLS**

