



**LOUISIANA ANGUS
ASSOCIATION**
1.28.2023 *Bull Sale*

SATURDAY • KINDER LIVESTOCK AUCTION IN KINDER, LA • NOON

TWO-YEAR-OLD & LONG YEARLING BULLS • CALVING EASE BULLS AND HIGH PERFORMANCE BULLS
ALL BULLS WILL HAVE GENOMIC-ENHANCED EXPECTED PROGENY DIFFERENCES (GE-EPDS)

GENERAL SALE INFORMATION

Sale Location: Kinder Livestock Auction
13008 US HWY 190, Kinder, LA

Sale Schedule and Inspection of Cattle:

Friday January 27:

Cattle Available for inspection at sale facility

Saturday January 28:

7:00 Cattle available for viewing

11:00 Lunch

12:00 Louisiana Angus Association Sale

Sale Staff:

Luke Mobley, Sale Manager/Auctioneer 205-270-0999
Will Harsh, American Angus Association 704-272-1386
Will Scoggins, Special Assignment 903-285-0110
Bob Burford, LAA President 318-464-8858
Lee Robbins, LAA Vice President/Sale Committee 318-623-8762
Dale Schexnayder, LAA Treasurer 225-223-9242
Lana Myers, LAA Secretary 337-249-3913
David Billingsley, Sale Committee 318-426-4320

Absentee Bidding: Bid with confidence from the comfort of your home; simply call any member of Sale Staff or Consignor. All phone bidders are required to register for bidder number before the sale. Registration begins Saturday morning.

Online Bidding: **LiveAuctions.TV** Online bidding available through LiveAuction.TV, to register watch or bid please visit www.LiveAuction.TV Please register prior to sale. For questions or technical support please call 682-816-4900 or via email TechSupport@LiveAuction.TV After the sale buyers should contact Mobley Livestock Marketing to arrange payment & pickup or delivery of purchase(s).

Terms and Conditions: Full settlement must be made to sale clerk the day of the sale. Cash or check only. The auctioneer will settle any disputes as to bids. Cattle sell under the suggested terms and conditions of the American Angus Association (https://www.angus.org/pub/suggested_sale_terms.pdf)

Health: Complete health papers will be provided on all cattle suitable for immediate shipment. All cattle will have proper vaccinations. Sale Day Veterinarian, Amanda Morse, 318-625-2902.

Updates and Announcements: A supplemental update sheet will be available sale day with complete and up-to-date information. Announcements from the block take precedence over all printed material.

Insurance: Insurance will be available on purchased cattle if desired. Please ask Mobley Livestock Marketing staff for more information.

Trucking: Truckers believed to be reliable will be available to assist with shipping. Please ask Mobley Livestock Marketing staff for more information.

Liability: Anyone attending the sale do so at their own risk. Neither Mobley Livestock Marketing Staff, Sale Staff, Louisiana Angus Association, or Livestock Owners will be held liable for any injury, property loss or accident that may occur to attendees or purchased animals. Mobley Livestock Marketing and Louisiana Angus Association acts as agents only, agreement is between buyers and seller.

Sale Accommodations:

Holiday Inn Express Eunice (30 min East of barn):

1698 HWY 190 West, Eunice, LA 337-546-2466

Best Western Inn: 12102 US-165, Kinder, LA 337-738-4800

Food and Refreshments: Available at sale site, Lunch served at 11a.m.

Sale Managed By:

Col. Luke Mobley 205-270-0999

www.LukeMobley.com

LukeMobley1@gmail.com



AM EPDs contained in the hard copy of this sale book were current as of print date. Digital versions of this sale book can be viewed online at www.angus.org and will have EPDs updated every Friday with the exception of EPD references in footnotes and photos. Any PDF downloads from the website will contain EPDs current as of the date downloaded. References: American Angus Association®, AHIR®, AngusLink®, CAB®, Pathfinder®.

Cattlemen welcome to the 2023 Louisiana Angus Association Bull Sale.

I'm delighted to be working with the Louisiana Angus Association and this great group of consignors. This select group of Angus Seedstock producers brings to you an excellent set of Angus bulls. Providing you the genetics capable of advancing your herd production. Angus bulls that are adapted to the Louisiana environment, developed and raised in the South.

Louisiana Angus Association is committed to providing the most accurate data available, providing you the information needed to buy with confidence. All bulls will have genomic-enhanced expected progeny differences (GE-EPDs), increasing predictability and decreasing risk due to enhanced accuracy of EPDs. All bulls will have a current semen test, trich test and breeding soundness exam (BSE).

As demand for Angus genetics increases, now is the time to take advantage of these two-year-old and coming two-year-old Angus bulls that are ready to go to work for you. I encourage you to contact these Angus breeders to learn more about their Angus bull offering.

I look forward to seeing you in Kinder, Louisiana, at the 2023 Louisiana Angus Association Bull Sale. Please contact me if you have any questions or if I can be of any assistance!

Thank You!
Luke Mobley
205-270-0999



LOUISIANA ANGUS ASSOCIATION - CONSIGNORS

- | | |
|---|--|
| Lots..... 1-2
Grand Bayou Farms,
Lee Robbins
1011 Hunt Ln., Ruston, LA 71270
(318) 623-8762
robbs@grandbayoufarms.com | Lots..... 29- 32
Baker Farms
Donald Baker
6570 County Road 23, Fayette, AL 35555
(205) 270-8989
jbak8170@yahoo.com |
| Lots..... 3- 5, 39-40
Michael Rister Farms LLC
Michael Rister
4857 Highway 175, Frierson, LA 71027
(318) 458-6921
mrister15@aol.com | Lots..... 33- 38
Darnall Place Farm
Carroll Boudreaux, Jr.
1401 Parkview Dr., New Iberia, LA 70563
(337) 365-8111
carroll.boudreaux.b273@statefarm.com |
| Lots..... 6-9
LongShot Farms
Jarod & Ashley Long
2709 8th Ave NW, Fayette, AL 35555
(205) 442-1613
jarodlong@gmail.com | Lots..... 41- 42
Twin Silo's Farms LLC
Clint Cooksey
3721 Highway 459, Jena, LA 71342
(318) 312-0943
clcooksey08@gmail.com |
| Lots..... 10-13, 53-54
Pine Tree Ranch
Enyart Mitchell
160 Elizabeth Ln., Coushatta, LA 71019
(318) 471-0030
enyart@pinetreeangus.com | Lots..... 43- 49
Windham Farms
Kevin E. Windham
PO Box 699, Jena, LA 73142
(318) 992-3401
kevinwindham@centurytel.net |
| Lots..... 14-17
Kaberlein Angus Ranch
Mike Kaberlein
61252 Vining Rd., Amite, LA 70422
(504) 495-7158
mikek@llox.com | Lot56
Bryan TOP Angus
Warren Bryan
2510 Foxx Creek Dr., Ruston, LA 71270
(318) 245-1947
warren.bryan1947@icloud.com |
| Lots..... 18, 50
Roseneath Plantation
David B. Means, III
5030 Hwy 5, Gloster, LA 71030
(318) 294-4968
roseneath@aol.com | Lot57
Blackhorn Cattle Company
John Thornton
225 Old Highway 84, Tullos, LA 71479
(318) 452-6418
jhyoung121314@yahoo.com |
| Lots..... 19, 51
Schexnayder Cattle Farm
Dale Schexnayder
38380 Highway 942, Darrow, LA 70725
(225) 473-3954
schex1983@icloud.com | Lots..... 58- 64
Lone Wolf Land Co LLC
Earl P. Lemoine
PO Box 443, Moreauville, LA 71355
(318) 452-5503
kklemino@yahoo.com |
| Lots..... 20, 52
A&K Farm
Kyle Baker
13740 Deerlick Rd., Tuscaloosa, AL 35406
(205) 270-8299
kylebak28@yahoo.com | Lots..... 65- 66
Circle H Farms
Arlene Hargroder
7607 Sand Pit Rd., Abbeville, LA 70510
(337) 893-9704
vrb1224@yahoo.com |
| Lots..... 21- 28
Fulper Angus Farm
Jody & Chris Fulper
PO Box 621, Booneville, MS
(662) 416-4424
jefulper@gmail.com | |



GB FIREBALL 672 -
SIRE OF LOT 1



G A R ASHLAND -
SIRE OF LOT 2



1 GB FIREBALL 115

09-10-2021 Bull *20393678 Tattoo: 115

*G A R Sure Fire 6404		**G A R Sure Fire		Adj IMF
18690054 *GB Anticipation 432		*G A R Complete N281		5.64
*G A R Ashland		*G A R Anticipation		BW
*G A R Ashland 818		GB Ambush 269		62
19342630 *G A R In Sure 614		*G A R Early Bird		Adj WW
*G A R Complete 3011		*Chair Rock Ambush 1018		13.1
*G A R Complete 3011		#*Connealy In Sure 8524		Adj Rib Fat
*G A R Complete 3011		*G A R Complete 3011		570
*G A R Complete 3011		*G A R Complete 3011		Adj YW
*G A R Complete 3011		*G A R Complete 3011		1028
*G A R Complete 3011		*G A R Complete 3011		Adj Rmp Fat
*G A R Complete 3011		*G A R Complete 3011		.37

CED	BEPD	WEPD	YEPD	RADG	SC	DOC
+13 10%	+1.0	+87 3%	+153 3%	+32 10%	+1.28 25%	+26 15%
CLAW	ANGLE	HS	MILK	CW	MARB	RE
+55	+46	+15 3%	+34 10%	+81 2%	+1.94 1%	+1.61 1%
FAT						
+.014						
\$M	\$W	\$F	\$G	\$B	\$C	
+70	+88 1%	+126 2%	+127 1%	+253 1%	+398 1%	

Consigned by: Grand Bayou Farms, Lee Robbins
Calving ease bull with explosive growth, good structure, with elite marbling and ribeye. One of the top Fireball sons to date. Retaining 1/2 Semen Interest.

2 GB ASHLAND 18

09-02-2021 Bull **20396153 Tattoo: 18

*G A R Early Bird		*G A R Daylight		Adj IMF
*G A R Ashland		*G A R Progress 830		5.30
18217198 *Chair Rock Ambush 1018		**B/R Ambush 28		BW
*Chair Rock Ambush 1018		*G A R Yield Grade N366		54
*Chair Rock Ambush 1018		#C R A Bextor 872 5205 608		Adj WW
*Chair Rock Ambush 1018		*G A R Objective 1885		14.8
*Chair Rock Ambush 1018		#Summitcrest Complete 1P55		Adj Rib Fat
*Chair Rock Ambush 1018		*Chair Rock 5050 G A R 8174		712
*Chair Rock Ambush 1018		*Chair Rock 5050 G A R 8174		.25
*Chair Rock Ambush 1018		*Chair Rock 5050 G A R 8174		Adj YW
*Chair Rock Ambush 1018		*Chair Rock 5050 G A R 8174		1125
*Chair Rock Ambush 1018		*Chair Rock 5050 G A R 8174		Adj Rmp Fat
*Chair Rock Ambush 1018		*Chair Rock 5050 G A R 8174		.38

CED	BEPD	WEPD	YEPD	RADG	SC	DOC
+9	-.3 20%	+87 3%	+140 10%	+.25	+.69	+23
CLAW	ANGLE	HS	MILK	CW	MARB	RE
+59	+49	+28 10%	+34 10%	+61 20%	+1.27 5%	+92 15%
FAT						
+.012						
\$M	\$W	\$F	\$G	\$B	\$C	
+71	+94 1%	+86	+86 3%	+172 15%	+294 10%	

Consigned by: Grand Bayou Farms, Lee Robbins
Massive Ashland son with a low birth weight and tremendous growth. You'll want to keep his daughters.

3 RISTER GREATER GOOD 9923

09-28-2021 Bull *20182074 Tattoo: 9923

*G A R Ashland		*G A R Early Bird		Adj IMF
*G A R Greater Good		*Chair Rock Ambush 1018		
19362382 *G A R Sure Fire A5008		**G A R Sure Fire		BW
*G A R Sure Fire A5008		*G A R Mandate A2011		65
*G A R Sure Fire A5008		#*Connealy Black Granite		Adj WW
*G A R Sure Fire A5008		Bar R Iris Anita 0113		716
*G A R Sure Fire A5008		*Callaways Cure All 1353		Adj Rib Fat
*G A R Sure Fire A5008		*SQ 27R of 3540 FD		716
*G A R Sure Fire A5008		*SQ 27R of 3540 FD		Adj YW
*G A R Sure Fire A5008		*SQ 27R of 3540 FD		1330
*G A R Sure Fire A5008		*SQ 27R of 3540 FD		Adj Rmp Fat
*G A R Sure Fire A5008		*SQ 27R of 3540 FD		

CED	BEPD	WEPD	YEPD	RADG	SC	DOC
+9	+1.5	+84 5%	+151 4%	+34 3%	+.54	+20
CLAW	ANGLE	HS	MILK	CW	MARB	RE
+65	+43 25%	+35 20%	+34 10%	+74 5%	+97 20%	+1.07 4%
FAT						
-.025 10%						
\$M	\$W	\$F	\$G	\$B	\$C	
+54	+83 3%	+118 4%	+77 10%	+195 3%	+307 5%	

Consigned by: Michael Rister Farms LLC., Michael Rister
You won't find any holes in this bull with Greater Good on the top side, and the dam out of a well known CoX Rita Donor cow from Rimrock Productions sired by Jet Black. This bull's pedigree backs up his EPDs, and is top 5% of the breed indexes for \$W, \$F, \$B, and \$C.

4 RISTER SALVATION 9964

10-18-2021 Bull *20201351 Tattoo: 9964

***SG Salvation**
19559741 *MGR JP Rita 7037

ANGUS
*Byergo Black Magic 3348

***RMK Blackcap 9964**
19697012 *Springfield Blackcap 4139

SAXH: +215 1% SAXL: +196 3%

Poss Easy Impact 0119
Baldridge Blackbird A030
*Basin Payweight 1682
*MGR Rita 2145
*Silveiras Conversion 8064
*Byergo Elia Cupcake 5900
*Rito 12E7 of 5F56 Rito 5M2
*Springfield Blackcap 1156

CED	BEPD	WEPD	YEPD	RADG	SC	DOC	
+8	+1.6	+70 25%	+126 25%	+29 20%	+59	+14	
CLAW	ANGLE	HS	MILK	CW	MARB	RE	FAT
+51	+48	+75	+38 2%	+66 15%	+1.20 10%	+1.06 5%	+0.01
\$M	\$W	\$F	\$G	\$B	\$C		
+74 20%	+78 10%	+111 10%	+86 3%	+196 3%	+328 2%		

Consigned by: Michael Rister Farms LLC., Michael Rister
This bull leads the pack in carcass and maternal. This Salvation son holds on to growth while also improving efficiency to help level out feed costs. This bull puts the whole package together with a top 2% SC at +328.

7 LSF ASCEND 2116

09-09-2021 Bull *20220563 Tattoo: 2116

***E W A Ascend 7306**
19054050 *E W A 3128 of 9067 Weigh Up

ANGUS
*G A R Ashland

***LSF Ashland 8916**
19458733 *Hillside Anticipation T116

SAXH: +166 10% SAXL: +206 2%

*G A R Momentum
*G A R Progress
*G A R Big Eye 1770
*Plattemere Weigh Up K360
*Rita 9067 of Rita 5M13 Obj
*G A R Early Bird
*Chair Rock Ambush 1018
*G A R Anticipation
*Hillside All In T88

CED	BEPD	WEPD	YEPD	RADG	SC	DOC	
+9	+2.8	+100 1%	+173 1%	+30 15%	+65	+22	
CLAW	ANGLE	HS	MILK	CW	MARB	RE	FAT
+49	+52	+63	+29	+78 3%	+1.54 1%	+90 15%	-0.01
\$M	\$W	\$F	\$G	\$B	\$C		
+41	+84 2%	+107 15%	+100 1%	+206 2%	+308 5%		

Consigned by: LongShot Farms, Jarod & Ashley Long
Don't miss out on obtaining a great son of E W A Ascend that can be used on heifers or mature cows. He has Multiple EPDs in the top 10% or better. This bull will add pounds to his offspring and create great marbling for those farmers looking to get top \$\$ from the rail or producers. He scored a perfect foot score and is very docile. Adjusted Ultrasound Data: %IMF 5.11, Ribeye 11.2, Rib Fat .15, Rump Fat .15

5 RISTER ENFORCER 9069

08-05-2021 Bull *20182073 Tattoo: 9069

***S S Enforcer E812**
19274932 #S S Miss Daybreak K011 3K17

ANGUS
*G A R Inertia

***Jetset Glory 9069**
19493680 *Jetset Denver Blackcap 412

SAXH: +130 SAXL: +135 20%

*SydGen Exceed 3223
SydGen Rita 2618
S S Daybreak K011
S S Miss Incentive X19
*G A R Momentum
*G A R Prophet 2984
*EXAR Denver 2002B
*R B Blackcap 212

CED	BEPD	WEPD	YEPD	RADG	SC	DOC	
+0	+3.5	+96 1%	+165 1%	+35 2%	+90	+19	
CLAW	ANGLE	HS	MILK	CW	MARB	RE	FAT
+49	+54	+69	+30 25%	+75 4%	+53	+77	-0.12 20%
\$M	\$W	\$F	\$G	\$B	\$C		
+69	+86 2%	+120 3%	+51	+171 15%	+291 10%		

Consigned by: Michael Rister Farms LLC, Michael Rister
If you are looking for a bull that will add pounds at weaning, this is your bull. This son of S S Enforcer is top 1% for the breed for Weaning and Yearling weights, and is balanced enough to be in the top 10% for SC.

8 LSF REVELATION 2176

10-18-2021 Bull *20227057 Tattoo: 2176

***V A R Revelation 6299**
18432146 *Sandpoint Blackbird 8809

ANGUS
*Mead Magnitude

***LSF Journey 1976**
19358583 KL3 Journey Lass 076

SAXH: +164 10% SAXL: +186 4%

*Quaker Hill Rampage 0A36
#MCC Daybreak
*QHF Blackcap 6E2 of V16 4355
*Connealy Onward
*Rivbend Blackbird 4301
*K C F Bennett Southside
*Mead Primrose N198
*WR Journey-1X74
Fulper In Focus Lass 081

CED	BEPD	WEPD	YEPD	RADG	SC	DOC	
+10 20%	+1.9	+90 2%	+168 1%	+37 1%	+88	+14	
CLAW	ANGLE	HS	MILK	CW	MARB	RE	FAT
+53	+43 25%	+62	+32 15%	+80 2%	+55	+1.11 3%	-0.050 2%
\$M	\$W	\$F	\$G	\$B	\$C		
+38	+77 10%	+125 2%	+60	+185 10%	+278 20%		

Consigned by: LongShot Farms, Jarod & Ashley Long
This super nice V A R Revelation son can be used on heifers or mature cows and is in the top 2% and 1% for WW and YW. If you are looking for a bull that will mature into a solid bull and add pounds to offspring, this bull will do it. He scored a perfect foot score and is very docile. Adjusted Ultrasound Data: %IMF 2.67, Ribeye 9.9, Rib Fat .10, Rump Fat .11

6 LSF SUMMATION 2121

08-29-2021 Bull *20220548 Tattoo: 2121

***K C F Bennett Summation**
19125179 *Thomas Patricia 9705

ANGUS
*Connealy Final Product

TLC Bonnie 3121
17842814 TLC Bonnie 068

SAXH: +158 15% SAXL: +161 10%

*K C F Bennett Consent Y75
*K C F Miss Protege W148
*S S Objective T510 0T26
*Thomas Patricia 71138
*Connealy Product 568
*Ebonista of Conanga 471
*H A Image Maker 0415
R & R Bonnie B25

CED	BEPD	WEPD	YEPD	RADG	SC	DOC	
+4	+2.4	+88 3%	+150 4%	+25	+92	+9	
CLAW	ANGLE	HS	MILK	CW	MARB	RE	FAT
+41 20%	+46	+46	+25	+70 10%	+82	+79 25%	+0.053
\$M	\$W	\$F	\$G	\$B	\$C		
+78 15%	+80 4%	+111 10%	+60	+171 15%	+300 10%		

Consigned by: LongShot Farms, Jarod & Ashley Long
This Summation son is in the Top 2% and 3% for WW and YW. Five out of six of his \$Values are in the top 15% or better. If you are looking for a bull that will mature into a solid bull and add pounds to offspring, this bull will do it. He scored a perfect foot score and is very docile. Adjusted Ultrasound Data: %IMF 3.78, Ribeye 10.2, Rib Fat .22, Rump Fat .21



K C F BENNETT SUMMATION - SIRE OF LOT 6



DEER VALLEY GROWTH FUND - SIRE OF LOTS 9-11

11 12 STAR GROWTH FUND 164 [MFP]

09-29-2021 Bull 20267178 Tattoo: 164

**Basin Payweight 1682	**Basin Payweight 0065		Adj IMF
21AR O Lass 7017			
**Deer Valley Growth Fund			
18827828 **Deer Valley Rita 36113	**Plattemere Weigh Up K360	BW	Adj RE
	+Deer Valley Rita 9457	65	
	*Ellingson Substance 1054	Adj WW	Adj Rib Fat
	12 Star Stampede A108		
	+12 Star Rossetta 992		
12 Star Rossetta 875		Adj YW	Adj Rmp Fat
19684480 12 Star Rosetta 449	*Ellingson Identity 9104		
	12 Star Rosetta Z20		

\$AXH: +76	\$AXJ: +61							
CED	BEPD	WEPD	YEPD	RADG	SC	DOC		
+6	+2.1	+77 15%	+143 10%	+1.30 15%	+1.89	+1.20		
CLAW	ANGLE	HS	MILK	CW	MARB	RE	FAT	
+1.48	+1.44	+1.67	+32 15%	+1.64 15%	+1.26	+1.43	+1.052	
\$M	\$W	\$F	\$G	\$B	\$C			
+78 15%	+70 20%	+108 10%	+29	+137	+256			

Consigned by: Pine Tree Ranch, Enyart Mitchell
Sired by Growth Fund with great production and a lot of maternal. Top 10% YW and \$F; 15% WW, Milk, CW, and \$M; 20% \$W.

9 LSF GROWTH FUND 1244

08-23-2021 Bull **20220555 Tattoo: 1244

**Basin Payweight 1682	**Basin Payweight 0065		Adj IMF
21AR O Lass 7017			1.92
**Deer Valley Growth Fund			
18827828 **Deer Valley Rita 36113	**Plattemere Weigh Up K360	BW	Adj RE
	+Deer Valley Rita 9457	70	11.8
ANGUS	**A A R Ten X 7008 S A	Adj WW	Adj Rib Fat
**Deer Valley All In	+Deer Valley Rita 0274	703	.10
+RWA All In W1344		Adj YW	Adj Rmp Fat
17957152 +G A R Bextor L58	#C R A Bextor 872 5205 608	855	.05
	G A R Retail Product 1484		

\$AXH: +138 25%	\$AXJ: +153 15%							
CED	BEPD	WEPD	YEPD	RADG	SC	DOC		
+5	+2.6	+80 10%	+150 4%	+32 10%	+1.22	+27 15%		
CLAW	ANGLE	HS	MILK	CW	MARB	RE	FAT	
+5.1	+5.1	+7.5	+37 3%	+65 15%	+6.9	+6.7	+0.050	
\$M	\$W	\$F	\$G	\$B	\$C			
+75 20%	+80 4%	+106 15%	+52	+158 25%	+280 20%			

Consigned by: LongShot Farms, Jarod & Ashley Long
This Growth Fund bull is in the top 10% and 3% for WW and YW. He comes from LongShot Farms' key donor cow that stems back to C R A Bextor bull and DV All In. The dam of this bull has flushed an average of 26 embryos and has major fertility power. He scored a perfect foot score and is very docile. Adjusted Ultrasound Data: %IMF 1.92, Ribeye 11.8, Rib Fat .10, Rump Fat .05

12 PINE TREE OPUS 2107

09-13-2021 Bull *20464866 Tattoo: 2107

*Gardens Cache	**A A R Ten X 7008 S A		Adj IMF
Green Garden Rita K078			
*Gardens Opus			
19112956 #Green Garden Emma P120	Gardens Project	BW	Adj RE
	Green Garden Emma I121	78	
ANGUS	**Plattemere Weigh Up K360	Adj WW	Adj Rib Fat
**SS Samson C4701	*SS Isabel Z720		
*HR Lady Ida 9124		Adj YW	Adj Rmp Fat
19526567 *HR Lady Ida 7535	#V A R Discovery 2240		
	Springfield Lady Ida 2159		

\$AXH: +184 5%	\$AXJ: +166 10%							
CED	BEPD	WEPD	YEPD	RADG	SC	DOC		
+6	+3.3	+77 15%	+140 10%	+3.1 10%	+7.0	+19		
CLAW	ANGLE	HS	MILK	CW	MARB	RE	FAT	
+5.1	+5.6	+4.5	+23	+62 20%	+1.42 2%	+7.7	+0.025	
\$M	\$W	\$F	\$G	\$B	\$C			
+63	+62	+106 15%	+90 2%	+196 3%	+317 3%			

Consigned by: Pine Tree Ranch, Enyart Mitchell
Gardens Opus son out of a Samson C4701 daughter. Great combination bull with outstanding carcass values. Top 2% Marb and \$G; top 3% \$B and \$C.

10 PINE TREE GROWTH FUND 2111

10-15-2021 Bull **20465032 Tattoo: 2111

**Basin Payweight 1682	**Basin Payweight 0065		Adj IMF
21AR O Lass 7017			
**Deer Valley Growth Fund			
18827828 **Deer Valley Rita 36113	**Plattemere Weigh Up K360	BW	Adj RE
	+Deer Valley Rita 9457	85	
ANGUS	**Basin Payweight 1682	Adj WW	Adj Rib Fat
**V A R Power Play 7018	+Sandpoint Blackbird 8809		
**Linz Emulota Play 614-9785		Adj YW	Adj Rmp Fat
19602302 **Balcoo Emulota 614	*Sitz Upward 307R		
	*JMB Emulota 013		

\$AXH: +123	\$AXJ: +106							
CED	BEPD	WEPD	YEPD	RADG	SC	DOC		
+4	+2.3	+96 1%	+167 1%	+29 20%	+9.8	+22		
CLAW	ANGLE	HS	MILK	CW	MARB	RE	FAT	
+5.4	+5.6	+1.04	+28	+85 1%	+7.0	+6.8	+0.035	
\$M	\$W	\$F	\$G	\$B	\$C			
+60	+87 1%	+125 2%	+54	+179 10%	+292 10%			

Consigned by: Pine Tree Ranch, Enyart Mitchell
Growth Fund son. Combination bull with great production and \$Value EPDs. Top 1% WW, YW, CW and \$W; top 2% \$F; top 10% \$B and \$C.

13 12 STAR CAVALRY 161 [DOP-MFP]

09-27-2021 Bull 20268257 Tattoo: 161

*Connealy Cavalry 1149	*Connealy Consensus		Adj IMF
+Brista of Conanga 927T			
**JVC Cavalry V3326			
17784803 +Brusett Forever W857	**TC Franklin 619	BW	Adj RE
	+Brusett Forever 827	54	
	*Ellingson Substance 1054	Adj WW	Adj Rib Fat
	12 Star Stampede A108		
	+12 Star Rossetta 992		
12 Star Queen 867		Adj YW	Adj Rmp Fat
19684470 7L Queen 1137	*S A V Iron Mountain 8066		
	+7-L N323 Queen R545		

\$AXH: +87	\$AXJ: +62							
CED	BEPD	WEPD	YEPD	RADG	SC	DOC		
+10 20%	+4	+70 25%	+119	+1.25	+1.87	+1.10		
CLAW	ANGLE	HS	MILK	CW	MARB	RE	FAT	
+1.54	+1.43 25%	+1.46	+23	+1.49	+1.39	+1.54	+1.009	
\$M	\$W	\$F	\$G	\$B	\$C			
+58	+62	+90	+40	+130	+227			

Consigned by: Pine Tree Ranch, Enyart Mitchell
Calving ease bull sired by Cavalry V3326 with a +10 CED & +13 CEM.

14 KAR PROPHET 102 1264 [MIF]

10-05-2021 Bull *20471782 Tattoo: J102

#C R A Bextor 872 5205 608		#B A R Ext Traveler 205		Adj IMF		
16295688 +G A R Objective 1885		Cra Lady Jaye 608 498 S Easy		2.37		
ANGUS SS		#S S Objective T510 0T26		BW		
+JMc Answer 0337 4807		G A R 1407 New Design 2232		65		
KAR Eileen 1264 of 0337		#S A V Final Answer 0035		Adj WW		
17691547 KAR Eileen 72 of 112		+Blackie of Conanga 285 985		639		
\$AxH: +33 \$AxJ: -12		#**Rito 112 of 2536 Rito 616		Adj Rib Fat		
		Lena Emily 1206		.22		
				Adj YW		
				1058		
				Adj Rmp Fat		
				.33		
CED	BEPD	WEPD	YEPD	RADG	SC	DOC
+16 1%	-.4 20%	+50	+78	+1.13	+1.61	+14
CLAW	ANGLE	HS	MILK	CW	MARB	RE
+39 15%	+33 2%	+31 15%	+28	+25	+1.80	+1.14
FAT						
+0.059						
\$M	\$W	\$F	\$G	\$B	\$C	
+79 15%	+65	+55	+50	+104	+214	

Consigned by: Kaberlein Angus Ranch, Mike Kaberlein
A solid, moderate-framed G A R Prophet son out of a cow that has produced 8 calves with Weaning and Yearling ratios of 103 and 102, respectively, with a 360 day calving interval. This bull should work for both cows and heifers and sire moderate, easy keeping females.



MW DNAMITE -
SIRE OF LOT 15

15 KAR DNAMITE 105 1383

09-27-2021 Bull *20471780 Tattoo: J105

#**WR Journey-1X74		*B/R Future Direction 4268		Adj IMF		
18511488 *Welytok Total 10 Erianna 3B2		2 Bar 5050 New Design 7831		1.90		
ANGUS SS		#A A R Ten X 7008 S A		BW		
**Connealy Consensus 7229		Quaker Hill Erianna 8T2		65		
**KAR Queen 1383 of 7229		#*Connealy Consensus		Adj WW		
17873353 +JMc Queen Mill 7432 4510		Blue Lilly of Conanga 16		791		
\$AxH: +153 15% \$AxJ: +156 15%		#*Connealy Onward		Adj Rib Fat		
		JMc Queen Mina 4510 3282		.17		
				Adj YW		
				1177		
				Adj Rmp Fat		
				.27		
CED	BEPD	WEPD	YEPD	RADG	SC	DOC
+13 10%	-.7 15%	+63	+121	+2.27	+1.06	+24 25%
CLAW	ANGLE	HS	MILK	CW	MARB	RE
+48	+42 20%	+47	+35 10%	+56	+1.10 10%	+0.63
FAT						
+0.028						
\$M	\$W	\$F	\$G	\$B	\$C	
+89 3%	+70 20%	+101 20%	+73 10%	+174 15%	+315 3%	

Consigned by: Kaberlein Angus Ranch, Mike Kaberlein
A really stout and balanced DNAMite son that ranks well above average for 15 pertinent traits. This bull excels for calving ease, growth, carcass, and maternal. Another AI bull from an ET 7229 daughter out of our Future Direction donor. No holes here!

16 KAR UPWARD 103 1539

09-25-2021 Bull *20484738 Tattoo: J103

#*Connealy Onward		#Connealy Lead On		Adj IMF		
14963730 *Sitz Henrietta Pride 81M		Altune of Conanga 6104		2.82		
ANGUS SS		#Sitz Value 7097		BW		
**Hoover Dam		Sitz Henrietta Pride 1370		62		
**KAR Queen 1539 HD 4510		#*SydGen C C & 7		Adj WW		
18605146 JMc Queen Mina 4510 3282		#Erica of Ellston CI24		742		
\$AxH: +93 \$AxJ: +55		#C A Future Direction 5321		Adj Rib Fat		
		Queen Mia of Conanga 5983		.23		
				Adj YW		
				1238		
				Adj Rmp Fat		
				.35		
CED	BEPD	WEPD	YEPD	RADG	SC	DOC
+8	+5	+63	+113	+24	+2.01 3%	+11
CLAW	ANGLE	HS	MILK	CW	MARB	RE
+50	+47	+70	+26	+50	+76	+51
FAT						
+0.021						
\$M	\$W	\$F	\$G	\$B	\$C	
+78 15%	+64	+92	+56	+148	+270 25%	

Consigned by: Kaberlein Angus Ranch, Mike Kaberlein
A really solid herd sire out of the legendary Sitz Upward. This bull has a royal pedigree, with performance and looks to match. His dam is an ET daughter of Hoover Dam and Queen Mina, a high-marbling, large-ribeye daughter of Future Direction.

17 KAR UPWARD 108 747

09-24-2021 Bull *20484732 Tattoo: J108

#*Connealy Onward		#Connealy Lead On		Adj IMF		
14963730 *Sitz Henrietta Pride 81M		Altune of Conanga 6104		2.40		
ANGUS SS		#Sitz Value 7097		BW		
**Coleman Charlo 0256		Sitz Henrietta Pride 1370		57		
**McKellar Briana Abigale 8012		#*O C C Paxton 730P		Adj WW		
19154814 **McKellar Brianna 4095		+Bohi Abigale 6014		711		
\$AxH: +1 \$AxJ: -11		#*Connealy In Focus 4925		Adj Rib Fat		
		+JMc Beretta 1334 W148		.26		
				Adj YW		
				1122		
				Adj Rmp Fat		
				.27		
CED	BEPD	WEPD	YEPD	RADG	SC	DOC
+8	+5	+61	+111	+23	+2.14 2%	+20
CLAW	ANGLE	HS	MILK	CW	MARB	RE
+46	+40 15%	+62	+42 1%	+51	+65	+37
FAT						
+0.068						
\$M	\$W	\$F	\$G	\$B	\$C	
+95 1%	+78 10%	+89	+45	+134	+269 25%	

Consigned by: Kaberlein Angus Ranch, Mike Kaberlein
A top-performing Sitz Upward son out of an ET Charlo daughter. He ratioed 98 for Birth and 105 for Weaning. He should be a really good bull for heifers or cows, and should moderate frame and add milk to his replacement heifers. Top 2% for Scrotal EPD.

18 ROSENEATH RESILIENT 118

09-08-2021 Bull 20395845 Tattoo: 118

*Sitz Stellar 726D	#*Mohnen Substantial 272	Adj IMF
*Sitz Resilient 10208	*SITZ Pride 200B	
19057457 *Sitz Miss Burgess 1856	#*Sitz Top Game 561X	BW Adj RE
ANGUS <small>ANGUS</small>	Sitz Miss Burgess 4381	83
#*Koupal Advance 28	#Koupal Juneau 797	Adj WW Adj Rib Fat
Roseneath Lass 429	*Koupal Ebonette 734	619
18149535 +Roseneath Lass 084	#*N Bar Emulation EXT	Adj YW Adj Rmp Fat
\$AXH: +30 \$AXJ: +39	Snells Lass 2007	

CED	BEPD	WEPD	YEPD	RADG	SC	DOC	
+9	+2.0	+88 3%	+151 4%	+27	+1.05	+17	
CLAW	ANGLE	HS	MILK	CW	MARB	RE	FAT
+38 10%	+47	+02 1%	+24	+60 25%	+65	+54	+013
\$M	\$W	\$F	\$G	\$B	\$C		
+77 15%	+77 10%	+94	+52	+146	+266		

Consigned by: Roseneath Plantation, David B Means III
118 is a stout, muscular son of the popular Sitz Resilient and out of one of our top cows, whose first daughter achieved Pathfinder status. High growth in his calling card with WW and YW EPDs in the top 3% and 4%, respectively. His \$W value places him in the top 10% of the breed.



SITZ RESILIENT 10208 - SIRE OF LOT 18



G A R HOME TOWN - SIRE OF LOTS 19 & 20

19 SCF HOMETOWN 8070 2134

08-29-2021 Bull *20461659 Tattoo: 2134

*G A R Ashland	*G A R Early Bird	Adj IMF
*G A R Home Town	*Chair Rock Ambush 1018	
19266718 **Chair Rock Sure Fire 6095	#*G A R Sure Fire	BW Adj RE
HDSOK	*Chair Rock Progress 3005	Adj WW Adj Rib Fat
#*Basin Payweight 1682	#*Basin Payweight 0065	Adj YW Adj Rmp Fat
**Dixie Rita 8070	21AR O Lass 7017	
19485132 **SJH Upshot of 6108 3499	#*EXAR Upshot 0562B	
\$AXH: +216 1% \$AXJ: +204 2%	#DRMCTR III Rita 6108	

CED	BEPD	WEPD	YEPD	RADG	SC	DOC	
+5	+3.6	+68	+131 20%	+32 10%	+1.40 20%	+26 15%	
CLAW	ANGLE	HS	MILK	CW	MARB	RE	FAT
+58	+51	+49	+31 20%	+66 15%	+1.35 3%	+98 10%	-.043 3%
\$M	\$W	\$F	\$G	\$B	\$C		
+59	+60	+120 3%	+95 2%	+215 1%	+338 1%		

Consigned by: Schexnayder Cattle Farm, Dale Schexnayder
Super thick, super nice young son of G A R Home Town. Great EPDs and appealing to the eyes. Combination bull with growth carcass and maternal. Top 1% \$B and \$C; top 2% \$G; top 3% Marb.

21 FULPER FIREBALL J41

10-29-2021 Bull *20405858 Tattoo: J41

*G A R Sure Fire 6404	#*G A R Sure Fire	Adj IMF
*GB Fireball 672	*G A R Complete N281	
18690054 *GB Anticipation 432	*G A R Anticipation	BW Adj RE
ANGUS <small>ANGUS</small>	GB Ambush 269	Adj WW Adj Rib Fat
#BUBS Southern Charm AA31	*Silveiras Conversion 8064	Adj YW Adj Rmp Fat
Fulper Charm 239	*Hickory Hill Erica 009	
19989653 Hillside 4037 1613	#*B/R New Day 454	
\$AXH: +210 2% \$AXJ: +182 4%	*G A R Expectation S 4037	

CED	BEPD	WEPD	YEPD	RADG	SC	DOC	
+14 4%	+4	+46	+87	+25	+53	+17	
CLAW	ANGLE	HS	MILK	CW	MARB	RE	FAT
+38 10%	+43 25%	+10 2%	+31 20%	+41	+1.47 2%	+1.31 1%	-.006 25%
\$M	\$W	\$F	\$G	\$B	\$C		
+80 10%	+53	+95	+102 1%	+198 3%	+337 1%		

Consigned by: Fulper Angus Ranch, Chris Fulper
Calving ease Fireball son with maternal and outstanding carcass EPDs. Top 1% RE, \$G, and \$C; top 2% Marb; top 3% \$B.

20 AK HOMETOWN 2190

09-07-2021 Bull *20462968 Tattoo: 2190

*G A R Ashland	*G A R Early Bird	Adj IMF
*G A R Home Town	*Chair Rock Ambush 1018	
19266718 **Chair Rock Sure Fire 6095	#*G A R Sure Fire	BW Adj RE
ANGUS <small>ANGUS</small>	*Chair Rock Progress 3005	Adj WW Adj Rib Fat
#*G A R Sure Fire	#*Connealy In Sure 8524	Adj YW Adj Rmp Fat
**Legacy Sure Fire C80 L298	*Chair Rock 5050 G A R 8086	
19474608 *G A R Daybreak C80	#MCC Daybreak	
\$AXH: +243 1% \$AXJ: +251 1%	*G A R Objective 277L	

CED	BEPD	WEPD	YEPD	RADG	SC	DOC	
+10 20%	+2.1	+92 1%	+162 1%	+36 1%	+59	+33 2%	
CLAW	ANGLE	HS	MILK	CW	MARB	RE	FAT
+70	+49	+06 1%	+18	+77 3%	+1.31 4%	+1.12 3%	-.021 15%
\$M	\$W	\$F	\$G	\$B	\$C		
+68	+74 10%	+129 1%	+93 2%	+223 1%	+357 1%		

Consigned by: A&K Farm, Kyle Baker
Nice Home Town son with a lot of growth. Long-body bull. Weaning weight at 852 is one of the heaviest Weaning Weight bulls we have raised on our farm. Dam and sire stem back to the GAR program.

22 FULPER COMMODORE J31

10-22-2021 Bull *20426985 Tattoo: J31

#*Connealy Comrade 1385	#*Connealy Consensus 7229	Adj IMF
*Kesslers Commodore 6516	Happy Gee of Conanga 919	
18545936 Kesslers Rainbow 0595	#*Summitcrest Complete 1P55	BW Adj RE
ANGUS <small>ANGUS</small>	Kesslers Rainbow 3043	Adj WW Adj Rib Fat
#*Bar R Jet Black 5063	#*Connealy Black Granite	Adj YW Adj Rmp Fat
*Fulper Burgess 229	Bar R Iris Anita 0113	
19990364 Fulper Burgess 227	#*Quaker Hill Rampage 0A36	
\$AXH: +133 25% \$AXJ: +145 15%	Fulper Burgess 144	

CED	BEPD	WEPD	YEPD	RADG	SC	DOC	
+11 15%	+1.25%	+98 1%	+181 1%	+35 2%	+2.11 2%	+31 4%	
CLAW	ANGLE	HS	MILK	CW	MARB	RE	FAT
+62	+55	+77	+37 3%	+90 1%	+78	+85 20%	+009
\$M	\$W	\$F	\$G	\$B	\$C		
+86 4%	+99 1%	+130 1%	+62 25%	+193 4%	+336 1%		

Consigned by: Fulper Angus Ranch, Chris Fulper
This Commodore son out of a Jet Black daughter is a calving ease bull with an outstanding combination of growth carcass and maternal, and 16 EPDs in the top 10% of the breed. Top 1% WW, YW, CW, \$W, \$F, and \$C; top 2% RADG; top 4% \$B.

23 FULPER PROFILE J33

10-12-2021 Bull *20405879 Tattoo: J33



***Sitz Profile 1160**
18385986 *SITZ Blackbird 334

ANGUS
#*Connealy Confidence Plus

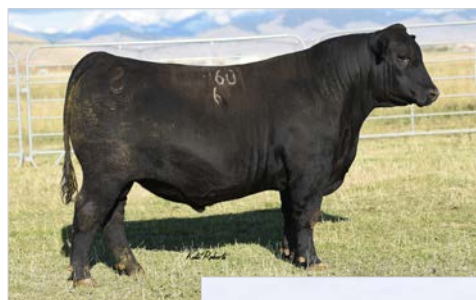
***HF Rita 0010**
19793493 *MVR Rita E026

SAXH +138 25% **SAXJ** +99

#*Mohnen Substantial 272
#*Benfield Substance 8506
Mohnen Glyn Mawr Elba 1758
#*Connealy Final Product
#SITZ Blackbird 532
#*Connealy Confidence 0100
Elbanna of Conanga 1209
#*Basin Payweight 1682
*G A R 5050 New Design A039

CEW	BEPD	WEPD	YEYD	RADG	SC	DOC	
+5	+1.3	+64	+126 25%	+33 4%	+1.41 20%	+26 15%	
CLAW	ANGLE	HS	MILK	CW	MARB	RE	FAT
+40 15%	+51	+38 25%	+30 25%	+58 25%	+86 25%	+75	+0.48
\$M	\$W	\$F	\$G	\$B	\$C		
+90 2%	+65	+113 10%	+62 25%	+174 15%	+316 3%		

Consigned by: Fulper Angus Ranch, Chris Fulper
J33 is a thick-made, easy-keeping Sitz Profile son with great maternal and carcass values. Top 2% \$M; top 3% \$C, top 10% \$F; and top 15% \$B.



SITZ PROFILE 1160 -
SIRE OF LOT 23



BAR R JET BLACK 5063 -
SIRE OF LOT 24

24 FULPER JET BLACK J42

10-22-2021 Bull 20405862 Tattoo: J42



***Bar R Jet Black 5063**
18389838 Bar R Iris Anita 0113

ANGUS
#*S S Objective T510 0T26

***Highland Blackbird Z4**
17619046 Monarch Blackbird R730

SAXH +139 25% **SAXJ** +105

#*Connealy Black Granite
#*Connealy Consensus 7229
#Eura Elga of Conanga 9109
#*Sitz Upward 307R
Bar R Anita 7081
#S S Traveler 6807 T510
S S Miss Rita R011 7R8
#C A Future Direction 5321
*ACF Blackbird 3056

CEW	BEPD	WEPD	YEYD	RADG	SC	DOC	
+7	+2.9	+84 5%	+144 10%	+29 20%	+1.41 20%	+25 20%	
CLAW	ANGLE	HS	MILK	CW	MARB	RE	FAT
+53	+52	+54	+29	+70 10%	+1.06 15%	+49	+0.40
\$M	\$W	\$F	\$G	\$B	\$C		
+61	+76 10%	+111 10%	+68 15%	+179 10%	+293 10%		

Consigned by: Fulper Angus Ranch, Chris Fulper
This Jet Black son is a surefire combination bull with great production, maternal, and carcass EPDs. Top 5% WW; top 10% YW, CW, \$W, \$F, \$B, and \$C; and top 15% MARB.

26 FULPER BROADVIEW J35

11-07-2021 Bull 20404428 Tattoo: J35



***Heiken Broadview**
19421003 #*JCH BHA Karen 7815

ANGUS
#*B/R New Day 454

Hillside 4037 1613
17829372 +G A R Expectation S 4037

SAXH +123 **SAXJ** +106

#*Connealy Spur
Vermilion Lass 4071
#*SITZ Logo 12964
JCH Karen 5130
#*Boyd New Day 8005
B/R Ruby 1224
#*G A R Expectation 4915
+G A R Precision 2488

CEW	BEPD	WEPD	YEYD	RADG	SC	DOC	
+3	+1.3	+72 20%	+126 25%	+26	+85	+17	
CLAW	ANGLE	HS	MILK	CW	MARB	RE	FAT
+55	+45	+99	+26	+60 25%	+90 25%	+96 10%	+0.09
\$M	\$W	\$F	\$G	\$B	\$C		
+73 25%	+68 25%	+102 20%	+70 15%	+172 15%	+296 10%		

Consigned by: Fulper Angus Ranch, Chris Fulper
Broadview son with tremendous growth and balanced maternal and carcass, making a great combination bull. Top 10% RE and \$C; top 15% \$G and \$B; top 20% \$F.

25 FULPER DRY VALLEY J24

09-10-2021 Bull *20407146 Tattoo: J24



***Connealy Dry Valley**
18533906 Becca of Conanga 1617

ANGUS
#*WR Journey-1X74

Highland Elga E44
18874073 +AC Elga U64 of FD L706

SAXH +63 **SAXJ** +52

#*Hoover No Doubt
#*Mogck Bullseye
#Miss Blackcap Ellston J2
#*Summitcrest Complete 1P55
+Brisha of Conanga 746 1237
#*B/R Future Direction 4268
2 Bar 5050 New Design 7831
#C A Future Direction 5321
Stevenson Elga L706

CEW	BEPD	WEPD	YEYD	RADG	SC	DOC	
-5	+5.2	+69	+124 25%	+26	+1.41 20%	+17	
CLAW	ANGLE	HS	MILK	CW	MARB	RE	FAT
+43 25%	+43 25%	+54	+33 15%	+55	+67	+50	+0.40
\$M	\$W	\$F	\$G	\$B	\$C		
+83 10%	+63	+96	+50	+145	+271 25%		

Consigned by: Fulper Angus Ranch, Chris Fulper
Dry Valley son out of a Journey daughter. Growth bull with maternal. Top 10% \$M; top 15% Milk.

27 FULPER RAMESES J38

11-10-2021 Bull *20404429 Tattoo: J38



***Springfield Ramesses 6124**
18746724 *Welytok Total 10 Erianna 3B2

ANGUS
#*Rito 9M25 of Rita 5F56 Pred

Crazy K Ruby of Tiffany 3128
17530554 +44 Ruby of Tiffany 0X26

SAXH +207 2% **SAXJ** +214 1%

#*Quaker Hill Rampage 0A36
#MCC Daybreak
#*QHF Blackcap 6E2 of 4V16 4355
#*A A R Ten X 7008 S A
Quaker Hill Erianna 8T2
#*G A R Predestined
#*Rita 5F56 of 1198 FD
#*Mytty In Focus
+B/R Ruby of Tiffany 8250

CEW	BEPD	WEPD	YEYD	RADG	SC	DOC	
+7	+7	+79 10%	+146 10%	+32 10%	+1.56 15%	+25 20%	
CLAW	ANGLE	HS	MILK	CW	MARB	RE	FAT
+49	+35 4%	+73	+35 10%	+80 2%	+99 15%	+1.05 5%	-.021 15%
\$M	\$W	\$F	\$G	\$B	\$C		
+62	+79 5%	+127 2%	+77 10%	+205 2%	+328 2%		

Consigned by: Fulper Angus Ranch, Chris Fulper
Take a look at this outstanding combination Ramesses son that brings together production, maternal, carcass, and \$Values, with 12 EPDs in the top 5% of the breed.

28 FULPER COMMAND J40

09-25-2021 Bull *20405880 Tattoo: J40

*EF Commando 1366		*EF Complement 8088		Adj IMF			
*Baldridge Command C036		Riverbend Young Lucy W1470		Adj RE			
18219911	Baldridge Blackbird A030	*Hoover Dam		BW	Adj RE		
ANGUS <small>POWERED BY ANGUS GENETICS</small>		Baldridge Blackbird X89		Adj WW			
*BUBS Southern Charm AA31		*Silveiras Conversion 8064		Adj Rib Fat			
Fulper Lady 199		*Hickory Hill Erica 009		Adj YW			
19989670	Double Z Lady 4903	*GDAR SVF Traveler 234D		Adj Rmp Fat			
ZZ Fly Traveler Lady 903							
\$AXH: +120	\$AXJ: +114						
CED	BEPD	WEPD	YEPD	RADG	SC	DOC	
+8	+1.0	+70 25%	+111	+22	+68	+10	
CLAW	ANGLE	HS	MILK	CW	MARB	RE	FAT
+50	+57	+51	+33 15%	+43	+67	+63	+007
\$M	\$W	\$F	\$G	\$B	\$C		
+58	+78 10%	+80	+54	+135	+233		

Consigned by: Fulper Angus Ranch, Chris Fulper
Sired by Baldridge Command and out of a Southern Charm daughter with great maternal. Top 10% \$W; top 15% Milk.

31 BF BLACK MAGIC 2104

09-09-2021 Bull 20416244 Tattoo: 2104

*Silveiras Conversion 8064		*BT Crossover 758N		Adj IMF			
*Byergo Black Magic 3348		+EXC Saras Dream S609 R3		Adj RE			
17803074	*Byergo Elia Cupcake 5900	Byergo Picasso		BW	Adj RE		
ANGUS <small>POWERED BY ANGUS GENETICS</small>		+Byergo Miss Cupcake 3600		Adj WW			
*S A V Harvester 0338		*S A V Heritage 6295		Adj Rib Fat			
S A V Queen 5113		*S A V Emblynette 7749		Adj YW			
18141851	S A V Queen 1305	*S A V Brand Name 9115		Adj Rmp Fat			
S A V Queen 7404							
\$AXH: -13	\$AXJ: +8						
CED	BEPD	WEPD	YEPD	RADG	SC	DOC	
+2	+5.4	+75 15%	+136 15%	+30 15%	+1.97 4%	+12	
CLAW	ANGLE	HS	MILK	CW	MARB	RE	FAT
+46	+52	+65	+28	+59 25%	+36	+44	+009
\$M	\$W	\$F	\$G	\$B	\$C		
+56	+57	+105 15%	+37	+142	+240		

Consigned by: Baker Farms, Donald Baker
The combination genetics of this breeding has created a powerfully-framed Black Magic son that is as gentle and docile as can be. If you are looking for pounds or power, check out this bull.

29 BF SUMMATION 2194

09-21-2021 Bull *20420842 Tattoo: 2194

*K C F Bennett Consent Y75		*Connealy Consensus		Adj IMF			
*K C F Bennett Summation		+K C F Miss Protege W148		Adj RE			
19125179	*Thomas Patricia 9705	*S S Objective T510 0T26		BW	Adj RE		
ANGUS <small>POWERED BY ANGUS GENETICS</small>		+Thomas Patricia 71138		Adj WW			
*Bar R Jet Black 5063		*Connealy Black Granite		Adj Rib Fat			
*Faith Rita 9052		Bar R Iris Anita 0113		Adj YW			
19773230	**Woodside Rita 6D87 of A116	*V A R Discovery 2240		Adj Rmp Fat			
*CoX 27R A116							
\$AXH: +181 5%	\$AXJ: +203 2%						
CED	BEPD	WEPD	YEPD	RADG	SC	DOC	
+3	+3.7	+107 1%	+182 1%	+33 4%	+1.35 25%	+16	
CLAW	ANGLE	HS	MILK	CW	MARB	RE	FAT
+58	+40 15%	+63	+33 15%	+94 1%	+59	+88 15%	+029
\$M	\$W	\$F	\$G	\$B	\$C		
+54	+93 1%	+134 1%	+52	+187 5%	+297 10%		

Consigned by: Baker Farms, Donald Baker
This Summation son has 16 EPDs listed in the top 20%. This heifer bull is top 1% in WW & YW EPDs and will be able to put pounds on his offspring. His carcass traits are great as well for those wanting to maintain ownership at the feedlots. This bull would make a great addition to any type of farm.



BYERGO BLACK MAGIC 3348 - SIRE OF LOT 31



HA COWBOY UP 5405 - SIRE OF LOT 32

30 BF REVELATION 2191

09-11-2021 Bull *20417318 Tattoo: 2191

*Quaker Hill Rampage 0A36		*MCC Daybreak		Adj IMF			
*V A R Revelation 6299		*QHf Blackcap 6E2 of 4V16 4355		Adj RE			
18432146	**Sandpoint Blackbird 8809	*Connealy Onward		BW	Adj RE		
ANGUS <small>POWERED BY ANGUS GENETICS</small>		+Riverbend Blackbird 4301		Adj WW			
*Byergo Black Magic 3348		*Silveiras Conversion 8064		Adj Rib Fat			
DIAMOND 929 of 5E9 B MAGIC		*Byergo Elia Cupcake 5900		Adj YW			
19731616	+Diamond 5E9 of 3902	*Rito 12E7 of 5F56 Rito 5M2		Adj Rmp Fat			
*Diamond 3902 0010 9M25							
\$AXH: +152 15%	\$AXJ: +209 2%						
CED	BEPD	WEPD	YEPD	RADG	SC	DOC	
+2	+4.8	+94 1%	+163 1%	+33 4%	+94	+15	
CLAW	ANGLE	HS	MILK	CW	MARB	RE	FAT
+42 20%	+30 1%	+69	+27	+84 1%	+56	+1.42 1%	-.034 5%
\$M	\$W	\$F	\$G	\$B	\$C		
+53	+69 20%	+129 1%	+63 25%	+193 4%	+303 10%		

Consigned by: Baker Farms, Donald Baker
If you are looking to add pounds to your cattle, look closely at this V A R Revelation son. The combination of Revelation and Black Magic places this bull's WW and YW in the top 1%. This bull also carries 14 EPDs in the top 20% of the breed. Great potential with this bull's genetics.

32 BF COWBOY UP 2103

08-29-2021 Bull 20422056 Tattoo: 2103

*HA Outside 3008		*KC Solution 0018		Adj IMF			
*HA Cowboy Up 5405		*HA Ever Lady 1575		Adj RE			
18286467	*HA Blackcap Lady 1602	*Sitz Upward 307R		BW	Adj RE		
ANGUS <small>POWERED BY ANGUS GENETICS</small>		HA Blackcap Lady 5515		Adj WW			
*S A V Registry 2831		+Rito 707 of Ideal 3407 7075		Adj Rib Fat			
S A V Emblynette 5429		S A V Madame Pride 0075		Adj YW			
18164455	+S A V Emblynette 3623	*S A V 707 Rito 9969		Adj Rmp Fat			
*S A V Emblynette 7415							
\$AXH: +33	\$AXJ: +7						
CED	BEPD	WEPD	YEPD	RADG	SC	DOC	
+7	+2.2	+77 15%	+125 25%	+24	+1.27 25%	+17	
CLAW	ANGLE	HS	MILK	CW	MARB	RE	FAT
+39 15%	+47	+1.01	+15	+50	+08	+37	-.024 10%
\$M	\$W	\$F	\$G	\$B	\$C		
+52	+62	+87	+26	+113	+199		

Consigned by: Baker Farms, Donald Baker
Thick top, heavy-muscled Cowboy Up son with great growth. Top 15% WW; top 25% YW.



SYDGEN TRUST 6228 - SIRE OF LOTS 33-35

35 DARNALL PLACE TRUST 119

11-23-2021	Bull 20401580	Tattoo: 119					
*SCR Promise 4042		#C A Future Direction 5321		Adj IMF			
**SydGen Trust 6228		SCR Queen 2167					
15354674	+SydGen Forever Lady 4413	#Bon View New Design 1407	BW	Adj RE			
ANGUS <small>ANGUS</small>		+S A F Forever Lady 0182	68				
*A A R Ten X 7008 S A		#*Mytty In Focus	Adj WW	Adj Rib Fat			
Darnall Place Queen 435		#A A R Lady Kelton 5551	633				
18184807	Darnall Place Queen 839	#*Mytty In Focus	Adj YW	Adj Rmp Fat			
\$AxH: +107	\$AxJ: +120	Darnall Place Queen 2318					
CED	BEPD	WEPD	YEPD	RADG	SC	DOC	
+10 20%	-.5 15%	+62	+112	+25	+1.29 25%	+24 25%	
CLAW	ANGLE	HS	MILK	CW	MARB	RE	FAT
+55	+55	+40 25%	+31 20%	+51	+50	+61	+0.11
\$M	\$W	\$F	\$G	\$B	\$C		
+61	+63	+94	+46	+140	+243		

Consigned by: Darnall Place Farm, Carroll Boudreaux
Calving ease Trust son out of a Ten X daughter.

33 DARNALL PLACE TRUST 103

08-23-2021	Bull 20401581	Tattoo: 103					
*SCR Promise 4042		#C A Future Direction 5321		Adj IMF			
**SydGen Trust 6228		SCR Queen 2167					
15354674	+SydGen Forever Lady 4413	#Bon View New Design 1407	BW	Adj RE			
ANGUS <small>ANGUS</small>		+S A F Forever Lady 0182	70				
**WR Journey-1X74		*B/R Future Direction 4268	Adj WW	Adj Rib Fat			
D O Black Gold 6j13		2 Bar 5050 New Design 7831	587				
18849360	Darnall Place Black Gold 9A1	Darnall Place Traveler 6L26	Adj YW	Adj Rmp Fat			
\$AxH: +121	\$AxJ: +105	Darnall Place Black Gold 6J8	901				
CED	BEPD	WEPD	YEPD	RADG	SC	DOC	
+9	+6	+54	+103	+27	+50	+17	
CLAW	ANGLE	HS	MILK	CW	MARB	RE	FAT
+58	+61	+63	+24	+39	+92 20%	+68	-.012 20%
\$M	\$W	\$F	\$G	\$B	\$C		
+36	+46	+90	+68 15%	+159 25%	+242		

Consigned by: Darnall Place Farm, Carroll Boudreaux
Moderated calving ease Trust son with carcass values. Top 15% \$G; top 20% Marb.

36 DARNALL PLACE TRUST 109

09-16-2021	Bull 20401591	Tattoo: 109					
*SCR Promise 4042		#C A Future Direction 5321		Adj IMF			
**SydGen Trust 6228		SCR Queen 2167					
15354674	+SydGen Forever Lady 4413	#Bon View New Design 1407	BW	Adj RE			
ANGUS <small>ANGUS</small>		+S A F Forever Lady 0182	66				
Darnall Place 10X 4K8		#A A R Ten X 7008 S A	Adj WW	Adj Rib Fat			
Darnall Place Elluna 7A2		Darnall Place Queen 7K17	606				
18846950	Darnall Place Elluna 4L10	#A A R Ten X 7008 S A	Adj YW	Adj Rmp Fat			
\$AxH: +93	\$AxJ: +66	Darnall Place Elluna 2K21	976				
CED	BEPD	WEPD	YEPD	RADG	SC	DOC	
+6	+1.3	+67	+115	+27	+84	+21	
CLAW	ANGLE	HS	MILK	CW	MARB	RE	FAT
+60	+50	+64	+32 15%	+47	+60	+50	+0.002
\$M	\$W	\$F	\$G	\$B	\$C		
+48	+69 20%	+87	+50	+136	+224		

Consigned by: Darnall Place Farm, Carroll Boudreaux
SydGen Trust son with moderate calving ease, growth, and balanced EPDs.

34 DARNALL PLACE TRUST 114

09-28-2021	Bull 20401582	Tattoo: 114					
*SCR Promise 4042		#C A Future Direction 5321		Adj IMF			
**SydGen Trust 6228		SCR Queen 2167					
15354674	+SydGen Forever Lady 4413	#Bon View New Design 1407	BW	Adj RE			
ANGUS <small>ANGUS</small>		+S A F Forever Lady 0182	68				
**PVF Insight 0129		#S A V Brilliance 8077	Adj WW	Adj Rib Fat			
Darnall Place Elluna 8J5		+PVF Missie 790	728				
19483562	Darnall Place Elluna 3J11	#SydGen Trust 6228	Adj YW	Adj Rmp Fat			
\$AxH: +116	\$AxJ: +115	Darnall Place Elluna 2K21	1032				
CED	BEPD	WEPD	YEPD	RADG	SC	DOC	
+1	+2.3	+61	+103	+24	+56	+26 15%	
CLAW	ANGLE	HS	MILK	CW	MARB	RE	FAT
+53	+57	+69	+34 10%	+56	+35	+99 10%	+0.04
\$M	\$W	\$F	\$G	\$B	\$C		
+61	+64	+105 15%	+44	+149	+254		

Consigned by: Darnall Place Farm, Carroll Boudreaux
Trust son out of an Insight daughter with outstanding growth. 728 Adj WW. Top 10% Milk.

HOW TO PARTICIPATE ON

LiveAuctions.TV

- 1 CREATE AN ACCOUNT**
Click "Register to Bid" on the top right corner of LiveAuctions.tv. Fill out the required information to bid online. Agree to the terms of service and finish with the "register" button.
- 2 REGISTER FOR A BUYER NUMBER**
From the home page or the "all auctions" page, choose the sale you're interested in. Once selected, click the "request a buyer number" button. Verify your email address with the email verification link. To verify your mobile number, click "send token". Follow the steps to authorize your mobile device and click "submit".
- 3 BID SUCCESSFULLY**
You will only have to complete the two-step verification process one time. After that, you will be able to immediately request a buyer number on any auction without verification. If you're a winning bidder, your lots will appear in your cart on the bottom of your screen. You will be contacted by the ranch or sale manager for your payment and shipping plans.

IF YOU NEED HELP REGISTERING TO BID OR TO VIEW THE AUCTION PLEASE CONTACT TECHNICAL SUPPORT

(682) 816-4900

OR

TECHSUPPORT@LIVEAUCTIONS.TV.



MILL BAR HICKOK 7242 -
SIRE OF LOTS 37 & 38

37 DARNALL PLACE HICKOK 113 [DDP]

09-28-2021 Bull 20401574 Tattoo: 113

#*Connealy Consensus 7229		#*Connealy Consensus		Adj IMF	
#*Mill Bar Hickok 7242		Blue Lilly of Conanga 16		Adj RE	
17351674	Mill Bar Bemindful Maid 6304	#*S A V Final Answer 0035	BW	70	
ANGUS <small>Quality Verified</small>		Mill Bar Lady DI 3400	Adj WW	Adj Rib Fat	
#*C A R New Design 5050		#B/R New Design 036	793		
Darnall Place Blackcap 2K10		G A R Precision 706	Adj YW	Adj Rmp Fat	
17803283	Darnall Place Blackcap 1114	#*V D A R Lucys Boy	1071		
Nichols Blackcap F139					
\$AxH: -43	\$AxL: -26				
CED	BEPD	WEPD	YEPD	RADG	SC
+4	+1.2	+67	+124 25%	+26	+1.21
CLAW		ANGLE	HS	MILK	CW
+64		+64	+39 25%	+32 15%	+47
SM		SW	SF	SG	SB
+53		+67 25%	+82	+43	+124
DOC		+30 5%			
RE		+45			
FAT		+0.27			

Consigned by: Darnall Place Farm, Carroll Boudreaux
Hickok son out of a New Design daughter with outstanding growth. Look at his spread - 70 pound Birth Weight and almost 800 pound Adjusted Weaning Weight.

38 DARNALL PLACE HICKOK 117

11-11-2021 Bull 20401586 Tattoo: 117

#*Connealy Consensus 7229		#*Connealy Consensus		Adj IMF	
#*Mill Bar Hickok 7242		Blue Lilly of Conanga 16		Adj RE	
17351674	Mill Bar Bemindful Maid 6304	#*S A V Final Answer 0035	BW	66	
ANGUS <small>Quality Verified</small>		Mill Bar Lady DI 3400	Adj WW	Adj Rib Fat	
#*A A R Ten X 7008 S A		#*Mytty In Focus	661		
Darnall Place Lady Ida 4L7		#A A R Lady Kelton 5551	Adj YW	Adj Rmp Fat	
18184785	Darnall Place Lady Ida 1A1	Darnall Place New Day 7L20	1071		
Darnall Place Lady Ida 4J18					
\$AxH: +114	\$AxL: +83				
CED	BEPD	WEPD	YEPD	RADG	SC
+11 15%	+1.6	+67	+113	+24	+1.34 25%
CLAW		ANGLE	HS	MILK	CW
+54		+43 25%	+39 25%	+27	+42
SM		SW	SF	SG	SB
+73 25%		+66 25%	+80	+54	+134
DOC		+21			
RE		+51			
FAT		+0.12			

Consigned by: Darnall Place Farm, Carroll Boudreaux
Calving ease Hickok son out of a Ten X daughter. +11 CED & +10 CEM.



Dollar value indexes, or \$Values, are a tool used to select for several traits at once based on a specific breeding objective. An economic index approach takes into account genetic and economic values as well as the relationships between traits to select for profit.

American Angus Association \$Value Indexes

Maternal Weaned Calf Value (\$M), an index expressed in dollars per head, predicts profitability differences in progeny due to genetics from conception to weaning. \$M is built off of a self-replacing herd model where commercial cattlemen replace 25% of their breeding females in the first generation and 20% in subsequent generations. Remaining cull females and all male progeny are sold as feeder calves. Increased selection pressure on \$M aims to decrease overall mature cow size and improve foot structure and fertility while maintaining weaning weights consistent with today's production.

Weaned Calf Value (\$W), an index expressed in dollars per head, provides the expected difference in future progeny preweaning performance from birth to weaning. \$W assumes that producers retain 20% of their female progeny for replacements and sell the rest of their cull female and male progeny as feeder calves. Over time, increased selection pressure on \$W will increase weaning and maternal milk traits while also continuing to increase mature cow size.

Feedlot Value (\$F), an index expressed in dollars per head, is the expected average difference in future progeny performance for postweaning merit compared to progeny of other sires. The underlying objective assumes commercial producers will retain ownership of cattle through the feedlot phase and sell fed cattle on a carcass weight basis with no considerations of premiums or discounts for quality and yield grade.

Grid Value (\$G), an index expressed in dollars per carcass, is the expected average difference in future progeny performance for carcass grid merit, including quality and yield grade attributes, compared to progeny of other sires.

Beef Value (\$B), an index expressed in dollars per carcass, facilitates simultaneous multi-trait genetic selection for feedlot and carcass merit. \$B represents the expected average differences in the progeny post-weaning performance and carcass value compared to progeny of other sires. This index assumes commercial producers wean all male and female progeny, retain ownership of these animals through the feedlot phase and market these animals on a quality-based carcass grid.

Combined Value (\$C), an index expressed in dollars per head, includes all traits that make up both \$M and \$B with the objective that commercial producers will replace 20% of their breeding females per year with replacement heifers retained within their own herd. The remaining cull heifer and steer progeny are then assumed to be sent to the feedlot where the producers retain ownership of those cattle and eventually sell them on a quality-based carcass merit grid.

EPDS DIRECTLY INCORPORATED INTO EACH \$VALUE

TRAIT	MATERNAL		TERMINAL			
	\$M	\$W	\$F	\$G	\$B	\$C
CED	✓					✓
BW		✓				✓
WW	✓	✓				✓
YW			✓		✓	✓
CEM	✓					✓
Milk	✓	✓				✓
MW	✓	✓				✓
DOC	✓					✓
HP	✓					✓
Claw	✓					✓
Angle	✓					✓
DMI			✓		✓	✓
CW			✓	✓	✓	✓
RE			✓	✓	✓	✓
Marb			✓	✓	✓	✓
Fat			✓	✓	✓	✓



Driving the science of better breeding

There's little room for error in the cattle business. Producers need the most advanced information to make smart selection decisions, and Angus Genetics Inc. (AGI) provides it through genomic-enhanced expected progeny differences (GE-EPDs). EPDs that traditionally contained all pedigree, performance and progeny information now also include results from available genomic, or DNA, tests. Breeders who use genomic technology give buyers access to AGI-generated GE-EPDs that provide:

- Increased predictability and decreased risk for young and unproven animals due to enhanced accuracy of EPDs
- Better characterization of genetics for difficult-to-measure performance traits (such as carcass traits, maternal traits and feed efficiency)
- The ability to make more rapid progress for traits that are important to you, due to:
 - more accurate selection
 - easier identification of genetic outliers
 - the ability to propagate young animals with confidence earlier in their lives

In fact, GE-EPDs on unproven animals have the same amount of accuracy as if they had recorded 8-33 calves, depending on the trait. That's valuable insight, offered regularly through the breed's weekly national cattle evaluation at www.angus.org.

How do you know if EPDs are genomic-enhanced?

Ask your breeder, refer to the registration paper, or look for the AGI GE-EPD logo, Angus GS™ powered by partner Neogen GeneSeek or the HD50k or i50k by partner Zoetis.



ABOVE AVERAGE GOALS REQUIRE TARGETED BULLS

Aim High

The Targeting the Brand™ logo highlights registered Angus bulls with greater genetic potential to produce calves that meet the most challenging specifications of the *Certified Angus Beef®* brand.

Only 1 in 4 non-parent Angus bulls qualify.

Minimum Genetic Requirements

Marbling EPD (Marb)	+0.65
Dollar Grid Carcass Index (\$G)	+55.0



For more information on Targeting the Brand™ visit CABcattle.com.



GB FIREBALL 672 - SIRE OF LOT 39



BAR R JET BLACK 5063 - SIRE OF LOT 40

39 JBBF FIREBALL 0116

11-13-2020 Bull **20061061 Tattoo: 0116



*G A R Sure Fire 6404	**G A R Sure Fire	Adj IMF
*G A R Complete N281		
*G A R Anticipation		BW Adj RE
GB Ambush 269		73
*Mytty In Focus		Adj WW Adj Rib Fat
#A A R Ten X 7008 S A		
*Hoffman Henrietta Pride 4668	#A A R Lady Kelton 5551	
17959870	*Sitz Upward 307R	Adj YW Adj Rmp Fat
*Sitz Henrietta Pride X10	**Sitz Henrietta Pride 630T	

\$AXH: +187.4%	\$AXL: +180.5%						
CED	BEPD	WEPD	YEPD	RADG	SC	DOC	
+1	+5.1	+101.1%	+180.1%	+38.1%	+87	+20	
CLAW	ANGLE	HS	MILK	CW	MARB	RE	FAT
+61	+45	+38.25%	+29	+92.1%	+1.80.1%	+93.15%	+0.009
\$M	\$W	\$F	\$G	\$B	\$C		
+57	+79.5%	+136.1%	+111.1%	+248.1%	+379.1%		

Consigned by: Michael Rister Farms & JB Bourgeois Farms
This Fireball son will add the pounds with the top 1% Weaning and Yearling Weights. Don't miss the top carcass traits with top 1% Marbling and Carcass Weight. The dam of this bull stems back to the foundation Henrietta Pride donor at the Hoffman Ranch. Top 1% \$F, \$G, \$B, and \$C.

40 JBBF JET BLACK 0113

11-12-2020 Bull **20061057 Tattoo: 0113



*Connealy Black Granite	**Connealy Consensus 7229	Adj IMF
*Eura Elga of Conanga 9109		
*Bar R Jet Black 5063	#Sitz Upward 307R	BW Adj RE
18389838	Bar R Anita 7081	80
Bar R Iris Anita 0113	*Mytty In Focus	Adj WW Adj Rib Fat
*A A R Ten X 7008 S A	#A A R Lady Kelton 5551	
*Hoffman Henrietta Pride 4668	*Sitz Upward 307R	Adj YW Adj Rmp Fat
17959870	**Sitz Henrietta Pride 630T	

\$AXH: +195.3%	\$AXL: +189.3%						
CED	BEPD	WEPD	YEPD	RADG	SC	DOC	
+6	+1.4	+89.2%	+149.4%	+26	+1.24	+16	
CLAW	ANGLE	HS	MILK	CW	MARB	RE	FAT
+49	+48	+42	+31.20%	+78.3%	+1.00.15%	+82.25%	+0.028
\$M	\$W	\$F	\$G	\$B	\$C		
+63	+87.1%	+116.5%	+71.15%	+187.5%	+306.5%		

Consigned by: Michael Rister Farms & JB Bourgeois Farms
If you are looking for pounds at weaning, this Jet Black son is your bull. Top 5% Weaning and Yearling Weights. Thick-body bull that indexes top 5% for \$W, \$F, \$B, and \$C. The dam of this bull stems back to the foundation Henrietta Pride donor at the Hoffman Ranch.

41 TS TEN X 105

02-20-2021 Bull **20118232 Tattoo: 105



*Mytty In Focus	#S A F Focus of E R	Adj IMF
*A A R Ten X 7008 S A	Mytty Countess 906	3.85
15719841	S A V Adaptor 2213	BW Adj RE
*Summitcrest Complete 1P55	#C F Right Design 1802	70 10.6
*BJ Complete 1165	Summitcrest Elba 1M17	Adj WW Adj Rib Fat
17128655	*H S A F Lady Kelton 504B	565 .13
*BJ 5050 New Design 9164	*G A R New Design 5050	Adj YW Adj Rmp Fat
*Sitz Henrietta Pride X10	*BJ 112 Rito 6115	.12

\$AXH: +133.25%	\$AXL: +116						
CED	BEPD	WEPD	YEPD	RADG	SC	DOC	
+6	+2.4	+74.20%	+127.25%	+32.10%	+1.60.15%	+15	
CLAW	ANGLE	HS	MILK	CW	MARB	RE	FAT
+67	+54	+47	+22	+45	+1.01.15%	+61	+0
\$M	\$W	\$F	\$G	\$B	\$C		
+66	+64	+93	+71.15%	+164.20%	+279.20%		

Consigned by: Twin Silo's Farm LLC, Clint Cooksey
Ten X son out of a Summitcrest Complete daughter. Combination bull with balanced production, maternal, and carcass values. Top 15% Marb, \$G; top 20% WW, \$B, and \$C.

Save the Date!

LOUISIANA ANGUS ASSOCIATION
5.13.2023 Female Sale

SATURDAY • SHREVEPORT, LA • NOON

FOR MORE INFORMATION CONTACT:
LUKE MOBLEY 205-270-0999

Two-Year-Olds

42 TS TEN X 106

02-28-2021

Bull **20118233

Tattoo: 106



****Mytty In Focus** #S A F Focus of E R
****A A R Ten X 7008 S A** Mytty Countess 906
 15719841 #A A R Lady Kelton 5551 S A V Adaptor 2213
ANGUS #*Summitcrest Complete 1P55 #C F Right Design 1802
****BJ Complete 1165** Summitcrest Elba 1M17
 17128655 #*BJ 5050 New Design 9164 #*G A R New Design 5050
 \$AxH: +161 15% \$AxL: +159 10% #*BJ 112 Rito 6115

Adj IMF	3.17
BW	65
Adj WW	573
Adj YW	573
Adj Rib Fat	11.7
Adj Rmp Fat	.13
DOC	.08

CED	BEPD	WEPD	YEPD	RADG	SC	DOC	
+3	+3.8	+69	+131 20%	+34 3%	+1.61 15%	+30 5%	
CLAW	ANGLE	HS	MILK	CW	MARB	RE	FAT
+61	+43 25%	+57	+29	+49	+89 25%	+80 25%	-.011 20%
\$M	\$W	\$F	\$G	\$B	\$C		
+70	+58	+98 25%	+69 15%	+166 20%	+285 15%		

Consigned by: Twin Silo's Farm LLC, Clint Cooksey
 Flush mate to Lot 41 combination bull with balance EPDs. Top 15% \$G and \$C; top 20% YW and \$B; top 25% Marb and \$F.

44 WF TOUR OF DUTY 442

10-14-2020

Bull 20388719

Tattoo: 442



****R B Tour Of Duty 177** #**Werner War Party 2417
****WF Tour of Duty 306** #*B A Lady 6807 305
 18782866 #BJ Complete 1165 #*Summitcrest Complete 1P55
ANGUS #*BJ 5050 New Design 9164
 #G A R Retail Product #G A R Precision 1680
WF Retail Product 181 #G A R Ext 4927
 17674066 Lauras Smart Rito 851 #Rito 2K6 of 2536 Rito 3X25
 Harvey's Smart Level 517

Adj IMF	
BW	85
Adj WW	742
Adj YW	742
Adj Rib Fat	
Adj Rmp Fat	
DOC	

CED	BEPD	WEPD	YEPD	RADG	SC	DOC	
+2	+3.7	+72 20%	+124 25%	+28 25%	+1.50 15%	+15	
CLAW	ANGLE	HS	MILK	CW	MARB	RE	FAT
+55	+45	+41	+32 15%	+51	+84	+74	+0.019
\$M	\$W	\$F	\$G	\$B	\$C		
+69	+66 25%	+91	+63 25%	+154	+269 25%		

Consigned by: Windham Farms, Kevin Windham
 Tour Of Duty grandson and stemming back to Retail Product on the bottom side. Growth bull with maternal and carcass.

43 WF TOUR OF DUTY 438

09-14-2020

Bull 20388720

Tattoo: 438



****R B Tour Of Duty 177** #**Werner War Party 2417
****WF Tour of Duty 306** #*B A Lady 6807 305
 18782866 #BJ Complete 1165 #*Summitcrest Complete 1P55
ANGUS #*BJ 5050 New Design 9164
 #*Sitz Upward 307R #*Connealy Onward
WF Upward 230 #*Sitz Henrietta Pride 81M
 18068219 #G A R Daybreak M671 #MCC Daybreak
 #G A R Objective 2827

Adj IMF	
BW	90
Adj WW	691
Adj YW	691
Adj Rib Fat	
Adj Rmp Fat	
DOC	

CED	BEPD	WEPD	YEPD	RADG	SC	DOC	
+12 10%	+8	+75 15%	+132 15%	+28 25%	+26	+22	
CLAW	ANGLE	HS	MILK	CW	MARB	RE	FAT
+53	+37 10%	+38 25%	+21	+66 15%	+83	+1.03 10%	+0.001
\$M	\$W	\$F	\$G	\$B	\$C		
+67	+67 25%	+114 10%	+68 15%	+182 10%	+303 10%		

Consigned by: Windham Farms, Kevin Windham
 Calving ease Tour of Duty grandson out of a Sitz Upward daughter with great EPDs across the board. Top 10% \$F, \$C, RE and \$B; top 15% WW, YW, CW, and \$G.

45 WF TOUR OF DUTY 443

09-01-2020

Bull *20388721

Tattoo: 443



****R B Tour Of Duty 177** #**Werner War Party 2417
****WF Tour of Duty 306** #*B A Lady 6807 305
 18782866 #BJ Complete 1165 #*Summitcrest Complete 1P55
ANGUS #*BJ 5050 New Design 9164
 #*FF Rito 2Q26 of 356H 9Q13 #*Rito 9Q13 of Rito 5F56 GHM
****WF Rito 2Q26 363** #J/R Queen of New Design 356H
 19351539 #G A R Daybreak M671 #MCC Daybreak
 #G A R Objective 2827

Adj IMF	
BW	90
Adj WW	745
Adj YW	745
Adj Rib Fat	
Adj Rmp Fat	
DOC	

CED	BEPD	WEPD	YEPD	RADG	SC	DOC	
+0	+5.6	+76 15%	+137 15%	+34 3%	+1.20	+22	
CLAW	ANGLE	HS	MILK	CW	MARB	RE	FAT
+41 20%	+39 10%	+57	+23	+60 25%	+44	+1.28 1%	-.082 1%
\$M	\$W	\$F	\$G	\$B	\$C		
+60	+53	+109 10%	+60	+168 15%	+278 20%		

Consigned by: Windham Farms, Kevin Windham
 Sired by a son of Tour Of Duty with a lot of growth. Top 10% \$F; top 15% WW, YW, and \$B; and top 20% \$C.



R B TOUR OF DUTY 177 - GRANDSIRE OF LOTS 43 - 45

46 WF ANTICIPATION 441

09-27-2020

Bull *20388726

Tattoo: 441



***G A R Anticipation** #MCC Daybreak
****G A R Anticipation J5098** #G A R 5050 New Design 0530
 18301401 #*Maplecrest Rita K2160 #*Summitcrest Complete 1P55
ANGUS #*Maplecrest Rita F8187
 #*G A R Prophet #*G A R Prophet
WF Prophet 291 #G A R 5050 New Design A84
 18449390 #G A R 5050 New Design G29 #*G A R New Design 5050
 #G A R Predestined N585

Adj IMF	
BW	74
Adj WW	701
Adj YW	701
Adj Rib Fat	
Adj Rmp Fat	
DOC	

CED	BEPD	WEPD	YEPD	RADG	SC	DOC	
+3	+2.3	+58	+99	+22	+1.51 15%	+16	
CLAW	ANGLE	HS	MILK	CW	MARB	RE	FAT
+45	+44	+24 10%	+26	+25	+1.45 2%	+60	-.003
\$M	\$W	\$F	\$G	\$B	\$C		
+56	+52	+59	+91 2%	+150	+251		

Consigned by: Windham Farms, Kevin Windham
 Anticipation grandson that stems back to Prophet and New Design on the bottom side. Top 1% \$G; top 2% Marb.



G A R ANTICIPATION - GRANDSIRE OF LOTS 46 - 49

49 WF ANTICIPATION 436

09-06-2020 Bull #20388718 Tattoo: 436



*G A R Anticipation		#MCC Daybreak		Adj IMF
+*G A R Anticipation J5098		+G A R 5050 New Design 0530		
18301401	*Maplecrest Rita K2160	#*Summitcrest Complete 1P55	BW	Adj RE
ANGUS		+Maplecrest Rita F8187	85	
#G A R Retail Product		#*Boyd New Day 8005	Adj WW	Adj Rib Fat
WF Retail Product 232		#MCC Daybreak	685	
18068220	+Hbar Forevdr Lady 8509	#G A R Ext 4927	Adj YW	Adj Rmp Fat
\$AxH: +127		\$AxL: +111		

CED	BEPD	WEPD	YEPP	RADG	SC	DOC	
+7	+2.7	+62	+120	+2.7	+1.09	+4	
CLAW	ANGLE	HS	MILK	CW	MARB	RE	FAT
+4.9	+4.7	+5.6	+31 20%	+51	+85 25%	+7.6	-009 25%
\$M	\$W	\$F	\$G	\$B	\$C		
+37	+54	+95	+66 20%	+161 20%	+246		

Consigned by: Windham Farms, Kevin Windham
Sired by an Anticipation son with above average EPDs across the board.

47 WF ANTICIPATION 440

09-20-2020 Bull 20388722 Tattoo: 440



*G A R Anticipation		#MCC Daybreak		Adj IMF
+*G A R Anticipation J5098		+G A R 5050 New Design 0530		
18301401	*Maplecrest Rita K2160	#*Summitcrest Complete 1P55	BW	Adj RE
ANGUS		+Maplecrest Rita F8187	75	
#G A R Retail Product		#G A R Precision 1680	Adj WW	Adj Rib Fat
WF Retail Product 232		+G A R Ext 4927	709	
18068220	+Hbar Forevdr Lady 8509	#S A V 8180 Traveler 004	Adj YW	Adj Rmp Fat
\$AxH: +127		\$AxL: +111		

CED	BEPD	WEPD	YEPP	RADG	SC	DOC	
+9	+2.0	+64	+108	+20	+7.6	+4	
CLAW	ANGLE	HS	MILK	CW	MARB	RE	FAT
+5.2	+4.7	+4.8	+22	+45	+95 20%	+5.9	+0
\$M	\$W	\$F	\$G	\$B	\$C		
+68	+59	+82	+68 15%	+150	+263		

Consigned by: Windham Farms, Kevin Windham
Anticipation grandson out of a Retail Product daughter. Moderate calving ease with carcass. Top 15% \$G; top 20% Marb.



LOT 50



ROSENEATH ELLUNA 189 - DAM OF LOT 50

48 WF ANTICIPATION 435

09-02-2020 Bull 20388724 Tattoo: 435



*G A R Anticipation		#MCC Daybreak		Adj IMF
+*G A R Anticipation J5098		+G A R 5050 New Design 0530		
18301401	*Maplecrest Rita K2160	#*Summitcrest Complete 1P55	BW	Adj RE
ANGUS		+Maplecrest Rita F8187	71	
#G A R New Design 5050		#B/R New Design 036	Adj WW	Adj Rib Fat
+Jacs Rita 9314		G A R Precision 706	680	
16660615	+BJAF Rita 389 1157 1680	#G A R Precision 1680	Adj YW	Adj Rmp Fat
\$AxH: +106		\$AxL: +92		

CED	BEPD	WEPD	YEPP	RADG	SC	DOC	
+12 10%	-7 15%	+48	+92	+24	+1.14	+7	
CLAW	ANGLE	HS	MILK	CW	MARB	RE	FAT
+4.3 25%	+4.4	+6.2	+26	+40	+80	+6.9	-035 4%
\$M	\$W	\$F	\$G	\$B	\$C		
+35	+46	+84	+65 20%	+149	+228		

Consigned by: Windham Farms, Kevin Windham
Calving ease Anticipation grandson out of a New Design daughter. Top 10% CED with a +12.

70 ROSENEATH EFFECTIVE 049

10-14-2020 Bull 20098082 Tattoo: 049



*AB-LVS Capitalist 4507		#Connealy Capitalist 028		Adj IMF
McD Effective 789		#Ab-Lvs Emma 096		
18952013	#McD Performiss 238	#Willekes Converter 4402-9	BW	Adj RE
ANGUS		+313 Performiss 006	82	
#TC Aberdeen 759		#C R A Bextor 872 5205 608	Adj WW	Adj Rib Fat
Roseneath Elluna 189		#TC Blackbird 4034	475	
17326242	+Roseneath Elluna 975	#S A V Final Ansvor 0035	Adj YW	Adj Rmp Fat
\$AxH: +91		\$AxL: +50		

CED	BEPD	WEPD	YEPP	RADG	SC	DOC	
+8	-6 15%	+49	+90	+1.9	+0.81	+21	
CLAW	ANGLE	HS	MILK	CW	MARB	RE	FAT
+5.0	+5.5	+7.9	+30 25%	+29	+1.14 10%	+3.4	+060
\$M	\$W	\$F	\$G	\$B	\$C		
+54	+53	+68	+68 15%	+136	+230		

Consigned by: Roseneath Plantation, David B Means III
We selected 049 as our top 2020 calving ease bull to breed to heifers, and he did a splendid job. He is sired by the high efficiency McD Effective 789, and has a Marbling EPD in the top 10% of the breed. Extremely attractive and powerfully made, 049 is ready for heavy service.

SCF INSIGHT 1401 2017

09-15-2020	Bull *20024538	Tattoo: 2017					
#*S A V Brilliance 8077	#*S A V Bismarck 5682	Adj IMF					
#**PVF Insight 0129	S A V Blackcap May 5270	BW					
16805884	**PVF Missie 790	Adj RE					
	#*P V F New Horizon 001	Adj WW					
#S A V Prosperity 9131	P V F Miss Raptor 024	Adj Rib Fat					
SCF Ernestine 8717 1401	#S A V Providence 6922	Adj YW					
17875325	Monogram Ernestine 8717	Adj Rmp Fat					
\$AXH: +71	\$AXJ: +72						
CED	BEPD	WEPD	YEPD	RADG	SC	DOC	
+3	+2.6	+60	+109	+26	+19	+27 15%	
CLAW	ANGLE	HS	MILK	CW	MARB	RE	FAT
+49	+51	+45	+27	+57	+14	+94 15%	-036 4%
\$M	\$W	\$F	\$G	\$B	\$C		
+66	+55	+105 15%	+37	+143	+251		

Consigned by: Schexnayder Cattle Farm, Dale Schexnayder
Son of the ever popular PVF Insight and stemming from the Ernestine cow family. Top 4% Fat; top 15% RE and \$F.

PINE TREE RESOURCE 117

02-10-2021	Bull **20326575	Tattoo: 117					
+Rito 707 of Ideal 3407 7075	#R R Rito 707	Adj IMF					
#**S A V Resource 1441	Ideal 3407 of 1418 076	BW					
17016597	*S A V Blackcap May 4136	Adj RE					
	#S A V 8180 Traveler 004	Adj WW					
#*Connealy Confidence 0100	#S A V May 2397	Adj Rib Fat					
#*LHA Lady Confidence 1131-517	Connealy Tobin	Adj YW					
18245082	*R B Lady 890-1131	Adj Rmp Fat					
\$AXH: +117	\$AXJ: +81						
CED	BEPD	WEPD	YEPD	RADG	SC	DOC	
+1	+2.0	+63	+115	+25	+80	+12	
CLAW	ANGLE	HS	MILK	CW	MARB	RE	FAT
+35 5%	+41 15%	+84	+33 15%	+51	+54	+77	+005
\$M	\$W	\$F	\$G	\$B	\$C		
+66	+65	+94	+50	+144	+253		

Consigned by: Pine Tree Ranch, Enyart Mitchell
Sired by S A V Resource and out of a Connealy Confidence daughter. A maternal bull with balanced EPDs.

AK GROWTH FUND 2012

12-20-2020	Bull **20410454	Tattoo: 2012					
#**Basin Payweight 1682	#**Basin Payweight 0065	Adj IMF					
#*Deer Valley Growth Fund	21AR O Lass 7017	BW					
18827828	**Deer Valley Rita 36113	Adj RE					
	#*Plattemere Weigh Up K360	Adj WW					
#*Deer Valley All In	+Deer Valley Rita 9457	Adj Rib Fat					
#RWA All In W1344	#*A A R Ten X 7008 S A	Adj YW					
17957152	+G A R Bextor L58	Adj Rmp Fat					
\$AXH: +112	\$AXJ: +91						
CED	BEPD	WEPD	YEPD	RADG	SC	DOC	
+9	+2.2	+90 2%	+167 1%	+36 1%	+1.04	+21	
CLAW	ANGLE	HS	MILK	CW	MARB	RE	FAT
+58	+52	+73	+27	+68 10%	+61	+53	+039
\$M	\$W	\$F	\$G	\$B	\$C		
+70	+80 4%	+110 10%	+48	+158 25%	+275 20%		

Consigned by: A&K Farm, Kyle Baker
Growth Fund son with a lot of muscle and is a well put together bull. Good footed and gentle. Top 2% WW; top 1% YW.



DEER VALLEY GROWTH FUND - SIRE OF LOT 52



V A R POWER PLAY 7018 - SIRE OF LOT 55

PINE TREE GENERATION 115

02-23-2021	Bull **20378213	Tattoo: 115					
#*Connealy Consensus 7229	#*Connealy Consensus	Adj IMF					
#*V A R Generation 2100	Blue Lilly of Conanga 16	BW					
17171587	**Sandpoint Blackbird 8809	Adj RE					
	#*Connealy Onward	Adj WW					
#*O C C Emblazon 854E	+Riverbend Blackbird 4301	Adj Rib Fat					
#Limestone Rita U950	#D H D Traveler 6807	Adj YW					
16365299	+G A R Ext 669	Adj Rmp Fat					
\$AXH: +111	\$AXJ: +97						
CED	BEPD	WEPD	YEPD	RADG	SC	DOC	
+4	+3.0	+72 20%	+125 25%	+24	+10	+22	
CLAW	ANGLE	HS	MILK	CW	MARB	RE	FAT
+56	+60	+54	+24	+54	+78	+72	+031
\$M	\$W	\$F	\$G	\$B	\$C		
+72 25%	+66 25%	+92	+59	+151	+268 25%		

Consigned by: Pine Tree Ranch, Enyart Mitchell
Generation son out of the O C C Emblazon daughter. A growth and production bull with carcass traits.

TOP POWER PLAY 002

10-10-2020	Bull 19987837	Tattoo: 002					
#**Basin Payweight 1682	#**Basin Payweight 0065	Adj IMF					
#*V A R Power Play 7018	21AR O Lass 7017	BW					
18717078	**Sandpoint Blackbird 8809	Adj RE					
	#*Connealy Onward	Adj WW					
Nichols Quiet Lad X90	+Riverbend Blackbird 4301	Adj Rib Fat					
TOP Queen Mother 307	#Nichols Quiet Lad T9	Adj YW					
17804539	Top Queen Mother 102	Adj Rmp Fat					
\$AXH: +9	\$AXJ: -21						
CED	BEPD	WEPD	YEPD	RADG	SC	DOC	
+9	+1.6	+60	+102	+18	+67	+26 15%	
CLAW	ANGLE	HS	MILK	CW	MARB	RE	FAT
+45	+50	+86	+26	+36	+42	+19	+062
\$M	\$W	\$F	\$G	\$B	\$C		
+68	+59	+75	+32	+107	+207		

Consigned by: Bryan TOP Angus, Warren Bryan
Muscular Power Play son recommended for large frame heifers or cows. Dam is a heavy milking cow that is still producing at 11 years of age.

61 LW RIGHTEOUS 2018

07-09-2020 Bull 20527785 Tattoo: 2018

**Baldridge Waylon W34		**GAR-EGL Protege		Adj IMF			
+*2 Bar Righteous 5017		*Baldridge Blackcap T163		BW Adj RE			
18076213	+G A R Daybreak M721	*MCC Daybreak		62	Adj Rib Fat		
ANGUS <small>ANGUS</small>		*G A R Objective 2827		Adj WW Adj Rib Fat			
*EXAR Comanchero 3030B		*EXAR Comanchero 1022B		Adj YW Adj Rmp Fat			
LW Patriot 1776		*EXAR Royal Lass 0791					
20522615	L W Example Queen 9017	Lone Wolf Example 771					
\$AxH: +119	\$AxJ: +100	R&R Queen 7112 3323					
CED	BEPD	WEPD	YEPD	RADG	SC	DOC	
-1	+4.0	+78 10%	+135 15%	+24	-35	+21	
CLAW	ANGLE	HS	MILK	CW	MARB	RE	FAT
+68	+4.7	+6.7	+26	+58 25%	+50	+91 15%	-005
\$M	\$W	\$F	\$G	\$B	\$C		
+64	+68 25%	+95	+51	+147	+255		

Consigned by: Lone Wolf Angus, Earl Lemoine
Growth bull sired by a Waylon son and out of a Comanchero daughter. Top 10% WW; 15% YW and RE EPDs.



BALDRIDGE WAYLON W34 - GRANDSIRE OF LOTS 61- 64 & 66

62 LW RIGHTEOUS 2029

11-23-2020 Bull 20518475 Tattoo: 2029

**Baldridge Waylon W34		**GAR-EGL Protege		Adj IMF			
+*2 Bar Righteous 5017		*Baldridge Blackcap T163		BW Adj RE			
18076213	+G A R Daybreak M721	*MCC Daybreak		64	Adj Rib Fat		
ANGUS <small>ANGUS</small>		*G A R Objective 2827		Adj WW Adj Rib Fat			
**HA Cowboy Up 5405		*HA Outside 3008		Adj YW Adj Rmp Fat			
LW Cowboy Cupid 1803		*HA Blackcap Lady 1602					
20493085	LW Big Eye 1438	*BJ Big Eye 0137					
\$AxH: +25	\$AxJ: +13	L W Blackbird T109					
CED	BEPD	WEPD	YEPD	RADG	SC	DOC	
+6	+3.7	+77 15%	+139 10%	+32 10%	-80	+18	
CLAW	ANGLE	HS	MILK	CW	MARB	RE	FAT
+67	+4.7	+1.04	+13	+48	+2.7	+63	-033 5%
\$M	\$W	\$F	\$G	\$B	\$C		
+40	+49	+89	+39	+128	+206		

Consigned by: Lone Wolf Angus, Earl Lemoine
Baldridge Waylon grandson out of a Cowboy Up daughter. Growth bull with top 10% YW and 15% WW EPDs.

63 LW RIGHTEOUS2038

12-27-2020 Bull 20522557 Tattoo: 2038

**Baldridge Waylon W34		**GAR-EGL Protege		Adj IMF			
+*2 Bar Righteous 5017		*Baldridge Blackcap T163		BW Adj RE			
18076213	+G A R Daybreak M721	*MCC Daybreak		64	Adj Rib Fat		
ANGUS <small>ANGUS</small>		*G A R Objective 2827		Adj WW Adj Rib Fat			
*BJ Big Eye 0137		*ALC Big Eye D09N		Adj YW Adj Rmp Fat			
LW Pendleton 1545		*BJ T12 Rito 6115					
20509149	R&R Beauty 1022 4064	*BT New Trend 533L					
\$AxH: +68	\$AxJ: +81	Triple E Beauty 1022					
CED	BEPD	WEPD	YEPD	RADG	SC	DOC	
-3	+5.1	+71 25%	+124 25%	+26	+30	+21	
CLAW	ANGLE	HS	MILK	CW	MARB	RE	FAT
+67	+4.5	+7.3	+23	+58 25%	+4.8	+88 15%	+002
\$M	\$W	\$F	\$G	\$B	\$C		
+50	+50	+100 20%	+49	+149	+243		

Consigned by: Lone Wolf Angus, Earl Lemoine
Growth bull with carcass values sired by Waylon son. Top 15% RE; top 25% WW, YW, and CW.

64 LW RIGHTEOUS 2004

03-21-2020 Bull 20533852 Tattoo: 2004

**Baldridge Waylon W34		**GAR-EGL Protege		Adj IMF			
+*2 Bar Righteous 5017		*Baldridge Blackcap T163		BW Adj RE			
18076213	+G A R Daybreak M721	*MCC Daybreak		76	Adj Rib Fat		
ANGUS <small>ANGUS</small>		*G A R Objective 2827		Adj WW Adj Rib Fat			
*EXAR Comanchero 3030B		*EXAR Comanchero 1022B		Adj YW Adj Rmp Fat			
LW Comanchero 1766		*EXAR Royal Lass 0791					
20522558	LW Big Eye 1320	*BJ Big Eye 0137					
\$AxH: +65	\$AxJ: +85	L W Lady High Rise 3361 7019					
CED	BEPD	WEPD	YEPD	RADG	SC	DOC	
-3	+5.1	+73 20%	+127 25%	+26	+29	+22	
CLAW	ANGLE	HS	MILK	CW	MARB	RE	FAT
+68	+4.6	+7.3	+23	+60 25%	+4.7	+89 15%	+003
\$M	\$W	\$F	\$G	\$B	\$C		
+51	+52	+103 15%	+49	+151	+247		

Consigned by: Lone Wolf Angus, Earl Lemoine
Growth bull sired by a Baldridge Waylon son.

65 CH TOP CAT 1907

12-05-2019 Bull 19863494 Tattoo: 1907

**Baldridge Waylon W34		**GAR-EGL Protege		Adj IMF			
*CH Top Cat		*Baldridge Blackcap T163		BW Adj RE			
18286367	+Exar Evas 7883	*EXAR 263C		Adj WW Adj Rib Fat			
+Exar Objective 8203		*G A R Evas Ext 1525		Adj YW Adj Rmp Fat			
EXAR Chloe 0190		*Riverbend Blackcap 4341					
16574321	+Exar Chloe 8167	*EXAR 263C					
\$AxH: +20	\$AxJ: +3	Basin Chloe 812L					
CED	BEPD	WEPD	YEPD	RADG	SC	DOC	
+1	+3.6	+57	+111	+27	+56	+14	
CLAW	ANGLE	HS	MILK	CW	MARB	RE	FAT
+64	+4.8	+6.9	+22	+42	+7.7	+36	+023
\$M	\$W	\$F	\$G	\$B	\$C		
+49	+41	+92	+54	+147	+240		

Consigned by: Circle H Farms, Arlene Hargroder
An age-advantage bull ready to cover a large group of females. Baldridge Waylon grandson out of an Objective daughter. Growth and carcass bull.

66 CH TOP CAT 1908

11-16-2019 Bull 19863506 Tattoo: 1908

**Baldridge Waylon W34		**GAR-EGL Protege		Adj IMF			
*CH Top Cat		*Baldridge Blackcap T163		BW Adj RE			
18286367	+Exar Evas 7883	*EXAR 263C		Adj WW Adj Rib Fat			
*Rito 6EM3 of 4L1 Emblazon		*O C C Emblazon 854E		Adj YW Adj Rmp Fat			
+EXAR Princess 1946		*Rita 4L1 of 2536 208					
16853293	+EXAR Princess 6205	*S A V 8180 Traveler 004					
\$AxH: +38	\$AxJ: -3	WK Princess 1194					
CED	BEPD	WEPD	YEPD	RADG	SC	DOC	
+4	+2.1	+52	+100	+26	+54	+14	
CLAW	ANGLE	HS	MILK	CW	MARB	RE	FAT
+56	+4.9	+6.7	+14	+25	+4.9	+25	+021
\$M	\$W	\$F	\$G	\$B	\$C		
+44	+34	+73	+40	+113	+191		

Consigned by: Circle H Farms, Arlene Hargroder
Baldridge Waylon grandson with Emblazon and Traveler on the bottom side. Age-advantage growth bull ready to cover a large group of females.





TARGETED NUTRITION PROGRAMS FOR SERIOUS RANCHERS

CUSTOM BLENDED FEED PROGRAMS with a local staff as passionate about serving our customers as you are about your operation. **YOU DESERVE THE SERVICE AND RELATIONSHIP** of a local company with the resources of a large one.

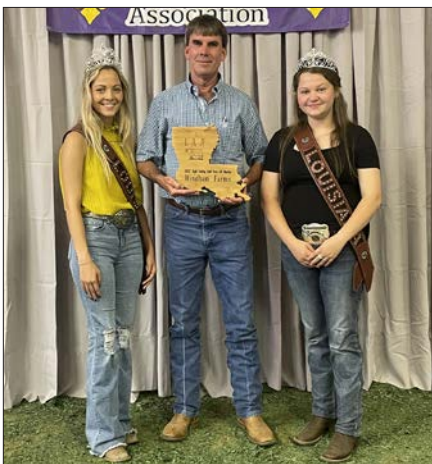
With over 15 locations, our nutritionists, experienced sales staff and committed employees are focused on delivering one thing... **BETTER FEED, BETTER RESULTS.**

☎ 800.777.5261 ✉ INFO@LNC-ONLINE.COM
LNC-ONLINE.COM



MATTHEW CRUSE

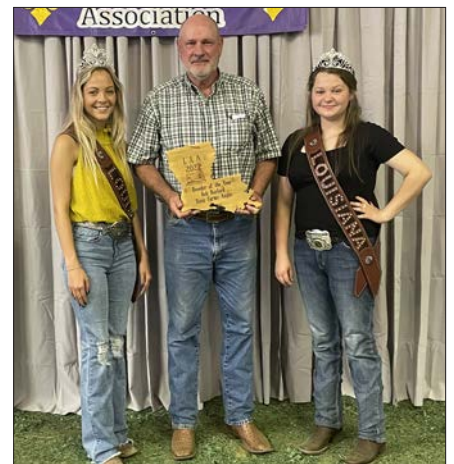
RANCHER, TEXAS GAME WARDEN
 & LNC DEALER



Kevin Windham, Windham Farms, Jena, La., center, received the 2022 high selling bull over 20 months award at the 2022 Louisiana Angus Association Annual Meeting, May 13 in Shreveport, La. Pictured presenting the award is Jacey LeJeune, Miss Louisiana Angus, left, and Camryn Greene, Louisiana princess, right.




Lee Robbins, Grand Bayou Farms, Ruston, La., center, received the 2021 high selling bred heifer at the 2022 Louisiana Angus Association Annual Meeting, May 13 in Shreveport, La. Pictured presenting the award is Jacey LeJeune, Miss Louisiana Angus, left, and Camryn Greene, Louisiana princess, right.



Robert Burford, Dixie Farms, Gloster, La., center, was named Breeder of the Year at the 2022 Louisiana Angus Association Annual Meeting, May 13 in Shreveport, La. Pictured presenting the award is Jacey LeJeune, Miss Louisiana Angus, left, and Camryn Greene, Louisiana princess, right.



These Angus producers were elected to serve on the Louisiana Angus Association board of directors and are pictured at the 2022 Louisiana Angus Association Annual Meeting, May 13 in Shreveport, La. Pictured front row from left are Lee Robbins, Ruston, director; Enyart Mitchell, Coushatta, director; Robert Burford, Gloster, president; Brady Mabile, Brusly, director; and David Billingsley, Keithville, vice president. Pictured back row from left Mark LeJeune, Elton, director; Drew Hall, Ethel, director; Kurt LeBeouf, Deridder, director; Warren Bryan, Ruston, director; Dale Schexnayder, Port Allen, treasurer; and Kevin Windham, Jena, director.

 **Mobley
Livestock
Marketing**
Col. Luke Mobley
600 West Pine St., Batesville, AR 72501

PSRT
FIRST CLASS
U.S. POSTAGE
PAID
St. Joseph, MO
Permit #2017



**LOUISIANA ANGUS
ASSOCIATION**
1.28.2023 *Bull Sale*

SATURDAY • KINDER LIVESTOCK AUCTION IN KINDER, LA • NOON

TWO-YEAR-OLD & LONG YEARLING BULLS • CALVING EASE BULLS AND HIGH PERFORMANCE BULLS
ALL BULLS WILL HAVE GENOMIC-ENHANCED EXPECTED PROGENY DIFFERENCES (GE-EPDS)