

LOUISIANA STATE FAIRGROUNDS • 3701 HUDSON STREET • SHREVEPORT, LA



LOUISIANA
ANGUS ASSOCIATION
Female Sale

SATURDAY | MAY 11, 2024 | NOON

GENERAL SALE INFORMATION

Sale Location: Louisiana State Fairgrounds in Shreveport, Louisiana

Sale Schedule and Inspection of Cattle:

Friday May 10:

6:00 PM Louisiana Angus Association Annual Banquet & Meeting

Saturday May 11:

7:00 Cattle available for viewing
 11:00 Lunch
 12:00 Louisiana Angus Association Sale

Sale Staff:

Luke Mobley, Sale Manager/Auctioneer 205-270-0999
 Shawn Gray, American Angus Association 352-425-9326
 Bob Burford, LAA President..... 318-464-8858
 Lee Robbins, Sale Committee..... 318-623-8762
 David Billingsly, LAA Sale Committee..... 318-623-8762
 Dale Schexnayder, LAA Treasurer 225-223-9242
 Mark Lejeune, LAA Vice President 337-249-3913
 Michelle Mobley, Office/Buyer Registration 205-454-6681

Absentee Bidding: Bid with confidence from the comfort of your home; simply call any member of Sale Staff or Sale Day Phones. All phone bidders are required to register for a bidder number before the sale. Registration begins Friday afternoon.

Online Bidding: Online bidding available through LiveAuction.TV, to register, watch or bid please visit www.LiveAuction.TV. **LiveAuctionsTV** TV Please register prior to sale. For questions or technical support please call 682-816-4900 or via email TechSupport@LiveAuction.TV After the sale buyers should contact Mobley Livestock Marketing to arrange payment & pickup or delivery of purchase(s).

Terms & Condition: Terms of the sale are cash or check. Full settlement must be made to the sales clerk immediately following the conclusion of the sale and before any cattle will be released from the barn. Unless prior arrangement has been made with seller or Mobley Livestock Marketing. Cattle sell under the suggested terms & conditions of the American Angus Association(www.Angus.org/pub/suggested_sale_terms.pdf)

Updates & Announcements: A supplemental update sheet will be available sale day with complete and up to date information. Bulls scrotal circumference plus females breeding and calving reports will be provided. Any changes from any kind in the sale catalog or related materials will be announced from the auction block. Such announcements shall take precedence.

Purchaser's Risk: All animals are the owner's risk prior to their sale. Each animal will become the risk of the purchaser as soon as sold.

Bidding: The auctioneer will settle any disputes as to bids, and his decision on such matters shall be final.

Certificate of Registry: A Certificate of registry for each registered animal will be transferred to the buyer at sellers expense.

Breeding Guarantee: All animals are guaranteed by the seller as outlined in the American Angus Association of America Suggested Sale Terms & Conditions.

Health: Complete health certificates will be provided on all cattle for immediate interstate shipment. Sale Day Veterinarian: Dr. Amanda Morse 318-625-2902

Liabilities: Anyone previewing the cattle and or attending the sale does so at their own risk. Mobley Livestock Marketing and associates, nor Louisiana Angus Association, nor anyone connected with the sale will be held liable for injury, property loss or accident that may occur to attendees or to purchased animals. Mobley Livestock Marketing and its representatives act as an agent only; agreement is between buyer and seller. The responsibility for sold animals passes to the buyer when sold by the auctioneer. Buyers are encouraged to purchase their own insurance on newly bought cattle.

Livestock Mortality Insurance: Insurance will be available on purchased cattle if desired. Ask Mobley Livestock Marketing associates for more information.

Trucking: Truckers believed to be reliable will be available to assist with shipping. Ask Mobley Livestock Marketing associates for more information.

Sale Accommodations: Hilton Garden Inn Shreveport, 318-686-0148, 5791 Financial Plaza, Shreveport, LA
 Several hotels located in the Shreveport Louisiana Financial Plaza area.

Food and Refreshments: Available at sale site, Lunch served at 11:00.

Sale Managed By:

Col. Luke Mobley 205-270-0999

www.LukeMobley.com • LukeMobley1@gmail.com



Welcome to the 2024 Louisiana Angus Association Female Sale. It is a great opportunity to be working with the Louisiana Angus Association members, bringing you an outstanding set of Angus females that were developed and raised in Louisiana. Providing you the opportunity to purchase Angus females adapted to the Louisiana environment and are capable of advancing your herd.

As you look through this sale book you will see an excellent selection of Fall & Spring Calving 3-in-1's Plus an outstanding set of Bred Heifers, Open Heifers and Fall Calving Bred Females. Be sure to note the elite Embryo Package offering

The Louisiana Angus Association is committed to providing the most accurate data available. All registered cattle will be genomic tested before sale date to increase predictability and decrease risk due to enhanced accuracy of EPDs. Providing you the information to buy with confidence.

I encourage you to contact these Angus seed stock producers to learn more about their Angus female offering.

Please contact me if you have any questions or if I can be of any assistance!

Thank You!
 Luke Mobley
 205-270-0999



LOUISIANA ANGUS ASSOCIATION CONSIGNORS

DIXIE FARMS ANGUS - LOTS 1-7, 23-28, 56-59

ROBERT (BOB) BURFORD 318-464-8858

DURAND CATTLE COMPANY - LOTS 9, 10, 12, 13, 15

CHIP DURAND 337-344-0486

FAIRWAY FARMS - LOTS 35-57

MONTE ETHINGTON 936-554-8935

GREENELINE ANGUS - LOT 34

GARY GREENE..... 985-966-0630

MAG ANGUS RANCH - LOTS 6-22, 31-33, 49-52

MARC & MAX GRABERT 318-458-6921

PINE TREE RANCH - LOTS 8, 11, 14, 29, 30, 53-55

ENYART MITCHELL..... 985-507-9227

AM EPDs contained in the hard copy of this sale book were current as of print date. Digital versions of this sale book can be viewed online at www.angus.org and will have EPDs updated every Friday with the exception of EPD references in footnotes and photos. Any PDF downloads from the website will contain EPDs current as of the date downloaded. References: American Angus Association®, AHIR®, AngusSource®, CAB®, Pathfinder®.

3-in-1 with Heifer Calf

| | | | | | | | | | |
|------------------------------|-------------------------------------------------|-----------------------------|---------------|--------------|-------------|-------------|------------|--------------|--------------|
| 1 | DIXIE RITA 1028 | 01-22-2021 | Cow *20295666 | Tattoo: 1028 | | | | | |
| | Poss Easy Impact 0119 #Poss Total Impact 745 | #Poss Elmaretta 736 | \$M +60 | | | | | | |
| **Baldridge Alternative E125 | Baldridge Blackbird A030 | #Hoover Dam | \$W +80 | 2% | | | | | |
| 18837398 | | Baldridge Blackbird X89 | \$F +118 | 3% | | | | | |
| ANGUS | #*Basin Payweight 1682 | #*Basin Payweight 0065 | \$G +43 | | | | | | |
| **Dixie Rita 7353 | 19217397 | *SJH Daylight of 0546 3044 | \$B +161 | 15% | | | | | |
| | | *G A R Daylight | \$C +269 | 20% | | | | | |
| | | *G A R 5050 New Design 0546 | | | | | | | |
| CED | BEPD | WEPD | YEPD | RADG | DMI | MILK | HP | CEM | |
| +14 | +1.9 | +86 | +155 | +32 | +1.98 | +32 | +13.9 | +14 | |
| 3% | | 2% | 1% | 4% | | 20% | 25% | 5% | |
| \$EN | SC | DOC | HS | CW | MARB | RE | FAT | \$AxH | \$AxJ |
| -40 | +1.06 | +22 | +.51 | +78 | +.41 | +.66 | -.016 | +125 | +102 |
| | | 25% | | 1% | | | 15% | 20% | 25% |



Dixie Rita 1028 - Lot 1

| | | | | | | | | | |
|--------------------|------------------------|-----------------------|---------------|--------------|-------------|-----------|-------------|--------------|--------------|
| 14 | DIXIE RITA 3635 | 10-18-2023 | Cow *20896850 | Tattoo: 3635 | | | | | |
| | *G A R Sunbeam | #*G A R Sunrise | \$M +73 | 25% | | | | | |
| *Connealy Commerce | | *G A R Ingenuity 3132 | \$W +85 | 2% | | | | | |
| 20132642 | *Avira of Conanga 814R | *Connealy Cade | \$F +112 | 10% | | | | | |
| | | *Avie of Conanga 624P | \$G +52 | | | | | | |
| | | | \$B +164 | | | | | | |
| | | | \$C +286 | 20% | | | | | |
| CED | BEPD | WEPD | YEPD | RADG | DMI | YH | MILK | HP | CEM |
| +12 | +2.0 | +90 | +159 | +.31 | +2.00 | +.7 | +33 | +17.3 | +19 |
| 10% | | 2% | 2% | 15% | | | 10% | 5% | 1% |
| \$EN | SC | DOC | HS | CW | MARB | RE | FAT | \$AxH | \$AxJ |
| -40 | +.86 | +21 | +.62 | +76 | +.53 | +1.01 | +.009 | +161 | +159 |
| | | | | 10% | | 15% | | 20% | 20% |



Dixie Rita 3635 - Lot 1A

| | | | | | | | | | |
|-------------------------|------------------------|---------------------------|---------------|--------------|-------------|-------------|------------|--------------|--------------|
| 2 | DIXIE LUCY 9617 | 11-18-2019 | Cow *19785074 | Tattoo: 9617 | | | | | |
| | #*Basin Payweight 1682 | #*Basin Payweight 0065 | \$M +79 | 10% | | | | | |
| **V A R Power Play 7018 | 18717078 | *Sandpoint Blackbird 8909 | \$W +91 | 1% | | | | | |
| ANGUS | #*PA Power Tool 9108 | *Riverbend Blackbird 4301 | \$F +87 | | | | | | |
| **FWY 9108 of 3829 3064 | 17610435 | *Basin Lucy 3829 | \$G +61 | 20% | | | | | |
| | | | \$B +148 | | | | | | |
| | | | \$C +271 | 15% | | | | | |
| CED | BEPD | WEPD | YEPD | RADG | DMI | MILK | HP | CEM | |
| +12 | +.8 | +84 | +144 | +.27 | +1.81 | +37 | +12.1 | +14 | |
| 10% | | 3% | 3% | 25% | | 4% | | 5% | |
| \$EN | SC | DOC | HS | CW | MARB | RE | FAT | \$AxH | \$AxJ |
| -22 | +1.39 | +24 | +.71 | +57 | +.81 | +.65 | +.013 | +132 | +118 |
| | 15% | 20% | | 15% | 20% | | | 20% | 20% |



Dixie Lucy 9617 - Lot 2

| | | | | | | | | | |
|---------------------|----------------------------|-----------------------------|---------------|--------------|-------------|-----------|-------------|--------------|--------------|
| 2A | DIXIE LUCY 3574 | 09-14-2023 | Cow *20896789 | Tattoo: 3574 | | | | | |
| | #*Connealy Confidence Plus | #*Connealy Confidence 0100 | \$M +86 | 5% | | | | | |
| **Sterling Bond 007 | | Elbanna of Conanga 1209 | \$W +85 | 2% | | | | | |
| 19823211 | *Miss Blackcap Ellston J2 | #*SydGen C C & 7 | \$F +81 | | | | | | |
| | | #Miss Blackcap Ellston D154 | \$G +68 | 25% | | | | | |
| | | | \$B +148 | | | | | | |
| | | | \$C +278 | 25% | | | | | |
| CED | BEPD | WEPD | YEPD | RADG | DMI | YH | MILK | HP | CEM |
| +11 | -.9 | +78 | +136 | +.30 | +1.37 | +.4 | +32 | +14.2 | +17 |
| 15% | 15% | 15% | 15% | 25% | | | 15% | 25% | 1% |
| \$EN | SC | DOC | HS | CW | MARB | RE | FAT | \$AxH | \$AxJ |
| -17 | +.38 | +28 | +.44 | +50 | +.78 | +1.04 | -.021 | +163 | +161 |
| | | 10% | | | | 10% | 15% | 20% | 15% |



Dixie Lucy 3574 - Lot 2A

Gorgeous, deep bodied and soggy like her dam, this daughter of Sterling Bond 007 is the kind we love to look at! Top 1% CEM, Top 2% \$W, Top 3% \$M, 17 EPD's or \$Values better than 25% of the breed.

3-in-1 with Heifer Calf



Dixie Burgess 3589 - Lot 3A



Dixie Rita 3544 - Lot 4A

3 DIXIE BURGESS 0511
09-06-2020 Cow *20378303 Tattoo: 0511

| | | | |
|-----------------------|----------------------------|-----|----------|
| *G A R Sure Fire 6404 | #*G A R Sure Fire | \$M | +50 |
| *GB Fireball 672 | +*G A R Complete N281 | \$W | +55 |
| 18690054 | *GB Anticipation 432 | \$F | +95 |
| | GB Ambush 269 | \$G | +83 3% |
| | #S Whitlock 179 | \$B | +178 10% |
| | #S Chisum 6175 | \$C | +281 15% |
| | #S Pride Anna 709 | | |
| | +Whitstone Survivor N088 | | |
| | Miss Burgess of Thistledev | | |

| | | | | | | | | |
|-----|------|------|------|------|-------|------|------|-----|
| CED | BEPD | WEPD | YEPD | RADG | DMI | MILK | HP | CEM |
| +9 | +2.5 | +60 | +108 | +2.5 | +1.38 | +31 | +8.8 | +12 |
| 25% | | | | | | 20% | | 15% |

| | | | | | | | | | |
|------|-------|-----|-----|-----|-------|-----|-------|-------|-------|
| \$EN | SC | DOC | HS | CW | MARB | RE | FAT | \$AxH | \$AxJ |
| -28 | +1.40 | +23 | +35 | +52 | +1.27 | +60 | +0.27 | +127 | +99 |
| | 15% | 20% | 15% | 25% | 3% | | | 20% | 25% |

Consigned by: Dixie Farms Angus, Bob Burford
A Fireball daughter that descends from an outcross maternal lineage that includes S Whitlock, Whitestone Survivor, Boyd New Day and Traveler 234D. Top 3% Marb, \$Grid, 19 EPD's, \$Values in the Top 25%. AI bred 12/13/2023 and checked safe to Poss Winchester, due 9/21/2024

4 DIXIE RITA 1093
04-13-2021 Cow *20292208 Tattoo: 1093

| | | | |
|----------------------|-----------------------------|-----|---------|
| #*G A R Momentum | #*G A R Progress | \$M | +42 |
| *Dixie Momentum 7566 | +G A R Big Eye 1770 | \$W | +51 |
| 19186362 | *FF Rita 5X49 of M721 Ten X | \$F | +118 3% |
| | *A A R Ten X 7008 S A | \$G | +99 1% |
| | +G A R Daybreak M721 | \$B | +217 1% |
| | *A A R Ten X 7008 S A | \$C | +323 2% |
| | *BoBo Rita 1559 | | |
| | #EXAR Denver 2002B | | |
| | +Deer Valley Rita 7856 | | |

| | | | | | | | | |
|-----|------|------|------|------|-----|------|------|-----|
| CED | BEPD | WEPD | YEPD | RADG | DMI | MILK | HP | CEM |
| +6 | +1.2 | +66 | +119 | +31 | +52 | +16 | +7.3 | +10 |
| | | | 25% | 10% | | | | |

| | | | | | | | | | |
|------|-----|-----|-----|-----|-------|-------|-------|-------|-------|
| \$EN | SC | DOC | HS | CW | MARB | RE | FAT | \$AxH | \$AxJ |
| -21 | +78 | +16 | +51 | +57 | +1.41 | +1.01 | -.018 | +229 | +209 |
| | | | | 15% | 2% | 4% | 15% | 1% | 1% |

Consigned by: Dixie Farms Angus, Bob Burford
High indexing daughter of Dixie Momentum 7566, a former herd sire at Dixie Farms Angus whose sons were very well received at the 2022 and 2023 Dixie Farms Angus Annual Bull Sales. Also, she descends from the prolific Deer Valley and Gardiner Angus Ranch donor, GAR 614. Top 1% to both of the Angus-on-Dairy \$Values, \$Grid and \$Beef, Top 2% \$Combination and Marb, Top 4% Ribeye. Ranks in the top 25% for 15 EPD's and \$Values. Bred 12/13/2023 to Baldrige Heat Seeker and checked safe, due 9/21/2024

3A DIXIE BURGESS 3589
09-21-2023 Cow *20896596 Tattoo: 3589

| | | | |
|------------------------|------------------------------|-----|----------|
| *Tehama Patriarch F028 | #S S Niagara Z29 | \$M | +67 |
| *Tehama Testament | Tehama Elite Blackbird D826 | \$W | +68 25% |
| 20019500 | Tehama Mary Blackbird E789 | \$F | +110 15% |
| | #Sitz Wisdom 481T | \$G | +83 10% |
| | #+Tehama Mary Blackbird Y677 | \$B | +193 10% |
| | | \$C | +317 10% |

| | | | | | | | | | |
|-----|------|------|------|------|-------|----|------|-------|-----|
| CED | BEPD | WEPD | YEPD | RADG | DMI | YH | MILK | HP | CEM |
| +4 | +2.5 | +69 | +127 | +2.7 | +1.61 | +5 | +37 | +13.4 | +7 |
| | | | 25% | | | | 3% | | |

| | | | | | | | | | |
|------|-------|-----|-----|-----|-------|-----|-------|-------|-------|
| \$EN | SC | DOC | HS | CW | MARB | RE | FAT | \$AxH | \$AxJ |
| -34 | +2.11 | +28 | +32 | +65 | +1.31 | +67 | +0.62 | +137 | +94 |
| | 2% | 10% | 20% | 20% | 10% | | | | |

Stylish daughter of the popular Tehama Testament with Top 1% Claw, Top 3% Milk and 15 EPD's or \$Values in the top 25%

4A DIXIE RITA 3544
09-03-2023 Cow *20896623 Tattoo: 3544

| | | | |
|---------------------|---------------------|-----|----------|
| #*KG Justified 3023 | Connealy Judgment | \$M | +71 |
| *Bear Mtn Justify | KG Miss Magic 1443 | \$W | +80 4% |
| 18886273 | Bear Mtn Judy 3092 | \$F | +110 15% |
| | #S A V Pioneer 7301 | \$G | +85 10% |
| | Bear Mtn Judy 0133 | \$B | +195 10% |
| | | \$C | +324 5% |

| | | | | | | | | | |
|-----|------|------|------|------|-----|----|------|-------|-----|
| CED | BEPD | WEPD | YEPD | RADG | DMI | YH | MILK | HP | CEM |
| +8 | +5 | +80 | +140 | +31 | +97 | +4 | +28 | +11.8 | +5 |
| | | 10% | 10% | 15% | | | | | |

| | | | | | | | | | |
|------|-------|-----|-----|-----|-------|-----|-------|-------|-------|
| \$EN | SC | DOC | HS | CW | MARB | RE | FAT | \$AxH | \$AxJ |
| -19 | +1.12 | +20 | +25 | +62 | +1.23 | +92 | +0.25 | +217 | +204 |
| | | | 15% | 25% | 15% | 20% | | 3% | 5% |

Dixie Rita 3544 in an attractive Bear Mountain Justify daughter that combines calving ease, growth, carcass and maternal with Top 3% and 5% Angus-on-Dairy \$Values, 4% \$W and 5% \$C. She has 15 EPD's and \$Values in the Top 25%



GB Fireball 672 - Sire of Lot 3



Prolific Donor GAR EXT 614 - Lot 4 & 4A are descendants from the famous cow line

3-in-1 with Heifer Calf



Dixie Rita 3527 - Lot 5A



Dixie Rita 1074 - Lot 6

5 DIXIE RITA 9546
09-13-2019 Cow #*19825207 Tattoo: 9546

#*V A R Generation 2100 #*Connealy Consensus 7229
 #*V A R Heritage 5038 #*Sandpoint Blackbird 8809
 18066052 #*SJH Complete of 6108 1564 #*Summitcrest Complete 1P55
 #*Sitz Upward 307R #*DRMCTR 111 Rita 6108
 #*Sitz Upward 307R #*Connealy Onward
 #*V A R Rita 0320 #*Sitz Henrietta Pride 81M
 16704616 #*G A R 1407 New Design 523 #*Bon View New Design 1407
 #*G A R Precision 819

| | | |
|-----|------|-----|
| \$M | +72 | 20% |
| \$W | +74 | 10% |
| \$F | +96 | |
| \$G | +48 | |
| \$B | +144 | |
| \$C | +259 | 25% |

| CED | BEPD | WEPD | YEPD | RADG | DMI | MILK | HP | CEM |
|-----|------|------|------|------|-------|------|-------|-----|
| +5 | +2.6 | +79 | +128 | +24 | +1.25 | +26 | +12.4 | +8 |
| | | 10% | 15% | | | | | |

| \$EN | SC | DOC | HS | CW | MARB | RE | FAT | \$AxH | \$AxJ |
|------|-------|-----|-----|-----|------|-----|-------|-------|-------|
| -21 | +1.64 | +18 | +71 | +59 | +43 | +94 | -0.21 | +118 | +134 |
| | 10% | | | 15% | | 10% | 10% | 25% | 15% |

Consigned by: Dixie Farms Angus, Bob Burford
 Top and bottom Vintage Angus Ranch bred cow that is a daughter of the producer to each of the high selling Bulls in the 2017, 2018 and 2019 Louisiana Angus Association Annual Bull Sales. 15 EPD's or \$Values in the top 25%. AI bred to KA Kindred and checked safe, due 9/21/2024

6 DIXIE RITA 1074
03-15-2021 Cow #*20295598 Tattoo: 1074

#*Connealy Black Granite #*Connealy Consensus 7229
 #*Bar R Jet Black 5063 #*Eura Elga of Conanga 9109
 18389838 Bar R Iris Anita 0113 #*Sitz Upward 307R
 #*Mytty In Focus
 #*A A R Ten X 7008 S A #*A A R Lady Kelton 5551
 #*RMRK Rita 6259 #*Callaways Cure All 1353
 18412713 #*CoX Rita 27R Y05C #*SQ 27R of 3540 FD

| | | |
|-----|------|-----|
| \$M | +61 | |
| \$W | +75 | 10% |
| \$F | +113 | 10% |
| \$G | +62 | 20% |
| \$B | +176 | 10% |
| \$C | +289 | 10% |

| CED | BEPD | WEPD | YEPD | RADG | DMI | MILK | HP | CEM |
|-----|------|------|------|------|-----|------|-------|-----|
| +7 | +1.4 | +78 | +130 | +30 | +51 | +26 | +10.2 | +8 |
| | | 10% | 10% | 10% | | | | |

| \$EN | SC | DOC | HS | CW | MARB | RE | FAT | \$AxH | \$AxJ |
|------|-----|-----|-----|-----|------|-----|-------|-------|-------|
| -24 | +92 | +18 | +34 | +64 | +80 | +85 | +0.26 | +189 | +184 |
| | | | 15% | 10% | 25% | 15% | | 2% | 2% |

Consigned by: Dixie Farms Angus, Bob Burford
 Dixie Rita 1074 is a well balanced, feminine cow that combines Jet Black with a daughter of Ten X and the 180,000 valued Rimrock donor, Cox Rita 27R Y05C. Top 2% to both of the Angus-on-Dairy \$Values and 4% \$Feedlot. Flush sister to Lot 7. Bred 12/13/2023 to Poss Rawhide, checked safe and due 9/21/2024

5A DIXIE RITA 3527
08-30-2023 Cow #*20896709 Tattoo: 3527

*Poss Maverick #*Basin Payweight 1682
 #*Poss Rawhide Poss Pride 5163
 19416968 #*Poss Blueblood 6502 Poss Easy Impact 0119
 Poss Blueblood 920

| | | |
|-----|------|-----|
| \$M | +74 | 25% |
| \$W | +77 | 10% |
| \$F | +99 | |
| \$G | +63 | |
| \$B | +162 | |
| \$C | +284 | 25% |

| CED | BEPD | WEPD | YEPD | RADG | DMI | YH | MILK | HP | CEM |
|-----|------|------|------|------|-----|----|------|-------|-----|
| +15 | -1.2 | +73 | +116 | +26 | +72 | +6 | +27 | +13.0 | +16 |
| | | 25% | | | 25% | | | | 1% |

| \$EN | SC | DOC | HS | CW | MARB | RE | FAT | \$AxH | \$AxJ |
|------|-------|-----|-------|-----|------|-------|-------|-------|-------|
| -18 | +1.56 | +23 | +1.11 | +57 | +78 | +1.03 | +0.28 | +168 | +173 |
| | 15% | | | | | 10% | | 20% | 15% |

Attractive, maternal daughter of the popular ST Genetics sire Poss Rawhide. She is a calving ease specialist in the Top 1% for Calving Ease Maternal and Top 2% Calving Ease Direct with 13 EPD's or \$Values better than 25%



Poss Rawhide - Sire of Lot 5A

6A DIXIE RITA 3568
09-10-2023 Cow #*20896851 Tattoo: 3568

*G A R Sunbeam #*G A R Sunrise
 #*Connealy Commerce #*G A R Ingenuity 3132
 20132642 #*Avira of Conanga 814R #*Connealy Cade
 #*Avie of Conanga 624P

| | | |
|-----|------|-----|
| \$M | +73 | 25% |
| \$W | +86 | 1% |
| \$F | +110 | 15% |
| \$G | +68 | 25% |
| \$B | +179 | 15% |
| \$C | +305 | 15% |

| CED | BEPD | WEPD | YEPD | RADG | DMI | YH | MILK | HP | CEM |
|-----|------|------|------|------|-------|----|------|-------|-----|
| +12 | +7 | +85 | +145 | +31 | +1.53 | +7 | +32 | +13.3 | +14 |
| | | 5% | 10% | 15% | | | 15% | | 5% |

| \$EN | SC | DOC | HS | CW | MARB | RE | FAT | \$AxH | \$AxJ |
|------|-------|-----|-----|-----|------|-----|-------|-------|-------|
| -31 | +1.69 | +21 | +30 | +70 | +88 | +93 | +0.18 | +184 | +183 |
| | 10% | | 20% | 15% | | 20% | | 10% | 10% |

Fancy daughter of the \$180,000 ST Genetics feature, Connealy Commerce. Top 1% \$Weaning and top 5% WW,CEM. 20 EPD's or \$Values in the top 25% of the Angus breed.



Connealy Commerce - Sire of Lot 6A

3-in-1 with Heifer Calf



Dixie Rita 1052 - Lot 7



Pine Tree Home Town 2165 with calf - Lots 8 & 8A

7 DIXIE RITA 1052
03-08-2021 Cow #*20295597 Tattoo: 1052

| | | | | |
|--------------------------------|----------------------------|-----|------|-----|
| #*Connealy Black Granite | #*Connealy Consensus 7229 | \$M | +60 | |
| #*Bar R Jet Black 5063 | #Eura Elga of Conanga 9109 | \$W | +70 | 15% |
| 18389838 Bar R Iris Anita 0113 | #*Sitz Upward 307R | \$F | +118 | 3% |
| ANGUS | Bar R Anita 7081 | \$G | +90 | 2% |
| #*A A R Ten X 7008 S A | #*Mytty In Focus | \$B | +208 | 1% |
| #*RMRK Rita 6259 | #A A R Lady Kelton 5551 | \$C | +330 | 1% |
| 18412713 | *Callaways Cure All 1353 | | | |
| | *SQ 27R of 3540 FD | | | |

| CED | BEPD | WEPD | YEPD | RADG | DMI | MILK | HP | CEM |
|-----|------|------|------|------|-----|------|-------|-----|
| +10 | +6 | +70 | +128 | +31 | +90 | +29 | +10.3 | +11 |
| 20% | | 20% | 15% | 10% | | | | 25% |

| \$EN | SC | DOC | HS | CW | MARB | RE | FAT | \$AxH | \$AxJ |
|------|-------|-----|-----|-----|-------|-----|-------|-------|-------|
| -19 | +1.00 | +14 | +62 | +65 | +1.39 | +65 | +0.22 | +226 | +212 |
| | | | | 10% | 2% | | | 1% | 1% |

Consigned by: Dixie Farms Angus, Bob Burford
Well balanced feminine cow that combines Jet Black with a daughter of Ten X and the 180,000 valued Rimrock donor, Cox Rita 27R Y05C. Top 2% to both of the Angus-on Dairy \$Values and 4% \$Feedlot. Flush sister to Lot 6. Bred 12/13/2023 to one of the newest additions to the Dixie Farms Angus and Select Sires roster; Riverbend Black Label J1810. Checked safe and due 9/21/2024

8 PINE TREE HOME TOWN 2165
01-14-2022 Cow #*20465118 Tattoo: 2165

| | | | | |
|---------------------|-------------------------------|-----|------|-----|
| #*G A R Ashland | *G A R Early Bird | \$M | +70 | |
| *G A R Home Town | *Chair Rock Ambush 1018 | \$W | +64 | |
| 19266718 | #*G A R Sure Fire | \$F | +88 | |
| ANGUS | *Chair Rock Progress 3005 | \$G | +106 | 2% |
| #*McKellar Now Look | #**Connealy Sullivan 83A | \$B | +194 | 10% |
| *GB Now Look 523 | *JMc Pearl's Answer 8446 6465 | \$C | +322 | 10% |
| 18367166 | *DRMCTR Objective 8304 | | | |
| | *DRMCTR III Rita 6108 | | | |

| CED | BEPD | WEPD | YEPD | RADG | DMI | MILK | HP | CEM |
|-----|------|------|------|------|-------|------|-------|-----|
| +14 | -1.0 | +60 | +111 | +23 | +1.27 | +27 | +14.2 | +12 |
| 4% | 10% | | | | | | 25% | 15% |

| \$EN | SC | DOC | HS | CW | MARB | RE | FAT | \$AxH | \$AxJ |
|------|-----|-----|-----|-----|-------|-------|-------|-------|-------|
| -6 | +86 | +11 | +52 | +42 | +1.45 | +1.10 | -.061 | +212 | +197 |
| | | | | | 5% | 10% | 1% | 4% | 10% |

Consigned by: Pine Tree Ranch, Enyart Mitchell
Very nice first calf heifer with excellent EPDs. She has a beautiful heifer calf born 2-12-24 by GAR Fireproof. This heifer gets you out front with a Fireproof progeny. This one will be special by stacking the 6095 cow on both sides. 2165 will be bred back by sale day.

7A DIXIE RITA 3518
08-29-2023 Cow #*20896631 Tattoo: 3518

| | | | | |
|---------------------|---------------------------|-----|------|-----|
| *G A R Quantum | #G A R Momentum | \$M | +64 | |
| *G A R Quantum Leap | *G A R In Sure 1524 | \$W | +79 | 5% |
| 19568666 | Chair Rock Sure Fire 6090 | \$F | +115 | 10% |
| | #*G A R Sure Fire | \$G | +91 | 5% |
| | +Chair Rock Ambush 3088 | \$B | +206 | 4% |
| | | \$C | +331 | 4% |

| CED | BEPD | WEPD | YEPD | RADG | DMI | YH | MILK | HP | CEM |
|-----|------|------|------|------|-------|----|------|------|-----|
| +5 | +2.5 | +86 | +150 | +30 | +1.59 | +5 | +28 | +9.9 | +2 |
| | | 4% | 5% | 25% | | | | | |

| \$EN | SC | DOC | HS | CW | MARB | RE | FAT | \$AxH | \$AxJ |
|------|-----|-----|-----|-----|-------|-----|-------|-------|-------|
| -28 | +91 | +21 | +37 | +71 | +1.35 | +86 | +0.18 | +223 | +215 |
| | | | 25% | 10% | 10% | 25% | | 3% | 3% |

Big growth daughter of GAR Quantum leap with Top 3% Angus-on-Dairy \$Values, Top 4% WW, \$W, \$B, \$C, Top 5% YW, \$G

8A PINE TREE FIREPROOF 412
02-12-2024 Cow #*20918820 Tattoo: 412

| | | | | |
|------------------|----------------------------|-----|------|-----|
| *G Fireball 672 | *G A R Sure Fire 6404 | \$M | +69 | |
| *G A R Fireproof | *GB Anticipation 432 | \$W | +71 | 15% |
| 20370357 | *Chair Rock Sure Fire 6095 | \$F | +106 | 20% |
| | #*G A R Sure Fire | \$G | +112 | 1% |
| | +Chair Rock Progress 3005 | \$B | +218 | 2% |
| | | \$C | +352 | 2% |

| CED | BEPD | WEPD | YEPD | RADG | DMI | YH | MILK | HP | CEM |
|-----|------|------|------|------|-------|----|------|-------|-----|
| +13 | +3 | +72 | +132 | +29 | +1.54 | +4 | +28 | +15.2 | +7 |
| 10% | | 25% | 20% | | | | | 20% | |

| \$EN | SC | DOC | HS | CW | MARB | RE | FAT | \$AxH | \$AxJ |
|------|-----|-----|-----|-----|-------|-----|-------|-------|-------|
| -22 | +78 | +24 | +18 | +60 | +1.66 | +98 | -.023 | +243 | +222 |
| | | 25% | 10% | | 2% | 15% | 15% | 1% | 2% |

9 D&E RITA 0C1
03-01-2020 Cow #*19716911 Tattoo: 0C1

| | | | | |
|---------------------------|-----------------------------|-----|------|-----|
| *GB ND 5050 221 | #*G A R New Design 5050 | \$M | +58 | |
| #*D&E CC&7 5050 6A21 | *DRMCTR Objective 8304 | \$W | +58 | |
| 18418006 | #*SydGen C C & 7 | \$F | +90 | |
| ANGUS | D&E Total Power Grid 1A18 | \$G | +72 | 10% |
| *GB Prophet 546 | *#*G A R Prophet | \$B | +162 | 15% |
| #*D & E Rita Prophet 8B15 | *G A R 5050 New Design 3252 | \$C | +268 | 20% |
| 19099763 | *#V A R Generation 2100 | | | |
| | *#EF Rita 9416 | | | |

| CED | BEPD | WEPD | YEPD | RADG | DMI | MILK | HP | CEM |
|-----|------|------|------|------|-----|------|-------|-----|
| +1 | +2.9 | +65 | +115 | +25 | +96 | +26 | +13.5 | +1 |

| \$EN | SC | DOC | HS | CW | MARB | RE | FAT | \$AxH | \$AxJ |
|------|------|-----|-----|-----|------|-------|-------|-------|-------|
| -17 | -.07 | +21 | +60 | +45 | +88 | +1.02 | -.010 | +135 | +143 |
| | | | | | 15% | 3% | 20% | 15% | 10% |

Consigned by: Durand Cattle Company, Chip Durand
Expected 2/10/24 to sale date to GB Fireball son.

9A DURANDS MS GREATER GOOD OIL
12-25-2023 Cow #*20922802 Tattoo: 01L

| | | | | |
|---------------------|-------------------------|-----|------|-----|
| #*G A R Ashland | *G A R Early Bird | \$M | +55 | |
| *G A R Greater Good | *Chair Rock Ambush 1018 | \$W | +69 | 20% |
| 19362382 | *G A R Sure Fire A5008 | \$F | +100 | 25% |
| | #*G A R Sure Fire | \$G | +83 | 10% |
| | *G A R Mandate A2011 | \$B | +183 | 15% |
| | | \$C | +292 | 20% |

| CED | BEPD | WEPD | YEPD | RADG | DMI | YH | MILK | HP | CEM |
|-----|------|------|------|------|-------|-----|------|-------|-----|
| +6 | +2.4 | +78 | +138 | +29 | +1.53 | +9 | +26 | +12.6 | +3 |
| | | 15% | 15% | | | 15% | | | |

| \$EN | SC | DOC | HS | CW | MARB | RE | FAT | \$AxH | \$AxJ |
|------|-----|-----|-----|-----|-------|-------|-------|-------|-------|
| -29 | +25 | +20 | +40 | +58 | +1.09 | +1.04 | -.021 | +170 | +172 |
| | | | | | 20% | 10% | 15% | 15% | 15% |

3-in-1 with Heifer Calf



G A R Ashland - Grandsire of Lots 10A, 11A, 12A & 13A

10 D & E RITA PROPHET 8B15
 02-15-2018 Cow #19099763 Tattoo: 8B15

| | | | | |
|-------------------------|-----------------------------|-----|------|-----|
| #**G A R Prophet | #C R A Bextor 872 5205 608 | \$M | +70 | 25% |
| *GB Prophet 546 | +G A R Objective 1885 | \$W | +68 | 15% |
| 18367168 | *G A R 5050 New Design 3252 | \$F | +104 | 15% |
| ANGUS | +*G A R Daybreak 1610 | \$G | +83 | 3% |
| | #*Connealy Consensus 7229 | \$B | +187 | 4% |
| #*V A R Generation 2100 | +*Sandpoint Blackbird 8809 | \$C | +313 | 3% |
| *RMRK Rita 5928 | #TC Total 410 | | | |
| 18380953 | *EF Rita 9416 | | | |
| | G A R Retail Product 1712 | | | |

| CED | BEPD | WEPD | YEPD | RADG | DMI | MILK | HP | CEM |
|-----|------|------|------|------|-------|------|-------|-----|
| +2 | +3.1 | +76 | +131 | +26 | +1.34 | +27 | +15.6 | +1 |
| | | 10% | 10% | | | | 15% | |

| \$EN | SC | DOC | HS | CW | MARB | RE | FAT | \$AxH | \$AxJ |
|------|------|-----|-----|-----|-------|-------|--------|-------|-------|
| -23 | +4.1 | +28 | +63 | +61 | +1.11 | +1.06 | +0.003 | +154 | +172 |
| | | 10% | | 10% | 10% | 3% | | 10% | 3% |

10A DURANDS MS GREATER GOOD 815L
 12-10-2023 Cow 20922805 Tattoo: 815L

| | | | | |
|---------------------|-------------------------|-----|------|-----|
| #**G A R Ashland | *G A R Early Bird | \$M | +61 | |
| *G A R Greater Good | *Chair Rock Ambush 1018 | \$W | +75 | 10% |
| 19362382 | *G A R Sure Fire A5008 | \$F | +106 | 20% |
| | #**G A R Sure Fire | \$G | +89 | 10% |
| | *G A R Mandate A2011 | \$B | +195 | 10% |
| | | \$C | +314 | 10% |

| CED | BEPD | WEPD | YEPD | RADG | DMI | YH | MILK | HP | CEM |
|-----|------|------|------|------|-------|------|------|-------|-----|
| +6 | +2.5 | +84 | +146 | +30 | +1.72 | +1.1 | +27 | +13.6 | +3 |
| | | 10% | 10% | 25% | | 5% | | | |

| \$EN | SC | DOC | HS | CW | MARB | RE | FAT | \$AxH | \$AxJ |
|------|------|-----|-----|-----|-------|-------|--------|-------|-------|
| -32 | +4.9 | +24 | +41 | +66 | +1.20 | +1.06 | +0.014 | +176 | +183 |
| | | 25% | | 20% | 15% | 10% | 20% | 15% | 10% |

Greater Good daughter with extreme \$Values top 10% \$W, \$G, \$B & \$C

Consigned by: Durand Cattle Company, Chip Durand
 This Prophet granddaughter combines production, maternal and carcass. Top 4% or better for SG, \$B and \$C.
 Exposed 2/10/24 to sale date to GB Fireball son.

11 PINE TREE SUREFIRE RITA 7802
 09-08-2017 Cow #18991479 Tattoo: 7802

| | | | | |
|-----------------------------|----------------------------|-----|------|-----|
| #*Connealy In Sure 8524 | #*Mytty In Focus | \$M | +63 | |
| *Chair Rock 5050 G A R 8086 | Entrenea of Conanga 657 | \$W | +70 | 15% |
| ANGUS | +*G A R New Design 5050 | \$F | +82 | |
| | Chair Rock Grid Maker 2107 | \$G | +97 | 1% |
| #*G A R Prophet | #C R A Bextor 872 5205 608 | \$B | +179 | 10% |
| *Bridges Prophet 5116 | +G A R Objective 1885 | \$C | +295 | 10% |
| 18508989 | *Sitz Upward 307R | | | |
| | *G A R Objective 2345 | | | |

| CED | BEPD | WEPD | YEPD | RADG | DMI | MILK | HP | CEM |
|-----|------|------|------|------|-------|------|------|-----|
| +16 | -1.2 | +58 | +108 | +27 | +0.90 | +35 | +9.3 | +14 |
| | | 10% | | 25% | | 10% | | 5% |

| \$EN | SC | DOC | HS | CW | MARB | RE | FAT | \$AxH | \$AxJ |
|------|-------|-----|-----|-----|-------|-------|--------|-------|-------|
| -4 | +1.46 | +10 | +48 | +35 | +1.56 | +0.67 | +0.048 | +175 | +163 |
| | | 15% | | | 1% | | | 4% | 5% |

Consigned by: Durand Cattle Company, Chip Durand
 Calving ease female with maternal. Sure Fire sired female out of a Prophet daughter stemming from the Deer Valley Rita 0274 donor.
 Exposed 2/10/24 to sale date to GB Fireball son.

11A DURANDS MS GREATER GOOD 7802L
 12-29-2023 Cow 20922810 Tattoo: 7802L

| | | | | |
|---------------------|-------------------------|-----|------|-----|
| #**G A R Ashland | *G A R Early Bird | \$M | +58 | |
| *G A R Greater Good | *Chair Rock Ambush 1018 | \$W | +76 | 10% |
| 19362382 | *G A R Sure Fire A5008 | \$F | +95 | |
| | #**G A R Sure Fire | \$G | +96 | 4% |
| | *G A R Mandate A2011 | \$B | +192 | 10% |
| | | \$C | +307 | 10% |

| CED | BEPD | WEPD | YEPD | RADG | DMI | YH | MILK | HP | CEM |
|-----|------|------|------|------|-------|------|------|-------|-----|
| +13 | +4 | +75 | +135 | +30 | +1.50 | +1.9 | +31 | +10.5 | +10 |
| | | 20% | 15% | 25% | | 15% | 20% | | |

| \$EN | SC | DOC | HS | CW | MARB | RE | FAT | \$AxH | \$AxJ |
|------|-------|-----|-----|-----|-------|-------|--------|-------|-------|
| -23 | +1.02 | +15 | +34 | +53 | +1.43 | +1.87 | +0.009 | +188 | +178 |
| | | | 20% | | 5% | 25% | | 10% | 10% |

Calving ease Greater Good daughter with great carcass & maternal EPD's.

12 GB NOW LOOK 710
 08-30-2017 Cow #19081966 Tattoo: 710

| | | | | |
|-------------------------|-------------------------------|-----|------|-----|
| #*Connealy Sullivan 83A | Connealy Tobin | \$M | +64 | |
| *McKellar Now Look | *Breesha of Conanga 1251 | \$W | +76 | 5% |
| 16905775 | *JMc Pearl's Answer 8446 6465 | \$F | +105 | 15% |
| ANGUS | #*S A V Final Answer 0035 | \$G | +73 | 10% |
| | #*JMc Pearl Pride 6465 5289 | \$B | +179 | 10% |
| #*G A R Advance | #*G A R Progress | \$C | +296 | 10% |
| *GB Advance 556 | G A R 5050 New Design A84 | | | |
| 18383682 | *S S Objective T510 0T26 | | | |
| | +DRMCTR 111 Rita 6108 | | | |

| CED | BEPD | WEPD | YEPD | RADG | DMI | MILK | HP | CEM |
|-----|------|------|------|------|-------|------|-------|-----|
| +10 | +1.3 | +74 | +132 | +27 | +1.70 | +35 | +15.3 | +10 |
| | | 15% | 10% | 25% | | 10% | 15% | |

| \$EN | SC | DOC | HS | CW | MARB | RE | FAT | \$AxH | \$AxJ |
|------|-------|-----|-----|-----|-------|-------|--------|-------|-------|
| -29 | +1.41 | +13 | +52 | +63 | +0.97 | +0.78 | -0.014 | +155 | +166 |
| | | 15% | | 10% | 15% | 20% | 20% | 10% | 4% |

Consigned by: Durand Cattle Company, Chip Durand
 Calving ease female that combines production maternal and carcass. Now Look daughter that stems from the DRMCR 111 RITA 6108 Donor.
 Exposed 2/10/24 to sale date to GB Fireball son.

12A DURANDS MS KANSAS 710L
 10-27-2023 Cow 20922865 Tattoo: 710L

| | | | | |
|------------------|----------------------------|-----|------|-----|
| #**G A R Ashland | *G A R Early Bird | \$M | +59 | |
| *G A R Kansas | *Chair Rock Ambush 1018 | \$W | +73 | 15% |
| 19266637 | *Chair Rock Momentum 6057 | \$F | +103 | 20% |
| | #*G A R Momentum | \$G | +96 | 4% |
| | *Chair Rock Sure Fire 4060 | \$B | +199 | 10% |
| | | \$C | +317 | 10% |

| CED | BEPD | WEPD | YEPD | RADG | DMI | YH | MILK | HP | CEM |
|-----|------|------|------|------|-------|------|------|-------|-----|
| +12 | +6 | +73 | +130 | +27 | +1.74 | +1.8 | +30 | +12.4 | +10 |
| | | 25% | 20% | | | 25% | 25% | | |

| \$EN | SC | DOC | HS | CW | MARB | RE | FAT | \$AxH | \$AxJ |
|------|-------|-----|-----|-----|-------|-------|--------|-------|-------|
| -24 | +1.33 | +16 | +32 | +59 | +1.38 | +1.96 | -0.007 | +200 | +204 |
| | | 25% | 20% | | 10% | 15% | | 10% | 5% |

Kansas Daughter with great combined EPD Top 20% with a +320 \$C, Top 5% \$B.

3-in-1 with Heifer Calf



DRMCTR III Rita 6108 - Granddam of Lot 13

13 GB NOW LOOK 702
08-23-2017 Cow #*19081964 Tattoo: 702

#*Connealy Sullivan 83A Connealy Tobin
*McKellar Now Look *Breesha of Conanga 1251
16905775 *JMc Pearl's Answer 8446 6465 #S A V Final Answer 0035
#JMc Pearl Pride 6465 5289
ANGUS 6S #S S Objective T510 0T26 #S S Traveler 6807 T510
**DRMCTR Objective 8304 S S Miss Rita R011 7R8
15986090 +DRMCTR III Rita 6108 #**Rito III of 2536 Rito 616
+DRMCTR 2908s Design 2B02

| | |
|-----|----------|
| \$M | +56 |
| \$W | +53 |
| \$F | +91 |
| \$G | +60 20% |
| \$B | +152 25% |
| \$C | +253 |

| CED | BEPD | WEPD | YEPD | RADG | DMI | MILK | HP | CEM |
|-----|------|------|------|------|-------|------|-------|-----|
| +9 | +1.8 | +73 | +136 | +31 | +1.27 | +14 | +14.5 | +8 |
| 25% | | 15% | 10% | 10% | | | 20% | |

| \$EN | SC | DOC | HS | CW | MARB | RE | FAT | \$AxH | \$AxJ |
|------|------|-----|-----|------|------|------|-------|-------|-------|
| -23 | +4.4 | +23 | +91 | +4.4 | +82 | +5.7 | +0.14 | +141 | +120 |
| | | 20% | | | 20% | | | 15% | 15% |

Consigned by: Durand Cattle Company, Chip Durand
Now Look daughter out of the Objective 8J04 cow that stems from the DRMCR 111 RITA 6108 Donor.
Exposed 2/10/24 to sale date to GB Fireball son.

13A DURANDS MS GREATER GOOD 702L
12-12-2023 Cow 20922809 Tattoo: 702L

#*G A R Ashland *G A R Early Bird
*G A R Greater Good *Chair Rock Ambush 1018
19362382 *G A R Sure Fire A5008 #**G A R Sure Fire
*G A R Mandate A2011

| | |
|-----|----------|
| \$M | +55 |
| \$W | +66 |
| \$F | +100 25% |
| \$G | +78 15% |
| \$B | +178 20% |
| \$C | +286 20% |

| CED | BEPD | WEPD | YEPD | RADG | DMI | YH | MILK | HP | CEM |
|-----|------|------|------|------|-------|------|------|-------|-----|
| +10 | +1.9 | +82 | +149 | +32 | +1.69 | +1.8 | +20 | +13.1 | +7 |
| 20% | | 10% | 5% | 15% | | 25% | | | |

| \$EN | SC | DOC | HS | CW | MARB | RE | FAT | \$AxH | \$AxJ |
|------|------|-----|-----|-----|-------|-------|--------|-------|-------|
| -32 | +5.1 | +21 | +55 | +58 | +1.06 | +1.82 | -0.009 | +170 | +154 |
| | | | | | 20% | | | 25% | 15% |

Calving ease Greater Good sire heifer with great production and carcass EPD's.



GAR Greater Good - Sire of Lots 10A, 11A & 13A

3-in-1 with Bull Calf



Pine Tree Lucy 2178 with calf - Lots 14 & 14A

14 PINE TREE LUCY 2178
02-16-2022 Cow *20581366 Tattoo: 2178

#*G A R Sure Fire #*Connealy In Sure 8524
*EXAR Infallible 8354B +Chair Rock 5050 G A R 8086
19079890 *EXAR Rita 6106 #**EXAR Prophet 4071
ANGUS 6S #**EXAR Rita 6592 #**EXAR Monumental 6056B
*TMR Lucy H032 #**EXAR Monumental F008 #**EXAR Monumental 6056B
19689208 *TMR Lucy F023 #*Montana Rita B026
#**Baldridge Colonel C251
#**Texas Lucy 4082

| | |
|-----|----------|
| \$M | +57 |
| \$W | +74 15% |
| \$F | +86 |
| \$G | +79 15% |
| \$B | +165 25% |
| \$C | +271 |

| CED | BEPD | WEPD | YEPD | RADG | DMI | MILK | HP | CEM |
|-----|------|------|------|------|-----|------|-------|-----|
| +7 | +1.7 | +75 | +122 | +25 | +65 | +30 | +10.9 | +12 |
| | | 20% | | | 20% | 25% | | 15% |

| \$EN | SC | DOC | HS | CW | MARB | RE | FAT | \$AxH | \$AxJ |
|------|------|-----|-----|-----|-------|------|-------|-------|-------|
| -31 | +4.4 | +13 | +17 | +47 | +1.16 | +5.8 | +0.04 | +118 | +84 |
| | | | 5% | | 15% | | | | |

Consigned by: Pine Tree Ranch, Enyart Mitchell
Nice Infallible first calf heifer. Nice February bull calf at side by GAR Fireproof.
Raise your own great herd sire.

14A PINE TREE FIREPROOF 409
02-08-2024 Bull *20918803 Tattoo: 409

*GB Fireball 672 *G A R Sure Fire 6404
*G A R Fireproof *GB Anticipation 432
20370357 *Chair Rock Sure Fire 6095 #**G A R Sure Fire
*Chair Rock Progress 3005

| | |
|-----|----------|
| \$M | +60 |
| \$W | +76 10% |
| \$F | +113 10% |
| \$G | +105 2% |
| \$B | +218 2% |
| \$C | +343 2% |

| CED | BEPD | WEPD | YEPD | RADG | DMI | YH | MILK | HP | CEM |
|-----|------|------|------|------|-----|----|------|-------|-----|
| +15 | +1 | +69 | +123 | +29 | +73 | +5 | +38 | +10.5 | +12 |
| 3% | 25% | | | 25% | 25% | | 3% | | 20% |

| \$EN | SC | DOC | HS | CW | MARB | RE | FAT | \$AxH | \$AxJ |
|------|------|-----|-----|-----|-------|------|-------|-------|-------|
| -29 | +9.9 | +17 | +12 | +63 | +1.70 | +6.4 | +0.35 | +220 | +176 |
| | | | 3% | 20% | 1% | | | 3% | 10% |

Fireproof son with 14 EPDs in the top 10% of the breed.



G A R Fireproof - Sire of Lot 14A

Calf 3-in-1 with Bull Calf



G A R Sure Fire - Sire of Lot 15



Basin Payweight 1682 - Grand sire of Lots 16 & 17

15 GB SURE FIRE 738
09-11-2017 Cow *19107280 Tattoo: 738

#*G A R Sure Fire
17328461 *Chair Rock 5050 G A R 8086

#*Connealy In Sure 8524
*Mytty In Focus
Entreena of Conanga 657
#*G A R New Design 5050
Chair Rock Grid Maker 2107
#*Connealy Sullivan 83A
*JMc Pearl's Answer 8446 6465
#*B/R Ambush 28
#*G A R Future Direction 1316

| | | |
|-----|------|-----|
| \$M | +54 | |
| \$W | +58 | |
| \$F | +123 | 2% |
| \$G | +68 | 15% |
| \$B | +191 | 3% |
| \$C | +302 | 4% |

| CED | BEPD | WEPD | YEPD | RADG | DMI | MILK | HP | CEM |
|-----|------|------|------|------|-----|------|-------|-----|
| +2 | +3.3 | +71 | +126 | +29 | +93 | +25 | +14.0 | +6 |
| | | 15% | 15% | 15% | | | 25% | |

| \$EN | SC | DOC | HS | CW | MARB | RE | FAT | \$AxH | \$AxJ |
|------|-----|-----|-----|-----|------|-----|------|-------|-------|
| -29 | +15 | +27 | +32 | +68 | +87 | +93 | +012 | +172 | +163 |
| | | 10% | 15% | 5% | 20% | 10% | | 4% | 5% |

Consigned by: Durand Cattle Company, Chip Durand
Combination female with great production, carcass and maternal EPDs. Sure Fire sired female out of a Now Look daughter. Top 3% \$B and 4% \$C. Exposed 2/10/24 to sale date to GB Fireball son.

17 WAGGONER 8B149 OF 6036 PB
11-21-2017 Cow **19055839 Tattoo: 8B149

#*TEX Playbook 5437
18414912 *Rita 1C43 of 9M26 Complete

#*Basin Payweight 1682
#*Basin Payweight 0065
21AR O Lass 7017
#*Summitcrest Complete 1P55
*Rita 9M26 of Rita 5F56 Pred
#Connealy Lead On
Altune of Conanga 6104
#Jauer 353 Traveler 589 27
Rosie of Conanga 169

PCT Rosie's Jauer 6036
15749280 #JMc Rosie's Jauer 5351 2521

| | | |
|-----|------|----|
| \$M | +92 | 2% |
| \$W | +76 | 5% |
| \$F | +79 | |
| \$G | +44 | |
| \$B | +124 | |
| \$C | +253 | |

| CED | BEPD | WEPD | YEPD | RADG | DMI | MILK | HP | CEM |
|-----|------|------|------|------|-------|------|-------|-----|
| +10 | +9 | +66 | +120 | +24 | +1.59 | +36 | +15.5 | +12 |
| 20% | | | 20% | | | 5% | 15% | 15% |

| \$EN | SC | DOC | HS | CW | MARB | RE | FAT | \$AxH | \$AxJ |
|------|-------|-----|-----|-----|------|-----|-------|-------|-------|
| -7 | +1.08 | +23 | +78 | +38 | +43 | +70 | -.012 | +108 | +102 |
| | | 20% | | | | 25% | 20% | | 25% |

Consigned By: MAG Angus Ranch, Marc Grabert
Excellent maternal female sired by TEX Playbook and out of the Rosie's Jauer 6036 cow. Top 1% \$M, 5% \$W and Milk. Exposed to 44 Monumental 1212 (20328739) March 15th to sale date. 17A: Bull, DOB 1/25/24, sired by 44 Monumental 1212.

15A DURANDS FIREBALL 738M
01-28-2024 Bull 20922103 Tattoo: 738M

*GB Fireball 672 *G A R Sure Fire 6404

***JBBF Fireball 0116**
20061061 *Hoffman Henrietta Pride 4668#A A R Ten X 7008 S A

*Sitz Henrietta Pride X10

| | | |
|-----|------|-----|
| \$M | +50 | |
| \$W | +68 | 25% |
| \$F | +126 | 3% |
| \$G | +90 | 5% |
| \$B | +216 | 2% |
| \$C | +330 | 4% |

| CED | BEPD | WEPD | YEPD | RADG | DMI | YH | MILK | HP | CEM |
|-----|------|------|------|------|-------|------|------|-------|-----|
| +1 | +4.3 | +86 | +151 | +34 | +1.49 | +1.0 | +27 | +12.5 | +6 |
| | | 5% | 5% | 4% | | | 10% | | |

| \$EN | SC | DOC | HS | CW | MARB | RE | FAT | \$AxH | \$AxJ |
|------|-------|-----|-----|-----|-------|-------|--------|-------|-------|
| -43 | +1.45 | +24 | +35 | +77 | +1.30 | +1.90 | +0.012 | +178 | +163 |
| | | 25% | 25% | 5% | 10% | 20% | | 15% | 15% |

GB Fireball grandson with growth & carcass values, Top 5% WW YW CW & \$G, 4% \$C, 2% \$B.

18 PHF BLACKBIRD 7002
10-07-2017 Cow 19098619 Tattoo: 7002

#TC Vance 011 #Connealy Right Answer 746

***H Vance 3824**
17786712 #Sitz Henrietta Pride 630T

***S A V First Class 0207**
#S A V Duke Girl 7348
#Boyd New Day 8005
S A V Blackbird 1082

| | | |
|-----|------|-----|
| \$M | +53 | |
| \$W | +68 | 15% |
| \$F | +90 | |
| \$G | +22 | |
| \$B | +112 | |
| \$C | +198 | |

| CED | BEPD | WEPD | YEPD | RADG | DMI | MILK | HP | CEM |
|-----|------|------|------|------|-----|------|------|-----|
| +5 | +1.8 | +62 | +105 | +23 | +80 | +33 | +5.5 | +1 |
| | | | | | | 15% | | |

| \$EN | SC | DOC | HS | CW | MARB | RE | FAT | \$AxH | \$AxJ |
|------|-----|-----|-----|-----|------|-----|-------|-------|-------|
| -8 | +49 | +9 | +57 | +44 | +01 | +65 | -.005 | +81 | +83 |
| | | | | | | | 25% | | |

Consigned By: MAG Angus Ranch, Marc Grabert
Paternal Vance 011 granddaughter stemming from the Blackbird cow family. Exposed to 44 Monumental 1212 (20328739) March 15th to sale date. 18A: Bull, DOB 1/21/24, sired by 44 Monumental 1212.

16 MAG TEXAS PLAYBOOK ITB2 [AMF-GAF-DZF-DMF-MHF-OHF-OSF-RDF]
09-23-2021 Cow **20609905 Tattoo: 1TP2

#*Basin Payweight 1682
#*Basin Payweight 0065
21AR O Lass 7017
#*Summitcrest Complete 1P55
*Rita 9M26 of Rita 5F56 Pred
#Connealy Final Product
#Sitz Pride 88T
#*S A V Connection
#S A V F Forever Lady 260

#*TEX Playbook 5437
18414912 *Rita 1C43 of 9M26 Complete

***Sitz Top Product 709A**
#B&M Forever lady 515
B&M Forever Lady 8520

| | | |
|-----|------|-----|
| \$M | +99 | 1% |
| \$W | +74 | 15% |
| \$F | +67 | |
| \$G | +46 | |
| \$B | +114 | |
| \$C | +247 | |

| CED | BEPD | WEPD | YEPD | RADG | DMI | MILK | HP | CEM |
|-----|------|------|------|------|-------|------|-------|-----|
| +10 | +1.3 | +60 | +100 | +17 | +1.42 | +33 | +13.0 | +14 |
| 20% | | | | | | 10% | | 5% |

| \$EN | SC | DOC | HS | CW | MARB | RE | FAT | \$AxH | \$AxJ |
|------|-------|-----|-----|-----|------|-----|-------|-------|-------|
| +12 | +0.04 | +18 | +66 | +36 | +63 | +26 | +0.16 | +64 | +23 |
| 5% | | | | | | | | | |

Consigned By: MAG Angus Ranch, Marc Grabert
Excellent maternal female with a Top 1% \$M EPD. Sired by TEX Playbook and out of a Top Product 709A daughter that stems from the Forever Lady cow family. Energy efficient female with a +12 \$EN top 5% of the breed. Exposed to 44 Monumental 1212 (20328739) March 15th to sale date. 16A: Bull, DOB 1/13/24, sired by 44 Monumental 1212.

19 SRF PRINCESS SABLE S726
09-29-2017 Cow 18980270 Tattoo: S726

#*S A V Connection
S A V F Forever Lady 4087
#TC Gridiron 258
Erica of Ellston V65
#S A V Focus of E R
Mytty Countess 906
Pleasant Valley Unique M5
#Pleasant Valley Dewy Lass C7

***C F Hoover Dam 8241**
17316804 #Erica of Ellston C124

#Mytty In Focus
#P V Princess Sable S1
15320425 P V Dewy Princess P18

| | | |
|-----|------|--|
| \$M | +56 | |
| \$W | +50 | |
| \$F | +81 | |
| \$G | +48 | |
| \$B | +129 | |
| \$C | +223 | |

| CED | BEPD | WEPD | YEPD | RADG | DMI | MILK | HP | CEM |
|-----|------|------|------|------|-----|------|------|-----|
| +4 | +1.7 | +56 | +93 | +22 | +26 | +19 | +9.1 | +9 |
| | | | | | 15% | | | |

| \$EN | SC | DOC | HS | CW | MARB | RE | FAT | \$AxH | \$AxJ |
|------|-------|-----|-----|-----|------|-----|-------|-------|-------|
| +0 | +1.99 | +20 | +51 | +33 | +61 | +41 | +0.10 | +43 | +16 |
| 25% | 2% | | | | | | | | |

Consigned By: MAG Angus Ranch, Marc Grabert
Sired by a CC&7 son and out of a Mytty In Focus daughter. Exposed to 44 Monumental 1212 (20328739) March 15th to sale date. 19A: Bull, DOB 1/23/24, sired by 44 Monumental 1212.

3-in-1 with Bull Calf

| | | | | | | | | | |
|-------------------------------------|------------------------------------------------|--------------------------------------------------------------------------------------------------|---------------------------------------------------------------------------|--------------|-------------|-------------|--------------|--------------|--------------|
| 20 | SRF JEWEL S659 OF 151 | 09-02-2016 | Cow 18565813 | Tattoo: S659 | | | | | |
| #WAR Alliance 9126 6006 13433023 | #Sitz Alliance 6595 WAR Bando 6006 598 4053 | #Sitz Traveler 8180 #Sitz Barbaramere Jet 2698 #Bon View Bando 598 War Ext 4053 22 2107 | \$M +35 \$W +50 \$F +108 10% \$G +46 \$B +154 25% \$C +235 | | | | | | |
| LAF Jewel 151 17087694 | LAF Justice 21T C L Jewel 13P | #ER Justice N013 CDAR Susie 568 G W Direct 4331 Grandview Womack Jewel 2609 | | | | | | | |
| CED | BE PD | WEPD | YEPD | RADG | DMI | MILK | HP | CEM | |
| +0 | +3.3 | +64 | +123 20% | +30 10% | +1.12 | +27 | +9.1 | +4 | |
| \$EN | SC | DOC | HS | CW | MARB | RE | FAT | \$AxH | \$AxJ |
| -34 | +1.12 | +18 | +56 | +53 25% | +48 | +64 | -0.10 20% | +74 | +98 25% |

Consigned By: MAG Angus Ranch, Marc Grabert
Sitz Alliance 6595 granddaughter.
Exposed to 44 Monumental 1212 (20328739) March 15th to sale date.
20A: Bull, DOB 12/31/24, sired by 44 Monumental 1212.

| | | | | | | | | | |
|--------------------------------------|----------------------------------------------------------------------|--------------------------------------------------------------------------------------------------------|------------------------------------------------------------------|-------------|-------------|-------------|------------|--------------|--------------|
| 21 | TT MISS EVERELDA ENTENSE 172 | 02-13-2015 | Cow 18213427 | Tattoo: 172 | | | | | |
| #Connealy Capitalist 028 16752262 | #S A V Final Answer 0035 Prides Pita of Conanga 8821 | #Sitz Traveler 8180 S A V Emulous 8145 #C R A Bextor 872 5205 608 Prides Trav of Conanga 6499 | \$M +42 \$W +56 \$F +80 \$G +26 \$B +106 \$C +179 | | | | | | |
| ISOK | #Bon View New Design 878 TT Miss Everelda EntenseW225 17137175 | #B/R New Design 036 Bon View Gammer 85 #*Rito 6EM3 of 4L1 Emblazon +Three Trees Everelda 1806 | | | | | | | |
| CED | BE PD | WEPD | YEPD | RADG | DMI | MILK | HP | CEM | |
| +14 3% | -1.7 4% | +46 | +85 | +21 25% | +4.7 10% | +35 | +11.6 | +9 | |
| \$EN | SC | DOC | HS | CW | MARB | RE | FAT | \$AxH | \$AxJ |
| -12 | +4.4 | +0 | +4.6 | +32 | +2.6 | +3.5 | +0.49 | +77 | +63 |

Consigned By: MAG Angus Ranch, Marc Grabert
Sired by a Final Answer 0035 son and out of a New Design 878 daughter.
Calving ease female with maternal. Top 10% Milk.
Exposed to 44 Monumental 1212 (20328739) March 15th to sale date.
21A: Bull, DOB 1/18/24, sired by 44 Monumental 1212.

| | | | | | | | | | |
|--------------------------------------|---------------------------------------------------|----------------------------------------------------------------------------------------------------------------|-----------------------------------------------------------------|-------------|-------------|-------------|------------|--------------|--------------|
| 22 | LS 403 OF 406 904 BANDO 1961 [MP-DOF-05] | 02-17-2014 | Cow 17907531 | Tattoo: 403 | | | | | |
| LS 904 of 470 Bando 1961 16419674 | #*H S A F Bando 1961 LS 470 of 187 2382 | #S A F 598 Bando 5175 +J K S Miss Cheyenne 196 GRC Paul 2382 of 1059 616 GRC Evergreen 187 1305 7168 | \$M +42 \$W +36 \$F +47 \$G +44 \$B +90 \$C +159 | | | | | | |
| LS 406 of 2482 7709 14758149 | Oak Hollow 7709 of 1318 1118 RRG 2482 17F 1090 | Oak Hollow Troubadour 1118 Oak Hollow Blackcap 1318 Mengs Emulation 473 17F R R G Eurotia 1090 of 036 | | | | | | | |
| CED | BE PD | WEPD | YEPD | RADG | DMI | MILK | HP | CEM | |
| +3 | +2.4 | +43 | +72 | +16 20% | +3.2 | +20 | +8.9 | +6 | |
| \$EN | SC | DOC | HS | CW | MARB | RE | FAT | \$AxH | \$AxJ |
| +0 25% | +4.7 | +9 | +27 10% | +4 | +7.1 | -1.7 | +0.30 | -100 | -104 |

Consigned By: MAG Angus Ranch, Marc Grabert
Bando 1961 granddaughter.
Exposed to 44 Monumental 1212 (20328739) March 15th to sale date.
22A: Bull, DOB 2/19/24, sired by 44 Monumental 1212.



Dollar value indexes, or \$Values, are a tool used to select for several traits at once based on a specific breeding objective. An economic index approach takes into account genetic and economic values as well as the relationships between traits to select for profit.

Maternal Weaned Calf Value (\$M), an index expressed in dollars per head, predicts profitability differences in progeny due to genetics from conception to weaning. Increased selection pressure on \$M aims to decrease overall mature cow size and improve foot structure and fertility while maintaining weaning weights consistent with today's production.

Weaned Calf Value (\$W), an index expressed in dollars per head, provides the expected difference in future progeny preweaning performance from birth to weaning. Over time, increased selection pressure on \$W will increase weaning and maternal milk traits while also continuing to increase mature cow size.

Feedlot Value (\$F), an index expressed in dollars per head, is the expected average difference in future progeny performance for postweaning merit compared to progeny of other sires. The underlying objective assumes commercial producers will retain ownership of cattle through the feedlot phase and sell fed cattle on a carcass weight basis with no considerations of premiums or discounts for quality and yield grade.

Grid Value (\$G), an index expressed in dollars per carcass, is the expected average difference in future progeny performance for carcass grid merit, including quality and yield grade attributes, compared to progeny of other sires.

Beef Value (\$B), an index expressed in dollars per carcass, facilitates simultaneous multi-trait genetic selection for feedlot and carcass merit. \$B represents the expected average differences in the progeny postweaning performance and carcass value compared to progeny of other sires. This index assumes commercial producers wean all male and female progeny, retain ownership of these animals through the feedlot phase and market these animals on a quality-based carcass grid.

Combined Value (\$C), an index expressed in dollars per head, includes all traits that make up both \$M and \$B with the objective that commercial producers will replace 20% of their breeding females per year with replacement heifers retained within their own herd. The remaining cull heifer and steer progeny are then assumed to be sent to the feedlot where the producers retain ownership of those cattle and eventually sell them on a quality-based carcass merit grid.

EPDS DIRECTLY INCORPORATED INTO EACH \$VALUE

| TRAIT | MATERNAL | | TERMINAL | | | |
|-------|----------|-----|----------|-----|-----|-----|
| | \$M | \$W | \$F | \$G | \$B | \$C |
| CED | ✓ | | | | | ✓ |
| BW | | ✓ | | | | |
| WW | ✓ | ✓ | | | | ✓ |
| YW | | | ✓ | | ✓ | ✓ |
| CEM | ✓ | | | | | ✓ |
| Milk | ✓ | ✓ | | | | ✓ |
| MW | ✓ | ✓ | | | | ✓ |
| DOC | ✓ | | | | | ✓ |
| HP | ✓ | | | | | ✓ |
| Claw | ✓ | | | | | ✓ |
| Angle | ✓ | | | | | ✓ |
| DMI | | | ✓ | | | ✓ |
| CW | | | ✓ | ✓ | ✓ | ✓ |
| RE | | | | ✓ | ✓ | ✓ |
| Marb | | | | ✓ | ✓ | ✓ |
| Fat | | | | ✓ | ✓ | ✓ |



Fall Calving Bred Females

23 DIXIE RITA 9538
 09-10-2019 Cow #*19825206 Tattoo: 9538

| | | | | |
|----------------------------------|--------------------------|-----|------|-----|
| *Silveiras Conversion 8064 | #*BT Crossover 758N | \$M | +77 | 15% |
| #*BUBS Southern Charm AA31 | +EXG Saras Dream S609 R3 | \$W | +76 | 5% |
| 17853196 *Hickory Hill Erica 009 | #*Connealy Stimulus 8419 | \$F | +96 | |
| ANGUS | Hickory Hill Erica TA32 | \$G | +78 | 5% |
| #*A A R Ten X 7008 S A | #*Mytty In Focus | \$B | +174 | 10% |
| *FF Rita 5X49 of M721 Ten X | #A A R Lady Kelton 5551 | \$C | +303 | 4% |
| 18236428 +G A R Daybreak M721 | #MCC Daybreak | | | |
| | +G A R Objective 2827 | | | |



Dixie Rita 9538 - Lot 23

| CED | BEPD | WEPD | YEPD | RADG | DMI | MILK | HP | CEM |
|-----|------|------|------|------|-------|------|-------|-----|
| +10 | +3 | +68 | +114 | +22 | +1.08 | +31 | +11.6 | +9 |
| 20% | | 25% | | | | 20% | | |

| \$EN | SC | DOC | HS | CW | MARB | RE | FAT | \$AxH | \$AxJ |
|------|-------|-----|-----|-----|-------|-------|--------|-------|-------|
| -7 | +1.69 | +18 | +59 | +56 | +1.01 | +1.14 | +0.007 | +185 | +176 |
| 20% | 10% | | | 20% | 10% | 2% | | 3% | 3% |

Consigned by: Dixie Farms Angus, Bob Burford
 Powerful, deep bodied, daughter of the popular ABS featured sire and phenotypic favorite, Bub's Southern Charm and descends from the influential herd sire dam GAR Daybreak M721. Top 2% RE, Top 2% and 3% Angus-on-Dairy \$Values, Top 4% \$C, Top 5% SCR, \$W, \$G with 15 EPD's and \$Values in the top 25%. Bred AI 12/13/2023 to the \$500,000 ST Genetics and Select Sires feature, Connealy Craftsmen, checked safe and due 9/21/2024

24 DIXIE RITA 9035
 02-08-2019 Cow #*19634559 Tattoo: 9035

| | | | | |
|--------------------------------|-----------------------------|-----|------|-----|
| #*Basin Payweight 0065 | #Vermilion Payweight 3847 | \$M | +88 | 3% |
| #*Basin Payweight 1682 | +Basin Lucy 3829 | \$W | +65 | 25% |
| 17038724 2IAR O Lass 7017 | #HARB Pendleton 765 J H | \$F | +110 | 10% |
| ANGUS | 2IAR O Lass F24A | \$G | +29 | |
| #*EXAR Upshot 0562B | #*Sitz Upward 307R | \$B | +139 | |
| *SJH Upshot of 6108 3499 | #*EXAR Barbara T020 | \$C | +268 | 20% |
| 17807747 +DRMCTR III Rita 6108 | #*Rito III of 2536 Rito 616 | | | |
| | +DRMCTR 2908s Design 2B02 | | | |



Dixie Rita 9035 - Lot 24

| CED | BEPD | WEPD | YEPD | RADG | DMI | MILK | HP | CEM |
|-----|------|------|------|------|------|------|-------|-----|
| +6 | +2.3 | +67 | +119 | +26 | +7.5 | +23 | +10.8 | +12 |
| | | 25% | 25% | | | | | 15% |

| \$EN | SC | DOC | HS | CW | MARB | RE | FAT | \$AxH | \$AxJ |
|------|------|-----|-------|-----|------|------|--------|-------|-------|
| +7 | -.05 | +26 | +1.02 | +56 | +2.8 | +5.1 | +0.050 | +113 | +90 |
| 15% | | 10% | | 20% | | | | 25% | |

Consigned by: Dixie Farms Angus, Bob Burford
 Rita 9035 is a herd sire producing daughter of the legendary foundation Angus Sire, Basin Payweight 1682 and the proven Dixie Farms Angus cornerstone donor, SJH Upshot of 6108 3499, who recorded ultrasound ratios of 29@ 103 for IMF and 29@ 101 for ribeye. 9035 ranks top 3% \$Maternal Value Index and top 15% \$EN. She was bred 12/6/2023 to Kenny Rogers and checked safe, due 9/14/2024

25 DIXIE RITA 9087
 03-27-2019 Cow #*19631977 Tattoo: 9087

| | | | | |
|-------------------------------------|---------------------------|-----|------|-----|
| *Silveiras Conversion 8064 | #*BT Crossover 758N | \$M | +57 | |
| *Byergo Black Magic 3348 | +EXG Saras Dream S609 R3 | \$W | +74 | 10% |
| 17803074 *Byergo Elia Cupcake 5900 | Byergo Picasso | \$F | +105 | 15% |
| ANGUS | +Byergo Miss Cupcake 3600 | \$G | +67 | 15% |
| #*Sitz Upward 307R | #*Connealy Onward | \$B | +172 | 10% |
| *V A R Rita 0320 | *Sitz Henrietta Pride 81M | \$C | +280 | 15% |
| 16704616 +G A R 1407 New Design 523 | #Bon View New Design 1407 | | | |
| | +G A R Precision 819 | | | |



Dixie Rita 9087 - Lot 25

| CED | BEPD | WEPD | YEPD | RADG | DMI | MILK | HP | CEM |
|-----|------|------|------|------|-------|------|-------|-----|
| +6 | +3.6 | +89 | +154 | +30 | +1.84 | +26 | +10.2 | +3 |
| | | 1% | 2% | 10% | | | | |

| \$EN | SC | DOC | HS | CW | MARB | RE | FAT | \$AxH | \$AxJ |
|------|-------|-----|-----|-----|------|-----|-------|-------|-------|
| -36 | +1.52 | +22 | +72 | +68 | +78 | +96 | -.023 | +85 | +108 |
| | 10% | 25% | | 5% | 25% | 5% | 10% | | 20% |

Consigned by: Dixie Farms Angus, Bob Burford
 Dixie Rita 9087 is a high performance production cow that combines the strength and stature of Byergo Black Magic with the proven Dixie Farms Angus donor VAR 0320 who produced the top selling bulls at the 2017, 2018 and 2019 Louisiana Angus Association annual bull sales. Top 1% WW, YH, Top 2% YW, MH, Top 5% CW, RE with 18 EPD's and \$Values in the top 25% of the breed. She has production ratios of 2@ 113 WW, 2@ 112 YW, 1@ 110 IMF, 1@ 104 RE. She was AI bred 12/6/2023 to Baldrige Heat Seeker and checked safe, due 9/14/2024

26 DIXIE ELBA 9520
 09-05-2019 Cow #*19825751 Tattoo: 9520

| | | | | |
|-------------------------------|------------------------------|-----|------|-----|
| #*Jindra Acclaim | *Jindra 3rd Dimension | \$M | +53 | |
| *Stevenson Big League 70749 | +Jindra Blackbird Lassy 1111 | \$W | +75 | 10% |
| 18836113 *RL 9061 Birdie 3102 | #*S A V Thunderbird 9061 | \$F | +126 | 2% |
| ANGUS | #*RL 0145 Image 102 | \$G | +45 | |
| #*Sitz Top Game 561X | #*GDAR Game Day 449 | \$C | +171 | 10% |
| *EXAR Elba 4017 | #*Sitz Pride 88T | | | |
| 17739783 +EXAR Elba 2121 | #*Connealy Consensus 7229 | | | |
| | +Silveiras Elba 7532 | | | |



Dixie Rita 9520 - Lot 26

| CED | BEPD | WEPD | YEPD | RADG | DMI | MILK | HP | CEM |
|-----|------|------|------|------|-------|------|-------|-----|
| +7 | +3.1 | +85 | +153 | +33 | +1.78 | +34 | +15.8 | +5 |
| | | 2% | 2% | 3% | | 10% | 10% | |

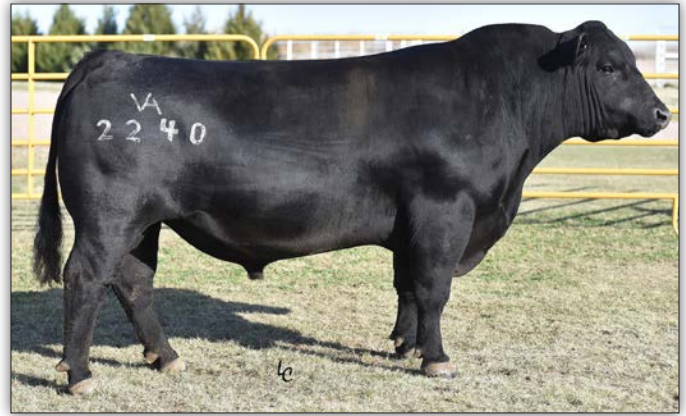
| \$EN | SC | DOC | HS | CW | MARB | RE | FAT | \$AxH | \$AxJ |
|------|------|-----|-----|-----|------|------|--------|-------|-------|
| -49 | +3.4 | +9 | +85 | +78 | +5.1 | +6.5 | +0.023 | +113 | +110 |
| | | | | 1% | | | | 25% | 20% |

Consigned by: Dixie Farms Angus, Bob Burford
 Dixie Rita 9520 is an attractive daughter of the Top selling heifer of the 2016 Louisiana Angus Association Female Sale, EXAR Rita 4017 and the Express Ranches herd sire, Stevenson Big League. Top 1% PAP, Top 2% WW, YW, MW, CW, \$Feedlot, Top 3% RADG. She has 15 EPD's and \$Values in the top 25%. Bred 12/13/2023 to Baldrige Heat Seeker, checked safe and due to calve 9/21/2024

Fall Calving Bred Females



Baldridge Alternative E125 - Sire of Lot 27



V A R Discovery 2240 - Sire of Lot 28

27 DIXIE RITA 0615
12-15-2020 Cow *20378538 Tattoo: 0615

Poss Easy Impact 0119 #Poss Total Impact 745
****Baldridge Alternative E125** Poss Elmaretta 736
 18837398 Baldridge Blackbird A030 #Hoover Dam
 #**Werner War Party 2417 Baldridge Blackbird X89
 #**V A R Reserve 1111 #Connealy Onward
 #BAAR USA Lady Jaye 489
 #G A R Predestined
 G A R 1407 New Design 1942

| | | |
|-----|------|-----|
| \$M | +58 | |
| \$W | +58 | |
| \$F | +98 | 25% |
| \$G | +81 | 4% |
| \$B | +178 | 10% |
| \$C | +289 | 10% |

| CED | BEPD | WEPD | YEPD | RADG | DMI | MILK | HP | CEM |
|-----|------|------|------|------|-------|------|-------|-----|
| +5 | +2.7 | +72 | +119 | +2.0 | +1.26 | +18 | +13.3 | +14 |
| | | 15% | 25% | | | | | 5% |

| \$EN | SC | DOC | HS | CW | MARB | RE | FAT | \$AxH | \$AxJ |
|------|-----|-----|-----|-----|-------|-------|-------|-------|-------|
| -21 | +32 | +27 | +20 | +55 | +1.06 | +1.02 | -0.08 | +180 | +173 |
| | | 10% | 4% | 20% | 10% | 3% | 25% | 3% | 3% |

Consigned by: Dixie Farms Angus, Bob Burford
 Dixie Rita 0615 is a balanced trait production cow with 18 EPD's or \$Values in the top 25% of the breed. Top 3% RE and \$Angus x Holstein, Top 4% Hair Shed, \$Grid and \$Angus x Jersey, Top 5% CEM, PAP. AI bred 1/3/2024 to Baldridge Heat Seeker, checked safe and due 10/12/2024

28 DIXIE BLACKCAP 8559
09-21-2018 Cow *19484678 Tattoo: 8559

#A A R Ten X 7008 S A #Mytty In Focus
****V A R Discovery 2240** #A A R Lady Kelton 5551
 17262835 #Sitz Upward 307R
 #Deer Valley Rita 0308 *G A R Objective 2345
 #**V A R Reserve 1111 #B/R New Day 454
 *Dixie Blackcap 434 *Sandpoint Blackbird 8809
 18552841 +RMRK Blackcap 0233 #G A R Predestined
 +Riverbend Blackcap S699

| | | |
|-----|------|-----|
| \$M | +67 | |
| \$W | +65 | 25% |
| \$F | +70 | |
| \$G | +102 | 1% |
| \$B | +172 | 10% |
| \$C | +290 | 10% |

| CED | BEPD | WEPD | YEPD | RADG | DMI | MILK | HP | CEM |
|-----|------|------|------|------|-------|------|-------|-----|
| +2 | +1.6 | +67 | +117 | +2.3 | +1.40 | +25 | +16.7 | +4 |
| | | 25% | 25% | | | | 10% | |

| \$EN | SC | DOC | HS | CW | MARB | RE | FAT | \$AxH | \$AxJ |
|------|-----|-----|-----|-----|-------|-----|-------|-------|-------|
| -12 | +97 | +10 | +30 | +34 | +1.61 | +38 | -.034 | +88 | +46 |
| | | | 10% | | 1% | | 4% | | |

Consigned by: Dixie Farms Angus, Bob Burford
 Dixie Rita is a well balanced production cow with Top 1% Marb, \$Grid, Top 4% Heifer Pregnancy, Fat and 10 EPD's or \$Values in the top 25. AI bred on 12/13/2023 to Baldridge Heat Seeker, due 9/21/2024, checked safe.

DIXIE FARMS ANGUS

Fourth Annual

ANGUS BULL & FEMALE SALE

SATURDAY | OCTOBER 19 | COUSHATTA, LA

Selling: 75+ ANGUS BULLS 18 MONTHS TO 2 YEAR OLD

SELECT OFFERING REGISTERED ANGUS FEMALES · 50+ ULTRABLACK BRED HEIFERS

VIEW CATTLE ONLINE AT WWW.LUKEMOBLEY/DIXIE-FARMS-ANGUS

Contact Us:

DIXIE FARMS ANGUS
 KENNETH ALTOM, MANAGER | (254) 319-8298
 BOB BURFORD | (318) 464-8858 | RGBURFORD@AOL.COM
 6102 HIGHWAY 5 | GLOSTER, LA 71030

CHECK US OUT ON FACEBOOK

Mobleystock Marketing

COL. LUKE MOBLEY | 205-270-0999
WWW.LUKEMOBLEY.COM | LUKEMOBLEYI@GMAIL.COM

Fall Calving Bred Females



GAR Ashland 2179 - Lot 29

29 G A R ASHLAND 2179
09-01-2019 Cow #*19568528 Tattoo: 2179

#*G A R Ashland 18217198
#*G A R Early Bird
#*Chair Rock Ambush 1018
#*G A R Prophet 18333196
#*G A R Progress F83

#*G A R Daylight
#*G A R Progress 830
#*B/R Ambush 28
#*G A R Yield Grade N366
#*C A R Bextor 872 5205 608
#*G A R Objective 1885
#*G A R Progress
#*G A R 28 Ambush C19

| | | |
|-----|------|-----|
| \$M | +81 | 10% |
| \$W | +85 | 1% |
| \$F | +84 | |
| \$G | +96 | 1% |
| \$B | +180 | 10% |
| \$C | +314 | 2% |

| CED | BEPD | WEPD | YEPD | RADG | DMI | MILK | HP | CEM |
|-----|------|------|------|------|-------|------|-------|-----|
| +17 | -1.3 | +76 | +132 | +2.6 | +1.43 | +34 | +15.0 | +10 |
| 1% | 10% | 10% | 10% | | | 10% | 15% | |

| \$EN | SC | DOC | HS | CW | MARB | RE | FAT | \$AxH | \$AxJ |
|------|-----|-----|-----|-----|-------|-----|-------|-------|-------|
| -21 | +28 | +29 | +23 | +46 | +1.56 | +44 | +0.27 | +202 | +177 |
| | | 4% | 5% | | 1% | | | 1% | 3% |

Consigned by: Pine Tree Ranch, Enyart Mitchell
Nice Gardiner cow which carries very balanced EPDs. Hard to find this type with top 10% \$M while having top 1% Marb and 3% \$C.
AI Bred to GAR Fireproof due 9/4/24.



BAR W K263 Prophet 0002 - Lot 30

30 BAR W K263 PROPHET 0002
12-18-2019 Cow #*19711912 Tattoo: 0002

#*G A R Prophet 17799492
#*Chair Rock 5050 G A R 1131
#*G A R Momentum 19187096
#*Bar W Ten X 6035

#*C A R Bextor 872 5205 608
#*G A R Objective 1885
#*G A R New Design 5050
#*Chair Rock Objective 7042
#*G A R Progress
#*G A R Big Eye 1770
#*A A R Ten X 7008 S A
#*G A R Daybreak 1622

| | | |
|-----|------|-----|
| \$M | +39 | |
| \$W | +67 | 20% |
| \$F | +97 | 25% |
| \$G | +92 | 2% |
| \$B | +190 | 3% |
| \$C | +285 | 10% |

| CED | BEPD | WEPD | YEPD | RADG | DMI | MILK | HP | CEM |
|-----|------|------|------|------|-------|------|------|-----|
| +11 | +8 | +80 | +152 | +3.2 | +2.28 | +24 | +8.3 | +13 |
| 15% | | 5% | 2% | 4% | | | | 10% |

| \$EN | SC | DOC | HS | CW | MARB | RE | FAT | \$AxH | \$AxJ |
|------|------|-----|-----|-----|-------|-----|-------|-------|-------|
| -39 | -.70 | +12 | +43 | +55 | +1.42 | +70 | +0.20 | +174 | +164 |
| | | | | 20% | 2% | 25% | | 4% | 4% |

Consigned by: Pine Tree Ranch, Enyart Mitchell
Nice cow with straight Gardiner breeding and balanced EPDs.
AI Bred to GAR Fireproof due 9/4/23.

31 LS 552 OF 356 RIGHT ANSWER [MP]
09-06-2015 Cow 18414111 Tattoo: 552

#*S A V Final Answer 0035
#*Connealy Right Answer 746
15832750

#Sitz Traveler 8180
S A V Emulous 8145
#Hyline Right Time 338
Happy Daze of Conanga 6260
#*Mytty In Focus
#A A R Lady Kelton 5551
#Connealy Reflection
#L S 780 of 108 461

| | | |
|-----|------|-----|
| \$M | +53 | |
| \$W | +64 | 25% |
| \$F | +80 | |
| \$G | +39 | |
| \$B | +118 | |
| \$C | +206 | |

| CED | BEPD | WEPD | YEPD | RADG | DMI | MILK | HP | CEM |
|-----|------|------|------|------|-----|------|------|-----|
| +8 | +0 | +63 | +110 | +2.5 | +62 | +27 | +8.4 | +9 |
| | 25% | | | | | | | |

| \$EN | SC | DOC | HS | CW | MARB | RE | FAT | \$AxH | \$AxJ |
|------|-------|-----|-----|-----|------|-------|--------|-------|-------|
| -15 | +1.02 | +18 | +43 | +26 | +53 | +0.09 | +0.021 | +19 | -5 |

Consigned By: MAG Angus Ranch, Marc Grabert
Sired by a Final Answer 0035 son and out of a Ten X daughter.
Exposed to 44 Monumental 1212 (20328739) March 15th to sale date.



Bon View New Design 878 - Sire of Lot 32

32 TT MISS DORA 051 878 187
08-27-2015 Cow 18482953 Tattoo: 187

#B/R New Design 036
#Bon View New Design 878
13062750
Bon View Gammer 85

#V D A R New Trend 315
B/R Blackcap Empress 76
#Bon View Bando 598
Bon View Gammer 233
#*Boyd New Day 8005
B/R Ruby 1224
#*S A V 004 Density 4336
Oak Bowery Dora 867

| | | |
|-----|------|--|
| \$M | +60 | |
| \$W | +48 | |
| \$F | +94 | |
| \$G | +53 | |
| \$B | +147 | |
| \$C | +251 | |

| CED | BEPD | WEPD | YEPD | RADG | DMI | MILK | HP | CEM |
|-----|------|------|------|------|-----|------|-------|-----|
| +5 | +2.5 | +47 | +96 | +2.4 | +92 | +35 | +14.5 | +2 |
| | | | | | | 10% | 20% | |

| \$EN | SC | DOC | HS | CW | MARB | RE | FAT | \$AxH | \$AxJ |
|------|-------|-----|-----|-----|------|-----|-------|-------|-------|
| -8 | +2.22 | +11 | +57 | +45 | +84 | +10 | +0.44 | +53 | +30 |
| | 1% | | | | 20% | | | | |

Consigned By: MAG Angus Ranch, Marc Grabert
New Design 878 daughter with maternal and carcass. Top 10% Milk, 15% HP and 20% Marb.
Exposed to 44 Monumental 1212 (20328739) March 15th to sale date.

33 WAGGONER 1556 OF 5855 5799
11-01-2014 Cow 17996031 Tattoo: 1556

#*G A R New Design 5050
#*G A R 5050 New Design 5799
16496990
#*G A R Objective 2445

#B/R New Design 036
G A R Precision 706
#*S S Objective 1510 0T26
#*G A R Precision 183
#*Bon View New Design 878
Bon View Gammer 85
#Rockn D Ambush 1531
G A R Precision 2536

| | | |
|-----|------|-----|
| \$M | +57 | |
| \$W | +61 | |
| \$F | +97 | 25% |
| \$G | +68 | 15% |
| \$B | +166 | 15% |
| \$C | +272 | 15% |

| CED | BEPD | WEPD | YEPD | RADG | DMI | MILK | HP | CEM |
|-----|------|------|------|------|-----|------|-------|-----|
| +9 | +1.0 | +66 | +115 | +2.7 | +92 | +25 | +11.1 | +12 |
| 25% | | | | 25% | | | | 15% |

| \$EN | SC | DOC | HS | CW | MARB | RE | FAT | \$AxH | \$AxJ |
|------|------|-----|-----|-----|-------|-----|--------|-------|-------|
| -24 | +.79 | +22 | +10 | +45 | +1.05 | +33 | +0.021 | +108 | +87 |
| | | 25% | 2% | | 10% | | | | |

Consigned By: MAG Angus Ranch, Marc Grabert
New Design 5050 granddaughter stemming from the 2536 RDA cow family.
Top 15% \$G and \$B, and 20% \$C.
Exposed to 44 Monumental 1212 (20328739) March 15th to sale date.

Bred Heifers



Greenline Ever Entense 2044 - Donation Heifer Lot 34

Donation Heifer

3A GREENELINE EVER ENTENSE 2044
10-15-2022 Cow #*20662932 Tattoo: 2044

*Tehama Upward Y238 #Sitz Upward 307R
#**Tehama Tahoe B767 *Tehama Elite Blackbird T735
17817177 *Tehama Mary Blackbird V684#S A V Final Answer 0035
ANGUS 035 Tehama Mary Blackbird T073
#W H S Limelight 64V #Mytty In Focus
#*Greenline Ever Entense 6016 #W H S Predestined Lass 77T
18784137 #Greenline Ever Entense 4067 Greeneline Objective 1039
Greeneline Ever Entense 1011

| | |
|-----|--------|
| \$M | +65 |
| \$W | +89 1% |
| \$F | +91 |
| \$G | +58 |
| \$B | +149 |
| \$C | +258 |

| CED | BEPD | WEPD | YEPD | RADG | DMI | MILK | HP | CEM |
|-----|------|------|------|------|-------|------|-------|-----|
| +11 | -.1 | +85 | +145 | +.27 | +1.53 | +38 | +14.4 | +14 |
| 15% | 25% | 5% | 10% | | | 2% | 25% | 5% |

| \$EN | SC | DOC | HS | CW | MARB | RE | FAT | \$AxH | \$AxJ |
|------|-------|-----|------|-----|------|------|-------|-------|-------|
| -42 | +1.72 | +12 | +.28 | +58 | +.78 | +.63 | +.027 | +114 | +138 |
| | 10% | | 15% | | | | | | 25% |

Consigned by: Greenline Angus, Gary Greene
A powerful embryo daughter out of the Greeneline donor Greeneline Ever Entense 6016, sired by the proven Tehama Tahoe with a tremendous birth-to-weaning weight spread. This heifer posted a 987# adjusted yearling weight and had an IMF US ratio of 108. She is AI bred to the very popular \$500,000 Connealy Craftsman. A great choice to add to any herd with 14 EPDs and \$Value traits in the top 25%.
AI Bred 12/1/23 to Connealy Craftsman.
Proceeds will go to the Louisiana Junior Angus Association.



Crazy K Rita 5108 - Dam of Lot 35

35 FWY RITA 2037 OF 5108
02-20-2022 Cow #*20597436 Tattoo: 2037

*Poss Maverick #*Basin Payweight 1682
#**Poss Rawhide Poss Pride 5163
19416968 *Poss Blueblood 6502 Poss Easy Impact 0119
HOSOK Poss Blueblood 920
#V A R Generation 2100 #*Connealy Consensus 7229
#*Crazy K Rita 5108 #*Sandpoint Blackbird 8809
18262314 *Crazy K Rita 3422 #*EXAR Upshot 0562B
#*EF Queen 8210

| | |
|-----|----------|
| \$M | +49 |
| \$W | +64 |
| \$F | +127 3% |
| \$G | +69 25% |
| \$B | +195 10% |
| \$C | +302 15% |

| CED | BEPD | WEPD | YEPD | RADG | DMI | MILK | HP | CEM |
|-----|------|------|------|------|------|------|------|-----|
| +15 | -1.5 | +64 | +122 | +.31 | +.92 | +28 | +8.5 | +14 |
| 2% | 10% | | | 15% | | | | 5% |

| \$EN | SC | DOC | HS | CW | MARB | RE | FAT | \$AxH | \$AxJ |
|------|-------|-----|-------|-----|------|-------|-------|-------|-------|
| -23 | +1.62 | +25 | +1.01 | +69 | +.87 | +1.01 | +.019 | +215 | +193 |
| | 10% | 20% | | 15% | 15% | | | 4% | 10% |

Consigned by: Fairway Farms Angus, Monte Ethington
Calving ease daughter of Crazy K Rita 5108 donor that stems from the Rita 3422 donor, sired by Rawhide.
Due 10/1/24 to Hollywood.



2 Bar Objective 863 - Granddam of Lot 36

36 FWY RITA 2606
12-10-2022 Cow 20914409 Tattoo: 2606

#*G A R Ashland *G A R Early Bird
#*G A R Greater Good *Chair Rock Ambush 1018
19362382 *G A R Sure Fire A5008 #*G A R Sure Fire
#*G A R Mandate A2011
#*G A R Ext 4206
#*S S Objective T510 OT26
+JT Miss 723 Rito Plus 1884

| | |
|-----|----------|
| \$M | +68 |
| \$W | +70 20% |
| \$F | +95 |
| \$G | +78 15% |
| \$B | +173 20% |
| \$C | +292 20% |

| CED | BEPD | WEPD | YEPD | RADG | DMI | MILK | HP | CEM |
|------|------|-------|-------|-------|-------|-------|-------|------|
| +1.7 | +1.6 | +1.72 | +1.28 | +1.27 | +1.68 | +1.28 | +13.7 | +1.6 |
| | | 25% | 25% | | | | | |

| \$EN | SC | DOC | HS | CW | MARB | RE | FAT | \$AxH | \$AxJ |
|------|-------|-------|-------|-------|-------|-------|--------|-------|-------|
| -20 | +1.54 | +1.17 | +1.25 | +1.55 | +1.05 | +1.87 | -1.013 | +158 | +151 |
| | | | 15% | | 20% | 25% | 20% | 20% | 20% |

Consigned by: Fairway Farms Angus, Monte Ethington
Greater Good sire female out of a Predestined daughter stemming from the Objective 863 donor. Great maternal female with added carcass values.
AI 4/24/24 to Sterling Pacific 904

37 FWY RITA 2502
09-24-2022 Cow #20915186 Tattoo: 2502

#*Connealy Black Granite #*Connealy Consensus 7229
#*Bar R Jet Black 5063 #*Eura Elga of Conanga 9109
18389838 Bar R Iris Anita 0113 #*Sitz Upward 307R
Bar R Anita 7081
#*Rito 9Q13 of Rita 5F56 GHM
#*FF Rito 2Q26 of 356H 9Q13
#*FWY Rita 5211 #*JR Queen of New Design 356H
18076273 +G A R Daybreak M721 #MCC Daybreak
+G A R Objective 2827

| | |
|-----|----------|
| \$M | +68 |
| \$W | +68 25% |
| \$F | +101 25% |
| \$G | +58 |
| \$B | +158 |
| \$C | +273 |

| CED | BEPD | WEPD | YEPD | RADG | DMI | MILK | HP | CEM |
|------|------|-------|-------|-------|-------|-------|-------|------|
| +1.0 | +1.7 | +1.68 | +1.24 | +1.28 | +1.16 | +1.28 | +10.1 | +1.8 |
| 20% | | | | | | | | |

| \$EN | SC | DOC | HS | CW | MARB | RE | FAT | \$AxH | \$AxJ |
|------|-------|-------|-------|-------|-------|-------|--------|-------|-------|
| -10 | +1.05 | +1.23 | +1.70 | +1.53 | +1.69 | +1.87 | +1.017 | +152 | +151 |
| | | | | | | 25% | | 25% | 20% |

Consigned by: Fairway Farms Angus, Monte Ethington
Jet Black sired female out of a Rito 2Q26 daughter. Calving ease female with maternal and carcass.
AI 4/24/24 to Hollywood

38 FWY RITA 2568
11-25-2022 Cow 20914434 Tattoo: 2568

*G A R Prophet K263 #*G A R Prophet
#*Beal Breakthrough #*Chair Rock 5050 G A R 1131
19829112 #H P C A Sure Fire S6 #*G A R Sure Fire
#*H P C A Ingenuity A372
#*Baldrige Alternative E125 Poss Easy Impact 0119
#*FWY Henrietta 0547 Baldridge Blackbird A030
20028382 #*Spruce Mtn Henrietta 4028 #*Rito 9M25 of Rita 5F56 Pred
#*Spruce Mtn Henrietta P 1011

| | |
|-----|----------|
| \$M | +79 15% |
| \$W | +71 15% |
| \$F | +106 20% |
| \$G | +96 4% |
| \$B | +202 5% |
| \$C | +341 3% |

| CED | BEPD | WEPD | YEPD | RADG | DMI | MILK | HP | CEM |
|------|------|-------|-------|-------|-------|-------|-------|------|
| +1.4 | +1.4 | +1.71 | +1.30 | +1.28 | +1.58 | +1.28 | +14.1 | +1.5 |
| 4% | | 25% | 20% | | | | | 3% |

| \$EN | SC | DOC | HS | CW | MARB | RE | FAT | \$AxH | \$AxJ |
|------|-------|-------|-------|-------|-------|-------|--------|-------|-------|
| -15 | +1.31 | +1.21 | +1.37 | +1.58 | +1.33 | +1.11 | -1.017 | +212 | +207 |
| | | | 25% | | 10% | 5% | 20% | 4% | 4% |

Consigned by: Fairway Farms Angus, Monte Ethington
Beal Breakthrough sired female out of an Alternative daughter. Calving ease female with great production, carcass and maternal EPDs.
AI 4/24/24 to Wilks No Substitute

Bred Heifers

39 FWY LUCY 2578
12-01-2022 Cow #20914442 Tattoo: 2578

*Poss Maverick
**Basin Payweight 1682
Poss Pride 5163
Poss Easy Impact 0119
Poss Blueblood 920
**Connealy Black Granite
**Connealy Consensus 7229
#Eura Elga of Conanga 9109
**Connealy Impression
*Basin Lucy 3829

| | |
|-----|----------|
| \$M | +56 |
| \$W | +77 10% |
| \$F | +119 5% |
| \$G | +63 |
| \$B | +182 15% |
| \$C | +292 20% |

| CED | BEPD | WEPD | YEPD | RADG | DMI | MILK | HP | CEM |
|------|------|------|-------|-------|-------|------|-------|------|
| I+14 | I-.6 | I+71 | I+118 | I+.28 | I+.34 | I+33 | I+9.4 | I+14 |
| 4% | 15% | 25% | | | 10% | 10% | | 5% |

| \$EN | SC | DOC | HS | CW | MARB | RE | FAT | \$AxH | \$AxJ |
|------|--------|------|-------|-------|-------|-------|--------|-------|-------|
| -27 | I+1.22 | I+26 | I+.86 | I+.61 | I+.89 | I+.71 | I+.047 | +199 | +184 |
| | | 20% | | 25% | | | | 10% | 10% |



Poss Rawhide - Sire of Lots 39, 40, 42 & 43

40 FWY RITA 3018
02-04-2023 Cow #20911461 Tattoo: 3018

*Poss Maverick
**Basin Payweight 1682
Poss Pride 5163
Poss Easy Impact 0119
Poss Blueblood 920
**FF Rito Righteous 6R41
**Quaker Hill Rampage 0A36
**FF Rita 3R30 of 9Q23 5M2
**A A R Ten X 7008 S A
**V A R Blackcap 9319

| | |
|-----|----------|
| \$M | +57 |
| \$W | +75 10% |
| \$F | +113 10% |
| \$G | +63 |
| \$B | +176 20% |
| \$C | +285 25% |

| CED | BEPD | WEPD | YEPD | RADG | DMI | MILK | HP | CEM |
|------|-------|------|-------|-------|-------|------|--------|------|
| I+10 | I+1.0 | I+78 | I+128 | I+.27 | I+.83 | I+27 | I+12.4 | I+12 |
| 20% | | 15% | 25% | | | | | 15% |

| \$EN | SC | DOC | HS | CW | MARB | RE | FAT | \$AxH | \$AxJ |
|------|--------|------|-------|-------|-------|-------|--------|-------|-------|
| -35 | I+1.06 | I+25 | I+.70 | I+.63 | I+.83 | I+.73 | I+.012 | +186 | +163 |
| | | 20% | | 25% | | | | 10% | 15% |

Consigned by: Fairway Farms Angus, Monte Ethington
Rawhide sired female out of a Righteous daughter stemming from the Vintage Blackcap 5163 donor. Calving ease female that combines production, carcass and maternal.
AI 4/10/24 to Poss Winchester

43 FWY LUCY 2041
02-26-2022 Cow #20588133 Tattoo: 2041

*Poss Maverick
**Basin Payweight 1682
Poss Pride 5163
Poss Easy Impact 0119
Poss Blueblood 920
**WR Journey-1X74
*B/R Future Direction 4268
2 Bar 5050 New Design 7831
**Connealy Consensus 7229
*EXAR Lucy 9703

| | |
|-----|----------|
| \$M | +52 |
| \$W | +67 25% |
| \$F | +126 3% |
| \$G | +60 |
| \$B | +186 15% |
| \$C | +293 20% |

| CED | BEPD | WEPD | YEPD | RADG | DMI | MILK | HP | CEM |
|-----|------|------|------|-------|-------|------|-------|-----|
| +8 | +1.2 | +77 | +130 | I+.32 | I+.32 | +24 | I+9.6 | +12 |
| | | 15% | 20% | 15% | 10% | | | 15% |

| \$EN | SC | DOC | HS | CW | MARB | RE | FAT | \$AxH | \$AxJ |
|------|--------|------|-------|-------|-------|-------|--------|-------|-------|
| -28 | I+1.16 | I+24 | I+.80 | I+.66 | I+.78 | I+.74 | I+.026 | +195 | +180 |
| | | 25% | | 20% | | | | 10% | 10% |

Consigned by: Fairway Farms Angus, Monte Ethington
Rawhide sired female out of a Journey-1X74 daughter stemming from the Lucy cow family. Great production female with balanced maternal and carcass.
Due 11/25/24 44 Iron Horse

41 G-C BLACKCAP 2069
01-22-2022 Cow #20297104 Tattoo: 2069

#BUBS Southern Charm AA31
#Hickory Hill Erica 009
**Quaker Hill Rampage 0A36
*G A R Predestined 2578
*Jindra 3rd Dimension
*Jindra Blackbird Lassy 1111
**V A R Discovery 2240
*CS MS Obj R900 of S701

| | |
|-----|----------|
| \$M | +46 |
| \$W | +68 25% |
| \$F | +104 20% |
| \$G | +87 10% |
| \$B | +192 10% |
| \$C | +295 15% |

| CED | BEPD | WEPD | YEPD | RADG | DMI | MILK | HP | CEM |
|-----|------|------|------|------|-------|------|------|-----|
| +1 | +3.7 | +76 | +140 | +30 | +1.63 | +36 | +9.1 | +8 |
| | | 15% | 10% | 25% | | 4% | | |

| \$EN | SC | DOC | HS | CW | MARB | RE | FAT | \$AxH | \$AxJ |
|------|-------|-----|-----|-----|-------|-----|--------|-------|-------|
| -39 | +1.68 | +24 | +65 | +61 | +1.24 | +90 | +0.003 | +141 | +135 |
| | 10% | 25% | | 25% | 15% | 20% | | | |

Consigned by: Fairway Farms Angus, Monte Ethington
Calving ease Rawhide sired female out of a Prophet daughter stemming from the 0042 donor. Maternal female with added production and carcass values.
Due 10/1/24 to Baldrige Heat Seeker H925

44 FWY LADY 2039
02-23-2022 Cow #20593809 Tattoo: 2039

*G A R Sure Fire 6404
**G A R Sure Fire
*G A R Complete N281
*G A R Anticipation
GB Ambush 269
*MCC Daybreak
**Quaker Hill Rampage 0A36
**QHF Blackcap 6E2 of 4V16 4355
**EXAR Upshot 0562B
*R B Lady Standard 3J05-890

| | |
|-----|----------|
| \$M | +32 |
| \$W | +64 |
| \$F | +126 3% |
| \$G | +82 10% |
| \$B | +208 4% |
| \$C | +302 15% |

| CED | BEPD | WEPD | YEPD | RADG | DMI | MILK | HP | CEM |
|-----|------|------|------|------|-----|------|------|-----|
| +6 | +3.9 | +83 | +139 | +31 | +97 | +22 | +4.1 | +12 |
| | | 10% | 15% | 15% | | | | 15% |

| \$EN | SC | DOC | HS | CW | MARB | RE | FAT | \$AxH | \$AxJ |
|------|-------|-----|-----|-----|-------|-------|-------|-------|-------|
| -38 | +1.42 | +17 | +25 | +78 | +1.02 | +1.25 | -.018 | +214 | +219 |
| | 20% | | 15% | 5% | 25% | 2% | 20% | 4% | 3% |

Consigned by: Fairway Farms Angus, Monte Ethington
Fireball daughter stemming from the Powell Lady 6350 donor. Excellent production and carcass female with extreme \$Values.
Due 10/1/24 to Connealy Craftsman

42 FWY RITA 2017
02-10-2022 Cow #20588132 Tattoo: 2017

*Poss Maverick
**Basin Payweight 1682
Poss Pride 5163
Poss Easy Impact 0119
Poss Blueblood 920
**G A R Prophet
#C R A Bextor 872 5205 608
*G A R Objective 1885
**S S Objective 1510 0126
*DRMCTR 111 Rita 6108

| | |
|-----|----------|
| \$M | +60 |
| \$W | +70 20% |
| \$F | +93 |
| \$G | +83 10% |
| \$B | +176 20% |
| \$C | +288 20% |

| CED | BEPD | WEPD | YEPD | RADG | DMI | MILK | HP | CEM |
|-----|------|------|------|------|-------|------|------|-----|
| +12 | -.2 | +72 | +125 | +.25 | +1.33 | +25 | +9.4 | +12 |
| 10% | 20% | 25% | | | | | | 15% |

| \$EN | SC | DOC | HS | CW | MARB | RE | FAT | \$AxH | \$AxJ |
|------|------|-----|-----|-----|-------|-----|--------|-------|-------|
| -21 | +9.6 | +18 | +68 | +51 | +1.33 | +51 | +0.049 | +172 | +145 |
| | | | | | 10% | | | 15% | 25% |

Consigned by: Fairway Farms Angus, Monte Ethington
Calving ease Rawhide sired female out of a Prophet daughter stemming from the DRMCR 111 RITA 6108 Donor. Maternal female with great carcass and production EPDs.
Due 10/1/24 to Connealy Commerce

45 FWY RITA 2015
02-07-2022 Cow #20591876 Tattoo: 2015

#Woodhill Blueprint
**Myers Fair-N-Square M39
Myers Miss Beauty M136
**V A R Discovery 2240
*Crazy K Rita 6781
*G A R 28 Ambush N340


| | |
|-----|----------|
| \$M | +77 15% |
| \$W | +79 5% |
| \$F | +109 15% |
| \$G | +87 10% |
| \$B | +196 10% |
| \$C | +331 4% |

| CED | BEPD | WEPD | YEPD | RADG | DMI | MILK | HP | CEM |
|-----|------|------|------|------|-------|------|-------|-----|
| +2 | +1.1 | +80 | +142 | +31 | +1.22 | +19 | +13.3 | +6 |
| | | 10% | 10% | 15% | | | | |

| \$EN | SC | DOC | HS | CW | MARB | RE | FAT | \$AxH | \$AxJ |
|------|-------|-----|-----|-----|-------|-----|--------|-------|-------|
| -23 | +1.26 | +25 | +74 | +63 | +1.26 | +79 | +0.003 | +200 | +180 |
| | 25% | 20% | | 25% | 10% | | | 10% | 10% |

Consigned by: Fairway Farms Angus, Monte Ethington
Fair-N-Square sired female out of a Discovery 2240 daughter stemming from the Ambush N340 donor. Excellent combined female with production, carcass and maternal values.
Due 10/1/24 to SS Identified 7551

Bred Heifers

46 FWY RITA 3023 [AMF-CAF-DZF-DDF-MIF-NHF-CHF-OSF-RDF] 

02-05-2023 Cow 20914429 Tattoo: 3023

| | | |
|-----|------|-----|
| \$M | +61 | |
| \$W | +65 | |
| \$F | +100 | 25% |
| \$G | +68 | 25% |
| \$B | +169 | 25% |
| \$C | +280 | 25% |


##Woodhill Blueprint
*Myers Fair-N-Square M39
19418329
Myers Miss Beauty M136

##Connealy Confidence Plus
*Woodhill Evergreen Z291-B233
*Connealy Thunder
*Myers Miss Beauty M476
*Baldridge Waylon W34
*C A R Daybreak M721
*G A R Rita 7R2 of 5V11 Rampage
*FF Rita 9W12 of 7R2 4W10
19587592
*FF Rita 7R2 of 5V11 Rampage
*FF Rita 5V22 of 1010 2240

| CED | BEPD | WEPD | YEPD | RADG | DMI | MILK | HP | CEM |
|------|------|-------|-------|-------|-------|-------|-------|------|
| +1.4 | +1.4 | +1.70 | +1.28 | +1.30 | +1.97 | +1.25 | +11.4 | +1.5 |
| | | | 25% | 25% | | | | |

| \$EN | SC | DOC | HS | CW | MARB | RE | FAT | \$AxH | \$AxJ |
|------|-------|-------|-------|-------|-------|-------|--------|-------|-------|
| -21 | +1.56 | +1.26 | +1.98 | +1.51 | +1.94 | +1.69 | +1.011 | +148 | +102 |
| | | 20% | | | | | | 25% | |

Consigned by: Fairway Farms Angus, Monte Ethington
Fair-N-Square sired female out of a Highwayman daughter. Great production female with added carcass. Top 20% Docility.
AI 4/11/24 to Wilks No Substitute 2358

47 FWY RITA 2035 [NHF] 

02-18-2022 Cow *20601076 Tattoo: 2035

| | | |
|-----|------|-----|
| \$M | +84 | 10% |
| \$W | +67 | 25% |
| \$F | +93 | |
| \$G | +104 | 2% |
| \$B | +197 | 10% |
| \$C | +340 | 3% |


##*G A R Sure Fire
*G A R Reliant
18669357
*G A R Destination N244

##Connealy In Sure 8524
*Chair Rock 5050 G A R 8086
*B/R Destination 727-928
*C A R Predestined 3279
*Silveiras Conversion 8064
*Byergo Elia Cupcake 5900
*A A R Ten X 7008 S A
*Riverbend Blackbird T1088

| CED | BEPD | WEPD | YEPD | RADG | DMI | MILK | HP | CEM |
|-----|------|------|------|------|-------|------|-------|-----|
| +3 | +1.8 | +62 | +114 | +2.5 | +1.06 | +30 | +14.1 | +5 |
| | | | | | | 25% | | |

| \$EN | SC | DOC | HS | CW | MARB | RE | FAT | \$AxH | \$AxJ |
|------|-------|-----|-----|------|-------|------|-------|-------|-------|
| +7 | +1.42 | +30 | +41 | +4.8 | +1.67 | +7.0 | +0.35 | +169 | +137 |
| 10% | 20% | 5% | | | 2% | | | 15% | 25% |

Consigned by: Fairway Farms Angus, Monte Ethington
Reliant daughter stemming from the FWY 7008 OF T1088 3013 donor.
Excellent combined female with a top 3% \$C. 2035 adds maternal and carcass with top 5% \$M, 2% Marb.
Due 10/1/24 to Connealy Craftsman

48 MAG LINZ EXEMPLIFY 2EX5 S726 [AMF-CAF-DZF-DDF-MIF-NHF-CHF-OSF-RDF] 

10-22-2022 Cow 20728747 Tattoo: 2EX5

| | | |
|-----|------|-----|
| \$M | +36 | |
| \$W | +51 | |
| \$F | +97 | |
| \$G | +69 | 25% |
| \$B | +166 | 25% |
| \$C | +251 | |


##Connealy Confidence Plus
*Linz Exemplify 71124
19265123
*M A R Erica 1617

##Connealy Confidence 0100
Elbanna of Conanga 1209
*R B Tour Of Duty 177
*MAR Erica Rito 1402
*SydGen C C & 7
*Erica of Ellston C14
*Mytty In Focus
P V Dewey Princess P18

| CED | BEPD | WEPD | YEPD | RADG | DMI | MILK | HP | CEM |
|-----|------|------|------|------|------|------|------|-----|
| +1 | +2.8 | +69 | +120 | +2.8 | +6.8 | +16 | +6.1 | +7 |
| | | | | | 20% | | | |

| \$EN | SC | DOC | HS | CW | MARB | RE | FAT | \$AxH | \$AxJ |
|------|-------|-----|-----|-----|-------|------|-------|-------|-------|
| -20 | +2.36 | +19 | +61 | +50 | +1.00 | +5.2 | +0.17 | +19 | +18 |
| | 1% | | | | 25% | | | | |

Consigned By: MAG Angus Ranch, Marc Grabert
Exemplify sired female with above average production and carcass EPDs.
Targeting the Brand female with Pathfinder lineage.
AI to E&B Plus One 2/28/24. Exposed to GB 737 Sure Fire 139 from March 15th to sale date.

49 MAG 44 ENFORCER 3E16 6A15 [AMF-CAF-DZF-DDF-MIF-NHF-CHF-OSF-RDF] 

02-17-2023 Cow 20728759 Tattoo: 3E16

| | | |
|-----|------|-----|
| \$M | +61 | |
| \$W | +65 | |
| \$F | +72 | |
| \$G | +84 | 10% |
| \$B | +156 | |
| \$C | +263 | |


*S S Enforcer E812
*44 Enforcer 2H38
19909883
*Mill Brae I Karama 7237

##SydGen Enhance
*S S Miss Daybreak K011 3K17
*Mill Brae Identified 4031
*Mill Brae Stim Karama 3025
*A A R Ten X 7008 S A
*Deer Valley Rita 0274
*Rito 7M96 of Rita 5F56 Pred
Rita 4N30 of 1116 PINN

| CED | BEPD | WEPD | YEPD | RADG | DMI | MILK | HP | CEM |
|-----|------|------|------|------|-------|------|------|-----|
| +7 | +9 | +71 | +138 | +3.3 | +1.63 | +25 | +9.3 | +14 |
| | | 25% | 15% | 10% | | | | 5% |

| \$EN | SC | DOC | HS | CW | MARB | RE | FAT | \$AxH | \$AxJ |
|------|------|-----|-----|-----|-------|------|-------|-------|-------|
| -21 | +7.7 | +22 | +38 | +38 | +1.14 | +9.0 | -0.16 | +155 | +148 |
| | | | | | 15% | 20% | 20% | 25% | 20% |

Consigned By: MAG Angus Ranch, Marc Grabert
Great Production and carcass female out of a Deer Valley All In daughter.
AI to E&B Plus One 2/28/24. Exposed to GB 737 Sure Fire 139 from March 15th to sale date.

50 MAG 44 ENFORCER 3E20 5PL3 [AMF-CAF-DZF-DDF-MIF-NHF-CHF-OSF-RDF] 

03-05-2023 Cow 20728758 Tattoo: 3E20

| | | |
|-----|------|-----|
| \$M | +60 | |
| \$W | +63 | |
| \$F | +111 | 15% |
| \$G | +48 | |
| \$B | +159 | |
| \$C | +266 | |

*S S Enforcer E812
*44 Enforcer 2H38
19909883
*Mill Brae I Karama 7237

##SydGen Enhance
*S S Miss Daybreak K011 3K17
*Mill Brae Identified 4031
*Mill Brae Stim Karama 3025
*S A V Pioneer 7301
*S A V Greystone Jannet 5345
*S A V Harvester 0338
*S A V Platinum 0010
Tates Jes 3HA4 5PL3
18442477
Tates Jes 075 3HA4


| CED | BEPD | WEPD | YEPD | RADG | DMI | MILK | HP | CEM |
|-----|------|------|------|------|-------|------|-------|-----|
| +2 | +3.4 | +74 | +141 | +31 | +1.75 | +31 | +14.3 | +7 |
| | | 20% | 10% | 15% | | 20% | 25% | |

| \$EN | SC | DOC | HS | CW | MARB | RE | FAT | \$AxH | \$AxJ |
|------|-----|-----|-----|-----|------|------|-------|-------|-------|
| -35 | +85 | +18 | +34 | +64 | +5.7 | +7.7 | +0.40 | +120 | +128 |
| | | | 20% | 20% | | | | | |

Consigned By: MAG Angus Ranch, Marc Grabert
Maternal female stemming from a Platinum 0010 daughter. Top 20% WW, HP and Milk.
AI to E&B Plus One 2/28/24. Exposed to GB 737 Sure Fire 139 from March 15th to sale date.



Sitz Accomplishment 720F - Sire of Lot 51

51 MAG ACCOMPLISHMENT 2AC7 5PL3 [AMF-CAF-DZF-DDF-MIF-NHF-CHF-OSF-RDF] 

01-18-2022 Cow 20612864 Tattoo: 2AC7

| | | |
|-----|------|--|
| \$M | +58 | |
| \$W | +55 | |
| \$F | +86 | |
| \$G | +49 | |
| \$B | +135 | |
| \$C | +233 | |


##Poss Achievement
*Sitz Accomplishment 720F
19078208
Sitz Barbaramere Nell 166D

Poss Lasting Impact 3118
*Poss Erica 327
*S A V Resource 1441
Sitz Barbaramere Nell 14Y
*S A V Pioneer 7301
*S A V Greystone Jannet 5345
*S A V Harvester 0338
Tates Jes 1HH1 075

| CED | BEPD | WEPD | YEPD | RADG | DMI | MILK | HP | CEM |
|-----|------|------|------|------|-------|------|-------|-----|
| +7 | +1.3 | +62 | +112 | +2.2 | +1.67 | +21 | +14.8 | +13 |
| | | | | | | | 20% | 10% |

| \$EN | SC | DOC | HS | CW | MARB | RE | FAT | \$AxH | \$AxJ |
|------|-----|-----|-----|-----|------|------|-------|-------|-------|
| -15 | +55 | +7 | +40 | +45 | +6.1 | +7.7 | +0.57 | +122 | +106 |

Consigned By: MAG Angus Ranch, Marc Grabert
Accomplishment sired female out of a Platinum 0010 daughter. Half sister to 3E20.
Exposed to 44 Monumental 1212 (20328739) March 15th to sale date.

52 MAG SYDGEN ENHANCE 2SE9 187 [AMF-CAF-DZF-DDF-MIF-NHF-CHF-OSF-RDF] 

01-22-2022 Cow *20612863 Tattoo: 2SE9

| | | |
|-----|------|-----|
| \$M | +56 | |
| \$W | +56 | |
| \$F | +101 | 25% |
| \$G | +59 | |
| \$B | +160 | |
| \$C | +264 | |

##SydGen Enhance
*SydGen Exceed 3223
18170041
SydGen Rita 2618

*SydGen Googol
*SydGen Forever Lady 1255
*SydGen Liberty GA 8627
*Fox Run Rita 9308
*B/R New Design 036
Bon View Gammer 85
*B/R New Day 454
TT Miss Dora W156

| CED | BEPD | WEPD | YEPD | RADG | DMI | MILK | HP | CEM |
|-----|------|------|------|------|-------|------|-------|-----|
| +8 | +1.1 | +64 | +135 | +2.9 | +2.23 | +28 | +15.6 | +3 |
| | | | 15% | | | | 15% | |

| \$EN | SC | DOC | HS | CW | MARB | RE | FAT | \$AxH | \$AxJ |
|------|-------|-----|-----|-----|------|------|-------|-------|-------|
| -29 | +2.13 | +26 | +52 | +59 | +8.9 | +3.2 | +0.39 | +76 | +61 |
| | 2% | 20% | | | | | | | |

Consigned By: MAG Angus Ranch, Marc Grabert
Enhanced sire female out of a Bon View New Design 878 daughter with above average EPDs across the board.
Exposed to 44 Monumental 1212 (20328739) March 15th to sale date.

Open Heifers



H P C A Big Town - Sire of Lots 54 & 55



Pine Tree Home Town 347 - Lot 53

53 PINE TREE HOME TOWN 347
02-10-2023 Cow #*20921068 Tattoo: 347

#**G A R Ashland *G A R Early Bird
*G A R Home Town *Chair Rock Ambush 1018
19266718 *Chair Rock Sure Fire 6095 #*G A R Sure Fire
*Chair Rock Progress 3005
ANGUS 65 #SydGen Enhance **SydGen Exceed 3223
*H P C A Enhance H170 SydGen Rita 2618
20049156 *H P C A Sunrise A246 #**G A R Sunrise
*H P C A Prophet A3

| | | |
|-----|------|-----|
| \$M | +73 | 25% |
| \$W | +72 | 15% |
| \$F | +84 | |
| \$G | +105 | 2% |
| \$B | +189 | 10% |
| \$C | +318 | 10% |

| CED | BE PD | WEPD | YEPD | RADG | DMI | MILK | HP | CEM |
|-----|-------|------|------|------|-------|------|-------|-----|
| +14 | -.1 | +68 | +124 | +.30 | +1.11 | +36 | +15.1 | +9 |
| 4% | 25% | | | 25% | | 4% | 20% | |

| \$EN | SC | DOC | HS | CW | MARB | RE | FAT | \$AxH | \$AxJ |
|------|------|-----|------|-----|-------|-------|-------|-------|-------|
| -31 | -.23 | +30 | +.02 | +42 | +1.51 | +1.00 | -.027 | +212 | +198 |
| | | 5% | 1% | | 4% | 15% | 10% | 4% | 10% |

Consigned by: Pine Tree Ranch, Enyart Mitchell

Beautiful Home Town open heifer whose granddam is the dam of HPCA Veracious. Excellent carcass values and very nice phenotype.



Pine Tree Big Town 371 - Lot 54

54 PINE TREE BIG TOWN 371
03-15-2023 Cow #*20893503 Tattoo: 371

*G A R Home Town #**G A R Ashland
*H P C A Big Town *Chair Rock Sure Fire 6095
20068634 *H P C A Sunrise A246 #*G A R Sunrise
*H P C A Prophet A3
ANGUS 65 #*G A R Ashland *G A R Early Bird
*G A R Ashland 2179 *Chair Rock Ambush 1018
19568528 *G A R Prophet 2345 #*G A R Prophet
*G A R Progress FB3

| | | |
|-----|------|-----|
| \$M | +57 | |
| \$W | +75 | 10% |
| \$F | +95 | |
| \$G | +110 | 1% |
| \$B | +205 | 5% |
| \$C | +323 | 10% |

| CED | BE PD | WEPD | YEPD | RADG | DMI | MILK | HP | CEM |
|-----|-------|------|------|------|-------|------|-------|-----|
| +3 | +3.4 | +89 | +149 | +.27 | +1.67 | +25 | +11.1 | +2 |
| | | 3% | 5% | | | | | |

| \$EN | SC | DOC | HS | CW | MARB | RE | FAT | \$AxH | \$AxJ |
|------|------|-----|------|-----|-------|------|-------|-------|-------|
| -37 | +.62 | +23 | +.23 | +60 | +1.74 | +.63 | -.012 | +198 | +175 |
| | | 10% | | | 1% | | 25% | 10% | 15% |

Consigned by: Pine Tree Ranch, Enyart Mitchell

Nice Big Town daughter out of a GAR Ashland 2179 cow which sells as Lot 29 in this sale, Look at the Top 1% Marbling, This is a good one!



Pine Tree Big Town 377 - Lot 55

55 PINE TREE BIG TOWN 377
02-15-2023 Cow #*20893502 Tattoo: 377

*G A R Home Town #**G A R Ashland
*H P C A Big Town *Chair Rock Sure Fire 6095
20068634 *H P C A Sunrise A246 #*G A R Sunrise
*H P C A Prophet A3
ANGUS 65 #EXAR Monumental 6056B *3F Epic 4631
*BarW 1525 Monumental 8076 *FWY 7008 of C085 4029
19291635 *EF Rita 1525 #Summitrest Complete 1P55
*G A R Predestined 3826

| | | |
|-----|------|-----|
| \$M | +74 | 25% |
| \$W | +78 | 10% |
| \$F | +95 | |
| \$G | +104 | 2% |
| \$B | +199 | 10% |
| \$C | +332 | 4% |

| CED | BE PD | WEPD | YEPD | RADG | DMI | MILK | HP | CEM |
|-----|-------|------|------|------|-------|------|-------|-----|
| -1 | +4.1 | +84 | +132 | +.21 | +1.47 | +27 | +10.5 | +1 |
| | | 10% | 20% | | | | | |

| \$EN | SC | DOC | HS | CW | MARB | RE | FAT | \$AxH | \$AxJ |
|------|-------|-----|------|-----|-------|------|-------|-------|-------|
| -15 | +1.20 | +25 | +.12 | +63 | +1.58 | +.90 | +.007 | +184 | +161 |
| | | 20% | 3% | 25% | 3% | 20% | | 10% | 15% |

Consigned by: Pine Tree Ranch, Enyart Mitchell

Beautiful February Big Town daughter which ranks in the top 10% for ten traits of economic importance including marbling, \$B and \$C.

Embryos

56 3 DIXIE EVA 0601 X KINDRED EMBRYOS

| | | | | |
|--------------------------|------------------------------------------------------------------------|-----------------------------------------------------------------------------------------------------------------------------------------------------------------------------------------------------------|--------------------------------------------------------------|--|
| N/A | Embryo N/A | Tattoo: N/A | | |
| *K A Kindred 20446645 | *GB Fireball 672 *K A Miss High Weigh 862 *E W A West Point 7258 | *G A R Sure Fire 6404 *GB Anticipation 432 *E W A High Weigh 3123 K A Miss Discovery 5163 *G A R Momentum *E W A 3114 of 128 Weigh Up **Quaker Hill Rampage 0A36 Maplecrest Eva 7010 | \$M 62 \$W 76 \$F 118 \$G 102 \$B 220 \$C 346 | |
| Parent Averages: | | | | |

| CED | BEPD | WEPD | YEPD | RADG | DMI | HP | CEM | SC | MILK |
|-------|------|------|------|------|------|-------|-------|-------|------|
| 12 | -0.2 | 77 | 144 | 0.33 | 1.59 | 15.3 | 14 | 0.64 | 33 |
| \$EN | DOC | HS | CW | MARB | REA | FAT | \$AxH | \$AxJ | |
| -39.5 | 20 | 0.28 | 98 | 1.52 | 1.01 | 0.025 | 234 | 227 | |

Consigned by: Dixie Farms Angus, Bob Burford
Three conventional embryos combining KA Kindred, who may be the most powerful, phenotypically correct son of GB Fireball available, with the exciting young donor Dixie Eva 0601. Eva 0601 blends the Select Sires Feature EVA Westpoint and the deceased Dixie Farms Angus foundation donor, FWY Eva 5533, who produced the \$310,000 valued HR Eva 9035 and is the full sibling to ST Genetics feature GAR Storm. Selling three conventional embryos with a guarantee of one pregnancy if transferred by a certified embryologist.



Three Dixie Eva 0601



K A Kindred

57 3 BLACKCAP 7605 X AMBITIOUS EMBRYOS

| | | | | |
|---------------------------------|----------------------------------------|-----------------------------------------------------------------------------------------------------------------------------------------------------------------------------------------|-------------------------------------------------------------|--|
| N/A | Embryo N/A | Tattoo: N/A | | |
| **FF Rito Ambitious 20437882 | *SEO Ultra Provider *RMRK Rita 0237 | *G A R Momentum K836 *Chair Rock Progress 3023 *Thomas Edison 6764 *RMRK Rita 8232 **Basin Payweight 0065 2IAR O Lass 7017 **GAR-EGL Protege +G A R Objective 1898 | \$M 80 \$W 71 \$F 136 \$G 95 \$B 230 \$C 378 | |
| Parent Averages: | | | | |

| CED | BEPD | WEPD | YEPD | RADG | DMI | HP | CEM | SC | MILK |
|------|------|------|------|------|------|-------|-------|-------|------|
| 6 | 2.1 | 82 | 144 | 0.31 | 1.62 | 14.9 | 10 | 0.81 | 21 |
| \$EN | DOC | HS | CW | MARB | REA | FAT | \$AxH | \$AxJ | |
| -22 | 26 | 0.56 | 85 | 1.4 | 0.87 | 0.004 | 221 | 210 | |

Consigned by: Dixie Farms Angus, Bob Burford
Three conventional embryos out of ACC Blackcap 7605, a former donor at Circle G Ranches that has the depth and softness you would expect from a daughter of Basin Payweight 1682 and boasts elite EPD \$Values with Top 10% \$M, 2% \$B, 1% \$F and 1% \$C. FF Rito Ambitious is the \$235,000 feature of the 2023 Friendship Farms Bull sale who later sold a limited release of semen packages at the 2024 Bases Loaded Sale for \$500,000, and combines calving ease, performance with elite Marbling and \$C.
Selling three conventional embryos with a guarantee of one pregnancy if transferred by a certified embryologist.



ACC Blackcap 7605



FF Rito Ambitious

58 3 DIXIE FIRST LADY 1211 X RISE ABOVE EMBRYOS

| | | | | |
|-------------------------------------------|----------------------------------------------------------|-------------------------------------------------------------------------------------------------------------------------------------------------------------------------------------------------------------------|-------------------------------------------------------------|--|
| N/A | Embryo N/A | Tattoo: N/A | | |
| *Stellpflug Hoffman RiseAbove 20516965 | *Hoffman Stagecoach 1908 *Hoffman 3210 Rita Lady 0256 | **Tehama Tahoe B767 **BSG Countess 1705 of 028 *Bar R Jet Black 5063 *HA Rito Lady 3839 **Connealy Confidence Plus *E&B Lady 1023 Precision 936 **TEX Playbook 5437 *Vintage First Lady 4389 | \$M 92 \$W 81 \$F 124 \$G 63 \$B 187 \$C 334 | |
| Parent Averages: | | | | |

| CED | BEPD | WEPD | YEPD | RADG | DMI | HP | CEM | SC | MILK |
|-------|------|------|------|------|------|-------|-------|-------|------|
| 9 | 2.4 | 89 | 151 | 0.32 | 1.33 | 14.2 | 9.5 | 0.55 | 23 |
| \$EN | DOC | HS | CW | MARB | REA | FAT | \$AxH | \$AxJ | |
| -18.5 | 19 | 0.58 | 77 | 0.88 | 0.65 | 0.029 | 162 | 136 | |

Consigned by: Dixie Farms Angus, Bob Burford
Three conventional embryos from Dixie First Lady 1211, our favorite daughter of Vintage First Lady 7414, the \$70,000 valued feature of the 2022 Vintage Angus Ranch Annual Production Sale, who descends from the legendary Jorgenson Angus donor, Ideal 4465 6807 4286. We mated her with a ST Genetics and Select Sires sire that's been described as "Possibly the most exciting sire to enter stud from the 2023 spring season." Stellpflug Hoffman Rise above is a rare combination of phenotype, proven maternal line and EPD's. Selling three conventional embryos with a guarantee of one pregnancy if transferred by a certified embryologist.



Dixie First Lady 1211



Stellpflug Hoffman RiseAbove

59 3 EVA 7850 X KENNY ROGERS EMBRYOS

| | | | | |
|----------------------------|-------------------------------------------------------|-------------------------------------------------------------------------------------------------------------------------------------------------------------------------------------------------------------------|-------------------------------------------------------------|--|
| N/A | Embryo N/A | Tattoo: N/A | | |
| **Kenny Rogers 20092065 | *SydGen KCF Gavel 8361 *Foxhovens Kintry Annie 532 | **Baldridge Colonel C251 *K C F Miss Fortress B398 *Hoover Dam *Foxhovens Kintry Annie 315 **Basin Payweight 1682 *Rita 1C43 of 9M26 Complete **Quaker Hill Rampage 0A36 Maplecrest Eva 7010 | \$M 58 \$W 82 \$F 114 \$G 81 \$B 195 \$C 311 | |
| Parent Averages: | | | | |

| CED | BEPD | WEPD | YEPD | RADG | DMI | HP | CEM | SC | MILK |
|-------|------|------|------|------|------|--------|-------|-------|------|
| 10 | 1.7 | 83 | 146 | 0.33 | 1.26 | 9.8 | 15.5 | 0.81 | 37 |
| \$EN | DOC | HS | CW | MARB | REA | FAT | \$AxH | \$AxJ | |
| -43.5 | 23 | 0.64 | 71 | 1.01 | 1.02 | -0.039 | 200 | 212 | |

Consigned by: Dixie Farms Angus, Bob Burford
Three conventional embryos out of Circle G Eva 7850, an impressive daughter of the Deer Valley Angus herd sire Tex Playbook and the deceased Dixie Farms Angus foundation donor, FWY Eva 5533, who produced the \$310,000 valued HR Eva 9035 and is the full sibling to the ST Genetics feature GAR Storm. We chose Kenny Rogers as the sire of these embryos for his outcross pedigree, his maternal power and his tremendous performance.
Selling three conventional embryos with a guarantee of one pregnancy if transferred by a certified embryologist.



Circle G Eva 7850



Kenny Rogers

HOW DO YOU CHANGE THE GAME?

"PUT MORE MARBELING IN THE CATTLE"

- PAUL DYKSTRA, CAB DIRECTOR



PINE TREE HERD SIRE:

HPCA BIG TOWN A600

HOMETOWN X HPCA SUNRISE A246 (DAM OF VERACIOUS) · AAA. 20068634

| | | | | | | | | | | | |
|------|-----|------|-----|-------------|-------------|-------|-----|-----|------------|------------|------------|
| BW | WW | YW | CW | MARB | RE | FAT | \$W | \$F | \$G | \$B | \$C |
| +3.3 | +78 | +132 | +54 | +1.91 1% | +1.21 1% | -.042 | +74 | +93 | +129 1% | +222 1% | +348 1% |

CHANGING THE GAME



**HILLHOUSE
ANGUS
RANCH**

SEMEN AVAILABLE FOR SALE


ENYART MITCHELL
318-471-0030

ENYART@PINETREEANGUS.COM

WWW.PINETREEANGUS.COM

JENNY MCMINN
318-393-4456

JENNY@PINETREEANGUS.COM


Mobley
Livestock
Marketing
Col. Luke Mobley
600 West Pine St., Batesville, AR 72501

PRSR
FIRST CLASS
U.S. POSTAGE
PAID
St. Joseph, MO
Permit #2017

LOUISIANA

ANGUS ASSOCIATION

Female Sale

SATURDAY | MAY 11, 2024 | NOON
LOUISIANA STATE FAIRGROUNDS • 3701 HUDSON STREET • SHREVEPORT, LA