



**KBHR HOMELANDER J071 - PROGENY & SEMEN**



**LOT 1A**



**GIBBS 9047G LOUISE Y534 - LOT 52 DONOR**



**GIBBS HIGHWAYMAN 3130L - SEMEN & SIRE OF EMBRYOS**

# ALABAMA & MISSISSIPPI

## Simmental Sale

**SIMMENTAL • SIMANGUS • ANGUS**  
BRED FEMALES, COW-CALF PAIRS, OPEN HEIFERS,  
BULLS & FROZEN GENETICS

**SATURDAY, MAY 17, 2025**  
1:00 PM CDT • Cullman Stockyard • Cullman, AL



# INVESTED IN YOUR SUCCESS!

On behalf of Ruble Cattle Services, Alabama Simmental Association, and Mississippi Simmental Association we would like to welcome you to the 10th annual AL/MS State Simmental Sale. We have outstanding genetic lots and live and in every stage of production. In this diverse group of females, you will find Simmental, Sim Angus, Angus, and commercial females. This sale will be featuring a pick of Homelander bred heifers consigned by Lonesome Pine Farm. Mr. Terry Bowen's cattle always rise to the top wherever he consigns. The selection of cow calf pairs by multiple consigners should definitely be a sale highlight. We will also have a nice selection of service age bulls ready for immediate use if fact we have a large selection. Open cows don't pay more now then ever. Even if you don't need a bull buying one or more of the bulls from the sale will be the best kind of insurance. We do have something for every type of cattle. Pay close attention to the genetic lots. We are selling semen on really top notch bulls and some of the bulls are really hard to get or this will be the first time they have been offered to the public. All the cattle & genetics in the sale will do well for their new owners. All the consigning breeders in Alabama and Mississippi put their best foot forward in a collaborative effort. A special thank you goes out to the boards of directors for AI & MS. This sale is not only a way to generate income for both state associations, but it gives an opportunity to all state members to market cattle on a national level. This event would not be possible without a lot of hard work and dedication by both associations. Please join us on sale day to help support this great group of breeders. We will work on finding economical trucking for lots purchased in the sale. You may contact any member of Ruble Cattle Services or the marketing team if you would like to talk about the cattle and leave absentee bids. We look forward to seeing you on sale day.

- Jeremie Ruble, Ruble Cattle Services



Jeremie Ruble & Family



406-581-7940 (cell)  
515-850-8741  
rublecattleservices@gmail.com  
www.rublecattleservices.com

## CONSIGNORS

### Back Roads Ranch

Steve and Sam Ahrens  
Sam, 715-684-9274 | Steve, 608-346-9257  
kacattle2@hotmail.com  
911 Good Hope Road, Leoma, TN 48468

### Brantley Cattle Co.

Larry Brantley, 904-610-6528  
avickers@floridainf.com  
Alicia Vickers, 904-440-6146  
avickers@floridainf.com  
452039 Old Dixie Highway, Callahan, FL 32011

### Cato Farm

Philip Cato, 678-687-5421  
jpcato10@yahoo.com  
2740 Lee Road 86, Waverly, AL 36879

### Chambers Farm

Daniel Chambers, 770-316-7632  
coach.danielchambers@gmail.com  
840 County Road 49, Ranburne, AL 36273

### Crossroads Cattle Co.

Rex Dunn, 931-993-5343  
rhdunn57@gmail.com  
238 Corders Crossroads Road  
Fayetteville, TN 37334

### David Ficken

256-508-6454  
david@huntsvilletractor.com  
248 Webster Road, Huntsville, AL 35811

### Elaine & Rocky Graham

Elaine Graham, 985-960-1950  
Elainegalanio@yahoo.com  
37341 Jack Crawford Rd., Pearl River, LA 70452

### Gibbs Farms

Bradley Gibbs, 404-904-2914  
gibbsfarms6@gmail.com  
2118 County Road 23, Ranburne, AL 36273

### Gingerich Family Farm

Luke and Joe Gingerich, 276-832-1265  
gfcfsimmental@gmail.com  
496 Cave Creek Trail, Jonesville, VA 24263

### Jared Werning Cattle

Jared Werning, 605-933-1661  
jared.werning@gmail.com  
Kassi Werning, 319-939-7476  
26920 413th Ave., Ethan, SD 57334

### Lonesome Pine Farm

Terry Bowen, 334-235-1275  
terrybowen740@gmail.com  
740 South Memorial Drive, Prattville, AL 36067

### Neal Bros.

Joe Neal, 812-881-9381  
Ed Neal, 812-910-0662  
nealbrotherscattle@gmail.com  
4812 N Neal Road, Bicknell, IN 47512

### One Penny Ranch

Bill and Penny Zimmerman  
C: 612-875-9509 H: 320-355-2191  
onepennyranch@yahoo.com  
17358 165TH Ave NE, Foley, MN 56329

### R & K Cattle Co.

Mark Ryals, 601-270-4577  
jdeere7210@yahoo.com  
1090 Churchwell Road, Hattiesburg, MS 39401

### River Creek Farms

Abram Mertz, 785-456-3986  
abram@livestockdirect.net  
1331 Poyntz Ave. Manhattan, KS 66502

### Rockhill Ranch

Rickey Nicholas, 601-818-1456  
rrnicholas1152@gmail.com  
1152 Rockhill to Brooklyn Rd., Purvis, MS 39475

### Salley Simmental

Billy Salley, 662-341-2847  
salleyb.bigpappa@gmail.com  
109 Alva Rd., Eupora, MS 39744

### Triple S Land & Cattle

Mark Smith, 601-310-6695  
Smith5785@bellsouth.net  
304 Moeller Rd., Picayune, MS 39466

### Young Brothers SimAngus

Clayton Young, 678-836-9538  
claytoneyoung28@gmail.com  
942 County Road 28, Ranburne, AL 36273



# ALABAMA & MISSISSIPPI Simmental Sale

## **SIMMENTAL • SIMANGUS • ANGUS**

BRED FEMALES, COW-CALF PAIRS, OPEN HEIFERS,  
BULLS & FROZEN GENETICS

## **SATURDAY, MAY 17, 2025**

1:00 PM CDT • Cullman Stockyard • Cullman, AL

### **SALE MANAGER**

Ruble Cattle Services  
Jeremie Ruble  
406-581-7940 / 515-231-3831  
1525 140th St. Corydon, IA 50060  
rublecattleservices@gmail.com

### **SALE LOCATION**

Cullman Stockyard  
75 Co Rd 1339  
Cullman, AL 35058

### **ACCOMMODATIONS**

La Quinta Inn & Suites by Wyndham Cullman  
256-775-9500 - Room block, \$166/night  
2054 St Joseph Dr NW, Cullman, AL 35058

### **INSPECTION OF CATTLE**

Cattle may be viewed at the sale site beginning  
at 12:00 PM on Friday, May 16, 2025. Prior to  
Friday cattle may be viewed at their  
respective farms.

### **HEALTH**

Interstate health papers will be furnished on all  
cattle selling.

### **TERMS & CONDITIONS**

All cattle will sell under the suggested sale  
terms and conditions of the American Simmen-  
tal Association.

### **TRUCKING**

Evan Bixby / 319-559-0167  
Brian Wyatt / 423-240-5533  
Tyler Diffey / 601-720-3634  
Truckers believed reliable will be available to  
assist you in shipping your purchases.

### **INSURANCE**

Jamie Secondino, American Livestock Insurance  
812-208-0956

### **SALE WEEKEND SCHEDULE**

#### **Friday, May 16, 2025**

12:00 pm - Dusk . . . . . Viewing of Sale Cattle  
6:00 pm . . . . . Social at the Branding Iron Steak House

#### **Saturday, May 17, 2025**

9:00 am . . . . . Viewing of Sale Cattle  
1:00 pm . . . . . Alabama & Mississippi Simmental Sale

### **SALE DAY PHONES**

Jeremie Ruble, *Ruble Cattle Services* . . . . . 406-581-7940  
Jeremie Ruble, *Ruble Cattle Services, alt. number* . . . 515-850-8741  
Marshall Ruble, *Ruble Cattle Services* . . . . . 515-231-3198

### **SALE REPRESENTATIVES**

Chad Stansberry, *Ringman* . . . . . 706-844-3389  
Billy Proffitt, *Ringman* . . . . . 270-407-8555  
Jacob Massey, *Ringman* . . . . . 931-607-2771  
Luke Mobley, *Auctioneer* . . . . . 205-270-0999

### **ABSENTEE BIDDING**

Bids may be accepted by sale representatives or sale managers.  
Sale day phone is 406-581-7940

### **SALE UPDATES**

We have made every attempt to supply the most current and accurate information available  
on the cattle being offered. Any updated or additional information made available at the  
sale will take precedence over previously printed material.

### **SALE ORDER**

A supplement sheet and sale order will be available sale day.

### **LIABILITY**

All persons who attend the sale do so at their own risk and neither owners, Ruble Cattle  
Services or Cullman Stockyard assumes any responsibility, legal or otherwise, for damages,  
accidents, theft, errors in the catalog or omissions. All cattle are at the purchaser's risk as  
soon as sold. Assistance will be offered in loading and/or shipment of cattle, but no risk is  
assumed by any group of individual associated with the sale.

### **ONLINE BIDDING**

DVAuction Tech Support . . . . . 402-316-5460  
Bid live online at [www.dvauction.com](http://www.dvauction.com). Information on page 13.

**DVAuction**  
Broadcasting Real-Time Auctions

### **ALABAMA SIMMENTAL ASSOCIATION**

Sam Russell, *President* . . . . . 334-301-0922  
Bradley Gibbs, *Vice-President* . . . . . 404-904-2914  
Amy Burgess, *Secretary/Treasurer* . . . . . 256-558-7443

### **MISSISSIPPI SIMMENTAL ASSOCIATION**

Todd Fenton, *President* . . . . . 601-498-4946  
Mark Smith, *MS Sale Coordinator* . . 601-310-6695  
Gene Boone, *Vice-President*  
Deena Branum, *Secretary* . . . . . 601-310-4440  
Tyson Moreno, *Treasurer* . . . . . 601-394-8848

Catalog designed by

**6 Generation 6**  
marketing  
[www.generation6.co](http://www.generation6.co)



# CHOICE OF HOMELANDER



**KBHR HOMELANDER J071 - SIRE OF LOTS 1A - 1G**



**RVR TYSON 429K - SERVICE SIRE**

**Lots 1A - 1G:** Ladies and Gentlemen gather around for the opportunity of a lifetime. The secret is out! KBHR HOMELANDER J071 is the king of all SimAngus bulls. In the first sale season sons topped Irvings, Gibbs Farms, Southern Superior and River Creek Farms. A bull mate to these heifers BLPF LANDMAN L21 was our all time high selling bull. He was selected as an AI and Herd sire for River Creek Farms which speaks volumes as they own his sire. The contending bidders were legendary Alabama Simmental breeders Gibbs Farms. We are offering pick of the 7 bred heifers sired by Homelander. To make the pick even better all seven heifers are bred to our new AI and herd sire RVR TYSON 429K who was the high selling bull in River Creeks 2024 annual production sale. Amazingly he is top 15% CE, top 30% BW, top 2% MARB and top 1% for WW, YW, ADG, API & TI. Never before in the history of this sale has a pick of animals been offered from the heart of the herd combining two breed leading bulls. All the work has been done. The calves inside these magnificent beasts will be the best of the best in all facets of the industry. It may pay for the whole shooting match if you offer it up and the female you will be selecting will be a top shelf donor cow. No other program has offered the pick of Homelander females. We are confident regardless of your pick you will be well on your way to prosperity! Come to Cullman to see these females!



**BLPF LANDMAN L21 - HOMELANDER SON**



**LOT 1A**

LONESOME PINE FARM

## 1A BLPF MISS CHLOE L3

BD: 9/14/23 / ASA#: 4356780 / Tattoo: L3 / 1/2 SM 1/2 AN  
Bred Heifer / Homozygous Polled / Homozygous Black

G A R HOME TOWN  
KBHR HOMELANDER J071  
KBHR MEDORA G132



GIBBS 1091Y HY DUL 7074T  
BLPF MISS ESSIE B19  
BLPF LUCKY TIME U10

CE	BW	WW	YW	MCE	Milk	MWW	Stay	Marb	BF	REA	API	TI
16.1	0.7	88.5	144.2	9.0	26.5	71.2	14.3	0.95	-0.002	0.74	172.9	102.3

AI'd to RVR TYSON (ASA# 4219089) on 12/3/24. PE to RVR TYSON (ASA# 4219089) from 1/8/25 to 3/23/25. Confirmed bred to PE date.



**LOT 1B**

LONESOME PINE FARM

## 1B BLPF MISS TINA L12

BD: 9/20/23 / ASA#: 4356772 / Tattoo: L14 / 5/8 SM 3/8 AN  
Bred Heifer / Homozygous Polled / Homozygous Black

G A R HOME TOWN  
KBHR HOMELANDER J071  
KBHR MEDORA G132



BLPF TOP CHOICE A6  
BLPF MISS EMPRESS C2  
SSF BLK HOLLY P506

CE	BW	WW	YW	MCE	Milk	MWW	Stay	Marb	BF	REA	API	TI
14.1	-0.6	86.4	143.1	8.5	24.2	68.1	14.6	0.97	-0.059	0.73	174.7	103.2

AI'd to RVR TYSON (ASA# 4219089) on 12/3/24. PE to RVR TYSON (ASA# 4219089) from 1/8/25 to 3/12/25. Confirmed bred to AI date.



# DAUGHTERS



**LOT 1C**



**LOT 1D**



**LOT 1E**



**LOT 1F**



**LOT 1G**

LONESOME PINE FARM

## 1C **BLPF MISS LYDIA L15**

BD: 9/3/23 / ASA#: 4356784 / Tattoo: L15 / 5/8 SM 3/8 AN  
Bred Heifer / Homozygous Polled / Homozygous Black

G A R HOME TOWN

KBHR HOMELANDER J071

KBHR MEDORA G132



LRS ELEVATE 213B

SVS FANCY FREE HFAC

SVS DIXIE LAND FANC

CE	BW	WW	YW	MCE	Milk	MWW	Stay	Marb	BF	REA	API	TI
14.6	4.1	111.8	180.7	8.4	28.7	85.1	14.2	0.54	-0.027	1.06	152.4	102.7

AI'd to TJ NORTH (ASA# 4217486) on 12/3/24. PE to RVR TYSON (ASA# 4219089) from 1/8/25 to 3/23/25. Confirmed bred to Tyson, PE date.

LONESOME PINE FARM

## 1E **BLPF MISS ELAINE L23**

BD: 9/19/23 / ASA#: 4356797 / Tattoo: L23 / 1/2 SM 1/2 AN  
Bred Heifer / Homozygous Polled / Homozygous Black

G A R HOME TOWN

KBHR HOMELANDER J071

KBHR MEDORA G132



WCM LMAN 59Y

BLPF LUCKY GIRL B13

LPF ELEGANTDESIGN OF 878

CE	BW	WW	YW	MCE	Milk	MWW	Stay	Marb	BF	REA	API	TI
10.7	1.1	90.0	147.3	6.5	24.2	69.5	14.6	0.71	-0.022	0.71	153.5	95.9

AI'd to RVR TYSON (ASA# 4217486) on 12/3/24. PE to RVR TYSON (ASA# 4219089) from 1/8/25 to 3/23/25. Confirmed bred to Tyson, PE date.

LONESOME PINE FARM

## 1G **BLPF MISS VIOLET L31**

BD: 9/20/23 / ASA#: 4356778 / Tattoo: L31 / 5/8 SM 3/8 AN  
Bred Heifer / Homozygous Polled / Homozygous Black

G A R HOME TOWN

KBHR HOMELANDER J071

KBHR MEDORA G132



BLPF TOP CHOICE A6

BLPF MISS MARY D7

CF508

CE	BW	WW	YW	MCE	Milk	MWW	Stay	Marb	BF	REA	API	TI
13.3	1.4	90.0	140.1	7.4	31.5	77.2	17.0	0.92	-0.060	1.15	173.6	103.1

AI'd to RVR TYSON (ASA# 4219089) on 12/3/24. PE to RVR TYSON (ASA# 4219089) from 1/8/25 to 3/23/25. Confirmed bred to AI date.

LONESOME PINE FARM

## 1D **BLPF MISS GINA L20**

BD: 9/16/23 / ASA#: 4356773 / Tattoo: L20 / 1/2 SM 1/2 AN  
Bred Heifer / Homozygous Polled / Homozygous Black

G A R HOME TOWN

KBHR HOMELANDER J071

KBHR MEDORA G132



TJ MAKERS MARK 215Y

JNR MISS SWEET MAKERS D01

JNR MISS SWEET INCENTIVE B08

CE	BW	WW	YW	MCE	Milk	MWW	Stay	Marb	BF	REA	API	TI
11.7	1.2	103.7	160.8	7.1	23.5	76.0	10.8	0.77	-0.002	0.74	154.3	104.8

AI'd to RVR TYSON (ASA# 4219089) on 12/3/24. PE to RVR TYSON (ASA# 4219089) from 1/8/25 to 3/23/25. Confirmed bred to AI date.

LONESOME PINE FARM

## 1F **BLPF MISS LEAH L25**

BD: 9/12/23 / ASA#: 4356790 / Tattoo: L25 / 1/2 SM 1/2 AN  
Bred Heifer / Homozygous Polled / Homozygous Black

G A R HOME TOWN

KBHR HOMELANDER J071

KBHR MEDORA G132



HOOK'S YELLOWSTONE 97Y

BLPF MISS GINNY G18

LPF MS GOOD WITCH Z22

CE	BW	WW	YW	MCE	Milk	MWW	Stay	Marb	BF	REA	API	TI
14.7	-1.3	89.0	135.1	8.5	23.5	67.8	17.7	0.82	-0.052	1.29	174.7	102.1

AI'd to RVR TYSON (ASA# 4219089) on 12/3/24. PE to RVR TYSON (ASA# 4219089) from 1/8/25 to 3/23/25. Confirmed bred to AI date.

# BID ONLINE

at [www.dvauction.com](http://www.dvauction.com)

# DVAuction

**BRED HEIFERS**





**LOT 2**



**LOT 3**

## 2 **BLPF MISS WILLOW L5**

LONESOME PINE FARM

BD: 9/28/23 / ASA#: 4356779 / Tattoo: L5 / PB SM  
Bred Heifer / Homozygous Polled / Homozygous Black

RUBYS TURNPIKE 771E  
RUBYS OUTER LIMITS 935G  
RUBYS LINDA 721E



WCM LMAN 59Y  
BLPF MISS DORIS B15  
BLPF RIGHT MOVES U15

CE	BW	WW	YW	MCE	Milk	MWW	Stay	Marb	BF	REA	API	TI
9.8	1.2	76.1	124.1	5.1	30.4	68.2	13.9	0.36	-0.072	1.05	139.4	85.0

AI'd to DAKOTA (ASA# 4225709) on 12/3/24. PE to RVR TYSON (ASA# 4219089) from 1/8/25 to 3/23/25. Confirmed bred to AI date. BLPF MISS WILLOW L5 is a purebred Simmental bred heifer sired by RUBYS OUTER LIMITS 935G a RUBYS TURNPIKE 771E son out of the dam of the great Quadrant bull RUBYS LINDA 721E. Willow is a large framed female stretched out in every direction and she is powerful. She sells Safe AI to KBHR DAKOTA L033 who is featured in this sale with a full page ad. This is a rare opportunity to buy a purebred bred to a purebred and the resulting calf will have EPDs and Indexes into the next stratusphere!

## 3 **BLPF MISS IVY L9**

LONESOME PINE FARM

BD: 10/18/23 / ASA#: 4356782 / Tattoo: L9 / 5/8 SM 3/8 AN  
Bred Heifer / Homozygous Polled / Homozygous Black

TJ FIRST CUT 1109C  
RLWF WRANGLER E35  
SSF BLK CAM X354



TJ FIRST CUT 1109C  
BLPF MISS NAOMI G15  
BLPF MISS MARY B12

CE	BW	WW	YW	MCE	Milk	MWW	Stay	Marb	BF	REA	API	TI
12.9	2.9	84.4	132.1	7.7	19.2	61.3	18.0	0.89	0.025	0.09	165.2	93.1

AI'd to TJ NORTH (ASA# 4217486) on 12/3/24. PE to RVR TYSON (ASA# 4219089) from 1/8/25 to 3/23/25. Confirmed bred to Tyson, PE date. BLPF MISS IVY L9 is a RLWF WRANGLER E35 who isn't just your ordinary herd bull. We selected him as the best bull from one of the Southern Excellence Sales which was the precursor sale to the Southern Superior Sale. He has stood the test of time. She sells safe in calf to RVR TYSON 429K.





**LOT 4**



**LOT 5**

## 4 **BLPF MISS MISSY L24**

LONESOME PINE FARM

BD: 10/27/23 / ASA#: 4356800 / Tattoo: L24 / 3/4 SM 1/4 AN  
Bred Heifer / Homozygous Polled / Homozygous Black

TJ FIRST CUT 1109C  
RLWF WRANGLER E35  
SSF BLK CAM X354



WCM LMAN 59Y  
BLPF MISS MAGGIE B11  
BLPF MAIN FOCUS

CE	BW	WW	YW	MCE	Milk	MWW	Stay	Marb	BF	REA	API	TI
12.5	-0.3	72.3	117.8	7.6	20.0	56.1	17.4	0.50	-0.010	0.39	144.9	81.3

AI'd to QUADRANT (ASA# 4135953) on 12/3/28. PE to RVR TYSON (ASA# 4219089) from 1/8/25 to 3/23/25. Confirmed bred to AI date. BLPF MISS MISSY L24 is loaded with quality and is named after the pet name for my wife. She's thick from end to end and has a lot of junk in the trunk but combines this with a pretty face and elegant front end. She sells bred to the hottest upcoming ACE accredited purebred Simmental bull in the land RUBYS QUADRANT 210K. This calf will be a purebred with great figures and awesome phenotype. Don't miss out on her. I'm sure she will be one I'll look back and regret selling but I always love to support this sale and working with RCS.

## 5 **BLPF MISS EVERLY L27**

LONESOME PINE FARM

BD: 11/7/23 / ASA#: 4356788 / Tattoo: L27 / 5/8 SM 3/8 AN  
Bred Heifer / Homozygous Polled / Homozygous Black

TJ FIRST CUT 1109C  
RLWF WRANGLER E35  
SSF BLK CAM X354



BLPF TOP CHOICE A6  
BLPF MISS BESSIE E4  
RLWF GRADUATE TOP CLASS Z149

CE	BW	WW	YW	MCE	Milk	MWW	Stay	Marb	BF	REA	API	TI
14.2	-1.3	73.9	115.4	8.5	24.4	61.3	16.5	0.61	-0.010	0.40	152.6	86.4

AI'd to TJ NORTH (ASA# 4217486) on 12/3/24. PE to RVR TYSON (ASA# 4219089) from 1/8/25 to 3/23/25. Confirmed bred to Tyson, PE date. BLPF MISS EVERLY L27 is another RLWF WRANGLER E35 but this time she is backed maternally to MCM TOP GRADE 018X & S D S GRADUATE 006X. Everly is deep bodied, sound and angular. She sells safe in calf to RVR TYSON 429K whose added frame and extreme growth and carcass combined with the great looks and maternal ability will be a winning combination.





6

## MS HESTIA L2

DAVID FICKEN

BD: 8/28/23 / ASA#: 4316465 / Tattoo: L2 / 3/4 SM 1/4 AN  
Bred Heifer / Polled / Black

HOOK'S EAGLE 6E  
TJ GOLD 274G  
TJ 12C

X

CONNEALY FINAL PRODUCT  
HESTIA D1  
BHR Z225

CE	BW	WW	YW	MCE	Milk	MWW	Stay	Marb	BF	REA	API	TI
10.7	0.5	76.3	115.8	6.9	23.9	61.5	16.7	0.35	-0.025	0.62	132.2	79.1

AI'd to MONEY MAKER J801 (ASA# 3978845) on 11/30/24. Don't miss this blazed faced bred heifer a TJ Gold daughter out of a Final Product cow a big volume female with a lot of thickness sell bred to Money Maker. My cattle always are better than my pictures in person. Please call Jeremie after he view them an he will tell you how good she is.



7

## SSS SHOCKED BREATH 705L

TRIPLE S LAND & CATTLE

BD: 5/9/23 / ASA#: 4288274 / Tattoo: 705L / 5/8 SM 1/4 BR 1/8 AN  
Bred Heifer / Polled / Heterozygous Black

SSS HALLELUJAH 468X  
SSS REDEMPTION 670H  
SSS SCARLET B 428U

X

CCR WIDE RANGE 9005A  
TLCI DEEP BREATH H025  
TLCI DEEP BREATH A303

CE	BW	WW	YW	MCE	Milk	MWW	Stay	Marb	BF	REA	API	TI
13.2	0.6	56.4	78.9	7.9	23.8	51.8	10.6	0.09	-0.078	0.88	100.9	61.5

AI'd to LCDR Progressive 106G (ASA# 3646242) on 10/18/24. Black baldy replacement heifer bred to top bull to produce quality cattle of the finest kind. Her calves will be top dollar bred like she is; Redemption x Wide Range, backed by Timberland Simmentals cow family. Due August 9 for fall calf.



8

## GFCF WILDFLOWER L55

GINGERICH FAMILY FARM

BD: 9/7/23 / ASA#: 4277898 / Tattoo: L55 / PB SM  
Bred Heifer / Homozygous Polled / Homozygous Black

HHS MR ENTOURAGE 867B  
LCDR RESERVE 210J  
LCDR MS ECHO 43E

X

HOOK'S BROADWAY 11B  
GFCF PETUNIA G32  
AH2 MS DONNA B430

CE	BW	WW	YW	MCE	Milk	MWW	Stay	Marb	BF	REA	API	TI
7.3	3.8	89.3	133.8	5.1	22.0	66.6	15.7	0.18	-0.051	1.06	128.1	83.0

AI'd to Gibbs Signature 2510K (ASA# 4120968) on 11/29/24. Confirmed bred to AI date. L55 is a powerful heifer. She comes straight from our replacement heifers. The LCDR Reserve sired cattle are just built right and are the first ones that catch your eye when you walk into the pasture. L55 has been a eye catcher since a very young age. Her dam has a impressive record of weaning great calves and settling 4 out 5 times to AI. Vet checked safe to Gibbs Signature 2510K



9

## GFCF MS RIGHT L58

GINGERICH FAMILY FARM

BD: 9/8/23 / ASA#: 4277880 / Tattoo: L58 / 5/8 SM 3/8 AN  
Bred Heifer / Homozygous Polled / Homozygous Black

HOOK'S EAGLE 6E  
GIBBS 0201H TURBO  
GIBBS 5319C LOUISE Y534

X

CONNEALY RIGHT ANSWER 746  
GFCF MS RIGHT J96  
GRABERS STARDUST D56

CE	BW	WW	YW	MCE	Milk	MWW	Stay	Marb	BF	REA	API	TI
16.1	-2.3	81.1	133.3	7.3	27.6	67.9	17.8	0.39	-0.061	0.68	152.9	88.5

AI'd to Gibbs Kingpin 1140J (ASA# 3997162) on 11/29/24. PE to Gibbs Highwayman 3130L (ASA# 4284752) from 12/6/24 to 1/15/25. Confirmed bred to PE dates. We dug deep into the heart of our replacements with this one. L58 is a attractive female with a solid epd profile. L58 is sired by Gibbs 0201H Turbo. Turbo's first daughters are raising their first calves and they are doing a tremendously good job. Deep bodied, great uttered, and have great mothering instincts. Vet check confirms she will be calving to Gibbs Highwayman 3130L one of the most exciting bulls to surface in the past year!





**LOT 10A**



**LOT 10B**

BACK ROADS RANCH - STEVE AND SAM AHRENS

## 10A BACKROADS LADY LYDIA L322

BD: 9/12/23 / ASA#: 4367079 / Tattoo: L322 / PB SM  
Bred Heifer / Polled / Black

WS ALL-AROUND Z35  
OMF EPIC E27  
OMF TIME LESS B100



CCR COWBOY CUT 5048Z  
BACKROADS LYDIA H85  
TSF LYDIA C85

CE	BW	WW	YW	MCE	Milk	MWW	Stay	Marb	BF	REA	API	TI
13.1	0.5	89.0	128.8	7.4	21.6	66.0	16.9	0.23	-0.055	0.81	145.6	88.5

AI'd to CLRWTR CLEAR Advantage H4G (ASA# 3858588) on 12/1/24. Confirmed bred to AI date with a heifer calf.

We are offering your choice of two Epic daughters. Both born September of 2023 and both bred to CLRWTR Clear Advantage a known calving ease bull with a lot of grow power in his progeny. L322 is a daughter out of my favorite Cowboy Cut daughter. She has brood cow genetically and phenotypically built in. Deep thick made females with clean front ends run in her cow family. Her dam and grand dam both have beautiful udders and wean off powerful calves each year. She is bred Nov. 23 and due September 2. L321 is out of our always popular black baldy cow family that milks amazingly well. Epic Promise goes back to Clearwater Farm Promise cow family that bases itself to Ebony's Joy. She is a tad bit fancier fronted than her 1/2 sister and has that baldy head you love to look at. Bred Dec 14 and due on Sept 22. We love our OMF Epic progeny here at Back Roads and feel you will too. These two half sibs have cow power behind them. Since we couldn't make up our mind which heifer to offer we will let you take your pick.

BACK ROADS RANCH / STEVE AND SAM AHRENS

## 10B BACKROADS EPIC PROMISE L321

BD: 9/5/23 / ASA#: 4367078 / Tattoo: L321 / PB SM  
Bred Heifer / Polled / Black

WS ALL-AROUND Z35  
OMF EPIC E27  
OMF TIME LESS B100



HTP SVF IN DEW TIME  
BACKROADS PROMISE TIME H595F  
BACKROADS PROMISES MADE

CE	BW	WW	YW	MCE	Milk	MWW	Stay	Marb	BF	REA	API	TI
14.1	-0.1	79.1	115.3	6.4	19.5	59.0	17.4	0.12	-0.061	0.71	138.9	80.4

AI'd to CLRWTR CLEAR ADVANTAGE H4G (ASA# 3858588) on 12/13/24. Confirmed bred to AI date.

ROCKHILL RANCH

## 11 ROCKHILL GLORY GIRL LR35

BD: 10/12/23 / ASA#: 4280661 / Tattoo: LR35 / 5/8 SM 3/8 AN  
Bred Heifer / Polled / Homozygous Black

NLC COW BOSS 160C  
X/L COW MAKER  
GW MISS PREM BEEF 457B



GW SCC END ZONE 245D  
ROCKHILL GLORY GIRL FR24  
ROCKHILL MS P RIDER E500

CE	BW	WW	YW	MCE	Milk	MWW	Stay	Marb	BF	REA	API	TI
16.0	-2.2	69.5	100.7	7.2	25.1	59.8	23.7	0.66	-0.057	0.46	171.5	86.7

AI'd to Rockhill SFG Mr Comfort (ASA# 2735603) on 11/29/24. Confirmed bred. A solid black herd building heifer bred to a calving ease SimAngus bull for a Homo Black September calf. Glory Girl is in the top 20% for CW, MARB and API and comes from the heart of the replacement pen.



**NLC COW BOSS 160C - PATERNAL GRANDSIRE OF LOTS 11 & 12**

**BRED HEIFERS**



**BID ONLINE**  
at [www.dvauction.com](http://www.dvauction.com)  
**DVAuction**



**KLER KAT 2016K - DAM OF LOT 13**



**IRON CREEK ANTHEM 14J - SIRE OF LOT 14**



**KLER HALLEY 2038K - DAM OF LOT 15**

ROCKHILL RANCH

## 12 ROCKHILL MISS LUCY LR37

BD: 10/29/23 / ASA#: 4280658 / Tattoo: LR37 / 5/8 SM 3/8 AN  
Bred Heifer / Polled / Homozygous Black

NLC COW BOSS 160C  
X/L COW MAKER  
GW MISS PREM BEEF 457B

**X**

REDHILL 823Y 145 213B  
REDHILL 213B 140C 148F  
RHF-SFG 225Z 021Z 140C

CE	BW	WW	YW	MCE	Milk	MWW	Stay	Marb	BF	REA	API	TI
14.8	-1.7	62.7	100.8	6.3	21.6	53.0	16.6	0.50	-0.040	0.51	145.5	78.3

*AI'd to Buf Crk Nice' N Easy T189 (ASA# 2698625) on 1/3/25. Confirmed bred.* Another solid Homo black bred heifer from the replacement pen AI'd to a calving ease Red Angus sire for an October calf. The calf will be 3/8 SM and 1/2 AR and 1/8 AN which should provide plenty of hybrid vigor for extra growth.

BRANTLEY CATTLE CO

## 13 KLER MS M45

BD: 1/14/24 / ASA#: 4361088 / Tattoo: M45 / PB SM  
Bred Heifer / Homozygous Polled / Homozygous Black

HHS MR 847D  
KBHR REVOLUTION H071  
WS MISS SUGAR C4

**X**

CDI TRUSTEE 387F  
KLER KAT 2016K  
KMJ/K-LER MS ROBUST D336

CE	BW	WW	YW	MCE	Milk	MWW	Stay	Marb	BF	REA	API	TI
11.0	3.0	100.5	149.8	5.2	19.6	69.7	16.4	0.41	-0.056	1.24	153.0	96.9

*AI'd to ADV COMPASS L3574 (ASA# 4212198) on 4/17/25. Confirmed bred, due to 1/26/25.* KLER MS M45 represents the next generation of high quality growth, purebred genetics. This KBHR Revolution daughter is backed by the maternal power of a CDI Trustee 387F sired dam. A Quick look into her performance data reveals top 2% CW, top 3% REA, WW, top 10% YW, TI, top 15% ADG and top 20% MARB.

BRANTLEY CATTLE CO.

## 14 BCFL CINDA ANTHEM 120M

BD: 1/5/24 / ASA#: 4492669 / Tattoo: 120M / PB SM  
Bred Heifer / Homozygous Polled / Homozygous Black

HOOK'S EAGLE 6E  
IRON CREEK ANTHEM 14J  
KBHR MATRON OF HONOR F202

**X**

CLRS GUARDIAN 317G  
BC/C CINDA 119J  
RUBYS CINDA 9G19

CE	BW	WW	YW	MCE	Milk	MWW	Stay	Marb	BF	REA	API	TI
13.9	-0.7	90.6	142.5	6.3	24.8	70.1	16.4	0.58	-0.067	1.36	170.1	101.2

*AI'd to BASIN JAMESON 1076 (AAA# 20071781), sexed female semen, on 4/17/25. PE to BCFL D336 CK TARGET 657L (ASA# 4305132) from 4/18/25 to 5/13/25. Confirmed bred to AI date with a heifer calf, due 1/26/26.* BCFL CINDA ANTHEM 120M lines up all that is good about the future of the Simmental breed, she combines phenomenal type and kind with a set of data that is impressive all the way across the board. To sum up her EPD's she ranks top quarter or better of the registry for 11 different and conversely acting traits. She too is homozygous polled and black, and is backed by the BC/C CINDA 119J donor dam that makes her presence felt on the high sellers list every chance she gets.

BRANTLEY CATTLE CO.

## 15 KLER MS L4

BD: 12/25/23 / ASA#: 4361092 / Tattoo: L4 / PB SM  
Bred Heifer / Homozygous Polled / Homozygous Black

HHS MR 847D  
KBHR REVOLUTION H071  
WS MISS SUGAR C4

**X**

MR SR 71 RIGHT NOW E1538  
KLER HALLEY 2038K  
KLER HALLEY 941G

CE	BW	WW	YW	MCE	Milk	MWW	Stay	Marb	BF	REA	API	TI
13.3	2.0	101.9	159.4	6.8	18.3	69.1	16.4	0.32	-0.067	1.09	154.8	97.5

*AI'd to Basin Jameson 1076 (AAA# 20071781), sexed female semen, on 4/17/25. PE to BCFL D336 CK TARGET 657L (ASA# 4305132) from 4/18/25 to 5/13/25. Confirmed bred to AI date with a heifer calf, due 1/27/26.* With both a data set and pedigree that screams growth there is little to question about her potential to inject potent performance in her progeny. KLER MS L4 is backed by an impressive MR SR 71 RIGHT NOW E1538 dam and reads top 2% YW, top 3% WW, top 4% ADG, top 5% DOC, CW, top 10% TI, top 15% REA.



BRANTLEY CATTLE CO.

**16 BCFL CINDAS ANTHEM 183M**BD: 1/7/24 / ASA#: 4492671 / Tattoo: 183M / PB SM  
Bred Heifer / Homozygous Polled / Homozygous Black

HOOK'S EAGLE 6E

IRON CREEK ANTHEM 14J  
KBHR MATRON OF HONOR F202

CLRS GUARDIAN 317G

BC/C CINDA 119J  
RUBYS CINDA 9G19

CE	BW	WW	YW	MCE	Milk	MWW	Stay	Marb	BF	REA	API	TI
13.9	-0.9	88.6	138.7	6.6	24.8	69.1	15.3	0.44	-0.059	1.43	160.0	96.9

AI'd to EXAR Triple PLAAAY 3763B (AAA# 20696890) on 4/17/25. PE to BCFL D336 CK TARGET 657L (ASA# 4305132) from 4/18/25 to 5/13/25. Confirmed bred to AI date, due 1/17/26.

An extra big bodied, head turning, brood cow prospect that leaves nothing to the imagination when it comes to impressive center body shape and dimension. If you get to comparing on density and volume then I can promise it will be hard to find one that trumps this impressive specimen. Being homozygous polled, homozygous black, and a purebred sure doesn't hurt anything either!

**EXAR TRIPLE PLAAAY 3763B - SERVICE SIRE OF LOT 16****17 MS JUDY M2**

DAVID FICKEN

BD: 8/21/24 / ASA#: 4482156 / Tattoo: M2 / 1/2 SM 1/2 AN  
Open Heifer / Polled / Black

HOOK'S EAGLE 6E

TJ GOLD 274G  
TJ 12C

730

CE	BW	WW	YW	MCE	Milk	MWW	Stay	Marb	BF	REA	API	TI
15.7	-3.1	61.4	94.3	9.4	20.2	50.7	10.8	0.62	0.002	0.39	141.3	80.7

This 1/2 blood heifer is super correct with a lot of eye appeal with a deep rib and flank. She is nice enough to show. Super EPD's too BW -3.1, WW 61.3, YW 94.3, MILK 21.3, API 141.6.

**LOT 17****18 MS ANNA M4**

DAVID FICKEN

BD: 8/30/24 / ASA#: 4482158 / Tattoo: M4 / 1/2 SM 1/2 AN  
Open Heifer / Polled / Black

HOOK'S EAGLE 6E

TJ GOLD 274G  
TJ 12C

8262

CE	BW	WW	YW	MCE	Milk	MWW	Stay	Marb	BF	REA	API	TI
15.0	-2.6	62.8	96.5	8.9	20.2	51.5	10.8	0.62	0.002	0.39	139.9	80.8

Very nice TJ Gold daughter out of a purebred angus cow really nice fronted female that will make a super 1/2 blood cow

**LOT 18****19 4CF MISS CANDY M701**

CHAMBERS FARM

BD: 2/8/24 / ASA#: 4333854 / Tattoo: M701 / 3/4 SM 1/4 AN  
Open Heifer / Homozygous Polled / Homozygous Black

CLRS GUARDIAN 317G

GIBBS 1091J GUARDIAN  
GIBBS 8040F LOUISE Y534

GW TRIPLE CROWN 018C

4CF MISS CANDY J007  
JNR MISS OFF THE CHARTS G13

CE	BW	WW	YW	MCE	Milk	MWW	Stay	Marb	BF	REA	API	TI
13.2	0.0	94.9	151.2	8.2	23.9	71.3	16.0	0.60	-0.026	1.05	157.6	98.2

M701 was purchased a calf at side from last year's sale out of a GW Triple Crown cow that is a slick-hided, easy keeper with a great udder. M701 is a powerful open heifer with extra muscle and bone that should raise heavy calves. Top 20% API and top 10% TI

**LOT 19****BRED & OPEN HEIFERS**





FFS JUST IN TIME J501 - SIRE OF LOT 20

## 20 SALLEYS SWEET MELEISA M03

SALLEY SIMMENTAL

BD: 3/24/24 / ASA#: 4381157 / Tattoo: M03 / 3/4 SM 1/4 AN  
Open Heifer / Homozygous Polled / Black

SSC SHELL SHOCKED 44B  
FFS JUST IN TIME J501  
FFS GIGI G5016



SVF STEEL FORCE S701  
RWA JASMINE-ET  
JAUERFREIGHLINER786 1245

CE	BW	WW	YW	MCE	Milk	MWW	Stay	Marb	BF	REA	API	TI
15.2	-0.3	63.7	93.4	5.8	14.2	49.1	9.6	0.12	-0.050	0.50	107.3	66.5

A stout made heifer with flashy chrome ready to breed to bull of your choice



SVS VIRGINIA BELLE ASHA - MATERNAL GRANDDAM OF LOT 21

## 21 SVS JITTERBUG MGAH

CROSSROADS CATTLE CO.

BD: 3/24/24 / ASA#: 4340479 / Tattoo: MGAH / 3/4 SM 1/4 AN  
Open Heifer / Polled / Black

G A R HOME TOWN  
KBHR HOMELANDER J071  
KBHR MEDORA G132



CCR COWBOY CUT 5048Z  
SVS MADEMOSIELLE GAHA  
SVS VIRGINIA BELLE ASHA

CE	BW	WW	YW	MCE	Milk	MWW	Stay	Marb	BF	REA	API	TI
13.1	1.5	101.0	158.4	7.3	24.2	75.4	11.7	0.63	-0.083	1.39	151.0	101.6

Jitterbug was part of a pair we purchased last spring out of the Shenandoah Valley sale. She is sired by one of the most popular Simangus bulls in the breed, Homelander! Her epds are Genomically Enhanced and she sells open and ready to breed to the bull of your choice!



TEHAMA PATRIARCH F028 - SIRE OF LOT 22

## 22 CROSSROADS MADAME PRIDE M430

CROSSROADS CATTLE CO.

BD: 4/20/24 / AAA#: 21100936 / Tattoo: M430 / PB AN  
Open Heifer / Polled / Black

S S NIAGARA Z29  
TEHAMA PATRIARCH F028  
TEHAMA ELITE BLACKBIRD D826



BALDRIDGE CHUCKWAGON C302  
CROSSROADS MADAME PRIDE 2030  
S A C MADAME PRIDE 9903

CED	BW	WW	YW	CEM	Milk	MW	Marb	RE	Fat	\$M	\$B	\$C
15	-2.1	69	126	14	28	59	.70	.78	.055	49	151	275

M430 is backed by our favorite Angus cow family. The Madame Prides are always top end producers for us. We believe this this heifer will be no different sired by the popular Patriarch.

**BID ONLINE**  
at [www.dvauction.com](http://www.dvauction.com)  
**DVAuction**





CHAMBERS FARM

## 23 GIBBS 9440G FANCY 6138D

BD: 9/22/19 / ASA#: 3716407 / Tattoo: 9440G / 1/2 SM 1/2 AN  
Bred Cow / Homozygous Polled / Homozygous Black

CCR COWBOY CUT 5048Z

TJ FIRST CUT 1109C

TJ MISS UPWARD Z5



RLWF PROPHET MARGIN 1393

GIBBS 6138D FANCY 4422B

GIBBS 4422B FANCY 2782Z

CE	BW	WW	YW	MCE	Milk	MWW	Stay	Marb	BF	REA	API	TI
9.8	1.3	80.4	130.2	7.6	31.9	72.2	17.9	0.59	0.031	0.59	147.0	86.5

PE to Bridges Upscale 9523 (AAA# 19715923) from 8/1/24 to 1/8/25. Confirmed bred.  
GIBBS 9440G was purchased from Gibbs Farms as a bred heifer is 2021. We retained her first calf out of TJ Stone Cold as our herd bull and are still using him today. She is a powerful well structured cow that has produced great calves for us. Pasture exposed to purebred Angus bull AAA#19715923 from 8/01/2024 to 1/08/2025. Calving date will be updated before sale.



**LOT 23**

CHAMBERS FARM

## 24 GIBBS 9749G DIXIE 4199B

BD: 11/2/19 / ASA#: 3716732 / Tattoo: 9749G / 5/8 SM 3/8 AN  
Bred Cow / Homozygous Polled / Homozygous Black

GIBBS 2905Z MR CLEAN

BGIBBS 5381C AJAX

PVF-S 3A11 DAISY 0X13



MR NLC ENTREPRENEUR 1227

GIBBS 4199B DIXIE S346

GIBBS S346 DIXIE 37M

CE	BW	WW	YW	MCE	Milk	MWW	Stay	Marb	BF	REA	API	TI
11.6	1.6	61.4	91.5	4.0	20.6	51.3	15.7	0.49	-0.039	0.60	130.7	72.1

PE to Chambers Stone Cold J140 (Reg# N/A) from 8/1/24 to 1/8/25. Confirmed bred.  
GIBBS 9749G was purchased as a bred heifer at Gibbs Farms 2021 sale. She has been a great producer for us. Pasture exposed to Chambers Stone Cold J140 from 08/01/2024 to 01/08/2025. Updated calving information at sale date.



**BGIBBS 5381C AJAX - SIRE OF LOT 24**

R & K CATTLE CO.

## 25 R AND K'S RELIANT

BD: 9/5/20 / ASA#: 3910517 / Tattoo: H38 / 3/8 SM 5/8 AN  
Cow-Calf Pair / Polled / Black

G A R SURE FIRE

G A R RELIANT

G A R DESTINATION N244



SVF STEEL FORCE S701

MISS JRW 5066A

LIMESTONE STAR W803

CE	BW	WW	YW	MCE	Milk	MWW	Stay	Marb	BF	REA	API	TI
13.7	1.4	85.4	142.5	4.6	23.8	66.8	15.7	0.55	-0.016	0.84	146.1	87.6

25A: Heifer Calf / ASA#: Pending / DOB: 5/29/25 / Tattoo: Pending

Act. BW: 73# / Sired by R AND K'S RELIANT (ASA#: 3910517)

Sells open and ready to breed. Here is a great IR Capitalist Daughter we hate to part with. Top EPD profile and raises a top calf's every year. she has a lot of life left to keep producing top calves. Look her up on sale day as she want disappoint. Coming with a Gar Reliant heifer by her side you want go wrong with this pair.



**G A R RELIANT - SIRE OF LOT 25**



## COW-CALF PAIRS



**MR NLC UPGRADE U8676 - PATERNAL GRANDSIRE OF LOT 26**

### 26 R AND K'S H218

R & K CATTLE CO.

BD: 9/14/20 / ASA#: 3995941 / Tattoo: H218 / 1/2 SM 1/2 AN  
Cow-Calf Pair / Homozygous Polled / Black

MR NLC UPGRADE U8676  
RYALS GRADE UP  
LIMESTONE ROYAL LASS S600

X

WCM FOCUS 52Z  
WCM MS 717E  
WCM LULU 301A

CE	BW	WW	YW	MCE	Milk	MWW	Stay	Marb	BF	REA	API	TI
13.3	0.2	69.4	112.2	7.7	20.0	54.9	12.0	0.40	-0.028	0.54	127.6	76.7

26A: Bull Calf / ASA#: Pending / DOB: 5/28/25 / Tattoo: Pending

Act. BW: 74# / Sired by R AND K'S RELIANT (ASA#: 3910517)

Sells open and ready to breed. A great cow with good udder. she's produced some top calves for R&K Cattle. Due to her being out of our calving period she will be a benefit for who ever gets her.



**LOT 27**

### 27 GIBBS 0489H MTN 7249E

YOUNG BROTHERS SIMANGUS

BD: 9/19/20 / ASA#: 3883200 / Tattoo: 0489H / 1/2 SM 1/2 AN  
Cow-Calf Pair / Homozygous Polled / Homozygous Black

BALDRIDGE BRONC  
GIBBS 8281F BAREBACK  
WS MISS ALL DAKOTA B208

X

GIBBS 3133A MOUNTAINEER  
GIBBS 7249E MTN 7121T  
GIBBS 7121T HY BET 3885

CE	BW	WW	YW	MCE	Milk	MWW	Stay	Marb	BF	REA	API	TI
13.8	-1.7	70.6	105.5	9.4	21.6	56.6	20.6	0.53	0.008	0.24	154.3	82.1

27A: Heifer Calf / ASA#: 4494292 / DOB: 3/9/25 / Tattoo: 5N8

Act. BW: 58# / Sired by YBS STOCKMARKET 3L2 (ASA#: 4183956)

Sells open and ready to breed. So much good to talk about in this cow. Bought from Gibbs Farms as a bred heifer. Calved in our 60 day window each time. Keeps her condition year round and has great milk with the best udder one will see. Fancy heifer calf at side is her best one yet. She has a balanced set of EPDs, boasts a 166 API, and has some added muscle. She is sired by our red SimAngus bull, YBS STOCKMARKET 3L2.



**G A R SUNRISE - SIRE OF LOT 28**

### 28 G A R SUNBEAM

R & K CATTLE CO

BD: 8/25/16 / ASA#: 3527990 / Tattoo: 7006 / PB AN  
Cow-Calf Pair / Polled / Homozygous Black

MCC DAYBREAK  
G A R SUNRISE  
G A R OBJECTIVE R227

X

G A R INGENUITY  
G A R INGENUITY 3132  
G A R 28 AMBUSH N340

CE	BW	WW	YW	MCE	Milk	MWW	Stay	Marb	BF	REA	API	TI
16.8	-1.1	91.7	155.9	11.1	26.0	71.6	10.6	1.13	0.022	1.04	205.2	125.4

28A: Bull Calf / ASA#: Pending / DOB: 3/21/25 / Tattoo: Pending

Act. BW: 72# / Sired by R AND K'S RELIANT (ASA#: 3910517)

Sells open and ready to breed. This is a cow we hate to let go!! she has got out of our calving period we don't want to hold her open until this fall. She has a great bull calf at side out of a Gar Reliant son that we have raised that has produced great calves for the last couple of years. Look her up on sale day you want be disappointed in this pair.



**KBHR DIFFERENT DEAL K150 - SIRE OF LOT 29A**

### 29 SVS DREAM WEAVER HFWB

CROSSROADS CATTLE CO.

BD: 10/13/20 / ASA#: 3795374 / Tattoo: HFWB / PB SM  
Cow-Calf Pair / Polled / Black

HOOK'S YELLOWSTONE 97Y  
KOCH BIG TIMBER 685D  
KOCH MS HOOKS BOY

X

CCR COWBOY CUT 5048Z  
SVS SHENANDOAH SUNSHINE FWMB  
SVS DELILAH WMBB

CE	BW	WW	YW	MCE	Milk	MWW	Stay	Marb	BF	REA	API	TI
11.0	0.0	79.1	116.7	7.2	19.1	58.6	20.8	0.27	-0.050	0.56	149.7	83.3

29A: Bull Calf / ASA#: 4505214 / DOB: 2/28/25 / Tattoo: 5236N

Act. BW: 72# / Sired by KBHR Different Deal K150 (ASA#: 4104268)

Sells open and ready to breed. This SVS female is super efficient and sound. We hate to see this cow go but she will be a true asset to some one. Her bull calf by KBHR Different Deal calf has been very impressive since birth.



CROSSROADS CATTLE CO.

**30 KBHR MS PROVIDENCE K371**BD: 4/30/22 / ASA#: 4104487 / Tattoo: K371 / PB SM  
Cow-Calf Pair / Homozygous Polled / Heterozygous BlackKBHR HIGH ROAD E283  
KBHR PROVIDENCE G055  
BAR CK MS X38 106Z**X**TRPH RRR NIGHTFORCE B30  
KBHR E092  
KBHR A181

CE	BW	WW	YW	MCE	Milk	MWW	Stay	Marb	BF	REA	API	TI
12.6	-1.4	76.0	110.9	7.5	20.6	58.5	18.2	0.57	-0.050	0.77	164.4	91.2

30A: Bull Calf / ASA#: 4500316 / DOB: 3/6/25 / Tattoo: 5315N

Act. BW: 78# / Sired by Schooley Krown 28K (ASA#: 4115546)

Sells open and ready to breed. K371 done an outstanding job with her first calf and this being her second leads me no reason to believe different. She is super quite and would make a great addition. We are a primarily fall calving program so for that reason she is available for your appraisal.

**SCHOOLEY KROWN 28K - SIRE OF LOT 30A**

CROSSROADS CATTLE CO.

**31 RLD ALLEY L308**BD: 1/7/23 / ASA#: 4177290 / Tattoo: L308 / PB SM  
Cow-Calf Pair / Polled / Heterozygous BlackCNS PAYS TO DREAM T759  
SC PAY THE PRICE C11  
LLSF URABYDOLL U194**X**JF MILESTONE 999W  
WHF/PRS/HPF ALLEY 247Y  
WHF SIERRA 245S

CE	BW	WW	YW	MCE	Milk	MWW	Stay	Marb	BF	REA	API	TI
6.5	3.7	77.9	113.0	4.7	16.6	55.5	13.6	0.09	-0.098	0.86	113.1	73.4

31A: Heifer Calf / ASA#: 4500318 / DOB: 3/6/25 / Tattoo: N528

Act. BW: 72# / Sired by Schooley Lilbit 887L (ASA#: 4256912)

Sells open and ready to breed. L308 is a direct daughter to the prolific red donor Alley 247Y. Her heifer calf is sired by the age advantage bull we are offering in the sale.

**WHF/PRS/HPF ALLEY 247Y - DAM OF LOT 31****Watch & bid online for FREE at****DVAuction**  
Broadcasting Real-Time Auctions**Can't make the sale? Bid from home with DV Auction's "real-time" internet bidding service!****Buying online is as easy as 1, 2, 3...**

1. Create an account at [www.dvauction.com](http://www.dvauction.com) under the "register" tab
2. Apply for bidding approval by clicking on the "details" tab at least 24 hours prior to the auction-a DV representative will notify you once you have been approved
3. Tune in for the sale and make your purchases!

After the sale, contact the sale manager or owner to arrange transportation and payment. **High speed internet** is required for successful bidding-be sure to check the lag-time monitor in the top left corner to ensure real-time broadcasts.**Proxy Bidding**-if you can't make time to watch the sale, register a proxy bid and let our system represent your bid while you're away. Look for the "proxy bid" tab on the auction listing, and fill in your maximum bids. We'll handle the rest!**Having troubles?** During the auction, you can type a message to the operator at any time for assistance. Our full-time support team can also always be reached at (402) 474-5557.**DVAuction**  
Broadcasting Real-Time Auctions**Full Service Livestock Marketing**

Video - Photography - The Stock Exchange - Ring Service - Banner Ads - Onsite Viewing Service



## 32 CUR HAYMORE K691

BD: 10/12/22 / ASA#: 4176390 / Tattoo: K691 / PB SM  
Bull / Homozygous Polled / Homozygous Black

LCDR IMPACT 134F  
RFS HEYDAY H48  
E42



HOOK'S BEACON 56B  
HOOK'S GRACIE 47G  
HOOK'S EVELYN 310E

CE	BW	WW	YW	MCE	Milk	MWW	Stay	Marb	BF	REA	API	TI
7.7	1.4	95.6	147.9	4.8	24.7	72.4	17.6	0.30	-0.073	1.33	147.0	93.6

CUR HAYMORE K691 was a past high indexing high selling bull from the North Alabama Bull Evaluation & Verified Heifer Sale. His sire RFS HEYDAY H48 is sired by an LCDR IMPACT 134 the highest performing son of the immortal and now deceased WS MISS SUGAR C4. He was bred by RYDEEN FARMS SIMMENTAL'S who are known across the country for being outstanding people and breeders of high-quality performance Simmentals. On his dam's side he is sired by CLRS CONSTITUTION 311 C a son of J BAR J NIGHTRIDE 225Z and traces back to Clear Springs best cow line HOOK'S XCELLENCE 87X. This 3-year-old bull comes with experience, and he will sire nice sized calves at birth that will grow like a pasture with 4 inches of rain and fresh spread litter. If you are looking for a bull who knows how to do his job and will put pounds on the ground, you need him. The only reason we are selling him is we are in the process of becoming cooperators for River Creek and we plan on buying front end bulls from them to clean up the cows we AI to their front-end semen sires. Our loss is your gain!

CROSSROADS CATTLE CO.

## 33 SCHOOLEY LILBIT 887L

BD: 2/22/23 / ASA#: 4256912 / Tattoo: 887L / PB SM  
Bull / Homozygous Polled / Homozygous Black

LCDR FAVOR 149F  
SCHOOLEY JUDGMENT 68J  
HOOK'S GABRIELLA 30G



BCLR CASH FLOW C820  
SCHOOLEY MISS 420B 074H  
CLRS BEAUTY QUEEN 420 B

CE	BW	WW	YW	MCE	Milk	MWW	Stay	Marb	BF	REA	API	TI
14.9	-3.7	76.3	116.9	7.4	19.8	57.9	22.0	0.47	-0.062	0.60	174.8	92.3

887L is a Judgment son that we purchased out of the 2024 Schooley Production sale. He was used on heifers last spring as well as this fall. The calves out of spring heifers have all come unassisted with plenty of vigor. We decided to bring one of our best for your appraisal as we feel like he will work in many different programs. 887L goes back to the Beauty Queen donor that has done so much in the breed. Find him on sale day if you are in the market for an age advantage bull.

DAVID FICKEN

## 34 CLEAR ADVANTAGE L4

BD: 9/6/23 / ASA#: 4316467 / Tattoo: L4 / 3/4 SM 1/4 AR  
Bull / Polled / Heterozygous Black

LLSF VANTAGE POINT F398  
CLRWR CLEAR ADVANTAGE H4G  
WS MISS SUGAR C4



ANDRAS FUSION R236  
MS MELISSA H3  
BHR 2222

CE	BW	WW	YW	MCE	Milk	MWW	Stay	Marb	BF	REA	API	TI
11.0	1.3	75.0	112.2	5.5	26.4	63.8	11.8	0.38	-0.063	0.45	122.1	78.4

Here is a wide sprung deep bodied bull with thickness from front to rear, strong topped. He is heterozygous black, is mother is out of the Red Angus bull Fusion R236. If you want to add volume and muscling to calves he will get it done.

DAVID FICKEN

## 35 CLEAR ADVANTAGE L5

BD: 9/14/23 / ASA#: 4316468 / Tattoo: L5 / 3/4 SM 1/4 AN  
Bull / Polled / Black

LLSF VANTAGE POINT F398  
CLRWR CLEAR ADVANTAGE H4G  
WS MISS SUGAR C4



S A V BRILLIANCE 8077  
MS VALIOSA G3  
BF MS VALIOSA E104

CE	BW	WW	YW	MCE	Milk	MWW	Stay	Marb	BF	REA	API	TI
14.3	-0.2	78.4	121.7	6.8	26.2	66.1	13.6	0.40	-0.035	0.68	136.3	83.5

Another Clear Advantage son, that is a bigger frame bull still with a lot of muscle shape, nicely balance bull that can be used on heifers with no problem check out his EPD's BW -0.1, WW 79.0, YW 122.0, MILK 26.5, API 135.9. DON'T MISS THAT THE CLEAR ADVANTAGE BULL IS OUT OF THE WS MISS SUGAR C4 COW



LCDR IMPACT 134F - PATERNAL GRANDSIRE OF LOT 32



CLRS BEAUTY QUEEN 420 B - MATERNAL GRANDDAM OF LOT 33



LOT 34



LOT 35



R &amp; K CATTLE CO.

**36 R AND K'S MR. NEFF**BD: 10/7/17 / ASA#: 3441475 / Tattoo: E16B / 1/2 SM 1/2 AN  
Bull / Homozygous Polled / BlackTRIPLE C SINGLETARY S3H  
CCR COWBOY CUT 5048Z  
CCR MS 4045 TIME 7322T**X**CONNEALY FINAL PRODUCT  
BRITT PRIDE 320  
DEER VALLEY PRIDE 4126

CE	BW	WW	YW	MCE	Milk	MWW	Stay	Marb	BF	REA	API	TI
11.6	0.5	81.0	125.3	8.3	25.4	65.4	17.6	0.50	-0.007	0.43	144.7	85.3

Here is a bull that goes back to Cowboy Cut on the top side and W/C United on the bottom. this bull will work perfectly on cows or heifers. He is very well made and ready to turn out. Look him up on sale day he wont disappoint.

**CCR COWBOY CUT 5048Z - SIRE OF LOT 36**

SALLEY SIMMENTAL

**37 SALLEYS BIG MAN L18**BD: 11/26/23 / ASA#: 4318383 / Tattoo: L18 / PB SM  
Bull / Polled / Homozygous BlackHPF QUANTUM LEAP Z952  
WLE COPACETIC E02  
CMFM JOY 02ZB**X**YARDLEY HIGH REGARD W242  
SALLEYS MS REGARDS H01  
WOODLAWN ZENA

CE	BW	WW	YW	MCE	Milk	MWW	Stay	Marb	BF	REA	API	TI
11.3	1.9	75.2	114.9	4.2	14.5	51.9	9.5	0.10	-0.077	0.82	114.5	74.9

Young virgin Copacetic bull, moderate frame and good disposition, ready to work

**WLE COPACETIC E02 - SIRE OF LOT 37**

BRANTLEY CATTLE CO.

**38 BCFL SWEETNESS 582M**BD: 1/1/24 / ASA#: 4492658 / Tattoo: 582M / PB SM  
Bull / Homozygous Polled / Homozygous BlackTJ HEISMAN 388F  
KBHR SWEETNESS H185  
WS MISS SUGAR C4**X**CLRS GUARDIAN 317G  
BC/C MISS GRANITE  
RUBYS MISS GRANITE 9161G

CE	BW	WW	YW	MCE	Milk	MWW	Stay	Marb	BF	REA	API	TI
11.2	-1.0	81.3	131.0	5.3	24.6	65.1	18.4	0.59	-0.019	0.76	167.1	94.8

The closer on this set of flush brothers is a long, stout, smoothed shouldered as you can make a herd sire. Loaded with plenty of middle, muscle shape, and balance, is for sure as "Sweet" as they come! In addition to his type, this guy if top for carcass traits and growth on his genetic profile. Progeny of both sexes will move an operation forward. 582M is both homozygous back and homozygous polled. he ranks top 5% MARB, top 10% API, TI, ADG, STAY, top 15% YW, CW, top 20% WW, and top 25% MWW, and top 35% BW.

**WS MISS SUGAR C4 - PATERNAL GRANDDAM OF LOT 38**

BRANTLEY CATTLE CO.

**39 BCFL TJ GUARDIAN 125M**BD: 1/1/24 / ASA#: 4492649 / Tattoo: 125M / 3/4 SM 1/4 AN  
Bull / Homozygous Polled / Homozygous BlackHOOK'S BEACON 56B  
CLRS GUARDIAN 317G  
CLRS ALWAYS XCELLENT**X**TJ MAIN EVENT 503B  
TJ 202K  
TJ 22

CE	BW	WW	YW	MCE	Milk	MWW	Stay	Marb	BF	REA	API	TI
12.0	2.0	104.2	158.9	5.1	21.7	73.8	15.6	0.29	-0.057	1.25	137.8	93.4

BCFL TJ Guardian 125M brings a little different pedigree to the table for an outcross to a breeding program. A high percentage herd bull prospect that is angular and correct in his skeleton, and comes with added eye appeal. 125M is a good-looking bull that will catch plenty of attention on sale day. 125M ranks top 5% WW, top 10% YW, CW, REA, and top 20% TI, MWW, STAY.

**CLRS GUARDIAN 317G - SIRE OF LOT 39**




**KBHR HONOR H060 - SIRE OF LOT 40**

**LCDR IMPACT 134F - SIRE OF LOT 41**

**TJ HEISMAN 388F - PATERNAL GRANDSIRE OF LOT 42**

**KBHR SWEETNESS H185 - SIRE OF LOT 43**

BRANTLEY CATTLE CO

## 40 BCFL HONOR 438M

 BD: 1/1/24 / ASA#: 4492656 / Tattoo: 438M / PB SM  
 Bull / Homozygous Polled / Homozygous Black

 HOOK'S BEACON 56B  
 KBHR HONOR H060  
 WS MISS SUGAR C4

**X**

 GW PREDESTINED 701T  
 HHS MISS 836Z  
 HHS MISS 861U

CE	BW	WW	YW	MCE	Milk	MWW	Stay	Marb	BF	REA	API	TI
17.4	-3.1	80.1	126.3	9.9	21.0	61.0	17.8	0.61	-0.011	0.65	178.1	97.5

Here is more than just a blaze faced calving ease bull, 438M carries extra mass and dimension, while still being smooth built and angular through his front one third. This son of KBHR Honor H060 with a modest 71 lb. birth weight leads us to believe your heifers will be spellbound with a bull like 438M roaming their pasture. he is both homozygous black and homozygous polled and ranks top 5% API, top 10% TI, CE, MARB, top 15% BW, MCE, STAY, top 20% YW, top 25% WW, top 35% MWW, CW. Suitable for use on heifers.

BRANTLEY CATTLE CO.

## 41 BCFL IMPACT 375M

 BD: 1/2/24 / ASA#: 4492653 / Tattoo: 375M / PB SM  
 Bull / Homozygous Polled / Homozygous Black

 CDI MAINLINE 265D  
 LCDR IMPACT 134F  
 WS MISS SUGAR C4

**X**

 HHS MR ENTOURAGE 867B  
 LCDR MS JENNIFER 18J  
 LCDR MS ECHO 43E

CE	BW	WW	YW	MCE	Milk	MWW	Stay	Marb	BF	REA	API	TI
9.8	2.4	103.6	165.3	6.4	17.9	69.7	14.3	0.46	-0.084	1.08	154.7	101.4

A special creature for combining phenotypic quality with genetic excellence. 375M an eye-catching young stud is sharp in design while still carrying plenty of power and shape. The options are limitless with a young bull like 375M and how he can make an IMPACT on your herd. He ranks among the breed elite for many traits. Top 1% WW, YW, top 2% ADG, top 3% CW, top 4% TI, top 10% DOC, REA.

BRANTLEY CATTLE CO

## 42 BCFL SWEETNESS 428M

 BD: 1/2/24 / ASA#: 4492655 / Tattoo: 428M / PB SM  
 Bull / Homozygous Polled / Homozygous Black

 TJ HEISMAN 388F  
 KBHR SWEETNESS H185  
 WS MISS SUGAR C4

**X**

 CLRS GUARDIAN 317G  
 BC/C MISS GRANITE  
 RUBYS MISS GRANITE 9161G

CE	BW	WW	YW	MCE	Milk	MWW	Stay	Marb	BF	REA	API	TI
11.9	0.4	95.1	153.8	6.0	24.6	72.0	22.1	0.67	-0.043	0.78	183.7	103.9

Look in as we showcase a set of flush brothers to KBHR Sweetness H185. As his name implies KBHR Sweetness 427M combines a multitude of sweet elegant emotions as you gaze upon him both in person and on paper. 427M embodies the sweet essence of high-class herd sire prospect. Long bodied and loaded with shape 427M will be favorite in the sale pen. the genetic power in this lad is apparent when you study how he compares for growth and carcass. 427M is both Homozygous black and homozygous polled and ranks top 5% MARB, top 10% API, TI, ADG, STAY, top 15% YW, CW, top 20% WW, and top 25% MWW.

BRANTLEY CATTLE CO

## 43 BCFL SWEETNESS 428M

 BD: 1/2/24 / ASA#: 4492655 / Tattoo: 428M / PB SM  
 Bull / Homozygous Polled / Homozygous Black

 TJ HEISMAN 388F  
 KBHR SWEETNESS H185  
 WS MISS SUGAR C4

**X**

 CLRS GUARDIAN 317G  
 BC/C MISS GRANITE  
 RUBYS MISS GRANITE 9161G

CE	BW	WW	YW	MCE	Milk	MWW	Stay	Marb	BF	REA	API	TI
11.9	0.4	95.1	153.8	6.0	24.6	72.0	22.1	0.67	-0.043	0.78	183.7	103.9

BCFL Sweetness 428M leads this group for high growth genetics, coupling that with upper tier marbling, API and Terminal Index. Balanced in his design with the characteristics you expect in a herd sire. 428M carries shape and dimension at and a 1145 lb yearling weight. Backed by top-end Donor BC/C Miss Granite matron on the bottom side of his pedigree to add to his maternal prowess. A quality individual with loads of genetic potential. He is homozygous black and homozygous polled and ranks top 5% MARB, top 10% API, TI, ADG, STAY, top 15% CW, YW, top 20% WW, top 25% MWW.



BRANTLEY CATTLE CO.

## 44 BCFL HONOR 600M

BD: 1/3/24 / ASA#: 4492659 / Tattoo: 600M / PB SM  
Bull / Homozygous Polled / Homozygous Black

HOOK'S BEACON 56B  
KBHR HONOR H060  
WS MISS SUGAR C4



GW PREDESTINED 701T  
HHS MISS 836Z  
HHS MISS 861U

CE	BW	WW	YW	MCE	Milk	MWW	Stay	Marb	BF	REA	API	TI
17.0	-2.3	84.3	135.7	9.8	21.0	63.1	20.1	0.55	-0.038	0.91	180.2	98.2

The calving ease, carcass quality driven bull of the pen, BCFL Honor 600M is smooth in his build and carries himself with herd bull stature. 600M is deep bodied and built like a stock bull with an eye catching blaze face. His genetics read on paper with more power, posting elite figures for growth, gain, marbling, and carcass. Tie into proven genetics backed by a phenomenal cow. 600M ranks top 5% API, top 10% TI, CE, MARB, top 15% BW, MCE, STAY, top 20% YW, ADG, and top 25% WW. Suitable for use on heifers.


**LOT 44**

BRANTLEY CATTLE COMPANY

## 45 BCFL GUARDIAN 738M

BD: 1/5/24 / ASA#: 4492661 / Tattoo: 738M / PB SM  
Bull / Homozygous Polled / Homozygous Black

HOOK'S BEACON 56B  
CLRS GUARDIAN 317G  
CLRS ALWAYS XCELLENT



LCDR PROGRESSIVE 106G  
TJ 444K  
ASR LITTLE DESI H0303

CE	BW	WW	YW	MCE	Milk	MWW	Stay	Marb	BF	REA	API	TI
15.2	-1.0	89.8	137.3	7.1	22.1	66.9	16.6	0.61	-0.052	1.03	173.0	101.1

Deep, Proportional, and with the look of a masculine herd bull, 738M hits all the talking points you seek in your next herd sire. Another product of the flush of CLRS Guardian 317G to the rising star TJ 444K, these standouts are making their mark on the breeding program producing cons like 738M and his brother 748M. He was pounds heavy at weaning, mashing the scales heavy at 872 lb. and is a high growth bull genetically, that still combines calving ease and carcass into his profile. He is both homozygous black and homozygous polled. He ranks top 2% TI, top 4% API, top 5% WW, CW, 10% CE, MARB, YW, top 15% ADG, MWW, REA, top 30% MCE, STAY. Suitable for use on heifers.


**LCDR PROGRESSIVE 106G - MATERNAL GRANDSIRE OF LOT 45**

BRANTLEY CATTLE CO.

## 46 BCFL REVOLUTION 534M

BD: 1/15/24 / ASA#: 4492657 / Tattoo: 534M / PB SM  
Bull / Homozygous Polled / Homozygous Black

HHS MR 847D  
KBHR REVOLUTION H071  
WS MISS SUGAR C4



HOOK'S BEACON 56B  
KBHR E197  
BAR CK MS X38 106Z

CE	BW	WW	YW	MCE	Milk	MWW	Stay	Marb	BF	REA	API	TI
14.1	-2.6	74.8	107.7	8.5	21.9	59.2	20.4	0.65	0.003	0.62	176.1	93.5

A blazed-faced powerhouse from end to end, BCFL Revolution 534M is the definition of a true power bull. You will love the mass and muscle 534M carries on a strong, sound frame. These KBHR Revolution H071 progeny are shaking things up with their quality, and 534M is no exception. If you love this mating and seek a curve bending EDP profile, 534M will fit the bill. He is Homozygous black and homozygous polled. He ranks top 5% MARB, top 10% API, TI, STAY, top 20% REA, top 25% MCE, CW, top 30% BW, DOC, and top 35% CE, WW.


**KBHR REVOLUTION H071 - SIRE OF LOT 46**





BACK ROADS RANCH/ STEVE AND SAM AHRENS

## 47 BACKROADS NO RULES M403

 BD: 2/2/24 / ASA#: 4367159 / Tattoo: M403 / 3/4 SM 1/4 AN  
 Bull / Homozygous Polled / Heterozygous Black

 WS PROCLAMATION E202  
**KBHR BOLD RULER H152**  
 BAR CK MS X38 106Z

 WHF INSIGHT C224  
**BACKROADS RED G325**  
 KENCO MISS LOOKOUT D325

CE	BW	WW	YW	MCE	Milk	MWW	Stay	Marb	BF	REA	API	TI
16.2	-1.9	70.3	119.1	8.7	23.2	58.3	17.8	0.33	-0.017	0.67	144.3	79.0

This bull has a lot of good about him. Beginning with his CE and BW EPDs. If you want a thick muscled, clean fronted bull with known calving easy in his pedigree this bull M403 is the one for you. He has the known and loved 770P cow family backing that you have to appreciate a few generations back. We aquired this cow family from Kenco Farms in 2018 and have retained quite a few of the 770P based progeny for our herd. The mother of this bull is one of those daughters and is a solid red moderate size female with a high udder score that keeps her and her family line in the herd. He combines so many good things making him an quite the optimal herd sire. He will be an assest to any program.

CROSSROADS CATTLE CO.

## 48 CRDS MAKITA M420

 BD: 2/22/24 / ASA#: 4442815 / Tattoo: M420 / 3/4 SM 1/4 AN  
 Bull / Polled / Black

 CDI INNOVATOR 325D  
**CLRWTR GAME CHANGER H4A**  
 WS MISS SUGAR C4

 OMF EPIC E27  
**SCHOOLEY MISS 919G 258K**  
 SCHOOLEY MISS 904Z 919G

CE	BW	WW	YW	MCE	Milk	MWW	Stay	Marb	BF	REA	API	TI
11.3	1.8	80.3	126.6	5.6	23.7	64.4	17.1	0.41	-0.052	0.86	138.2	82.6

M420 is a complete made prospect that is extremely docile. He has been an easy developing bull that will sire calves the same way. Game Changer cattle have always done well for us.

SALLEY SIMMENTAL

## 49 SALLEYS SHAMROCK M02

 BD: 2/28/24 / ASA#: 4381159 / Tattoo: M02 / PB SM  
 Bull / Homozygous Polled / Homozygous Black

 SSC SHELL SHOCKED 44B  
**FFS JUST IN TIME J501**  
 FFS GIGI G5016

 HOOK'S BROADWAY 11B  
**KCC DANNY 99E**  
 MAGGLE'S DANNY Z318

CE	BW	WW	YW	MCE	Milk	MWW	Stay	Marb	BF	REA	API	TI
10.1	1.3	73.4	111.0	4.6	23.1	59.8	14.9	0.27	-0.061	0.58	132.9	78.9

moderate frame young virgin bull, good disposition and good genetics going back to donor cow Jestress 9015 cow

ELAINE &amp; ROCKY GRAHAM

## 50 C/R PRO XCEED M72

 BD: 3/30/24 / ASA#: 4374944 / Tattoo: M72 / 5/8 SM 3/8 AN  
 Bull / Homozygous Polled / Homozygous Black

 CCR BOULDER 1339A  
**GIBBS 8127F PROPEL**  
 GIBBS 6705D ADM 1125Y

 RC XCEED 063D  
**GIBBS 8540F LILAC 5782C**  
 GIBBS 5782C LILAC 2591Z

CE	BW	WW	YW	MCE	Milk	MWW	Stay	Marb	BF	REA	API	TI
12.8	-2.1	66.1	106.1	8.0	25.3	58.3	17.5	0.78	-0.038	0.46	162.1	87.7

Stout SimAngus bull ready for service. 5/8 x 3/8, heavy muscled and gentle. We purchased Mr Jerry Cameron's cows last year and M72 was beside his dam in group. We have been more than pleased with our venture into the SimAngus business and Mr Jerry started us out right!

ELAINE &amp; ROCKY GRAHAM

## 51 C/R PRO PATHFINDER M68

 BD: 4/4/24 / ASA#: 4374943 / Tattoo: M67 / 1/2 SM 1/2 AN  
 Bull / Polled / Black

 CCR BOULDER 1339A  
**GIBBS 8127F PROPEL**  
 GIBBS 6705D ADM 1125Y

 WCM PATHFINDER 63Z  
**TJSAC FOCUS 22E**  
 990

CE	BW	WW	YW	MCE	Milk	MWW	Stay	Marb	BF	REA	API	TI
15.6	-2.7	58.1	87.8	9.5	23.0	51.9	16.7	0.55	-0.037	0.50	148.1	77.5

Stout 1/2 x 1/2 SimAngus bull ready for cows. Calving ease, growth, maternal and carcass traits make him and his 1/2 sibling M72 logical choice for serious cattlemen to put in their pasture for future profits! No holes in either bulls quality.





**GIBBS 9047G LOUISE Y534 - LOT 52 DONOR**



**GIBBS CULMINATION  
SON OF 9047G**



**GIBBS PROSPERITY 3125L  
SON OF 9047G**



**GIBBS 9114G ESSENTIAL  
SIRE OF LOT 52 EMBRYOS**

## 52 GIBBS 9047G LOUISE Y534 EMBRYOS

Donor Dam: BD: 9/1/19 / ASA#: 3717074 / Tattoo: 9047G / 3/4 SM 1/4 AN  
Homozygous Polled / Homozygous Black

GIBBS 7382E BROAD RANGE  
GIBBS 9114G ESSENTIAL  
GIBBS 7153E STAR 3136A



GIBBS 3133A MOUNTAINEER  
GIBBS 9047G LOUISE Y534  
SSF BLK LOUISE Y534

Purebred Simmental Planned Mating Projected EPDs

CE	BW	WW	YW	MCE	Milk	MWW	Stay	Marb	BF	REA	API	TI
15.5	-1.3	92.3	155.2	10.0	35.6	81.7	19.0	0.64	-0.01	0.98	182.5	104.6

Embryos by Gibbs 9114G Essential (ASA# 3716905). Selling 5 Conventional embryos with a guarantee of two pregnancies.

GIBBS FARMS

This cow has quickly become one of our favorite cows We're thrilled to present an exceptional opportunity: 5 conventional embryos, backed by a guarantee of two pregnancies. This remarkable cow has rapidly become one of our prized highlights here at Gibbs Farms. A direct daughter of the illustrious Louise Y534, she carries the same breathtaking appearance as her mother.

Her production record is nothing short of outstanding, with her first two calves—Gibbs Culmination and Gibbs Prosperity 3125L—commanding top prices at our sales over the past two years. This marks the inaugural offering of embryos from her, making it a unique and exciting chance for discerning breeders.

Essential, our esteemed sire, needs no introduction. He is celebrated for his exceptional traits, including calving ease, docility, and remarkable growth. As one of the most sought-after studs in the breed, he proudly holds the number 3 spot in registrations. Don't miss out on this extraordinary opportunity to enhance your herd with these exceptional embryos!





**GIBBS 0143H F185 F185 - LOT 53 DONOR**



**GIBBS HIGHWAYMAN 3130L  
SIRE OF LOT 53 EMBRYOS**



**GIBBS CULMINATION  
SIRE OF LOT 54 EMBRYOS**



**BGIBBS 2392K HANOI CLRS0110H - LOT 54 DONOR**

GIBBS FARMS

## 53 GIBBS 0143H F185 F185 EMBRYOS

Donor Dam: BD: 9/3/20 / ASA#: 3882861 / Tattoo: 0143H / 1/2 SM 1/2 AN  
Homozygous Polled / Homozygous Black

KBHR HOMELANDER J071  
GIBBS HIGHWAYMAN 3130L  
GIBBS 0105H MABELLE 6123D



RC XCEED 063D  
GIBBS 0143H F185 F185  
FSCR BET F185

5/8 SM 3/8 AN Planned Mating Projected EPDs

CE	BW	WW	YW	MCE	Milk	MWW	Stay	Marb	BF	REA	API	TI
13.0	0.8	96.4	158.4	8.1	26.4	74.8	17.6	1.13	-0.02	0.53	189.3	110.3

Embryos by Gibbs Highwayman 3130L (ASA# 4284752). Offering five conventional embryos, guaranteed to result in two pregnancies. Our search for a highly productive cow in the Gibbs herd led us to the 0143H cow, a SimAngus female known for her exceptional udder quality and desirable EPD profile, which makes her elite. She has been mated with the \$30,000 standout, GIBBS HIGHWAYMAN 3130L, creating an ideal combination. We expect these embryos to continue pushing the boundaries of excellence.

GIBBS FARMS

## 54 BGIBBS 2392K HANOI CLRS0110H EMBRYOS

Donor Dam: BD: 9/11/22 / ASA#: 4120953 / Tattoo: 2392K / 3/4 SM 1/4 AN  
Homozygous Polled / Homozygous Black

LBRS GENESIS G69  
GIBBS CULMINATION  
GIBBS 9047G LOUISE Y534



GIBBS 9114G ESSENTIAL  
BGIBBS 2392K HANOI CLRS0110H  
CLRS HANOI 0110H

Purebred Simmental Planned Mating Projected EPDs

CE	BW	WW	YW	MCE	Milk	MWW	Stay	Marb	BF	REA	API	TI
14.3	-0.4	99.6	162.5	8.5	28.2	77.9	18.7	0.85	-0.02	1.12	192.6	112.1

Embryos by Gibbs Culmination (ASA# 4120425). Selling 5 conventional embryos with a guarantee of 2 pregnancies. This cow boasts a royal pedigree; her dam is a full sister to the ABS bull, CLRS Homeland, and she was mated to Essential. This highly productive young donor is one to watch. We have several full siblings to this flush that are freshly weaned, and they are sure to be highlights of the sale. The breeding emphasizes outstanding growth, carcass quality, and visual appeal. This cow is sure to leave a significant impact on our herd. We are offering some of the newest and freshest genetics that we believe will be game changers for years to come. Culmination is the outcome of Genesis's best son, known for his superior coat quality suited for the Southeast, and is backed by the impressive 9047G cow.



GINGERICH FAMILY FARM

## 55 GIBBS 7153E STAR 3136A EMBRYOS

Donor Dam: BD: 9/7/17 / ASA#: 3404752 / Tattoo: 7153E / PB SM  
Homozygous Polled / Homozygous Black

KBHR HOMELANDER J071  
GIBBS HIGHWAYMAN 3130L  
GIBBS 0105H MABELLE 6123D



HOOK'S BROADWAY 11B  
GIBBS 7153E STAR 3136A  
GIBBS 3136A STAR 0589X

3/4 SM 1/4 AN Planned Mating Projected EPDs

CE	BW	WW	YW	MCE	Milk	MWW	Stay	Marb	BF	REA	API	TI
9.6	1.7	98.5	158.0	6.3	29.4	78.9	18.0	0.78	-0.03	0.9	172.5	104.8

Embryos by Gibbs Highwayman 3130L (ASA# 4284752). Selling 3 conventional embryos. Guaranteeing 1 pregnancy if implanted by a certified embryologist. Embryos available sale day from seller. Its not very often you get the opportunity to purchase eggs from a dam of a popular AI sire (Gibbs Essential). She has impeccable foot shape, is super eye appealing, and a baldy to boot. Can you even make one with a more attractive neck? She is mated up to what we think to be one of the very best bulls to surface in a while Gibbs Highwayman 3130L



GIBBS 7153E STAR 3136A  
DONOR DAM OF LOT 55 EMBRYOS



SIRE

ONE PENNY RANCH - BILL & PENNY ZIMMERMAN

## 56 ONE PENNY KINDNESS K7 EMBRYOS

Donor Dam: BD: 3/9/22 / ASA#: 4118097 / Tattoo: K7 / PB SM  
Homozygous Polled / Homozygous Black

SCHOOLEY HAGGARD A411H  
TRIF KIRK 224K  
KBHR DEBUTANTE H113



HOOK'S GALILEO 210G  
ONE PENNY KINDNESS K7  
HOOK'S ELAINA 210E

Purebred Simmental Planned Mating Projected EPDs

CE	BW	WW	YW	MCE	Milk	MWW	Stay	Marb	BF	REA	API	TI
17.8	-2.5	84.8	127.4	10.6	26.0	68.4	20.6	1.07	-0.05	0.59	205.5	109.3

Embryos by TRIF Kirk 224K (ASA# 4115583). Selling 3 conventional, number one embryos. Guaranteeing 1 pregnancy if implanted by a certified embryologist. Embryos stored at Nichols Cryo-Genetics, Maxwell, Iowa. A unique and rare opportunity to bring the exciting, but little known, TRIF Kirk 224K into your program! Kirk is deceased with very little semen available. This mating of TRIF Kirk with the proven donor, One Penny Kindness K7, reads like a glossary of foundation pedigrees - with Hook's Galileo, Schooley Haggard, Hook's Bozeman, and KBHR Debutante H113 on the front end. They offer the right numbers with the right phenotype, and maternal power combined with carcass excellence. You need to go back four generations to find Beacon, and then only once in the entire pedigree. And, to sweeten the deal, in the RightChoice evaluation, both TRIF Kirk and One Penny Kindness are "G+", and Kirk is an "ACE". Study the pedigrees and the numbers and make your own comparisons. This is the real deal.



TRIF KIRK 224K - SIRE OF LOT 56 EMBRYOS

ONE PENNY RANCH - BILL & PENNY ZIMMERMAN

## 57 ONE PENNY JASMINE J210 EMBRYOS

Donor Dam: BD: 10/10/21 / ASA#: 4053744 / Tattoo: J210 / PB SM  
Homozygous Polled / Homozygous Black

HOOK'S BEACON 56B  
CLRS GUARDIAN 317G  
CLRS ALWAYS XCELLENT



HOOK'S GALILEO 210G  
ONE PENNY JASMINE J210  
HOOK'S ELAINA 210E

Purebred Simmental Planned Mating Projected EPDs

CE	BW	WW	YW	MCE	Milk	MWW	Stay	Marb	BF	REA	API	TI
16.7	-1.7	91.7	137.9	9.1	22.5	68.3	19.2	0.79	-0.04	0.93	190.8	106.6

Embryo by CLRS Guardian 317G (ASA# 3563436). Selling 3 conventional, number one embryos. Guaranteeing 1 pregnancy if implanted by a certified embryologist. Embryos stored at Nichols Cryo-Genetics, Maxwell, Iowa. It has been proven over and over that Guardian x Galileo (or Galileo x Guardian) just flat out works. Add a the chance for a beautiful, symmetrical blaze face, and you can imagine what this mating might do. One Penny Jasmine J210 x CLRS Guardian 317G - there is not a hole in the projected numbers on this mating with twelve EPDs and Indexes in the top 25% of the breed. Note: There is fertility built in with the Jasmine donor. She is a flushmate sister to One Penny Kindness K7 - both had successful conventional flushes at 11 months of age!



ONE PENNY JASMINE J210 - LOT 57 DONOR



# BUILT FOR VOLUME



SEMEN \$22/UNIT FOR 20 UNITS OR MORE. \$40/UNIT FOR 10 UNITS OR LESS.  
AVAILABLE THROUGH HIGHWAY OWNERS AND ALLIED GENETIC RESOURCES.

# HIGHWAYMAN



Gibbs 0105H Mabelle 6123D - Dam of Highwayman.

## GIBBS HIGHWAYMAN 3130L

ASA 4284752 BD 09-03-2023 5/8 SM 3/8 AN

KBHR Homelander J071 x Gibbs 0105H Mabelle 6123D

CE	BW	WW	YW	ADG	MILK	MWW	STAY	DOC	CW	MARB	RE	\$API	STI
14	0.6	108	172	0.40	21	75	19	16	57	1.22	1.01	201	120

HIGHWAYMAN is guaranteed to add mass, power, carcass, and volume to your next calf crop.

Semen is priced to be Built for Volume sales. ONLY \$22 a unit for over 20 units of semen. \$40 a unit for 10 units or less.

The \$27,000 sale highlight from the 2024 Gibbs Farms sale and has already seen extensive use out of the Gibbs, Gingerich, and Hunigan herds. Truly one of the most exciting bulls to sell in some time!

## 58 GIBBS HIGHWAYMAN 3130L

Selling 10 units of conventional semen. Semen available sale day or stored at Gingerich Family Farm.

## HIGHWAYMAN OWNERS

### GINGERICH FAMILY FARMS

Luke Gingerich 276-832-1265  
Joe Gingerich 276-870-9563

### HUNIGAN SIMMENTAL

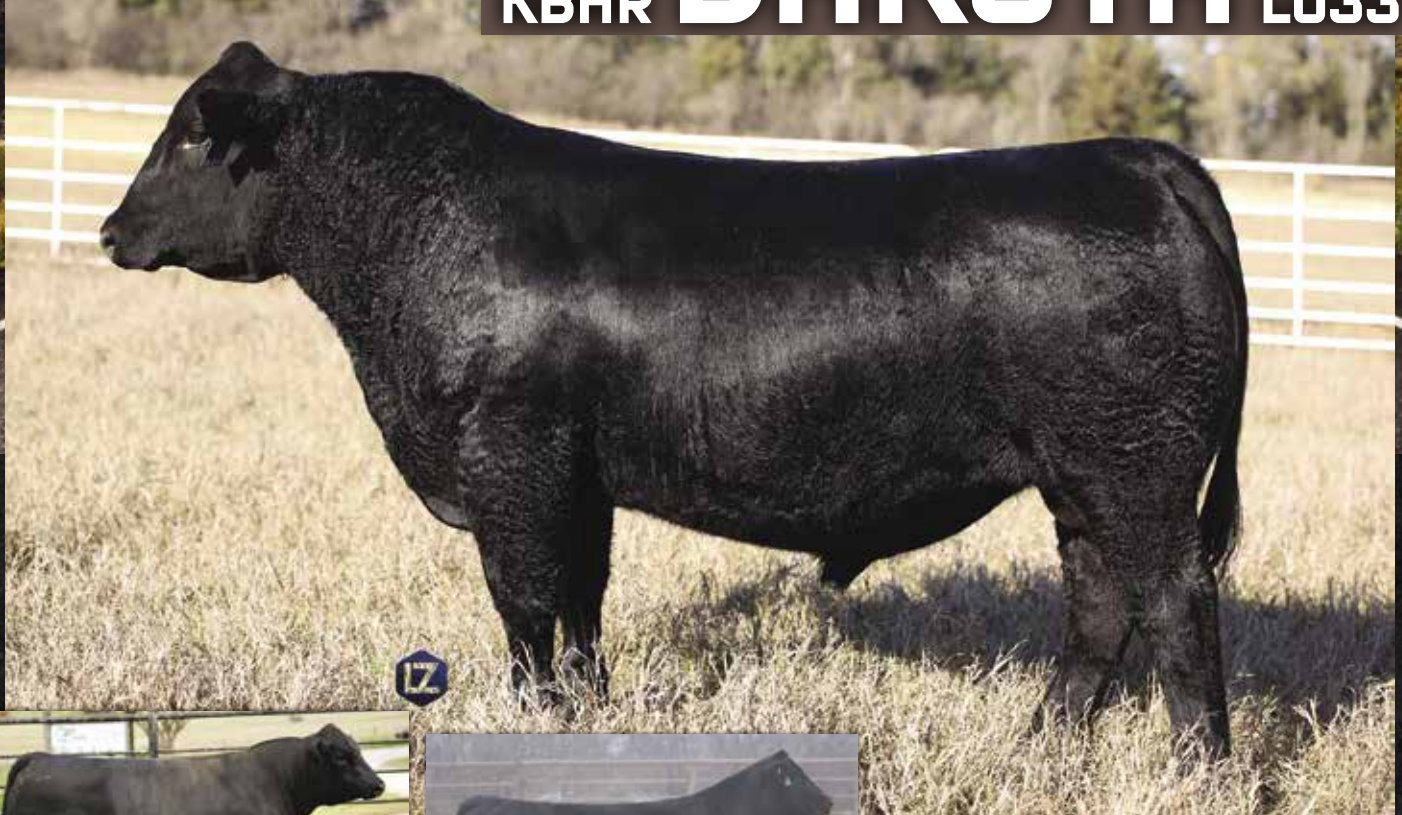
Bill Hunigan 865-712-0851

### GIBBS FARMS

Bradley Gibbs 404-904-2914  
gibbsfarms6@gmail.com



# KBHR DAKOTA L033



Gibbs 9114G Essential



WS Miss Sugar C4

Purebred Simmental | ASA# 4225709  
DOB. 3/16/23 | Homozygous Polled  
Homozygous Black

Sire. GIBBS 9114G ESSENTIAL  
Dam. WS MISS SUGAR C4

	CE	BW	WW	YW	MCE	MILK	MWW	STAY	Marb	BF	REA	API	TI
EPD	17.8	-3.6	92.3	150.4	9.9	30.2	76.3	19.0	0.7	-0.018	0.7	192.5	108.9
Rank	3	2	15	10	5	10	5	20	3	99	80	1	1

Jeremie Ruble purchased Dakota for me. Jeremie thought we was the cock of the walk the year he sold at KBHR. He's the fanciest sugar son and the best son of his sire Essential that Jeremie has seen in all of his travels. He looks like he will pretty cattle up, add frame plus length. He may be the best Sugar son ever. Too bad he was a little late to the party. I like to think he was fashionably late. Look for his first set of sons to sell in Waverly, AL the first Saturday in December 2026. We will be crossing them with KBHR Homelander & RVR Tyson daughters. It will be a magical cross! Make sure to get your semen for late spring breeding and to be ready for next fall while it is in stock.

## 59 KBHR DAKOTA L033

Selling 10 units of conventional semen. Semen available sale day or stored at Cato Farm or Custom Genetic Solutions in Mitchell, SD.

## Keller Broken Heart Ranch

Dwight, Susan, Luke, Jake & Tess Keller  
1573 55th Street, Mandan, ND 58554  
kbhrrsimmental.com

## Cato Farm

Philip Cato, 678-687-5421  
2740 Lee Road 86, Waverly, AL 36879  
jpcato10@gmail.com



**PACK A PUNCH** TO YOUR NEXT CALF CROP

# RVR TYSON 429K



ASA#. 4219089 | 1/2 SM 1/2 AN  
HOMO BLACK | HOMO POLLED  
BD. 8/25/22 | TATTOO. 429K  
SIRE. ROSEDA POWERBALL23 F091  
DAM. RC MISS KANSA 486G

CE	BW	WW	YW	MCE	Milk	MWW	Stay	Marb	BF	REA	API	TI
16.2	-1.1	109.6	177.1	10.0	23.2	77.5	16.4	1.09	0.045	0.45	195.4	119.1
15%	35%	1%	1%	10%	55%	3%	35%	2%	99%	85%	1%	1%

LONESOME PINES FARM & RIVER CREEK FARMS

**60**

## RVR TYSON 429K

*Selling 10 units of conventional semen. Available to pick up sale day.*

Tyson was the high selling bull for River Creek in 2024 when Jeremie Ruble purchase him for Terry Bowen in Alabama—and it's easy to see why. With a 6+ frame score, he's exactly what today's commercial cattlemen are after: big, long, and built to add pounds. His spread is almost unreal—starting with a negative birth weight and rocketing to top 1% weaning and yearling growth. Add in mind boggling marbling and the distinction of being the 11th highest \$TI SimAngus bull in

the entire database, and you've got a complete outcross that brings something truly unique to the table. TYSON checks every box and then some. His sisters have floated to the top of our program too and we have flushed them heavily. All the work is done with this one. He will spend the fall in Prattville, AL and he will continue to breed cows in Manhattan, KS. We expect big things from him and both Lonesome Pine Farm & River Creek are using him heavily. Look for his sons to surface to the top at the Southern Superior Sale held each December at Cato Farms in Waverly, AL just a short drive outside of Auburn. We encourage you to come take a look at him and his progeny because both are impressive!

### RIVER CREEK FARMS

Joe & Abram Mertz | Abram. 785-456-3986  
Manhattan, Kansas | [rivercreekfarms.com](http://rivercreekfarms.com)

**RUBLE CATTLE SERVICES** Marketing Partner | Jeremie Ruble. 406-581-7940

### LONESOME PINE FARM

Terry & Marion Bowen | Terry. 334-235-1275  
Crenshaw County, Alabama





**LOT 61**



**LOT 62**

## 61 KBHR HOMELANDER J071

RIVER CREEK FARMS

BD: 3/19/21 / ASA#: 3943783 / Tattoo: J071 / 1/2 SM 1/2 AN  
Semen / Homozygous Polled / Homozygous Black

G A R ASHLAND  
G A R HOME TOWN  
CHAIR ROCK SURE FIRE 6095



KBHR HIGH ROAD E283  
KBHR MEDORA G132  
BAR CK MS X38 106Z

CE	BW	WW	YW	MCE	Milk	MWW	Stay	Marb	BF	REA	API	TI
17.1	-1.2	105.7	169.1	9.6	23.7	78.0	15.7	1.49	-0.021	1.20	214.9	127.2

*Selling 10 units of conventional semen. Semen stored at KABSU - Manhattan, KS or CGS - Mitchell, SD.* Here is a bull Jeremie Ruble helped us identify and purchase from Keller Broken Heart Ranch in ND. No bull has done more to separate himself from the pack recently than HOMELANDER. His first sons to sell at public auction were nothing short of dominant, topping five major sales with standout results: \$200,000 for MONACO in which we purchased a \$55,000, \$38,000 son at Gibbs Farms Sale, \$30,000 for LANDMARK and \$26,000 for LANDMAN also consigned to this sale. In the 2025 River Creek Farms Spring Bull Sale alone, 53 sons averaged an impressive \$13,235. And his daughters may be even more valuable. They're some of the easiest-to-mate females in the SimAngus breed—balanced, broody, and easy to pick out in our large replacement pens. They offer the genetic flexibility and maternal strength to take your program to the next level. Homelander is not just a sire—he's a game changer. This semen is flying out off the shelves. If you plan to use him in 2025 or 2026 you better get some in your tank!

## 62 BLPF LANDMAN L21

RIVER CREEK FARMS

BD: 9/4/23 / ASA#: 4356774 / Tattoo: L21 / 5/8 SM 3/8 AN  
Semen / Homozygous Polled / Homozygous Black

G A R HOME TOWN  
KBHR HOMELANDER J071  
KBHR MEDORA G132



TJ STONE COLD 336G  
BLPF MISS AMELIA J27  
BLPF MISS DORIS B15

CE	BW	WW	YW	MCE	Milk	MWW	Stay	Marb	BF	REA	API	TI
16.0	-2.2	89.2	143.0	9.3	25.6	70.8	19.0	1.06	-0.013	0.69	193.8	108.9

*Selling 10 units of conventional semen. Semen stored at KABSU - Manhattan, KS or CGS - Mitchell, SD.* Like his sire, KBHR Homelander J071, LANDMAN combines elite performance with eye-catching appeal. As a baldy, he stands out with a rare blend of pedigree, phenotype, and genetic merit. With his impressive growth, marbling, and a -2 lb BW EPD, finding another white-faced SimAngus bull of his caliber is no easy feat. LANDMAN is a front-pasture kind of bull, ready to make an impact in an astute breeder's program. Alabama's own pride and joy and southern gentlemen Terry Bowen raised him. Landman is a beautiful bull both he and his progeny are the kind you'll love to sit in the shade and sip ice tea on a hot summer day. He slicks off right away so he can handle the heat and humidity or fescue country for that matter.



## 63 RUBYS QUADRANT 210K

BD: 1/1/22 / ASA#: 4135953 / Tattoo: 210K / PB SM  
Semen / Homozygous Polled / Homozygous Black

WS PROCLAMATION E202  
LBRS GENESIS G69  
LBR DIANA D69



WS ALL-AROUND Z35  
RUBYS LINDA 721E  
RUBYS LINDA 341A



**LOT 63**

CE	BW	WW	YW	MCE	Milk	MWW	Stay	Marb	BF	REA	API	TI
16.1	0.6	109.3	168.4	8.2	27.5	82.0	16.3	0.53	-0.040	1.25	174.6	109.8

*Selling 10 units of conventional semen. Semen stored at KABSU - Manhattan, KS or CGS - Mitchell, SD.* Jeremie had me stop by and look at this bull after I attended the Schooley Cattle Co. Sale and he was right, and I fell in love and couldn't keep my hand down! Our \$80,000 high seller from the 2023 Ruby Cattle Co. Bull Sale, QUADRANT is already making waves across the industry. We've shipped semen to Australia and he's been used to flush both elite show cows and seedstock donor females in some of the nation's top herds. This is a bull clearly on his way to the top of the breed registry. Catch him now before it's too late. Genomically, QUADRANT checks every box for today's most discerning commercial producers and is an ACE-certified calving ease son of LBRS Genesis. Phenotypically, he brings unmatched power and presence—wide based, heavy muscled, and standing on massive, perfectly designed feet. If you are driving through Kansas; this is a bull you need to stop and see him and look through both our heifer development lot and our bulls that will be on our next two sales. The proof is in the pudding, and they are damn good!

## 64 ADV COMPASS L3574

BD: 3/11/23 / ASA#: 4212198 / Tattoo: L3574 / PB SM  
Semen / Homozygous Polled / Homozygous Black

BRIDLE BIT ECLIPSE E744  
HOOK'S GALILEO 210G  
HOOK'S EVITA 18E



LBRS GENESIS G69  
ADV MS GENESIS J1017  
ADV MS WIDE RANGE F8032



**LOT 64**

CE	BW	WW	YW	MCE	Milk	MWW	Stay	Marb	BF	REA	API	TI
14.8	-0.7	106.5	170.0	9.5	28.3	81.5	17.7	1.04	-0.037	0.67	205.0	121.7

*Selling 10 units of conventional semen. Semen stored at KABSU - Manhattan, KS or CGS - Mitchell, SD.* ADV COMPASS L3574 is one of the most unique purebred Simmental bulls the breed has seen to date. He was our \$70,000 high-selling selection at the Waggonhammer Ranch 2024 Bull Sale. We sent Jeremie on an early scouting mission and then had him at the sale as our boots on the ground. Earlier in 2024 his dam was the high selling female in Advanced Beef Genetics' dispersal sale, selling to Lucas Cattle Company. On paper, COMPASS is a true unicorn—offering the rare ability to inject growth, carcass quality, and profitability into every mating without sacrificing calving ease or maternal performance. His first calf crop is on the ground at River Creek and we couldn't be more excited. They came easy and have plenty of look at a young age. His sire HOOK'S GALILEO 210G continues to grow in popularity and Compass is his best son to date. If you want to make elite purebreds or use the best Simmental genetics on other breeds of cows to make hybrids this is the logical choice. We've only started selling semen so buy some today and you can market some of his first sons and daughters!

## 65 KBHR REVOLUTION H071

BD: 3/21/20 / ASA#: 3789458 / Tattoo: H071 / PB SM  
Semen / Homozygous Polled / Homozygous Black

HHS MR ENTOURAGE 867B  
HHS MR 847D  
HHS MISS LUCKY AVA 847A



CLRS GRADE-A 875 A  
WS MISS SUGAR C4  
WS ANISE A71



**LOT 65**

CE	BW	WW	YW	MCE	Milk	MWW	Stay	Marb	BF	REA	API	TI
13.4	1.2	105.6	162.8	6.2	15.5	68.2	19.2	0.51	-0.050	1.10	172.7	104.5

*Selling 10 units of conventional semen. Semen available sale day or stored at KABSU - Manhattan, KS or CGS - Mitchell, SD.* REVOLUTION was our \$75,000 high selling selection in the 2021 Keller Broken Heart Ranch Bull Sale. Jeremie Ruble formed a partnership with us and Schooley Cattle Co. with Phil's most famous nephews who we met in person after Jeremie had picked out and purchased Haggard. As you can see by his mature photo, he continues to showcase an awe-inspiring phenotype and a beautiful blaze face. Coupled with elite growth and carcass genetics that are now proven, we believe REVOLUTION has the potential to be a transcendent Simmental herd sire. His first daughters are in production, possess beautiful udders and are already showing up in the bottom side of some impressive young herd sires at River Creek (MONACO and MAINSTAY). We couldn't be more excited about the impact this sire is having on the next generation of River Creek genetics. His true untapped potential is getting heavily used on Angus and low % Simmental cows to make higher percentage SimAngus baldies. This is the best baldy son of the now deceased Sugar cow. If you want proven and marketable baldy Sim Genetics he is a must use bull.



RIVER CREEK FARMS

## 66 W/C HEADSHOT 957M

BD: 2/6/24 / ASA#: 4442183 / Tattoo: 957M / PB SM  
Semen / Homozygous Polled / Homozygous Black

CLRS GUARDIAN 317G  
TSN STATESMAN K006  
TSN MISS EAGLE H345

X

MR SR 71 RIGHT NOW E1538  
W/C MISS WERNING 978G  
W/C MISS WERNING 704E

CE	BW	WW	YW	MCE	Milk	MWW	Stay	Marb	BF	REA	API	TI
15.0	-1.6	102.9	153.0	7.7	21.2	72.5	17.9	0.25	-0.094	1.05	161.4	100.8

*Selling 10 units of conventional semen. Semen stored at KABSU - Manhattan, KS or CGS - Mitchell, SD.* HEADSHOT is one of those rare bulls that makes you question what's possible—his combination of look and numbers just doesn't seem real. Abram & Jeremie put their heads together to pick out the perfect combination bull. Featured as Lot 69 in the 2025 Werning Sale and sired by STATESMAN one of the most sought-after bulls in the business, whose limited semen is commanding over \$400 per unit! HEADSHOT steps in as the logical heir to the throne. He brings even more style, performance, to the table—making him not just a next-generation option, but the one you've been waiting for. He's a yearling bull so the demand is high, and the supply is low. Get some while you can!



LOT 66

RIVER CREEK FARMS

## 67 TJ TAKE THAT 614M

BD: 1/5/24 / ASA#: 4366420 / Tattoo: 614M / PB SM  
Semen / Homozygous Polled / Homozygous Black

WS PROCLAMATION E202  
KBHR BOLD RULER H152  
BAR CK MS X38 106Z

X

CAMP CAMPBELL E737  
TJ 60H  
TJ 5F

CE	BW	WW	YW	MCE	Milk	MWW	Stay	Marb	BF	REA	API	TI
16.2	-0.3	89.0	154.2	8.5	16.2	60.5	20.2	0.67	-0.048	0.48	185.7	101.2

*Selling 10 units of conventional semen. Semen stored at KABSU - Manhattan, KS or CGS - Mitchell, SD.* We're excited to partner with Powerline Genetics on the acquisition of TJ TAKE THAT 614M, the standout high seller from the 2025 TJ Ranch sale (Lot 26). Jeremie picked had this bull picked out for us and when Deryl Riley expressed interest in the bull he helped us form a partnership. This bold, blaze-faced son of Bold Ruler brings a striking look—big ribbed, long sided, and athletic on the move—with the added punch of being a true phenotype upgrade over his sire. Backed by the influential 106Z cow family and tying into River Creek greats like HOMELANDER and MONACO, he combines elite growth with carcass quality in a package we believe will make a powerful impact in our program and those that are wise enough to include him in their breeding programs. KBHR BOLD RULER H152 sired calves have been received well across the country. This blaze face son brings the predictability of his pedigree and great looks to a whole different level! He is also super fertile as he made 290 units of flush quality semen on his first jump just days after the sale. He is a must use baldy purebred bull who has strong ties to the best Simmental programs in the country.



LOT 67

RIVER CREEK FARMS

## 68 TJ NORTH 528L

BD: 2/4/23 / ASA#: 4217486 / Tattoo: 528L / 1/2 SM 1/2 AN  
Semen / Homozygous Polled / Homozygous Black

S A V RAINFALL 6846  
SQUARE B TRUE NORTH 8052  
ELBANNA OF CONANGA 1209

X

CCR COWBOY CUT 5048Z  
TJ 28E  
TJ MS 38W

CE	BW	WW	YW	MCE	Milk	MWW	Stay	Marb	BF	REA	API	TI
22.0	-4.4	73.7	113.0	11.9	29.6	66.1	16.9	0.67	0.013	0.12	171.3	92.0

*Selling 10 units of conventional semen. Semen stored at KABSU - Manhattan, KS or CGS - Mitchell, SD.* NORTH was our favorite SimAngus bull to sell in 2024. Jeremie called us and told us he found a bull that had tremendous quality and unbelievable calving ease. He's a bull that epitomizes the perfect blend of smooth skeletal structure, commanding presence, and remarkable style SimAngus bulls command. With top 1% calving ease, he offers rare heifer-safe calving, growth, and marbling. We're using him heavily on our heifers, and Triangle J Ranch is too, proving his industry appeal. Expect NORTH to sire high-quality, marketable offspring that excel and command top dollar. Volume discounts available for large heifer projects. Call for Ruble Cattle Services or River Creek Farms for special pricing.



LOT 68




**LOT 69**

## 69 **SCHOOLEY HAGGARD A411H**

BD: 2/26/20 / ASA#: 3752744 / Tattoo: A411H / 1/2 SM 1/2 AN  
Semen / Homozygous Polled / Homozygous Black

G A R SURE FIRE  
EGL FIRESTEEL 103F  
TJ 22X



G A R PROPHET  
SCHOOLEY MISS 3000A 823F  
CCR MS SINGLETARY 3000A

CE	BW	WW	YW	MCE	Milk	MWW	Stay	Marb	BF	REA	API	TI
18.5	-2.2	86.4	132.4	8.6	24.6	67.8	17.6	1.36	-0.001	0.50	207.5	113.7

*Selling 10 units of conventional semen. Semen stored at KABSU - Manhattan, KS or CGS - Mitchell, SD.* HAGGARD was our \$32,500 high selling selection in the 2021 Schooley Cattle Company Bull Sale. Jeremie helped identify this bull for us and introduced us to Roman Schooley and the rest of his crew. Three years later, we feel like that was a steal. Why? There is no better combination of phenotype and marbling in the breed. Look no further than his sons in this year's sale. Currently, HAGGARD ranks as the #8 Active SimAngus bull in the Simmental database for the \$TI EPD. Amongst active sires, he is also the 10th highest Marbling EPD. Not to mention, he's a heifer bull with well above average growth. Because Haggard has worked so well for us we encouraged one of our MO cooperators to purchase his dam. His sisters will join his daughters in producing great bulls for River Creek Farms and his brothers will be feature lots for the next several years. We believe whole heartily in Haggard and his dam 823F. Volume discounts available for large heifer projects. Call for Ruble Cattle Services or River Creek Farms for pricing.


**LOT 70**

## 70 **RVR JORDAN23 478L**

BD: 9/11/23 / ASA#: 4374857 / Tattoo: 478L / 1/2 SM 1/2 AN  
Semen / Homozygous Polled / Homozygous Black

E W A PEYTON 642  
ROSEDA POWERBALL23 F091  
ROSEDA BLACKCAP B103 D118



WS ALL-AROUND Z35  
RC MISS ALL-AROUND 031C  
RC MISS TOP GRADE 040A

CE	BW	WW	YW	MCE	Milk	MWW	Stay	Marb	BF	REA	API	TI
14.3	-0.1	110.1	173.4	8.0	23.1	78.1	15.7	0.88	0.024	0.81	177.9	112.8

*Selling 10 units of conventional semen. Semen stored at KABSU - Manhattan, KS or CGS - Mitchell, SD.* JORDAN23 was our 2025 High Seller at \$62,000 going to Kearns Cattle, Eichacker Simmentals and Crossroads Cattle Co. Thank you to Ruble Cattle Services & Jered Shipmen for putting this partnership together. When his video dropped ahead of our sale, the buzz was immediate—and for good reason. It's rare to find a bull with his kind of presence, performance, and carcass merit all in one package. Jordan23 sits at the perfect intersection of seedstock appeal and real-world commercial value. Just look at the numbers: he and his Roseda Powerball23 brothers have averaged \$19,000 on 20 sons across our last two sales. That's not just impressive—it's proof these bulls consistently check every box commercial buyers are after. Jordan23 is the kind of bull that will help you build your next generation of high sellers. You will see his influence at our sale, in Innovation Ag sales, at AGR Sales and Eberspacher Enterprises sales for sure. If you need an outcross that will be well excepted the bull and the politics are right on this one!


**LOT 71**

## 71 **BAS NEW HEIGHTS M4042**

BD: 3/17/24 / ASA#: 4426391 / Tattoo: M4042 / 3/4 SM 1/4 AN  
Semen / Homozygous Polled / Homozygous Black

HOOK'S EAGLE 6E  
BAS MONEY MAKER J801  
BAS MISS BEACON F801



CLRS FREE TRADE 210F  
BAS MISS FREE TRADE H042  
MILL BRAE CP BARBARA 8066

CE	BW	WW	YW	MCE	Milk	MWW	Stay	Marb	BF	REA	API	TI
19.4	-4.3	108.1	181.9	9.8	35.5	89.4	23.2	0.52	-0.037	1.29	191.2	112.2

*Selling 10 units of conventional semen. Semen stored at KABSU - Manhattan, KS or CGS - Mitchell, SD.* We held publication of this directory in anticipation of acquiring NEW HEIGHTS in the 2025 Iowa Beef Connection Sale. Why? Because he's the most unique blaze-faced heifer bull in the business—pairing an absolutely jaw-dropping BW-to-WW spread with standout phenotype. He's square footed, stout from the ground up, and wide-based with added power, yet still smooth-shouldered and long-sided. Jeremie Ruble helped us team up with Gonsior Simmentals to purchase him out competing numerous partnerships from around the country and from Alabama too. This is the bull everyone wanted but tried to keep secret. Well, the secret is out and we can't be happier to make him a big part of our program. This is the kind of bull you can breed every heifer and cow to make an instant upgrade and high-quality baldies. This is as fresh of genetics as you will find. His sire is in high demand and the semen is back ordered. Here is a son of higher quality. All you have to do is purchase the semen and get it in your herd. Feel free to call any of the partners on this bull. He is a true game changer!



RIVER CREEK FARMS

## 72 RVR PROMISELAND 461L

BD: 9/4/23 / ASA#: 4375613 / Tattoo: 461L / 1/2 SM 1/2 AN  
Semen / Homozygous Polled / Homozygous Black

G A R HOME TOWN  
KBHR HOMELANDER J071  
KBHR MEDORA G132



RC XCEED 063D  
RC MISS XCEED 449J  
RC MISS ASHLAND 449G

CE	BW	WW	YW	MCE	Milk	MWW	Stay	Marb	BF	REA	API	TI
16.2	-2.7	87.3	150.8	9.5	27.0	71.8	17.8	1.54	0.004	0.65	219.8	120.8

*Selling 10 units of conventional semen. Semen stored at KABSU - Manhattan, KS or CGS - Mitchell, SD.* Among all parent and non-parent SimAngus bulls in the IGS database, PROMISELAND's 1.54 Marbling EPD ranks #3. PROMISE LAND is a wellbalanced, deep-bodied bull with added frame. He's a true breed-leading bull with a genetically stacked pedigree that will move the needle forward in a positive direction. If you're serious about producing cattle with exceptional end-product value and multi-generational maternal excellence from both Angus and Simmental sires, this bull is the clear choice. We plan on using him to make outstanding SimAngus and to capture his rare ERTs by breeding him to make 3/4 and a new line of high value purebred Simmentals.


**LOT 72**

RIVER CREEK FARMS

## 73 TERS KODIAK 206K

BD: 1/20/22 / ASA#: 4042365 / Tattoo: TERS 206K / PB SM  
Semen / Homozygous Polled / Homozygous Black

GIBBS 7382E BROAD RANGE  
GIBBS 9114G ESSENTIAL  
GIBBS 7153E STAR 3136A



MCM TOP GRADE 018X  
TECS EXTREME 709E  
HOOK'S XCELLENCE 87X

CE	BW	WW	YW	MCE	Milk	MWW	Stay	Marb	BF	REA	API	TI
17.4	-1.9	73.9	113.9	10.0	34.4	71.2	22.0	0.50	-0.031	0.60	175.2	90.8

*Selling 10 units of conventional semen. Semen available sale day or stored at KABSU - Manhattan, KS or CGS - Mitchell, SD.* KODIAK was the \$110,000 high-selling bull in the 2023 Bred For Balance Sale, and we're proud to have partnered with Schooley Cattle who personally picked him out and brought him to our attention at River Creek. He's the most striking and well-balanced purebred bull we've ever owned. His dam pairs the breed's leading female-producing sire, MCM TOP GRADE 018X, with the most influential cow family to come out of the legendary Hooks Farms program—HOOK'S XCELLENCE 87X. His first daughters hit the mark, topping Schooley's sale this year and proving what we already believed: this bull is built to make elite females. We especially liked the one that was the co-high selling open heifer that was selected by our good friend and astute cattlemen and southern gentleman Michael Hayman Jr. He will be at the sale to answer questions about how good the Kodiak calves are.


**LOT 73**

NEAL BROS

## 74 BAS MAKIN MONEY M4141

BD: 3/22/24 / ASA#: 4426477 / Tattoo: M4141 / 3/4 SM 1/4 AN  
Semen / Homozygous Polled / Homozygous Black

HOOK'S EAGLE 6E  
BAS MONEY MAKER J801  
BAS MISS BEACON F801



CCR COWBOY CUT 5048Z  
TJ 141C  
TJ MISS NET WORTH W9

CE	BW	WW	YW	MCE	Milk	MWW	Stay	Marb	BF	REA	API	TI
11.5	2.4	125.9	200.9	6.0	28.1	90.8	11.3	0.48	-0.053	1.36	148.3	111.6

*Selling 10 units of conventional semen. Semen available sale day or stored at Nichols Cryo Genetics, RCS tank at the sale or Neal Bros farm.* We once again called Jeremie about this bull sale about other bulls and he said to buy Lot X. Somehow AGR had left one of the best bulls and a true genetic gem completely out of the sale catalog. We did our research and agreed we had to have him. BAS Makin Money M4141 was bought right. The supplement sheet even showed his old EPDs but his current EPDs have this exceptional baldy bull at top 1% WW posting a 125.9 and a top 1% YW at an unbelievable 201! He is still a double-digit CE bull with top 40% MARB and top 1% REA. He is top 30% API and top 1% TI. The narrative has been pushed to make small cattle who are high API have a crazy amount of calving ease but also have no performance. This bull will make them bigger, stouter and pack a punch without causing calving difficulties or sacrificing any end product value. Furthermore, he has maternal greats in his pedigree such as Hook's Eagle and Hook's Beacon and even better he is out of a cow direct from the heart of the herd of Triangle J sired by one of the best to ever do it CCR Cowboy Cut 5048Z. He is going to pair extremely well with our other herd sire Ruby Head Start 3L105. If you want to sell baldies that pack on the pounds plus do everything else, you need him. He is made for the south where everyone is complaining about calves coming too light at birth and not growing good. Get your semen today. You will be among the first to get it!


**LOT 74**




**LOT 75**

## 75 RUBYS START UP 3L105

BD: 9/25/23 / ASA#: 4370993 / Tattoo: 3L105 / PB SM  
Semen / Homozygous Polled / Homozygous Black

SFG COWBOY LOGIC D627  
SFG HEAD START H0509  
SFG JERRI E97



WS ALL-AROUND Z35  
RUBYS LINDA 721E  
RUBYS LINDA 341A

CE	BW	WW	YW	MCE	Milk	MWW	Stay	Marb	BF	REA	API	TI
23.3	-1.1	89.7	135.9	13.8	27.3	72.1	15.2	0.52	-0.077	1.09	176.2	100.5

*Selling 10 units of conventional semen. Semen available sale day or stored at Nichols Cryo Genetics, RCS tank at sale or Neal Bros farm. We called Jeremie about the Ruby Sale and asked about a bull way down the line. He told me he thought he could get us a deal on the Lot 1 feature bull and by gosh he did. 3L105 is out of the Linda 721E donor who is the dam of Quadrant who headlines the purebred bulls at River Creek Farms. This bull offers a purebred calving ease option with NO Beacon and NO Sugar C4. He was the best made highest quality bull at Ruby's 2025 that had both breeder and commercial appeal. He is a top 1% for both CE & MCE. He boasts a top 15% BW in combination with top 20% WW & YW with top 10% MARB and top 15% REA. These ERT's make him a top 4% API and a top 5% TI. He will be a magical cross with our other new herd bull BAS Makin Money M4141. This is a bull everyone should be using on their heifers to make them good and to give yourself some mating flexibility.*

NEAL BROS


**LOT 76**

## 76 KBHR DIFFERENT DEAL K150

BD: 3/23/22 / ASA#: 4104268 / Tattoo: K150 / PB SM  
Semen / Homozygous Polled / Homozygous Black

HHS MR 847D  
KBHR REVOLUTION H071  
WS MISS SUGAR C4



WS PROCLAMATION E202  
KBHR DEBUTANTE H113  
BAR CK MS X38 106Z

CE	BW	WW	YW	MCE	Milk	MWW	Stay	Marb	BF	REA	API	TI
14.0	-1.8	89.8	140.0	8.2	18.8	63.6	21.0	0.92	-0.029	0.67	198.4	108.7

*Selling 10 units of conventional semen. Semen available sale day or stored at 605 Sires, Nichols Cryo-Genetics or in RCS Tank on Sale Day. KBHR DIFFERENT DEAL K150 may be the best-balanced blaze face purebred son of both KBHR REVOLUTION H071 and KBHR DEBUTANTE H113 who is a daughter of WS PROCLAMATION E202 & BAR CK MS X38 106Z. He is proven to be a heifer bull and his first calves were well received in our annual production sale. Different Deal will make them good, blaze faced and great numbered. There is only upside using him. Ask consigner Rex Dunn about how much he likes Different Deal.*

JARED WERNING CATTLE


**LOT 77**

## 77 RFS HERALD H104

BD: 3/12/20 / ASA#: 3782066 / Tattoo: H104 / PB SM  
Semen / Homozygous Polled / Heterozygous Black

CDI MAINLINE 265D  
LCDR IMPACT 134F  
WS MISS SUGAR C4



REMINGTON LOCK N LOAD54U  
BCLR MISS BALDY E704  
WS MOTHER LOD E21

CE	BW	WW	YW	MCE	Milk	MWW	Stay	Marb	BF	REA	API	TI
10.7	3.0	95.8	147.6	4.0	22.8	70.6	16.7	0.22	-0.097	1.05	142.0	90.3

*Selling 10 units of conventional semen. Semen available sale day or stored at 605 Sires, Nichols Cryo-Genetics or in RCS Tank on Sale Day. RFS HERALD H104 is a Hetero Black & Homo Polled son of LCDR IMPACT 134F & BCLR MISS BALDY E704. He is the higher marbling brother. This semen has been limited and in high demand.*

JARED WERNING CATTLE



JARED WERNING CATTLE

## 78 RFS HEAVY HITTER H45

BD: 3/3/20 / ASA#: 3782005 / Tattoo: H45 / PB SM  
Semen / Homozygous Polled / Homozygous Black

CDI MAINLINE 265D  
LCDR IMPACT 134F  
WS MISS SUGAR C4



REMINGTON LOCK N LOAD54U  
BCLR MISS BALDY E704  
WS MOTHER LODE W21

CE	BW	WW	YW	MCE	Milk	MWW	Stay	Marb	BF	REA	API	TI
9.8	3.8	115.5	180.1	4.2	21.2	78.8	15.3	-0.05	-0.124	1.53	131.2	95.2

*Selling 10 units of conventional semen. Semen available sale day or stored at 605 Sires, Nichols Cryo-Genetics or in RCS Tank on Sale Day.* RFS HEAVY HITTER H45 IS the Homo Polled & Homo Black son of LCDR IMPACT 134F & BCLR MISS BALDY E704. He is the higher growth brother who boasts top 1% WW posting a 115 WW and top 1% YW posting a 179.4 YW. River Creek purchased his most complete daughter to date and she is being successfully flushed at 605 Sires & Donors. We encourage you to come see her and her TSN Statesman K006 son and take a look at all the other stud bulls we have there while they are in one place being collected.



**LOT 78**

JARED WERNING CATTLE

## 79 ZTGC JUST CUZ 52K

BD: 3/4/22 / ASA#: 4063644 / Tattoo: 52K / PB SM  
Semen / Homozygous Polled / Homozygous Black

CCR ANCHOR 9071B  
W/C NIGHT WATCH 84E  
MISS WERNING KP 8543U



GEFF COUNTY O  
ZTGC THE BLAZE  
MS KATINKA 1837Y

CE	BW	WW	YW	MCE	Milk	MWW	Stay	Marb	BF	REA	API	TI
9.6	2.4	91.5	136.3	4.2	20.8	66.1	13.5	0.42	-0.065	0.93	143.4	92.5

*Selling 10 units of conventional semen. Semen available sale day or stored at 605 Sires, Nichols Cryo-Genetics or in RCS Tank on Sale Day.* ZTGC JUST CUZ 52K is the best son of W/C NIGHT WATCH 84E and is out of a GEFF COUNTY O, MR NLC UPGRADE U8676 & C STOCKMAN 365 dam. His calves come easy and they are fancy. We think he is a show heifer maker delux.



**LOT 79**

R & K CATTLE CO.

## 80 RYALS GRADE UP

BD: 9/15/13 / ASA#: 2878064 / Tattoo: A906 / 1/2 SM 1/2 AN  
Semen / Homozygous Polled / Homozygous Black

ELLINGSON LEGACY M229  
MR NLC UPGRADE U8676  
MS NLC MOJO S6119 B



SCHURRTOP MC 2500  
LIMESTONE ROYAL LASS S600  
BR ROYAL LASS 7036-19

CE	BW	WW	YW	MCE	Milk	MWW	Stay	Marb	BF	REA	API	TI
11.2	2.1	82.7	132.1	6.2	20.8	62.5	11.4	0.42	-0.042	0.73	127.3	83.2

*Selling 10 units of conventional semen. Semen stored at 605 Sires, Nichols Cryo-Genetics or in RCS Tank on Sale Day.* First time this semen has ever been offered to the public. This bull produces sons that just flat grow. several of his sons have won the Alabama bull test in Culmen and has won Tennessee Gaining over 6 pounds a day. His calves will be the high weaning calves come weaning time with out a doubt. Don't miss this opportunity to ad the right genetics to your heard.



**MR NLC UPGRADE U8676 - SIRE OF LOT 80**



**Hammond Equipment**  
**Faunsdale, AL 36738**  
**Since 1973**  
**334-627-3348**

**We specialize in VERMEER Hay Equipment:**  
**Round Balers, Mowers, Rakes, Tedders,**  
**Wrappers and Hay Accessories.**

**We are the largest baler belting dealer in the U.S.**  
**We take pride in selling only American made belting.**

**Call us for all your Vermeer and Bush Hog equipment**  
**and parts needs.**

**Terry and Meredith Hammond, Owners**



**ALL BULLS MARKETED THROUGH**  
**NEXT STEP CATTLE CO.**

**Join us for our upcoming sale**  
**November 2025**

*Contact us today for more information.*  
*James Dixon 334-456-1209*



**Your local expert**  
**in cattle loans**

Alabama Farm Credit understands the unique aspects of agricultural and estate operational financing. We meet the financial needs of our members by first getting to know them and the nuances of each rural-based operation.



**Scan to calculate your loan**

At AFC, you'll get a competitive rate up front, but also as a member you will receive a dividend check every year.

This check is cash back in your pocket. You can choose to invest in your business, your family, or put back to your loan to effectively lower your interest rate.

**Cullman office:**  
**(256) 734-0132**

**Together we grow.**  
**ALABAMAFARMCREDIT.COM**





Local decision making.  
Personal attention. Unexpected hospitality.  
It's all part of the River Bank & Trust *difference*.

*We invite you to experience it for yourself.*



RIVERBANKANDTRUST.COM | 334.290.1012

To see more follow us on    and 

**At Premier Select Sires  
we promise to provide...**

**QUALITY SERVICE.**

**ACCESS TO MARKETING.**

**HIGHER REPRODUCTIVE EFFICIENCY.**

**ELITE SIRES.**

**Your business demands more...  
WE DELIVER MORE.**



(800) 227-6417 • [www.premierselectsires.com](http://www.premierselectsires.com) •    

Contact your local Premier representative to get **MORE** today!

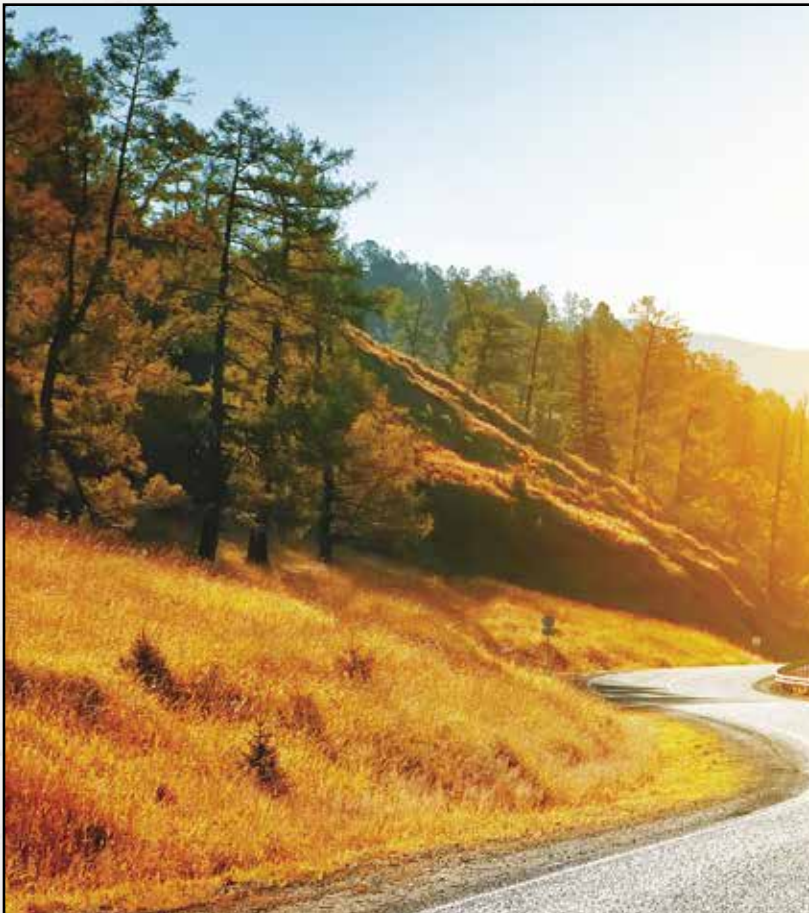
Len Holliman • Area Sales Manager • (205) 331-9479  
Jacob Johnson • Area Sales Manager • (601) 867-2555  
Jim Yance • Regional Beef Program Manager • (334) 726-7342



# Strock Insurance Agency

*The independent source for  
ALL your insurance needs!*

984 E Main St, Prattville, AL 36066  
Phone. 334-365-6555  
[strocksinsuranceagency.com](http://strocksinsuranceagency.com)



**LPC**  
**LARRY  
PUCKETT**  
CHEVROLET

2101 Cobbs Ford Road  
Prattville, Alabama 36068  
Office. 334-285-9300



# POWER IN EVERY PEDIGREE.



**SCHOOLEY KROWN 28K**

3/4 SM 1/4 AN || ASA# 4115546 || Homo Black || Homo Polled  
KBRH Revolution H071 x Schooley Miss 300A 823F  
*Semen Available*



**SCHOOLEY LIMITLESS 344L**

5/8 SM 3/8 AN || ASA# 4256883 || Homo Black || Homo Polled  
Hook's Galileo 210G x Schooley Miss 823F 068H  
*Semen Available*



**KBHR MISS AURORA K130**

PB SM || ASA# 4104248 || Homo Black || Homo Polled  
KBRH Revolution H071 x KBHR Debutante H113  
*Donor dam of Schooley/EOR Mainstay*



**CLRS KEEPSAKE 251K**

5/8 SM 3/8 AN || ASA# 4032110 || Homo Black || Homo Polled  
CLRS Homeland 327H x CLRS Fairy Tale 829F



**Musgrave Pride 3M**

Angus || AAA# +\*20883538  
Ellingson Prolific x Musgrave Pride 248-1825



**SATURDAY, DECEMBER 6, 2025**  
1:00 PM CST • WAVERLY, AL

**75+ SIMANGUS & SIMMENTAL BULLS & FEMALES**  
*Look for genetics at RCS Sales and bulls at the  
Southern Superior Sale the first Saturday in December.*



## English Oaks Ranch

Michael Hayman, 912-572-7408  
mhayman@englishoaksranch.com  
1343 English Oaks Blvd #80 • Statesboro, GA 30461

Jeremie Ruble, Ruble Cattle Services / Herd Consultant  
406-581-7940 / [www.rublecattleservices.com](http://www.rublecattleservices.com)



# GF

save the date

20<sup>th</sup> ANNUAL  
Fall Sale

November 8, 2025

RANBURNE, AL - 11:00 AM CST  
Selling 180 Simmental & SimAngus™ Bulls  
150 Spring Bred & Open Replacement Females

3<sup>rd</sup> ANNUAL  
Spring Sale

March 7, 2026

RANBURNE, AL - 11:00 AM CST  
Selling 60 Age-Advantaged Simmental & SimAngus™ Bulls  
60 Fall Calving Bred Females



**GIBBS BLAZER 3L02**

ASA# 4284862 || 1/2 SM 1/2 AN

CE	WW	YW	MARB	RE	SAPI	STI
12.1	97.9	160.9	0.95	1.07	181.5	108.3



**GIBBS HIGHWAYMAN 3130L**

ASA# 4284752 || 5/8 SM 3/8 AN

CE	WW	YW	MARB	RE	SAPI	STI
13.6	106.9	170.3	1.20	0.99	201.1	119.7



**GIBBS 9114G ESSENTIAL**

ASA# 3716905 || PB SM

CE	WW	YW	MARB	RE	SAPI	STI
16.2	101.4	170.4	0.48	1.50	179.2	108.0



**GIBBS KINGPIN 1140J**

ASA# 3997162 || 1/2 SM 1/2 AN

CE	WW	YW	MARB	RE	SAPI	STI
18.4	86.2	149.8	0.83	0.54	185.8	103.6



**GIBBS CULMINATION**

ASA# 4120425 || PB SM

CE	WW	YW	MARB	RE	SAPI	STI
14.1	105.4	172.2	0.98	0.89	200.1	118.4



**GIBBS PROSPERITY 3125L**

ASA# 4284283 || PB SM

CE	WW	YW	MARB	RE	SAPI	STI
15.1	87.0	135.8	0.68	0.85	183.2	101.4

**GIBBS  
FARMS**  
2118 County Road 23  
Ranburne, Alabama 36273

Doug Gibbs 404-717-2264  
Bradley Gibbs 404-904-2914  
Sam Young 770-710-4588  
facebook.com/gibbsfarmssimangus

[gibbsfarms.net](http://gibbsfarms.net)



FOCUSING ON *traits* THAT enhance  
YOUR PROFITABILITY *Since 1961*



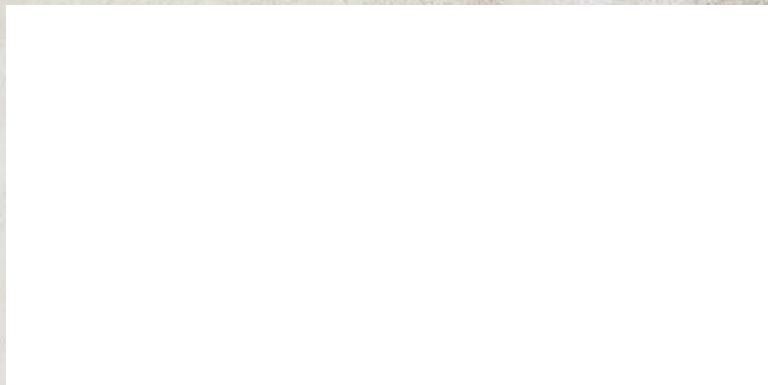
# NOTES





**RUBLE CATTLE SERVICES**

1525 140th Street  
Corydon, IA 50060



**BGIBBS 2392K HANOI CLRS0110H - LOT 54 EMBRYOS**



**GIBBS 7153E STAR 3136A - LOT 55 EMBRYOS**



**BLPF LANDMAN L21 - LOT 62 SEMEN**



**KBHR DAKOTA L033 - LOT 59 SEMEN**



**LOT 5**

# ALABAMA & MISSISSIPPI

## Simmental Sale

**SIMMENTAL • SIMANGUS • ANGUS**  
BRED FEMALES, COW-CALF PAIRS, OPEN HEIFERS,  
BULLS & FROZEN GENETICS

**SATURDAY, MAY 17, 2025**  
1:00 PM CDT • Cullman Stockyard • Cullman, AL