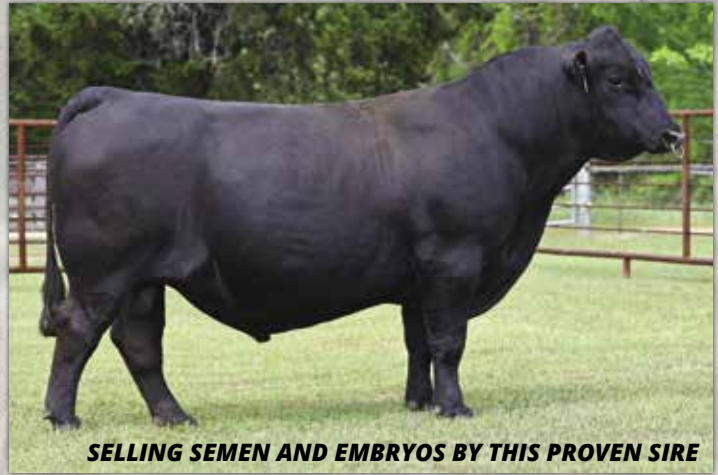




SELLING EMBRYOS BY THIS NEW \$100,000 EXCLUSIVE SIRE



SELLING SEMEN AND EMBRYOS BY THIS PROVEN SIRE



SELLING LIFETIME FALL POSSESSION



SELLING SEMEN

ALABAMA & MISSISSIPPI
Simmental Sale

SIMMENTAL • SIMANGUS • ANGUS
 BRED FEMALES, COW-CALF PAIRS, OPEN HEIFERS,
 BULLS & FROZEN GENETICS

SATURDAY, MAY 16, 2026
 12:00 PM CDT • Cullman Stockyard • Cullman, AL

INVESTED IN YOUR SUCCESS!

On behalf of Ruble Cattle Services, Alabama Simmental Association, and Mississippi Simmental Association we would like to welcome you to the 10th annual AL/MS State Simmental Sale.

We have outstanding genetic lots and live and in every stage of production. In this diverse group of females, you will find Simmental, Sim Angus, Angus, and commercial females. This sale will be featuring front end bred heifer and top quality open heifers. The selection of cow calf pairs by multiple consigners should definitely be a sale highlight too. We will also have a nice selection of service age bulls ready for immediate use. Open cows don't pay more now than ever. Even if you don't need a bull buying one or more of the bulls from the sale will be the best kind of insurance. We do have something for every type of cattle. Pay close attention to the genetic lots. We are selling semen on really top notch bulls and some of the bulls are really hard to get or this will be the first time they have been offered to the public. All the cattle & genetics in the sale will do well for their new owners. All the consigning breeders in Alabama and Mississippi put their best foot forward in a collaborative effort. A special thank you goes out to the boards of directors for AL & MS. This sale is not only a way to generate income for both state associations, but it gives an opportunity to all state members to market cattle on a national level. This event would not be possible without a lot of hard work and dedication by both associations. Please join us on sale day to help support this great group of breeders. We will work on finding economical trucking for lots purchased in the sale. You may contact any member of Ruble Cattle Services or the marketing team if you would like to talk about the cattle and leave absentee bids. We look forward to seeing you on sale day.



Jeremie Ruble & Family

- Jeremie Ruble, Ruble Cattle Services



406-581-7940 (cell)
515-850-8741
rublecattleservices@gmail.com
www.rublecattleservices.com

CONSIGNORS

Back Roads Ranch

Steve and Sam Ahrens
Sam, 715-684-9274 | Steve, 608-346-9257
kacattle2@hotmail.com
911 Good Hope Road, Leoma, TN 48468

Chambers Farm

Daniel Chambers, 770-316-7632
coach.danielchambers@gmail.com
840 County Road 49, Ranburne, AL 36273

Crossroads Cattle Co.

Rex Dunn, 931-993-5343
rhdunn57@gmail.com
238 Corders Crossroads Road
Fayetteville, TN 37334

Cypress Creek Farms

Steven P Edwards, 601-955-2670
cypresscreekfarms26@gmail.com
Pearce Edwards, 601-955-2670
spedwards44@gmail.com
2192 Highway 14, Lexington, MS 39095

David Ficken

256-508-6454
david@huntsvilletractor.com
248 Webster Road, Huntsville, AL 35811

East Fork Farms Inc.

Chad Tribble, 256-777-0647
tribblegracie3@gmail.com
Tyler Diffey, 601-720-3634
tdddww25@yahoo.com
28017 County Line Road NW
Anderson, AL 35610

Four Corner Farms

Maurlan Dickerson, 404-805-9468
maurlan.dickerson@outlook.com
559 Inlet Rd, Eufaula, AL 36027

Gibbs Farms

Sam Young, 770-710-4588
syoun022198@gmail.com
2118 County Road 23, Ranburne, AL 36273

Gingerich Family Farm

Joe and Luke Gingerich
Joe, 276-870-9563 | Luke, 276-832-1265
gfcfsimmental@gmail.com
496 Cave Creek Trail, Jonesville, VA 24263

Isbell Land & Livestock

LaTricia Isbell, 256-446-4000 or 256-366-9397
isbell.land.livestock@gmail.com
4425 Lile Lane, Leighton, AL 35646

Josh Ervin Family Farms

Josh Ervin, 740-444-3830
jcedvm@gmail.com
66002 Airport Rd, New Plymouth, OH 45654

Lonesome Pine Farm

Terry Bowen, 334-235-1275
terrybowen740@gmail.com
740 South Memorial Drive, Prattville, AL 36067

One Penny Ranch

Bill and Penny Zimmerman
C: 612-875-9509 H: 320-355-2191
onepennyranch@yahoo.com
17358 165th Ave NE, Foley, MN 56329

Reed Family Farms

John Reed, 931-580-2174
john9reed@gmail.com
Daniel Reed, 931-580-5423
johndanielreed@gmail.com
481 New Center Church Road
Shelbyville, TN 37160

River Creek Farms

Abram Mertz, 785-456-3986
abram@livestockdirect.com
1331 Poyntz Ave. Manhattan, KS 66502

TD Cattle

Tyler and Gracie Diffey
Tyler, 601-720-3634 | Gracie, 256-777-0647
tdddww25@yahoo.com
tribblegracie3@gmail.com
21241 Harris Road, Elkmont, AL 35620
109 Alva Rd., Eupora, MS 39744

Young Cattle Company

Clayton Young, 678-836-9538
claytoneyoung28@gmail.com
942 County Road 28, Ranburne, AL 36273

ALABAMA & MISSISSIPPI Simmental Sale

SIMMENTAL • SIMANGUS • ANGUS
BRED FEMALES, COW-CALF PAIRS, OPEN HEIFERS,
BULLS & FROZEN GENETICS

SATURDAY, MAY 16, 2026
12:00 PM CDT • Cullman Stockyard • Cullman, AL

SALE MANAGER

Ruble Cattle Services
Jeremie Ruble
406-581-7940 / 515-231-3831
1525 140th St. Corydon, IA 50060
rubicattleservices@gmail.com

SALE LOCATION

Cullman Stockyard
75 Co Rd 1339
Cullman, AL 35058

ACCOMMODATIONS

La Quinta Inn & Suites by Wyndham Cullman
256-775-9500
2054 St Joseph Dr NW, Cullman, AL 35058

INSPECTION OF CATTLE

Cattle may be viewed at the sale site beginning
at 12:00 PM on Friday, May 15, 2026.
Prior to Friday cattle may be viewed at their
respective farms.

HEALTH

Interstate health papers will be furnished on all
cattle selling.

TERMS & CONDITIONS

All cattle will sell under the suggested sale
terms and conditions of the American
Simmental Association.

TRUCKING

Evan Bixby / 319-559-0167
Brian Wyatt / 423-240-5533
Tyler Diffey / 601-720-3634
David Fisher / 334-352-1015
Truckers believed reliable will be available to
assist you in shipping your purchases.

INSURANCE

Jamie Secondino, American Livestock Insurance
812-208-0956

SALE WEEKEND SCHEDULE

Friday, May 15, 2026

12:00 pm - Dusk Viewing of Sale Cattle
6:00 pm Social at the Branding Iron Steak House

Saturday, May 16, 2026

9:00 am Viewing of Sale Cattle
12:00 pm Alabama & Mississippi Simmental Sale

SALE DAY PHONES

Jeremie Ruble, *Ruble Cattle Services*. 406-581-7940
Jeremie Ruble, *Ruble Cattle Services, alt. number* . . . 515-850-8741
Marshall Ruble, *Ruble Cattle Services*. 515-231-3198

SALE REPRESENTATIVES

Chad Stansberry, *Ringman* 706-844-3389
Billy Proffitt, *Ringman* 270-407-8555
Jacob Massey, *Ringman* 931-607-2771
Luke Mobley, *Auctioneer* 205-270-0999

ABSENTEE BIDDING

Bids may be accepted by sale representatives or sale managers.
Sale day phone is 406-581-7940

SALE UPDATES

We have made every attempt to supply the most current and accurate information available
on the cattle being offered. Any updated or additional information made available at the
sale will take precedence over previously printed material.

SALE ORDER

A supplement sheet and sale order will be available sale day.

LIABILITY

All persons who attend the sale do so at their own risk and neither owners, Ruble Cattle
Services or Cullman Stockyard assumes any responsibility, legal or otherwise, for damages,
accidents, theft, errors in the catalog or omissions. All cattle are at the purchaser's risk as
soon as sold. Assistance will be offered in loading and/or shipment of cattle, but no risk is
assumed by any group of individual associated with the sale.

ONLINE BIDDING

DVAuction Tech Support 402-316-5460
Bid live online at www.dvauction.com. Information on page 16.



ALABAMA SIMMENTAL ASSOCIATION

Clayton Young, *President*. 678-836-9538
Bradley Gibbs, *Vice-President*. 404-904-2914
Amy Burgess, *Secretary/Treasurer* 256-558-7443

MISSISSIPPI SIMMENTAL ASSOCIATION

Todd Fenton, *President* 601-498-4946
Clayton Buse, *Vice-President*
Deena Branum, *Secretary/Treasurer* . . 601-310-4440
Helen Buse, *Junior Advisor*



LOT 1



**RVR ROGUE 530H
SIRE OF LOT 51**



**RVR TYSON 429K
SERVICE SIRE OF LOT 2**



LOT 2

LONESOME PINE FARM

1 BLPF MISS BELLE M8

BD: 9/4/24 / ASA#: 4532423 / Tattoo: M8 / 5/8 SM 3/8 AN
Bred Heifer / Homozygous Polled / Homozygous Black

HOOK'S EAGLE 6E
RVR ROGUE 530H
RC MISS RAPID FIRE 226F



BLPF TOP CHOICE A6
BLPF MISS EMPRESS C2
SSF BLK HOLLY P506

CE	BW	WW	YW	MCE	Milk	MWW	Stay	Marb	BF	REA	API	TI
8.2	0.3	84.6	132.2	5.9	25.9	68.1	14.1	0.38	-0.035	1.06	129.9	85.4

AI'd to ADV COMPASS L3574 (ASA# 4212198) on 12/10/25. PE to RVR TYSON 429K (ASA# 4219089) from 12/25/25 to 4/18/26. Confirmed bred by blood test, and palpated on 4/19/26. BLPF MISS BELLE M8 is a beautiful blaze face female. Belle is the prettiest baldy female we have ever let go of. She sells bred to RVR TYSON 429K. We know this will be a magical cross. The RVR Tyson calves are big framed, long bodied and have unmatched athleticism among high growth Sim Angus bulls.

LONESOME PINE FARM

2 BLPF MISS LOUISE M12

BD: 10/19/24 / ASA#: 4532444 / Tattoo: M12 / 1/2 SM 1/2 AN
Bred Heifer / Homozygous Polled / Homozygous Black

COLEMAN VENTURE 403
BLPF MR MAJOR G4
BLPF MISS MAGGIE B11



TJ MAIN EVENT 503B
BLPF MISS GINGER K27
BLPF YELLOW WITCH C51

CE	BW	WW	YW	MCE	Milk	MWW	Stay	Marb	BF	REA	API	TI
17.3	-1.4	72.7	103.1	7.7	22.7	59.3	18.6	0.17	-0.042	0.24	134.4	74.7

AI'd to RVR TYSON 429K (ASA# 4219089) on 12/10/25. PE to RVR TYSON 429K (ASA# 4219089) from 12/25/25 to 4/18/26. Confirmed bred by blood test, and palpated on 4/19/26. BLPF MISS LOUISE M12 is deep bodied slick haired half blood bred with a unique combinations of high calving ease, light birthweight and an outcross pedigree. She sells bred to RVR TYSON 429K who is a freak who offers a huge spread and impeccable carcass. This calf will be a standout. The RVR Tyson 429K calves are out performing the KBHR Homelanders at River Creek Farms.

LONESOME PINE FARM

3 **BLPF MISS CHASITY M17**

BD: 9/9/24 / ASA#: 4532435 / Tattoo: M17 / PB SM
Bred Heifer / Homozygous Polled / Homozygous Black

HHS MR 847D
KBHR REVOLUTION H071
WS MISS SUGAR C4



WCM LMAN 59Y
BLPF MISS DORIS B15
BLPF RIGHT MOVES U15

CE	BW	WW	YW	MCE	Milk	MWW	Stay	Marb	BF	REA	API	TI
10.8	0.6	85.5	132.0	5.9	22.6	65.2	20.0	0.28	-0.051	0.88	152.4	88.4

AI'd to ADV COMPASS L3574 (ASA# 4212198) on 12/10/25. PE to RVR TYSON 429K (ASA# 4219089) from 12/25/25 to 4/18/26. Confirmed bred by blood test, and palpated on 4/19/26. BLPF MISS CHASITY M17 is a purebred Simmental daughter of KBHR REVOLUTION H071. Revolution is the king of all purebred baldy bulls producing some of the breed's best sires and donor cows. Chasity Safe AI to ADV COMPASS L3574. This calf will be able to read and write posting a top 5% YW & MARB, top 10% API and top 3% TI.



LOT 3

LONESOME PINE FARM

4 **BLPF MISS MOLLIE M7**

BD: 8/30/24 / ASA#: 4532419 / Tattoo: M7 / 5/8 SM 3/8 AN
Bred Heifer / Homozygous Polled / Homozygous Black

HOOK'S EAGLE 6E
RVR ROGUE 530H
RC MISS RAPID FIRE 226F



WCM LMAN 59Y
BLPF LUCKY GIRL B13
LPF ELEGANTDESIGN OF 878

CE	BW	WW	YW	MCE	Milk	MWW	Stay	Marb	BF	REA	API	TI
15.6	-2.6	70.6	110.8	6.4	24.8	59.9	14.5	0.46	-0.013	0.18	142.6	82.3

AI'd to ADV COMPASS L3574 (ASA# 4212198) on 12/10/25. PE to RVR TYSON 429K (ASA# 4219089) from 12/25/25 to 4/18/26. Confirmed bred by blood test, and palpated on 4/19/26. BLPF MISS MOLLIE M7 is a homo black and homo polled daughter of RVR ROGUE 530H. This is a huge bodied female who offers a super maternal pedigree, plus, she has a lot of junk in the trunk! She sells safe AI to ADV COMPASS L3574. This mating combines two great bulls from River Creek Farms.



LOT 4

YOUNG CATTLE COMPANY/ CHAMBERS FARMS

5 **KBHR MS ADONIS M341**

BD: 4/19/24 / ASA#: 4387471 / Tattoo: M341 / 5/8 SM 3/8 AN
Bred Heifer / Homozygous Polled / Homozygous Black

KBHR QUIGLEY C154
BAR CK ADONIS 0116H
BAR CK MS 3016A 8060F



KBHR HONOR H060
KBHR K225 MS HONOR
KBHR D107

CE	BW	WW	YW	MCE	Milk	MWW	Stay	Marb	BF	REA	API	TI
17.2	-2.8	72.0	118.6	10.7	28.3	64.2	16.3	0.76	-0.003	0.41	167.1	91.9

PE to YBS VITAL 4M1 (ASA# 4396575) from 9/1/25 to 12/20/25. Confirmed bred by blood test. You won't miss this one on sale day. A phenotypic standout with an ideally balanced set of epds to go with. Sleep all night calving ease and top 10% API. She is bred to our purebred homozygous black Simmental bull, YBS VITAL 4M, raised from a ET pregnancy purchased from Gibbs Farms. VITAL 4M1 fits our environment perfectly as he is slick-hided, heavy muscled, and perfectly footed. Estimated to calve in August or September and will be updated at sale time.



LOT 5



TJ CHOSEN ONE 503M - SERVICE SIRE OF LOT 6

6 4CF JILL M202

FOUR CORNER FARMS

BD: 10/28/24 / ASA#: 4434176 / Tattoo: M202 / 3/4 SM 1/4 AN
Bred Heifer / Polled / Homozygous Black

CLRS GUARDIAN 317G
GIBBS 1091J GUARDIAN
GIBBS 8040F LOUISE Y534



BRIDLE BIT ECLIPSE E744
GIBBS 0324H JILL 3215A
GIBBS 3215A JILL X378

CE	BW	WW	YW	MCE	Milk	MWW	Stay	Marb	BF	REA	API	TI
9.8	0.8	92.9	147.0	6.6	25.7	72.0	16.5	0.56	-0.032	0.90	148.8	94.3

AI'd to CCR BEDROCK 5171J (ASA# 4028738) on 11/29/25. PE to TJ CHOSEN ONE 503M (ASA# 4366332) from 12/14/25 to 2/22/26. Confirmed bred to PE dates. A direct daughter of our Gibbs Guardian herd sire, this heifer is expected to blend maternal ability with a punch of power. Vet confirmed safe to TJ Chosen 503M.



FFS JNR HARD KNOX H034 - SERVICE SIRE OF LOT 7

7 RLD ALLEY M419

CROSSROADS CATTLE CO.

BD: 12/8/24 / ASA#: 4481842 / Tattoo: M419 / PB SM
Bred Heifer / Polled /

OMF EPIC E27
SCHOOLEY STANDOUT 27G
CLRS BEAUTY QUEEN 420 B



SO REMEDY 7F
RLD ALLEY K203
PSCS ALLEY'S LADY 114G ET

CE	BW	WW	YW	MCE	Milk	MWW	Stay	Marb	BF	REA	API	TI
11.8	0.0	73.8	105.9	6.6	19.3	56.1	13.8	0.19	-0.077	0.74	130.9	79.0

AI'd to BAS New Heights M4042 (ASA# 4426391) on 12/20/25. PE to FFS JNR Hard Knox H034 (ASA# 3794725) from 1/3/26 to 3/18/26. Confirmed bred to PE dates. M419 was successfully shown around the TN Jr. circuit this past summer and fall with many class wins in the calf division and a highlight class winner at the TN State Fair. She was checked confirmed bred to the great Hard Knox bull. She is the front pasture kind!



LOT 8

8 MS HESTIA M6

DAVID FICKEN

BD: 9/7/24 / ASA#: 4482160 / Tattoo: M6 / 3/4 SM 1/4 AN
Bred Heifer / Polled / Black

HOOK'S EAGLE 6E
TJ GOLD 274G
TJ 12C



CONNEALY FINAL PRODUCT
HESTIA D1
BHR 2225

CE	BW	WW	YW	MCE	Milk	MWW	Stay	Marb	BF	REA	API	TI
8.1	0.4	75.7	115.3	6.3	22.2	60.2	16.5	0.33	-0.025	0.64	127.0	77.8

AI'd to BAS Money Maker J801 (ASA# 3978845) on 11/22/25. Confirmed bred to AI date. The TJ Gold daughters are making super cows, this female has a little more frame and is very correct in her design and is a nicely balanced bred heifer. due 8/31/2026 to BAS Money Maker J801. She is halter broke. BAS Money Maker semen is currently unavailable but his progeny are in high demand.

GINGERICH FAMILY FARM

9 **GFCF M50 MORNING**

BD: 8/22/24 / ASA#: 4425422 / Tattoo: M50 / 3/4 SM 1/4 AN
Bred Heifer / Homozygous Polled / Homozygous Black

TJ CHIEF 460G
TJ WAR PAINT 759J
TJ 2D



GIBBS 7382E BROAD RANGE
GFCF EARLY MORNING J93
SVS MORNING SUN EAS9

CE	BW	WW	YW	MCE	Milk	MWW	Stay	Marb	BF	REA	API	TI
7.7	2.5	89.6	136.6	6.4	25.9	70.6	17.9	0.44	-0.012	0.40	136.5	86.1

AI'd to GIBBS JUGGERNAUT 4399M (ASA# 4438508) on 11/19/25. PE to GIBBS HIGHWAYMAN 3130L (ASA# 4284752) from 12/1/25 to 2/8/26. Confirmed bred, too close to determine AI or PE service. M50 is a big soggy star faced female that will be sure to raise some good calves. Her dam always brings back a heavy calf at weaning. Possible chance of getting one of the first Juggernaut calves if she calves to AI. Pasture exposed to Highwayman so either way her calf should be a special one.



GIBBS JUGGERNAUT 4399M - SERVICE SIRE OF LOT 9

GINGERICH FAMILY FARM

10 **GFCF M69 PEPPERMINT**

BD: 10/2/24 / ASA#: 4425436 / Tattoo: M69 / PB SM
Bred Heifer / Homozygous Polled / Homozygous Black

BCLR MANIFESTO G352
GFCF UNLIMITED 10J
VPI SAVANNAH C557 ET



GFCF LIGHTNING D12
GFCF PEPPERMINT G43
GFCF SNICKERS EO2

CE	BW	WW	YW	MCE	Milk	MWW	Stay	Marb	BF	REA	API	TI
8.3	2.6	85.3	118.6	5.0	24.7	67.3	17.3	0.41	-0.050	0.79	144.7	87.9

AI'd to GIBBS HIGHWAYMAN 3130L (ASA# 4284752) on 11/19/25. PE to GIBBS HIGHWAYMAN (ASA# 4284752) from 12/1/25 to 2/8/26. Confirmed bred, too close to determine AI or PE service. M69 is a impressive stripe face female that has been a real eye-chacher snice day one. This is one I really wanted to keep around, just look at the mating flexibility. Complete outcross to nearly all popular sires. The Highwayman calves are just flat out good. They are heifer safe yet still have a lot of growth in them.



LOT 10



SERVICE SIRE

STEVE AND SAM AHRENS/BACK ROADS RANCH

11 **BACKROADS MISTYLANE M414**

BD: 9/1/24 / ASA#: 4539951 / Tattoo: M414 / PB SM
Bred Heifer / Polled / Black

HOOK`S BLACK HAWK 50B
HOOK`S EAGLE 6E
HOOK`S CRYSTAL 1C



LLSF VANTAGE POINT F398
BACK ROADS CLASSY J21
TSSC MS CLASSY 21D

CE	BW	WW	YW	MCE	Milk	MWW	Stay	Marb	BF	REA	API	TI
15.1	-3.8	68.7	98.2	5.2	19.8	54.1	15.6	0.48	-0.047	0.87	159.7	88.3

AI'd to TJ Take That 614M (ASA# 4366420) on 11/22/25. Confirmed bred to AI date. If its complete made, sound, and easy keeping this female is for you. We truly had a hard time deciding to part with her. We bred her to a black blaze face bull - TJ Take That. Combined these two have an awesome planned mating EPD configuration. Moderate frame, thick made, and docile attitude. She and her calf she is carrying are a great addition to any herd! First reports on TJ Take that calves are great. They come easy, most are blaze face and they are jet black.



LOT 11

BRED HEIFERS



LOT 12

12 ILL MERCY 2419

ISBELL LAND & LIVESTOCK

BD: 9/13/24 / ASA#: 4479153 / Tattoo: M2419 / 3/4 SM 1/4 AN
Bred Heifer / Heterozygous Polled / Homozygous Black

TJ STONE COLD 336G
SLN STONE COLD 3K
SLN MISS ENCORE 3H



ILL LOCK DOWN 1752
ILL KATRINA 2231
ILL GABBY 1921

CE	BW	WW	YW	MCE	Milk	MWW	Stay	Marb	BF	REA	API	TI
8.7	0.5	74.8	115.0	5.6	26.6	63.8	13.7	0.32	-0.041	0.70	121.8	77.8

PE to BCFL Honor 600M (ASA# 4492659) from 1/28/26 to 3/31/26. Confirmed bred by blood test. Black baldy SimAngus heifer that should be a great producer for years to come. Bred to BCFL Honor 600M for a fall calf.



LOT 13

13 ILL MILLIE 2421

ISBELL LAND & LIVESTOCK

BD: 9/14/24 / ASA#: 4479155 / Tattoo: M2421 / 5/8 SM 3/8 AN
Bred Heifer / Homozygous Polled / Homozygous Black

WF EASY STREET
E/F K1 EASY GOING
WF MISS H31



BALDRIDGE ALTERNATIVE E125
ILL KITTY 2240
ILL HILLARY 2009

CE	BW	WW	YW	MCE	Milk	MWW	Stay	Marb	BF	REA	API	TI
15.8	-1.6	68.1	108.3	8.5	22.9	56.8	16.1	0.40	-0.026	0.60	141.5	78.8

PE to BCFL Honor 600M (ASA# 4492659) from 1/28/26 to 3/31/26. Confirmed bred by blood test. Moderate framed black baldy SimAngus heifer with plenty of width. She is homozygous black and polled, and bred to BCFL Honor 600M for a fall calf.



LOT 14

14 ILL MUFFIN 2422

ISBELL LAND & LIVESTOCK

BD: 9/29/24 / ASA#: 4479156 / Tattoo: M2422 / 3/4 SM 1/4 AN
Bred Heifer / Homozygous Polled / Homozygous Black

REMINGTON LOCK N LOADS4U
DMCC/WOOD FULLY LOADED 39D
AUBREYS BLACK BLAZE III



W/C UNITED 956Y
NB UNITED SAGE F94
NB SAGE 10Y

CE	BW	WW	YW	MCE	Milk	MWW	Stay	Marb	BF	REA	API	TI
8.8	2.1	81.5	126.6	5.3	16.9	57.5	10.1	-0.06	-0.098	1.23	95.0	70.6

PE to BCFL Honor 600M (ASA# 4492659) from 1/28/26 to 3/31/26. Confirmed bred by blood test. Moderate framed baldy SimAngus heifer by DMCC/Wood Fully Loaded with lots of style. She is homozygous black and polled, and bred to BCFL Honor 600M for a fall calf.



LOT 15

15 ILL MILEY 2428

ISBELL LAND & LIVESTOCK

BD: 11/14/24 / ASA#: 4479159 / Tattoo: M2428 / 3/4 SM 1/4 AN
Bred Heifer / Heterozygous Polled / Black

TJ STONE COLD 336G
SLN STONE COLD 3K
SLN MISS ENCORE 3H



RPF POL RIGHT DIRECTION
RPF SACHI A24
BAR 5 SA SACHI 815S

CE	BW	WW	YW	MCE	Milk	MWW	Stay	Marb	BF	REA	API	TI
4.4	2.9	78.9	118.6	4.5	32.5	71.8	12.9	0.25	-0.068	0.79	108.3	75.8

PE to BCFL Honor (ASA# 4492659) from 1/28/26 to 3/31/26. Confirmed bred by blood test. Large framed blaze faced heifer that is the perfect combination of SimAngus and fullblood breeding. Her maternal traits make her a great addition to any program. Bred to BCFL Honor 600M for a fall calf.

ISELL LAND & LIVESTOCK

16 ILL MIDNIGHT 2420

BD: 9/14/24 / ASA#: 4479154 / Tattoo: M2420 / 3/4 SM 1/4 AN
Bred Heifer / Homozygous Polled / Heterozygous Black

TJ STONE COLD 336G
SLN STONE COLD 3K
SLN MISS ENCORE 3H



ILL SIX SHOOTER 1413
ILL KASSIDY 2230
RPF SACHI A24

CE	BW	WW	YW	MCE	Milk	MWW	Stay	Marb	BF	REA	API	TI
11.0	0.0	71.1	107.0	7.6	29.6	65.0	14.6	0.30	-0.058	0.70	124.6	76.5

PE to BCFL Honor 600M (ASA# 4492659) from 1/28/26 to 3/31/26. Confirmed bred by blood test. Larger framed SimAngus Stone Cold granddaughter. Her calves should really pack some pounds. Bred to BCFL Honor 600M for a fall calf.



LOT 16

ISELL LAND & LIVESTOCK

17 ILL MONA 2412

BD: 3/28/24 / ASA#: 4361771 / Tattoo: M2412 / PB SM
Bred Heifer / Homozygous Polled / Heterozygous Black

VPFS BRANTZ 12B
LITTLE CREEK EZEL 510E
LITTLE CREEK ANGEL 145A



HTP SVF IN DEW TIME
ILL TIMELESS 1511
ILL MS SHOOTER 1202

CE	BW	WW	YW	MCE	Milk	MWW	Stay	Marb	BF	REA	API	TI
11.2	1.4	65.5	88.4	5.6	24.7	57.4	12.1	-0.11	-0.097	0.78	104.2	65.5

PE to BCFL Honor 600M (ASA# 4492659) from 10/31/25 to 3/31/26. Confirmed bred by blood test. Beautiful Fleckvieh influenced black baldy that is homozygous polled. Bred to BCFL Honor 600M for an August calf.



LOT 17

ISELL LAND & LIVESTOCK

18 TA ROSIE 421M

BD: 3/9/24 / ASA#: 4439727 / Tattoo: 421M / PB SM
Bred Heifer / Polled / Red

OUTBACK OF DOUBLE BAR D
RUGGED R OUTBACK 0052H
TSSF MISS MOLSON A-230



GOLDEN DAWN SAMURAI
TA ROSIE 1916J
KS1 ROSIE RED

CE	BW	WW	YW	MCE	Milk	MWW	Stay	Marb	BF	REA	API	TI
7.2	5.2	75.6	109.6	2.1	28.4	66.1	12.7	-0.14	-0.107	0.68	96.6	66.2

PE to BCFL Honor 600M (ASA# 4492659) from 3/10/26 to 4/28/26. A red blaze faced purebred that is 75% fullblood. Her pedigree combines the bloodlines of Stanley Martins Fleckvieh and Rugged R Cattle, two of the nations most prominent fullblood Simmental breeders. She sells bred to BCFL Honor 600M for an early January calf.



LOT 18

ISELL LAND & LIVESTOCK

19 ILL MELANIE 2418

BD: 8/28/24 / ASA#: 4479152 / Tattoo: M2418 / FB SM
Bred Heifer / Heterozygous Polled / Red

VPFS BRANTZ 12B
LITTLE CREEK EZEL 510E
LITTLE CREEK ANGEL 145A



LITTLE CREEK ARTHUR 537A
CIRCLE E POLLED BELLA
LITTLE CREEK BERTHA 152B

CE	BW	WW	YW	MCE	Milk	MWW	Stay	Marb	BF	REA	API	TI
3.3	5.1	72.7	99.5	1.0	32.5	68.8	9.7	-0.26	-0.117	1.01	78.3	61.7

PE to Lone Stone Jerome 219J (ASA# 4042598) from 1/14/26 to 3/31/26. Confirmed bred by blood test. Polled fullblood heifer that combines the best of Circle E and Little Creek genetics. She is bred to the calving ease Canadian fullblood sire Lone Stone Jerome for a fall calf.



LOT 19

BRED COWS



LOT 20



LOT 21



BGIBBS 8153F DAISY 6223D - DAM OF LOT 22

YOUNG CATTLE COMPANY

20 YBS GABBIE 3L1

BD: 1/10/23 / ASA#: 4183957 / Tattoo: 3L1 / 5/8 SM 3/16 AR 1/8 CS 1/16 AN
Bred Cow / Polled / Red

CDI SECRET AGENT 407C
REDHILL DOUBLE AGENT 139H X
REDHILL ALLABRD 34Z 21E
REDHILL ALLABRD 5A 25E
HBC 25E F764 H808
HBC 86C A224 F764

CE	BW	WW	YW	MCE	Milk	MWW	Stay	Marb	BF	REA	API	TI
18.7	-3.9	68.1	105.1	9.6	23.9	57.8	14.6	0.33	-0.025	0.64	142.2	80.3

PE to YBS VITAL 4M1 (ASA# 4396575) from 9/1/25 to 12/20/25. Confirmed bred by blood test. GABBIE 3L1 is a red SimAngus bred cow bred to our herd sire YBS VITAL 4M1, a homozygous black purebred Simmental who was purchased as an ET pregnancy from Gibbs Farms. The Gibbs Essential son is built for our environment with a slick hide, good bone and muscle, and a balanced epd profile. GABBIE 3L1 comes in a moderate package and low energy requirements. Top 10% CE, BW, and CER. Calving date estimated for an August or September calf to be updated at sale time.

ISELL LAND & LIVESTOCK

21 ILL LYDIA 2309

BD: 4/5/23 / ASA#: 4213514 / Tattoo: L2309 / PB SM
Bred Cow / Heterozygous Polled / Heterozygous Black

VPFS BRANTZ 12B
LITTLE CREEK EZEL 510E X
LITTLE CREEK ANGEL 145A
MR WEF TUXEDO
ILL TUX N TAILS 1728
TP MISS SHOOTER C594

CE	BW	WW	YW	MCE	Milk	MWW	Stay	Marb	BF	REA	API	TI
9.5	2.0	64.7	93.8	5.9	28.4	60.7	12.3	-0.03	-0.077	0.82	106.7	66.7

PE to BCFL Honor 600M (ASA# 4492659) from 10/31/25 to 11/30/25. Confirmed bred by blood test. Great young black baldy purebred from a SimAngus/Fleckvieh breeding. Very docile and a great mother. Raised a nice heifer the first time around, and we expect no different this time. Due early fall with her second calf by BCFL Honor.

FOUR CORNER FARMS

22 BGIBBS 1J07 DAISY 8153F

BD: 9/7/21 / ASA#: 4014981 / Tattoo: 1J07 / 5/8 SM 3/8 AN
Bred Cow / Homozygous Polled / Homozygous Black

HOOK'S BEACON 56B
KBHR HIGH ROAD E283 X
WS MISS SUGAR C4
BALDRIDGE COLONEL C251
BGIBBS 8153F DAISY 6223D
BGIBBS 6223D DAISY 2Z02

CE	BW	WW	YW	MCE	Milk	MWW	Stay	Marb	BF	REA	API	TI
7.4	1.3	83.2	136.0	6.2	26.2	67.3	12.2	0.22	-0.054	1.30	115.9	80.3

PE to TJ CHOSEN ONE 503M (ASA# 4366332) from 12/14/25 to 2/22/26. Confirmed bred to PE dates. A really good opportunity to get in on some of the most popular genetics in the Simmental breed. A direct daughter of BGIBBS 8153F DAISY 6223D, making her a maternal sister to GIBBS BLAZER 3L02. This cow has done fantastic in our herd; producing bulls that have the look and power cattlemen want.

BID ONLINE at
www.dvauction.com/events/271196



DVAuction



YOUNG CATTLE COMPANY

23 YBS 2K9 5N1

BD: 2/16/25 / ASA#: 4494294 / Tattoo: 5N1 / 1/2 SM 1/2 AN
Open Heifer / Homozygous Polled / Homozygous Black

GIBBS HILLTOP 0062H
GIBBS 2570K HILLTOP
GIBBS 9541G HARCREST 6314D



BGIBBS 8306F MARSHALL
YBS 2K9
GIBBS 5045C BLKCAP 0644X

CE	BW	WW	YW	MCE	Milk	MWW	Stay	Marb	BF	REA	API	TI
3.5	2.6	99.7	164.1	5.8	27.7	77.2	15.2	0.79	-0.044	1.13	151.6	101.5

Breed leading growth and carcass traits in a sound structure and great docility.
Top 5% in WW, YW, REA, and TI. Top 10% Marb



LOT 23

YOUNG CATTLE COMPANY

24 YBS VERDICT 5N3

BD: 2/23/25 / ASA#: 4494291 / Tattoo: 5N3 / 5/8 SM 3/16 AR 1/8 CS 1/16 AN
Open Heifer / Polled / Red

CDI ABUNDANCE 391C
CDI/NF HONOR GUARD 267H
CDI MISS VERDICT 141C



REDHILL ALLABRD 5A 25E
HBC 25E F764 H808
HBC 86C A224 F764

CE	BW	WW	YW	MCE	Milk	MWW	Stay	Marb	BF	REA	API	TI
18.9	-4.0	61.2	92.4	9.8	23.7	54.2	19.8	0.43	-0.012	0.67	155.0	78.4

A neat breeding piece here for those wanting to add some easy fleshing, low input genetics into their herd. Nice made, thick, red SimAngus heifer out of CDI Honor Guard. Tons of red all star cattle in her pedigree too. Her dam is an H model with her 4th AI calf on the ground now.



LOT 24

YOUNG CATTLE COMPANY

25 YBS ULTA 5N6

BD: 3/3/25 / ASA#: 4494295 / Tattoo: 5N6 / 1/4 SM 13/32 AN 11/32 CS
Open Heifer / Polled / Black

CCR BONAFIDE 5116F
CCR PRIMAL 8036K
CCR MS COMMAND 8036F



GIBBS 0617XHY ULTRASOUND
YBS SY1

CE	BW	WW	YW	MCE	Milk	MWW	Stay	Marb	BF	REA	API	TI
3.6	3.6	98.7	152.3	6.3	28.2	77.5	16.0	0.58	0.000	0.90	137.1	93.4

One of the first CCR Primal offspring to be offered in the country. ULTA 5N6 is made for the southeast being slick hided, super structured, and great docility. She's out of a 9 year old cow that hasn't missed. Look for her to raise some scale crushers.



LOT 25

YOUNG CATTLE COMPANY

26 YBS PRIM 5N7

BD: 3/6/25 / ASA#: 4494298 / Tattoo: 5N7 / 1/2 SM 1/2 AN
Open Heifer / Homozygous Polled / Homozygous Black

CCR BONAFIDE 5116F
CCR PRIMAL 8036K
CCR MS COMMAND 8036F



GIBBS 3133A MOUNTAINEER
GIBBS 5014C BLKCAP 0644X
GIBBS 0644X BLKCAP 8020U

CE	BW	WW	YW	MCE	Milk	MWW	Stay	Marb	BF	REA	API	TI
3.5	4.9	99.1	162.0	6.5	36.5	85.9	15.2	0.66	-0.022	0.84	139.3	95.4

Another one of the first CCR Primal daughters to sell in the country. Very similar in kind to her 5N6 half-sister, but with a tick more length. Her dam is a 10 year-old Gibbs Mountaineer daughter who fits our program perfectly and with her 8th calf. 5N7 is from the top of the replacement pen and being sold as a feature of our program. Top 5% WW, YW, ADG. Top 15% TI



LOT 26

OPEN HEIFERS



LOT 27

27

YBS NIKA 5N8

YOUNG CATTLE COMPANY

BD: 3/8/25 / ASA#: 4494293 / Tattoo: 5N8 / PB SM
Open Heifer / Polled / Red

CDI ABUNDANCE 391C
CDI/NF HONOR GUARD 267H
CDI MISS VERDICT 141C

X

HOOK'S XPECTATION 36X
REDHILL 36X 363L 69Z
GW MISS LUCKY STRIKE 363

CE	BW	WW	YW	MCE	Milk	MWW	Stay	Marb	BF	REA	API	TI
10.1	0.7	73.8	111.4	5.3	29.8	66.6	22.6	0.48	-0.084	0.96	163.3	87.4

You won't find many red purebred Simmentals raised in the southeast, so here is your chance. Very balanced genetic profile with a jam up pedigree. Sired by CDI Honor Guard and with a 14 year-old dam still in production. A rock solid pedigree and proven genetics to boot. Top 15% API. Tom Hook has always bragged about how good his daughters of Hook's Xpection 36X are. They are increasingly hard to come by.



KBHR REVOLUTION H071 - SIRE OF LOT 28

28

CRDS DIAMOND N341

CROSSROADS CATTLE CO.

BD: 3/31/25 / ASA#: 4579002 / Tattoo: N341 / 1/2 SM 1/2 AN
Open Heifer / Homozygous Polled / Black

KBHR REVOLUTION H071
SCHOOLEY LEO 064L
SCHOOLEY MISS 859F 064H

X

SAV MOMENTUM 9274
CROSSROADS DIAMOND L307
SAV EMBLYNETTE DIAMOND 8517

CE	BW	WW	YW	MCE	Milk	MWW	Stay	Marb	BF	REA	API	TI
13.1	0.3	69.4	109.4	8.3	27.9	63.3	15.4	0.52	-0.006	0.60	139.6	80.0

N341 is a complete made halfblood out of our Schooley Leo 064L herdsire. We have been very impressed with all of his progeny as Ruble picked him out of their 2024 sale for us. Breed her to the bull of your choice and sells with GE epds.



FFS JNR HARD KNOX H034 - SIRE OF LOT 29

29

CRDS HENRIETTA N223

CROSSROADS CATTLE CO.

BD: 4/12/25 / ASA#: 4545429 / Tattoo: N223 / 3/4 SM 1/4 AN
Open Heifer / Polled / Heterozygous Black

W/C FORT KNOX 609F
FFS JNR HARD KNOX H034
HILB MISS VERSACE E57C

X

W/C BANKROLL 811D
CRDS HENRIETTA K232
DEER VALLEY HENRIETTA 4741

CE	BW	WW	YW	MCE	Milk	MWW	Stay	Marb	BF	REA	API	TI
12.8	-2.0	66.2	101.0	5.9	21.2	54.1	9.1	0.22	-0.033	0.73	113.2	73.2

Stylish and ultra feminine made Hard Knox daughter. N223 is a baldy and ready to breed to the bull of your choice. Sells with GE epds.



OMF EPIC E27 - MATERNAL GRANDSIRE OF LOT 30

30

CRDS QUEEN 5408N

CROSSROADS CATTLE CO.

BD: 4/17/25 / ASA#: 4545431 / Tattoo: 5408N / 3/4 SM 1/4 AN
Open Heifer / Polled /

SCHOOLEY JUDGMENT 68J
SCHOOLEY LILBIT 887L
SCHOOLEY MISS 420B 074H

X

OMF EPIC E27
SCHOOLEY MISS 919G 258K
SCHOOLEY MISS 904Z 919G

CE	BW	WW	YW	MCE	Milk	MWW	Stay	Marb	BF	REA	API	TI
14.8	-2.0	71.9	108.4	7.0	23.7	60.2	17.5	0.42	-0.020	0.55	145.0	81.7

A moderate framed baldy heifer with GE epds. She is sound made and will make a very nice replacement heifer. Ready to breed to bull of your choice.

TD CATTLE

31 *DIFF SHINE`S VISION N509*

BD: 5/1/25 / ASA#: 4667788 / Tattoo: N509 / PB SM
Open Heifer / Polled / Black

MR CCF 20-20

SJR QUANTUM VISION 224K
CLPP KITTY 008H



TKCC CLASSIFIED

HLVW CLASSY SHINE 1890
HLVW SECRET SHINE 101A



LOT 31

CE	BW	WW	YW	MCE	Milk	MWW	Stay	Marb	BF	REA	API	TI
10.5	1.2	72.0	99.9	4.6	19.3	55.1	11.2	0.03	-0.082	0.89	112.7	72.6

N509 is one that has cow power written all over her Going back to the very well known HLVW SECRET SHINE 101A on the bottom side and 20/20 on the top side Genetics like these are timeless and are getting harder to find. Coming to you in a purebred package the opportunities are endless.



LOT 32A



LOT 32B

EAST FORK FARMS INC

32A *TRIB MS COMFORT N502*

BD: 9/2/25 / ASA#: 4635647 / Tattoo: N502 / 5/8 SM 3/8 AN
Open Heifer / Polled / Black

GW COMFORT ZONE 651Y
ROCKHILL SFG MR COMFORT
RITA 5M76 RITA 2K4 PRED



X/L COW MAKER
ROCKHILL GLORY GIRL LR35
ROCKHILL GLORY GIRL FR24

CE	BW	WW	YW	MCE	Milk	MWW	Stay	Marb	BF	REA	API	TI
16.7	-3.0	56.5	89.6	8.0	28.0	56.6	20.4	0.42	-0.024	0.48	149.9	74.5

EAST FORK FARMS INC

32B *TRIB MS LUCY N504*

BD: 10/3/25 / ASA#: 4635652 / Tattoo: N504 / 3/8 SM 1/2 AR 1/8 AN
Open Heifer / Polled / Heterozygous Black

BUF CRK MEDALLION N328
BUF CRK NICE`N EASY T189
BUF CRK REDPRIDE P154



X/L COW MAKER
ROCKHILL MISS LUCY LR37
REDHILL 213B 140C 148F

CE	BW	WW	YW	MCE	Milk	MWW	Stay	Marb	BF	REA	API	TI
14.6	-2.6	62.2	95.2	5.8	24.1	55.2	18.5	0.39	0.001	0.21	139.2	74.0

We purchased both of these heifers dams in last years sale as bred heifers. Both females did an outstanding job raising these two females, so We decided to bring them both and offer choice on either N504 or N502. N504 is pretty unique in her own right being a solid black halfblood red angus Dont let her only being a 3/8 Simmental deter you She will flit get the job done. N502 is a month older and comes in a 5/8 3/8 package packed with an awesome set of epds. Selling Choice on these females with the option to double down and take both and on top of that we will throw in a straw piece of BAS NEW HEIGHTS to breed them to run a planned mating on that and you will NOT be disappointed.



LOT 33

33

MS JUDY N4

DAVID FICKEN

BD: 9/14/25 / ASA#: 4652148 / Tattoo: N4 / 1/2 SM 1/2 AN
Open Heifer / Polled / Black

HOOK'S EAGLE 6E
BAS MONEY MAKER J801
BAS MISS BEACON F801



730

CE	BW	WW	YW	MCE	Milk	MWW	Stay	Marb	BF	REA	API	TI
14.7	-2.1	77.5	118.9	8.5	24.8	63.4	9.9	0.50	-0.027	0.84	137.3	87.5

Super attractive half blood daughter of BAS Money Maker J801 with a great disposition. A long sided female that straight in her lines with a lot of eye appeal. She is halter broke. BAS Money Maker J801 is currently not producing and semen is unavailable. His sons and daughters have topped sales all over the country. Recently at Heartland Simmentals 50th Anniversary Sale they topped all of the categories and sold to customers all over the country.



LOT 34

34

CYP PANDA N510

CYPRESS CREEK FARMS

BD: 11/15/25 / ASA#: 4667842 / Tattoo: N510 / 5/8 SM 1/4 CS 1/8 AN
Open Heifer / Polled / Black

MR CCF 20-20
SJR QUANTUM VISION 224K
CLPP KITTY 008H



MR CCF COMMON COURTESY
PANDA H100
X23

CE	BW	WW	YW	MCE	Milk	MWW	Stay	Marb	BF	REA	API	TI
9.8	2.1	76.7	109.1	4.5	18.9	57.1	8.1	0.03	-0.079	0.77	106.0	74.2

Panda is an exciting young female sired by a 20-20 son and backed by the influential Jstrestress cow family from C&C Farms. Combining a strong pedigree with eye appeal and structural correctness, she represents the kind of genetic package that adds value. She has the potential to make a lasting impact and will be a standout addition to any progressive program.

**At Premier Select Sires
we promise to provide...**

QUALITY SERVICE.

ACCESS TO MARKETING.



HIGHER REPRODUCTIVE EFFICIENCY.

ELITE SIRES.

**Your business demands more...
WE DELIVER MORE.**



(800) 227-6417 • www.premierselectsires.com • [social media icons]

Contact your local Premier representative to get **MORE** today!

Len Holliman • Area Sales Manager • (205) 331-9479
Jacob Johnson • Area Sales Manager • (601) 867-2555
Jim Yance • Regional Beef Program Manager • (334) 726-7342

FOUR CORNER FARMS

35 4CF FANCY L3582

BD: 9/21/23 / ASA#: 4287252 / Tattoo: L3582 / 3/4 SM 1/4 AN
Cow-Calf Pair / Homozygous Polled / Homozygous Black

HOOKS SHEAR FORCE 38K
HOOK'S BEACON 56B
HOOKS ZAFIRAH 41Z



BRIDLE BIT ECLIPSE E744
GIBBS 1346J FANCY 7144E
GIBBS 7144E FANCY 5130C



LOT 35



LOT 35A SIRE

CE	BW	WW	YW	MCE	Milk	MWW	Stay	Marb	BF	REA	API	TI
18.1	-3.1	78.7	125.5	11.4	29.1	68.4	20.0	0.88	-0.020	0.79	185.7	99.9

35A: Bull Calf / ASA#: 4639416 / DOB: 11/25/25 / Tattoo: N5020

Act. BW: 72# / Sired by 4CF SOLSTICE L706 (ASA#: 4287242)

Sells open and ready to breed. We really hate to part with this one. Any cattlemen who has been around the Simmental breed knows the legacy Hook's Beacon 56B left through his daughters. This one is no exception. Out of one of our very best cows, we expect L3582 to mature into an ideal brood cow. She bred up late as a heifer and is out of our calving window, but will make an excellent addition to a spring herd.

CROSSROADS CATTLE CO.

36 W5 EPIC MAE 265K

BD: 3/22/22 / ASA#: 4144669 / Tattoo: 265K / PB SM
Cow-Calf Pair / Polled / Black

W5 ALL-AROUND Z35
OMF EPIC E27
OMF TIME LESS B100



HPF QUANTUM LEAP Z952
PSSC QUANTUM MAE 218H
PSSC ALLEY MAE 144E



OMF EPIC E27 - SIRE OF LOT 36

CE	BW	WW	YW	MCE	Milk	MWW	Stay	Marb	BF	REA	API	TI
11.3	0.5	85.1	124.7	6.8	22.1	64.6	12.8	0.17	-0.066	0.87	131.6	85.2

36A: Heifer Calf / ASA#: 4660987 / DOB: 1/5/26 / Tattoo: P636

Act. BW: 73# / Sired by SJRF County Line J179 (ASA#: 4062795)

PE to FFS JNR Hard Knox H034 (ASA# 3794725) from 1/5/26 to 3/18/26. Epic daughter with a bright future ahead of her, heifer calf at side.

TRIPLE S LAND & CATTLE

37 SSS COPPERHEAD 686J

BD: 10/9/21 / ASA#: 4056928 / Tattoo: 686J / 3/4 SM 1/4 AN
Cow-Calf Pair / Polled / Heterozygous Black

ERIXON BITTEN 203A
SAS COPPERHEAD G354
SAS MISS ARAPHAOE B354



SSS DAYDREAM 386T
ROCKHILL ACCLAIM RX9
ROCKHILLACCLAIMMADAM TR2



BLPF LANDMAN L21 - SERVICE SIRE OF LOT 37

CE	BW	WW	YW	MCE	Milk	MWW	Stay	Marb	BF	REA	API	TI
5.2	3.2	88.1	129.6	4.6	18.7	63.0	6.5	0.25	-0.046	0.52	98.1	78.8

37A: Heifer Calf / ASA#: 4629893 / DOB: 11/5/25 / Tattoo: 744N

Act. BW: 70# / Sired by LCDR Reserve (ASA#: 3960639)

Al'd to BLPF LANDMAN L21 (ASA# 4356774) on 12/27/25. Very productive young cow we offering in 686j, with outstanding blk blazed face Reserve heifer at side. Copper Reserve will be competitive if some jr wants a project but better yet this cow family has performed for a long time for us. We are keeping a Progressive daughter as replacement and this young cow will continue the family production, A Landman calf should be special too!



LOT 38

RVR JORDAN23 478L is one of the best Sim Angus bulls in the breed. He was a former high selling bull at the River Creek Farms Sale. His semen has only been offered at select sales in small packages. His first calves are outstanding. He adds a tremendous amount of volume and structural integrity. He also is top 1% WW, YW, CW, & TI, top 5% MARB and top 10% API. This is the most unique lot ever offered in the history of this sale. Offering lifetime fall possession on a top young SimAngus sire. The new fall partner will coordinate delivery with our spring partner, Kearns Cattle Co., Rushville, NE. Semen interest in this bull is jointly owned in partnership with Kearns Cattle Co., Eichacker Simmentals, and River Creek Farms, combining three progressive programs committed to advancing high-value SimGenetics.



LOT 39

CROSSROADS CATTLE CO.

38 RVR JORDAN23 478L

BD: 9/11/23 / ASA#: 4374857 / Tattoo: 478L / 1/2 SM 1/2 AN
Bull / Homozygous Polled / Homozygous Black

E W A PEYTON 642
ROSEDA POWERBALL23 F091
ROSEDA BLACKCAP B103 D118



WS ALL-AROUND Z35
RC MISS ALL-AROUND 031C
RC MISS TOP GRADE 040A

CE	BW	WW	YW	MCE	Milk	MWW	Stay	Marb	BF	REA	API	TI
13.0	0.4	108.7	172.0	8.5	23.4	77.6	15.1	0.88	0.022	0.82	173.7	111.5
40	60	1	1	25	60	4	55	5	99	30	10	1

CHAMBERS FARMS

39 2CF KENWORTH

BD: 3/2/25 / ASA#: 4661094 / Tattoo: N357 / 1/2 SM 1/2 AN
Bull / Homozygous Polled / Homozygous Black

YON FULL FORCE C398
GIBBS 9121G KENWORTH
GIBBS 0532X SM STAR P342



HOOKS ADMIRAL 33A
GIBBS 5737C QUEEN X422
PDF BLK QUEEN X422

CE	BW	WW	YW	MCE	Milk	MWW	Stay	Marb	BF	REA	API	TI
11.5	-0.3	80.8	135.0	8.1	24.5	64.8	12.9	0.49	-0.010	0.52	138.0	86.7

This bull comes from a proven 10-year-old dam that has consistently produced year after year, demonstrating longevity and reliability in the herd. He is an above-average framed bull with added muscle and strong foot structure, making him a sound and functional option for any operation. Genomic Enhanced EPDs to be updated by sale day.

ISBELL LAND & LIVESTOCK

40X ILL MAVERICK 2432

BD: 12/20/24 / ASA#: 4479167 / Tattoo: M2432 / 1/2 SM 1/2 AN
Bull / Homozygous Polled / Homozygous Black

GIBBS 9121G KENWORTH
GIBBS 2568K KENWORTH
GIBBS 7379E JOSIE 4053B



W/C BANKROLL 811D
HLVW BANKROLL LADY 222
TOP LINE LADY 5102

CE	BW	WW	YW	MCE	Milk	MWW	Stay	Marb	BF	REA	API	TI
8.5	1.4	76.2	116.7	6.0	25.2	63.8	16.1	0.35	0.001	0.72	126.2	77.5

Homozygous black and polled baldy SimAngus by Gibbs Farms' GIBBS 2568K Kenworth, out of a daughter by W/C Bankroll 811D. Maverick is really laid back and has a great disposition.



LOT 40X

ISBELL LAND & LIVESTOCK

40 ILL NOLAN 2505

BD: 2/3/25 / ASA#: 4622343 / Tattoo: N2505 / 1/2 SM 1/2 AR
Bull / Heterozygous Polled / Red

SPUR FRANCHISE OF GARTON
9 MILE FRANCHISE 6305
C-BAR ABIGRACE Y11



CROSSROAD RADIUM 789U
ILL JADE 2106
ILL GRACIE 1919

CE	BW	WW	YW	MCE	Milk	MWW	Stay	Marb	BF	REA	API	TI
8.9	0.7	69.2	106.3	6.2	36.3	70.8	15.2	0.16	-0.046	0.76	113.7	71.3

Red SimAngus are all the rage, and Nolan is a great example why. Sired by 9 Mile Franchise and out of a Crossroad Radium daughter, Nolan combines the best of both worlds in a dark red, easy fleshing package.



LOT 40

ISBELL LAND & LIVESTOCK

41 ILL NITRO 2502

BD: 2/3/25 / ASA#: 4622340 / Tattoo: N2502 / PB SM
Bull / Homozygous Polled / Homozygous Black

HOOK'S EAGLE 6E
BAS MONEY MAKER J801
BAS MISS BEACON F801



MR HILLSTOWN
ILL MAGIC TIME 1702
ILL MS SHOOTER 1205

CE	BW	WW	YW	MCE	Milk	MWW	Stay	Marb	BF	REA	API	TI
12.1	-0.1	85.3	126.6	6.8	22.0	64.5	14.4	0.23	-0.077	1.00	140.9	88.1

A homozygous black and polled baldy Money Maker son, Nitro is a heifer bull that will add some size and style to your next calf crop.



LOT 41

ISBELL LAND & LIVESTOCK

42 ILL NIKO 2506

BD: 2/4/25 / ASA#: 4622344 / Tattoo: N2506 / 5/8 SM 3/8 AN
Bull / Homozygous Polled / Homozygous Black

HOOK'S EAGLE 6E
RVR ROGUE 530H
RC MISS RAPID FIRE 226F



MR WEF TUXEDO
ILL BLACK TUXEDO 1746
ILL MISS SHOOTER 1310

CE	BW	WW	YW	MCE	Milk	MWW	Stay	Marb	BF	REA	API	TI
12.9	-0.9	71.9	112.3	6.7	24.1	60.0	15.2	0.31	-0.021	0.72	130.6	77.6

Homozygous black and polled baldy SimAngus by River Creek Farms' RVR Rogue 530H. Niko is a heifer safe option that doesn't sacrifice growth.



LOT 42



ISBELL LAND & LIVESTOCK

43 ILL NEAL 2515

BD: 2/28/25 / ASA#: 4622353 / Tattoo: N2515 / PB SM
Bull / Polled / Black

WF EASY STREET
E/F K1 EASY GOING
WF MISS H31



HOOK'S BEACON 56B
LITTLE CREEK FLORI 525F
VPFS DELANIE 19D

CE	BW	WW	YW	MCE	Milk	MWW	Stay	Marb	BF	REA	API	TI
9.8	0.6	71.0	106.7	5.4	29.0	64.6	16.7	0.28	-0.049	0.89	138.4	80.0

Homozygous black blaze faced purebred bull out of one of our top donors. He boasts a good epd profile and is a outcross option for most of today's popular pedigrees.



CYPRESS CREEK FARMS/ TD CATTLE

44 TD/CYP HEDGED BETS

BD: 3/20/25 / ASA#: 4663157 / Tattoo: N505 / 1/2 SM 1/2 AR
Bull / Homozygous Polled / Red

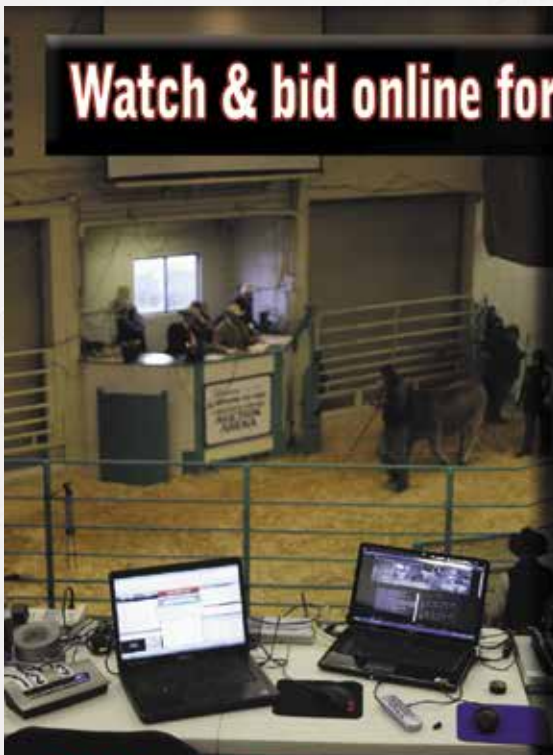
W/C FORT KNOX 609F
W/C BET ON RED 481H
W/C ANGEL 7113E



MANN PINNACLE 712
45JJ MISS LETTI L305
45JJ HATTIE H02

CE	BW	WW	YW	MCE	Milk	MWW	Stay	Marb	BF	REA	API	TI
10.5	0.3	66.3	98.9	5.3	25.4	58.4	11.0	0.20	-0.024	0.45	107.6	69.3

If red bulls are your speed look no further covered in red hide and packed full of red meat. Breed him to purebred cows or commercial cows and We gurantee you'll like the results. W/C BET ON RED 481H is now deceased and his semen is high and hard to come by.



Watch & bid online for **FREE** at

DVAuction
Broadcasting Real-Time Auctions

Can't make the sale? Bid from home with DV Auction's "real-time" internet bidding service!

Buying online is as easy as 1, 2, 3...

1. Create an account at www.dvauction.com under the "register" tab
2. Apply for bidding approval by clicking on the "details" tab at least 24 hours prior to the auction-a DV representative will notify you once you have been approved
3. Tune in for the sale and make you purchases!

After the sale, contact the sale manager or owner to arrange transportation and payment. **High speed internet** is required for successful bidding-be sure to check the lag-time monitor in the top left corner to ensure real-time broadcasts.

Proxy Bidding-if you can't make time to watch the sale, register a proxy bid and let our system represent your bid while you're away. Look for the "proxy bid" tab on the auction listing, and fill in your maximum bids. We'll handle the rest!

Having troubles? During the auction, you can type a message to the operator at any time for assistance. Our full-time support team can also always be reached at (402) 474-5557.

DVAuction
Broadcasting Real-Time Auctions

Full Service Livestock Marketing
Video - Photography - The Stock Exchange - Ring Service - Banner Ads - Onsite Viewing Service



COMMERCIAL FEMALE GROUP - LOTS 45-52

CONSIGNED BY EAST FORK FARMS INC

Commercial bred heifers have become a hot commodity over the last few years and we feel this set is no exception These heifers are from the heart of our replacement pen. Gibbs Farms enthusiasts take note these heifers are sired by Gibbs bulls and bred to Gibbs Bulls (4438105,4438329,4438270) 5 baldys and 3 solid blacks all checked 100-110 days at preg check on 3/24/26. Send some older cows to town and replace them with this set of fall calving heifers.

Breeding information on all commercial females: PE to GIBBS 4025M STONE COLD (ASA# 4438329) from 11/14/25 to 2/25/26. PE to GIBBS 4101M RARITY (ASA# 4438270) from 11/14/25 to 2/25/26.

LOT#	TATTOO	BD	COLOR	POLLED	ADDITIONAL BREEDING INFO
45	2401	9/1/24	Black	Polled	Confirmed bred to PE dates.
46	2402	9/1/24	Black	Polled	Confirmed bred to PE dates.
47	2403	9/1/25	Black	Polled	Confirmed bred to PE dates.
48	2404	9/1/24	Black	Polled	Confirmed bred to PE dates.
49	2405	9/1/24	Black	Polled	Confirmed bred to PE dates.
50	2406	9/1/24	Black	Polled	Confirmed bred to PE dates.
51	2407	9/1/24	Black	Polled	Confirmed bred to PE dates.
52	2408	9/1/24	Black	Polled	Confirmed bred to PE dates.



JC MS MAYHAYLEY 109J - LOT 53 DONOR



**SCHOOLEY/EOR MAINSTAY M06
SIRE OF LOT 53 EMBRYOS**



**GIBBS BLAZER 3L02
SIRE OF LOT 54 EMBRYOS**



GIBBS 3273L STAR 3134A - LOT 54 DONOR

GIBBS FARMS

53 JC MS MAYHAYLEY 109J

BD: 2/4/21 / ASA#: 3870336 / Tattoo: JC109J / 1/2 SM 1/2 AN
Embryos / Homozygous Polled / Homozygous Black

LEACHMAN PROPHET J030Z
SOUTHERN FORTUNE TELLER
GW MISS PREM BEEF 246Z



LT 598 BANDO 9074
TJ 8T
MS MISS 306R

Embryos by SCHOOLEY/EOR MAINSTAY M06 (ASA# 4425229), 1/2 SM 1/2 AN Calf

CE	BW	WW	YW	MCE	Milk	MWW	Stay	Marb	BF	REA	API	TI
13.9	-0.8	91.9	147.9	8.8	32.1	77.8	18.6	0.89	-0.020	1.01	179.6	104.2

Selling 5 IVF, Unsorted, Conventional Semen embryos. Guaranteeing 2 pregnancies if implanted by a certified embryologist. Stored at Gibbs Farms (Ranburne, AI). This is a mating from our most exciting Donor and Herd bull. Jc Mayhayley is a cow that has proven her worth with her first set of ET calves in the fall of 2025. We purchased her from JC Simmental along with All Beef and Salinas Farms. She sold the Highest-selling bull and open heifer in our program in the same year for \$80,000 and \$40,000! Her son Gibbs Elite has taken the industry by storm and has many pregnancies across the country. She is extremely deep ribbed with a perfect udder. Schooley/EOR Mainstay is one of the most talked about bulls in the industry with the numbers to prove it. We acquired him with River Creek Farms from Schooley Cattle Company/English Oaks. He has sold hundreds of units of semen, averaging \$130 per unit. This is the first-ever embryo mating offered from the Top Baldy Phenom Mainstay, backed by an explosive and proven Dam. We are selling 5 IVF embryos, and we are guaranteeing 2 successful pregnancies if performed by a certified Embryologist.

GIBBS FARMS

54 GIBBS 3273L STAR 3134A

BD: 9/7/23 / ASA#: 4284333 / Tattoo: 3273L / 1/2 SM 1/2 AN
Embryos / Homozygous Polled / Homozygous Black

MUSGRAVE 316 STUNNER
DB ICONIC G95
DB MS DISCOVERY D13



RCR STETSON T17
GIBBS 3134A STAR 0532X
GIBBS 0532X SM STAR P342

Embryos by GIBBS BLAZER 3L02 (ASA# 4284862), 1/2 SM 1/2 AN Calf

CE	BW	WW	YW	MCE	Milk	MWW	Stay	Marb	BF	REA	API	TI
9.4	0.9	99.9	165.9	6.6	26.0	76.3	19.1	0.93	-0.020	0.84	176.7	106.2

Selling 6 Conventional Embryos, Conventional Semen embryos. Guaranteeing 2 pregnancies if implanted by a certified embryologist. Stored at Gibbs Farms (Ranburne, AI). Gibbs 3273L is a young one in the donor pen, but her Dam has paved the way for her. She is a rising Star backed by the foundation Star family in our program. She is explosively powerful with outstanding udder and feet quality, while still having a feminine but powerful look. Gibbs Blazer was the highest-selling sire in Allied's program in 2025, and the calves we are weaning from him are phenoms. Plus, you count on the added value of the blaze-faced progeny! This is a powerful mating that will wean at the top of the pen, guaranteed. We are guaranteeing 2 successful pregnancies if done by a licensed embryologist.



GIBBS 9541G HARCREST 6314D - LOT 55 DONOR



**GIBBS HIGHWAYMAN 3130L
SIRE OF LOT 55 EMBRYOS**



**KRRS TRIFECTA 475M
SIRE OF LOT 56 EMBRYOS**



GIBBS LADY MAY 4248M - LOT 56 DONOR

GIBBS FARMS

GINGERICH FAMILY FARM / BARRETT BILLINGSLEY

55 GIBBS 9541G HARCREST 6314D

BD: 9/30/19 / ASA#: 3716410 / Tattoo: 9541G / 1/2 SM 1/2 AN
Embryos / Homozygous Polled / Homozygous Black

CCR COWBOY CUT 5048Z
TJ FIRST CUT 1109C
TJ MISS UPWARD Z5



RLWF PROPHET MARGIN 1393
GIBBS 6314D HARCRST4086B
GIBBS 4086B HARCRST X391

Embryos by GIBBS HIGHWAYMAN 3130L (ASA# 4284752), 5/8 SM 3/8 AN Calf

CE	BW	WW	YW	MCE	Milk	MWW	Stay	Marb	BF	REA	API	TI
13.3	-1.0	93.6	148.6	8.9	30.1	76.8	18.4	0.98	0.020	0.66	183.0	106.4

Selling 3 Conventional Embryos, Conventional Semen embryos. Guaranteeing 1 pregnancy if implanted by a certified embryologist. Stored at Gibbs Farms (Ranburne, AI). We are offering 3 conventional embryos from a proven successful cow family at the top and bottom of the pedigree. We have just weaned our first set of Gibbs Highwayman calves, and we can assure you there will be more for many years to come. They are extremely sound, with tons of eye appeal, depth of body, and herd-leading weaning weights. This 7-year-old donor dam has been extremely productive in our herd and is admired for her striking, feminine appearance and exceptional udder. She has produced phenomenal calves, including Gibbs Cornerstone.

56 GIBBS LADY MAY 4248M

BD: 9/6/24 / ASA#: 4438492 / Tattoo: 4248M / 3/4 SM 1/4 AN
Embryos / Homozygous Polled / Homozygous Black

LBRS GENESIS G69
GIBBS CULMINATION
GIBBS 9047G LOUISE Y534



SOUTHERN FORTUNE TELLER
JC MS MAYHAYLEY 109J
TJ 8T

Embryos by KRRS TRIFECTA 475M (ASA# 4448561), PB SM Calf

CE	BW	WW	YW	MCE	Milk	MWW	Stay	Marb	BF	REA	API	TI
15.6	-1.7	97.5	157.4	8.3	33.8	82.5	20.8	0.90	-0.010	0.84	198.9	112.5

Selling 3 IVF, Unsorted, Conventional Semen embryos. Guaranteeing 1 pregnancy if implanted by a certified embryologist. Stored at Trans Ova. Lady May is the most impressive female I've seen sell. She was widely admired by many progressive cattlemen and commanded \$45,000 at the fall 2025 Gibbs Farm sale. Physically she is flawless, loaded with depth of body and cow power that everyone strives for. She will undoubtedly have a huge impact on our herd. This will probably be the only set of embryos to sell this year. Owned with Barrett Billingsley



SCHOOLEY MISS 3000A 823F - LOT 57 DONOR



**KBHR MONACO M021
SIRE OF LOT 57A EMBRYOS**



**ES MAXX MK11
SIRE OF LOT 57B EMBRYOS**



**CLRS MONTANA 2102M
SIRE OF LOT 57C EMBRYOS**



**ADV COMPASS L3574
SIRE OF LOT 57D EMBRYOS**

HIDDEN PINES CATTLE

57 SCHOOLEY MISS 3000A 823F

BD: 1/23/18 / ASA#: 3503386 / Tattoo: 823F / 1/2 SM 1/2 AN Embryos / Homozygous Polled / Homozygous Black

C R A BEXTOR 872 5205 608
G A R PROPHET
G A R OBJECTIVE 1885



TRIPLE C SINGLETARY S3H
CCR MS SINGLETARY 3000A
CCR 602M L ONE 7116T

Lot 57A: Embryos by KBHR MONACO M021 (ASA# 4387151), 5/8 SM 3/8 AN Calf

CE	BW	WW	YW	MCE	Milk	MWW	Stay	Marb	BF	REA	API	TI
8.8	2.2	111.4	176.8	8.3	26.2	81.8	16.0	1.26	-0.030	1.12	193.5	121.5

Lot 57B: Embryos by ES MAXX MK11 (ASA# 4414138), 3/4 SM 1/4 AN Calf

CE	BW	WW	YW	MCE	Milk	MWW	Stay	Marb	BF	REA	API	TI
11.7	1.1	93.3	148.6	8.8	30.7	77.3	17.4	0.83	-0.020	0.87	172.2	102.5

Lot 57C: Embryos by CLRS MONTANA 2102M (ASA# 4340152), 3/4 SM 1/4 AN Calf

CE	BW	WW	YW	MCE	Milk	MWW	Stay	Marb	BF	REA	API	TI
14.6	-1.5	91.8	144.9	10.6	25.9	71.6	18.0	0.97	-0.020	0.80	191.3	109.1

Lot 57D: Embryos by ADV COMPASS L3574 (ASA# 4212198), 3/4 SM 1/4 AN Calf

CE	BW	WW	YW	MCE	Milk	MWW	Stay	Marb	BF	REA	API	TI
9.3	1.8	105.3	169.9	8.2	27.7	80.2	16.6	1.00	-0.030	0.81	182.3	113.1

Selling 3 IVF, Unsorted, Conventional Semen embryos. Guaranteeing 1 pregnancy if implanted by a certified embryologist. Stored at Premier Genetics, Warsaw, MO. SCHOOLEY MISS 3000A 823F is one of the most proven and highly prolific Sim Angus cows in the breed. She is the foundation cow of choice for Schooley Cattle Co in their breed up program and has 127 registered progeny to date. What makes her so special is she is unbelievably well put together from the side. Plus, she is large framed and skeletally extended. She may be the best uddered A model in existence. Her sons SCHOOLEY HAGGARD A411H, SCHOOLEY KROWN 28K and SCHOOLEY KNIGHT 739K have all been exceptional. From a performance standpoint her EPD profile has stood up to the test of time as she is high growth and high indexing with a .98 on MARB while simultaneously being in the top 20% for REA. We are offering Embryos by KBHR MONACO M021, ES MAXX MK11, CLRS MONTANA 2102M & ADV COMPASS L3574. First the KBHR Monaco M021 sired embryos would be the first to come to public auction since the River Creek Farms Monaco event. This mating will result in 5/8 with some of the best figures in the business out of a \$48,000 donor a \$200,000 bull whose semen cost us \$3,400 a unit. Second, ES MAXX MK11 mating will be 3/4. His calves were the star's of the Eihacker's Simmental production sales and will be popular and widely accepted purebred Simmental breeders this next year. This will be the best mating for a higher % to 823F to date. We are also offering embryos by CLRS MONTANA 2102M who is a new outcross bull owned by Lazy C Diamond. He is exceptionally well made for his extreme calving ease and low birthweight EPD profile. Last but not least is the mating to ADV COMPASS L3574. His calving ease went up and and his birth weight EPD went down while still maintain top 1% WW, YW, ADG, MWW, DOC, CW, MARB, API & TI. He adds lots of body, fixes structure and his calves are easy fleshing. 823F works with everything these embryos will allow you to make your own donors and herd bulls. Be sure to check out her natural calf by TERS KODIAK 206K. He will sell in this year's fall sale. He might be the best son yet. Roman sold a secret weapon to make great cattle and we are glad he did and she looks cheaper by the day. We have almost 30 spring ET calves by her on the ground and will have another 17 more this fall. We believe in her whole heartedly and you should too!



**GONSIOR DOLLYS QUEEN L908
LOT 58 DONOR**



**KBHR MONACO M021
SIRE OF LOT 58A EMBRYOS**



**RFS NORTHERN EXPOSURE N14
SIRE OF LOT 58B EMBRYOS**

GONSIOR SIMMENTALS

58 GONSIOR DOLLYS QUEEN L908

BD: 9/10/23 / ASA#: 4373554 / Tattoo: L908 / 3/4 SM 1/4 AN
Embryos / Homozygous Polled / Homozygous Black

CCS/WHF OL`SON 48F
JS KEEPIN IT 90 39H
CLRS DAIRY QUEEN 606D



W/C EXECUTIVE ORDER 8543B
K-LER DOLLY`S QUEEN 609D
GW MISS GPRD 028X

Lot 58A: Embryos by KBHR MONACO M021 (ASA# 4387151), 3/4 SM 1/4 AN Calf

CE	BW	WW	YW	MCE	Milk	MWW	Stay	Marb	BF	REA	API	TI
8.3	1.1	98.7	154.8	6.7	23.4	72.7	16.6	0.96	-0.040	1.00	178.2	108.9

Lot 58B: Embryos by RFS NORTHERN EXPOSURE N14 (ASA# 4558247), 3/8 SM 1/2 CS 1/8 AN Calf

CE	BW	WW	YW	MCE	Milk	MWW	Stay	Marb	BF	REA	API	TI
11.6	-1.0	76.7	121.8	7.6	25.0	63.2	19.0	0.71	-0.030	0.72	172.5	94.2

Selling 3 IVF, Unsorted, Conventional Semen embryos. Guaranteeing 1 pregnancy if implanted by a certified embryologist. Stored at Preferred Genetics, Columbus NE. These two matings are guaranteed to grab attention. Both sires are extremely exclusive with no semen available on the open market. Monaco semen averaged nearly \$3,100, while Northern Exposure has averaged \$1,400 on their exclusive semen sales. Each mating is backed by our standout young donor L908, a female we're especially excited about. With full siblings to this donor averaging over \$12,000, she sets herself apart as the biggest bodied stoutest of the group. Her brother Gonsior Keepin the Faith, is currently marketed through Cattle Visions further validating the strength of this pedigree. Don't miss your opportunity to be among the first to access these elite, hard to find genetics. Embryos of out Monaco averaged \$1,700 on River Creeks Farms exclusive Monaco embryo sale. This is the first set of Northern Exposure embryos to be offered at public auction.

GONSIOR SIMMENTALS

59 SK RED SARA 407B E107 G13

BD: 2/13/19 / ASA#: 3536548 / Tattoo: G13 / 3/4 SM 5/32 AN 3/32 AR
Embryos / Homozygous Polled / Red

GW MOVIN ON 183C
GW MAJOR MOVE 590E
GW MISS PREDESTINED 147Y



KAPPES PENDLETON B6
SK RED SARA 407B E107
SVS RED SARA 407B

Embryos by WALSH AGAINST THE ODDS (ASA# 4256400), PB SM Calf

CE	BW	WW	YW	MCE	Milk	MWW	Stay	Marb	BF	REA	API	TI
7.8	2.2	79.1	116.3	3.0	23.6	63.2	11.3	0.11	-0.070	1.10	113.8	76.4

Selling 3 IVF, Sexed Female Semen embryos. Guaranteeing 1 pregnancy if implanted by a certified embryologist. Stored at Preferred Genetics, Columbus NE. This female may very well be the best cow in our entire operation. Anyone who has followed our program knows the impact of the Red Sara cow family. We firmly believe she stands among the elite red cows in the Simmental breed today. She is mated to the ultra stylish Against the Odds, a Cross were extremely excited about. This pairing is designed to produce high end red baldy heifers with the look balance and presence to compete at the highest level. Get in on the opportunity and make some truly standout red baldies.



SK RED SARA 407B E107 G13 - LOT 59 DONOR



MISS CCF ANGEL F321 - LOT 60 DONOR

SIRE OF LOT 60

60 MISS CCF ANGEL F321

TD CATTLE/ CYPRESS CREEK FARMS

BD: 11/15/18 / ASA#: 3850215 / Tattoo: F321 / 3/4 SM 1/4 AN
Embryos / Polled / Black

MR NLC UPGRADE U8676
MR CCF VISION
GCF MISS ELSA



GAMBLES HOT ROD
MISS CCF SHEZA BONNIEY61
MISS CCF SHEZA LOOKER

Embryos by JSUL SOMETHING ABOUT MARY 8421 (ASA# 3565879), PB SM Calf

CE	BW	WW	YW	MCE	Milk	MWW	Stay	Marb	BF	REA	API	TI
9.1	1.7	71.5	108.1	3.6	11.6	47.4	7.4	-0.02	-0.070	0.86	99.2	68.4

Selling 3 IVF, Unsorted, Conventional Semen embryos. Guaranteeing 1 pregnancy if implanted by a certified embryologist. Stored at Trans Ova, Georgia. Selling 3 embryos guaranteeing 1 Pregnancy. This mating is packed with pedigree on both sides Angel being a Vision back on a Gambles Hotrod cow mated with the ever Popular SAM these embryos are sure to impress. Especially being purebreds with Angels added Chrome the opportunities are endless here.



MISS CCF DELTA DAWN D147 - LOT 61 DONOR

SIRE OF LOT 61

61 MISS CCF DELTA DAWN D147

TD CATTLE/ CYPRESS CREEK FARMS

BD: 10/17/16 / ASA#: 3229663 / Tattoo: D147 / 1/2 SM 1/2 AN
Embryos / Homozygous Polled / Black

FBF1 COMBUSTIBLE
FBF1/SF IGNITION
FBF1 GORGEOUS LADY



B C LOOKOUT 7024
JAS JESTRESS 9015
GAMBLES JESTRESS 9035

Embryos by ROCKING P PRIVATE STOCK H010 (ASA# 3775641), 3/4 SM 1/4 AN Calf

CE	BW	WW	YW	MCE	Milk	MWW	Stay	Marb	BF	REA	API	TI
12.8	0.7	75.5	112.6	4.7	15.8	53.5	13.3	0.23	-0.070	0.50	124.9	75.7

Selling 3 IVF, Unsorted, Conventional Semen embryos. Guaranteeing 1 pregnancy if implanted by a certified embryologist. Stored at Trans Ova, Georgia. Selling 3 embryos Guaranteeing 1 pregnancy. Delta Dawn has always been impressive and still is even today as a 10 yr old. We feel that being mated to Private Stock the calves will have plenty of look and give them some added punch from Private Stock. 9015 progeny have always and still continue to produce at the highest level.



HILB ELECTRIC SPARK G195B - LOT 62 DONOR

SIRE OF LOT 62A

SIRE OF LOT 62B

62 HILB ELECTRIC SPARK G195B

TD CATTLE/ CYPRESS CREEK FARMS

BD: 3/17/19 / ASA#: 3615383 / Tattoo: G195B / PB SM
Embryos / Homozygous Polled / Red

W/C LOADED UP 1119Y
W/C BANKROLL 811D
MISS WERNING KP 8543U



W/C EXECUTIVE ORDER 8543B
HILB ELECTRIC LOVE D816
SS BABYS BREATH P035

Lot 62A: 3 Embryos by KOUPALS B&B DIVERSE 3181 (ASA# 4548753), 1/2 SM 1/2 AN Calf

CE	BW	WW	YW	MCE	Milk	MWW	Stay	Marb	BF	REA	API	TI
14.0	0.1	86.2	131.4	6.4	28.8	71.7	11.5	0.44	-0.020	1.19	135.7	87.9

Lot 62B: 6 Embryos by RED MRLA RESOURCE 137E (ASA# 4023776), 1/2 SM 3/8 AN 1/8 AR Calf

CE	BW	WW	YW	MCE	Milk	MWW	Stay	Marb	BF	REA	API	TI
8.9	1.7	71.7	108.5	6.0	21.4	57.2	13.6	0.16	-0.030	0.52	108.6	68.3

Lot 62A: Selling 3 IVF, Unsorted, Conventional Semen embryos. Guaranteeing 1 pregnancy if implanted by a certified embryologist. Stored at Trans Ova, Georgia.
Lot 62B: Selling 6 IVF, Unsorted, Conventional Semen embryos. Guaranteeing 2 pregnancies if implanted by a certified embryologist. Stored at Trans Ova, Georgia. Selling in packages of 3 guaranteeing one Pregnancy. A really impressive Red Purebred coming from the Hillbrands Program Mated 2 different ways guaranteed to work in whatever direction you choose. Just off phenotype Diverses picture speaks for itself but his numbers are where he really shines and coming in a slick haired package. Halfblood Simmental / Halfblood Red Angus have been growing in popularity over the last few years and when we decided to make some there was no better bull to mate this cow to than RED MRLA RESOURCE in our opinion one of the most consistent red angus bulls to ever walk.

ONE PENNY RANCH

63 ONE PENNY MISS MARIE 43M

BD: 9/30/24 / ASA#: 4416597 / Tattoo: F43M / 3/4 SM 1/4 AN
Embryos / Heterozygous Polled / Red

IR IMPERIAL D948

HOOK'S HERCULES 209H

CLRS ELATED 729E

ABR SIR ARNOLDS IMAGE

X ONE PENNY FANCY IMAGE F43 RC

VINTAGE BLACKCAP 4340

Embryos by GCC NIGHT OWL 3104L (ASA# 4284092), PB SM Calf

CE	BW	WW	YW	MCE	Milk	MWW	Stay	Marb	BF	REA	API	TI
12.4	0.3	87.8	133.8	7.4	21.2	65.1	17.6	0.60	-0.050	0.74	163.4	95.1

Selling 4 IVF, Sexed Female Semen embryos. Guaranteeing 1 pregnancy if implanted by a certified embryologist. Stored at Trans Ova, Sioux Center, Iowa. Just imagine leading a red blaze-faced Night Owl heifer into the showing! One Penny Miss Marie 43M (pictured on pasture 3/8/2026) might be the most unique pedigree red donor flushed this spring. She is 3/4 Simmental, sired by Hook's Hercules 209H, a herdsire for 7P Ranch in Texas. The maternal side of her pedigree includes the Fleckvieh legend, ABR Sir Arnolds Image, and VAR Discovery 2240 from the famed Vintage Angus Ranch in California. Miss Marie 43M is gentle as a kitten, and loaded with growth and maternal power. Mating her with the 2025 Denver Grand Champion, GCC Night Owl, will inject style and look without sacrificing her genetic power. Embryos are unsorted IVF produced using sexed female semen.



ONE PENNY RANCH

64 ONE PENNY KINDNESS K7

BD: 3/9/22 / ASA#: 4118097 / Tattoo: K7 / PB SM
Embryos / Homozygous Polled / Homozygous Black

BRIDLE BIT ECLIPSE E744

HOOK'S GALILEO 210G

HOOK'S EVITA 18E

X

HOOK'S BOZEMAN 8B

HOOK'S ELAINA 210E

HOOK'S CAMEO 31C

Lot 64A: Embryos by TRIF KIRK 224K (ASA# 4115583), PB SM Calf

CE	BW	WW	YW	MCE	Milk	MWW	Stay	Marb	BF	REA	API	TI
16.9	-2.7	83.2	126.2	9.9	26.8	68.3	20.3	1.07	-0.050	0.66	203.8	108.7

Lot 64B: Embryos by KBHR HOMESTEAD H016 (ASA# 3789403), PB SM Calf

CE	BW	WW	YW	MCE	Milk	MWW	Stay	Marb	BF	REA	API	TI
17.6	-2.5	84.7	125.1	11.0	24.1	66.3	21.5	0.81	-0.050	0.98	196.1	104.2

Selling 2 Conventional Embryos, Conventional Semen embryos. Guaranteeing 1 pregnancy if implanted by a certified embryologist. Stored at Nichols Cryo-Genetics, Iowa. One Penny Kindness K7 (ASA 4118097) is a moderate framed, beautiful structured, super docile proven donor that just flat works with so many great sires. You have two opportunities here to add her genetics to your herd. First, the mating to TRIF Kirk 224K is unique and rare. A son of Haggard out of the great Debutante donor from Kellers, Kirk is deceased with no semen commercially available. His first daughters are in production and they are fabulous! The mating to KBHR Homestead is a no-brainer. Just look at what Homestead has done at Ruby Cattle Company. And, the early Kindness x Homestead bulls have matured into very impressive herd sires prospects.



SIRE OF LOT 64A

JOSH ERVIN FAMILY FARMS

65 GCF MISS CALIENTE

BD: 1/1/05 / ASA#: 2291327 / Tattoo: R2 / PB SM
Embryos / Polled / Black

GW MR. MATERNAL 057D

SAC MR MT 73G

SPC MISS TAILER 47C

X

STF TOO RED G64

SS ME TOO L06

WHF ABBEY 012G

Lot 65A: Embryos by STF DOMINANCE T171 (ASA# 2387605), PB SM Calf

CE	BW	WW	YW	MCE	Milk	MWW	Stay	Marb	BF	REA	API	TI
9.5	2.9	53.6	77.3	2.5	17.1	43.8	10.9	-0.07	-0.080	0.56	94.1	55.4

Lot 65B: Embryos by STF DOMINANCE T171 (ASA# 2387605), PB SM Calf

CE	BW	WW	YW	MCE	Milk	MWW	Stay	Marb	BF	REA	API	TI
9.5	2.9	53.6	77.3	2.5	17.1	43.8	10.9	-0.07	-0.080	0.56	94.1	55.4

Lot 65C: Embryos by STF DOMINANCE T171 (ASA# 2387605), PB SM Calf

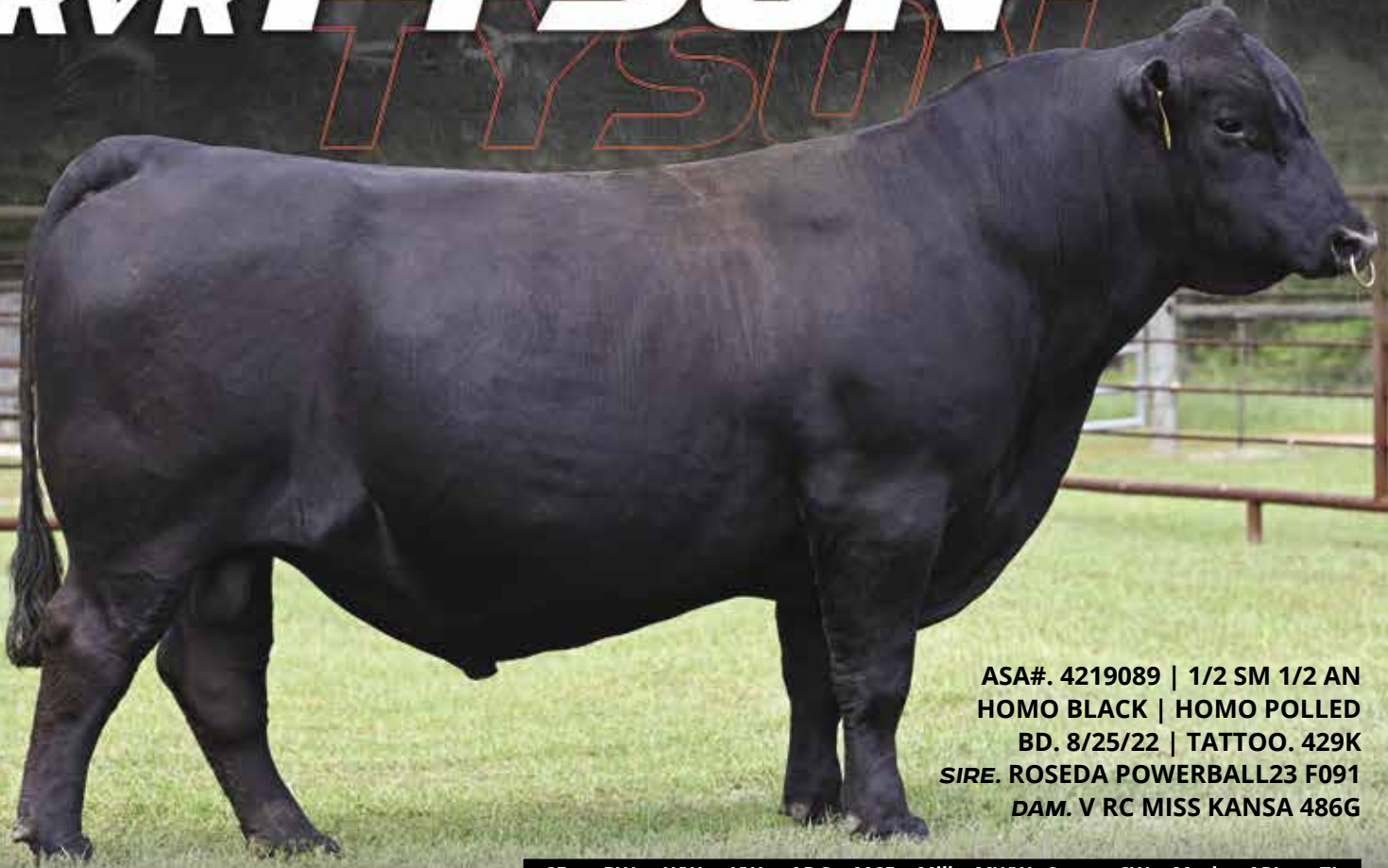
CE	BW	WW	YW	MCE	Milk	MWW	Stay	Marb	BF	REA	API	TI
9.5	2.9	53.6	77.3	2.5	17.1	43.8	10.9	-0.07	-0.080	0.56	94.1	55.4

Selling 3 lots of 3 IVF, Reverse Sorted Female embryos. Guaranteeing 1 pregnancy if implanted by a certified embryologist. Stored at Trans Ova - Maryland, can be sent to Trans Ova - Iowa. Can be released immediately. Caliente was a prolific donor that has etched her name in the history books for the Simmental breed. These embryos are the last of this mating as Caliente died five years ago. Don't miss the final opportunity to raise a full sib to the great STF Onyx 451W who is also deceased.



PACK A PUNCH TO YOUR NEXT CALF CROP

RVR TYSON 429K



ASA#. 4219089 | 1/2 SM 1/2 AN
 HOMO BLACK | HOMO POLLED
 BD. 8/25/22 | TATTOO. 429K
 SIRE. ROSEDA POWERBALL23 F091
 DAM. V RC MISS KANSA 486G

CE	BW	WW	YW	ADG	MCE	Milk	MWW	Stay	CW	Marb	API	TI
15.3	-1.7	103.2	168.5	0.41	10.0	22.5	74.3	16.7	68.0	1.08	193.3	116.0
20%	25%	2%	2%	2%	10%	65%	10%	35%	3%	2%	1%	1%

LONESOME PINES FARM & RIVER CREEK FARMS

66

RVR TYSON 429K

Selling 10 units of Conventional semen. Includes free shipping, stored at CGS - Mitchell, SD.

Tyson was the high selling bull for River Creek in 2024 when Jeremie Ruble purchased him for Terry Bowen in Alabama—and it's easy to see why. With a 6+ frame score, he's exactly what today's commercial cattlemen are after: big, long, and built to add pounds. His spread is almost unreal—starting with a negative birth weight and rocketing to top 1% weaning and yearling growth.

Add in mind boggling marbling and the distinction of being one of the highest \$TI Sim Angus bull in the entire database, and you've got a complete outcross that brings something truly unique to the table. TYSON checks every box and then some. His sisters have floated to the top of our program too and we have flushed them heavily. All the work is done with this one. He spends the fall in Prattville, AL and he will continue to breed cows in Manhattan, KS or Corydon, IA. We expect big things from him and both Lonesome Pine Farm & River Creek are using him heavily. Look for his sons to surface to the top at the Southern Superior Sale held each December at Cato Farms in Waverly, AL just a short drive outside of Auburn. We encourage you to come take a look at him and his progeny because both are impressive!

RIVER CREEK FARMS

Joe & Abram Mertz | Abram. 785-456-3986
 Manhattan, Kansas | rivercreekfarms.com

LONESOME PINE FARM

Terry & Marion Bowen | Terry. 334-235-1275
 Crenshaw County, Alabama

RUBLE CATTLE SERVICES Marketing Partner | Jeremie Ruble. 406-581-7940



GINGERICH FAMILY FARM

67 GIBBS HIGHWAYMAN 3130L

BD: 9/3/23 / ASA#: 4284752 / Tattoo: 3130L / 5/8 SM 3/8 AN
Semen / Homozygous Polled / Homozygous Black

G A R HOME TOWN
KBHR HOMELANDER J071
KBHR MEDORA G132



REDHILL 672X X004 231A
GIBBS 0105H MABELLE 6123D
GIBBS 6123D MABELLE8365U

CE	BW	WW	YW	MCE	Milk	MWW	Stay	Marb	BF	REA	API	TI
11.7	-1.4	105.2	165.5	7.7	27.0	79.5	19.8	1.28	-0.008	1.07	206.1	122.7

Selling 10 units of Conventional semen. Stored at Gingerich Family Farm. Highwayman has been widely used across the last year and rightfully so. He is heifer safe but still adds growth and carcass. His first calves are about to be weaned both at Gingerich Family Farm and Gibbs Farms and they are major standouts at both farms.



LOT 67

GINGERICH FAMILY FARM

68 GIBBS JUGGERNAUT 4399M

BD: 9/12/24 / ASA#: 4438508 / Tattoo: 4399M / 5/8 SM 3/8 AN
Semen / Homozygous Polled / Homozygous Black

EGL FIRESTEEL 103F
SCHOOLEY HAGGARD A411H
SCHOOLEY MISS 3000A 823F



CLRS HOMELAND 327H
GIBBS 2063K EMPRISS 0784H
GIBBS 0784H EMPRISS 7240E

CE	BW	WW	YW	MCE	Milk	MWW	Stay	Marb	BF	REA	API	TI
10.1	-0.7	90.6	148.8	6.5	25.8	71.0	15.7	1.13	-0.047	0.79	182.0	109.5

Selling 10 units of Conventional semen. Stored at Gingerich Family Farm. Gibbs Juggernaut was the \$65,000 dollar high selling percentage bull from the Gibbs 2025 sale. Juggernaut will add power, bone, and muscle. His dam is a incredible young donor at Gibbs Farm.



LOT 68

GIBBS FARMS

69 GIBBS BLAZER 3L02

BD: 8/28/23 / ASA#: 4284862 / Tattoo: 3L02 / 1/2 SM 1/2 AN
Semen / Homozygous Polled / Homozygous Black

G A R HOME TOWN
KBHR HOMELANDER J071
KBHR MEDORA G132



BALDRIDGE COLONEL C251
BGIBBS 8153F DAISY 6223D
BGIBBS 6223D DAISY 2202

CE	BW	WW	YW	MCE	Milk	MWW	Stay	Marb	BF	REA	API	TI
7.9	1.0	99.0	161.4	5.6	28.7	78.0	19.5	1.09	-0.029	1.15	185.5	111.9

Selling 10 units of Conventional semen. Stored at Gibbs Farms (Ranburne, AL). Blazer was the \$55,000 high-selling bull from the 2024 Fall Sale here. Blazer is the outcross baldy bull that exhibits as much muscle, power, and explosive growth, all in an eye-appealing package. A very balanced EPD profile, superior disposition, and excellent carcass traits. His first calves are on the ground now, and they come with extra style, presence, and bone. Blazer was Allied's number 1 semen seller last year.



LOT 69

GIBBS FARMS

70 GIBBS MILESTONE 4312M

BD: 9/8/24 / ASA#: 4438441 / Tattoo: 4312M / PB SM
Semen / Homozygous Polled / Homozygous Black

LBRS GENESIS G69
GIBBS CULMINATION
GIBBS 9047G LOUISE Y534



GIBBS 9114G ESSENTIAL
BGIBBS 2392K HANOI CLRS0110H
CLRS HANOI 0110H

CE	BW	WW	YW	MCE	Milk	MWW	Stay	Marb	BF	REA	API	TI
12.8	-1.0	96.0	157.1	7.3	27.4	75.3	21.6	0.83	-0.002	1.10	196.1	110.8

Selling 10 units of Conventional semen. Stored at Gibbs Farms (Ranburne, AL). Milestone was the lot 4 bull in our 2025 fall sale. Unfortunately, we pulled him from the sale due to a shoulder injury. We felt the bull would recover, but could not offer him for sale that day due to a slight limp. Since then, he has recovered fully and has successfully bred cows. He is the purebred Culmination son that has the look and data to back him up. He is admired for his striking presence and neck extension, long spine, and square hip. We have received more calls about this bull than any other bull. We feel as if this is the purebred bull needed throughout the industry to offer a little different pedigree with respectable figures and an eye-popping look.



LOT 70

GIBBS FARMS



LOT 71

71 TJ STONE COLD 336G

BD: 2/16/19 / ASA#: 3611790 / Tattoo: 336G / 5/8 SM 3/8 AN
Semen / Homozygous Polled / Homozygous Black

ACW IRONHIDE 395Y
TJ FROSTY 318E
TJ 58B



CCR WIDE RANGE 9005A
TJ 11D
TJ 21Z

CE	BW	WW	YW	MCE	Milk	MWW	Stay	Marb	BF	REA	API	TI
15.4	-2.9	83.8	134.3	9.7	30.3	72.1	20.0	0.50	-0.005	0.60	162.9	92.9

Selling 10 units of Conventional semen. Stored at Gibbs Farm (Ranburne, AL). The proven baldy bull that offers more calving ease, growth, carcass, docility, and indexes than his competition. A bull that is extremely long-sided, big-topped, square-made, and adds depth of body and substance to his progeny. His first daughters are about to wean their first calves, and exhibit beautiful near-perfect udders with small, evenly spaced teats. Stone Cold is leaving his mark as an udder improver. Everyone is always asking if we have any Stone Cold semen. We have very few units, and this will be the last of what we sell.

GIBBS FARMS



LOT 72

72 GIBBS 0689X CRIMSON TIDE

BD: 9/14/10 / ASA#: 2602503 / Tattoo: 0689X / PB SM
Semen / Homozygous Polled / Homozygous Black

ELLINGSON LEGACY M229
MR NLC UPGRADE U8676
MS NLC MOJO S6119 B



BF N315 MARATHON
SSF BLK LUCY S727
SSF BLACK LADY M670

CE	BW	WW	YW	MCE	Milk	MWW	Stay	Marb	BF	REA	API	TI
6.7	3.1	92.5	147.7	4.2	19.3	65.5	11.1	0.17	-0.061	0.98	122.0	85.8

Selling 10 units of Conventional semen. Stored at Gibbs Farms (Ranburne, AL). This will be an interesting throwback semen offer from an exciting bull raised in 2010. Crimson Tide is a Baldy Purebred with power and style. We found 10 units while doing semen inventory, and we feel someone could use it. The females out of Crimson Tide are some of our longest-lasting, and we built our program out of them.

GONSIOR SIMMENTALS



LOT 73

73 CLRS NORTH STAR 2117N

BD: 1/27/25 / ASA#: 4543815 / Tattoo: CLRS2117N / 3/8 SM 5/8 AN
Semen / Homozygous Polled / Homozygous Black

DB ICONIC G95
44 VICTORY
44 LUCY 334G



ES STATEMENT GZ33
CLRS KENDALL 2117K
HOOK'S FORTUNE 36F

CE	BW	WW	YW	MCE	Milk	MWW	Stay	Marb	BF	REA	API	TI
17.8	-3.7	104.0	174.9	8.8	29.2	81.2	15.9	0.93	0.034	0.76	189.2	115.5

Selling 10 units of Conventional semen. Stored at Vogler Semen Center, Ashland NE. Currently the biggest spread SimAngus Bull in the ASA database. A 3/8 blood designed to make the ultimate high performing SimAngus cattle. He was the lead of bull on the Bred For Balance sale who commanded \$36,000. We are very excited about this stud and he will be used heavily in our program.

REED FAMILY FARMS



LOT 74

74 LUCAS MOZART 457M

BD: 9/11/24 / ASA#: 4467103 / Tattoo: 457M / 1/2 SM 1/2 AN
Semen / Homozygous Polled / Homozygous Black

S S ENFORCER E812
WILLIAMS HOLLYWOOD 700-380
POWELL ERICA 7312



CLRS GRADE-A 875 A
WS MISS SUGAR C4
WS ANISE A71

CE	BW	WW	YW	MCE	Milk	MWW	Stay	Marb	BF	REA	API	TI
15.2	0.2	113.9	188.1	7.1	27.0	83.8	15.6	0.69	-0.034	1.02	173.3	113.0

Selling 10 units of Conventional semen. Stored at Reed Family Farms. 6 plus frame 1/2 blood Miss Sugar C4 son. Loaded with 1% growth EPDs and excels in carcass EPDs while maintaining top 20% CE. As clean and stylish as any Simmental influenced bull there is with excellent feet, legs and perfect stride. Photo taken within a week of cleaning up a group of cows.

RIVER CREEK FARMS

75 BAS NEW HEIGHTS M4042

BD: 3/17/24 / ASA#: 4426391 / Tattoo: M4042 / 3/4 SM 1/4 AN
Semen / Homozygous Polled / Homozygous Black

HOOK'S EAGLE 6E
BAS MONEY MAKER J801
BAS MISS BEACON F801



CLRS FREE TRADE 210F
BAS MISS FREE TRADE H042
MILL BRAE CP BARBARA 8066

CE	BW	WW	YW	MCE	Milk	MWW	Stay	Marb	BF	REA	API	TI
18.0	-3.5	101.1	167.7	11.2	32.5	83.0	22.2	0.51	-0.034	1.24	181.8	106.3

Selling 10 units of Conventional semen. Includes free shipping, stored at CGS - Mitchell, SD.
NEW HEIGHTS rose to the top of the 2025 Iowa Beef Connection Sale as a unique blaze-faced heifer bull with an incredible BW-to-WW spread. Purchased in partnership with Gonsior Simmentals, he is big-footed, stout, and wide-based with added power, yet smooth and long-sided. Calves come easy, mostly baldies, and grow rapidly. Backed by a high-demand sire, he offers fresh, hard-to-find genetics for any program.



LOT 75

RIVER CREEK FARMS

76 SCHOOLEY/EOR MAINSTAY M06

BD: 2/19/24 / ASA#: 4425229 / Tattoo: M06 / 1/2 SM 1/2 AN
Semen / Homozygous Polled / Homozygous Black

G A R SURE FIRE 6404
GB FIREBALL 672
GB ANTICIPATION 432



KBHR REVOLUTION H071
KBHR MISS AURORA K130
KBHR DEBUTANTE H113

CE	BW	WW	YW	MCE	Milk	MWW	Stay	Marb	BF	REA	API	TI
13.1	0.3	99.8	160.6	9.6	24.4	74.0	19.0	1.10	-0.034	1.27	192.8	113.6

Selling 10 units of Conventional semen. Includes free shipping, stored at CGS - Mitchell, SD.
MAINSTAY is the result of a mating we believed in—and we made sure not to miss him twice. Purchased through the Schooley sale after an earlier embryo opportunity, he offers power, numbers, and standout phenotype in a blaze-faced package. Used exclusively at River Creek Farms and Gibbs Farms in Spring 2025, he's built to move SimAngus programs forward.



LOT 76

RIVER CREEK FARMS

77 W/C HEADSHOT 957M

BD: 2/6/24 / ASA#: 4442183 / Tattoo: 957M / PB SM
Semen / Homozygous Polled / Homozygous Black

CLRS GUARDIAN 317G
TSN STATESMAN K006
TSN MISS EAGLE H345



MR SR 71 RIGHT NOW E1538
W/C MISS WERNING 978G
W/C MISS WERNING 704E

CE	BW	WW	YW	MCE	Milk	MWW	Stay	Marb	BF	REA	API	TI
16.6	-1.7	104.9	154.3	9.2	20.4	72.7	17.2	0.26	-0.098	1.09	164.6	103.1

Selling 10 units of Conventional semen. Includes free shipping, stored at CGS - Mitchell, SD.
HEADSHOT is a rare bull that makes you rethink what's possible—combining elite phenotype with powerful numbers. Selected by Abram and Jeremie as the ideal combination bull, he was featured in the 2025 Werning Sale and is sired by the high-demand STATESMAN. With added style and performance, he stands out as a leading next-generation option. Limited semen available.



LOT 77

RIVER CREEK FARMS

78 TJ TAKE THAT 614M

BD: 1/5/24 / ASA#: 4366420 / Tattoo: 614M / PB SM
Semen / Homozygous Polled / Homozygous Black

WS PROCLAMATION E202
KBHR BOLD RULER H152
BAR CK MS X38 106Z



CAMP CAMPBELL E737
TJ 60H
TJ 5F

CE	BW	WW	YW	MCE	Milk	MWW	Stay	Marb	BF	REA	API	TI
12.8	0.4	92.0	157.8	7.3	24.4	70.3	20.2	0.70	-0.049	0.53	183.8	103.9

Selling 10 units of Conventional semen. Includes free shipping, stored at CGS - Mitchell, SD.
We're excited to partner with Powerline Genetics on TJ TAKE THAT 614M, a standout high seller from the 2025 TJ Ranch sale. This bold, blaze-faced son of Bold Ruler offers added rib, length, and athleticism with true phenotype improvement. Backed by the 106Z cow family and tied to River Creek greats like HOMELANDER and MONACO, he combines growth and carcass in a high-impact package. Early calves are dark, blaze-faced, and impressive.



LOT 78



LOT 79

79 KBHR REVOLUTION H071

RIVER CREEK FARMS

BD: 3/21/20 / ASA#: 3789458 / Tattoo: H071 / PB SM
Semen / Homozygous Polled / Homozygous Black

HHS MR ENTOURAGE 867B
HHS MR 847D
HHS MISS LUCKY AVA 847A



CLRS GRADE-A 875 A
WS MISS SUGAR C4
WS ANISE A71

CE	BW	WW	YW	MCE	Milk	MWW	Stay	Marb	BF	REA	API	TI
10.3	1.8	106.2	164.9	4.2	22.4	75.4	20.2	0.39	-0.061	1.24	164.7	102.2

Selling 10 units of Conventional semen. Includes free shipping, stored at CGS - Mitchell, SD. REVOLUTION, our \$75,000 high seller from the 2021 Keller Broken Heart Ranch Bull Sale, is owned with Ruble Cattle Services and Schooley Cattle Co. He offers an elite blaze-faced phenotype with proven growth and carcass. Daughters are productive with excellent udders and influencing the next generation. A leading son of the Sugar cow, he sires high-quality SimAngus baldies. Semen is limited.



LOT 80

80 TERS KODIAK 206K

RIVER CREEK FARMS

BD: 1/20/22 / ASA#: 4042365 / Tattoo: TERS 206K / PB SM
Semen / Homozygous Polled / Homozygous Black

GIBBS 7382E BROAD RANGE
GIBBS 9114G ESSENTIAL
GIBBS 7153E STAR 3136A



MCM TOP GRADE 018X
TECS EXTREME 709E
HOOK'S XCELLENCE 87X

CE	BW	WW	YW	MCE	Milk	MWW	Stay	Marb	BF	REA	API	TI
16.2	-2.9	81.7	115.2	6.6	33.5	74.2	21.9	0.37	-0.012	0.69	170.0	92.9

Selling 10 units of Conventional semen. Includes free shipping, stored at CGS - Mitchell, SD. KODIAK was the \$110,000 high seller in the 2023 Bred For Balance Sale, owned in partnership with Schooley Cattle. A striking, well-balanced purebred, he's backed by Top Grade and the influential Hook's Xcellence 87X cow family. His first daughters are already proving his value, topping Schooley's sale and confirming his ability to produce elite females. He is now deceased and his semen supply is dwindling by the day.



LOT 81

81 ADV COMPASS L3574

RIVER CREEK FARMS

BD: 3/11/23 / ASA#: 4212198 / Tattoo: L3574 / PB SM
Semen / Homozygous Polled / Homozygous Black

BRIDLE BIT ECLIPSE E744
HOOK'S GALILEO 210G
HOOK'S EVITA 18E



LBRS GENESIS G69
ADV MS GENESIS J1017
ADV MS WIDE RANGE F8032

CE	BW	WW	YW	MCE	Milk	MWW	Stay	Marb	BF	REA	API	TI
11.1	0.6	109.9	175.8	7.5	30.2	85.1	18.8	0.99	-0.041	0.73	199.4	121.1

Selling 10 units of Conventional semen. Includes free shipping, stored at CGS - Mitchell, SD. ADV COMPASS L3574 was our \$70,000 selection from the 2024 Waggoner Ranch Bull Sale and is one of the most unique purebred Simmental bulls in the breed. A son of Hook's Galileo, he combines growth, carcass, and profitability with calving ease and maternal strength. His first calves at River Creek are born easy with added look and quality. A rare, high-impact option for both purebred and SimAngus programs.



LOT 82

82 RUBYS QUADRANT 210K

RIVER CREEK FARMS

BD: 1/1/22 / ASA#: 4135953 / Tattoo: 210K / PB SM
Semen / Homozygous Polled / Homozygous Black

WS PROCLAMATION E202
LBRS GENESIS G69
LBR DIANA D69



WS ALL-AROUND Z35
RUBYS LINDA 721E
RUBYS LINDA 341A

CE	BW	WW	YW	MCE	Milk	MWW	Stay	Marb	BF	REA	API	TI
9.2	2.2	118.0	174.9	7.1	29.1	88.0	17.9	0.26	-0.051	1.52	154.6	106.0

Selling 10 units of Conventional semen. Includes free shipping, stored at CGS - Mitchell, SD. QUADRANT was our \$80,000 selection from the 2023 Ruby Cattle Co. Bull Sale and is already making an impact across the industry. Semen has been exported to Australia and he's been used on elite show and donor females in top programs nationwide. A son of LBRS Genesis, he combines growth and performance with a bold, powerful phenotype—wide-based, heavy muscled, and sound-footed. A rising sire with real-world proof.

RIVER CREEK FARMS

83 RVR JORDAN23 478L

BD: 9/11/23 / ASA#: 4374857 / Tattoo: 478L / 1/2 SM 1/2 AN
Semen / Homozygous Polled / Homozygous Black

E W A PEYTON 642

ROSEDA POWERBALL23 F091
ROSEDA BLACKCAP B103 D118



WS ALL-AROUND Z35

RC MISS ALL-AROUND 031C
RC MISS TOP GRADE 040A



LOT 83

CE	BW	WW	YW	MCE	Milk	MWW	Stay	Marb	BF	REA	API	TI
13.0	0.4	108.7	172.0	8.5	23.4	77.6	15.1	0.88	0.022	0.82	173.7	111.5

Selling 10 units of Conventional semen. Includes free shipping, stored at CGS - Mitchell, SD.
JORDAN23 was our \$62,000 high seller in 2025, selling to Kearns Cattle, Eichacker Simmentals, and Crossroads Cattle Co., with Ruble Cattle Services helping assemble the partnership. A bull that created instant buzz, he combines presence, performance, and carcass merit in one package. Backed by the proven Roseda Powerball23 line, his brothers have averaged \$19,000 on 20 sons across our last two sales. A true blend of seedstock appeal and commercial value.

RIVER CREEK FARMS

84 KBHR HOMELANDER J071

BD: 3/19/21 / ASA#: 3943783 / Tattoo: J071 / 1/2 SM 1/2 AN
Semen / Homozygous Polled / Homozygous Black

G A R ASHLAND

G A R HOME TOWN
CHAIR ROCK SURE FIRE 6095



KBHR HIGH ROAD E283

KBHR MEDORA G132
BAR CK MS X38 106Z



LOT 84

CE	BW	WW	YW	MCE	Milk	MWW	Stay	Marb	BF	REA	API	TI
12.9	-1.0	107.0	167.6	9.5	27.3	80.7	17.7	1.78	-0.011	1.31	228.6	135.1

Selling 10 units of Conventional semen. Includes free shipping, stored at CGS - Mitchell, SD.
HOMELANDER, a Keller Broken Heart Ranch purchase identified with help from Ruble Cattle Services, has quickly separated himself as a leading sire. His sons have topped major sales, including MONACO, with 25 sons averaging \$21,080 in the 2026 River Creek Farms sale alone. His daughters are equally impressive—broody, balanced, and easy to mate. A true high-impact sire with strong demand and limited semen availability.

RIVER CREEK FARMS

85 BLPF LANDMAN L21

BD: 9/4/23 / ASA#: 4356774 / Tattoo: L21 / 5/8 SM 3/8 AN
Semen / Homozygous Polled / Homozygous Black

G A R HOME TOWN

KBHR HOMELANDER J071
KBHR MEDORA G132



TJ STONE COLD 336G

BLPF MISS AMELIA J27
BLPF MISS DORIS B15



LOT 85

CE	BW	WW	YW	MCE	Milk	MWW	Stay	Marb	BF	REA	API	TI
12.0	-1.4	91.9	144.9	8.6	26.3	72.2	21.8	1.21	-0.007	0.71	201.3	112.6

Selling 10 units of Conventional semen. Includes free shipping, stored at CGS - Mitchell, SD.
LANDMAN, a son of KBHR Homelander J071, blends elite performance with eye-catching appeal. This baldy offers an impressive combination of growth, marbling, and a -1.4 BW EPD—rare to find in one package. A front-pasture kind with added look and adaptability, he handles heat and fescue with ease. Calves are stylish, mostly baldies, and continue to impress.

RIVER CREEK FARMS

86 RVR PROMISELAND 461L

BD: 9/4/23 / ASA#: 4375613 / Tattoo: 461L / 1/2 SM 1/2 AN
Semen / Homozygous Polled / Homozygous Black

G A R HOME TOWN

KBHR HOMELANDER J071
KBHR MEDORA G132



RC XCEED 063D

RC MISS XCEED 449J
RC MISS ASHLAND 449G



LOT 86

CE	BW	WW	YW	MCE	Milk	MWW	Stay	Marb	BF	REA	API	TI
15.5	-2.7	86.4	148.5	9.7	29.3	72.9	20.4	1.71	0.010	0.82	232.6	124.8

Selling 10 units of Conventional semen. Includes free shipping, stored at CGS - Mitchell, SD.
PROMISELAND ranks #2 for Marbling EPD (1.71) among all SimAngus bulls in the IGS database. A well-balanced, deep-bodied bull with added frame, he offers a genetically stacked pedigree built to advance both carcass value and maternal strength. An ideal choice for producing high-value SimAngus and building the next generation of elite purebreds.



RIVER CREEK FARMS

87 TJ NORTH 528L

BD: 2/4/23 / ASA#: 4217486 / Tattoo: 528L / 1/2 SM 1/2 AN
Semen / Homozygous Polled / Homozygous Black

S A V RAINFALL 6846 CCR COWBOY CUT 5048Z
X **TJ 28E**
SQUARE B TRUE NORTH 8052 TJ MS 38W
ELBANNA OF CONANGA 1209

CE	BW	WW	YW	MCE	Milk	MWW	Stay	Marb	BF	REA	API	TI
22.0	-4.9	70.8	105.7	11.1	28.3	61.8	15.9	0.67	0.020	0.24	168.3	90.8

Selling 10 units of Conventional semen. Includes free shipping, stored at CGS - Mitchell, SD. NORTH was our favorite SimAngus bull to sell in 2024. Identified with help from Ruble Cattle Services, he combines standout quality with elite calving ease. Smooth-made with added presence and style, he ranks in the top 1% for calving ease while maintaining growth and marbling. Used heavily on heifers at River Creek and Triangle J Ranch, he sires high-quality, marketable offspring.



RIVER CREEK FARMS

88 SCHOOLEY HAGGARD A411H

BD: 2/26/20 / ASA#: 3752744 / Tattoo: A411H / 1/2 SM 1/2 AN
Semen / Homozygous Polled / Homozygous Black

G A R SURE FIRE G A R PROPHET
EGL FIRESTEEL 103F **X** SCHOOLEY MISS 3000A 823F
TJ 22X CCR MS SINGLETARY 3000A

CE	BW	WW	YW	MCE	Milk	MWW	Stay	Marb	BF	REA	API	TI
16.4	-1.8	84.5	134.9	7.1	26.4	68.5	15.9	1.32	0.007	0.35	198.2	111.3

Selling 10 units of Conventional semen. Includes free shipping, stored at CGS - Mitchell, SD. HAGGARD was our \$32,500 selection from the 2021 Schooley Cattle Company Bull Sale, identified with help from Ruble Cattle Services. He offers a rare combination of phenotype and marbling, ranking #8 for \$TI and top 10 for Marbling among active SimAngus sires. A proven heifer bull with above-average growth, his influence is evident in this year's offering and continues to build through his daughters and dam.

CATO FARM

CATTLE BRED TO WORK, BUILT TO LAST



CATO FARM in Waverly, Alabama, located at 2740 Gold Hill Rd Waverly, AL 36879. We have some of the finest genetics in the Simmental and SimAngus breeds. Call or email with any questions, 678-687-5421 or jpcato10@gmail.com

TJ **CHOSEN ONE** 503M

ASA# 4366332 // HOMOZYGOUS BLACK // HOMOZYGOUS POLLED



HA JUSTICE 30J x TJ 44K (TJ GOLD 274G)

CE	BW	WW	YW	ADG	MCE	Milk	MWW	Stay	MW	Doc	CW	Marb	REA	API	TI
14.3	-0.1	96.3	152.3	0.35	8.5	24.2	72.2	21.0	158.2	15.6	54.3	0.79	1.12	193.3	109.5
15	30	10	5	10	10	45	15	10	15	20	10	2	15	1	1

SEMEN AVAILABLE

THROUGH OWNERS OR ALLIED



FOUR CORNER FARMS

Maurlan Dickerson // 404-805-9468
maurlan.dickerson@outlook.com
Letohatchee, AL

OWNED WITH: TRIANGLE J RANCH // JC SIMMENTALS // ALL BEEF



1117 Co Rd 112
Ranburne, AL 36273
(256) 568-3176

**BUTCHER
SHOP**

danieljacksonmeatprocessing@gmail.com



ALL BULLS MARKETED THROUGH
NEXT STEP CATTLE CO.

Join us for our upcoming sale
November 2026

*Contact us today for more information.
James Dixon 334-456-1209*

EST. 2013



NEXT STEP
— Cattle Co. —

Livingston, AL

Mike Cole: (205) 301-0618 | Michael Alan Cole Jr: (334) 212-1316

BIG MIKE'S

STEAKHOUSE

Thomasville, AL - Orange Beach, AL - Andalusia, AL - Auburn, AL - Moundville, AL - Guntersville, AL - Millbrook, AL - Bay Minette, AL

BLENDING REAL-WORLD CATTLE
with the *best genetics*
in the business!

RVR TYSON 429K



429K • 1/2 SM 1/2 AN • BD. 8/25/22
ASA# 4219089 • Homo Black • Homo Polled
ROSEDA POWERBALL23 F091 x V RC MISS KANSA 486G
OWNED WITH RIVER CREEK FARMS

Semen available!

LONESOME PINE FARM
Terry & Marion Bowen | Terry. 334-235-1275
Crenshaw County, Alabama



M8 • 5/8 SM 3/8 AN

ASA# 4532423 • Homo Black • Homo Polled
RVR ROGUE 530H x BLPF MISS EMPRESS C2



M7 • 5/8 SM 3/8 AN

ASA# 4532419 • Homo Black • Homo Polled
RVR ROGUE 530H x BLPF LUCKY GIRL B13



M17 • PB SM

ASA# 4532435 • Homo Black • Homo Polled
KBHR REVOLUTION H071 x BLPF MISS DORIS B15



M12 • 1/2 SM 1/2 AN

ASA# 4532444 • Homo Black • Homo Polled
BLPF MR MAJOR G4 x BLPF MISS GINGER K27

ALABAMA & MISSISSIPPI
Simmental Sale

SATURDAY, MAY 16, 2026

12:00 PM CDT • CULLMAN, AL
SIMANGUS & SIMMENTAL BULLS & FEMALES

Jeremie Ruble, Ruble Cattle Services / Herd Consultant
406-581-7940 / www.rublecattleservices.com

DVAuction
Broadcasting Real-Time Auctions





WHERE *Phenotype*
MEETS *Performance*

SAVE THE DATE

FALL SALE / NOVEMBER 14, 2026

190 Bulls, 200 Replacement Females

SPRING SALE / MARCH 6, 2027

100 Age Advantage Bulls, 75 Replacement Females

SIRE GROUPS FROM THESE HERD SIRES SELL!



CCR BEDROCK 5171J

ASA# 4028738 // 1/2 SM 1/2 AN

CE	WW	YW	Marb	RE	API	TI
12.8	88.2	140.1	1.06	0.61	179.8	106.3



GIBBS 9114G ESSENTIAL

ASA# 3716905 // PB SM

CE	WW	YW	Marb	RE	API	TI
13.3	102.0	166.3	0.38	1.38	171.1	104.8



GIBBS CULMINATION

ASA# 4120425 // PB SM

CE	WW	YW	Marb	RE	API	TI
11.7	101.0	162.9	0.93	0.97	197.2	115.7



GIBBS HIGHWAYMAN 3130L

ASA# 4284752 // 5/8 SM 3/8 AN

CE	WW	YW	Marb	RE	API	TI
11.7	105.2	165.5	1.28	1.07	206.1	122.7



GIBBS KINGPIN 1140J

ASA# 3997162 // 1/2 SM 1/2 AN

CE	WW	YW	Marb	RE	API	TI
15.3	89.9	155.4	0.78	0.54	174.0	103.4



LCDR RESERVE 210J

ASA# 3960639 // PB SM

CE	WW	YW	Marb	RE	API	TI
8.9	102.8	157.6	0.23	1.37	148.1	95.7



Doug Gibbs | 404-717-2264

Bradley Gibbs | 404-904-2914

Sam Young | 770-710-4588

2118 County Road 23 Ranburne, AL 36273

[facebook.com/gibbsfarmssimangus](https://www.facebook.com/gibbsfarmssimangus)



FOCUSING ON *traits* THAT *enhance*
YOUR PROFITABILITY *since 1961*

www.gibbsfarms.net

RFS NORTHERN EXPOSURE N14

ASA# 4558247 | PB SM | Homozygous Black | Homozygous Polled



**NORTHERN EXPOSURE SEMEN
WILL NOT SELL AGAIN UNTIL
NEXT FALL IN SPECIAL SALES
TO BE ANNOUNCED.**



RFS Miss N6 - High Selling, \$110,000 Full Sister



BRIDLE BIT Prelude L372 - \$200,000 Dam

RFS Northern Exposure N14 is the best purebred Simmental to sell this spring. With the base changes at IGS and the American Simmental Association it's harder than ever to find purebred bulls with this high of calving ease top 10%, light birthweight top 5% and above average growth. He does this while posting top 5% MCE, top 4% STAY, top 25% DOC, top 1% Marb & API and top 2% TI. His sire RFS CREDENTIALS L49 is one of the best GIBBS 9114G ESSENTIAL sons and is out of KBHR MEDORA G132 the dam to KBHR HOMELANDER J071. We haven't even mentioned the best part of his pedigree! His dam BRIDLE BIT PRELUDE L372 sold as an open heifer for \$200,000. We were contending bidders who were in at \$195,000. Talk about

your all-time misses! This is the first bull offered at public auction out of this great dam. What makes Northern Exposure truly unique is he encompasses all this with a wonderful phenotype. He has big nice shaped hooves, a really sound structure and tons of rib. He is thick from end to end with a big top not found in most heifer bulls. This is the guy who will work on power females to suck out birthweight, add much needed calving ease and supply breed leading marbling. Northern Exposure semen will not sell again until next fall in special sales to be announced. You can join the great programs River Creek Farms, Keller Broken Heart Farms and Rydeen Farms by joining the waiting list on River Creek Farms website.

LONESOME PINE FARM

TERRY & MARION BOWEN | TERRY. 334-235-1275
CRENSHAW COUNTY, AL

RIVER CREEK FARMS

JOE & ABRAM MERTZ | ABRAM. 785-456-3986
MANHATTAN, KS | RIVERCREEKFARMS.COM

RYDEEN FARMS

PAUL. 218-280-1969 | JUSTIS. 218-280-2032
CLEARBROOK, MN | RYDEENFARMS.COM

Local decision making.
Personal attention. Unexpected hospitality.
It's all part of the River Bank & Trust *difference*.

We invite you to experience it for yourself.



RIVERBANKANDTRUST.COM | 334.290.1012

To see more follow us on    and 

NOTES



RUBLE CATTLE SERVICES
1525 140th Street
Corydon, IA 50060



LOT 1



JC MS MAYHAYLEY 109J - LOT 53 DONOR



SCHOOLEY MISS 3000A 823F - LOT 57 DONOR



KBHR MONACO M021 - SIRE OF EMBRYOS



TJ CHOSEN ONE - SERVICE SIRE

ALABAMA & MISSISSIPPI *Simmental Sale*

SIMMENTAL • SIMANGUS • ANGUS
BRED FEMALES, COW-CALF PAIRS, OPEN HEIFERS,
BULLS & FROZEN GENETICS

SATURDAY, MAY 16, 2026
12:00 PM CDT • Cullman Stockyard • Cullman, AL